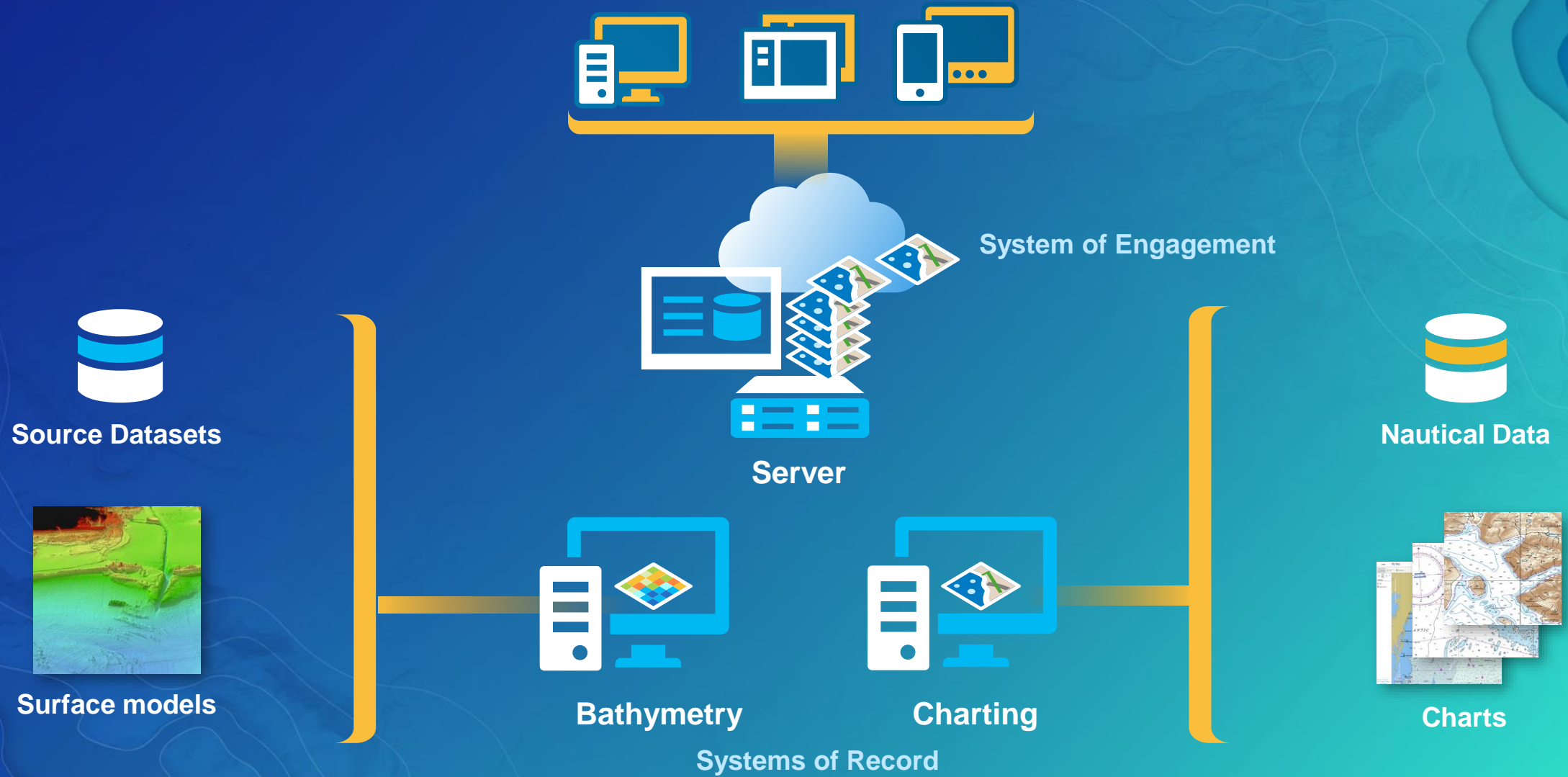


ArcGIS for Maritime: Making Maritime Data Accessible Through ArcGIS Enterprise

Tom De Puyt

Craig T. Greene

ArcGIS for Maritime



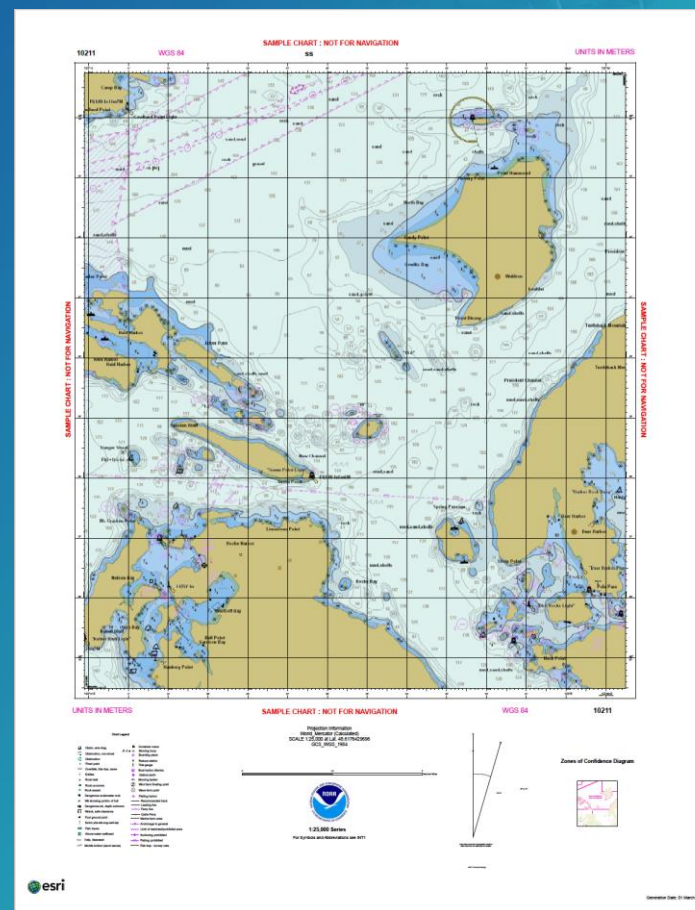
ArcGIS for Maritime: Server

10.5.1

Maritime Chart Service (MCS)



Products on Demand (POD)



Maritime Chart Service

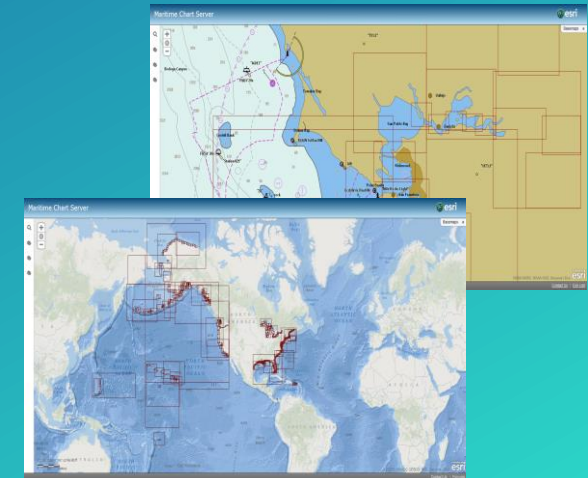
10.5.1 ArcGIS for Maritime: Server

ArcGIS for Maritime: Server

Overview

- Timely and accurate dissemination of S-57/S-63 datasets
 - Additional Military Layers (AML)
 - Electronic Navigational Charts (ENCs)
 - Inland ENC (IENC)
- Rich, authoritative information
- Availability of data through web map services

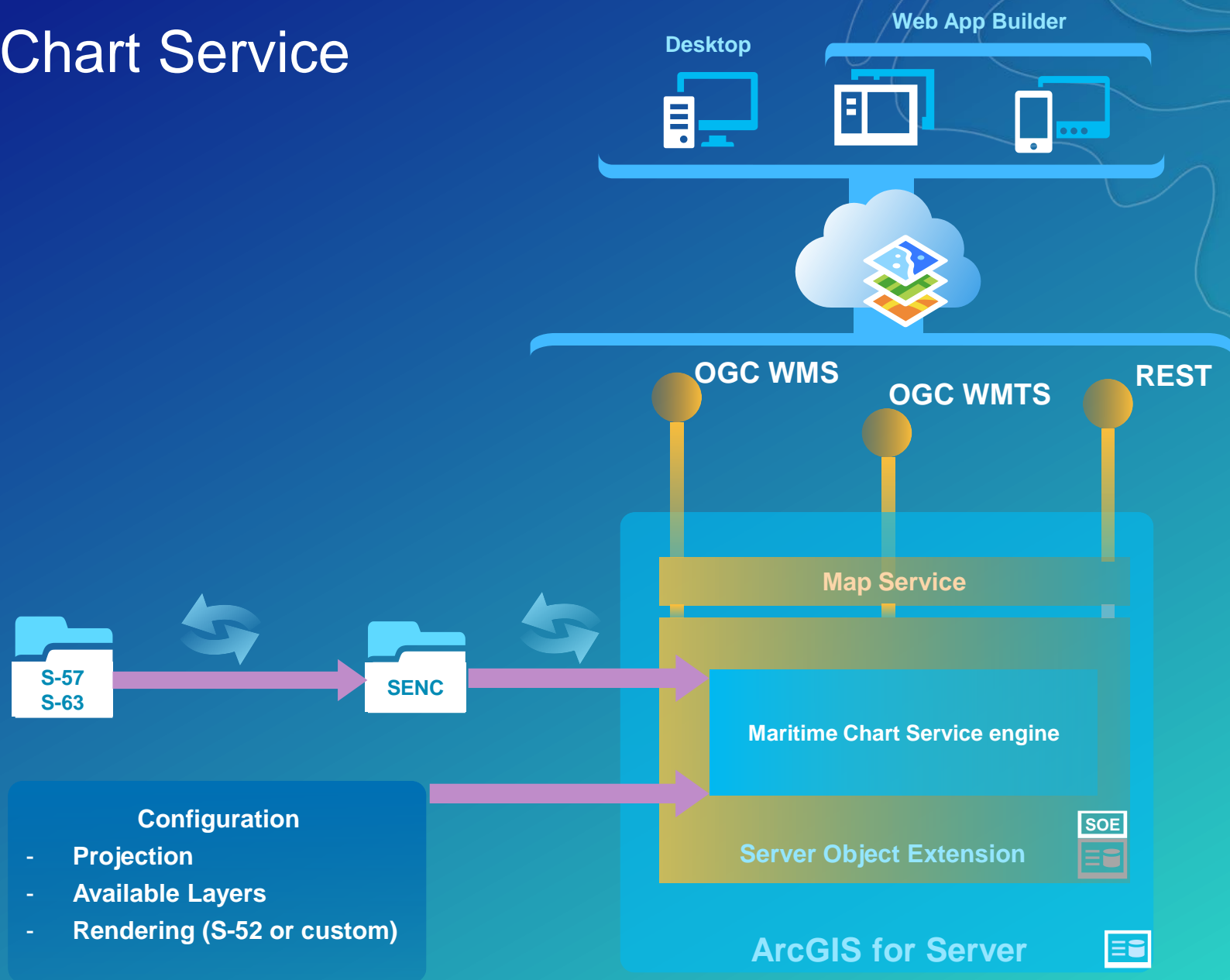
- ArcGIS Server Object Extension
- S-52 Display
- Search
- Identify
- S-63 Decryption
- Up to Date Information



*Providing new services. . .
. . . Increased quality*

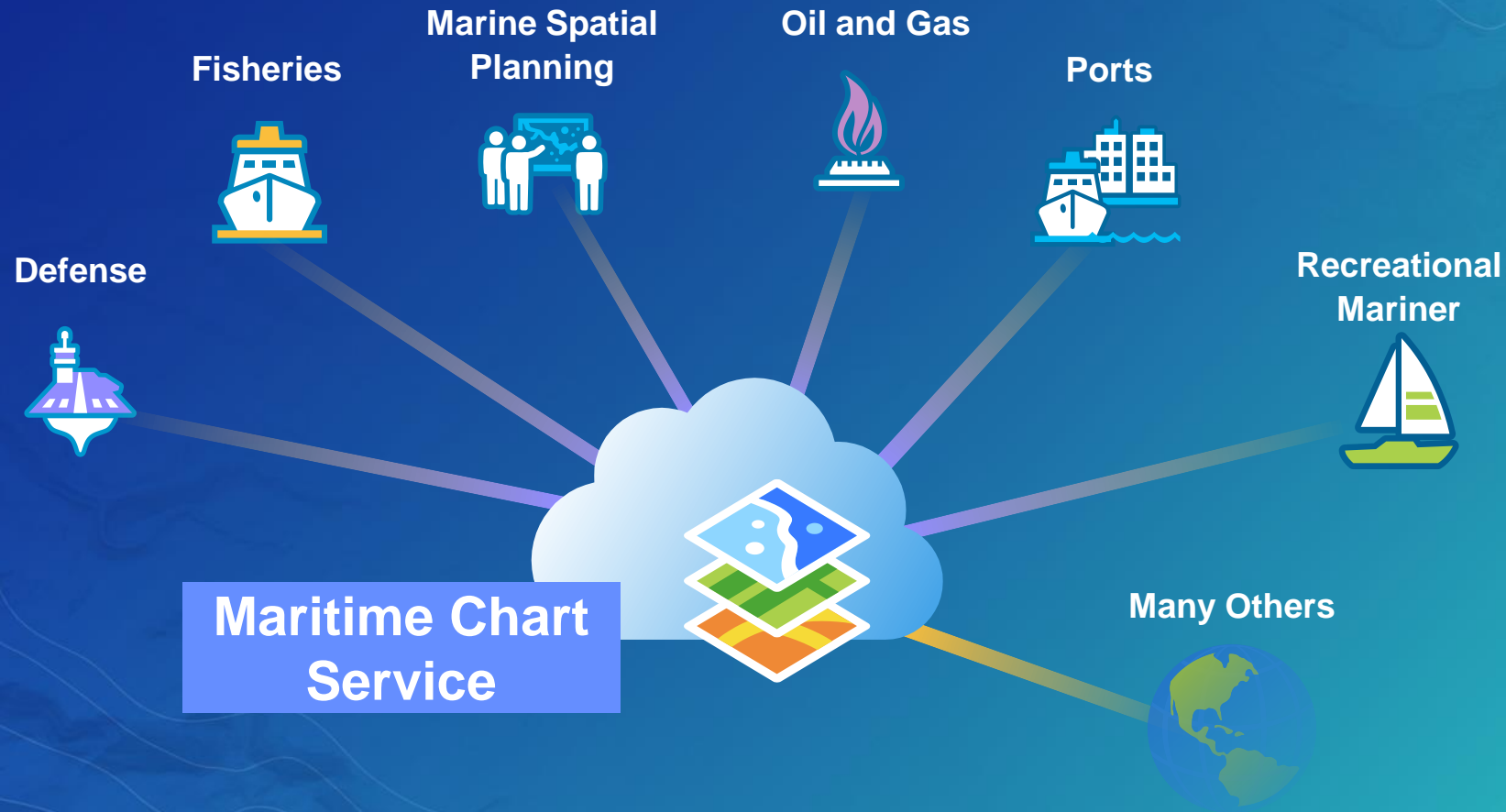
Maritime Chart Service

Architecture



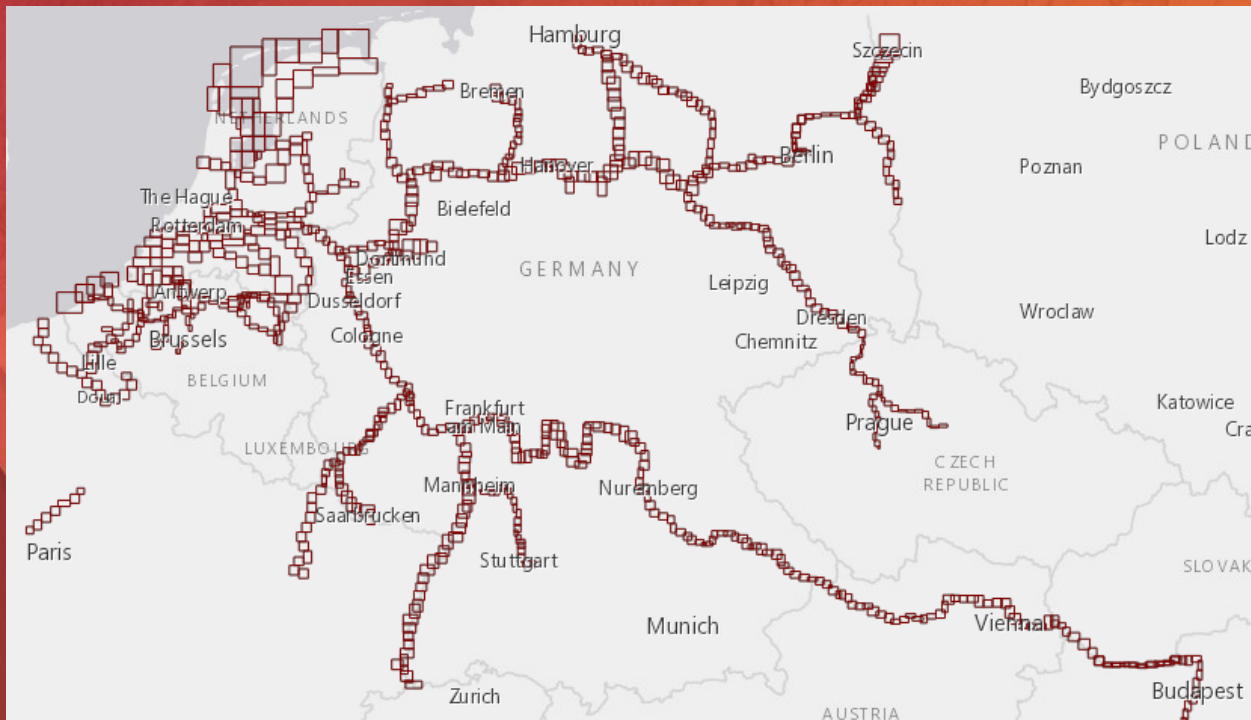
Maritime Chart Service

Industries



Highlights

- Anti-Piracy
- Amphibious Warfare
- Situational Awareness
- Homeland Security
- Border Patrol
- Natural Resources
- National Spatial Data Infrastructure
- Windfarms & other resources
- Harbormasters
- Asset Management
- Common Operational Picture
- Port Security
- Voyage Planning
- Operational Basemap
- Vessel Traffic Management
- Basemap



Demo

<http://esriho.maps.arcgis.com/home/index.html>

Next...

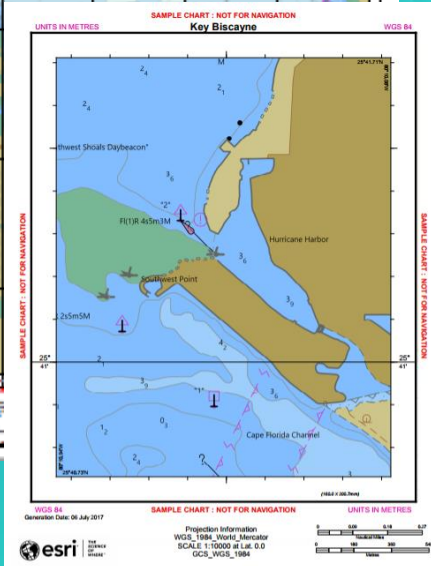
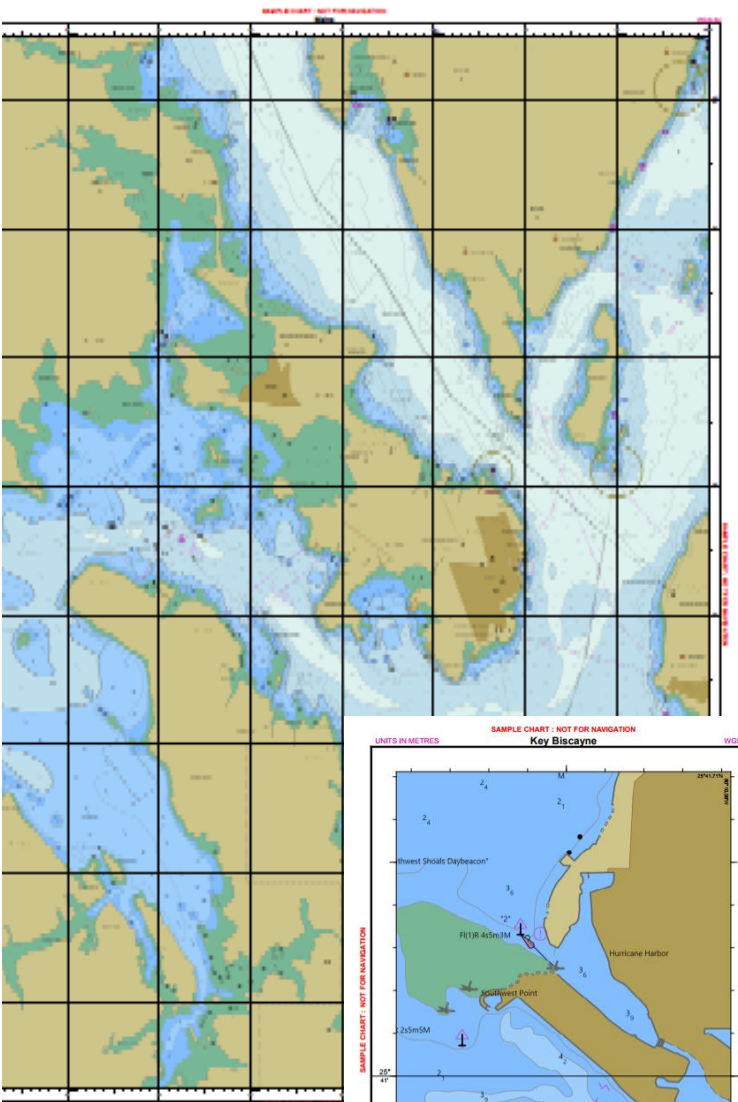
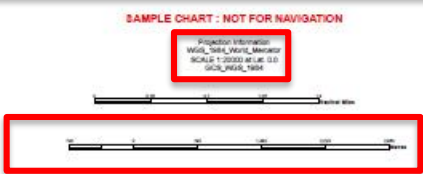
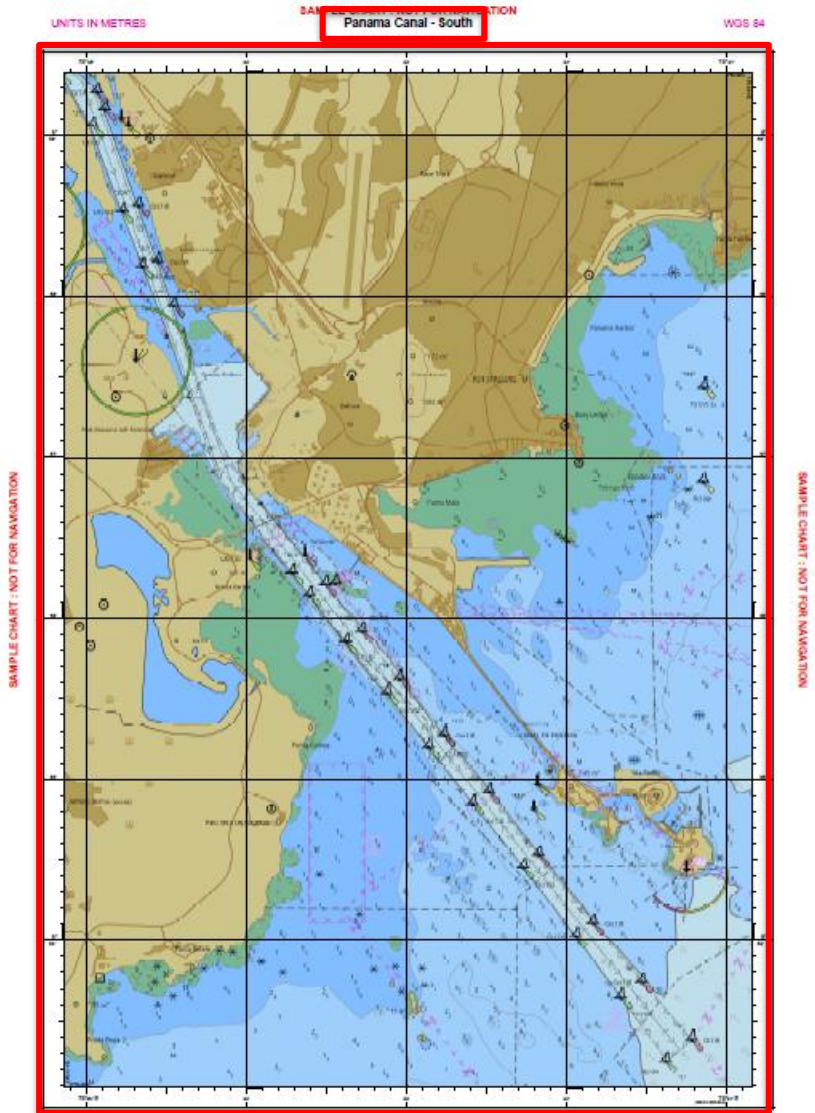
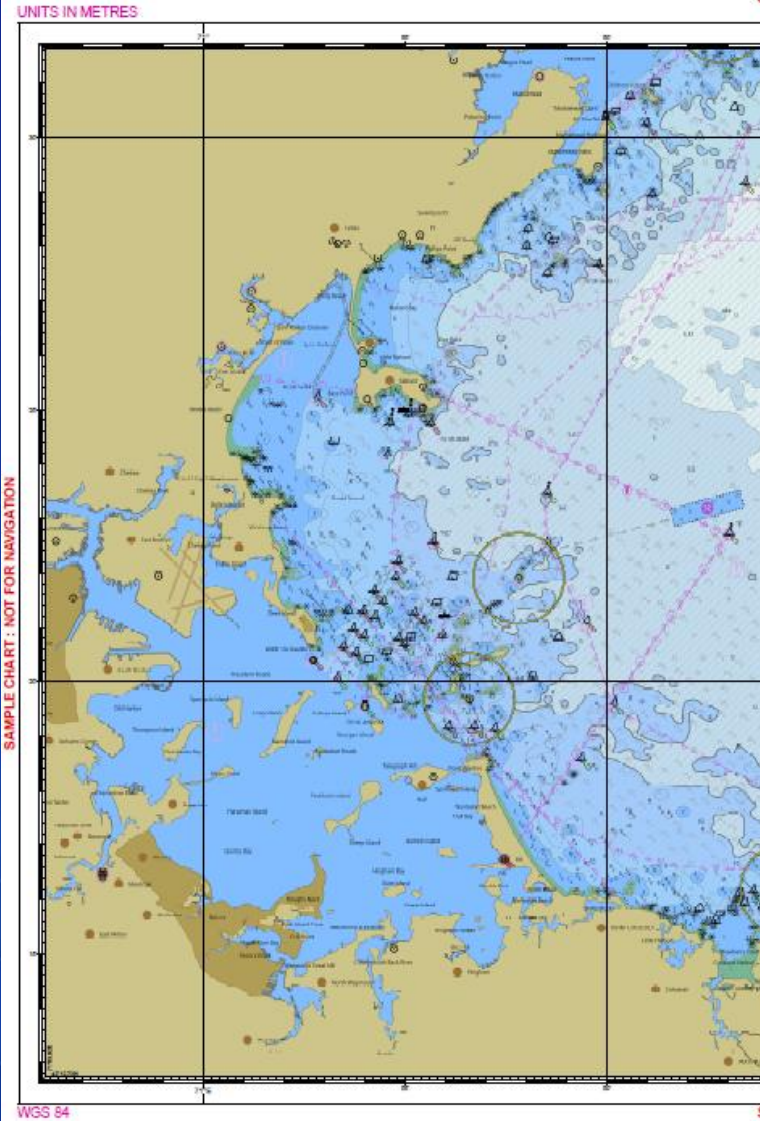
- Vector PDF
- Chart Management
- S-100

Products on Demand

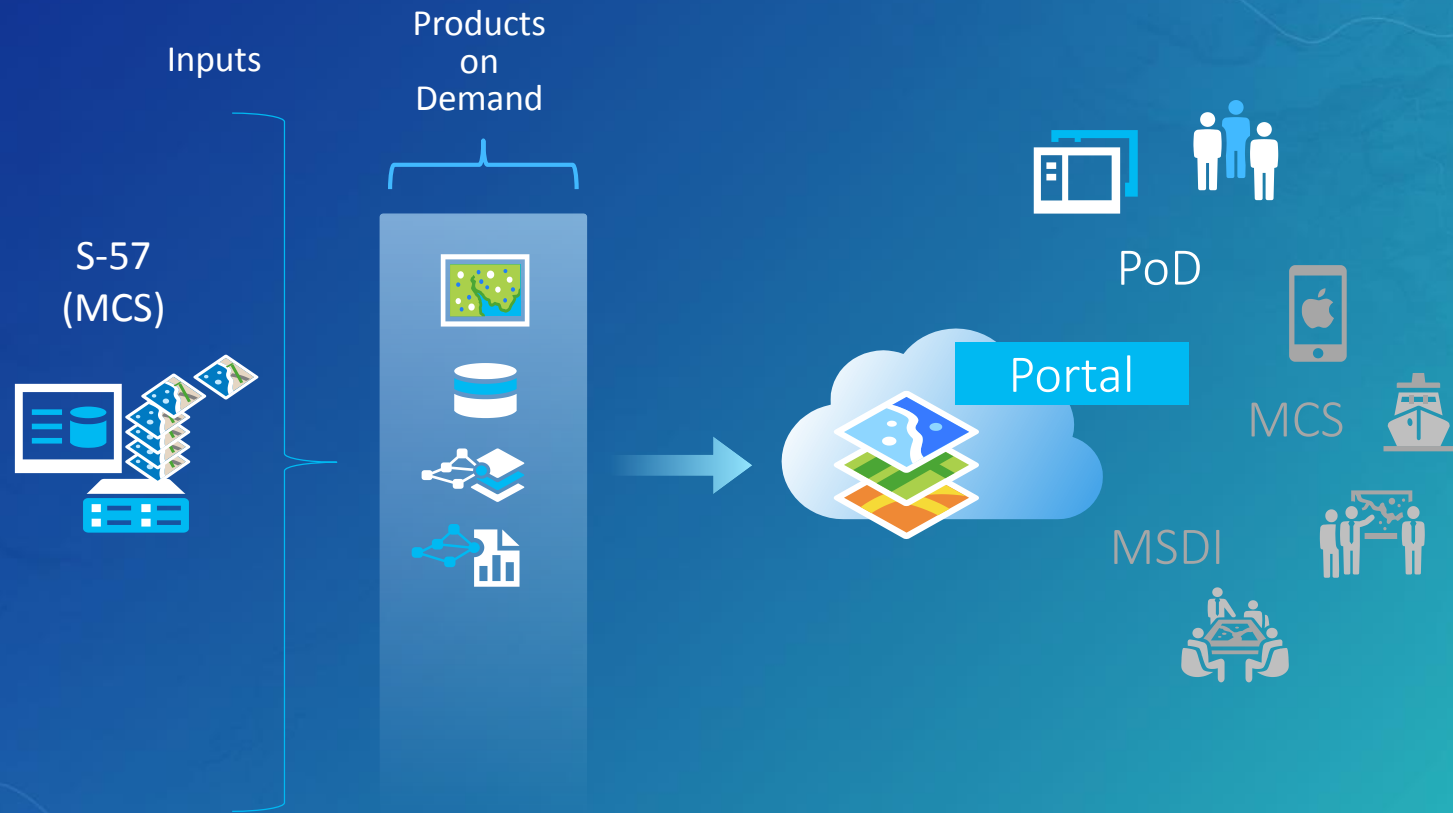
10.5.1 ArcGIS for Maritime: Server

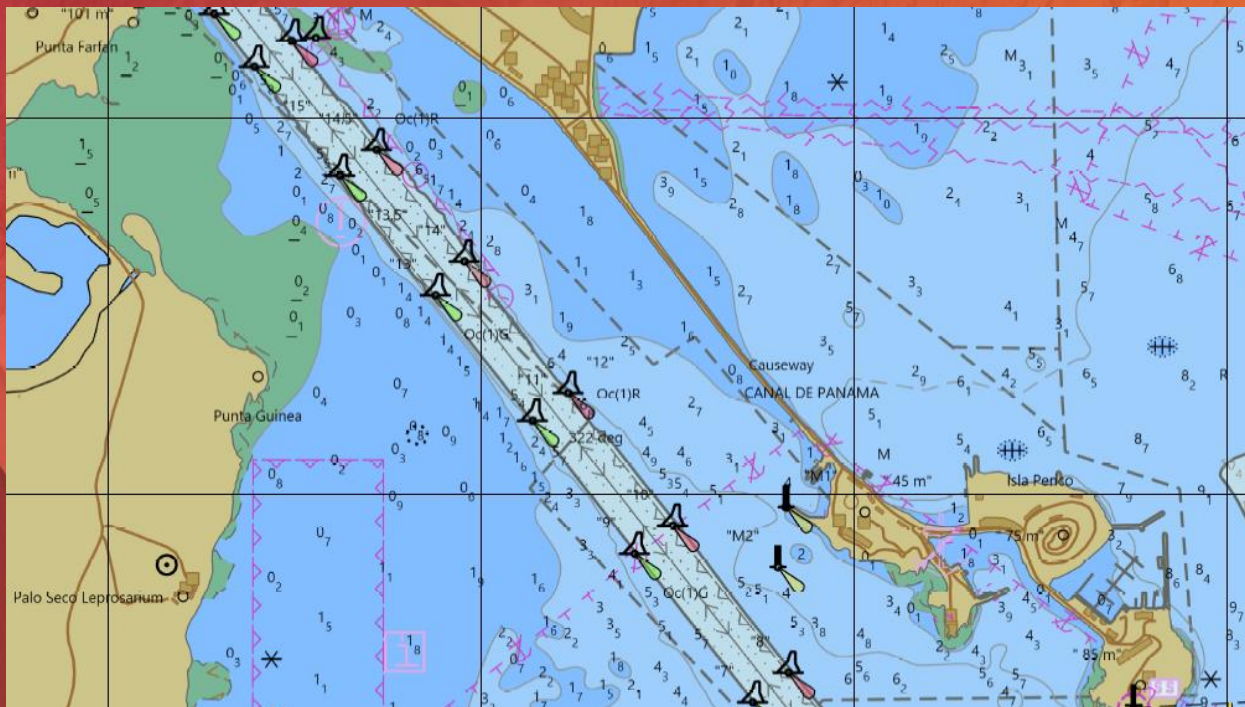
Products on Demand

Overview



Products on Demand Architecture





Demo

<http://esriho.maps.arcgis.com/home/index.html>

Notes

34°

COPYRIGHT

No copyright is claimed by the United States Government under Title 17 U.S.C. However, other nations may claim intellectual property rights on the compilation of data depicting the foreign waters shown on this chart.

AUTHORITIES

Hydrography and topography by the National Ocean Service, Coast Survey, with additional data from the U. S. Coast Guard, Geological Survey, and National Geospatial-Intelligence Agency.

RADAR REFLECTORS

Radar reflectors have been placed on many floating aids to navigation. Individual radar reflector identification on these aids has been omitted from this chart.

For Symbols and Abbreviations see Chart No. 1

HORIZONTAL DATUM

The horizontal reference datum of this chart is North American Datum of 1983 (NAD 83), which for charting purposes is considered equivalent to the World Geodetic System of 1984 (WGS 84). Geographic positions referred to the North American Datum of 1927 do not require conversion to NAD 83 for plotting on this chart.

POLLUTION REPORTS

Report all spills of oil and hazardous substances to the National Response Center via 1-800-424-8802 (toll free), or to the nearest U.S. Coast Guard facility if telephone communication is impossible (33 CFR 153).

S-52 Display parameters

Maritime Display Properties

Depth Contour (Meters)

Miscellaneous

Shallow:

2

Safety:

12

Deep:

30

Apply

A nautical chart of San Francisco Bay, California, showing depth contours, navigational aids, and land features. The chart includes labels for Treasure Island, Yerba Buena Island, and various streets like Avenue B and California Ave. A yellow circle highlights a specific area on the chart. The S-52 display parameters overlay is visible, showing settings for Depth Contour (Meters) and Miscellaneous.

Additional Information

Maritime resources

- Maritime on Geonet: <https://geonet.esri.com/groups/arccgis-for-maritime>
- Demonstrations: <http://esriho.maps.arcgis.com/home/index.html>
- Sample WAB Widgets: <https://github.com/Esri/maritimechartservice-sample-viewer>
- ArcGIS Runtime
 - S-57 Hydrographic Layer: Existing support for S-57 ENC
 - ArcGIS Runtime SDK 100.2: Future support for S-57/S-63 (ENC, *AML*, *iENC*)

Maritime Demonstrations

- Enterprise Area
 - ArcGIS for Maritime: Server
- Mapping and Visualization
 - ArcGIS for Maritime – all products
- Mapping and Statistics
 - ArcGIS for Maritime – all products

Please Take Our Survey on the Esri Events App!

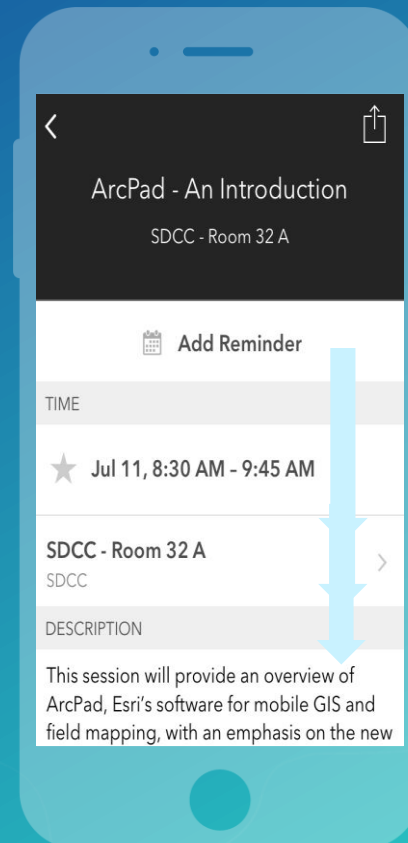
Download the Esri Events app and find your event



Select the session you attended



Scroll down to find the survey



Complete Answers and Select "Submit"





esri

THE
SCIENCE
OF
WHERE