

Configure Web AppBuilder Widgets

Shondra Grenz, Christine Ma

Agenda

- What is Web AppBuilder (WAB) and what are WAB widgets?
- Considerations before building the application
- Demo: Creating a web application with 4 widgets in 15 minutes
- How to troubleshoot WAB widget issues

What is Web AppBuilder?

- Create 2D and 3D web apps without writing a single line of code
- Interactive what-you-see-is-what-you-get (WYS|WYG) user experience
- Ability to configure themes and customize templates
- Build the apps using ready-to-use widgets

What are WAB Widgets?

- Building blocks to build web apps in WAB
- Categorized as two types: off-panel and in-panel
- Mix & Match widgets for customized applications
- Over 50 2D widgets and 15 3D widgets
- Further customization: Web AppBuilder Developer Edition

Choose Widget



Type widget name to search



Add Data



About



Analysis



Basemap G...



Batch Attrib...



Bookmark



Chart



Coordinate ...



Directions



District Loo...



Draw



Edit



Filter



Geo Lookup



Geoproc...



Grid Overlay



Group Filter



Image Mea...



Incident An...



Infographic



Info Summary



Layer List



Legend



Measurement



Near Me



Oblique Vie...



Parcel Drafter



Print



Query



Related Tab...



Report Feat...



Reviewer D...



Screening



Search



Select



Share



Situation A...



Suitability ...



Smart Editor



Stream



Summary



Swipe



Time Slider

Points to consider before creating the web application



Who will be using this web application?
- Internal/ public



What does the app do?
- Task and Workflow



What data/service do you need?
- Widgets data requirements. Data interaction.
- Utility and Premium services.



How will the web app be accessed?
- Browser/ Mobile



What type of experience is this app trying to convey?
- General look and feel

Example: CitiBike application

A simple, easy way to get the most out of Miami.

- 1 **UNLOCK**
FROM ANY STATION
- 2 **RIDE**
WHEREVER YOU WANT
- 3 **RETURN**
TO ANY STATION

[Sign up](#)



Points to consider before creating the CitiBike application



Who will be using this web application?
- CitiBike users



What does the app do?
- Search, Near Me, Query and Direction



What data/service do you need?
- CitiBike stations (Point) and NYC attractions(Point). Biking travel mode.



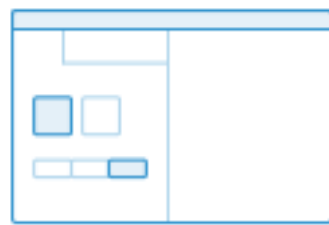
How will the web app be accessed?
- Both browser and mobile devices



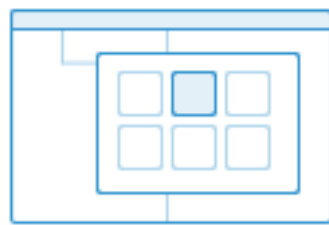
What type of experience is this app trying to convey?
- Simple, clear and easy for anyone to use



1 Create new app



2 Pick style



3 Select map



4 Add widgets



5 Configure attributes



6 Preview and publish

Demo

Build a web application in 15 minutes

Commonly asked questions

- No point feature layer shows up when configuring District Lookup Widget.
- My custom basemap does not show up in Basemap Gallery Widget.
- Publicly shared web app with Direction widget prompted user with login screen.
- One feature layer does not draw in the application.

How to troubleshoot WAB widget issues

- Widgets Help Documentation

<http://doc.arcgis.com/en/web-appbuilder/create-apps/widget-overview.htm>

No point feature layer shows up when configuring District Lookup Widget.

“The structure of the layers requires a relationship between a point feature and a polygon feature and must be a one-to-one geodatabase relationship.”

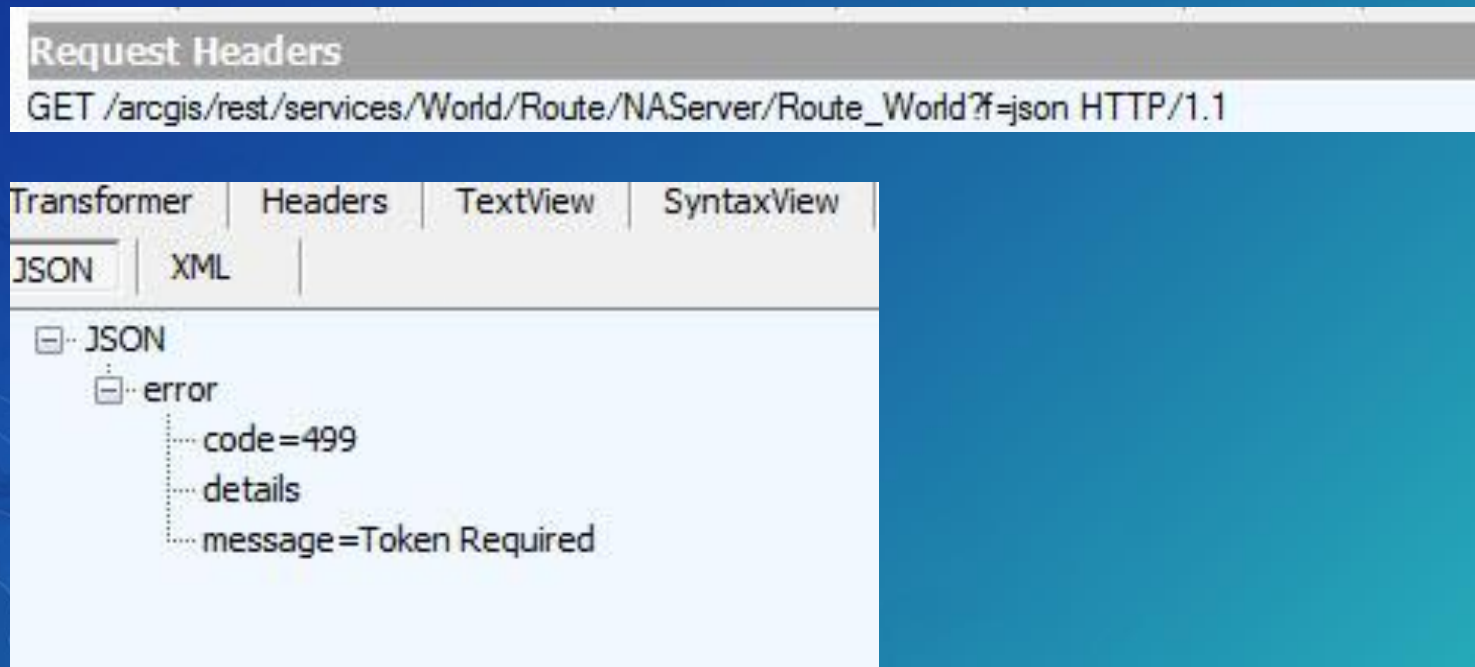
My custom basemap does not show up in Basemap Gallery Widget

“In general, basemaps with tiling schemas that are different than that of the current basemap are excluded from the widget.”

How to troubleshoot WAB widget issues

- Are there any errors in Fiddler or Browser Developer tools?

Publicly shared web app with Direction widget prompted user with login screen- Fiddler.

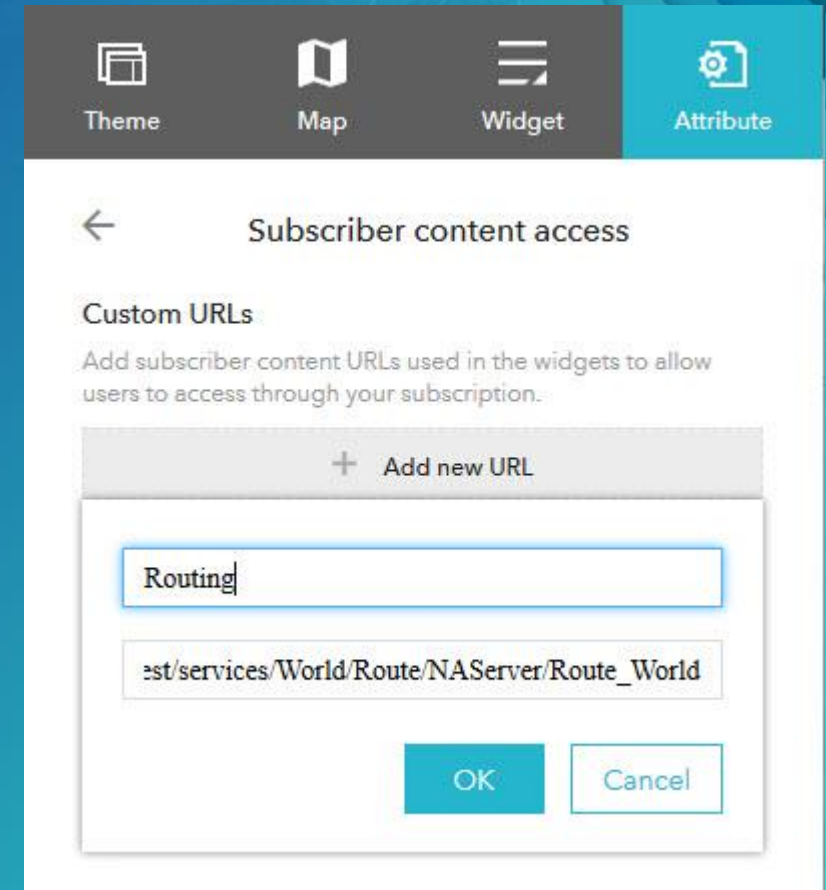


How to troubleshoot WAB widget issues

- Are there any errors in Fiddler or Browser Developer tools?
Publicly shared web app with Direction widget prompted user with login screen- Fiddler.

Cause: The routing service is used to run the Directions widget. This service requires access from members of an organizational account and consumes credits.

Solution: Add the routing service to Subscriber content access in the Attribute tab when configuring Web AppBuilder.



How to troubleshoot WAB widget issues

- Are there any errors in Fiddler or Browser Developer tools?

One feature layer does not draw in the application- Browser Developer tool.

Resources

- WebAppBuilder Help Documentation

<http://doc.arcgis.com/en/web-appbuilder/create-apps/widget-overview.htm>

- Web AppBuilder Gallery

<https://www.arcgis.com/home/gallery.html#c=esri&t=maps&o=modified>

- What's New in Web AppBuilder for ArcGIS (June 2017)

<https://blogs.esri.com/esri/arcgis/2017/06/28/whats-new-in-web-appbuilder-for-arcgis-june-2017-2/>

- WebAppBuilder Developer Edition

<https://developers.arcgis.com/web-appbuilder/>

- Service credits overview

<http://www.esri.com/software/arcgis/arcgisonline/credits>

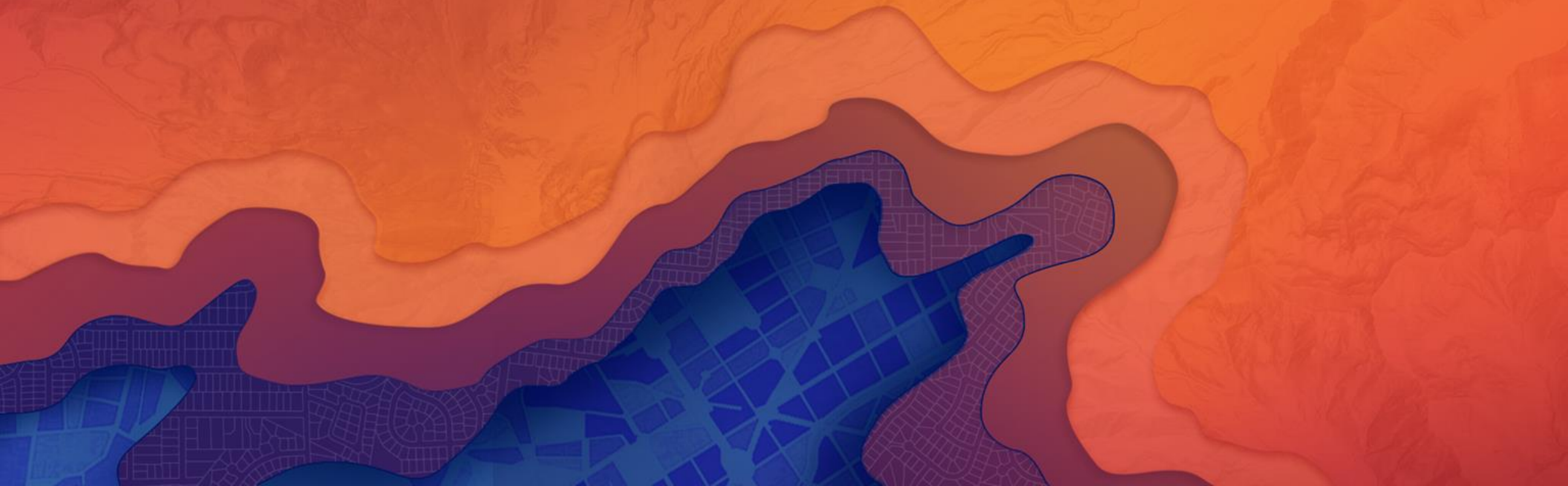
- Fiddler download

<https://www.telerik.com/download/fiddler>

Summary

- Value of WAB and its widgets
- Five questions to consider before building the application
- Six steps to create an application with widgets
- Help documentation is your best friend!

Questions?





esri

THE
SCIENCE
OF
WHERE