

UC



Six Amazingly Useful Things You Can Do with Arcade Expressions

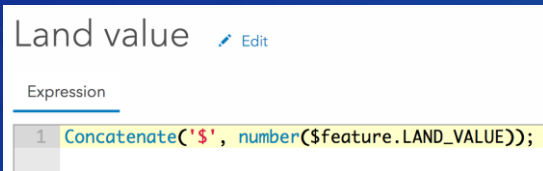
Jim Herries



@jherries

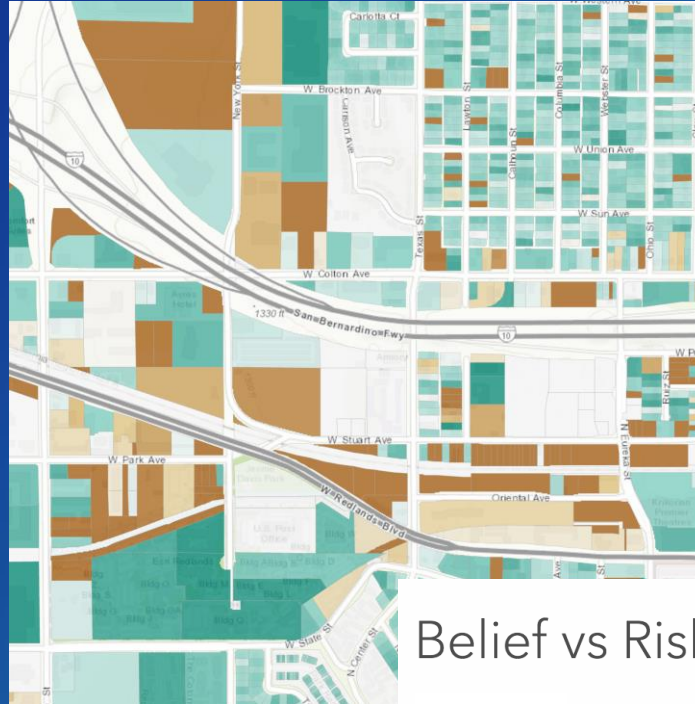
Use Arcade to:

Subhead Here

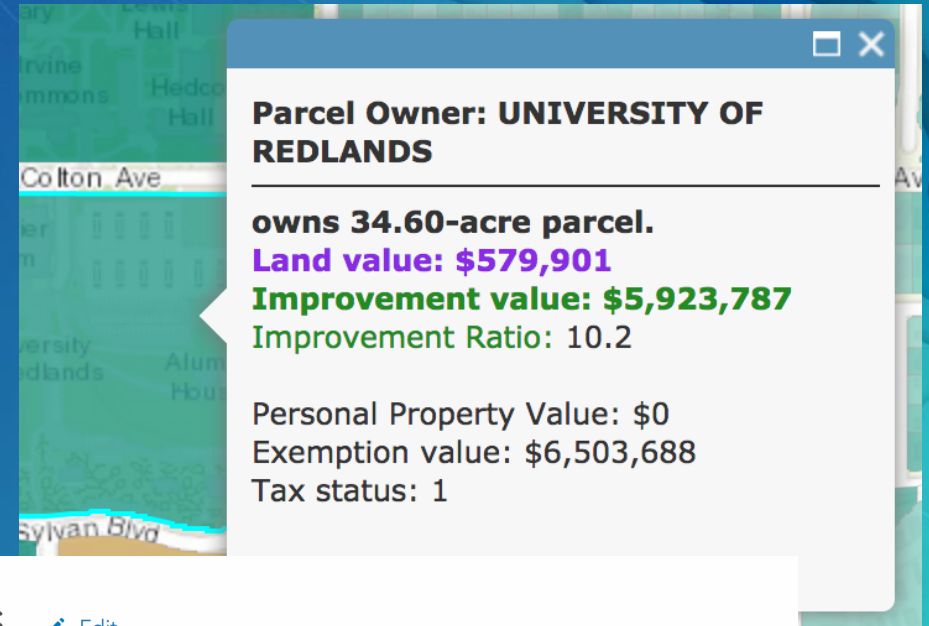


Create labels

Set Symbology



Inject math and logic into popups



Belief vs Risks Edit

Expression

Test

```
12 var personal = 100 - (100 * (40.012 - $feature.personal) / 29.181);
13 var harmUS = 100 - (100 * (57.918 - $feature.harmUS) / 27.683);
14 var devharm = 100 - (100 * (62.892 - $feature.devharm) / 27.718);
15 var futuregen = 100 - (100 * (69.848 - $feature.futuregen) / 23.682);
16 var harmplants = 100 - (100 * (69.344 - $feature.harmplants) / 26.13);
17 var risk = [worried,timing,personal,harmUS,devharm,futuregen,harmplants];
18 var riskIndex = round(average(risk),0);
19
20 //policy support responses
21 var fundren = 100 - (100 * (82.196 - $feature.fundrenewables) / 14.2);
22 var regulate = 100 - (100 * (74.774 - $feature.regulate) / 19.983);
23 var CO2limits = 100 - (100 * (69.376 - $feature.CO2limits) / 31.016);
24 var supportRPS = 100 - (100 * (65.993 - $feature.supportRPS) / 19.37);
25 var policy = [fundren,regulate,CO2limits,supportRPS];
26 var policyIndex = round(average(policy),0);
27
```

Do math, apply logic transform
data...model !

What is Arcade?



Use Arcade expressions to ...

Subhead Here

- Symbolize your data on the map
- Transform your data and symbolize the result on the map
- Confront your data issues on the fly, buying time for your data team to make permanent fixes
- Build models, e.g. site suitability, on the fly
- Iterate quickly – much faster than Add Field → Calculate Field → Fix issues in calculations
- Create labels that say what you want them to say
- Create popups that say what you want them to say
- Add professional-grade map effects that are data-driven

Arcade expressions

Subhead Here

- Do math
- Create data
- Map your calculations on the fly
- Trap for exceptions, odd values, etc – data hygiene on the fly
- Flexible
- Platform-wide
- Make you and your data more productive



Example 1

In ArcGIS Online or Pro

Headline Here

Subhead Here

- Bullet points here

Section Header

SUBHEAD INFORMATION

Headline Here

Subhead Here

- Bullet points here

Headline Here

Text goes here

Headline Here

Text goes here

Headline Here

Text goes here

Please Take Our Survey on the Esri Events App!

Download the Esri Events app and find your event



Select the session you attended



Scroll down to find the survey



Complete Answers and Select "Submit"



Section Header

SUBHEAD INFORMATION



Header for Demo Slide

Supporting Text



esri

THE
SCIENCE
OF
WHERE

Which Font is Best For Your Presentation?

Avenir Next

If you are the sole presenter and **will not distribute your PowerPoint presentation to others outside of Esri** and will only be using your own Esri computer for presenting, please use the new font Avenir Next LT Pro.

See instructions on the following slide to see how to use this new font.



Use Avenir Next if ...

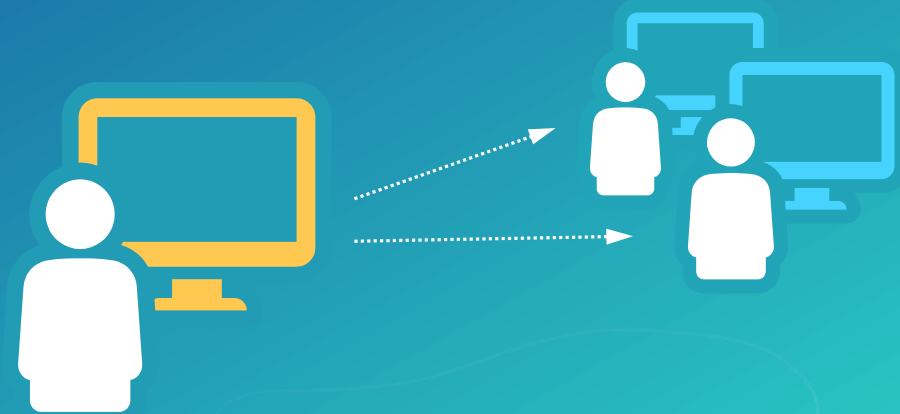
Sole Presenter

Single computer used for presentation

Arial

If you will be distributing your PowerPoint presentation to **others outside of Esri**, or using various computers to present please use Arial.

Using Arial gives your PowerPoint presentation the flexibility to be used by many people on various machines without the risk of font compatibility and changing the look of your layout.



Use Arial if...

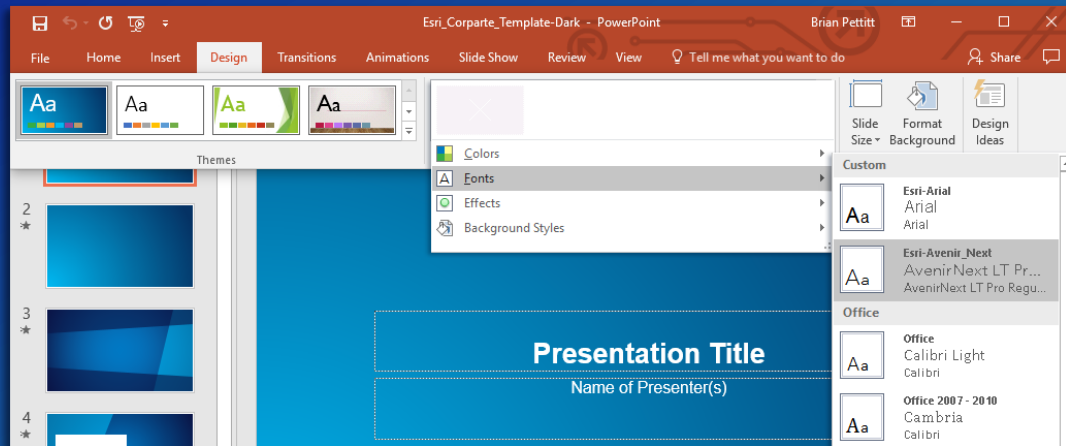
Multiple Users / Presentation Distributed to others

Presentation used on multiple computers

How to Change Your Theme Fonts to Avenir Next

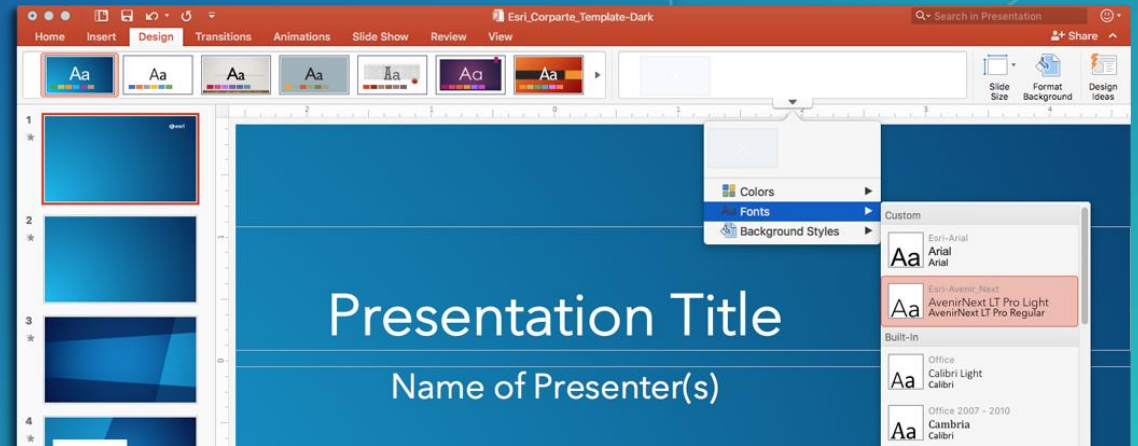
Windows

Select: Design
Variants (arrow)
Fonts > Esri-Avenir Next

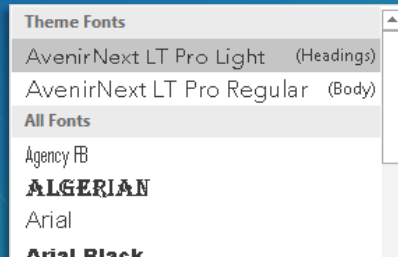


Mac

Select: Design
Variants (arrow)
Fonts > Esri-Avenir Next



What if my
fonts don't
change?



*If the text boxes on your slides are not using
(Heading) or (Body) fonts from the Theme Fonts
section, they will not update correctly.
You will have to replace them manually.*

How to Test if you're using Avenir Next

If you have Avenir Next installed,
the two Qs will match.



Picture



Live Text

Did you know?

To quickly update any current presentation

Copy and paste your slides from your **current** deck into the **newest** template. The title and ending logo slide will update automatically.


For More Templates, Sample Files, and Icons See

<https://compass.esri.com/resources/presentations/Pages/Main.aspx>

Videos not working?

For video in PowerPoint, animated GIF is recommended. AVI and WMV (native PC files) will work best on a PC platform. H.264 MP4 will work only on PowerPoint 2013 and later.

Aspect Ratio Test



If this shape does not appear as
a perfect circle, adjust the aspect
ratio of your display until it does.

Try the resolution 1920x1080 for
16:9 displays.