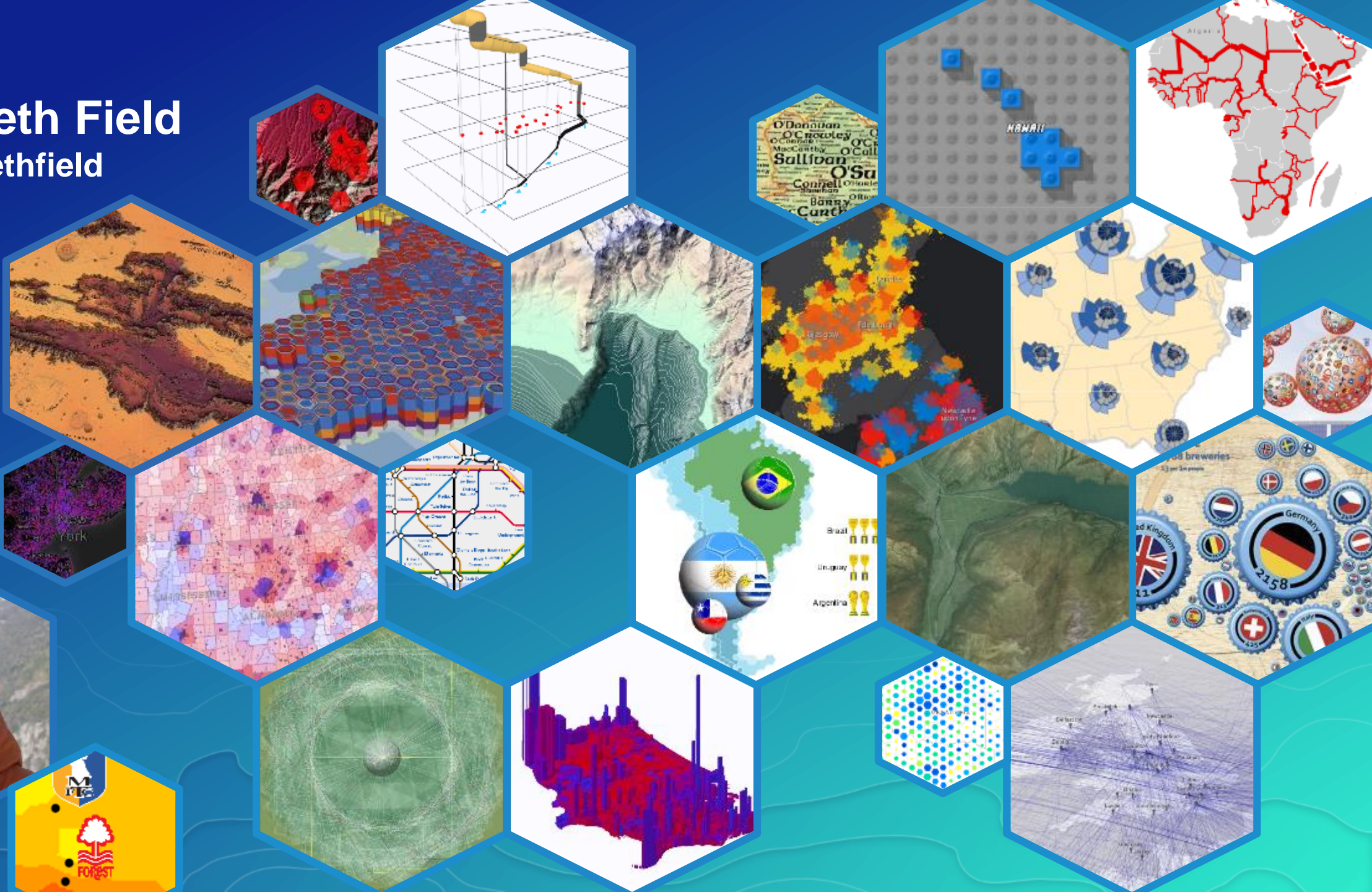


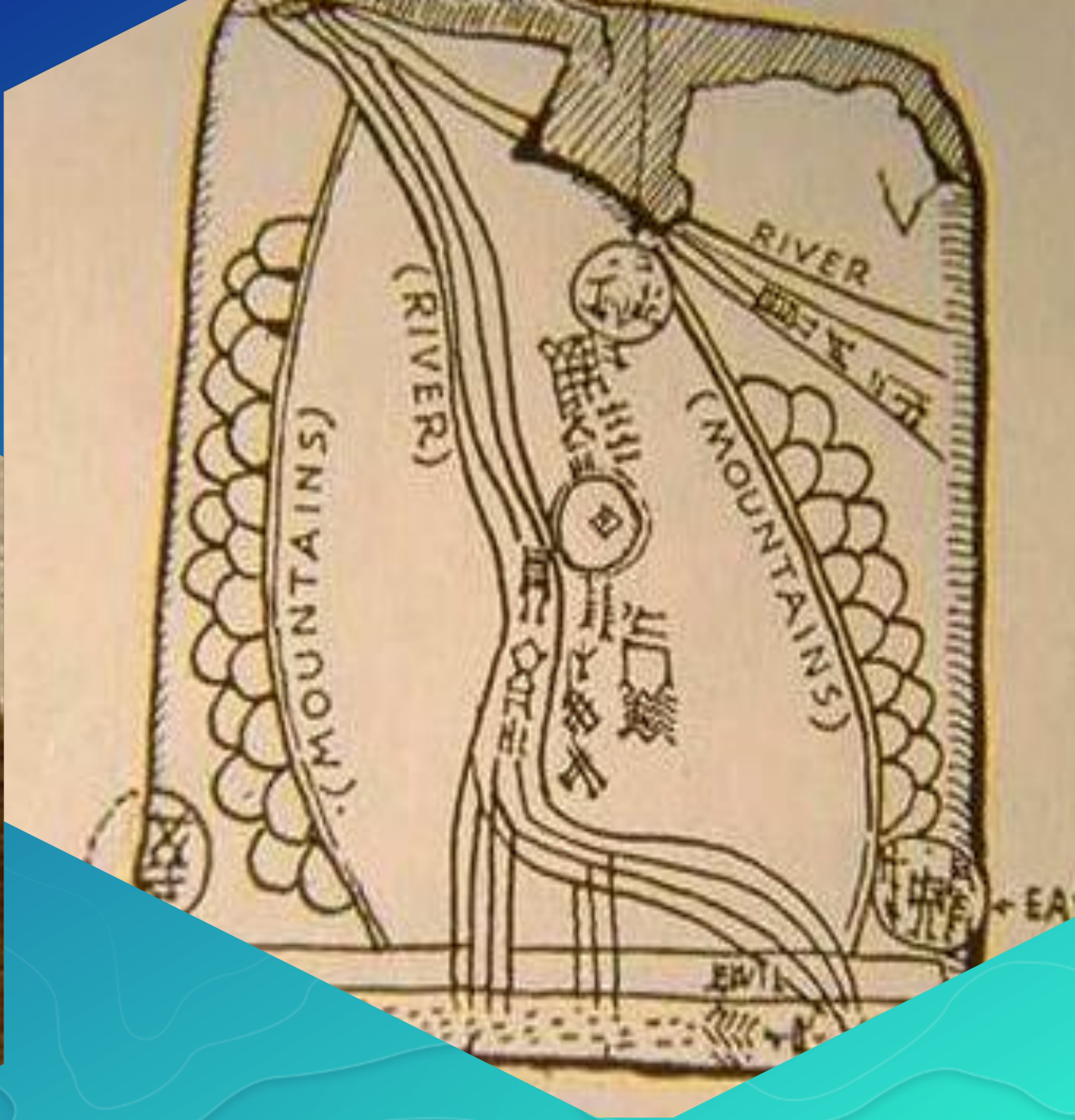
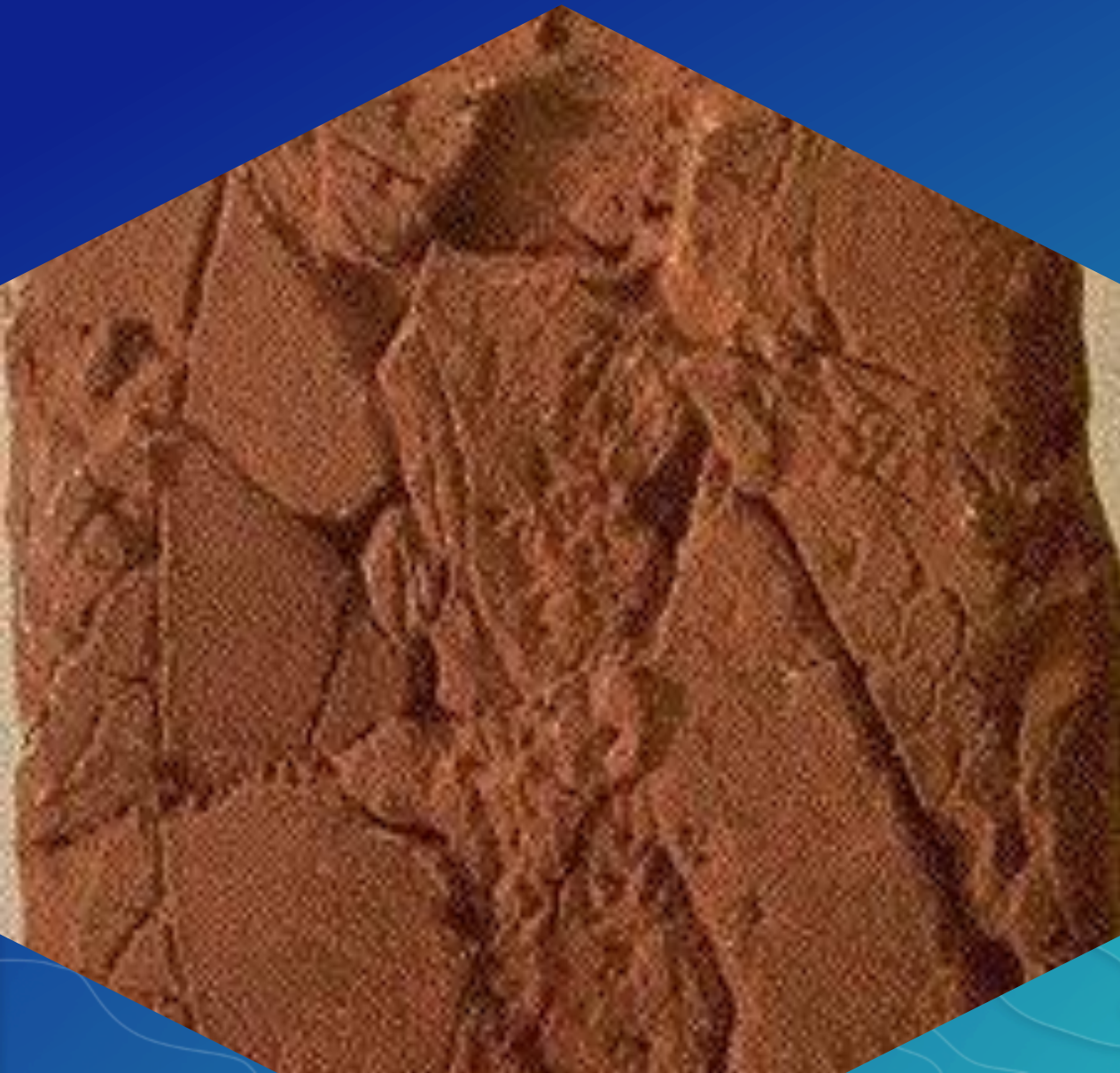
# Map Design for Relief Representation

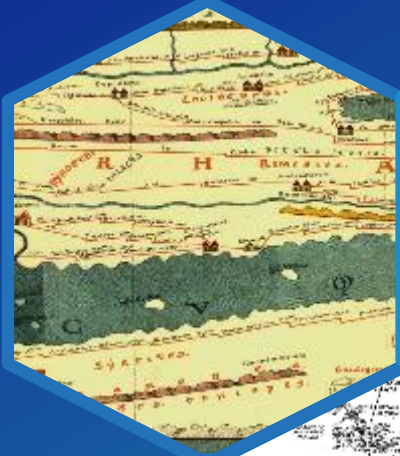
Kenneth Field and John Nelson

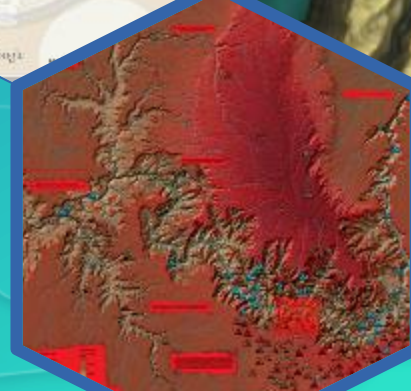
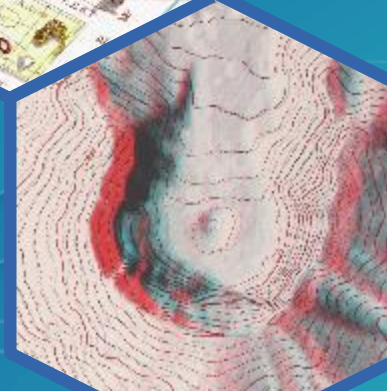
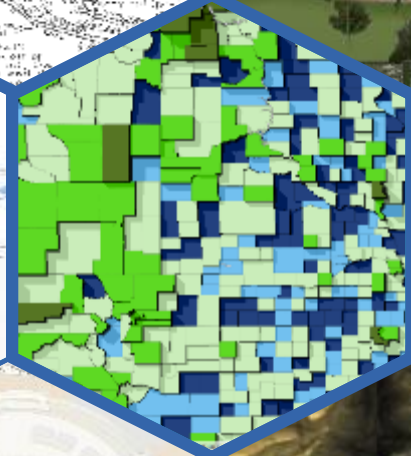
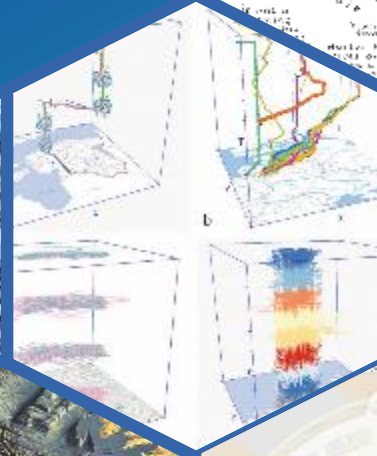




[illegible]









**Eduard Imhof**  
**Cartographic**  
**Relief**  
**Presentation**

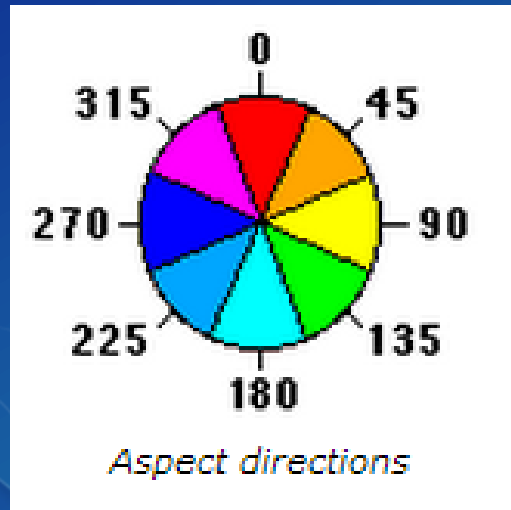




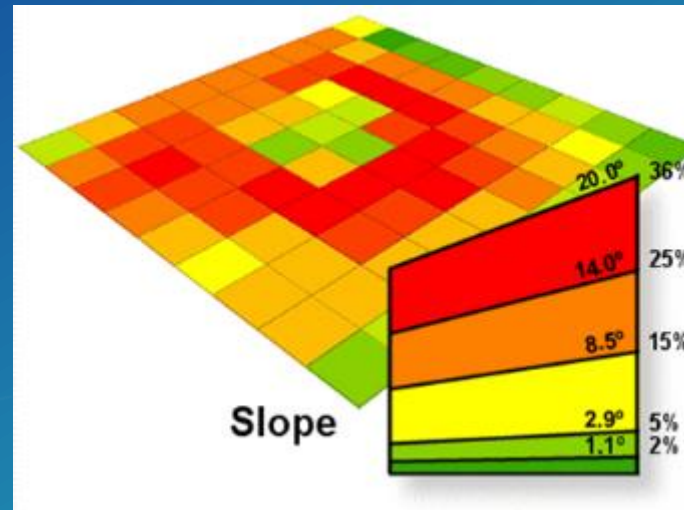


## Some basics

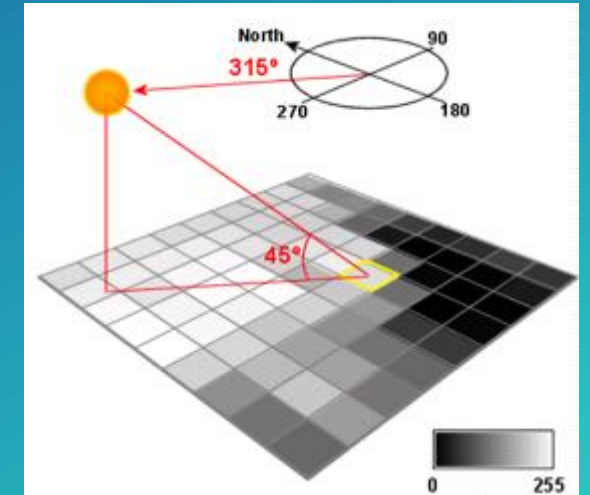
### Aspect



### Slope



### Illumination

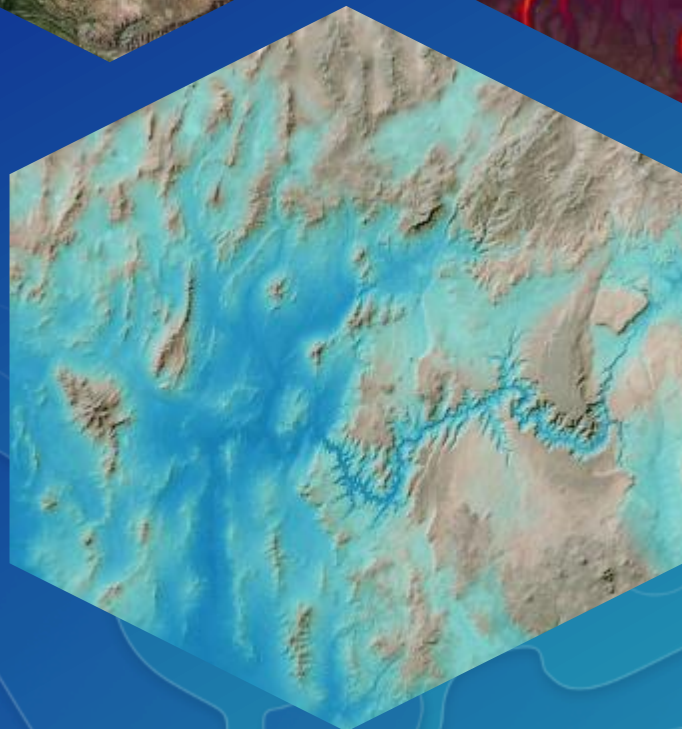


# Terrain Tools v1.1

<http://arcg.is/1dHOcNj>

# Tour

<http://arcg.is/1KmxlDe>



# One more thing

Actually...a few more things

# Cartography.

## The book (Nov 2017)

[esripress.esri.com](http://esripress.esri.com)

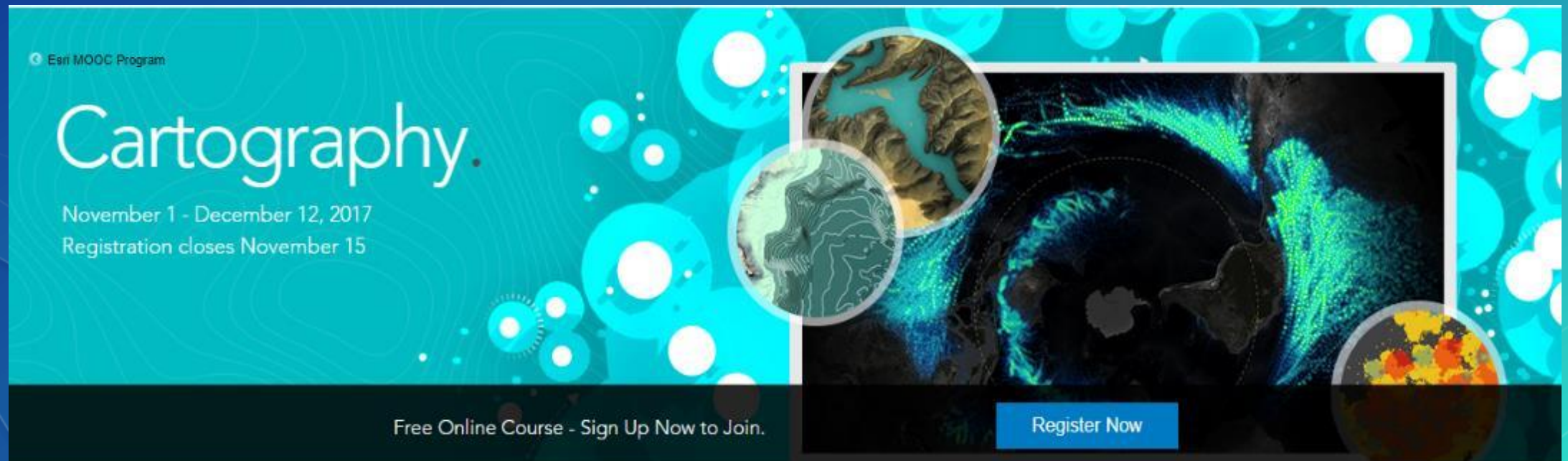
# Cartography.



Kenneth Field

# Cartography. The MOOC

[esri.com/mooc/cartography](https://esri.com/mooc/cartography) (Nov 2017)

A promotional banner for the 'Cartography. The MOOC' course. The background is a vibrant teal with a pattern of white and light blue circles of varying sizes, some with internal patterns. On the left, the word 'Cartography.' is written in a large, white, sans-serif font. Below it, in a smaller white font, are the dates 'November 1 - December 12, 2017' and 'Registration closes November 15'. At the top left, in a small white font, is 'Esri MOOC Program'. On the right side, there is a large, dark rectangular area containing a stylized map of the world with glowing green and blue lines. Overlaid on this are three circular inset images: the top one shows a topographic map of a mountain range, the middle one shows a map of the Americas with white contour lines, and the bottom one shows a map of the Americas with yellow and orange dots. At the bottom left, the text 'Free Online Course - Sign Up Now to Join.' is written in white. At the bottom right, there is a blue rectangular button with the text 'Register Now' in white.

Esri MOOC Program

## Cartography.

November 1 - December 12, 2017  
Registration closes November 15

Free Online Course - Sign Up Now to Join.

Register Now

[carto.maps.arcgis.com](http://carto.maps.arcgis.com)

[cartonerd.com](http://cartonerd.com)

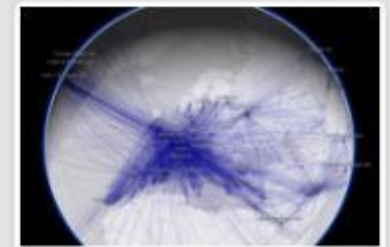
[adventuresinmapping.com](http://adventuresinmapping.com)

[mapdesign.icaci.org](http://mapdesign.icaci.org)

## Compelling Cartography

Map Gallery to showcase examples of high quality map design in an online environment

Search maps



# Other sessions

How maps work (KF/WJ)

Tue 15:15 | Thu 13:30

Amazing and Inspiring maps (KF/JN)

Tue 08:30 | Wed 10:15

Thematic map design (KF/JN)

Tue 13:30 | Fri 09:00

3D Cartographic Techniques (NS/KF)

Wed 13:30 | Thu 15:15

Map Design for relief representation (KF/JN)

Wed 08:30 | Thu 10:15

Designing Story Maps to Change Hearts & Minds (JN/JB)

Tue 10:15

Designing Esri's Vector Tile Basemaps (WJ/AS)

Tue 14:00 | Wed 12:00

Styling Vector Basemaps (WJ/AS)

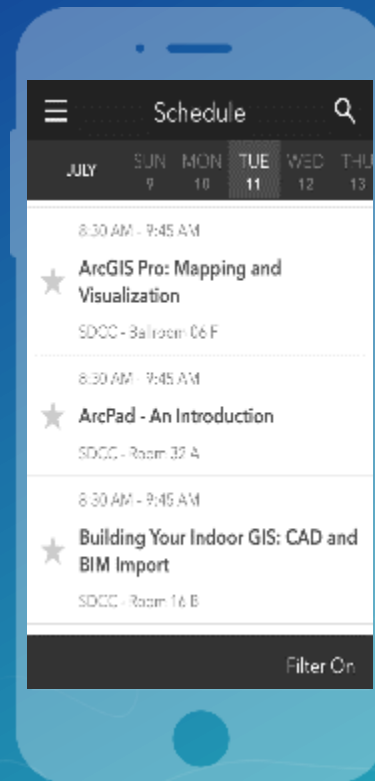
Thu 10:15

# Thank you...Please take our Survey

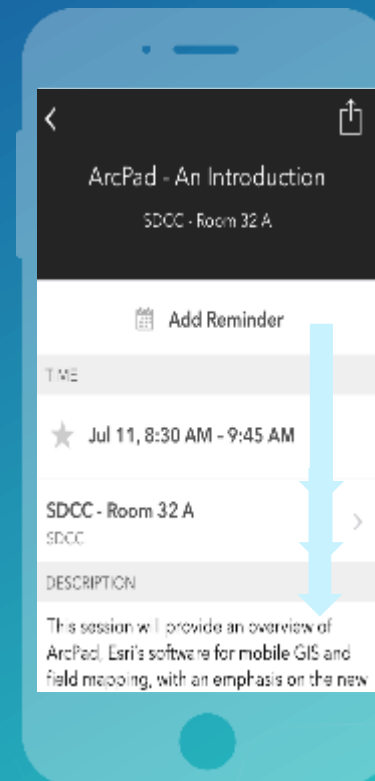
**Download the Esri Events app and find your event**



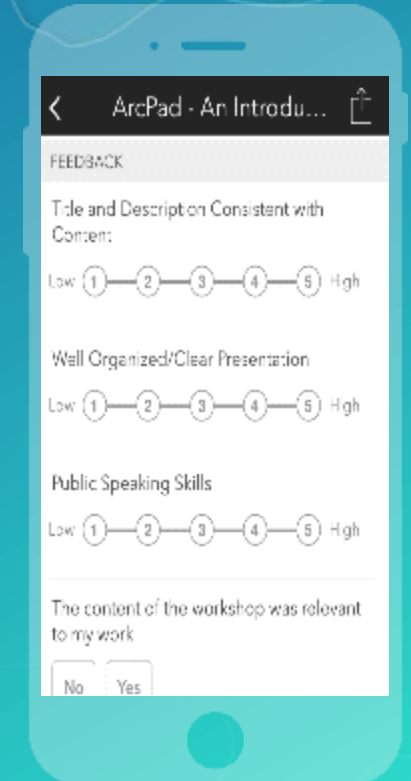
**Select the session you attended**



**Scroll down to find the survey**



**Complete Answers and Select "Submit"**





esri

THE  
SCIENCE  
OF  
WHERE

kfield@esri.com

John\_Nelson@esri.com



@kennethfield

@john\_M\_Nelson