

ArcGIS Web Adaptor Basics

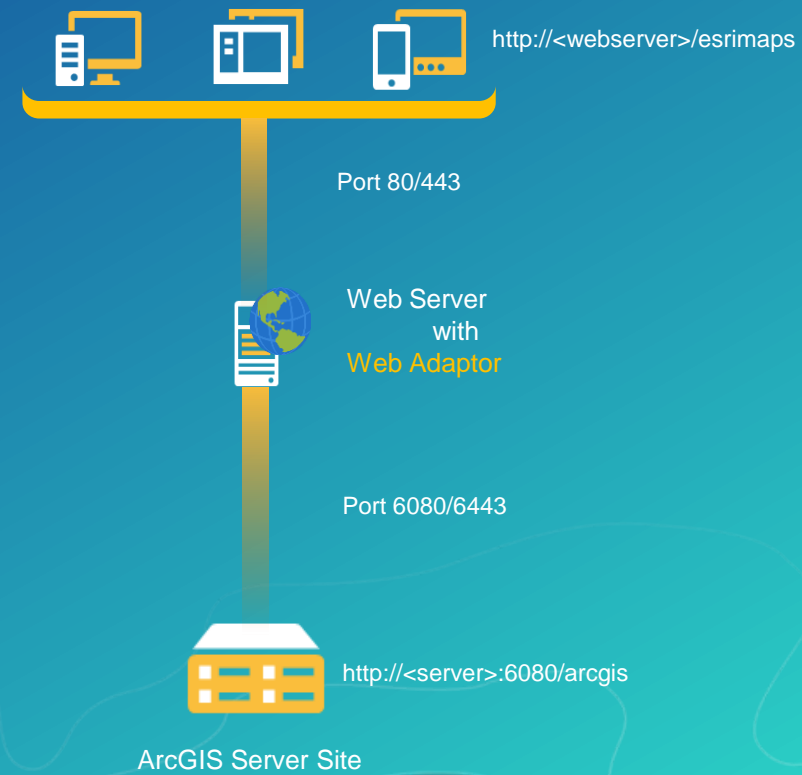
Subrat Bora

Agenda

- What is Web Adaptor
 - Why is it needed
- Benefits
- Deployment scenarios
- Demo
 - Basic Installation and configuration
 - Setting up Integrated Windows Authentication (IWA)

What is Web Adaptor

- Integrates ArcGIS Server and Portal for ArcGIS with an existing Web Server
 - Compatible with IIS or Java Application Servers
- Required
 - ArcGIS for Server with Integrated Windows Authentication (IWA)
 - Portal deployment
- Optional
 - With ArcGIS Server
 - With HA Portal
- Platform independent
- Multiple web adaptors on the same web server
- Requires .NET Framework 4.5 or higher
- Java version 8.x

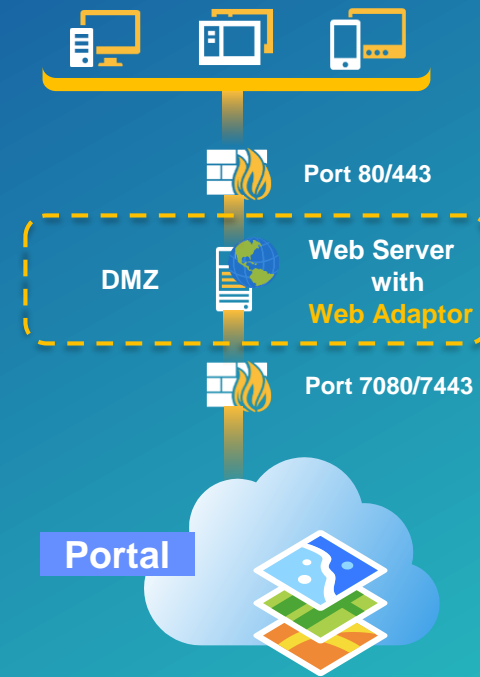
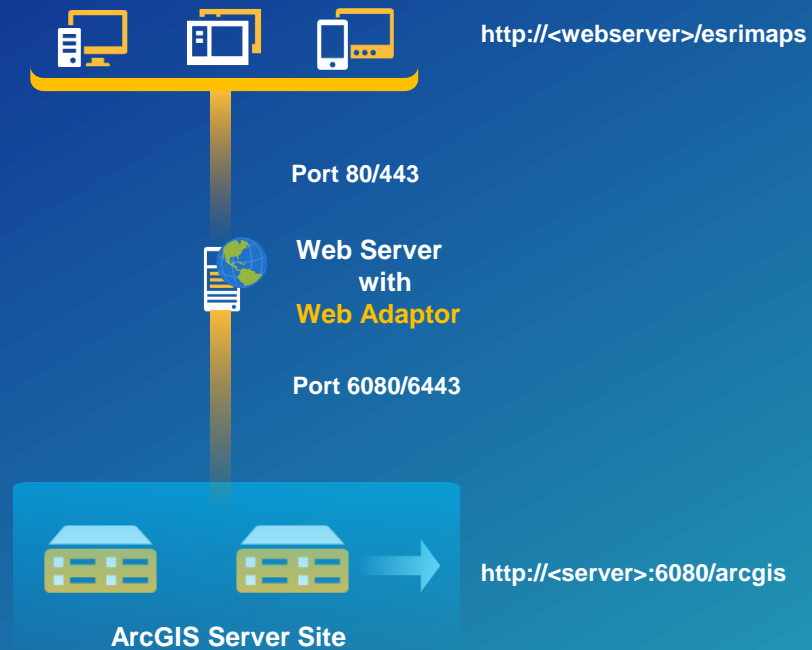


Benefits

- Serve GIS Web Services or Portal's content via standard http/https ports 80/443
- Allows custom site name other than /arcgis
 - `https://<server>:6443/arcgis` → `https://<server>/esrimaps`
- Load Balances incoming requests to GIS Servers
- Blocks administrative access to the ArcGIS Server Site
- Secure Portal or GIS Server with web-tier authentication
 - Using enterprise identity store that web server supports
 - Integrated Windows Authentication/Single Sign-on
 - PKI
 - LDAP(JAVA WA)

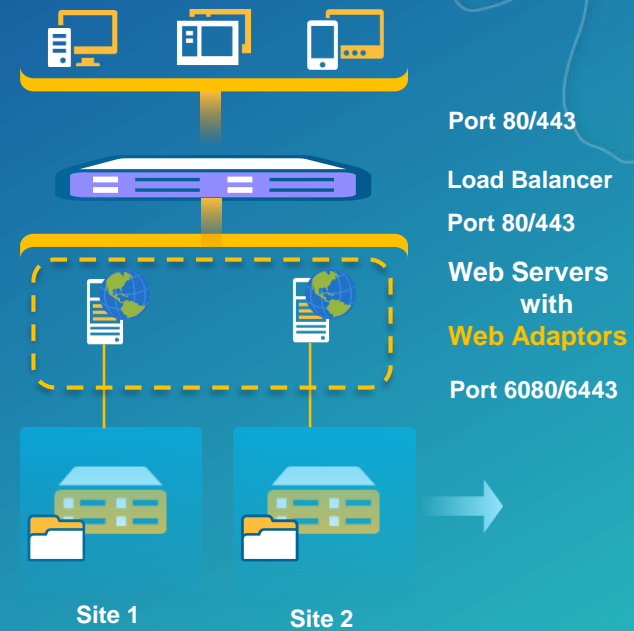
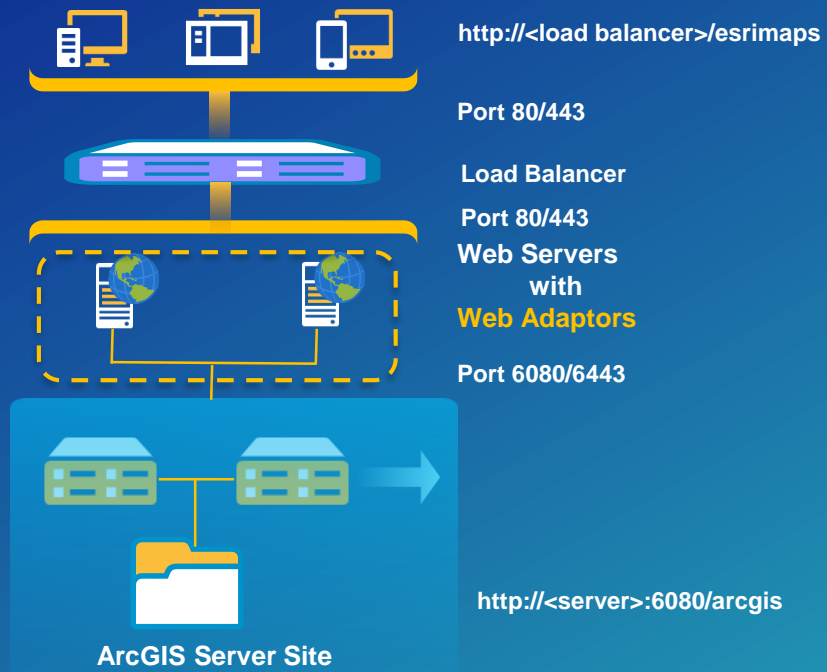
Deployment Scenario

Single Web Adaptor



Deployment Scenario

Web Adaptor High Availability



Sessions

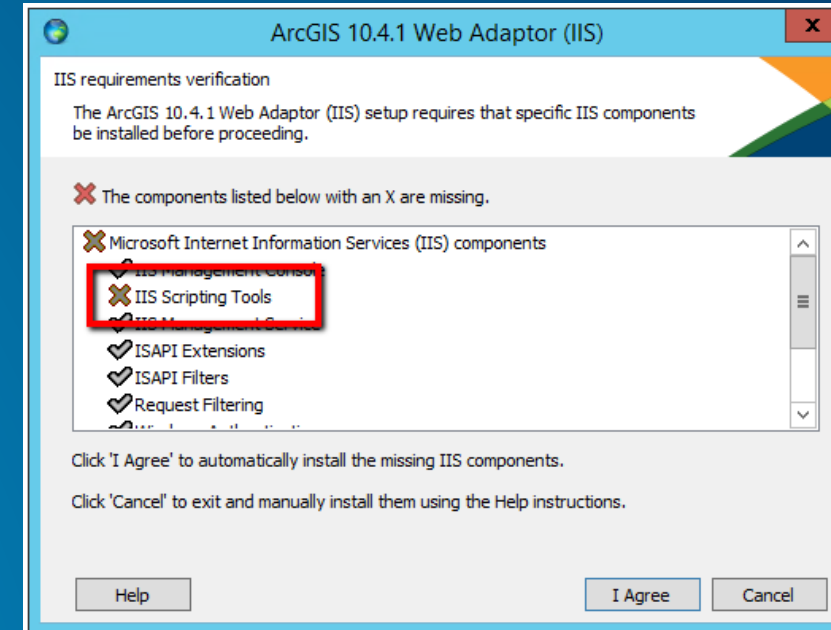
High Availability and Disaster Recovery for ArcGIS Enterprise

Thursday: 3:15 PM

Location: Room 17B

Demo

- Installing the Web Adaptor on IIS
- Configuring with a ArcGIS Server Site
- Configuring Integrated Windows Authentication (IWA) with Active Directory



Takeaways

- Use web adaptor when you want to:
 - access the GIS Services through ports other than 6080/6443
 - Integrate GIS Server with an existing Web Server
- Multiple web adaptors and versions supported on a Single Web Server
- Easy installations: self-checking and installing of required IIS features
- Use Web Adaptor only when you need it
 - IWA (Single Sign-on)
 - Hardware/Network/Firewall restrictions
 - Portal Deployment
- Consider infrastructure while architecting GIS Server sites with Web Adaptor
- Performance consideration when using web-tier authentication
 - Consider disabling Windows Active Directory groups lookup
 - Consider Configuring ArcGIS Web Adaptor memory cache when using Groups from Enterprise Identity Store

Questions



Please Take Our Survey on the Esri Events App!

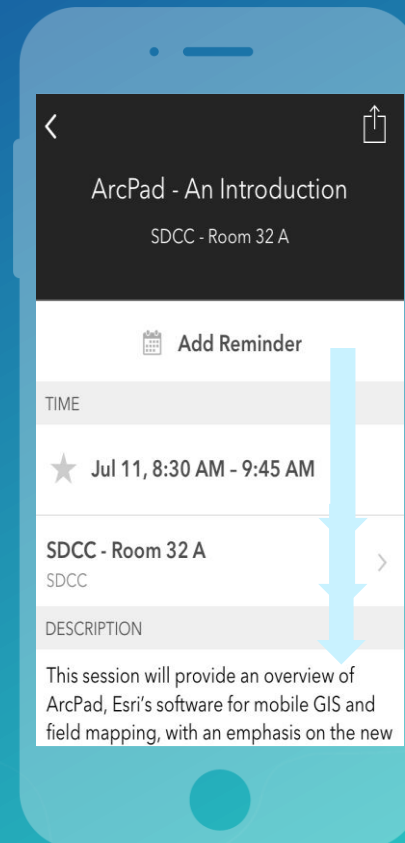
Download the Esri Events app and find your event



Select the session you attended



Scroll down to find the survey



Complete Answers and Select "Submit"

