

Operations Dashboard for ArcGIS: An Introduction

Patrick Brennan, Chris Olsen, David Nyenhuis

Operations Dashboard for ArcGIS

- A free Windows- and browser-based application that you can use on your desktop or tablet
- Monitor assets, events or activities for 'at-a-glance' decision making
- Provides key insights about your data on a single screen
- Support for real-time data
- Cross platform extensibility



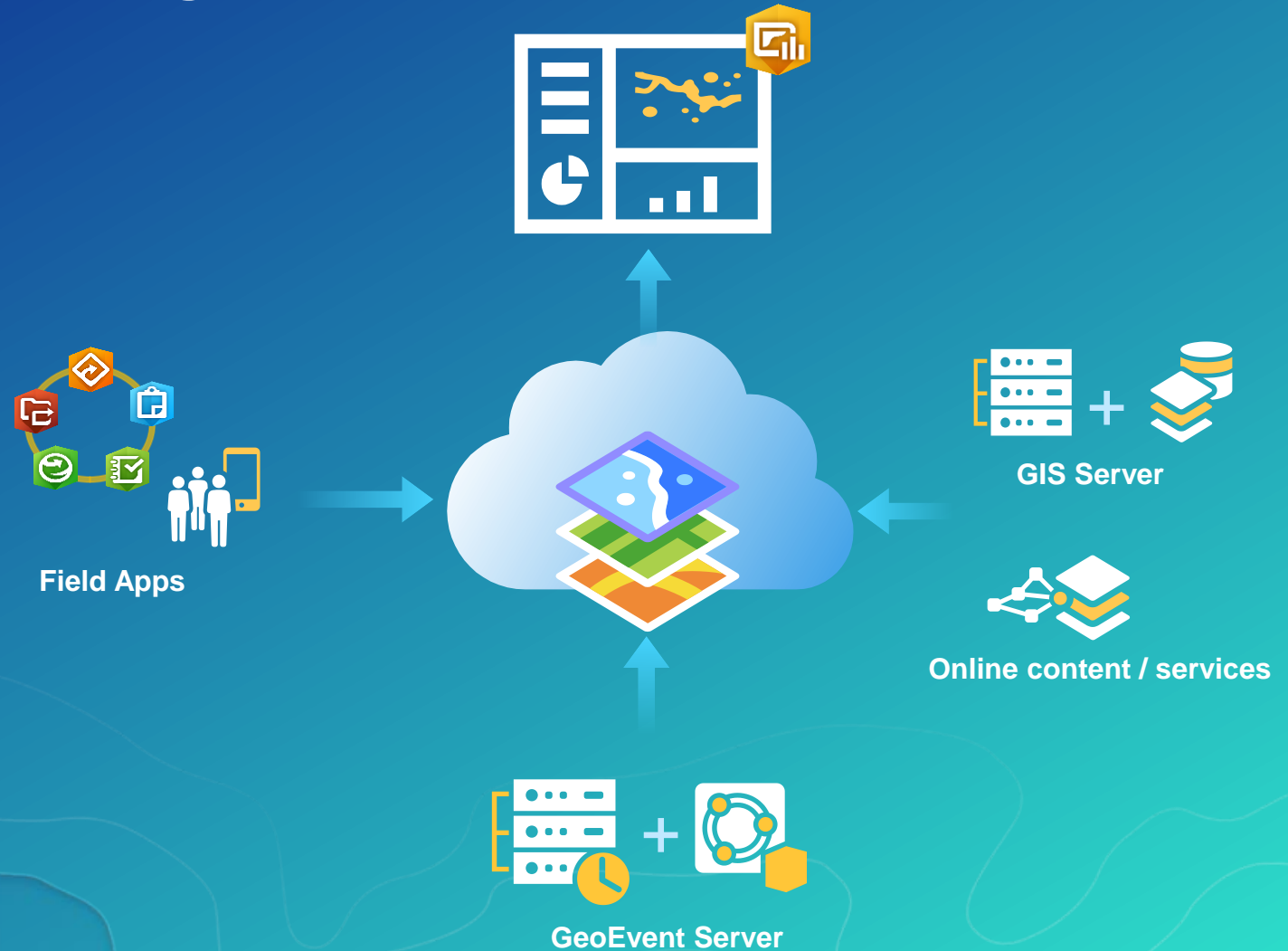
Operations Dashboard for ArcGIS

- **Ready to use data visualizations**
 - Map, Legend
 - Charts: Bar, Pie, Histogram
 - Indicator, Gauge
 - List, Feature Details
- **Various map tools and feature actions**
 - Interact with the map (e.g. set layer visibility)
 - Perform actions on features (e.g. follow a moving truck)



Operations Dashboard | Bring data together

- **ArcGIS platform: bring data together**
 - Real-time data
 - Coordination of work across an organization
 - Sensor data, social media, GPS locations, etc.
 - Other data
 - GIS Server
 - Online content and services
- **Operations Dashboard: present the data in intuitive/compelling ways**



Operations Dashboard | Supported Platforms

- **ArcGIS Online or Portal for ArcGIS**
- **Operations Dashboard running on Windows**
 - ClickOnce deployment
 - Both an authoring and viewing app
 - Supports multiple-display and single-display view
 - Requires named user account
 - Level 2 to author and share
- **Operations Dashboard running in browser**
 - Supports single-display view
 - Supports anonymous access



Operations Dashboard | Key Usage Patterns

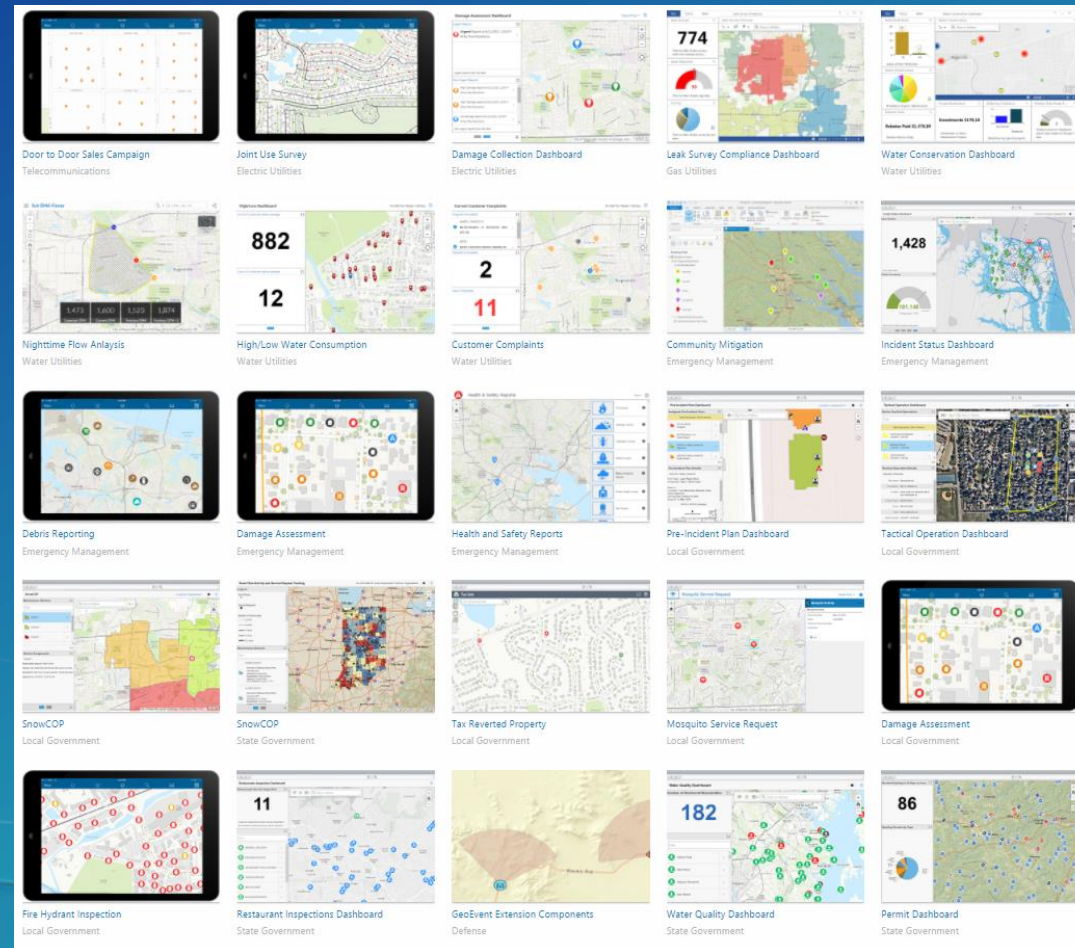
- **Monitor operations in real-time**
 - IoT (e.g sensor feeds)
 - Coordination of work
- **Event Management**
 - Visualize people, weather, activities
- **Common Understanding**
 - Visualize and compare business data



Informed decisions via ...
Common picture
Key performance indicators

Operations Dashboard | Solutions Gallery

- Local Government
- State Government
- Electric
- Gas
- Water
- Emergency Management
- Defense
- Etc



Link: <http://solutions.arcgis.com/gallery>



Demo

Authoring and sharing operation views

We're evolving ...



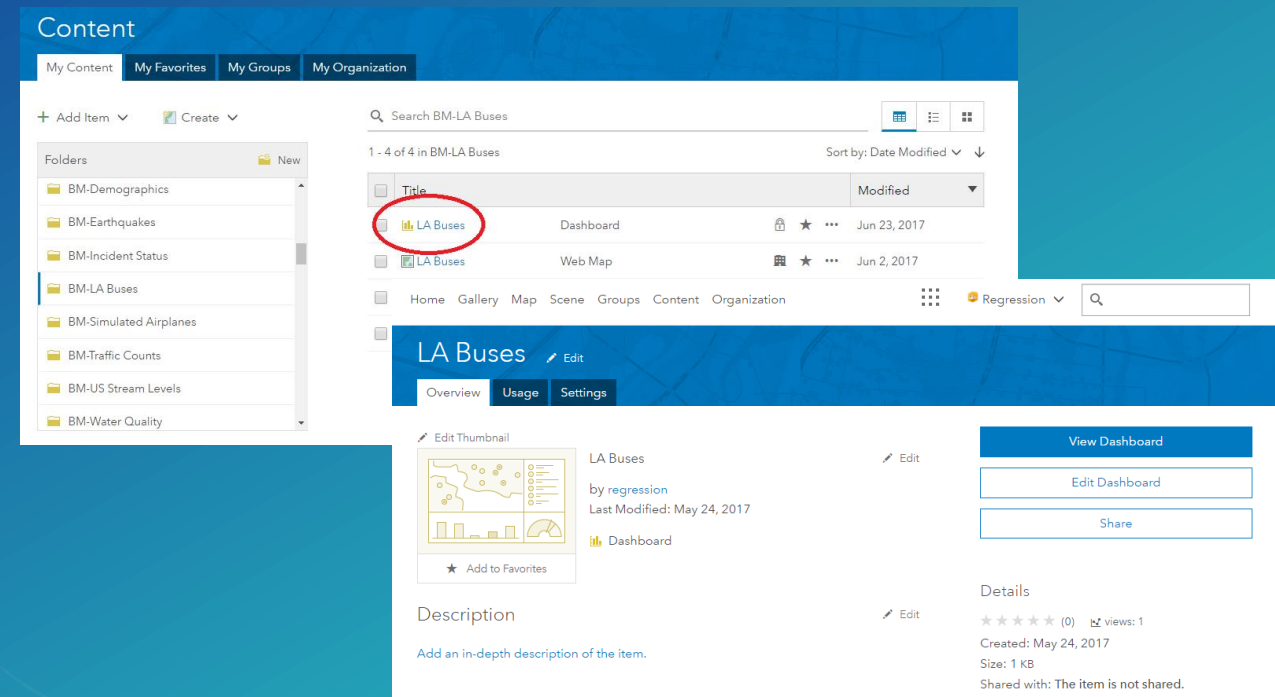
Operations Dashboard | Core philosophy

[Operations] dashboards must be designed to support real-time situation awareness. They must grab your attention when it's needed, they must make it easy to spot what's most important in a screen full of data, and they must give you the means to understand what's happening and respond without delay. To do this, they require expert visual design and must express measures of performance clearly, accurately, directly, and without distraction.

- Stephen Few

Operations Dashboard | Dashboard item type

- New features/functions brought to life using the new 'dashboard' item
- Intended to serve the same purpose as operation views
 - Different implementation details
- There will be differences between operation views and dashboards when first released
- Operation views are supported by the platform into the future
 - Evaluate your requirements/ choose what's best for you
- Familiar workflow:
Author web map -> Author dashboard -> Share



The screenshot displays the ArcGIS Online 'Content' page. On the left, a 'Folders' list includes 'BM-Demographics', 'BM-Earthquakes', 'BM-Incident Status', 'BM-LA Buses', 'BM-Simulated Airplanes', 'BM-Traffic Counts', 'BM-US Stream Levels', and 'BM-Water Quality'. The main area shows a list of items under the search 'Search BM-LA Buses'. The 'LA Buses' item is highlighted with a red circle. Below the list, the 'LA Buses' item details are shown, including a thumbnail, description, and sharing options.

Title	Type	Modified
LA Buses	Dashboard	Jun 23, 2017
LA Buses	Web Map	Jun 2, 2017

LA Buses [Edit](#)

[Overview](#) [Usage](#) [Settings](#)

[Edit Thumbnail](#)

LA Buses
by regression
Last Modified: May 24, 2017

[Add to Favorites](#)

[View Dashboard](#)
[Edit Dashboard](#)
[Share](#)

Description [Edit](#)

Add an in-depth description of the item.

Details

★ ★ ★ ★ (0) [views: 1](#)
Created: May 24, 2017
Size: 1 KB
Shared with: The item is not shared.



Part of your ArcGIS Online organization now! Beta refresh coming soon.

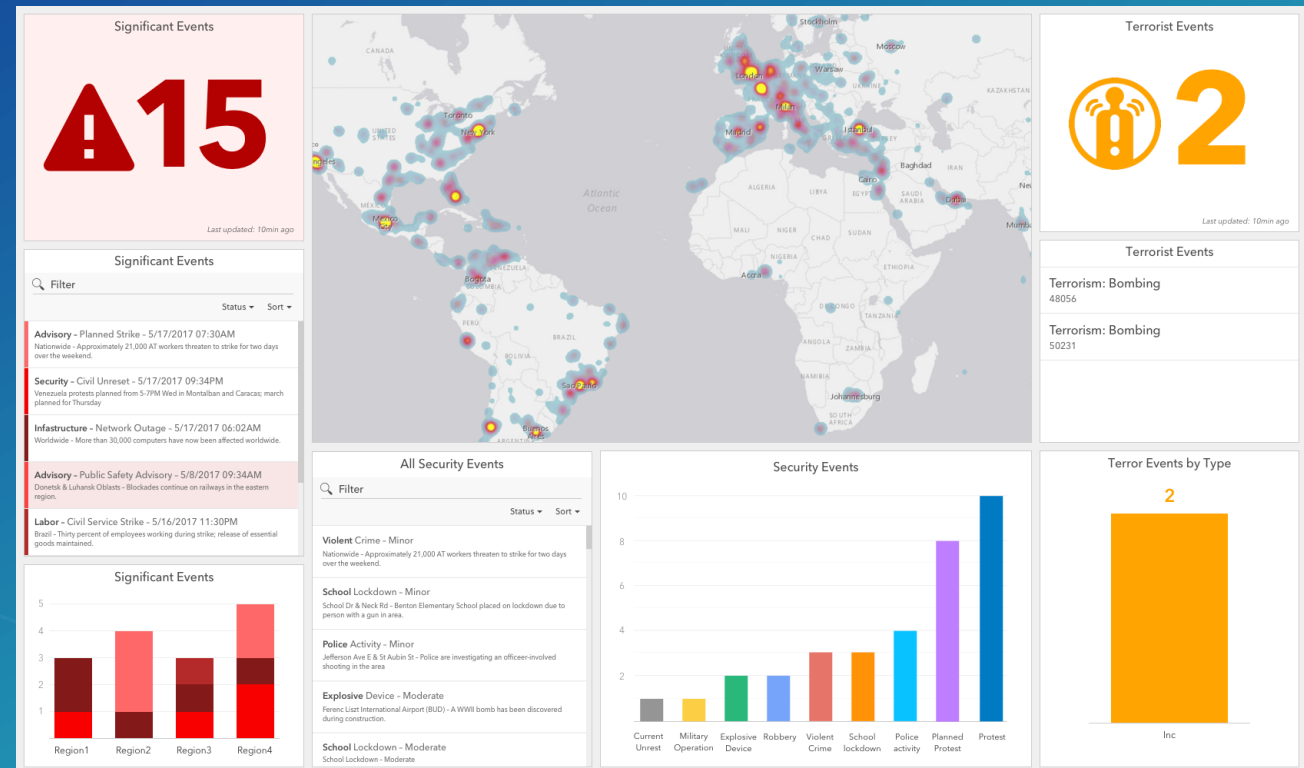


Demo

Top things to look for in beta

Operations Dashboard | Highlights

- No install required
 - Author and view in browser
- Easy Access
 - Home page, App Switcher
- Better maps
 - Smart Map Rendering
 - Stream Layers
 - Labels
- Powerful new layout capabilities
 - Grouping, stacking
- Improved date-based filtering
- Completely re-vamped data visualizations
 - Indicators, Charts, Etc
- Improved Interactivity *
 - Runtime filtering / Cross filtering



* Not included in beta

Operations Dashboard | TO DO before for final release

- Interactivity framework
 - UI components
- Refine dashboard author's configuration experience
- More (and more responsive) map tools
- Finish off our list of supported visualizations



Operations Dashboard | Projected Timeline

AGOL 5.1 (March)

- New item: 'dashboard'
- AGOL integration

Code Freeze (mid-Sept)

- Functionally Complete

ArcGIS Ent 10.6 (Dec)

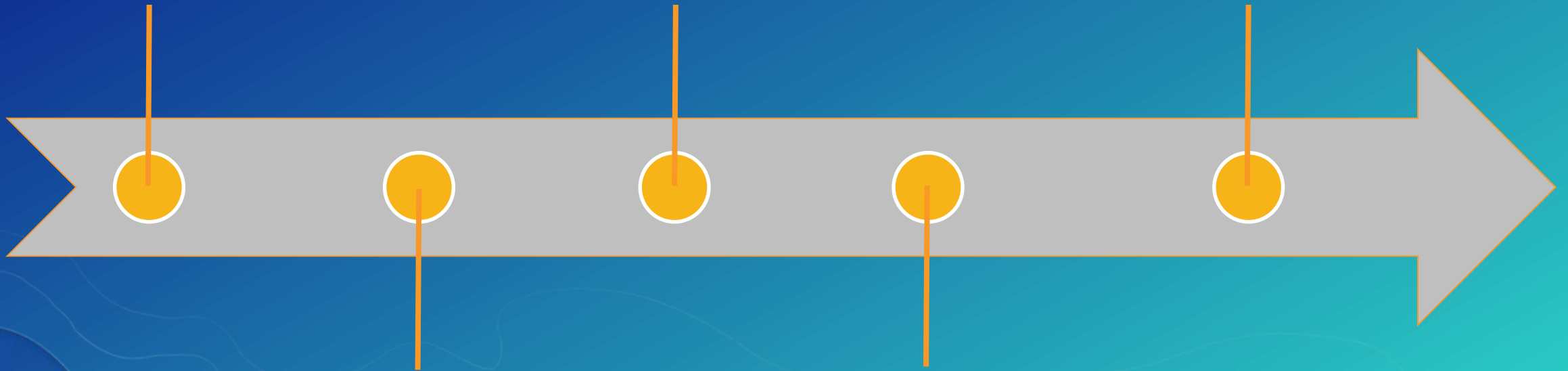
- Portal Support

Beta refresh (July)

- Configure 'from scratch'

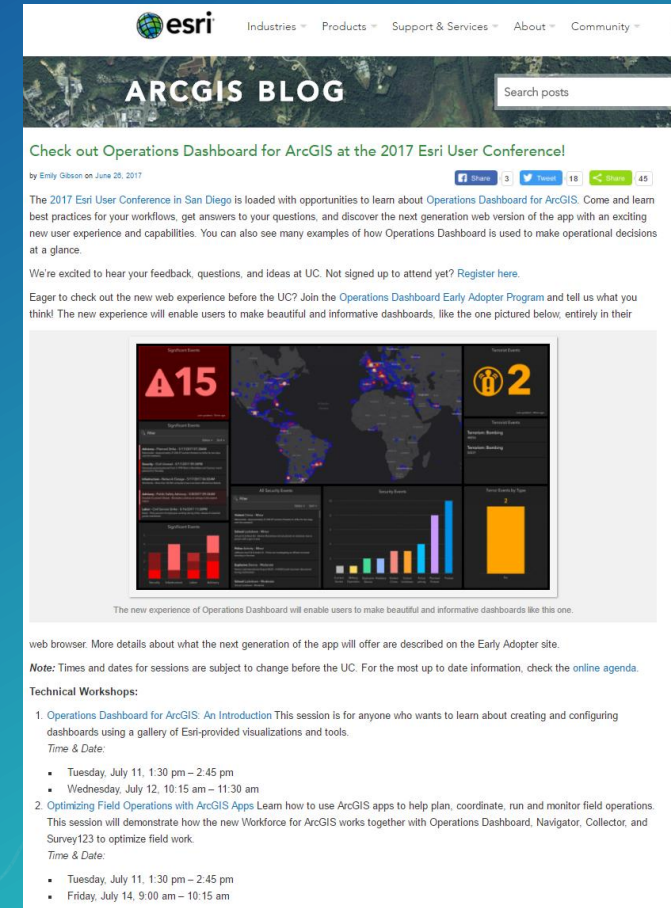
AGOL (Nov)

- General Release



Operations Dashboard | Users Conference

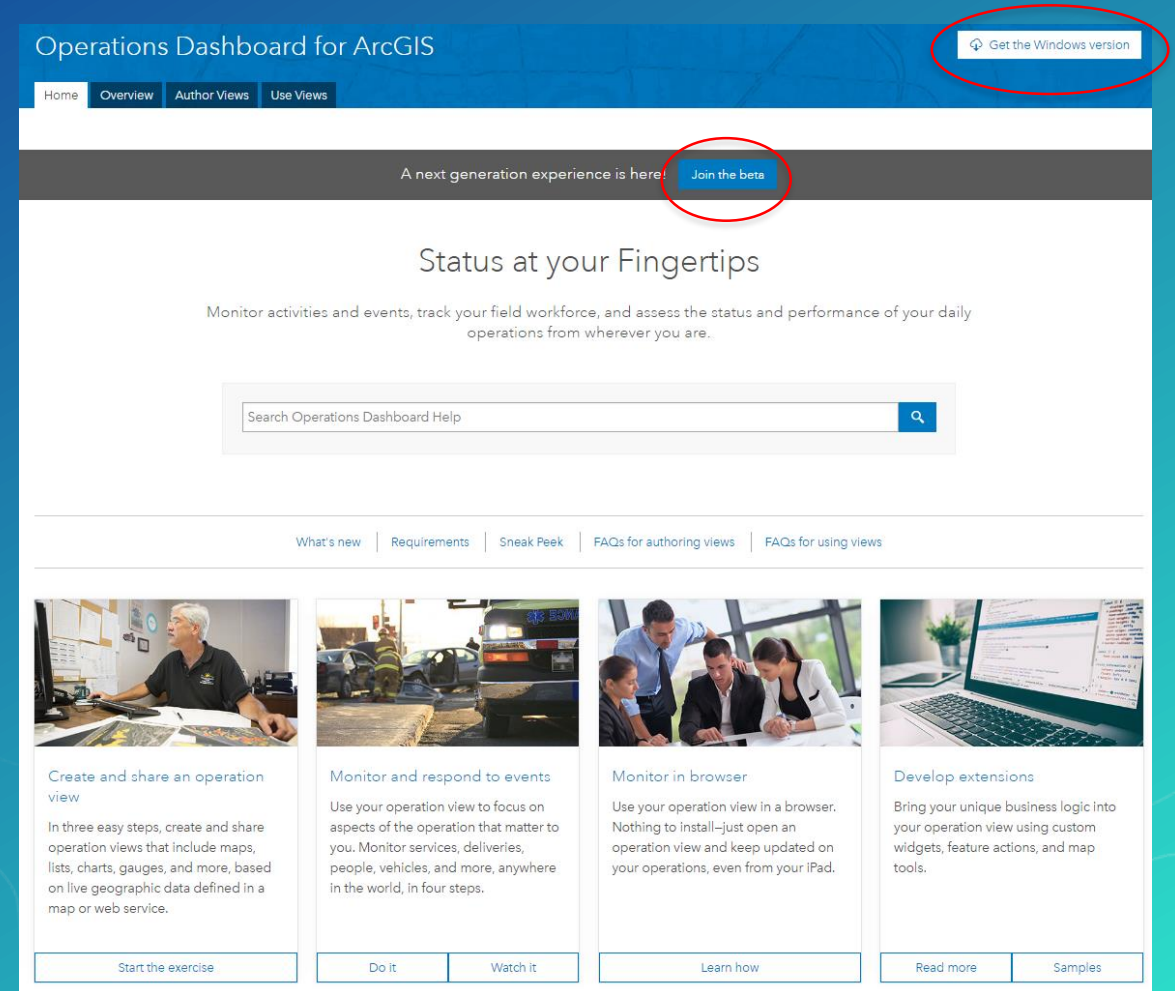
- **Technical Workshop:**
 - **Operations Dashboard for ArcGIS: An Introduction**
 - Tuesday, July 11, 1:30 pm -2:45 pm
 - Wednesday, July 12, 10:15 am -11:30 am
 - **Optimizing Field Operations with ArcGIS Apps**
 - Tuesday, July 11, 1:30 pm -2:45 pm
 - Friday, July 14, 9:00 am -10:15 am
- **Demo theater:**
 - **Operations Dashboard for ArcGIS: Building Effective**
 - Wednesday, July 12, 12:30 pm -1:15 pm
 - **Operations Dashboard for ArcGIS: Monitoring Live Field Edits**
 - Tuesday, July 11, 12:30 pm -1:15 pm
 - **Operations Dashboard for ArcGIS: Extending Operation Views**
 - Thursday, July 13, 9:30 am -10:15 am



Link: <https://blogs.esri.com/esri/arcgis/2017/06/26/>

Operations Dashboard | Useful links

- [Get the Windows app](#)
- [Join our beta program](#)
- [Start a conversation on GeoNet](#)
- Email us at: dashboard4arcgis@esri.com



Link: <http://doc.arcgis.com/en/operations-dashboard/>

Please Take Our Survey on the Esri Events App!

Download the Esri Events app and find your event



Select the session you attended



Scroll down to find the survey



Complete Answers and Select "Submit"





esri

THE
SCIENCE
OF
WHERE