

UC



Workforce for ArcGIS

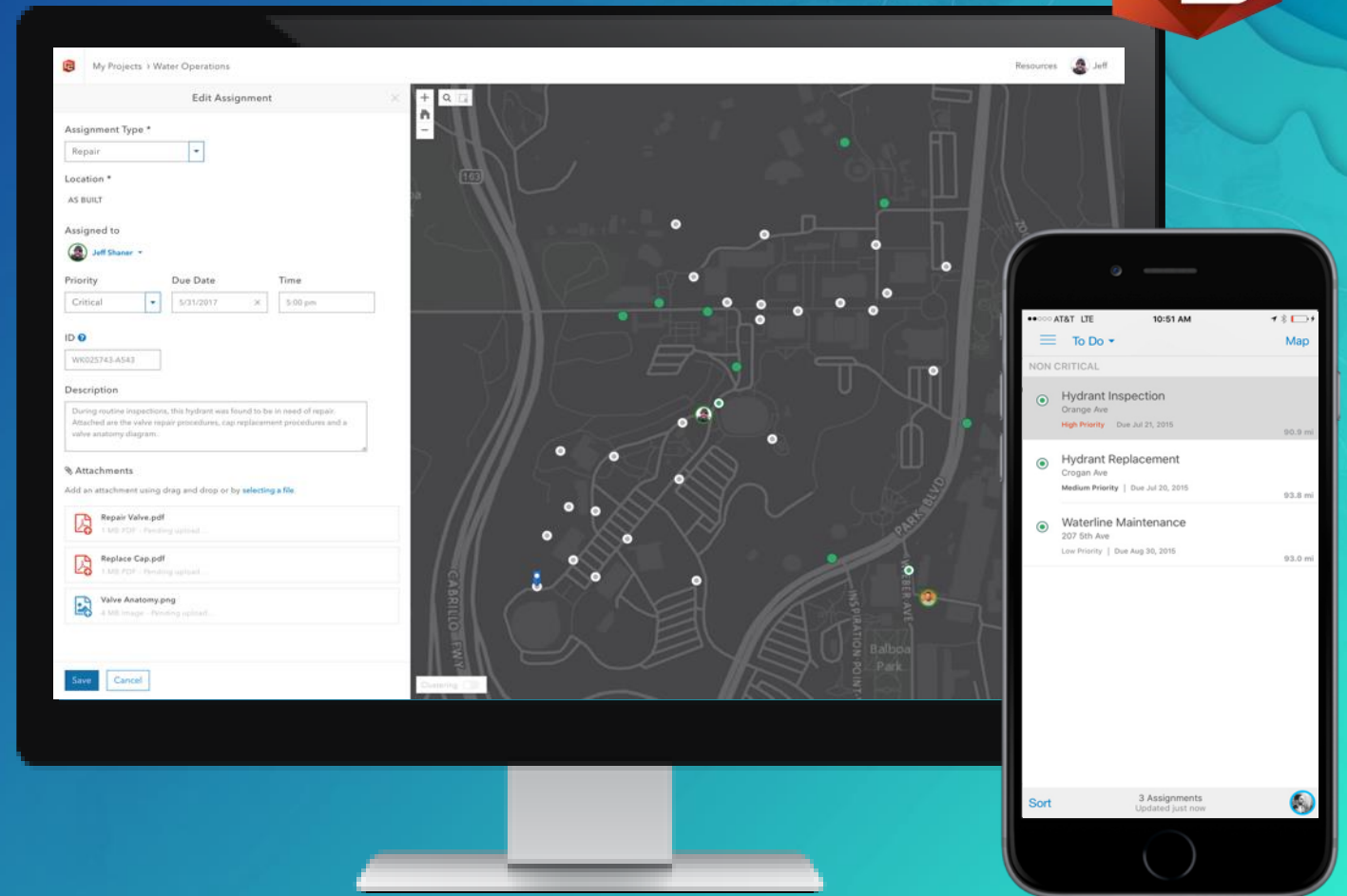
An Introduction



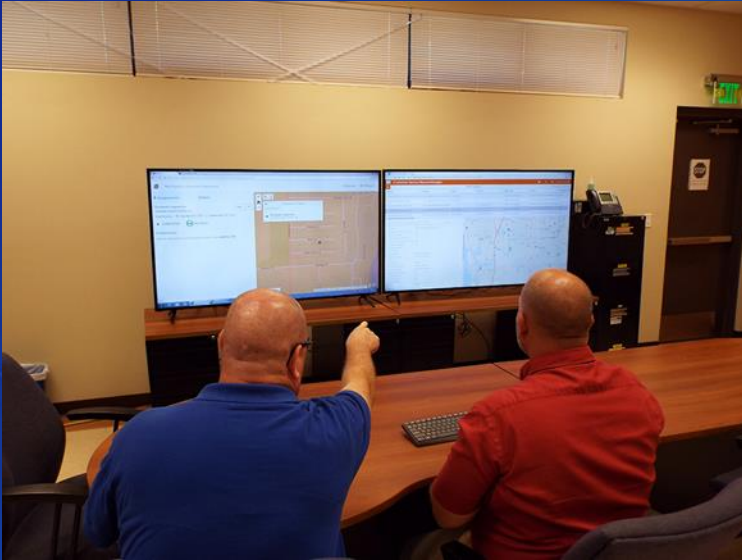
Workforce for ArcGIS| Coordinating field to office workflows



- Optimize Daily Field Operations
- Know where your workers are and where they have been
- Efficiently plan, coordinate and assign work
- Complete work using ArcGIS Apps and report status



Workforce for ArcGIS| How is it being used?



Collection and Asset Maintenance

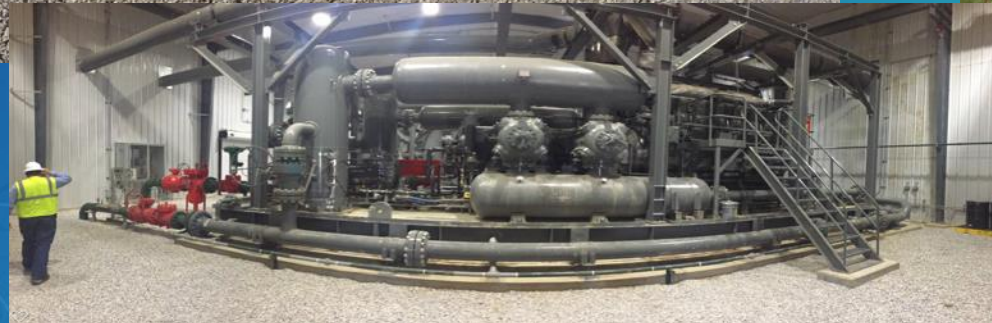


Event management



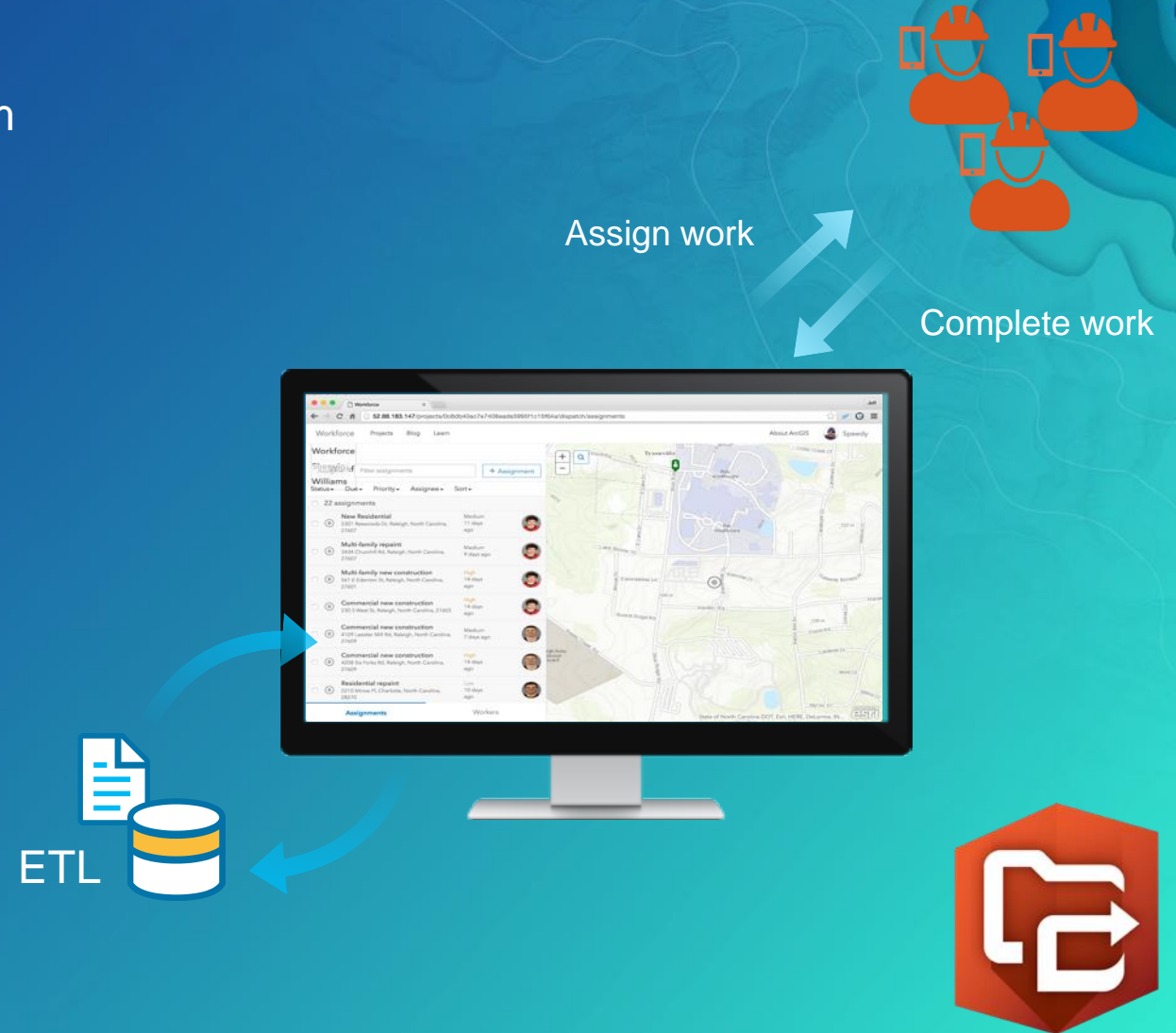
Situational Awareness

User Story: Rice Energy, Pennsylvania



Workforce for ArcGIS | Plan

- Fuse work management into the ArcGIS platform
 - Scripts, ArcGIS Pro
- Create, Prioritize and Assign Work
- Manage planned work assignments
- React and respond to unplanned work



Workforce for ArcGIS | Administer Workforce Projects

- Create new Workforce Projects
- Configure assignment types
 - Configure app integration at the type level
- Add Dispatchers and Mobile Workers
 - Contact Number, Job Title, Notes
- Configure maps and layers
- Configure location tracks

Assignment types specify the different kinds of work that your mobile workers need to perform. When creating a new work assignment, dispatchers choose from a list of assignment types.

Add an Assignment Type

Enter a new type... + Type

Assignment Type

Valve Inspection	In Use
Meter Filter Separators	
Compressor Reading	
Pigging	
Road Crossing	
Corrosion Inspection	
Site Inspection	
PA One Call	
Meter replacement	

Edit User Details

Contact Number
909-793-2853
Adding a contact number allows mobile workers in this project to get in touch.

Job Title
Service Technician

Notes
Certifications:
- Measurement
- Compressor
- Confined spaces
Add notes for this user to describe their skills and inventory.

Cancel Save

About this Project

A summary has not been created for this project yet.

Open Project

Users:
24
23 Mobile Workers,
1 Dispatchers

Assignments:
68
9 Completed, 53 Assigned,
6 Unassigned

Maps:
Dispatcher map
Worker map
Open the maps in ArcGIS Online to add new layers.

Workforce for ArcGIS | Dispatch work assignments

- Create new work assignments
 - Individually
 - By Address
 - Using the Map
 - From features
 - Multiple at once
 - From a selection
 - Using scripts
- Assign, re-assign and cancel work
 - Individually, multiple at once
- Filter and sort assignments
- View mobile workers by status
- Search the map

The screenshot displays the 'Workforce for ArcGIS' interface. On the left, the 'Create an Assignment' form is visible, containing fields for 'Assignment Type' (Valve Inspection), 'Location' (Jacksonburg Site), 'Assigned to' (Zachary Schmitt), 'Priority' (Medium), 'Due' (03/09/2016), 'Work Order ID' (A12598), and 'Description' (Quarterly Valve Inspection Report required). Below these fields is an 'Attachments' section. On the right, the 'Assign a Worker' modal is open, showing a list of workers with their status and number of assignments. The workers listed are Jeff Shaner (12), Zachary Schmitt (0), Adam Rusmisl (5), Brian Schill (12), Brian LeMasters (3), Chris Rusmisl (4), Grant Curfman (0), John Ole- (0), Robert C. (0), Thomas T. (0), James Jo (0), and Andrew M. (0). A 'Filter workers' search bar is at the top of the modal. Below the worker list, there are filters for 'Status', 'Due', 'Priority', 'Assignee', and 'Sort'. A 'Clear filter' button is also present. The 'Priority' dropdown menu is open, showing options: None, Low, Medium (selected), High, and Critical.

Worker	Status	Due	Priority	Assignee	Sort
Jeff Shaner	WORKING	12			
Zachary Schmitt		0			
Adam Rusmisl		5			
Brian Schill		12			
Brian LeMasters		3			
Chris Rusmisl		4			
Grant Curfman		0			
John Ole-		0			
Robert C.		0			
Thomas T.		0			
James Jo		0			
Andrew M.		0			



Demo

Workforce for ArcGIS | Work Assignments

- **Properties**

- Status, Due Date, Priority, Assignee, Type

- **States**

- Unassigned, Assigned, In Progress, Paused, Completed, Declined
- Date/Time stamps

- **Priorities**

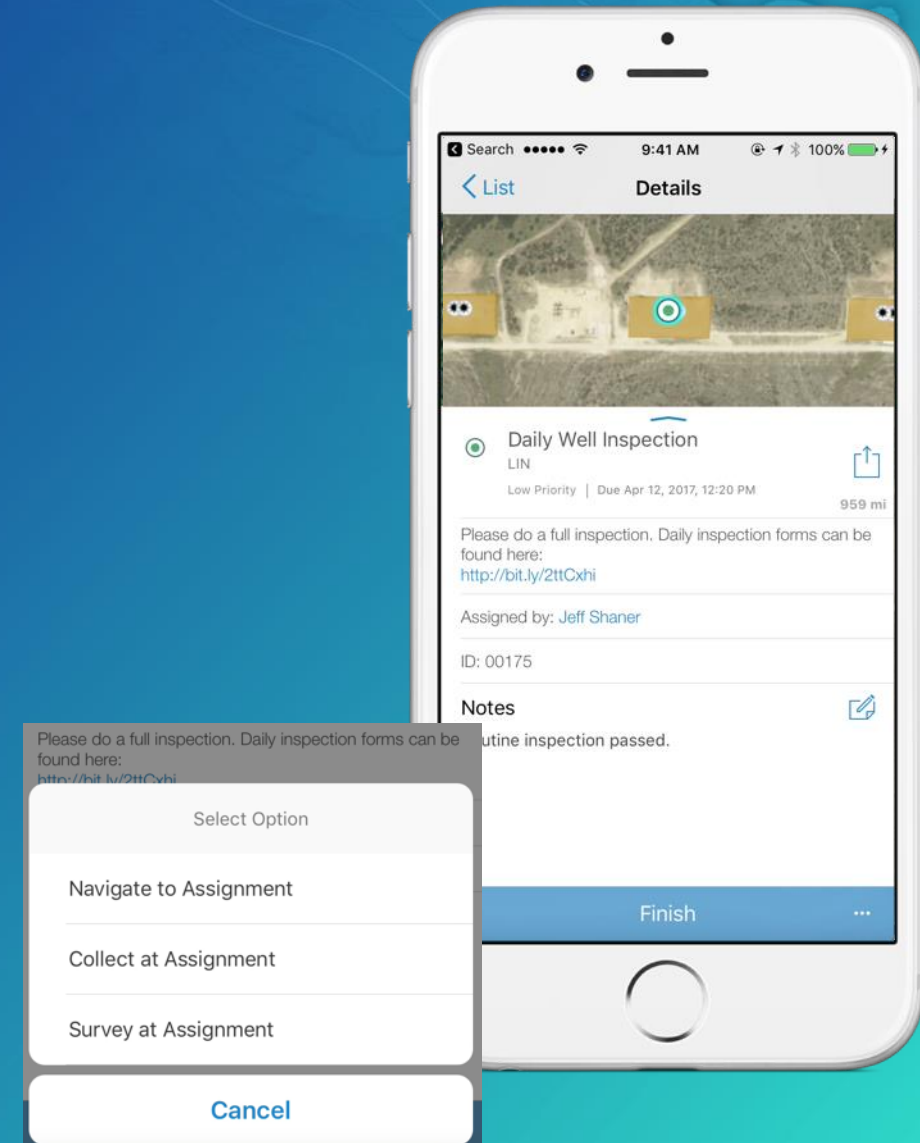
- None, Low, Medium, High, Critical*

- **Attachments**

- Documents, Pictures

- **Integration by Type**

- Navigator
- Collector
- Survey123



Workforce for ArcGIS | Mobile Workers

- **Location**

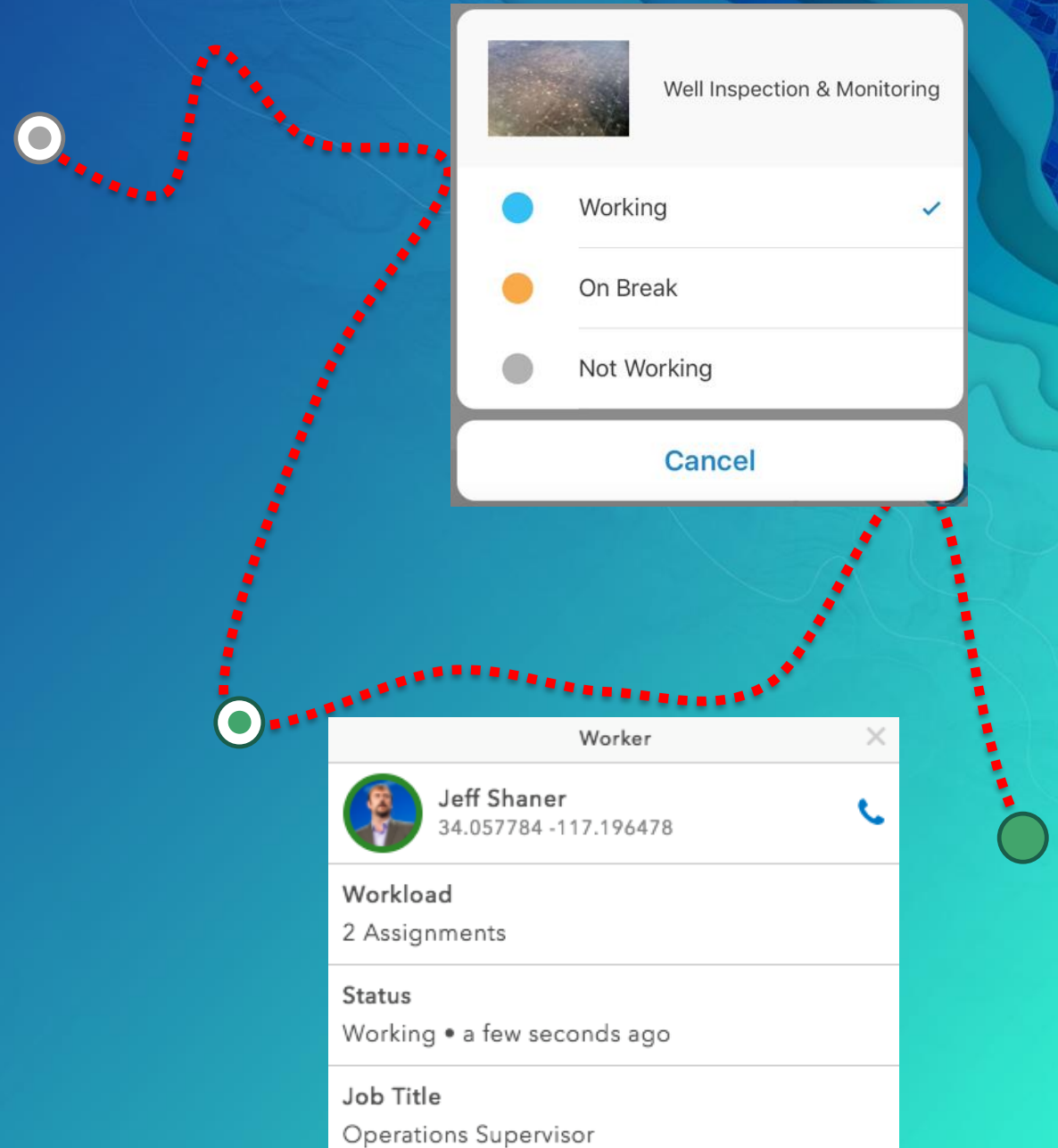
- Current Location, Location Tracks

- **Status**

- Working, On Break, Not Working

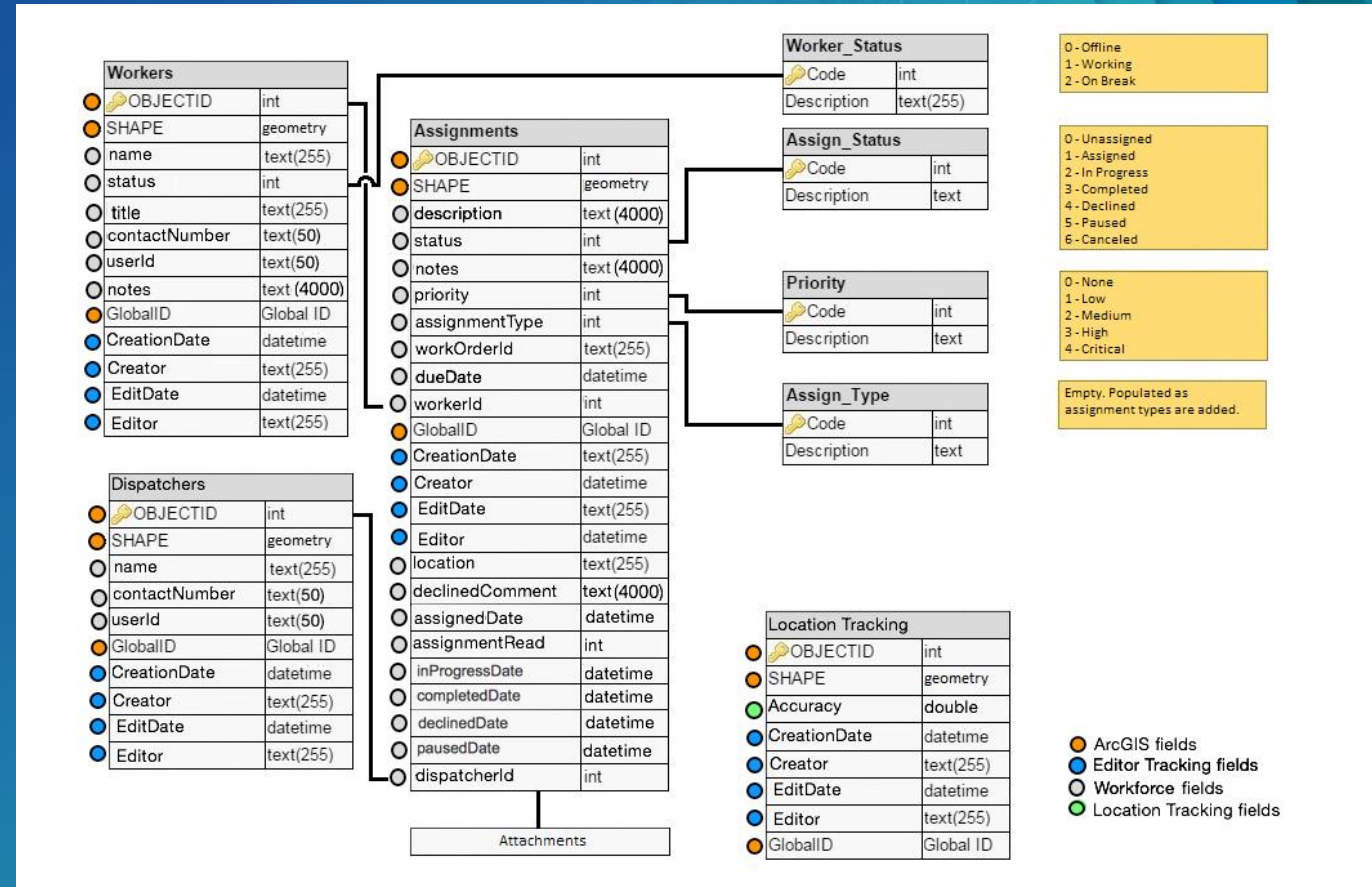
- **Details**

- Contact Number, Title, Notes



Workforce for ArcGIS | Workforce Project

- Workforce Project Item
- Maps
 - Dispatcher Web Map
 - Mobile Web Map
- Layers
 - Dispatchers
 - Workers
 - Assignments
 - Location Tracking
- Project Group
- Project Folder



Workforce | Opportunities

- **Small organizations**

- A location solution to replace paper-based workflows
- Works seamlessly with ArcGIS apps for the field

- **Mid-to-large size organizations**

- Complement work management systems
- Partner opportunities
 - System Integrators
 - Customized solutions



Demo

Road Map

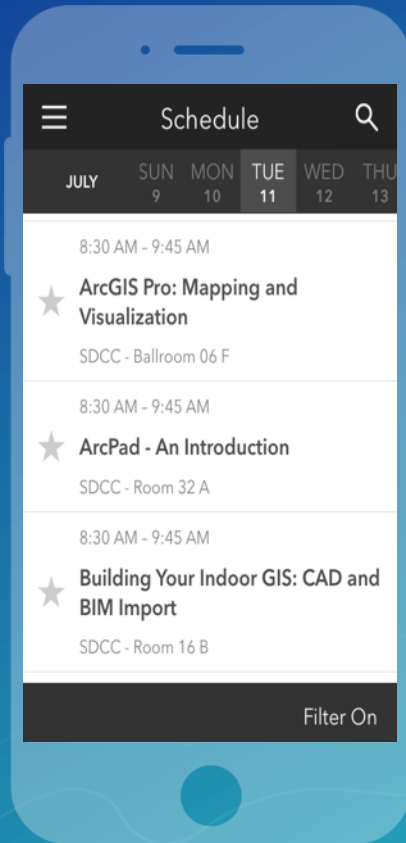
- Next Minor Release (Planned for shortly after UC)
 - Support for ArcGIS Enterprise 10.5.1
 - Attaching media to assignments in the field
 - Exchange work information (work ids) to Survey123 and Collector
- Next Major Release (*Q4)
 - Location Tracking improvements
 - Offline support

Please Take Our Survey on the Esri Events App!

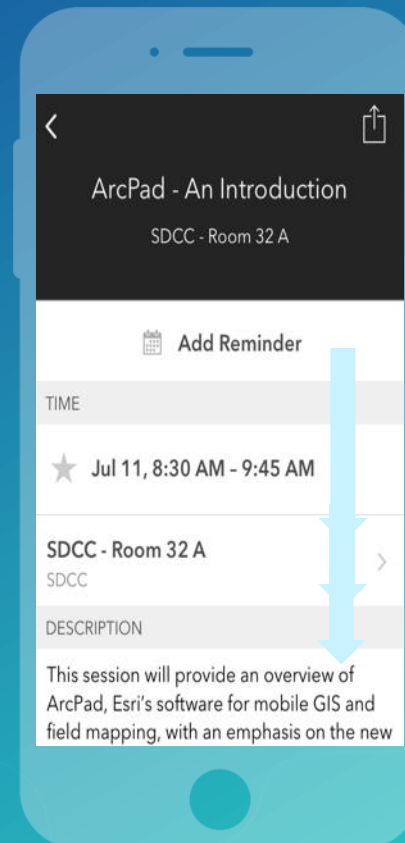
Download the Esri Events app and find your event



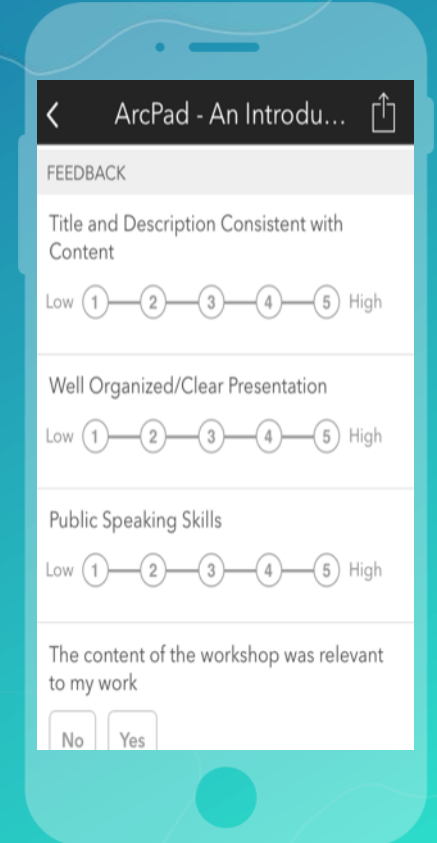
Select the session you attended



Scroll down to find the survey



Complete Answers and Select "Submit"





esri

THE
SCIENCE
OF
WHERE