

UC



Imagery Analysis and Use in Desktop

Kevin J Butler & Sangeet Mathew

Imagery is Core to GIS



Top Features for Imagery in ArcGIS Pro

- **Image Management**
- **Ortho mapping**
- **Georeferencing**
- **Raster Functions**
- **Image Classification**

Imagery Tab

PROJECT MAP INSERT ANALYSIS VIEW EDIT **IMAGERY** SHARE APPEARANCE DATA

New Workspace ▾
Ortho Mapping

Georeference
Alignment

Raster Functions
Analysis

Function Editor
Analysis

Classification Wizard
Image Classification

Classification Tools ▾
Image Classification

Process

Indices ▾

All ▾

Vegetation and Soils

NDVI SAVI TSAVI MSAVI

PVI VARI

Water

NDSI MNDWI NDMI

Geology

Iron Oxide Ferrous Minerals Clay Minerals

Landscape

NDBI NBR BAI

- Ortho mapping (v1.4)
- Georeferencing (v1.4)
- Access to the Raster Functions Pane & Function Editor
- Image Classification (v1.3)
- Processing Tools (v1.4)

Raster Analysis

Raster Functions +Function Editor

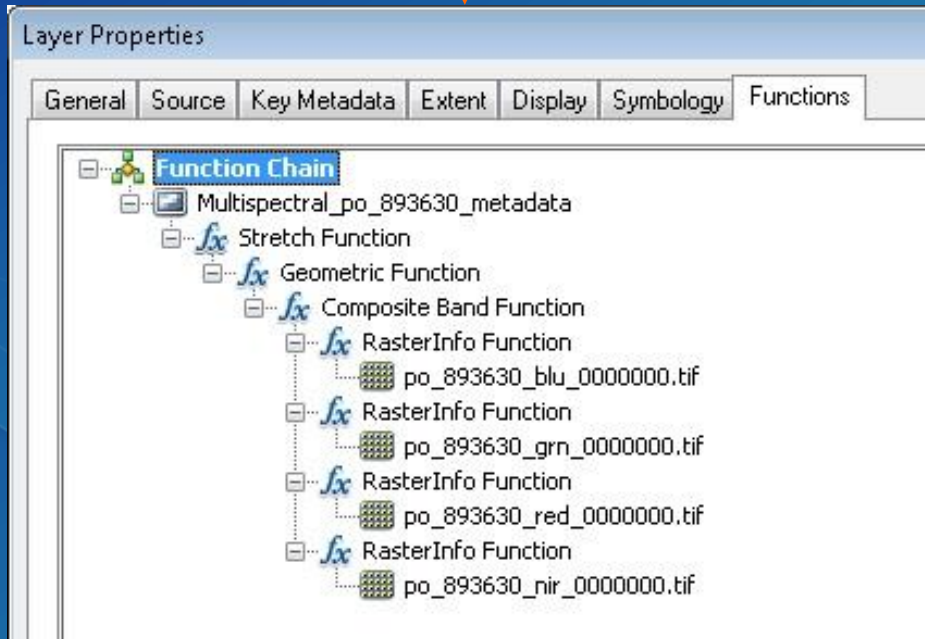
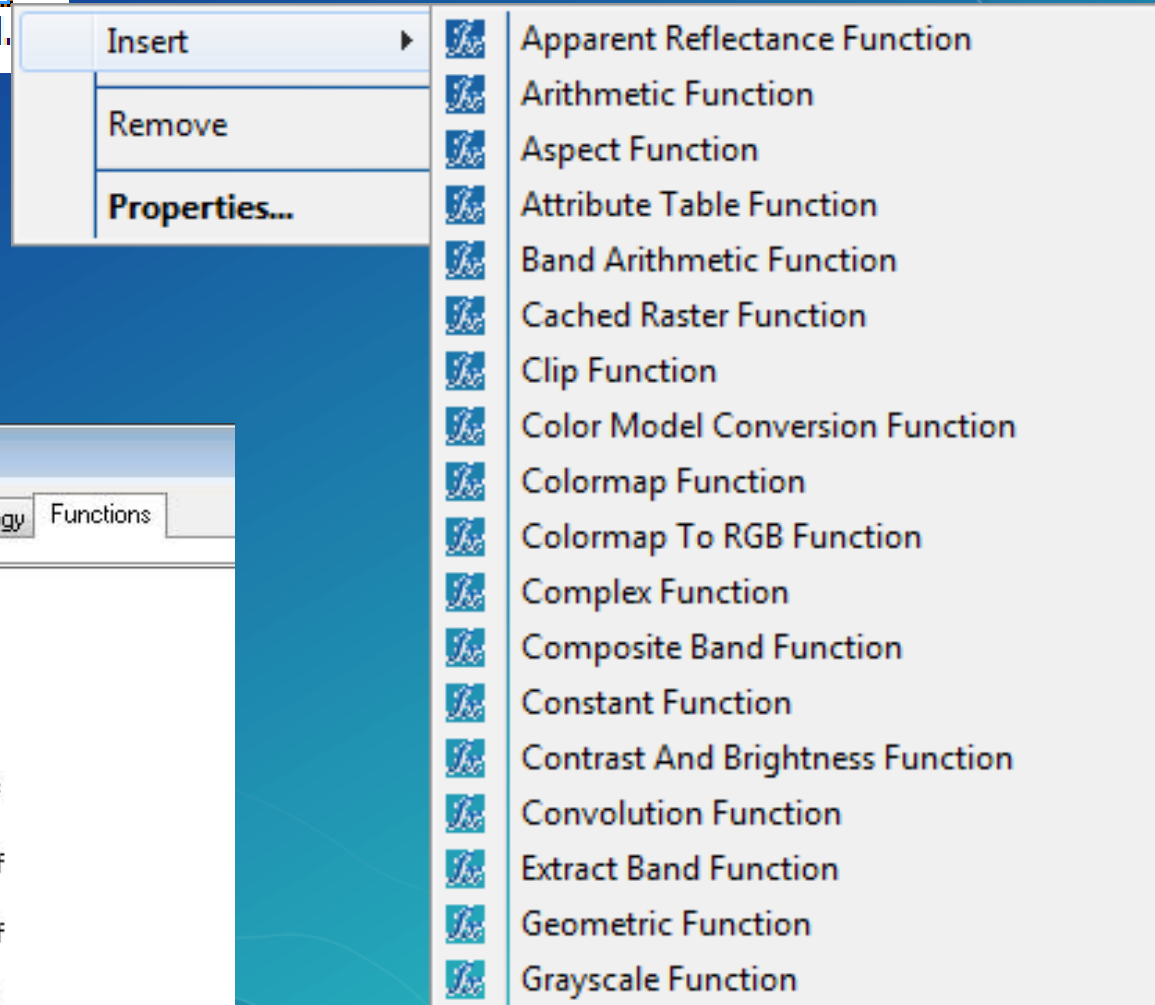
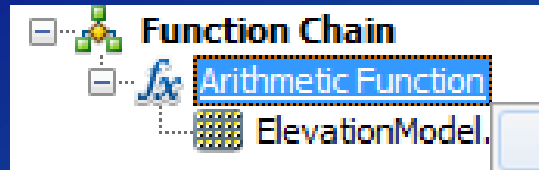


Raster Functions

- On the fly processing
- Output not written to disk
- Easy to use



Raster Functions in ArcMap



Raster Functions in ArcGIS Pro

Raster Functions

HabitatSuitablty Properties

General | **Parameters**

▼ Hillshade

Azimuth1
315

Altitude1
45

SlopeType2
None

ZFactor
1

Create new layer Cancel

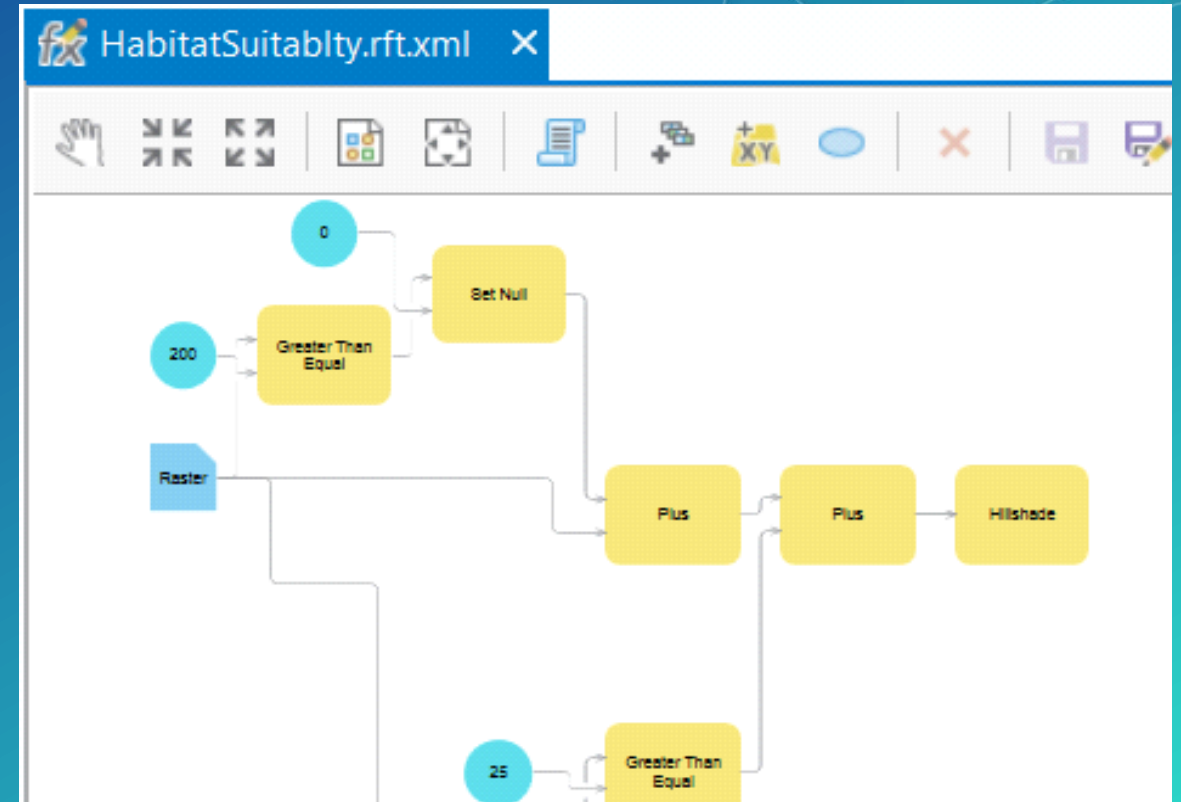
Raster Functions Project

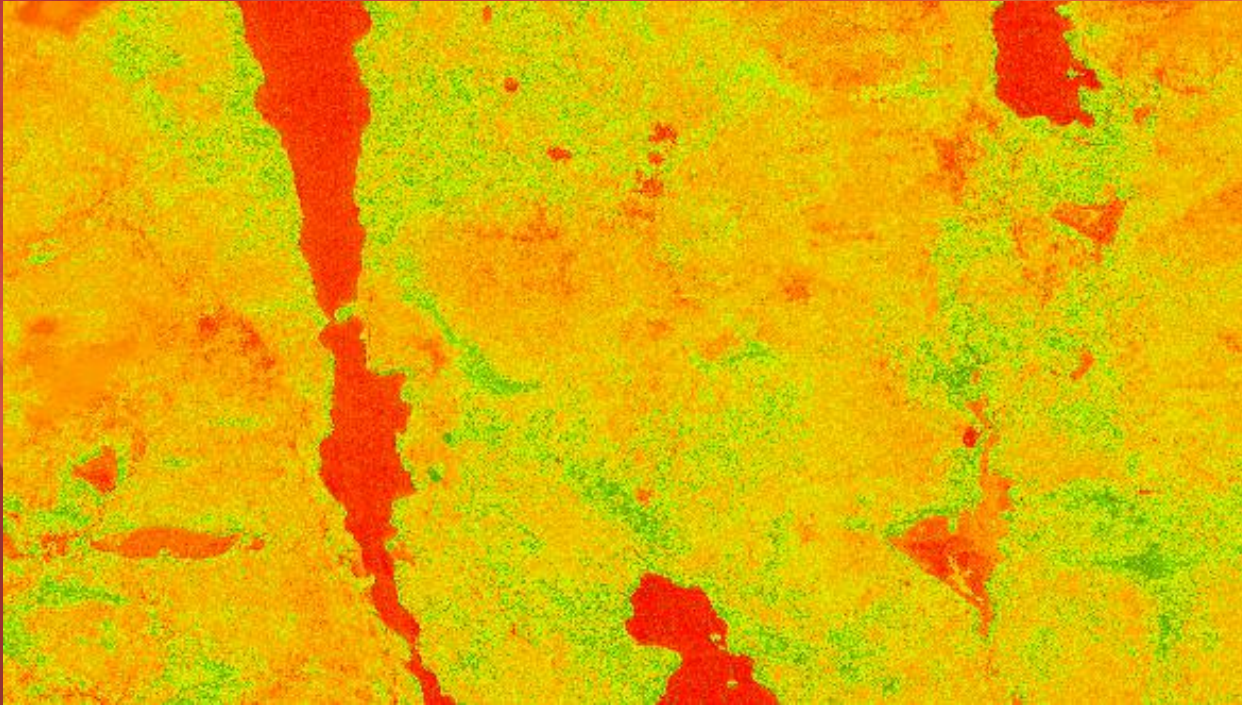
Hillshade Properties

General | Parameters: **Variables**

Parameter	Name	IsPublic	IsDataset
DEM	Raster Funct	<input type="checkbox"/>	<input type="checkbox"/>
Azimuth	Azimuth1	<input checked="" type="checkbox"/>	<input type="checkbox"/>
Altitude	Altitude1	<input checked="" type="checkbox"/>	<input type="checkbox"/>
SlopeType	SlopeType2	<input checked="" type="checkbox"/>	<input type="checkbox"/>
ZFactor	ZFactor	<input type="checkbox"/>	<input type="checkbox"/>
PSPower	PSPower_20	<input type="checkbox"/>	<input type="checkbox"/>
PSZFactor	PSZFactor_20	<input type="checkbox"/>	<input type="checkbox"/>
RemoveEdge	RemoveEdge	<input type="checkbox"/>	<input type="checkbox"/>

OK Cancel

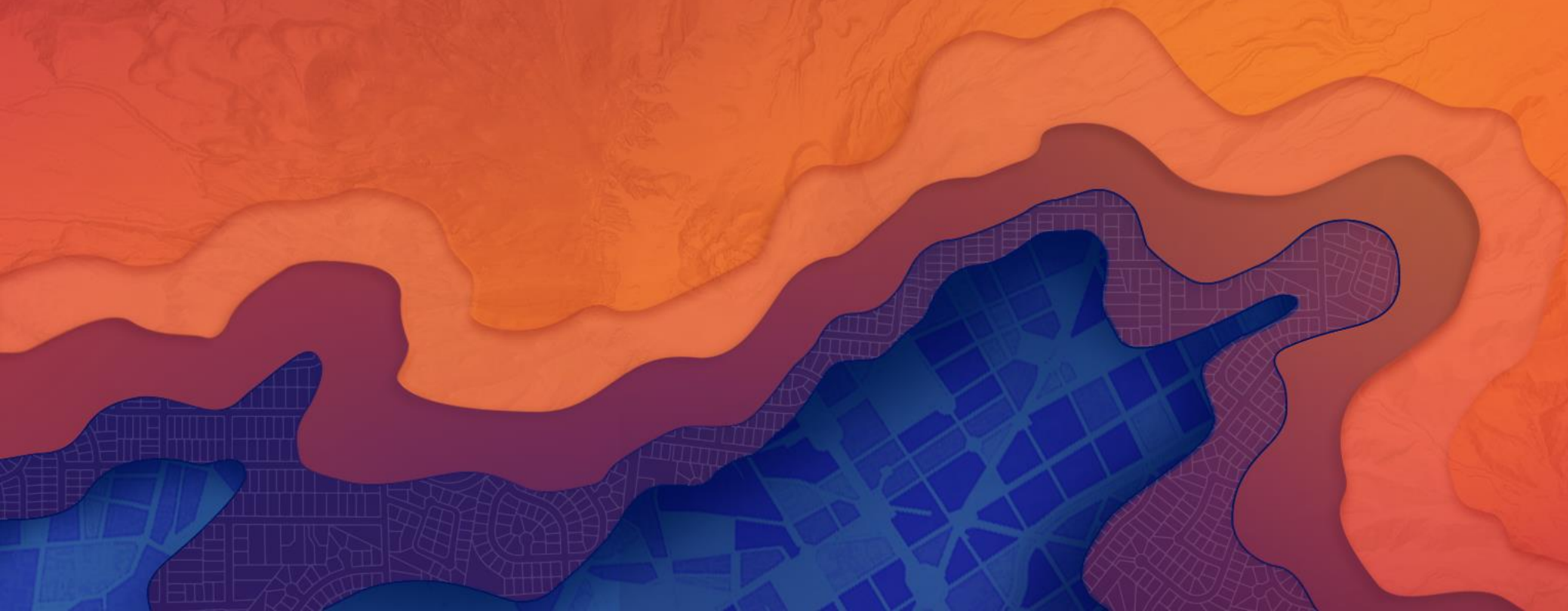




Raster Analysis

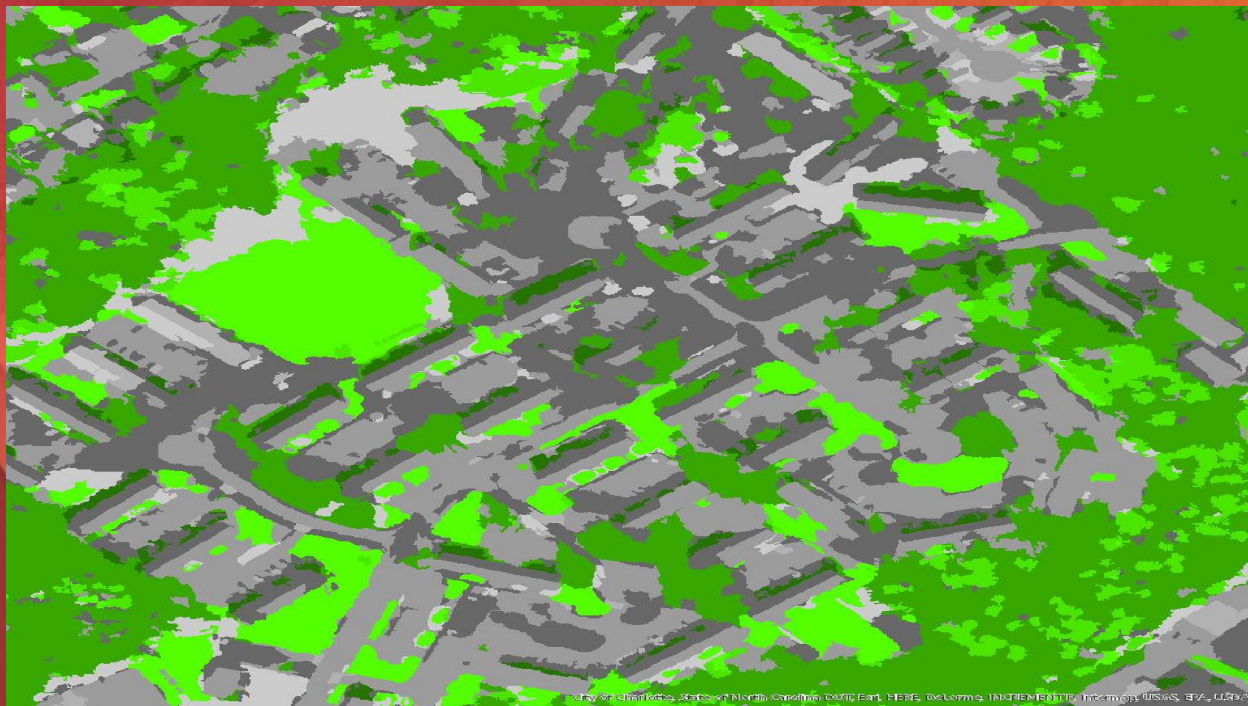
Demo

Image Classification



Headline Here

Headline Here



Classification

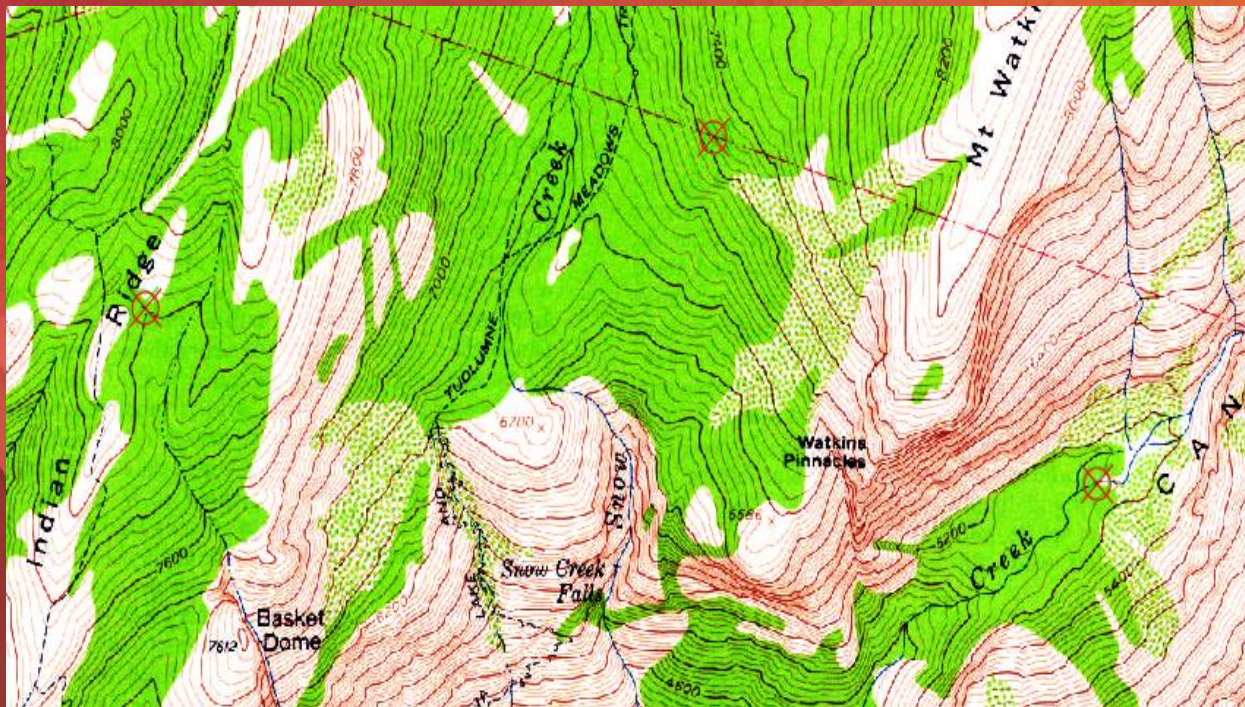
Demo

Image Georeferencing



Image Georeferencing

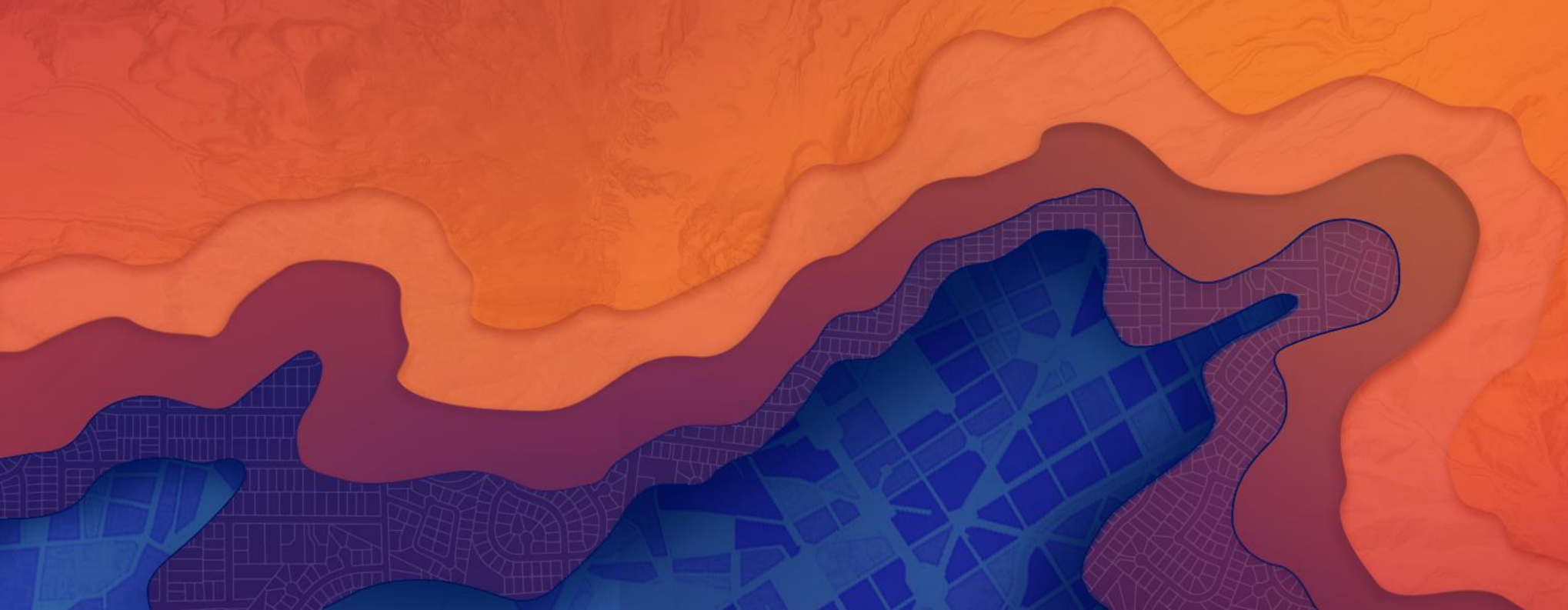
- Most requested feature in terms of equivalency
- Raster Data Sources - Satellite Imagery, Aerial cameras, Scanned maps
- Move from Toolbar experience to a more workflow driven experience



Georeferencing

Demo

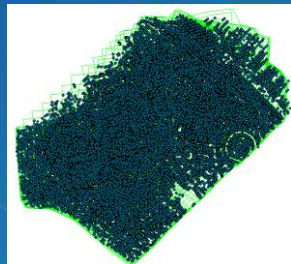
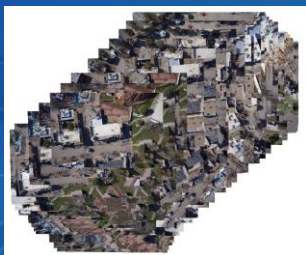
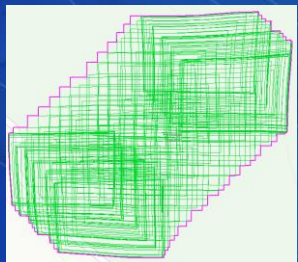
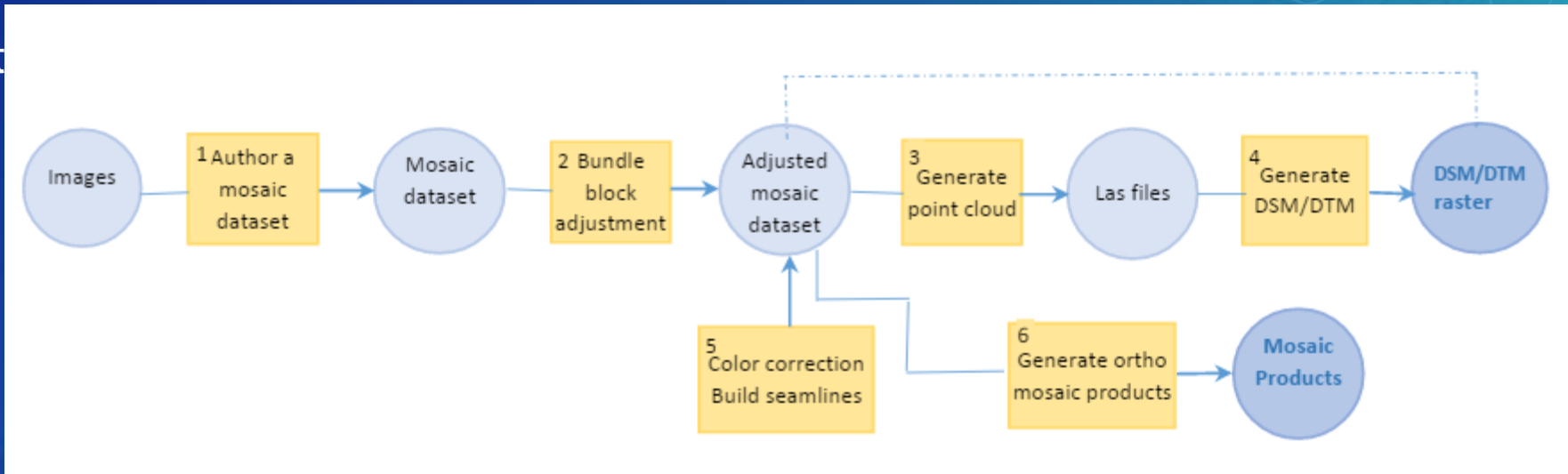
OrthoMapping



OrthoMapping

Subhead Here

- Bullet



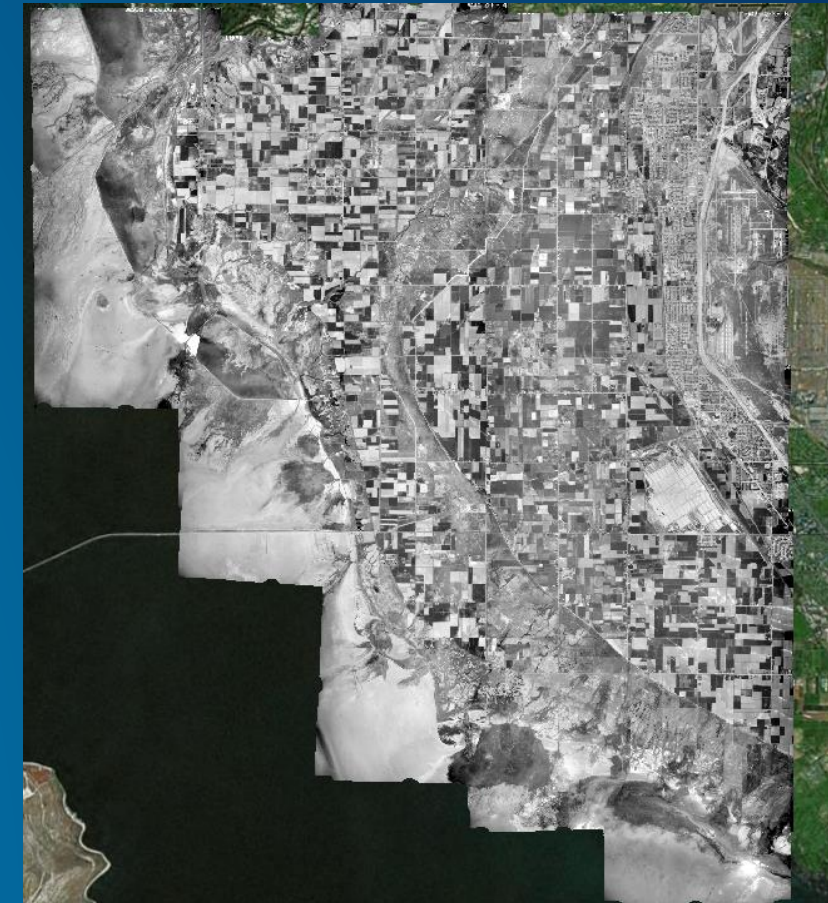
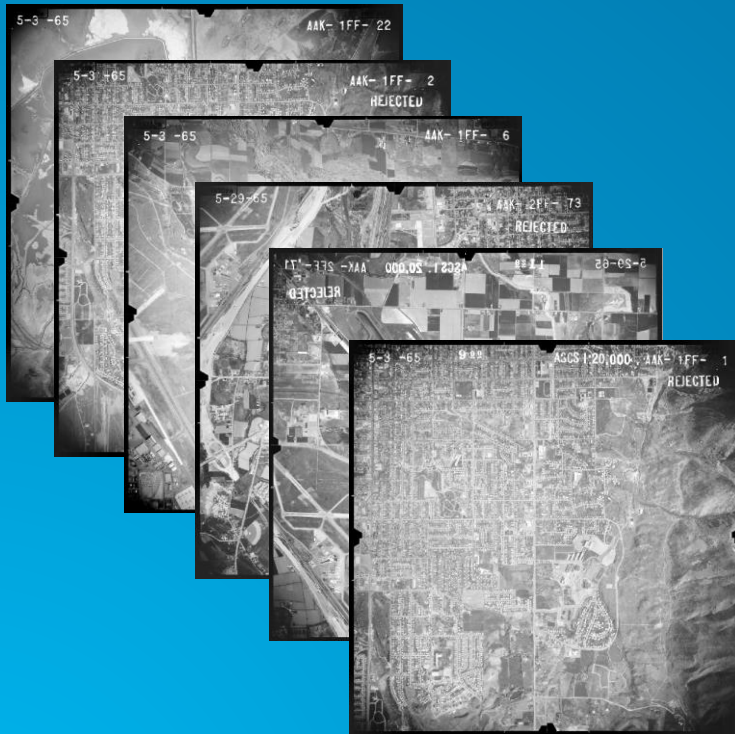
Headline Here

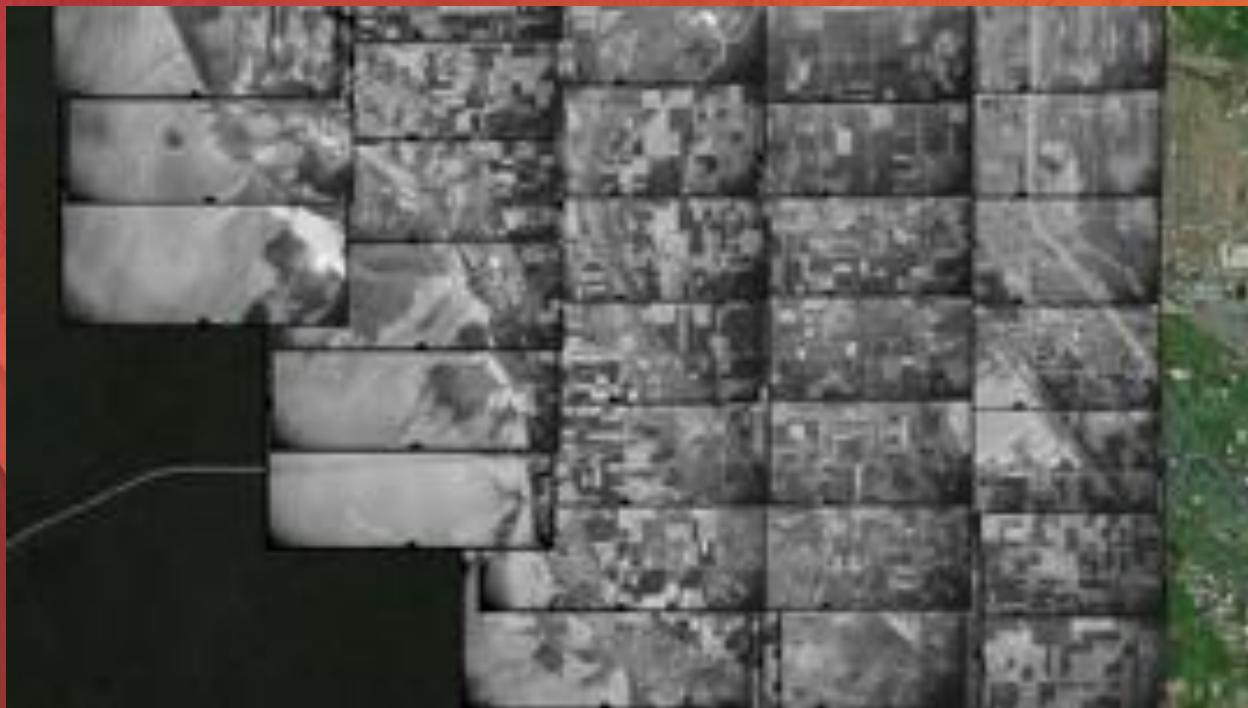
Text goes here



Scanned Aerial Photos - Historical Map

- David, 44 photos of year 1965
- 13 GCPs manually added (NAIP as reference)
- RMS: 1.7





OrthoMapping

Demo

Road Ahead

Stereo

Motion Imagery

Image Mensuration





esri

THE
SCIENCE
OF
WHERE

Please Take Our Survey on the Esri Events App!

Download the Esri Events app and find your event



Select the session you attended



Scroll down to find the survey



Complete Answers and Select "Submit"





Header for Demo Slide

Supporting Text

Which Font is Best For Your Presentation?

Avenir Next

If you are the sole presenter and **will not distribute your PowerPoint presentation to others outside of Esri** and will only be using your own Esri computer for presenting, please use the new font Avenir Next LT Pro.

See instructions on the following slide to see how to use this new font.



Use Avenir Next if ...

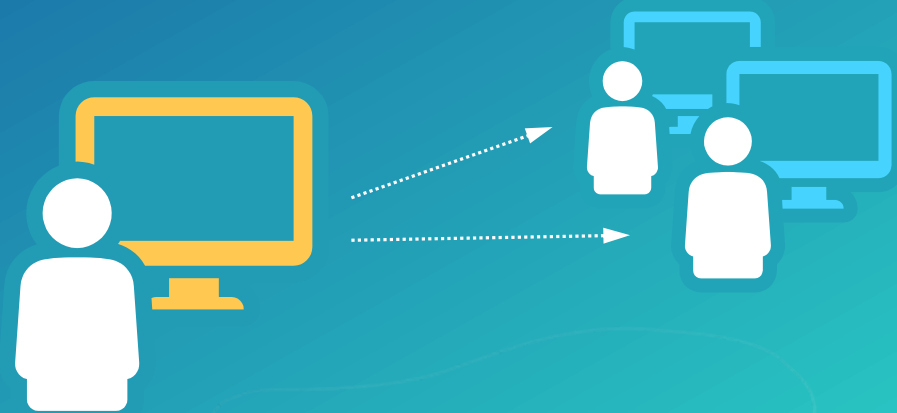
Sole Presenter

Single computer used for presentation

Arial

If you will be distributing your PowerPoint presentation to **others outside of Esri**, or using various computers to present please use Arial.

Using Arial gives your PowerPoint presentation the flexibility to be used by many people on various machines without the risk of font compatibility and changing the look of your layout.



Use Arial if...

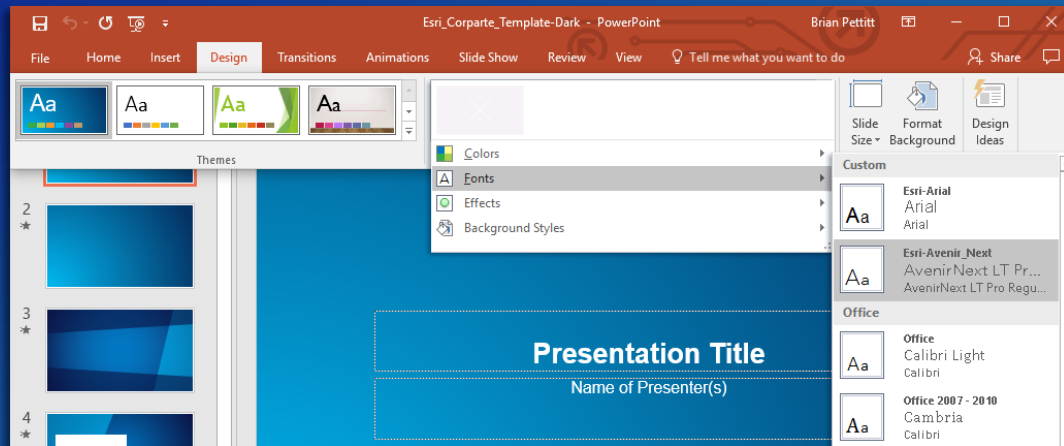
Multiple Users / Presentation Distributed to others

Presentation used on multiple computers

How to Change Your Theme Fonts to Avenir Next

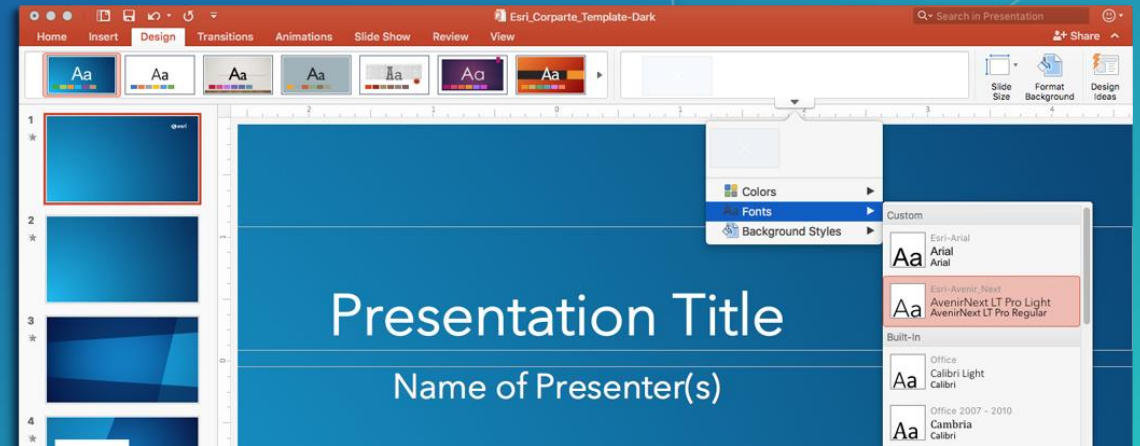
Windows

Select: Design
Variants (arrow)
Fonts > Esri-Avenir Next

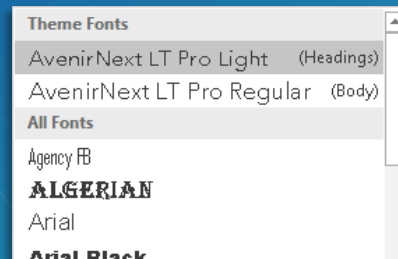


Mac

Select: Design
Variants (arrow)
Fonts > Esri-Avenir Next



What if my
fonts don't
change?



*If the text boxes on your slides are not using
(Heading) or (Body) fonts from the Theme Fonts
section, they will not update correctly.
You will have to replace them manually.*

How to Test if you're using Avenir Next

If you have Avenir Next installed, the two Qs will match.



Picture



Live Text

Did you know?

To quickly update any current presentation

Copy and paste your slides from your **current** deck into the **newest** template. The title and ending logo slide will update automatically.


For More Templates, Sample Files, and Icons See

<https://compass.esri.com/resources/presentations/Pages/Main.aspx>

Videos not working?

For video in PowerPoint, animated GIF is recommended. AVI and WMV (native PC files) will work best on a PC platform. H.264 MP4 will work only on PowerPoint 2013 and later.

Aspect Ratio Test



If this shape does not appear as
a perfect circle, adjust the aspect
ratio of your display until it does.

Try the resolution 1920x1080 for
16:9 displays.