

FMV Support in ArcGIS

Gerry Kinn

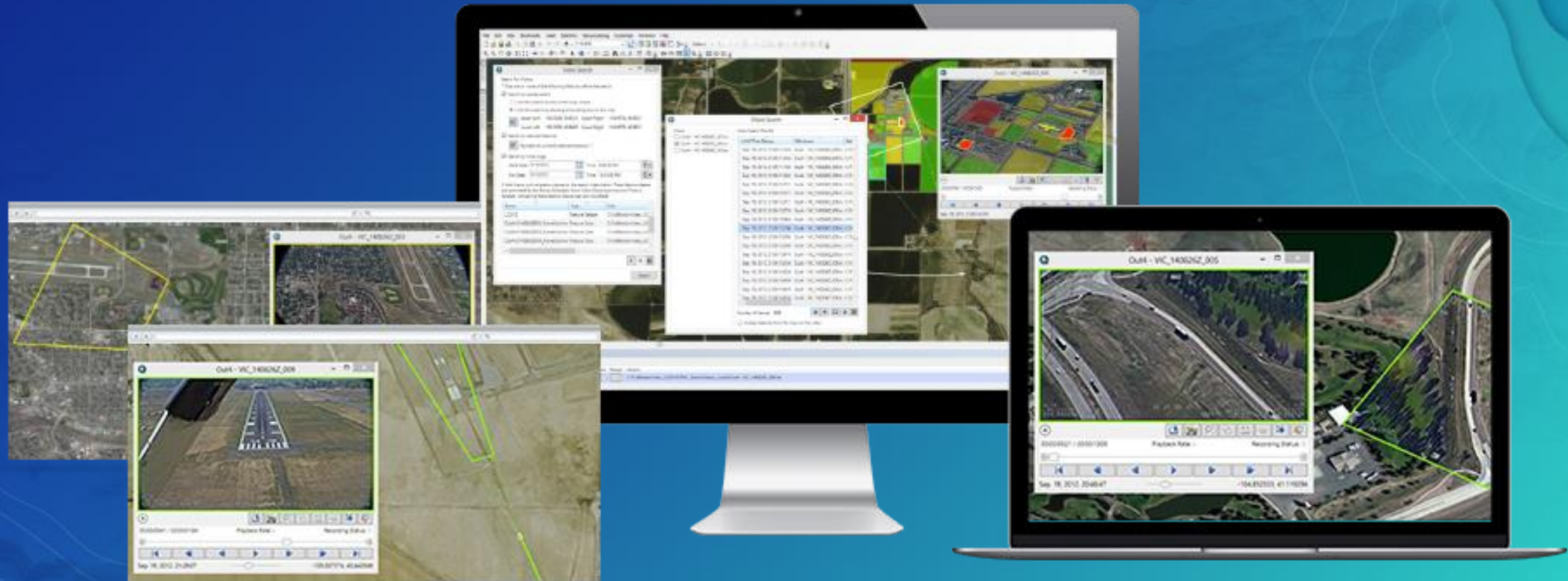
FMV extension design

- Down looking overhead video
- An integrated video-GIS experience
 - Shared situational displays
 - Indexed datasets - space, time, attribute
- MISB compliant data
- Non-MISB data, with multiplexor



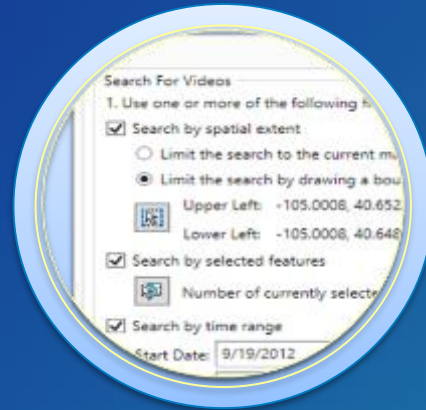
Esri Full Motion Video

Easily view and analyze full motion video data from drones, unmanned aerial platforms, and video cameras within your ArcGIS environment

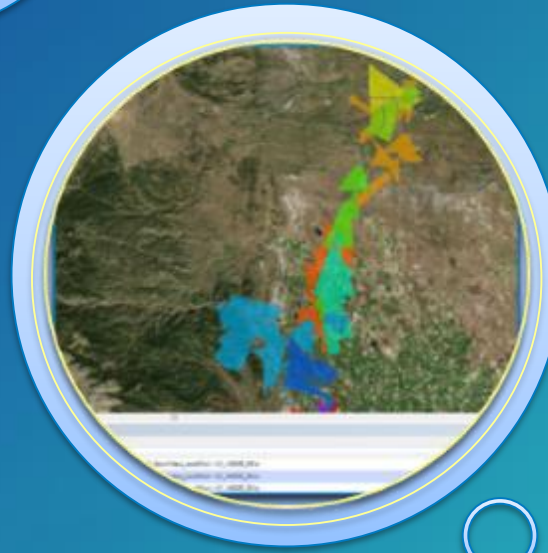


Seamlessly Interact Between Video and Map

Videos Integrated with ArcGIS



Quickly Find, View, and Analyze Videos



Share Videos and Analysis Results

Enable Smarter Decisions
with Actionable Intelligence

View and Access Videos from Drones and Other Collection Platforms



Terrestrial
Fixed
Cameras



Aerial,
Helicopters,
Fixed Wing,
Persistent
Surveillance

Drones
(UAS,UAV)

Handheld
Devices



Satellites



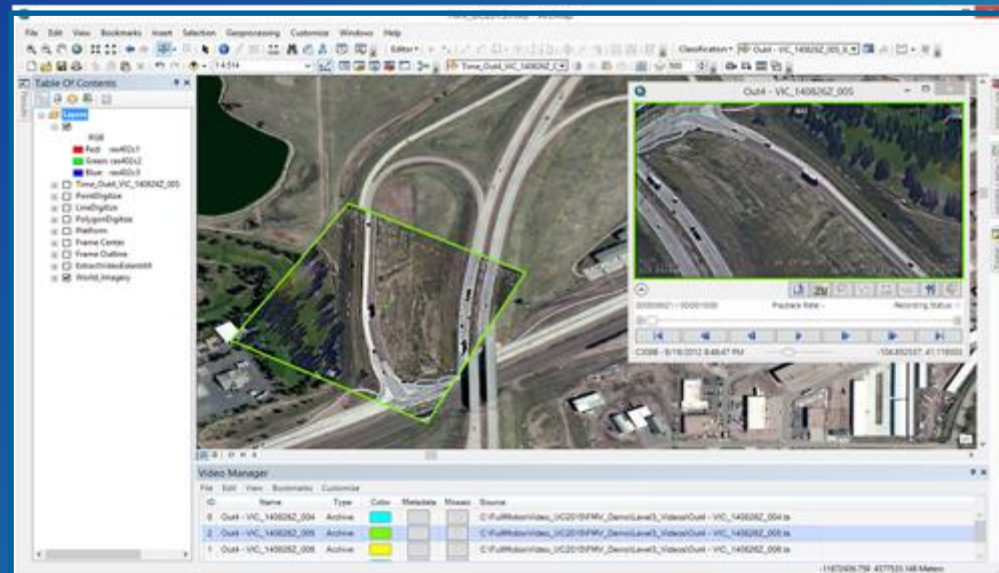
Display Full Motion Video to Make Timely Decisions

Overlay video frames on maps for situational awareness



Pan and zoom in the video for accurate visualization

Live Stream Viewing and Recording for real time information



The screenshot shows a Windows command prompt window with the title "cmd - Microsoft Windows". The command prompt shows the current directory as "C:\Users\Walter\Desktop" and the command "dir /x" has been executed. The output lists the file "108282626.wave" with its attributes, including "Date of last modification: 11/11/2010 19:50:00", "Date of last access: 11/11/2010 19:50:00", "Date of last write: 11/11/2010 19:50:00", "File size: 108282626 bytes", "Attributes: Normal file", "Permissions: RW", "Volume: C:", "File name: 108282626.wave", and "Full name: C:\Users\Walter\Desktop\108282626.wave".

View video metadata for complete scope of mission

Playback in slow motion for review



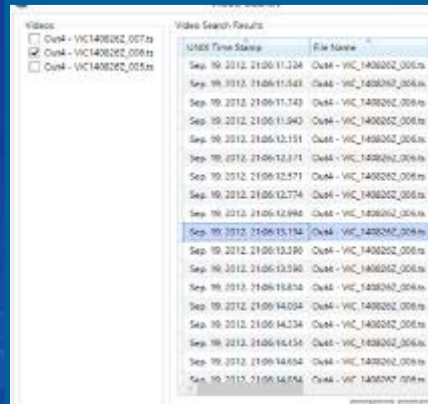
Analyze and Exploit Full Motion Video for Actionable Intelligence

Overlay features from your map on the video and annotate videos for complete geospatial analysis



Measure and track locations on your video in the map, and from the map to your video

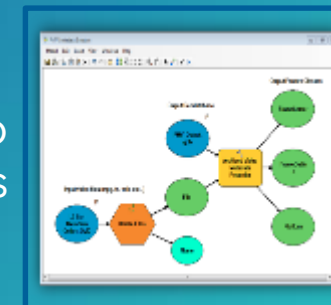
Search video archives for full analysis options



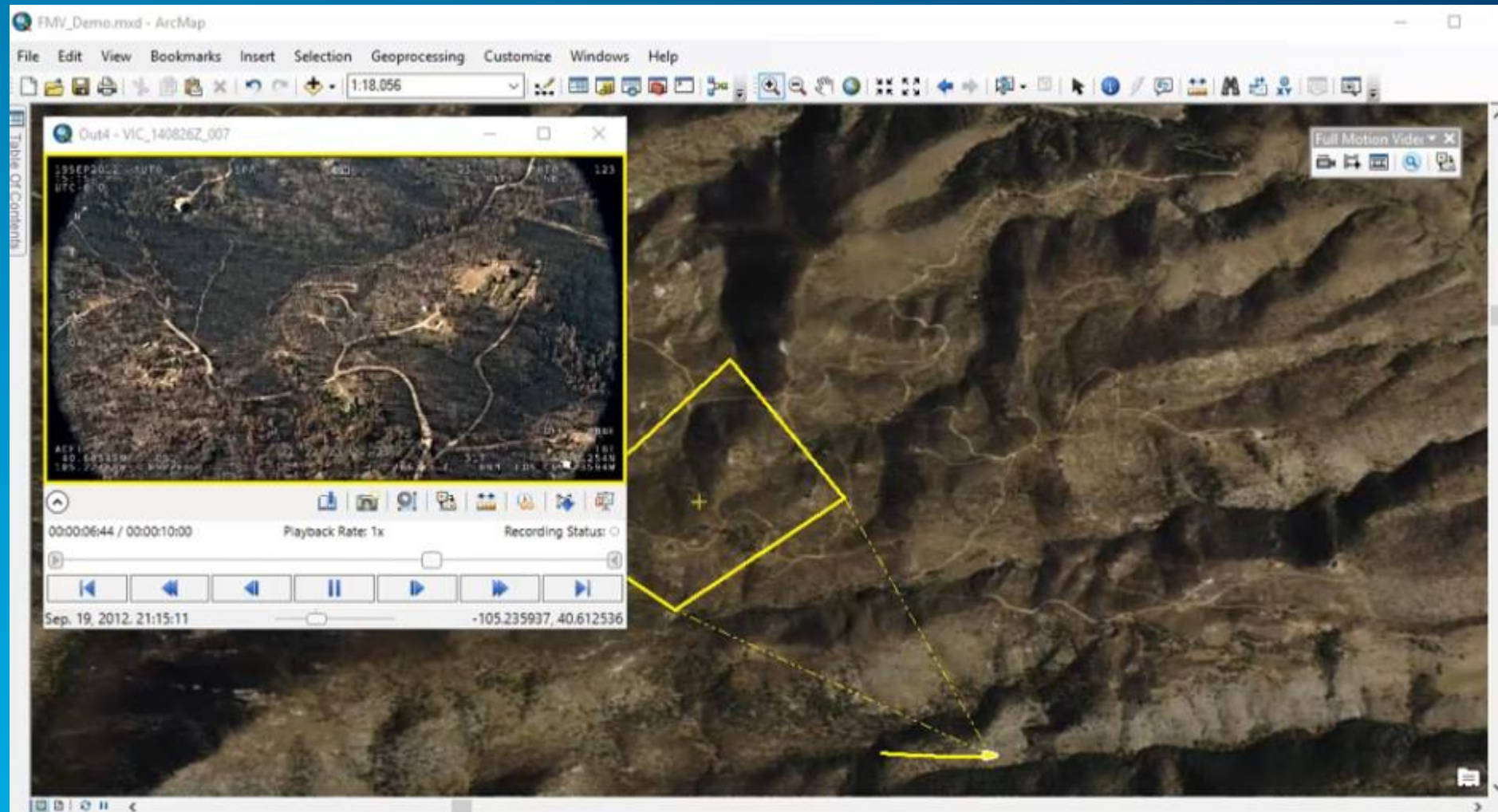
Video Manager		
File Edit View Bookmarks Search Customize		
ID	Name	Type
0	Out4 - VIC_1408262_005	Archive
1	http://206.196.156.57/mjpg/video.mjpg	Stream
2	http://212.170.22.153:8080/mjpg/video.mjpg	Stream

Bookmark videos to reference locations of interest

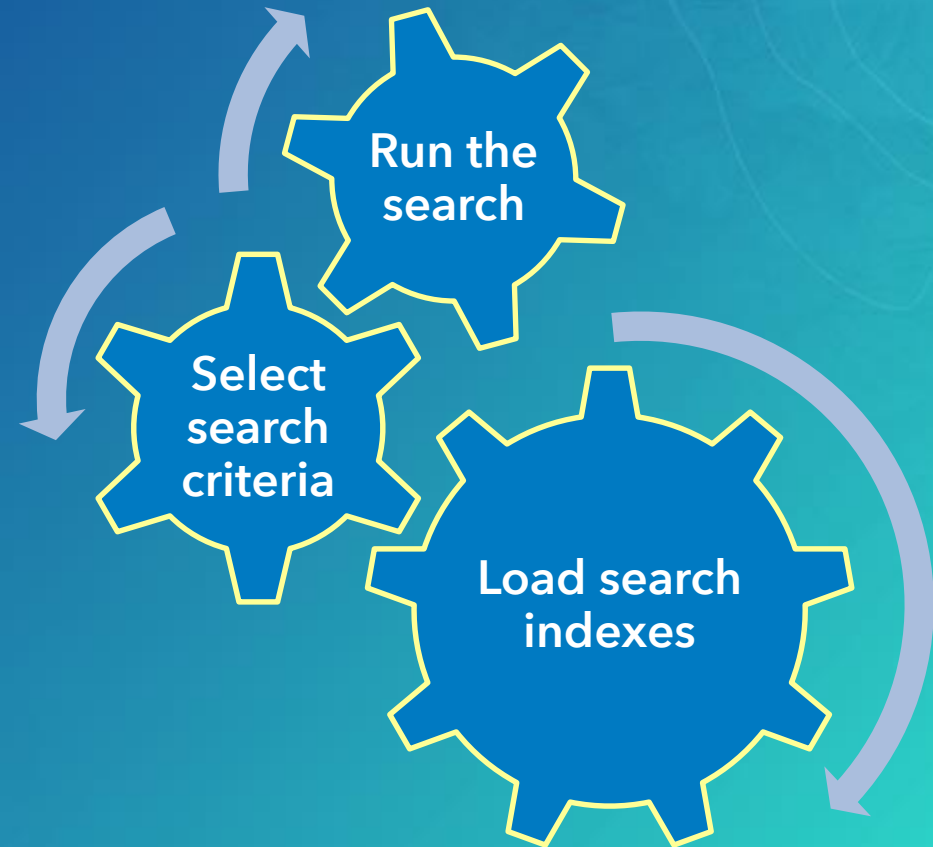
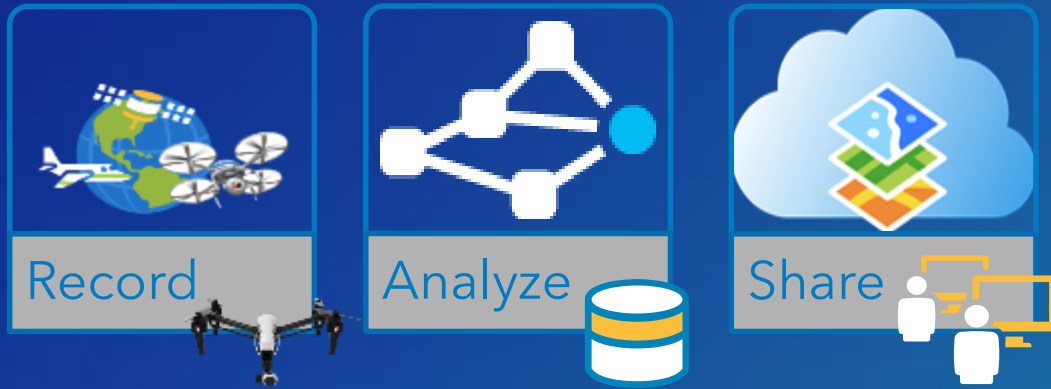
Add video information to models for multi-int analysis



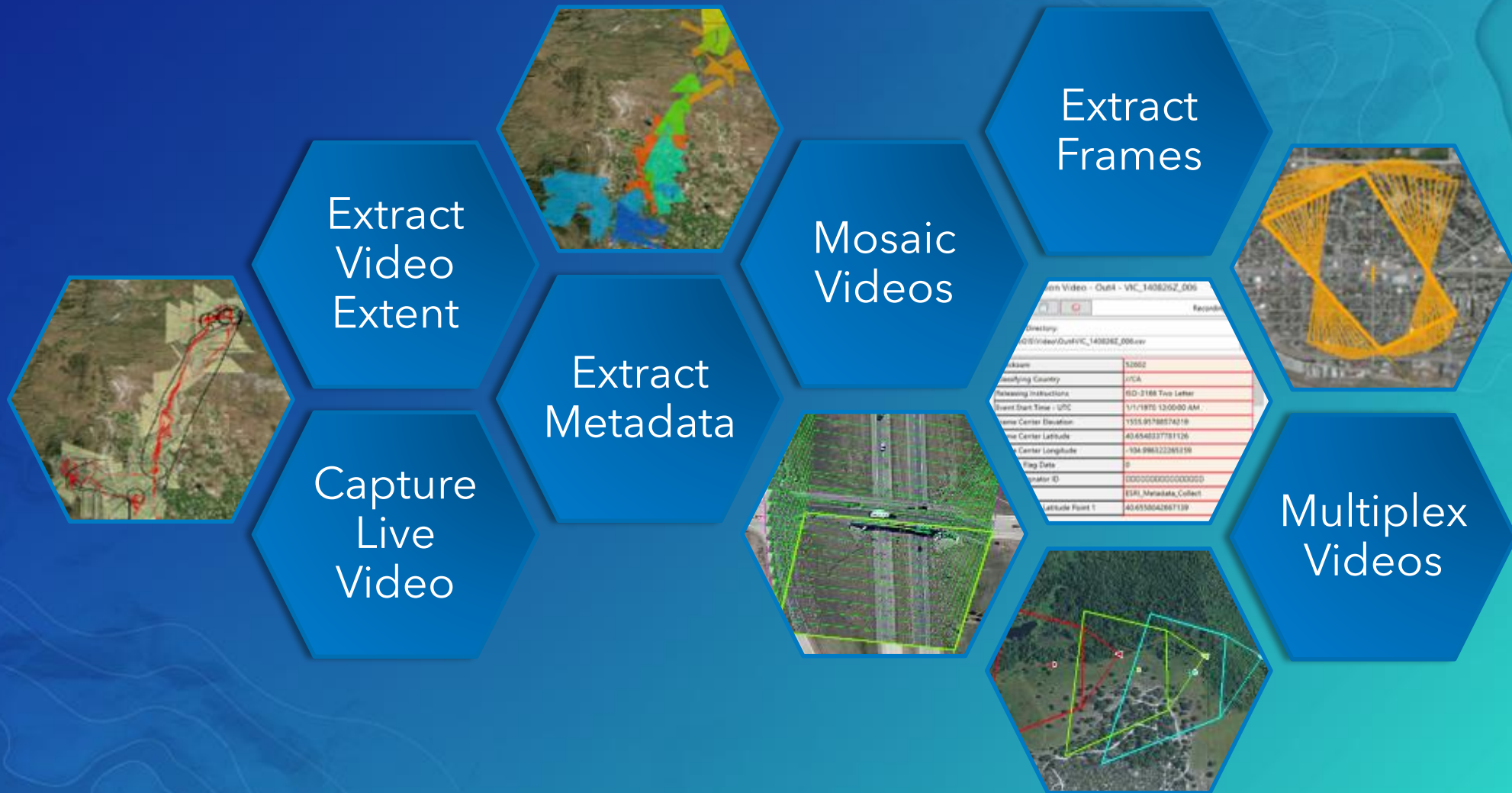
Dynamic video example



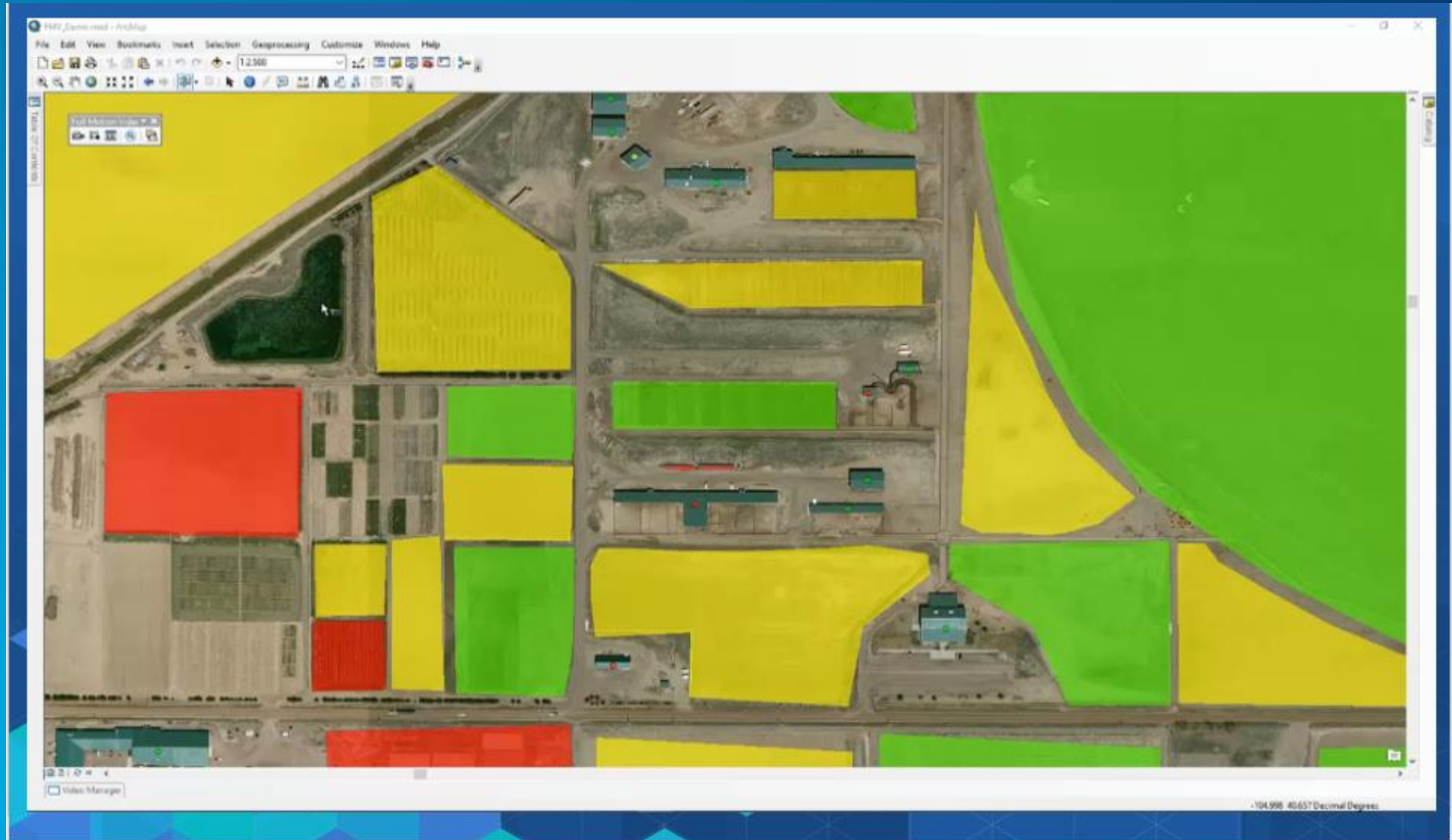
Search Your Videos for Rapid Discovery and Information



Automate Your Workflow with FMV Geoprocessing



Search Video



The Road Ahead for Full Motion Video (THIS TIME LINE IS NOT UPDATED)

FMV 1.3.2

- Improved Accuracy
- EXIF metadata support
- Enhanced playback performance

FMV Enterprise

- Video processing
- FMV as part of web GIS

Pro 2.1

2016

2017

Q2

2017 Q4

2017 Q4

2018

Pro FMV Product Development

- New Workflows
- Modern user experience
- 3D
- 64-bit and GPU enhancements

Pro 2.x

ArcGIS Pro FMV

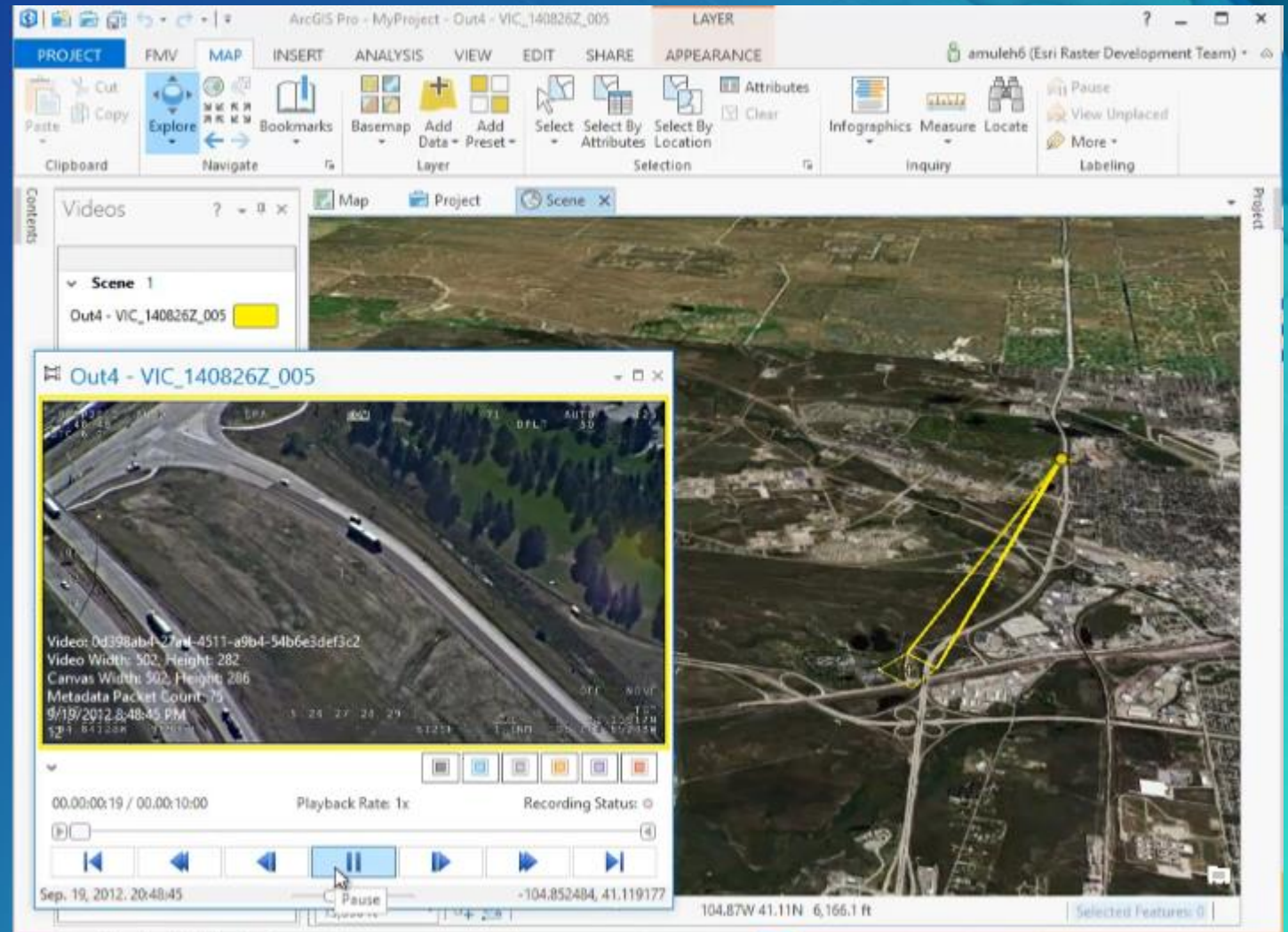
Coming 2017 Q4

New Workflows

Modern user experience

3D and Mensuration

64-bit and GPU enhancements



Full Motion Video Landing Page

Easy access to additional information...

- Order the FMV add-in and GP tools
- Customer service information
- Get tutorials and free data
- Presentations
- FAQ's
- Blogs
- GeoNet links <https://geonet.esri.com>
- And more!

www.esri.com/fmv

Order FMV Today!

ArcGIS FMV add-in is available free of charge to customers with ArcGIS for Desktop 10.0 or higher.

You can order the ArcGIS FMV add-in two ways - by calling Esri TeleBusiness or through the My Esri portal.

Get your license today to start visualizing and analyzing your videos in ArcGIS.

TeleBusiness

Place the order over the phone. Once the order is processed, you will receive an email that includes an authorization number to activate FMV and a link in your My Esri portal with a token that gives you download permission.

800-447-9778

(8:00 a.m. - 5:00 p.m. PT Monday - Friday)

My Esri

Log in to your My Esri portal and click on the Downloads tab under 'My Organizations'. Select the version of ArcGIS for Desktop that you currently own and click on the Download link. At the top of the page, in the 'Get Started' box will be a link to request the Full Motion Video License.

Go to my.esri.com

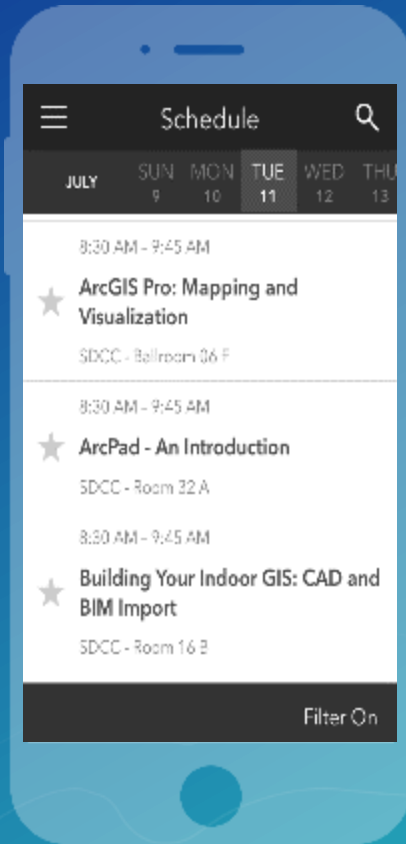
www.esri.com/fmv

Please Take Our Survey on the **Esri Events App**!

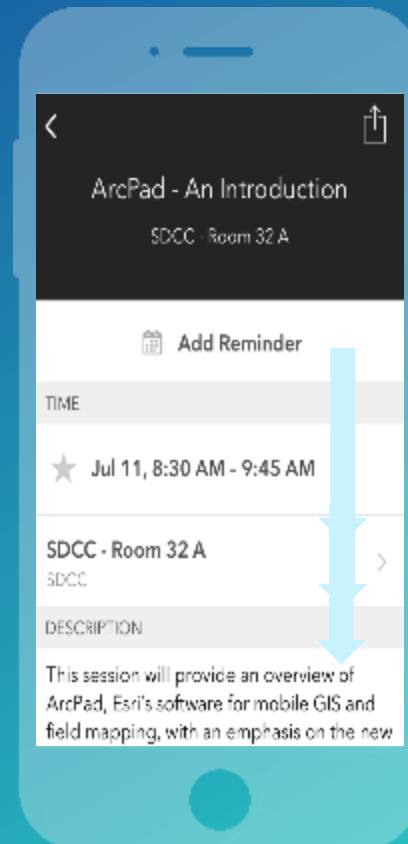
Download the Esri Events app and find your event



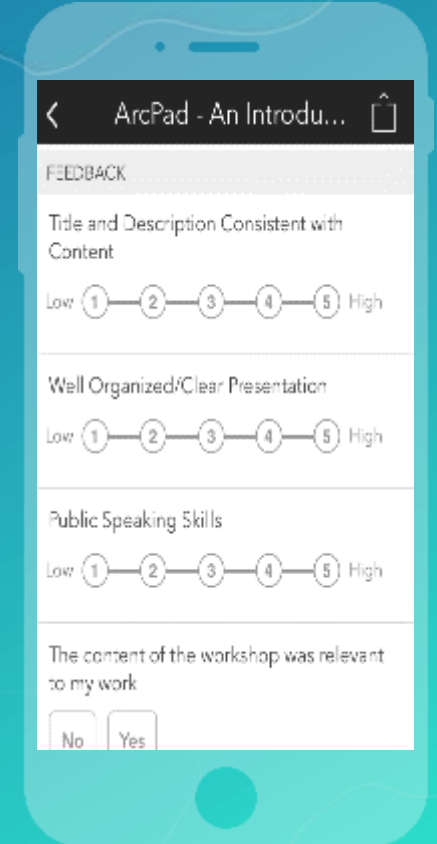
Select the session you attended



Scroll down to find the survey



Complete Answers and Select "Submit"





esri

THE
SCIENCE
OF
WHERE