

Raster Function Processing

Eric Rice

Raster Functions

ArcGIS Imagery Information Model

- The Raster Function is the primary information model component which processes raster data.
- It's role is to take input pixels and transform output pixels into meaningful products



Raster Functions

ArcGIS Imagery Information Model

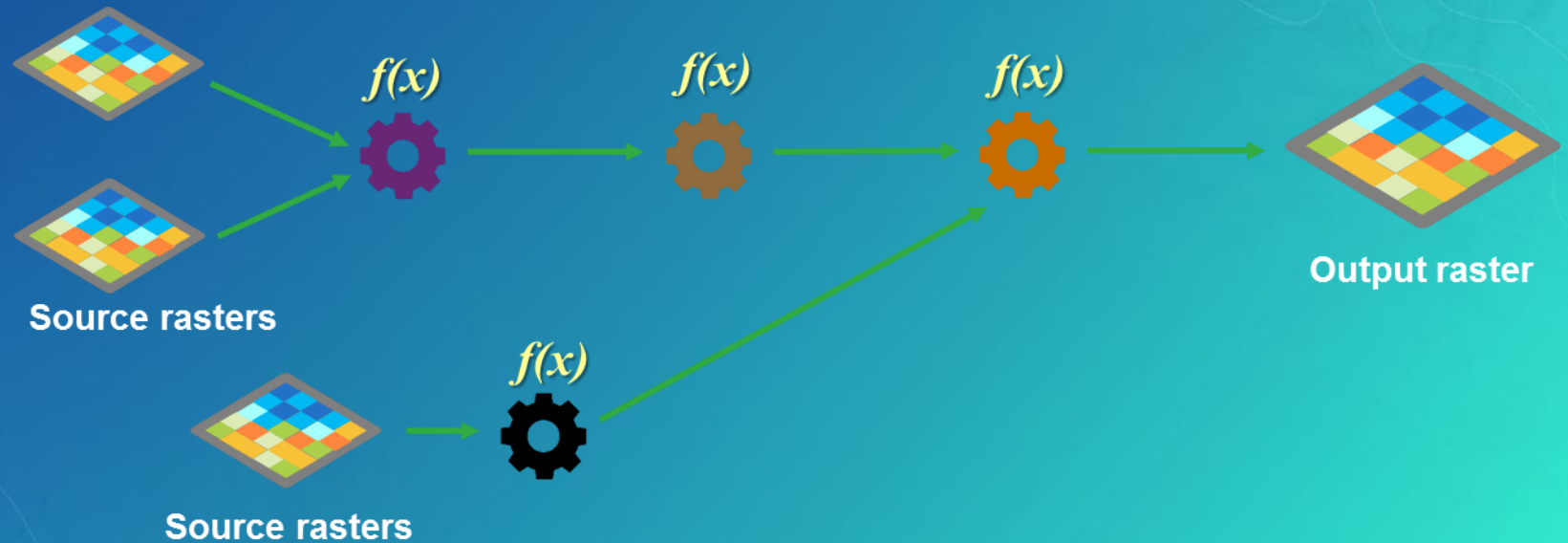
- **Raster Functions are chained together to create simple or advanced processing chains**
 - pixels that flow through the chain are virtual in nature ("on-the-fly" processing)

- **100+ Raster Functions**



- **Extensible :** <https://github.com/Esri/raster-functions>

- Build your own using Python

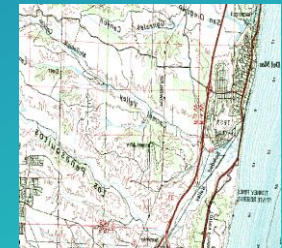


Raster Functions

ArcGIS Imagery Information Model

What are the advantages of using Raster Functions?

- Save space
 - No intermediary data
 - No redundant data
 - Source pixels are referenced
- Save time
 - Immediate results
 - No data written to disk
 - Easy to use



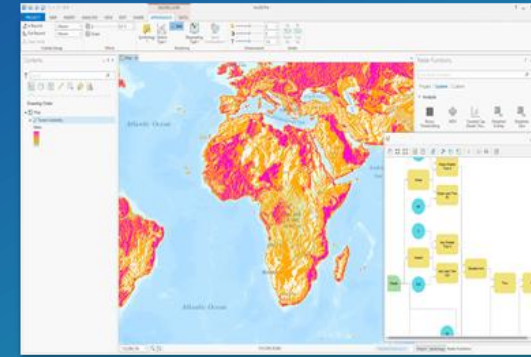
Raster Functions

ArcGIS Imagery Information Model

Where can I use Raster Functions?

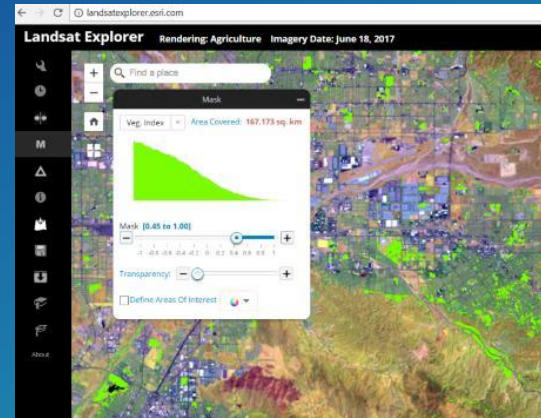
Client side on-the-fly processing

- ArcGIS Pro
- ArcMap



Server Side on-the-fly processing

- Image Services
- Websites



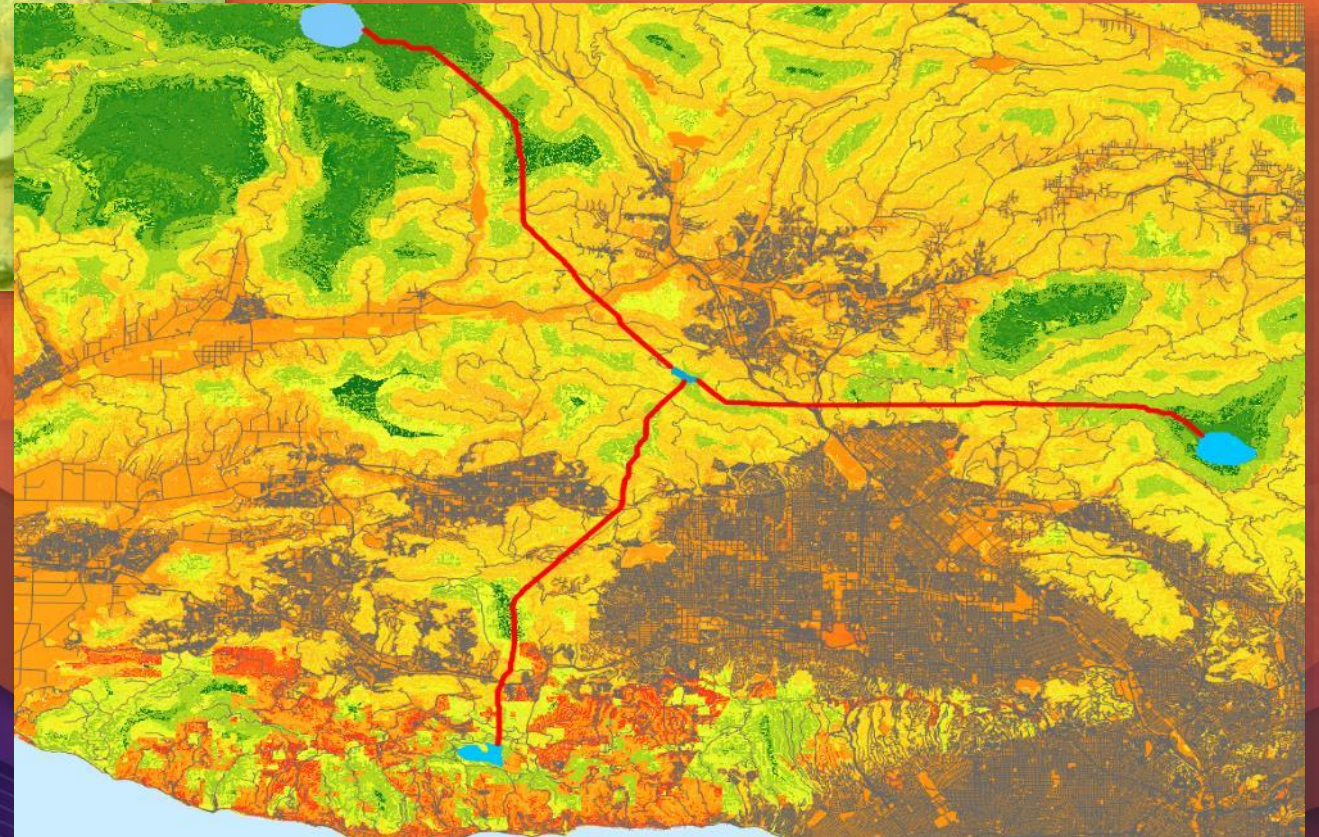
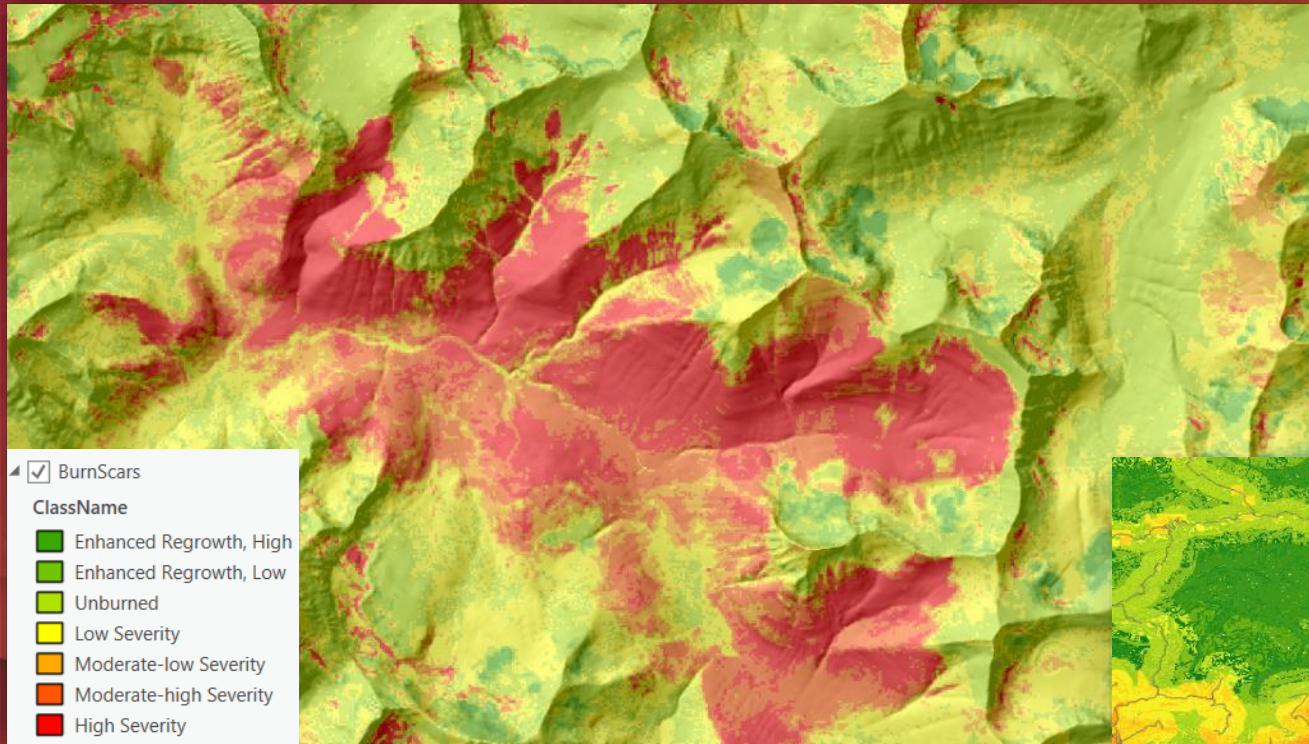
Server Side Distributed Raster Analytics

- Scales to support massive volumes of data
- Persisted analytical results hosted on your portal and served as an Image Service

Server-based Distributed Raster Analytics
with Distributed Raster Data Storage



DEMOS

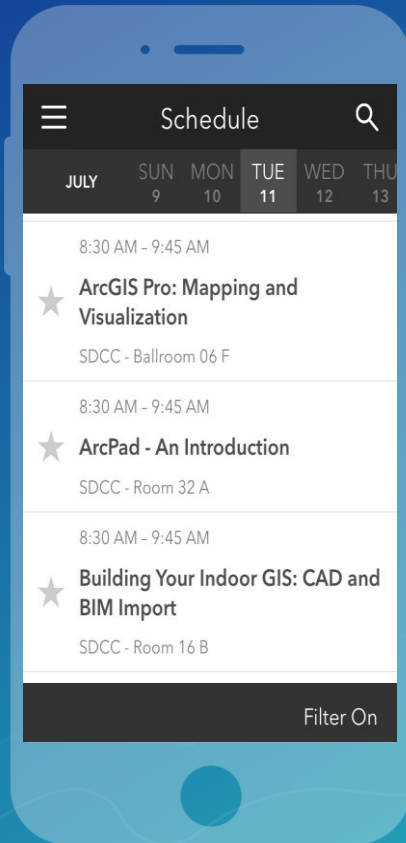


Please Take Our Survey on the Esri Events App!

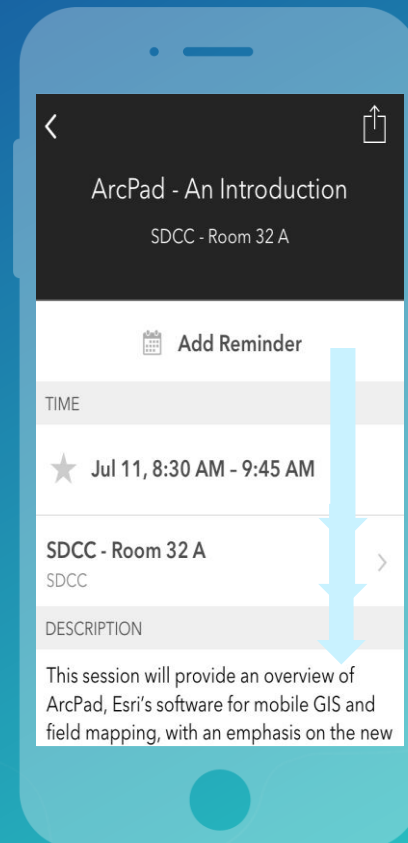
Download the Esri Events app and find your event



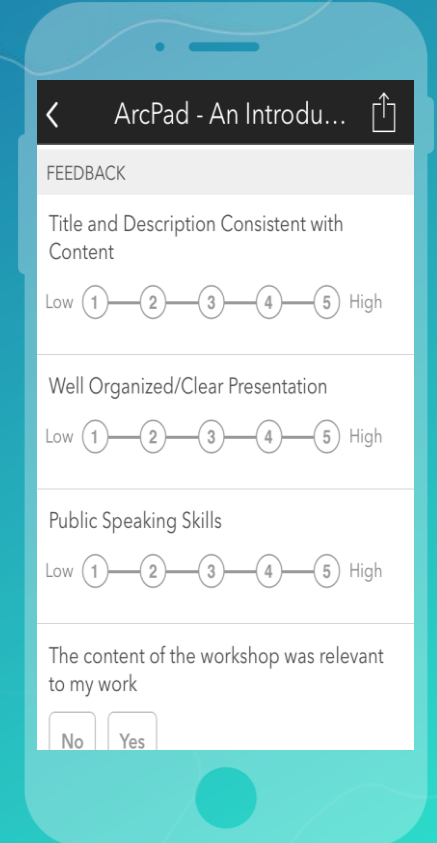
Select the session you attended



Scroll down to find the survey



Complete Answers and Select "Submit"





esri

THE
SCIENCE
OF
WHERE