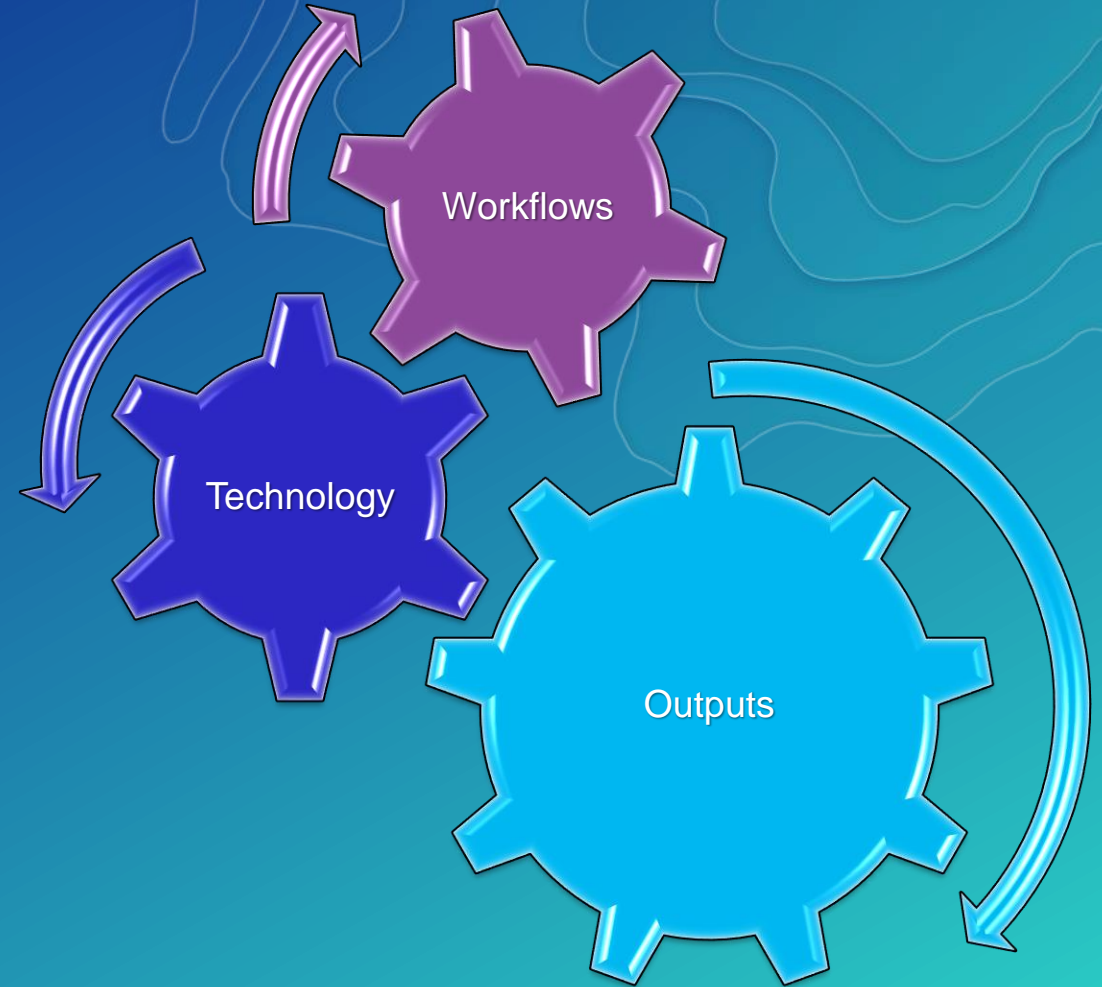


Establish an Initial Operating Capability for Your Organization

Matt Marino | Technical Consulting Manager | Esri Professional Services

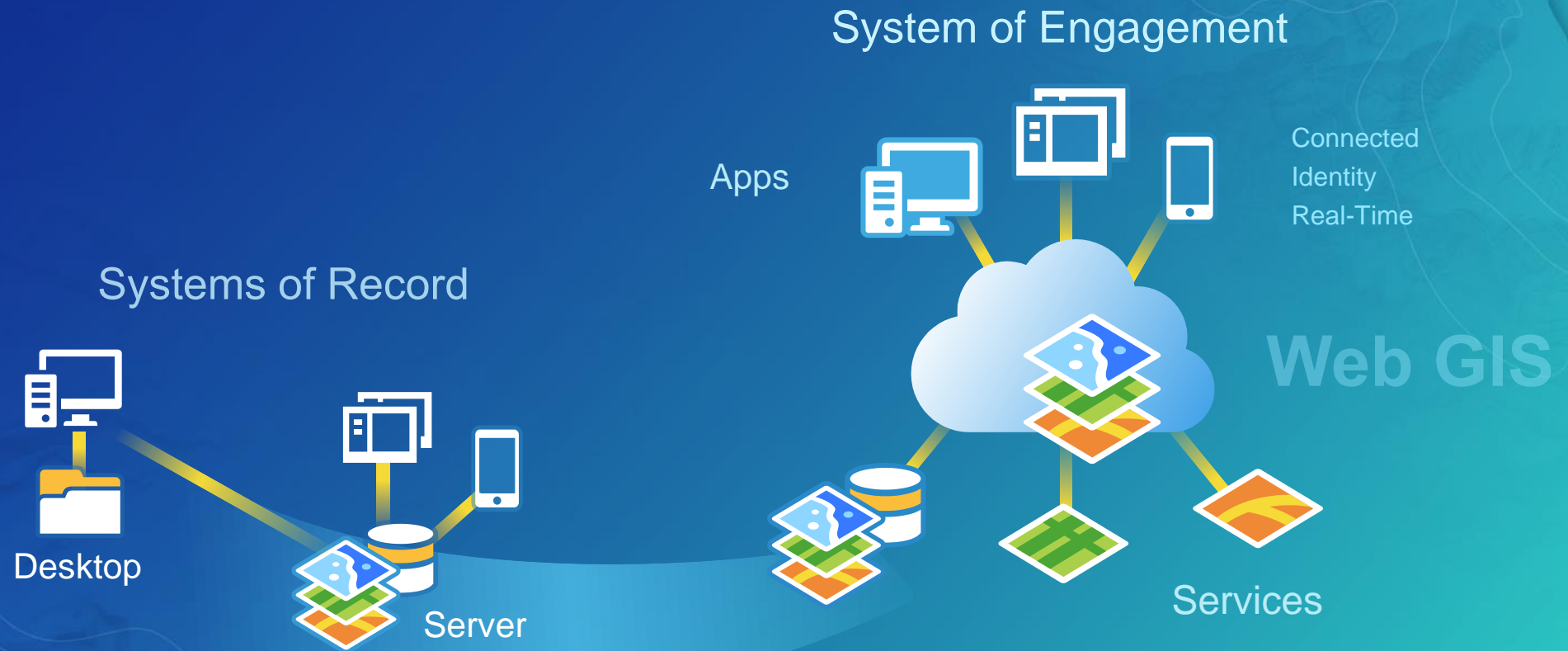
What is Initial Operating Capability?



- “The state achieved when a capability is available in its minimum usefully deployable form”

Web GIS Is Transforming GIS

Opening, integrating and simplifying everything



Traditional Considerations for IOC

- Desktop -> Enterprise Geodatabase: multi-user editing and viewing

Systems of Record



- Desktop to Server: drawing maps in map services



Modern Web GIS Considerations for IOC

- Users & Workflows



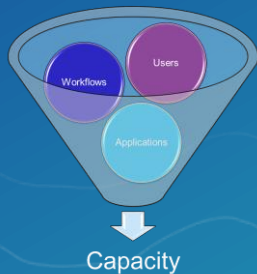
- Data -> Services -> Webmaps



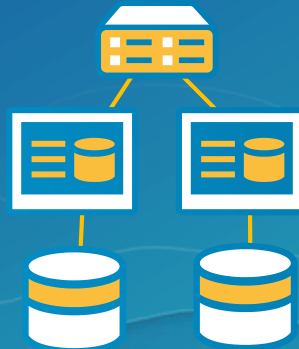
- Security



Capacity



Architecture

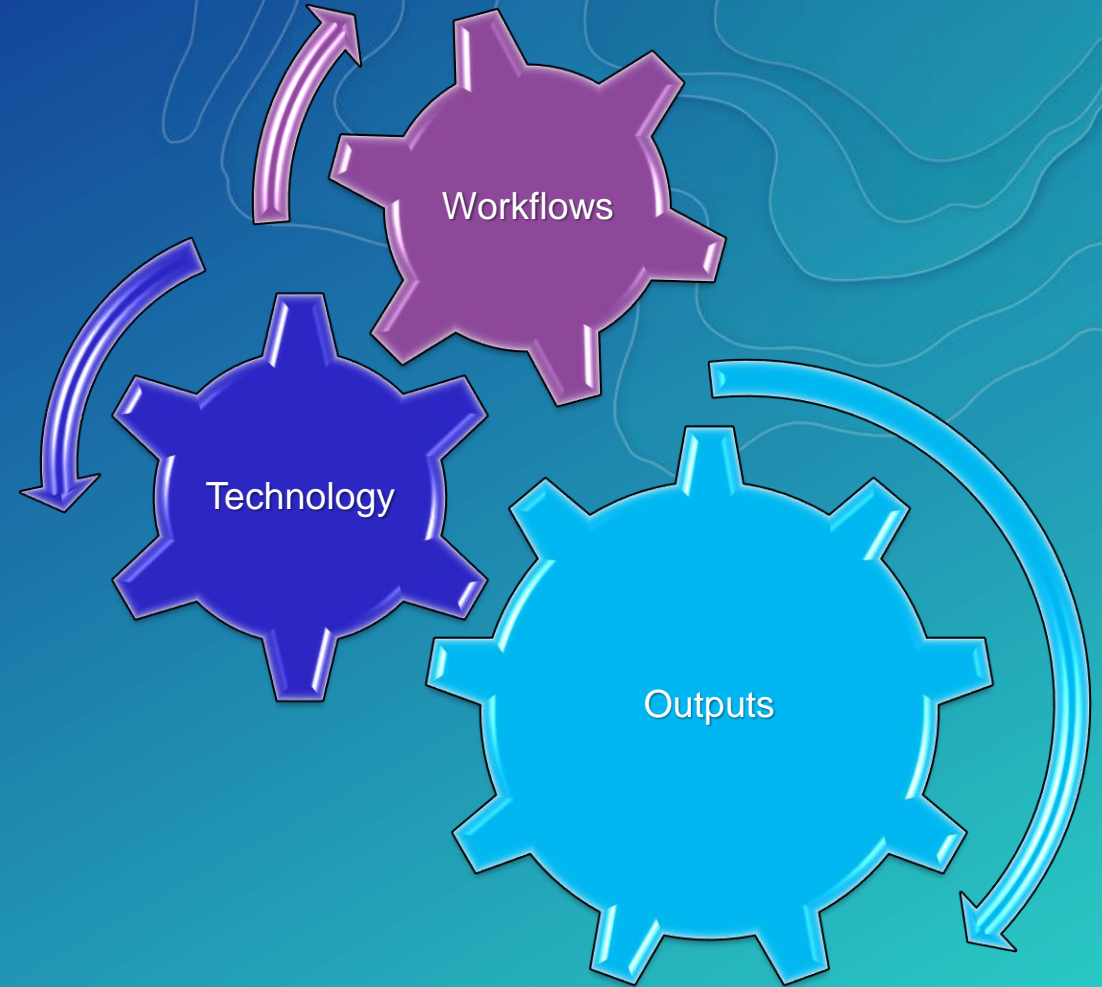


System of
Engagement

Web GIS



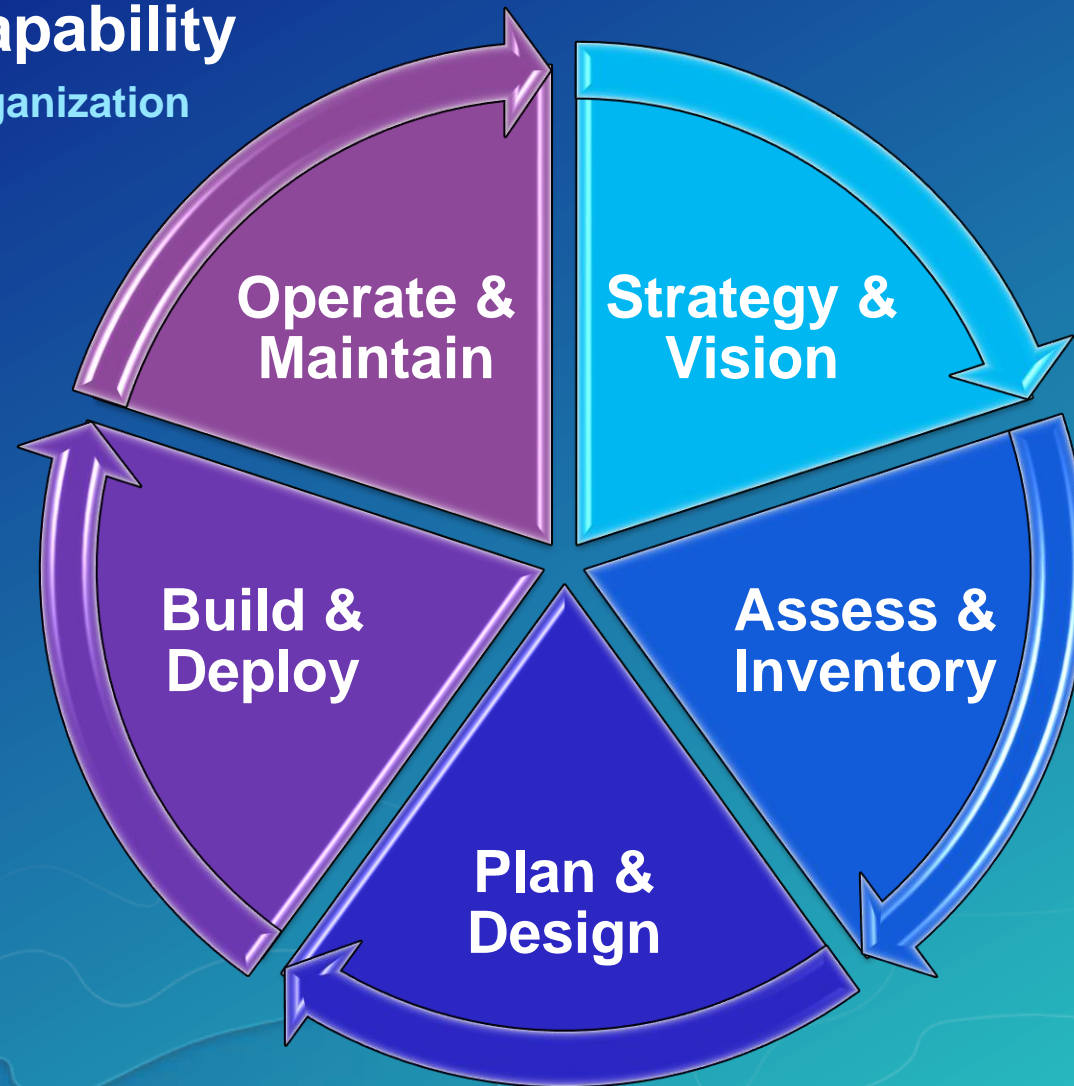
What is Initial Operating Capability?



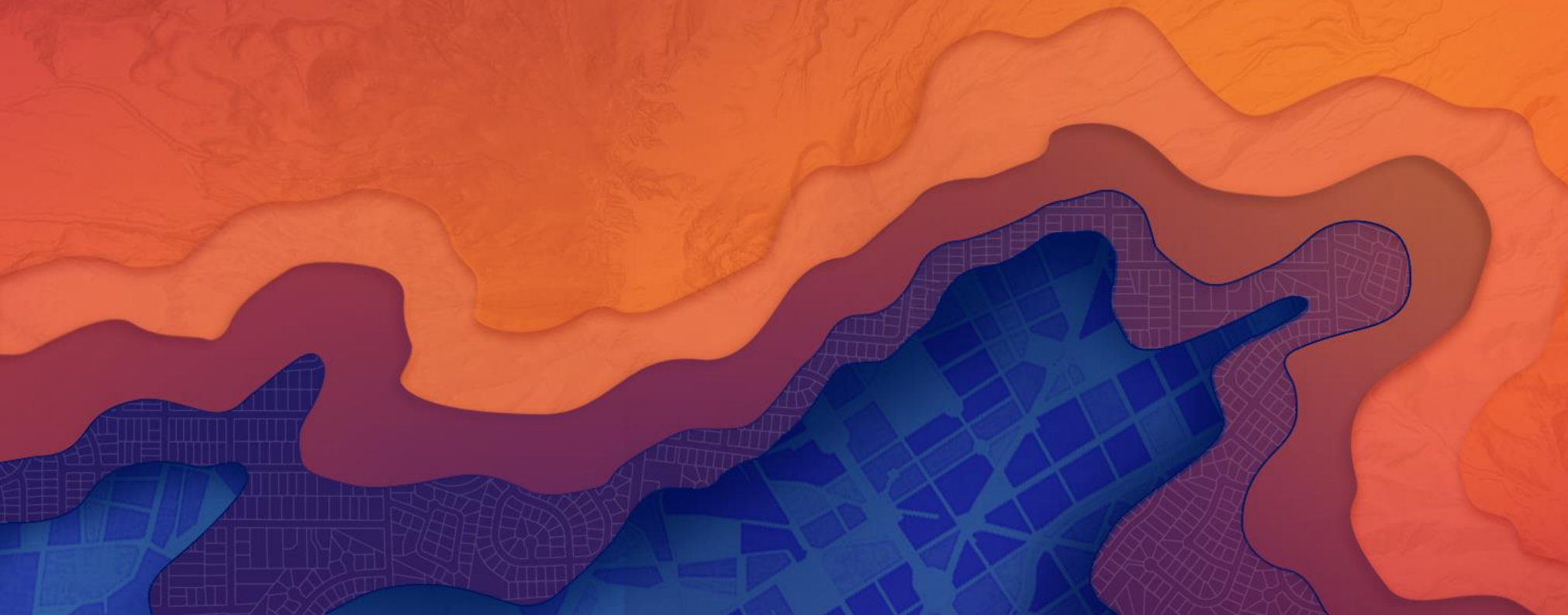
“The state achieved when a capability is available in its minimum usefully deployable form”

Initial Operating Capability

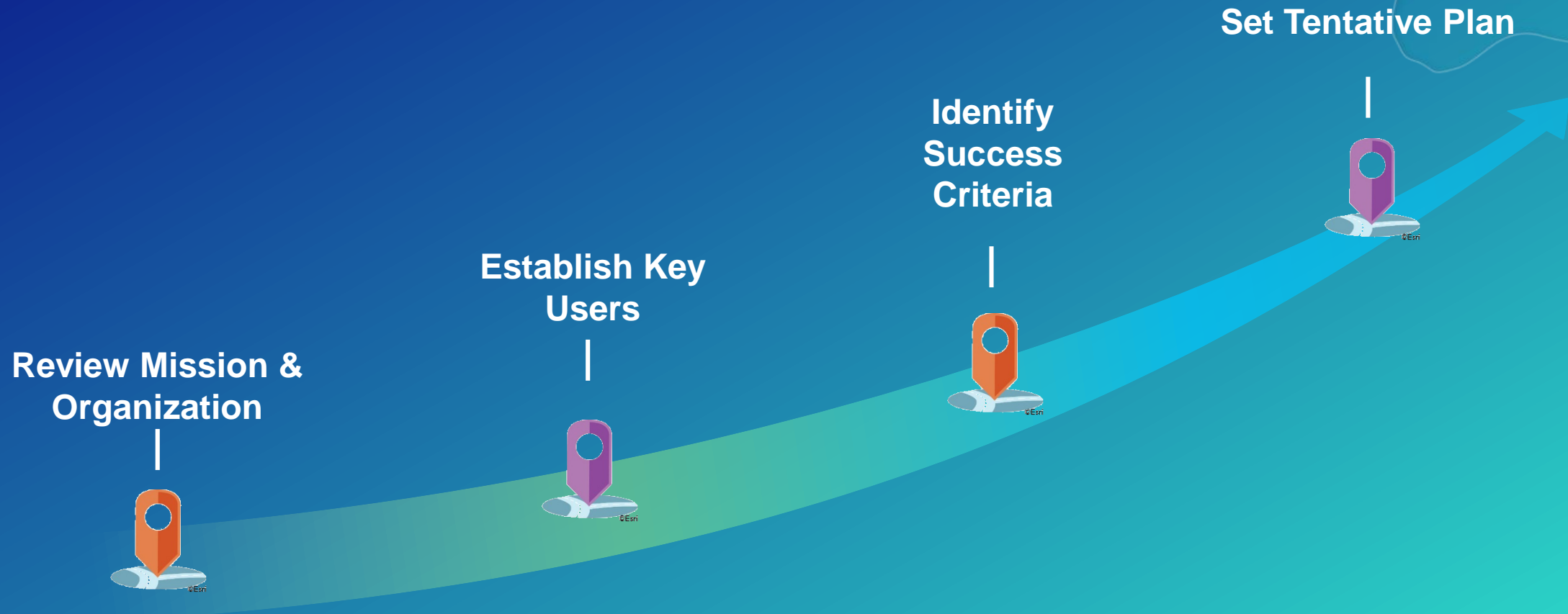
Enable & Empower Your Organization



Strategy & Vision



Roadmap for Success



Organizational Vision

Your Outward Message

The primary mission of the Department of Building Safety is to safeguard the public, promote the health, safety and welfare of the City.....

.....helps its clients achieve profitable growth with a combination of specialized broking expertise, strategic advisory services.....

Esri Professional Services supports customers and partners in the effective implementation and application of ArcGIS software



Establish Key Users

How is Location Valuable to Them?

Desktop Analyst



What is being collected?

Team Supervisor



Where is my team?

Field Worker



Where is my next task?

Discuss Goals & Identify Success

How is Location Valuable to Them?



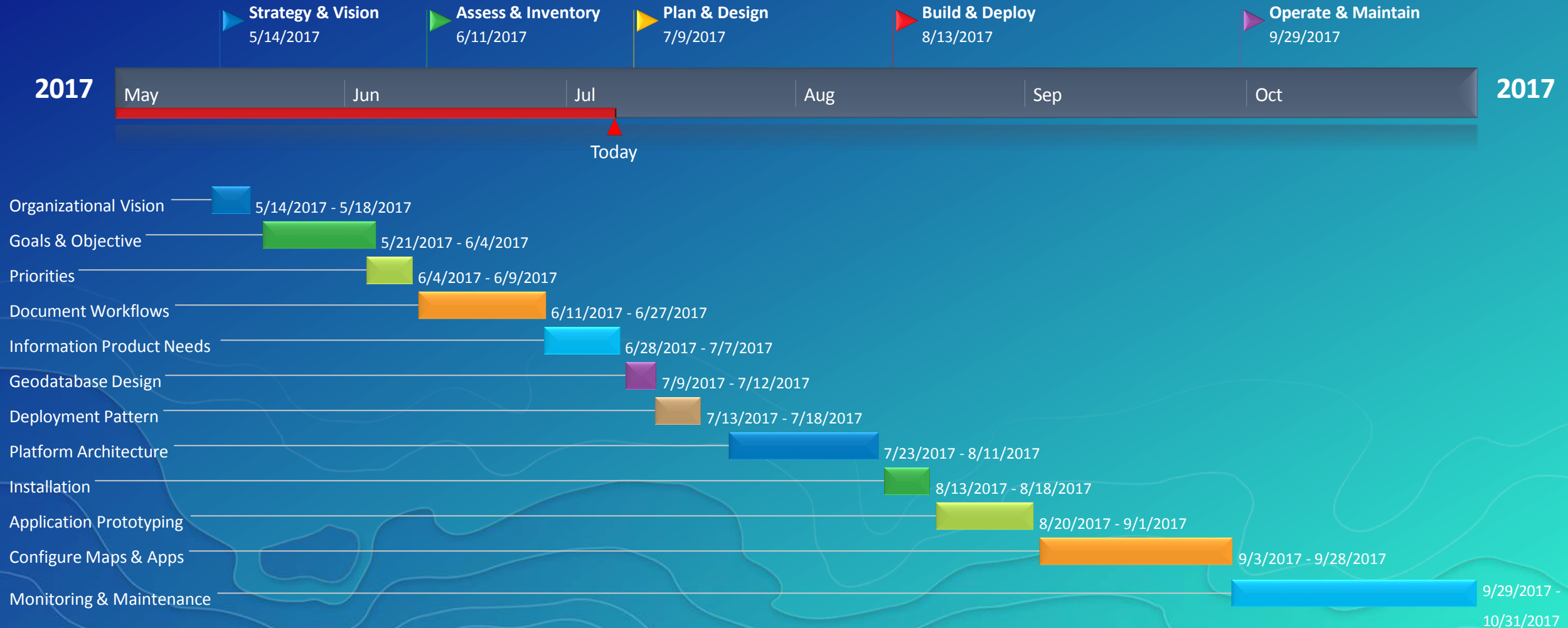
As a [Role] I can [Feature/Function] so that [Goal/Business Value]....



.... I will know I'm successful when I can [select/operate]
[Feature/Function] so that [output] is [visible/complete/ect.]

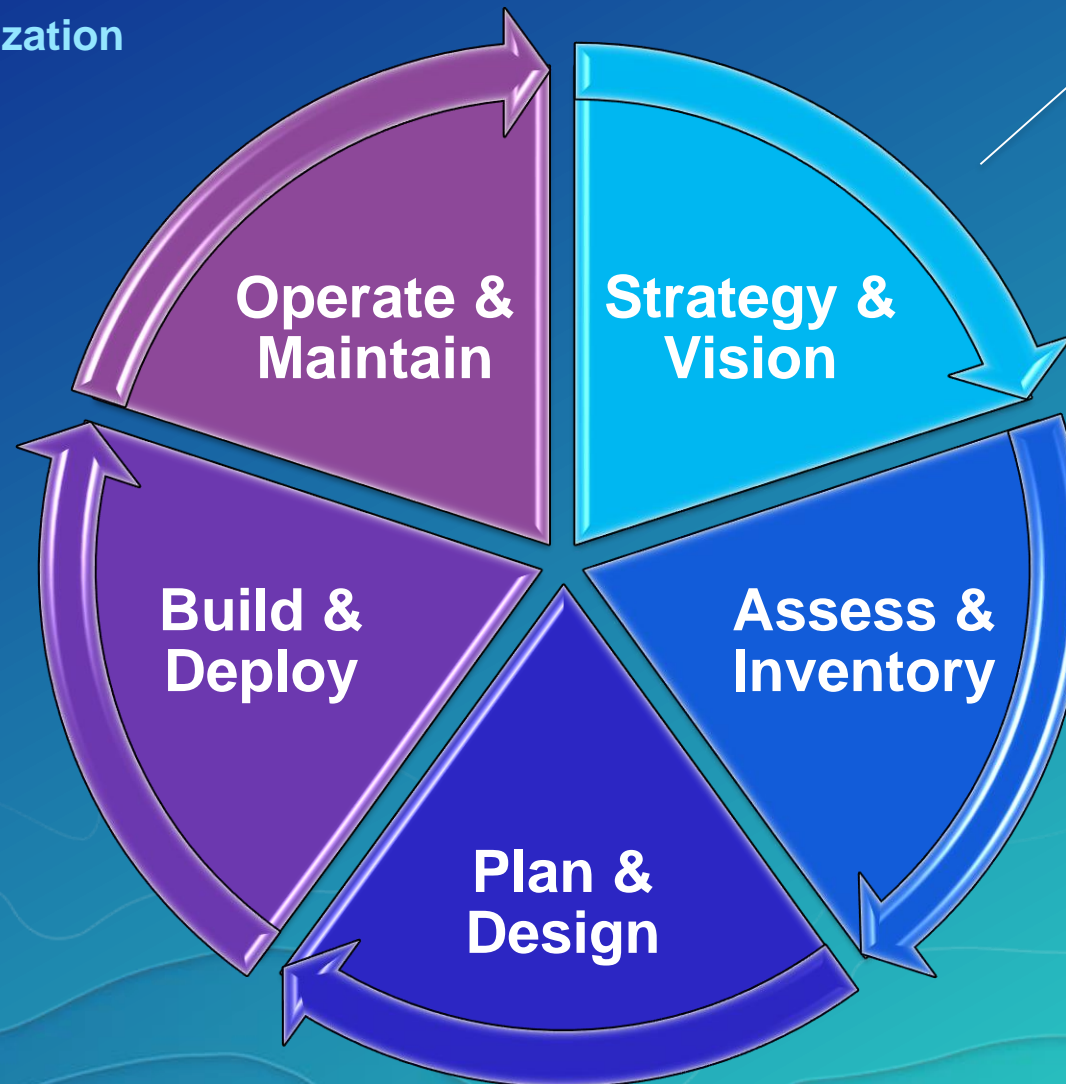
Set a Tentative Plan

Preliminary Roadmap



Initial Operating Capability

Enable & Empower Your Organization



Organizational Vision
Goals & Objective
Success Criteria
Tentative Plan

Assess & Inventory

Org, Business Cases & Infrastructure



Assess Resources

What's available to Use



Technology



Content



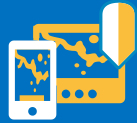
People

Document Workflows

Start with Patterns of Use

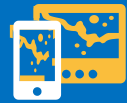


Location Enablement



Discover, use, make, and share maps at work – anywhere, anytime

Constituent Engagement



Facilitate and manage communication with stakeholder

Decision Support



Inform execs and management with maps and location intelligence

Field Mobility



Get authoritative information into and out of the field

Analytics



Describe, predict, and improve business performance

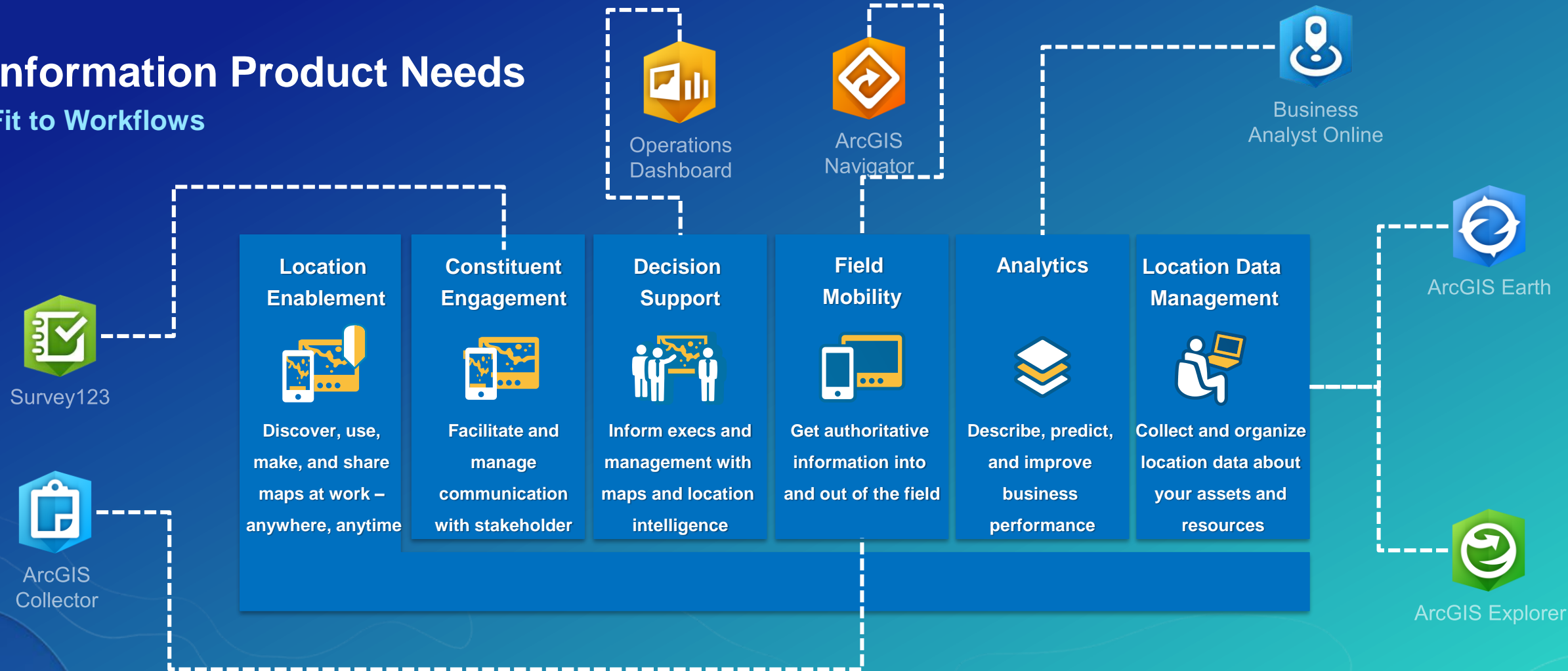
Location Data Management



Collect and organize location data about your assets and resources

Information Product Needs

Fit to Workflows



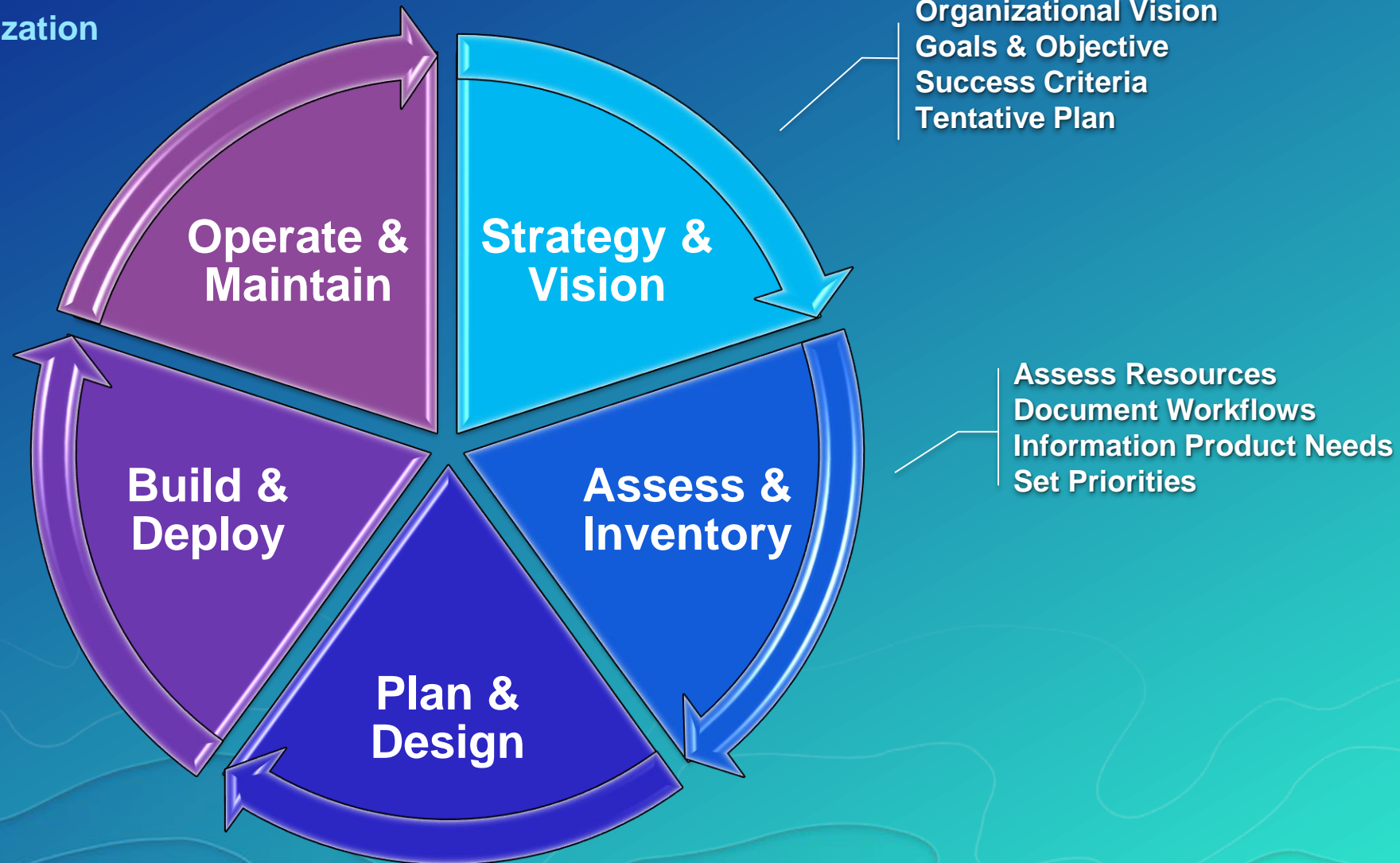
Set Priorities

What's Impactful & Achievable

Product	Impact	Level of Effort	User Base	
Cemetery Navigator	1	5	1	- 4
Public Health Survey	2	1	3	3
Parcel Viewer	5	4	4	4
DPW Asset Collector	3	1	5	10

Initial Operating Capability

Enable & Empower Your Organization



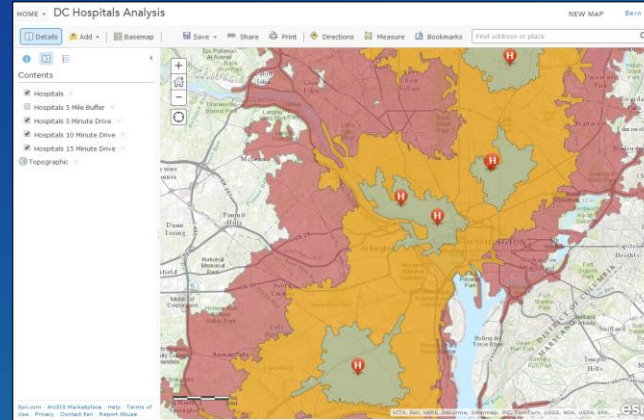
Plan & Design

Org, Business Cases & Infrastructure



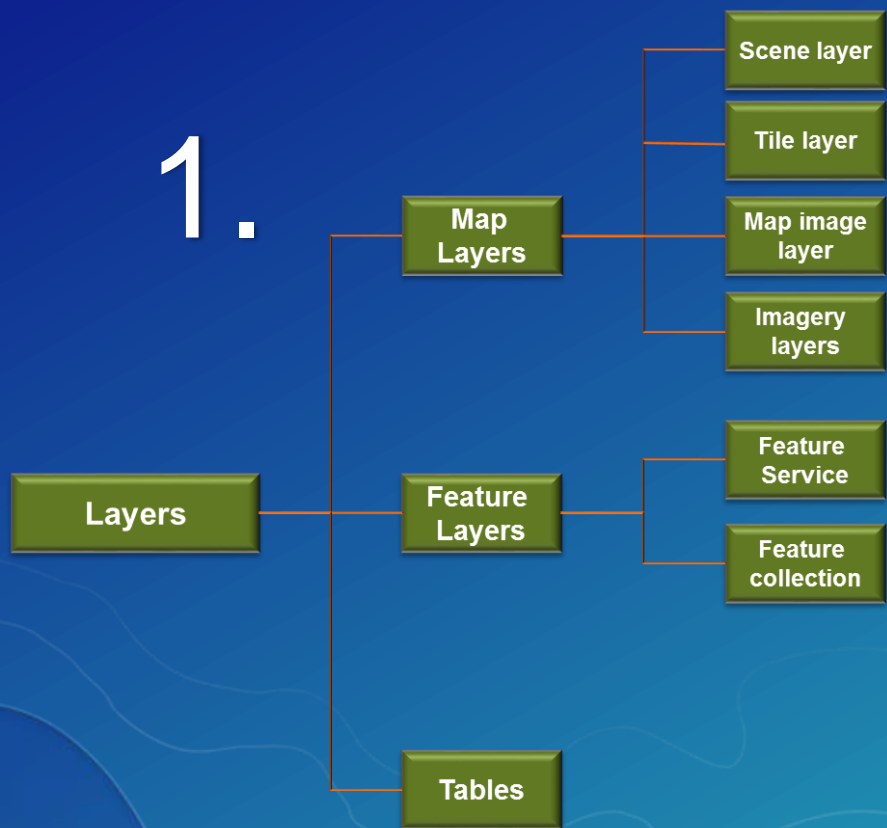
Determine Core Web Maps

Common Maps with Broad Use



Geodatabase Design

Minimum Data Required to Meet Users Needs



2.

ArcGIS Online



Files



ArcGIS Data Store



Enterprise Geodatabase

Security Standards

Align to your Industry and IT Standards

✓ Access

✓ Authentication

✓ Authorization

✓ Encryption



Capacity Planning

Sizing Based on Workflows & Usage

Assemble Requirements

Apply Methodology

Determine Needs

$$\text{Mbps} = \frac{\text{TH} \times \text{Mbits / req}}{3600}$$

Concurrent users

Workflows

GIS Services

Users

TH =

Response Time + Think Time
throughput

response time

Network capacity

software
distribution

Core SpecRate

CPUs

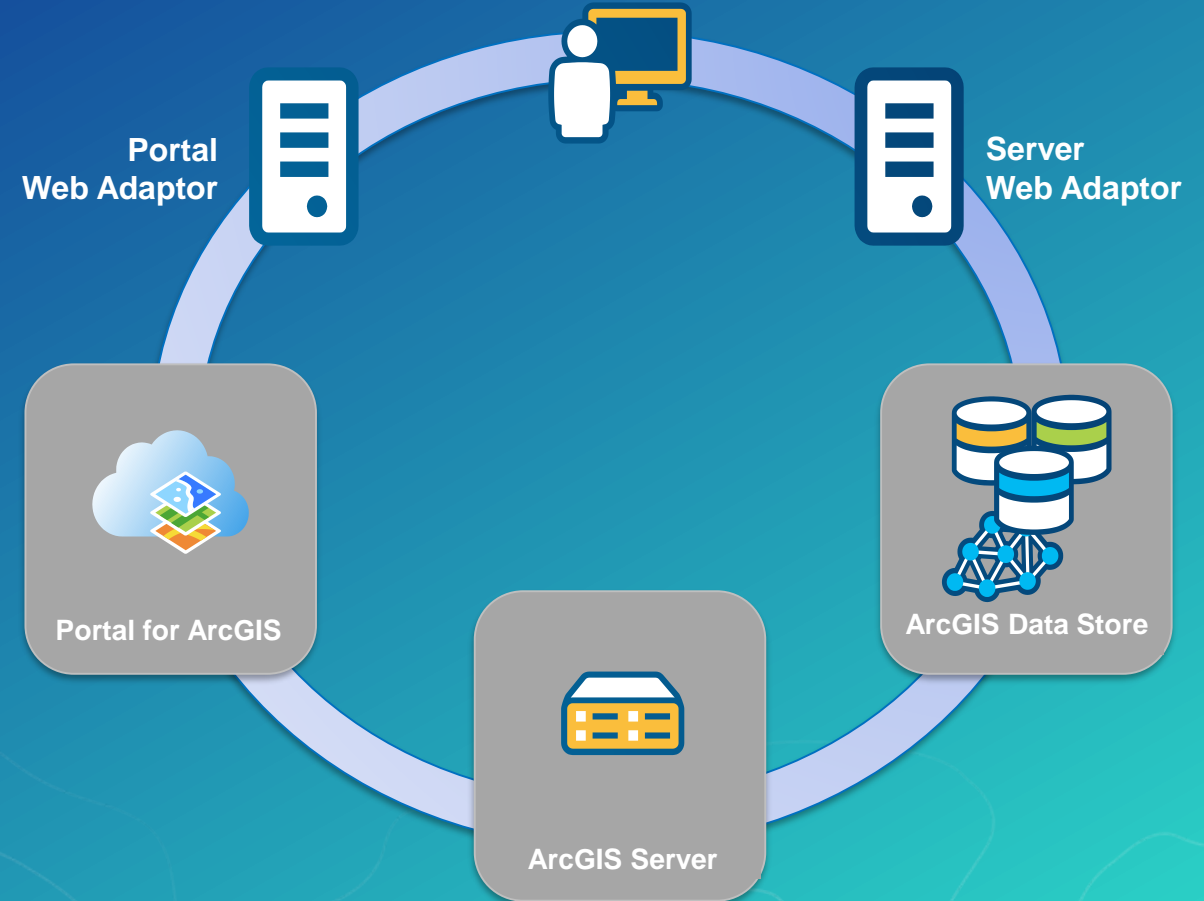
$$\# \text{CPU}_t = \frac{\text{ST}_b \times \text{TH}_t \times 100}{3600 \times \% \text{CPU}} \times \frac{\text{SpecRatePerCPU}_b}{\text{SpecRatePerCPU}_t}$$

Determine a Deployment Pattern

- **Base Enterprise Deployment (10.5)**

- ArcGIS GIS Server
- Portal for ArcGIS
- ArcGIS Datastore
- ArcGIS Web Adaptor

- Can be configured with a single machine or with multiple machines



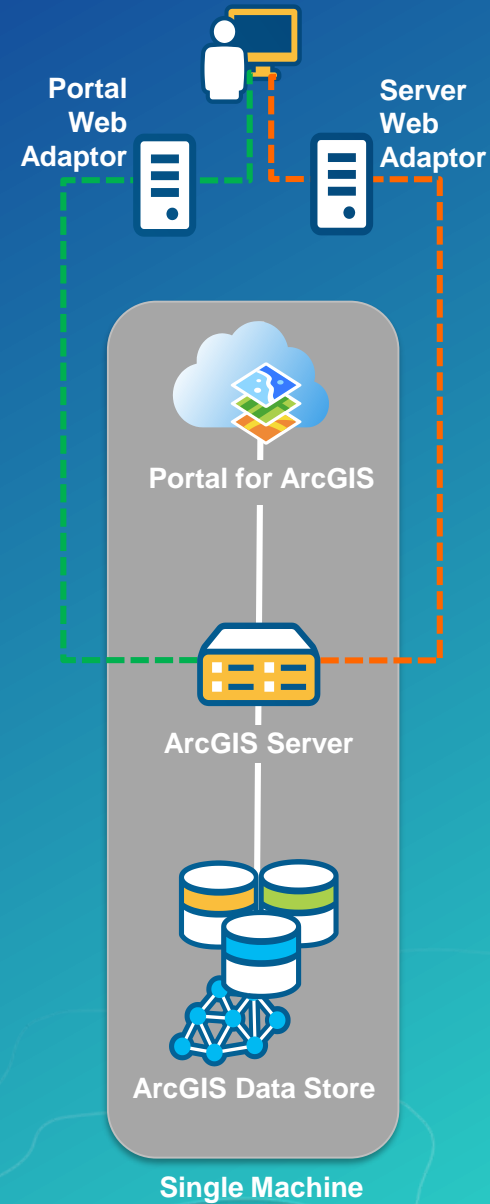
Single Machine Deployment

- **Benefits:**

- Minimal investment
- All-in-one
- Easiest to deploy
- Best used for testing
- Limited impact on hardware resources

- **Considerations:**

- Least stable,
- Not-scalable



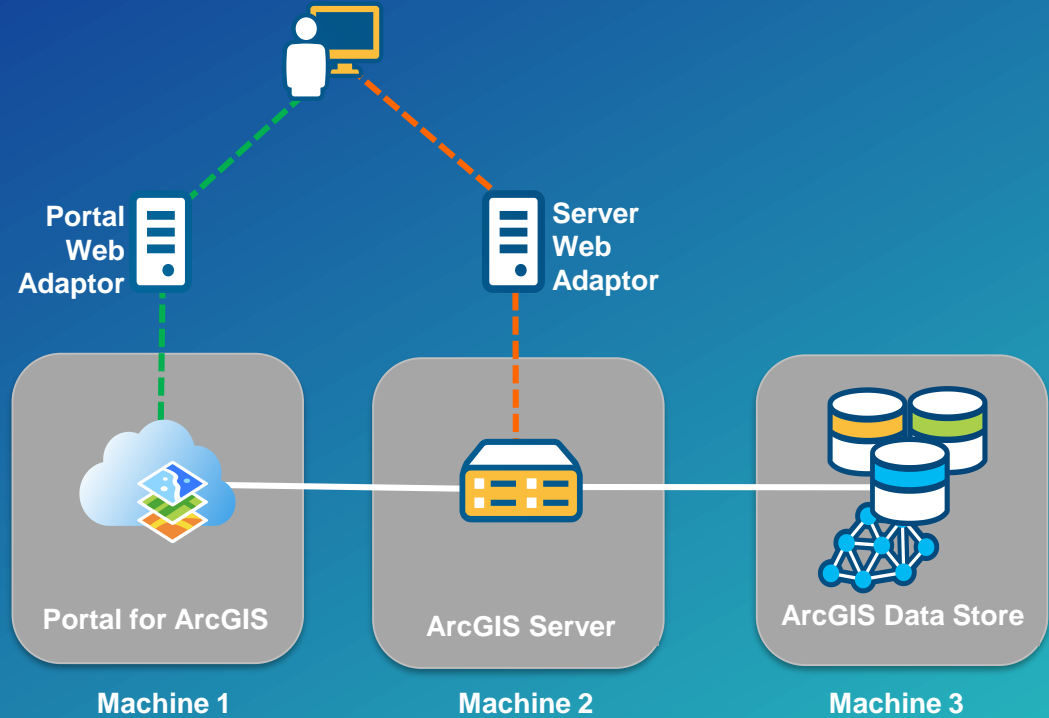
Multitiered Deployment

- **Benefits:**

- Scales to meet increased load
- Separation of work
- More stable

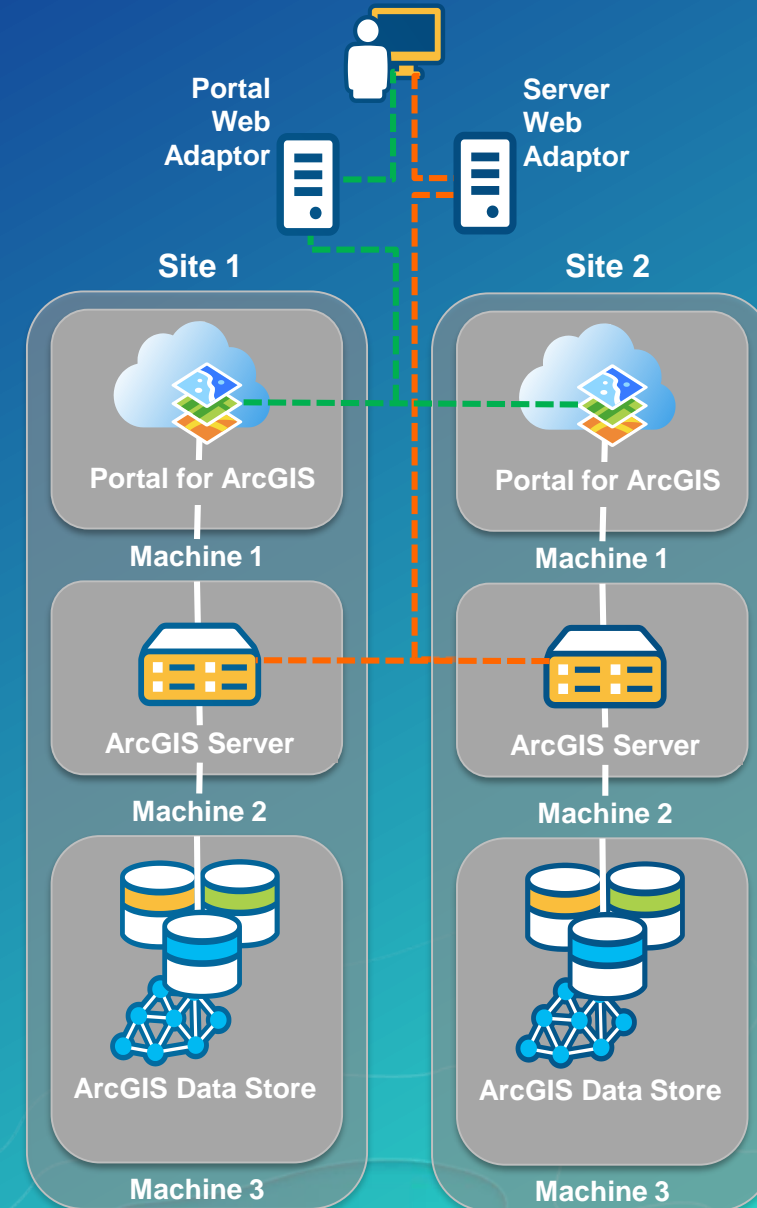
- **Considerations:**

- Increased hardware expenses & IT management



High-Availability Deployment

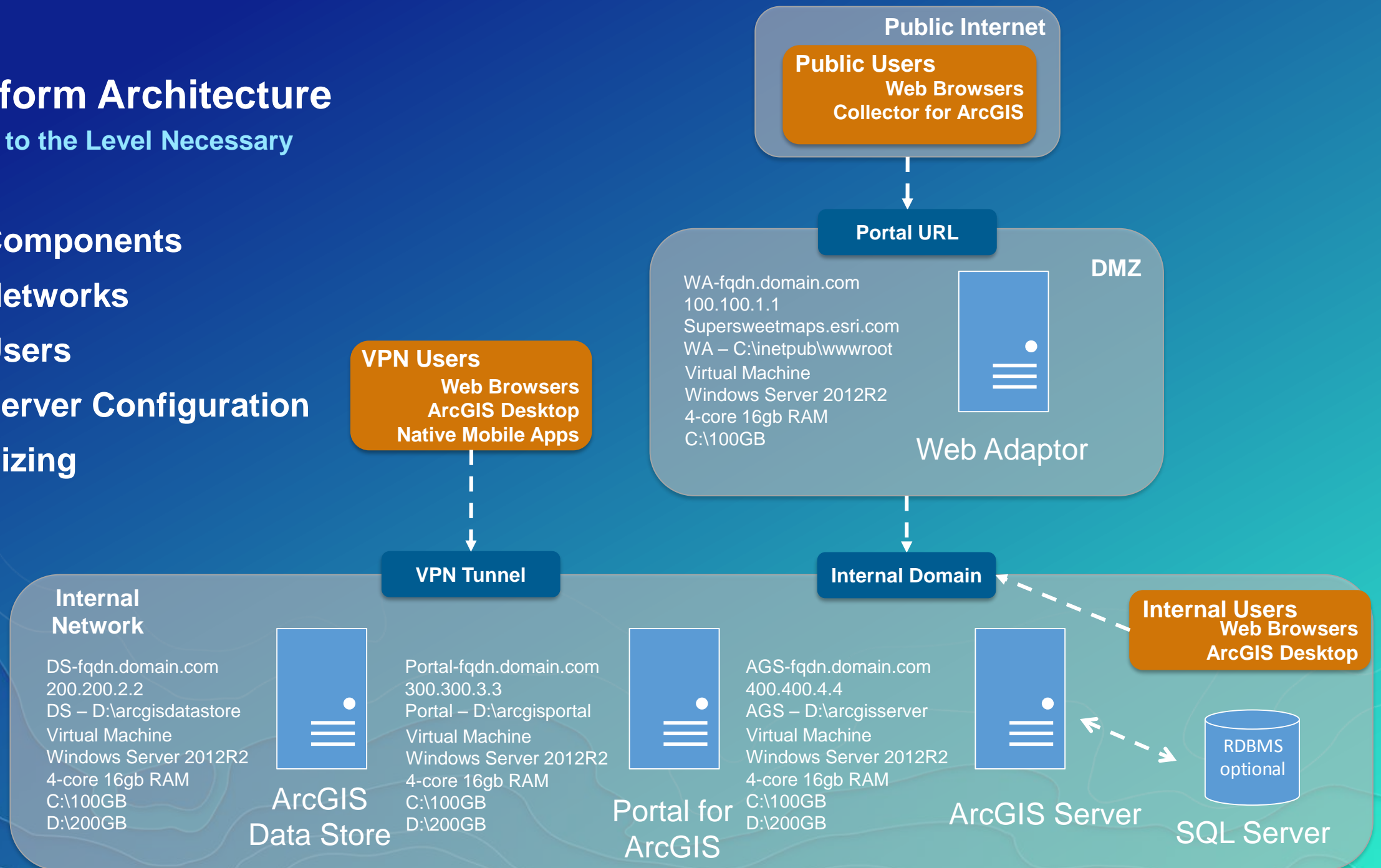
- **Benefits:**
 - Highest stability
 - Load balancing
 - Fail over
- **Considerations:**
 - Increased hardware expenses
 - Integration with 3rd party software
 - More IT management required



Platform Architecture

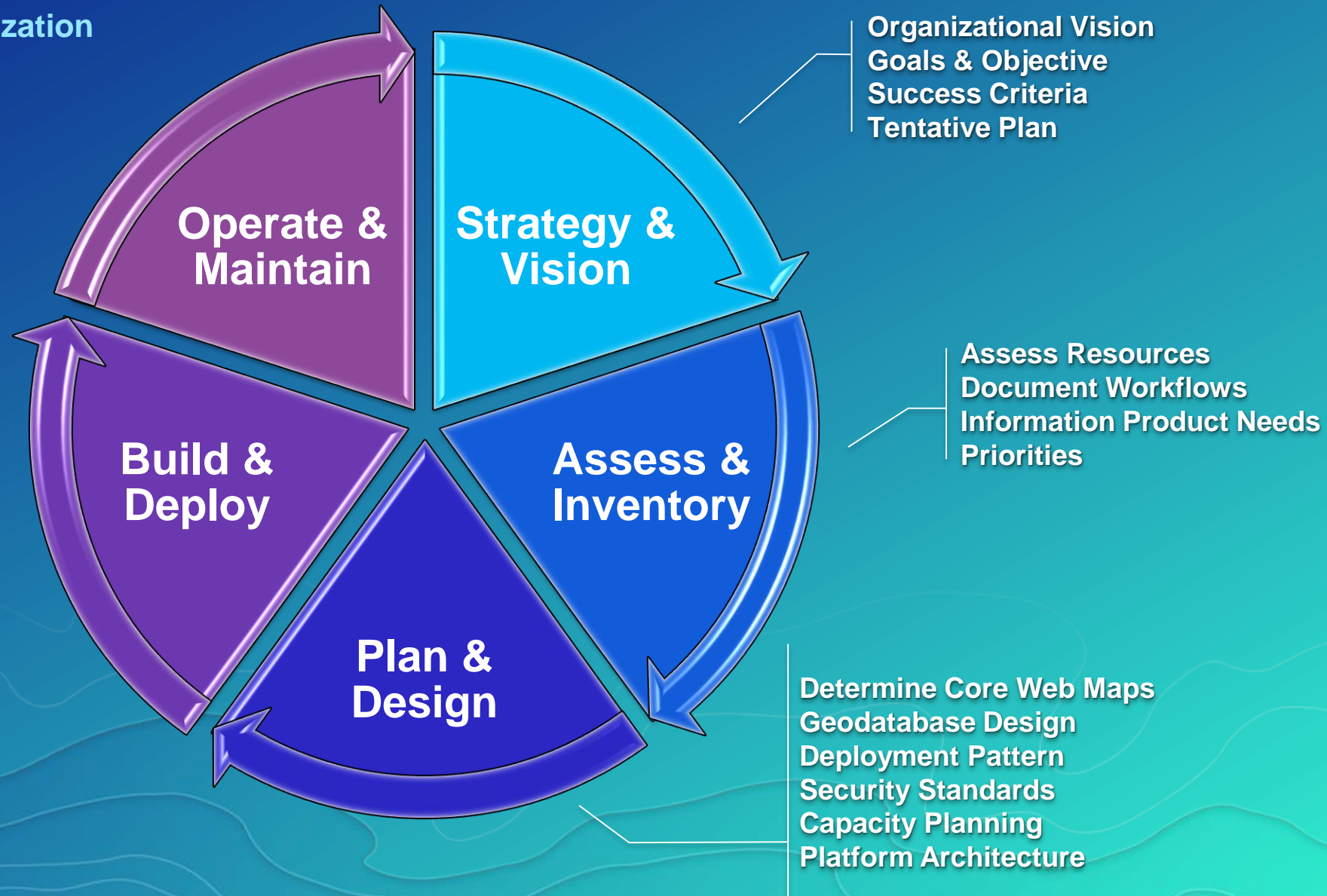
Detail to the Level Necessary

- Components
- Networks
- Users
- Server Configuration
- Sizing



Initial Operating Capability

Enable & Empower Your Organization



Build & Deploy

SUBHEAD INFORMATION

Software Installation

Distribute Content to Users

ArcGIS for Server Installation and Configuration

Initial setup/configuration on server

Install ArcGIS Server technology, apply ArcGIS Server patches

Complete ArcGIS Server post-install process

Install Server Web Adaptor

Portal for ArcGIS Installation and Configuration

Install Portal for ArcGIS, apply patches

Install Portal Web Adaptor and Data Store

Configure Federated/Hosting Server

Configuring supported user authentication

Geodatabase Setup

Create ArcGIS for Desktop database connection

Run Ent. GDB Tool

Review maintenance scripts

Database tuning overview

ArcGIS Administration

Publishing services

ArcGIS Server optimization overview

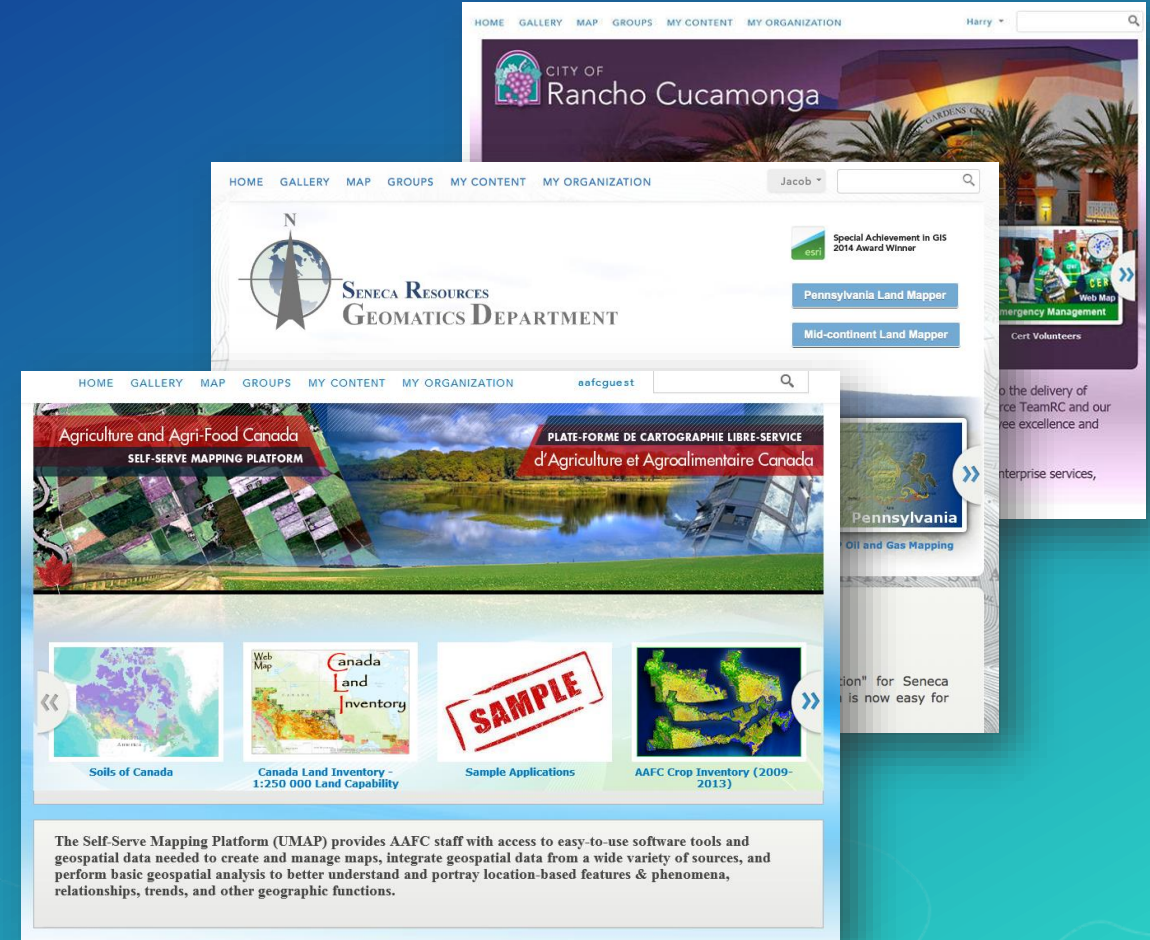
Portal for ArcGIS User, Publish and Administrator functions

ArcGIS Enterprise troubleshooting overview

Configure Organizational Site

Your User's First Impression

- Use your organizational brand
- Use consistent visual cues
- Intuitive naming conventions
- Add useful descriptions
- Pre-populate with content
- Create a resource destination



Building Data

Central & Authoritative Content



Application Prototyping

Path of Least Resistance



Configure Maps & Apps

Finalize Your Prototypes



Business
Analyst Online



AppStudio
for ArcGIS



Operations
Dashboard



ArcGIS
Collector



ArcGIS Explorer



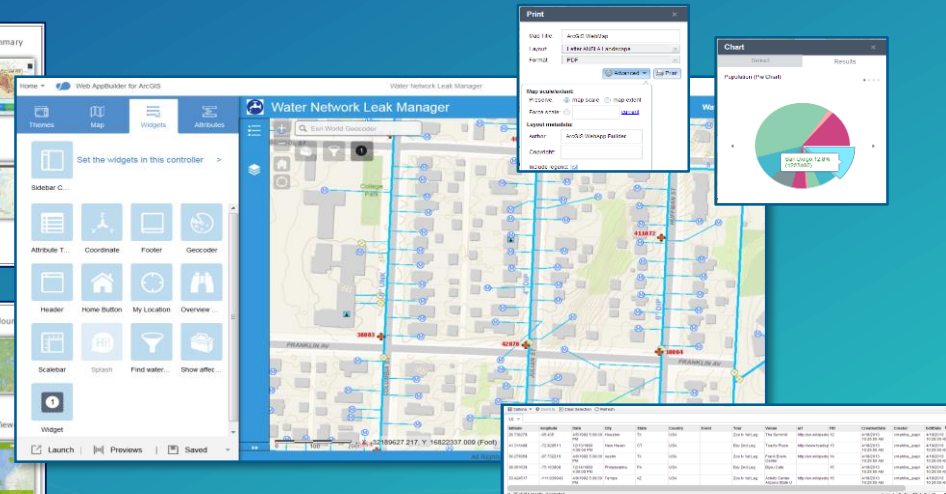
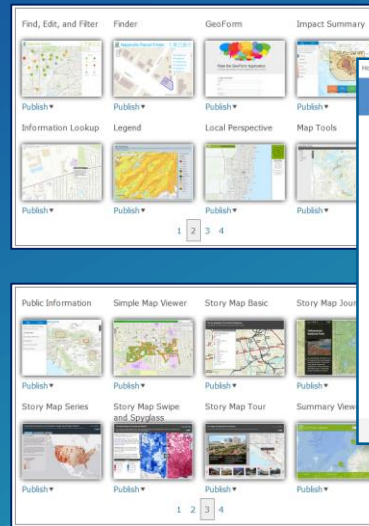
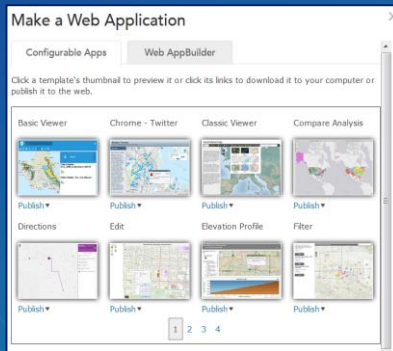
ArcGIS Earth



Survey123



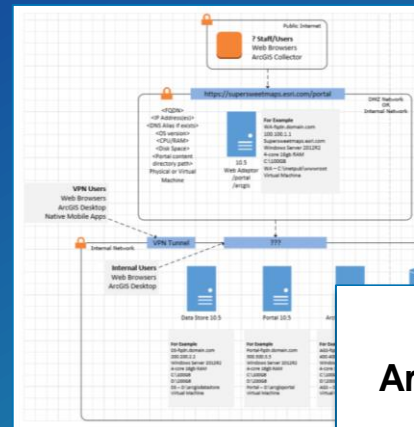
ArcGIS
Navigator



Runbook

Standard Documentation To Capture

- Intended Use Cases
- Capacity Calculations
- System Diagram
- Installation Summary
- Configuration Specifications
- Go-Live Details
- Logged Incidents
- Training Needs
- Restore Procedures



Configuration

Server Overview

Server Name (FQDN)	Server Purpose	IP Address	Intranet DNS Alias
<Server FQDN>	License Server Web Server (IIS) ArcGIS Server Database Server	<IP Address>	<DNS Name>

Software Installation Overview

Software	Server	Installation Path	Data Path
Web Adaptor		C:\inetpub\wwwroot	-
ArcGIS Server	<Server Name>	C:\Program Files\ArcGIS\Server	D:\arcgissrvr
Portal for ArcGIS		C:\Program Files\ArcGIS\Portal	D:\arcgisportal

Username and Passwords

	Username	Password
Domain Service Account	<Service Account>	<Password>
ArcGIS Server		
Primary Site Administrator	<PSA Account>	<Password>
Portal for ArcGIS		
Initial Administrator Account	<Initial Admin Account>	<Password>

ArcGIS Server URLs

Server	Protocol	URL
ArcGIS Server Base URL	HTTP	http://<Server FQDN>:6080/arcgis
ArcGIS Server Base URL	HTTPS	https://<Server FQDN>:6443/arcgis

ArcGIS Enterprise Runbook

Prepared for:

Contact Name, Title
Client Name
Address
City, State Zip Code

Performed:

Prepared By

Technical Lead:

Project Coordinator:



380 New York Street
Redlands, California 92373-8100 USA
P: 909.779.2633

Rollout

Get People Working

☐ Users Empowered

☐ Next Big Idea

✓ Technology Implemented

✓ Information Products Ready

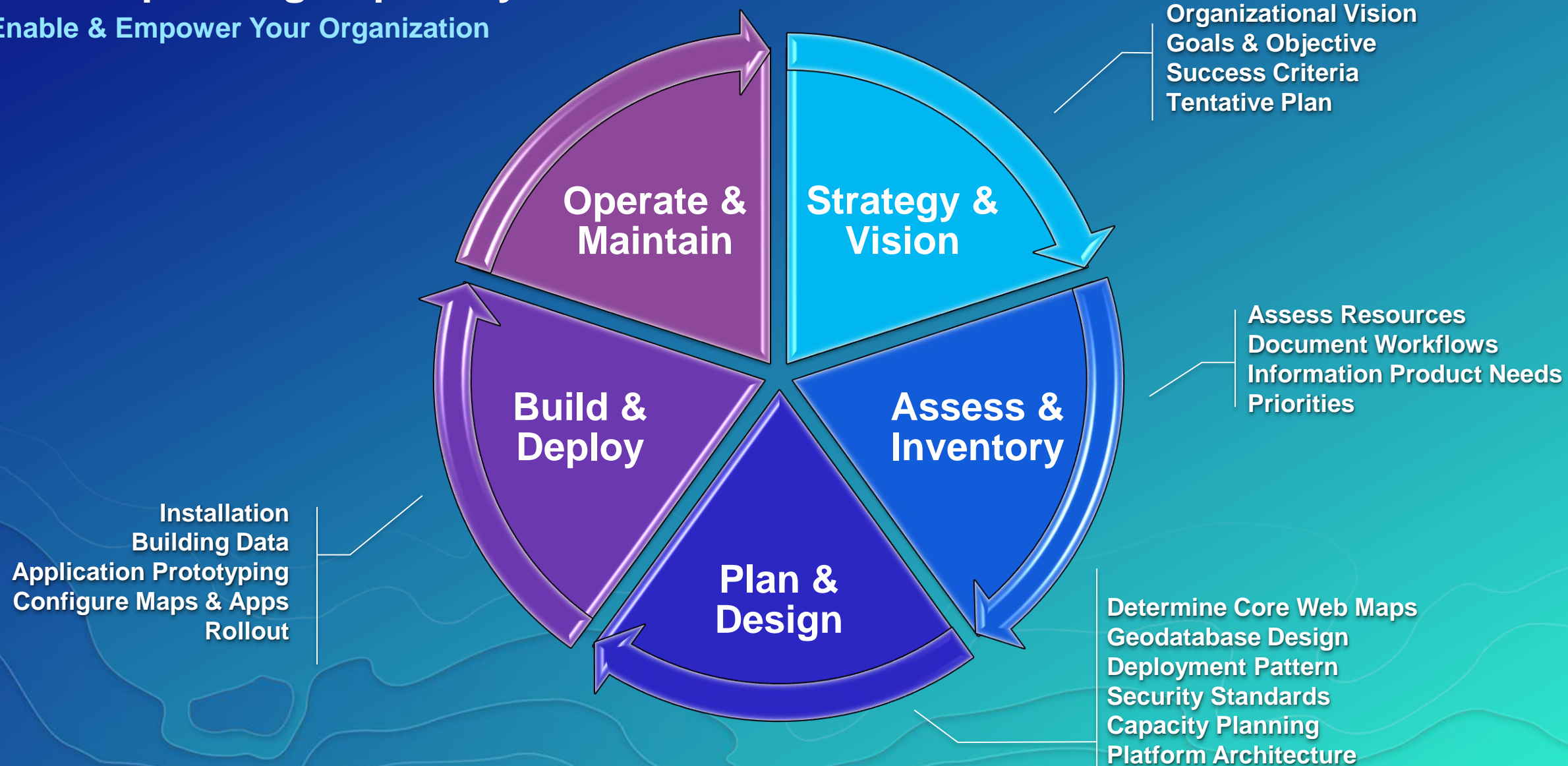
✓ Location Strategy

✓ Detailed Plan



Initial Operating Capability

Enable & Empower Your Organization



Operate & Maintain

SUBHEAD INFORMATION

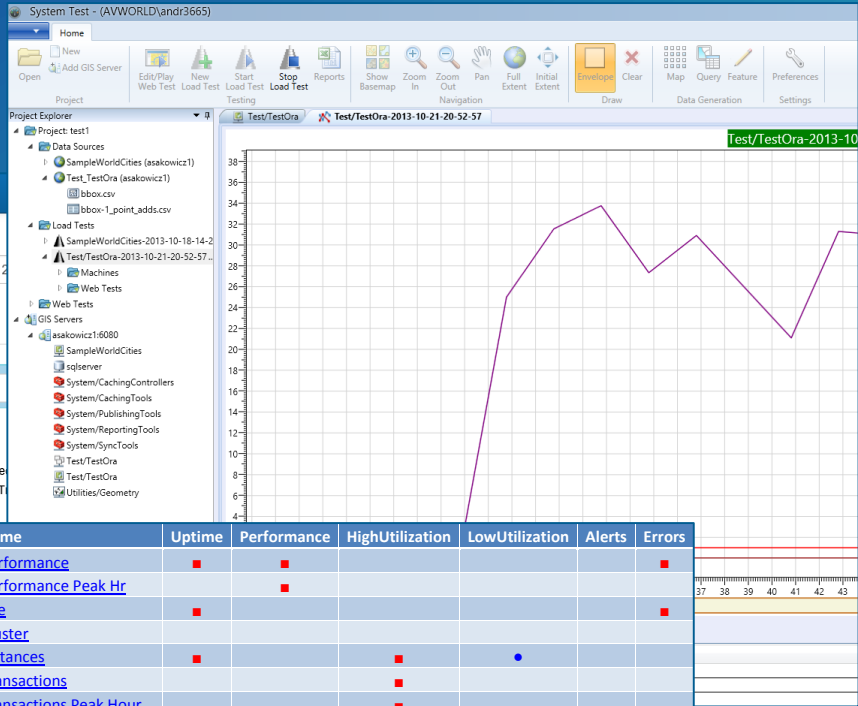
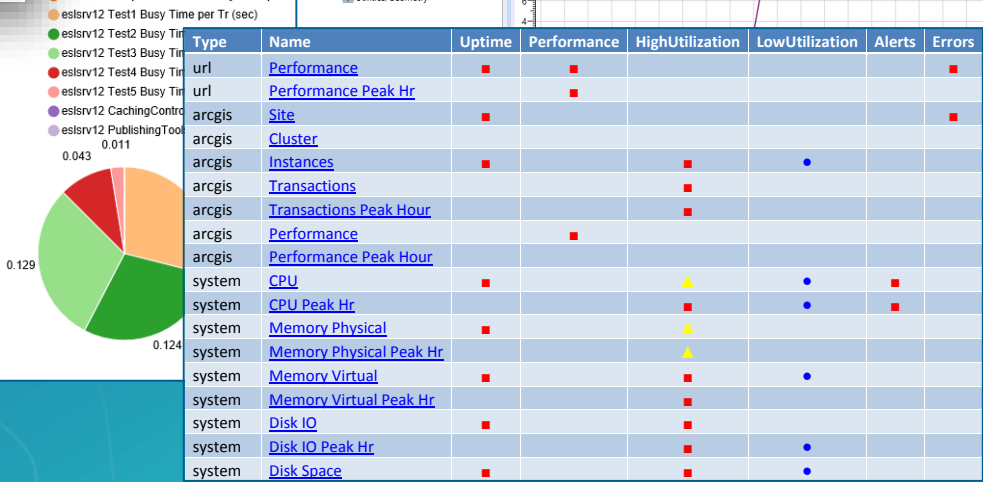
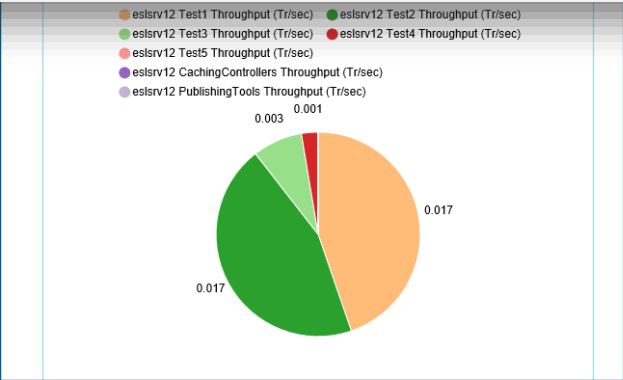
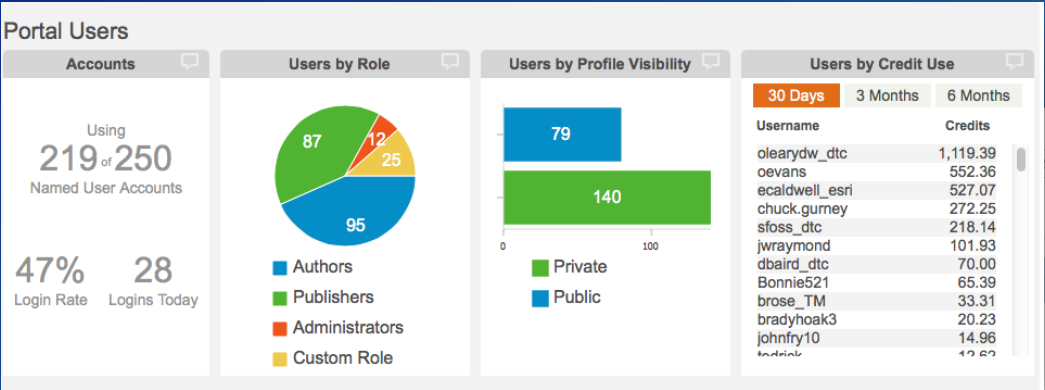
Maintenance

All Facets of Your Implementation



Monitoring

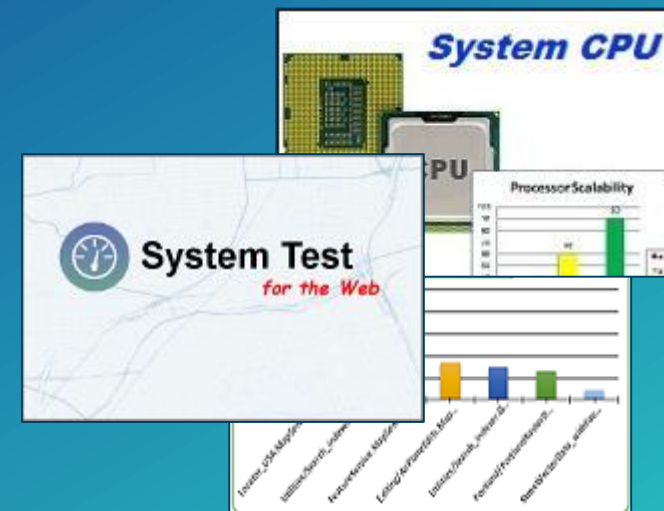
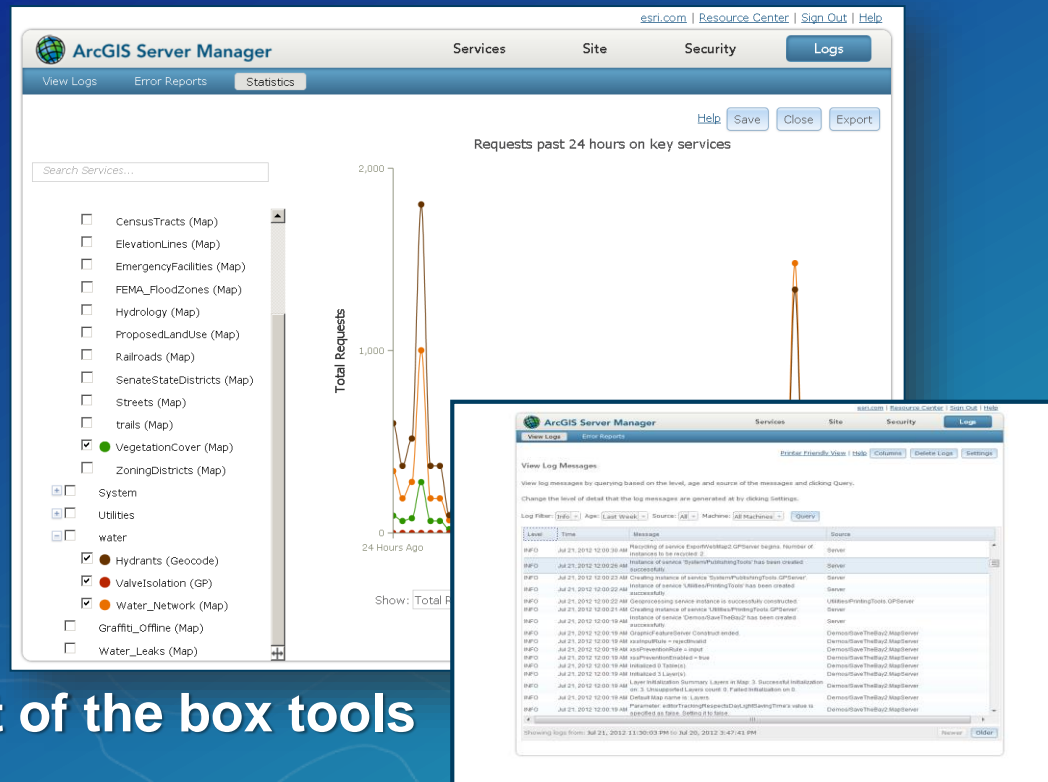
Proactively Review Your Status



Testing, Tuning, & Scaling

Fixing Issues – Preparing For Expansion

Custom Tools



Out of the box tools

Training

Evolve Your People with Your Technology



Skill



Training

Time



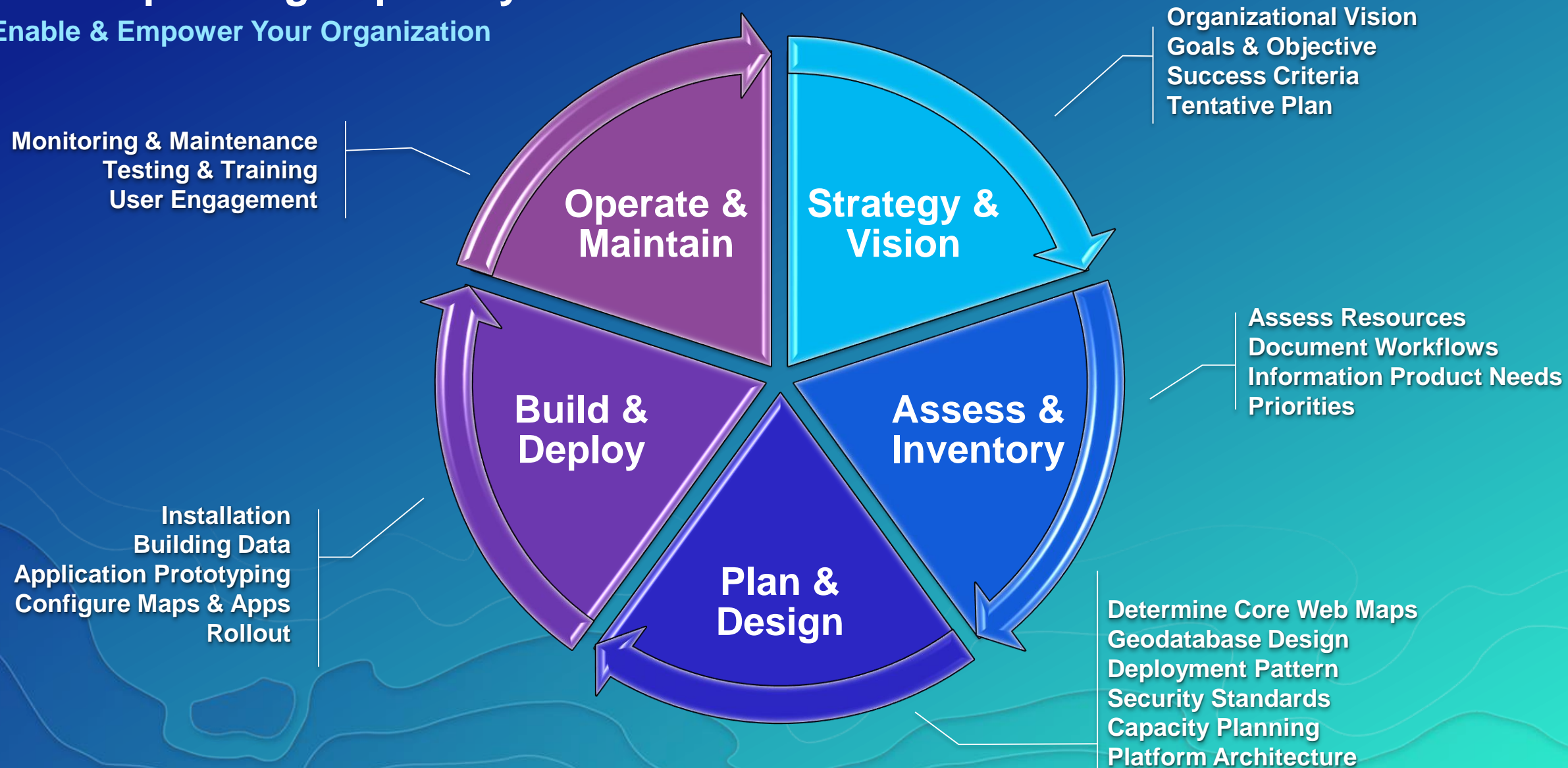
Reconnect With Users

Have Needs Changed?



Initial Operating Capability

Enable & Empower Your Organization



Where to go for Support

SUBHEAD INFORMATION





Framework to help you move forward





AN ESRI
WHITE PAPER

MARCH 2017

Architecting the ArcGIS Platform: Best Practices



Patterns
& Practices

Support

Contact Support

USA +1-888-377-4575

Search Esri Support



Products ▼

Knowledge Base

Downloads

Other Resources ▼

Manage Cases

Request Case

Start Chat

Desktop



ArcGIS Desktop

Industry Focused Extensions

Data and Workflows Extensions

Server



ArcGIS Server

Portal for ArcGIS

Extensions

and more...

Online



ArcGIS Online

[All Places >](#)

Learn–Plan–Configure–Use: ArcGIS Platform Enablement

Actions ▾

[Overview](#)[Activity](#)[Content](#)[People](#)[Projects](#)[Calendar](#)

Log in to follow, share, and participate in this socialgroup.

Welcome to the Learn–Plan–Configure–Use Community!

Learn–Plan–Configure–Use is a public community group created by Esri for the ArcGIS community, to facilitate discussions on best practices to learn, plan, configure and use the ArcGIS Platform. Here, questions can be asked and expert advice can be offered on six key overarching topics in achieving success using the ArcGIS Platform across an organization:

- Strategy & Planning
- Architecture & Security
- Geodata Engineering
- Configuration & Integration
- Workforce Development
- Operational Support

In this community, subject matter experts in each of these topics share tips and advice on best practices, address questions, and engage in discussion on topics challenging GIS professionals. This includes experts from the Esri Services team, who help thousands of ArcGIS users from all over the world to address these challenges every day. Gain from the experience of these teams by asking your questions, share your experience by offering advice, and follow this community to stay connected.

Content by Category

- Strategy & Planning
- Architecture & Security
- Geodata Engineering
- Configuration & Integration
- Workforce Development
- Operational Support

Featured Content

- Lightning Talks in Platform Enablement at UC 2016.pdf
- Platform Enablement at UC 2016.pdf



- Main page
- Categories
- Create new page
- Contributors
- GIS Dictionary
- GIS User Groups
- GIS Events
- GIS Blogs
- Random page
- Popular pages

- Need Help
- Contact us
 - About Wiki.GIS
 - Online help

- Share
- +
 - f
 - t
 - G+

- Tools
- What links here
 - Related changes
 - Special pages
 - Printable version
 - Permanent link
 - Page information

Page Discussion

Read View source View history

Platform Performance

System Design Strategies (select here for table of contents)

- | | | | |
|-----------------------------|-------------------------------|--------------------------------|--------------------------------|
| 1. System Design Process | 2. GIS Software Technology | 3. Software Performance | 4. Server Software Performance |
| 5. GIS Data Administration | 6. Network Communications | 7. Platform Performance | 8. Information Security |
| 9. GIS Product Architecture | 10. Performance Management | 11. City of Rome | 12. System Implementation |
| A1. Capacity Planning Tool | B1. Windows Memory Management | Preface (Executive Summary) | SDSwiki What's New |

Spring 2017 Platform Performance 40th Edition

Chapter 3 (Software Performance) discussed some best practices for publishing high performance map services, and the importance of selecting the right software technology to support your business needs. This chapter will focus on hardware platform performance, and share the value of selecting the right computer technology to support your system performance needs.

Selecting the right hardware will improve user performance, reduce overall system cost, and establish a foundation for building effective GIS operations. Selecting the wrong hardware can contribute to implementation failure - spending money on a system that will not support your business needs.

Hardware vendors do not know what hardware is required to satisfy your GIS needs. This chapter shares the system architecture design methodology developed to help you select the right hardware for your planned GIS operations. This chapter also shares information for justifying hardware purchases based on expected return on investment.

Contents [hide]

- 1 Platform Performance Baseline
 - 1.1 Performance Baseline history
 - 1.2 Moore's Law
 - 1.3 Faster platforms provide more service with less hardware
 - 1.4 Relative platform performance
 - 1.5 Platform performance resources
 - 1.5.1 SPEC performance benchmarks

Training

Your location for **lifelong** learning

Main ▾

Catalog ▾

My Learning ▾

Certification ▾

Help



Authoritative Resources

Thousands of hours of professionally developed and curated content



Relevant Training for Your Role

Content for everyone - students, educators and professionals



Many Ways to Learn

Multiple options and formats to meet your needs



Helping you Grow

Content for all stages along your learning journey

Consulting Services



Project Services

Expert-led engagements throughout the entire project life cycle

Project Services provides comprehensive industry, domain, and technical help. Our experts manage a project's scope, schedule, and budget and use proven methodologies to deliver turnkey systems and applications.

We can consult with you to define the approach to delivering transformational GIS capabilities for your organization.

Business and Technical Consulting Services

Get productive sooner

We offer consulting across multiple business and technical domains depending on what you need and at what level of your organization. Our consultants work directly with you to provide organizational or technical enablement, technical or business strategy.



Business Consulting

Industry subject-matter expertise that can help incorporate GIS into your overall business strategy, or provide advice on project planning.

Enterprise Consulting

Experienced consultants who can advise and guide your enterprise GIS strategy and implementation approach.

Configuration Consulting

ArcGIS installation and configuration specialists providing focused services to enable your teams to get it right the first time.

Rent-a-Tech Consulting

Highly skilled technical specialists - app developers, geodata engineers, geospatial analysts, and more - working alongside your team to help you succeed.

We offer a range of packages, flexible or custom engagements, working either remote or on-site with your team, over a short or long term.

Esri Service Packages

High-Impact, Cost-Effective Consulting Services

Esri® Service Packages are short-term, high-impact services, delivered by Esri professionals, that provide knowledge transfer, best practices, and consulting support on a variety of Esri products and GIS management tasks.

Service packages help you

- Implement Esri technology faster.
- Increase productivity and operational effectiveness.

What are Esri Service Packages?

Service Packages are standardized service offerings with a defined scope and fixed price. They are available to US customers and partners. The following types of Service Packages are offered:

- **Jumpstart:** Designed to help you quickly become self-sufficient in installing, implementing, and managing Esri software, Jumpstart Services Packages typically provide technical knowledge transfer and best practices for the use of the ArcGIS Platform.
- **Launch Kit:** Collaborative engagements to empower you with the knowledge and workflows to manage your organizational account, build high quality content and create focused maps and apps.
- **Enterprise Consulting:** Get specific assistance in key areas such as enterprise GIS architecture design and GIS for land records or facilities.
- **Workshop:** Interactive, hands-on technology transfer helps you become self-sufficient in using Esri technology. Workshop-based Service Packages cover specific Esri technology and GIS- or industry-related activities.

See the back page for a list of available packages.



"I am grateful to Esri for validating my faith in the people and solutions that make your organization the world leader in GIS. As I sit here, we are far ahead of where I thought we would be this evening—even with what I would have considered a successful jump start experience. So there's nothing but positives in this feedback."

There is no doubt that the deliberate approach that was taken to this program prior to the team's visit played a huge role in our success."

Eric Schmidt, MA, GISP, GIS-S
GIS Supervisor
Douglas County, NV

Esri Service Packages

High-Impact, Cost-Effective Consulting Services

ArcGIS Enterprise Jumpstart

Best Practices for Implementing ArcGIS Enterprise

Esri's ArcGIS Enterprise Jumpstart provides the support you need to learn how to implement and leverage ArcGIS Enterprise on your infrastructure and get you up and running quickly with the ArcGIS platform. During this on-site engagement, an Esri consultant will work with you to install and configure the ArcGIS Enterprise software and help you learn best practices on how to operate and administer your deployment to meet your needs.

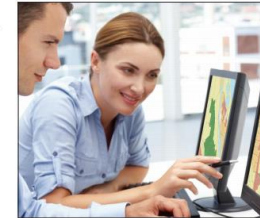
With Esri's support, you'll

- Reduce the amount of time it takes to install, configure, and become proficient.
- Increase the productivity and effectiveness of your implementation of the ArcGIS Platform.

Work side-by-side with an Esri consultant to:

- Plan and diagram your ArcGIS Enterprise Implementation based on proven deployment patterns.
- Setup and configure ArcGIS Enterprise Components including ArcGIS Server, Portal for ArcGIS, and the ArcGIS Data Store.
- Connect to data sources and publish services.
- Learn to administer your environment and perform diagnostics.
- Review other enterprise GIS functions based on your needs.

Email ProfServices@esri.com or
Visit esri.com/servicepackages.



Esri Service Packages

High-Impact, Cost-Effective Consulting Services

Capacity Planning

System Recommendations Based on Your Workflows and Usage

Esri's Capacity Planning services package provides you with access to an Esri enterprise consultant who will review your current and anticipated services, workflows, data sources, user workload, and application architecture to calculate the future server capacity needs for an ArcGIS Server site.

With Esri's support, you'll

- Understand your infrastructure and licensing requirements before deploying ArcGIS Enterprise.
- Optimize your implementation of the ArcGIS platform for current and anticipated use.

- Review your input through emails, calls, and webcasts.
- Apply our capacity planning methodology using tools designed by Esri.
- Determine system requirements based on our best practices.
- Receive a report detailing the anticipated workload, server hardware, and network capacities needed to support your future capacity.



Email ProfServices@esri.com or
Visit esri.com/servicepackages.

Esri Service Packages

High-Impact, Cost-Effective Consulting Services

Web GIS Launch Kit

Building Maps & Apps—Engaging Users

Gain access to an Esri platform engineer to help you put the capabilities of Web GIS into the hands of your users. This service will focus on identifying organizational Web GIS opportunities and providing you with the tools and knowledge to implement accessible geographic information system (GIS) solutions.

With Esri's support, you'll

- Understand your organization's Web GIS goals.
- Foster adoption of GIS by your teams and stakeholders.



During this engagement, your Esri platform engineer will get you up and running with Web GIS by helping you to

- Configure your Web GIS organization using ArcGIS Online or Portal for ArcGIS.
- Leverage your existing data and applications.
- Build powerful maps and apps to meet your users' needs.
- Establish best practices.

Email ProfServices@esri.com or
Visit esri.com/servicepackages.



Esri Service Packages

High-Impact, Cost-Effective Consulting Services

Enterprise GIS Health Check

Proactively Review and Assess Your GIS

The Enterprise GIS Health Check is an on-site engagement providing early detection of potential issues through a review of your system configuration, error logs, system administration, and operations.

With Esri's support, you'll

- Discover areas for performance improvements.
- Evaluate potential issues early.

- Review your ArcGIS implementation, user needs, restrictions, and goals.
- Discuss your key apps, workflows, data sources, and concerns.
- Collect empirical data on the state of your implementation in order to make informed decisions on possible improvements.
- Receive a report of findings and recommendations detailing current health of your GIS.

Email ProfServices@esri.com or
Visit esri.com/servicepackages.



Please Take Our Survey on the Esri Events App!

Download the Esri Events app and find your event



Select the session you attended



Scroll down to find the survey



Complete Answers and Select "Submit"





esri

THE
SCIENCE
OF
WHERE