

Creating Story Maps with Imagery

Mark Romero

What is a Story Map?

They make it easy to harness the power of maps and geography to tell your story.

Esri Story Maps combine authoritative maps with narrative text, images, and multimedia content.

The challenging part is preparing the data and making it accessible and available

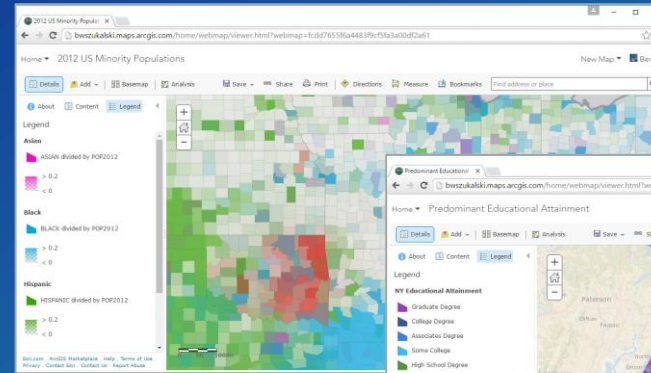
What do you need?



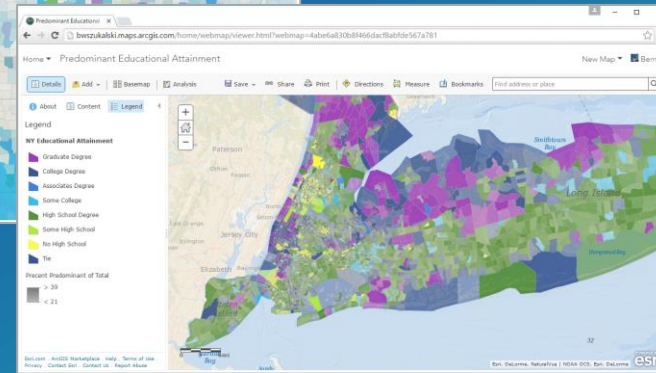
An idea or inspiration
and thinking...



Media
& Storage



Web Map(s)



Story Map

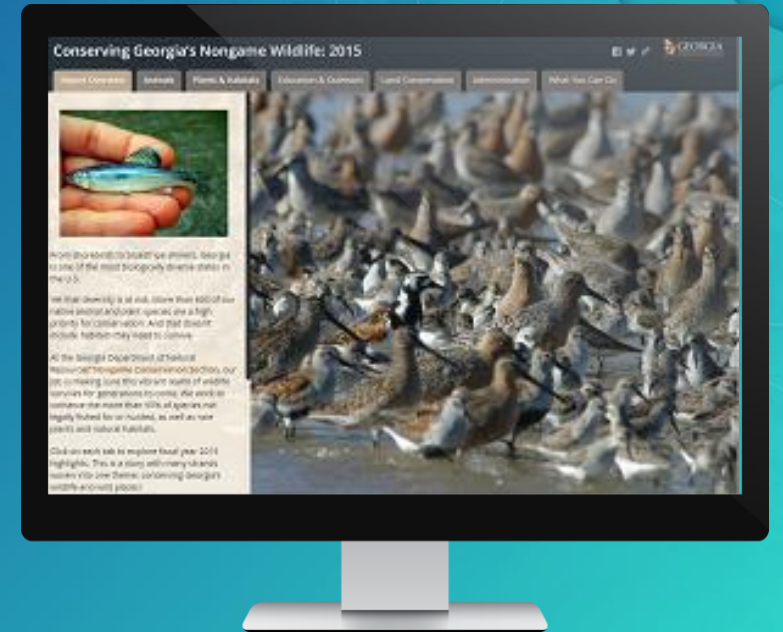
Story Maps are hosted (and updated) in the Esri cloud



1. Choose



2. Build



3. Share

Story Maps use builders (and have help)

WELCOME TO **Map Journal** Builder

Which layout do you want to use? ?



Side Panel
A layout for a text intensive story that excels at combining your photos, videos, and maps in a clear focused message.
[VIEW A LIVE EXAMPLE](#)



Floating Panel
A layout that puts your cartography in focus while allowing a transparent short form text panel to help tell the story.
[VIEW A LIVE EXAMPLE](#)

[START](#)



Help



ADD



SETTINGS



ORGANIZE



EDITS



SHARE



TIPS

By default the maps location are synchronized. Disabling synchronization allows each map to display a different location.

Synchronization ON



Synchronization OFF



To disable synchronization, go to Settings > Map Options and uncheck "Synchronize map locations".

Want more? Visit the Esri Story Maps website.

[CLOSE](#)

Story Maps have multiple layouts

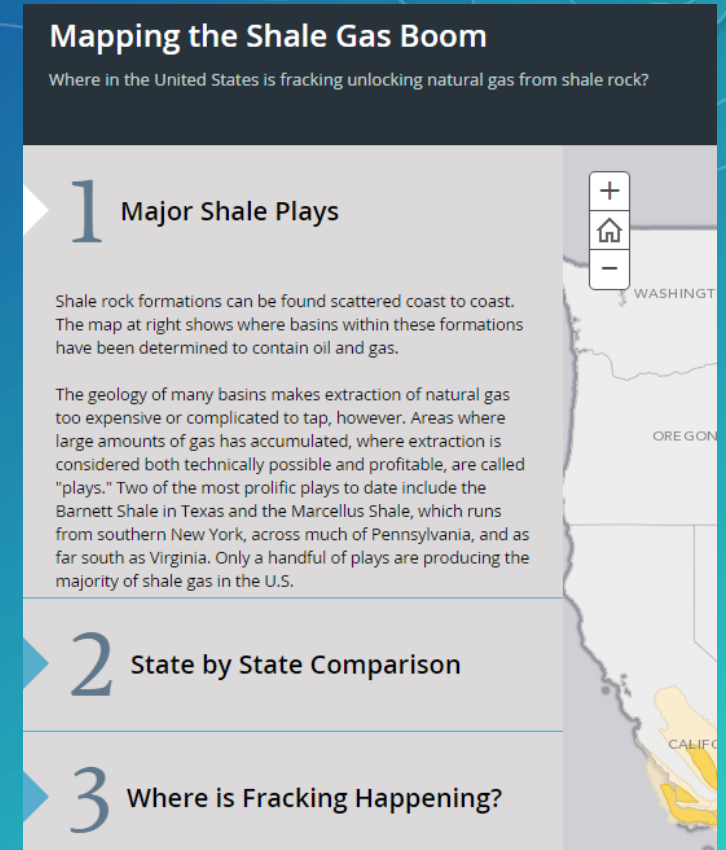
Story Map Series



Bulleted

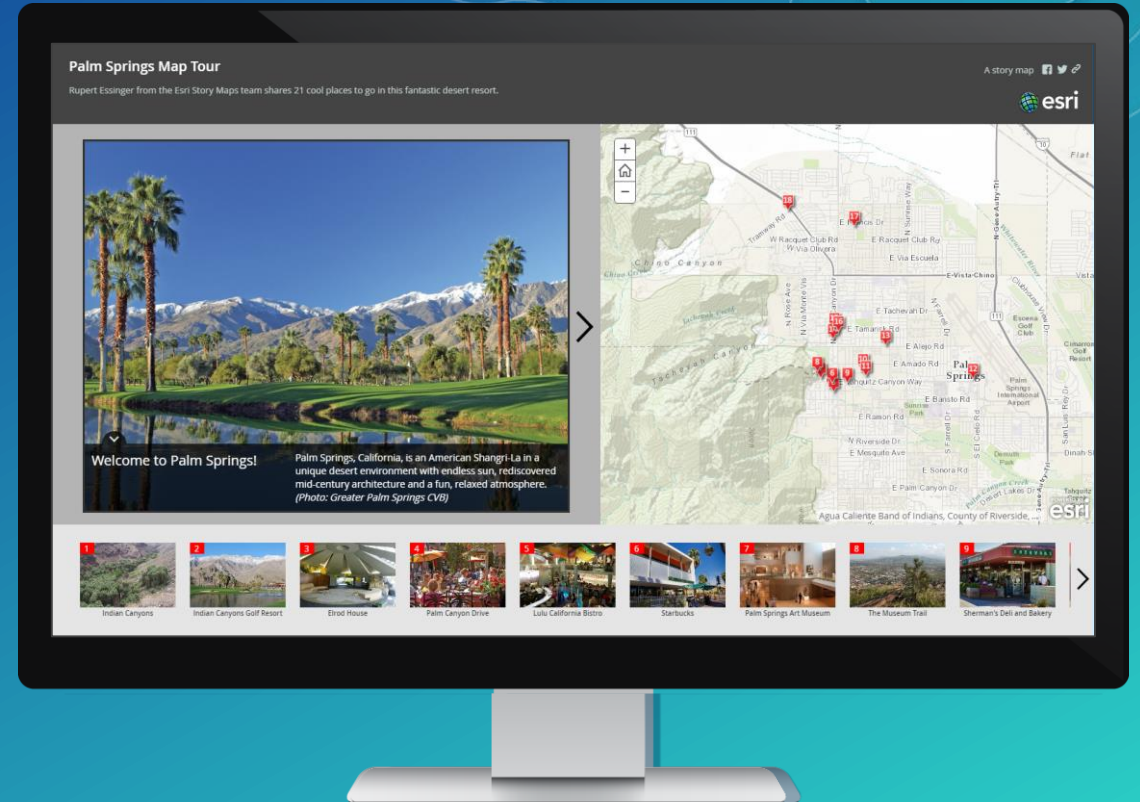
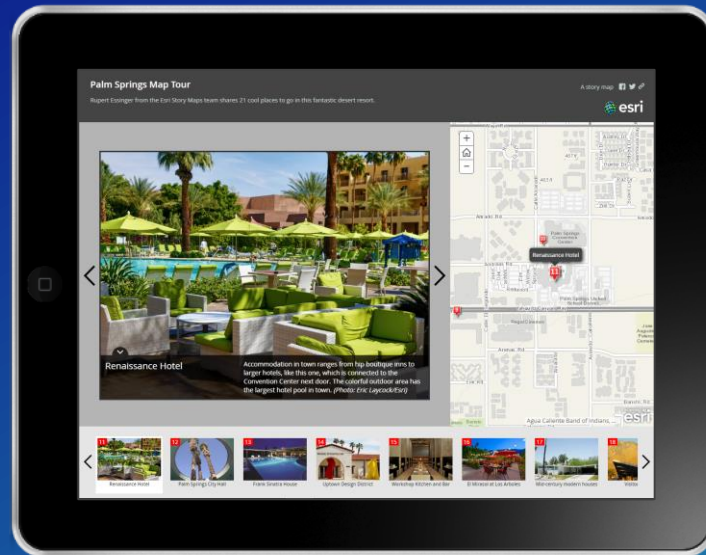


Tabbed



Side Accordion

Story Maps are responsive





Layout Examples

Story Maps can be linked

Maryland.gov Phone Directory State Agencies Online Services


MARYLAND .gov DEPARTMENT OF PLANNING

Search

f t y p ALL

HOME OUR WORK OUR PRODUCTS YOUR PART REDISTRICTING HISTORICAL TRUST DATA CENTER

Spotlight Communities



Remington Neighborhood Revitalization
Salisbury Downtown Revitalization

For more about

Sustainable Communities
Planning Coordination

Spotlight Remington ClipFeed

Some see new future for corner stores in Remington


A bill sponsored by a City

Spotlight Communities

Remington Neighborhood Revitalization

Baltimore's Remington neighborhood is undergoing rapid change. The quiet, mostly residential neighborhood in the city's north central area has seen an influx of new uses – and new residents – in the last decade.

Rehabilitation of Miller's Court has spearheaded positive changes in Remington.



Miller's Court 2009

On this page

- Remington story map
- Remington 3D fly-through
- Video: residents & developers talk
- Millers Court timeline

Between 2000 and 2010, Remington's population went up 7 percent, while Baltimore's population fell. Younger people in particular moved to Remington, with the population of Millennials jumping 55 percent in the decade.

GULF SPILL RESTORATION

Website maintained by NOAA on behalf of the Deepwater Horizon Natural Resource Damage Assessment Trustees

Home About Us How We Restore Restoration Areas Data Media & News

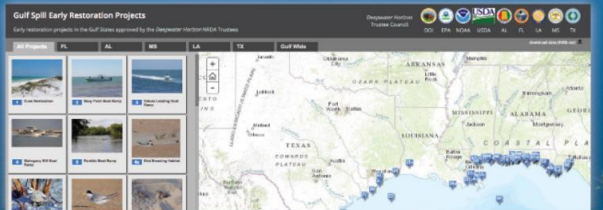
Deployment Begins on Texas Artificial Reef Projects

Learn More

Projects Near You

Explore our **interactive map** to see details on restoration projects.

View Project Details



Get the latest **news updates** from the Deepwater Horizon Trustees

Sign Up Now

Suggest a **restoration project** for consideration

Share Your Idea

View **projects submitted** for Trustee consideration

View Submissions

Story Maps can be embedded

Start receiving our award-winning magazine today! **SUBSCRIBE**

Earn your **Master of Natural Resource Stewardship** online from Colorado State University. **Join the Legacy**

Colorado State University OnlinePlus

The Nature Conservancy Magazine • Newsroom • Blogs • My Nature

Keyword Search **DONATE NOW**


Where We Work How We Work Science in Action Membership & Giving Photos & Videos About Us

Home > Where We Work > Regions > Africa > Where We Work > Ogooué: Field Notes from Gabon's Great River

Ogooué: Field Notes from Gabon's Great River

In September 2014, The Nature Conservancy and CENAREST (the Gabonese Scientific Research Center) led a scientific expedition to the Ogooué River, which is included in the Great Rivers Partnership. An international team of scientists set forth with the goal of documenting the river's biodiversity at key locations around Lastourville, in the Ogooué-Lolo province of southeastern Gabon.

When ichthyologist Brian Sidlauskas was asked to participate in the Ogooué River expedition, his immediate response was an enthusiastic "yes." With years of experience conducting research on freshwater fishes in the Americas, this was a chance to conduct field research on species he



A Story Map Journey of an Expedition to the Ogooué River

Smithsonian.com

SUBSCRIBE SMARTNEWS HISTORY SCIENCE INNOVATION ARTS & CULTURE TRAVEL AT THE SMITHSONIAN PHOTOS VIDEOS GAMES SHOP

AGE OF HUMANS HUMAN BEHAVIOR MIND & BODY OUR PLANET SPACE WILDLIFE VIDEO

Living in the ANTHROPOCENE | **THE AGE OF HUMANS**

A story ...    

We are Living in The Age of Humans

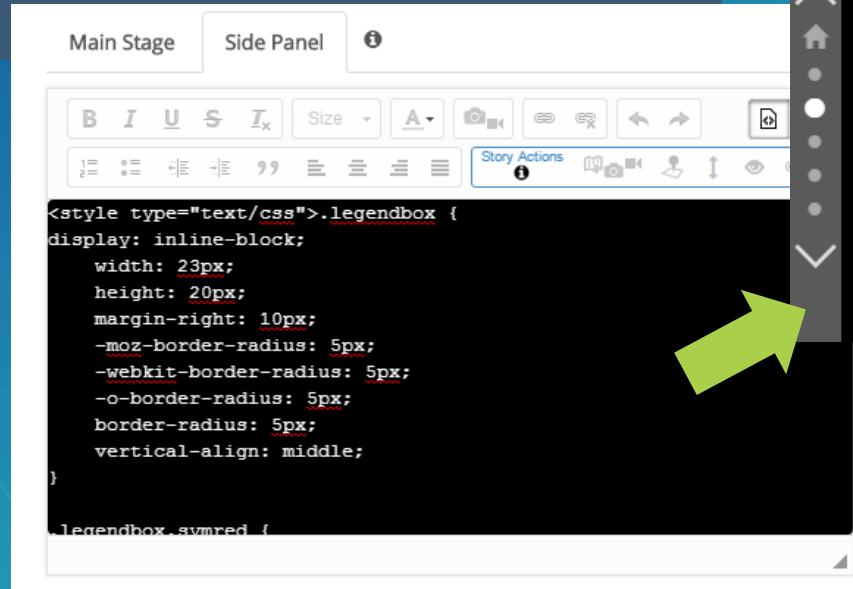
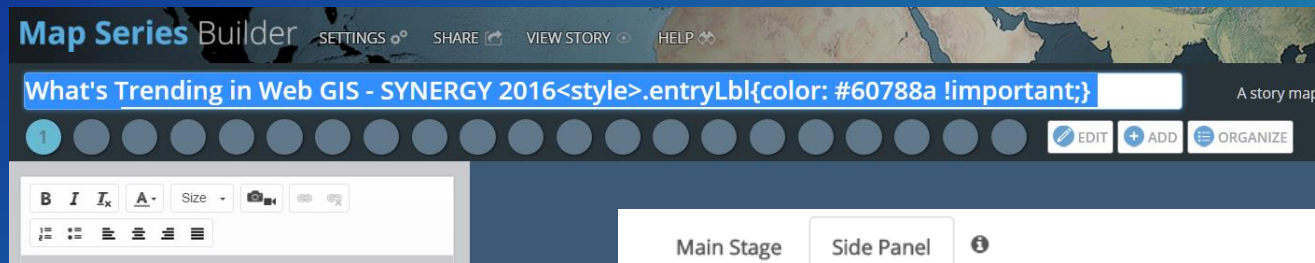
Earth is changing rapidly, and an increasing number of scientists say that humans have become the dominant force driving these changes. While the term has no formal definition, many agree that we are now living in an age shaped by human activity: the Anthropocene.

Evidence for the Anthropocene comes from



Story Maps can be customized

- CSS, HTML customization
- Style overrides can be inserted at various locations



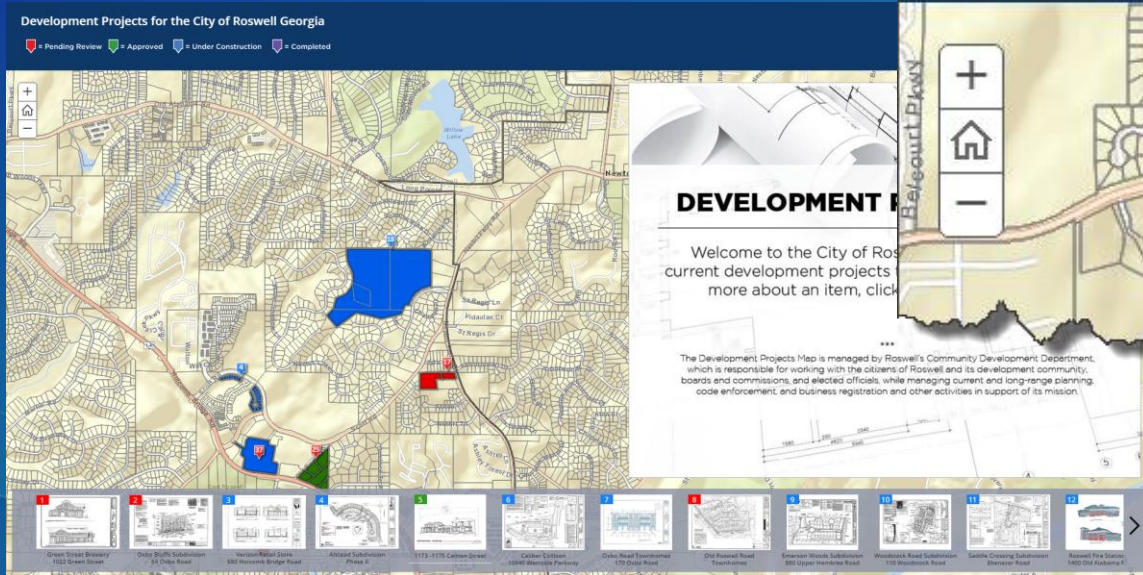
It has caused diagnostic symptoms in seven of those twelve species. The ranges of affected species can be viewed by clicking the tabs at the top of the map.

Legend

- WNS Status Confirmed
- WNS Status Suspect
- Species Range

*Endangered species **Threatened species

Example: Legend displayed in subtitle



Development Projects for the City of Roswell Georgia

 = Pending Review  = Approved  = Under Construction  = Completed



Story Map source code is available

- Download from GitHub, must be self-hosted
- Updates must be manually installed
- Developer's Corner



✓ *Recommend for special use cases only*

The screenshot shows the GitHub repository page for 'Esri / map-series-storytelling-template-js'. The repository has 29 watchers, 26 stars, and 26 forks. It includes tabs for Code, Issues (17), Pull requests (0), Projects (0), Pulse, and Graphs. The 'Releases' tab is active, showing the latest release, V1.6.0, which was released on Dec 15, 2016, by 'asizer'. The release notes indicate one major new feature: 'Image Upload', which allows authors to upload images directly from their computer to be used in the app as a mainstage image, an image in a panel, or a logo. Technical changes include updating the ArcGIS API for JavaScript to v3.19 and adding lodash in the production app and FontAwesome for the builder.

Features Explore Pricing This repository Search Sign in or Sign up

Esri / map-series-storytelling-template-js Watch 29 Star 26 Fork 26

Code Issues 17 Pull requests 0 Projects 0 Pulse Graphs

Releases Tags

Latest release

V1.6.0
asizer released this on Dec 15, 2016

This release contains one major new feature.

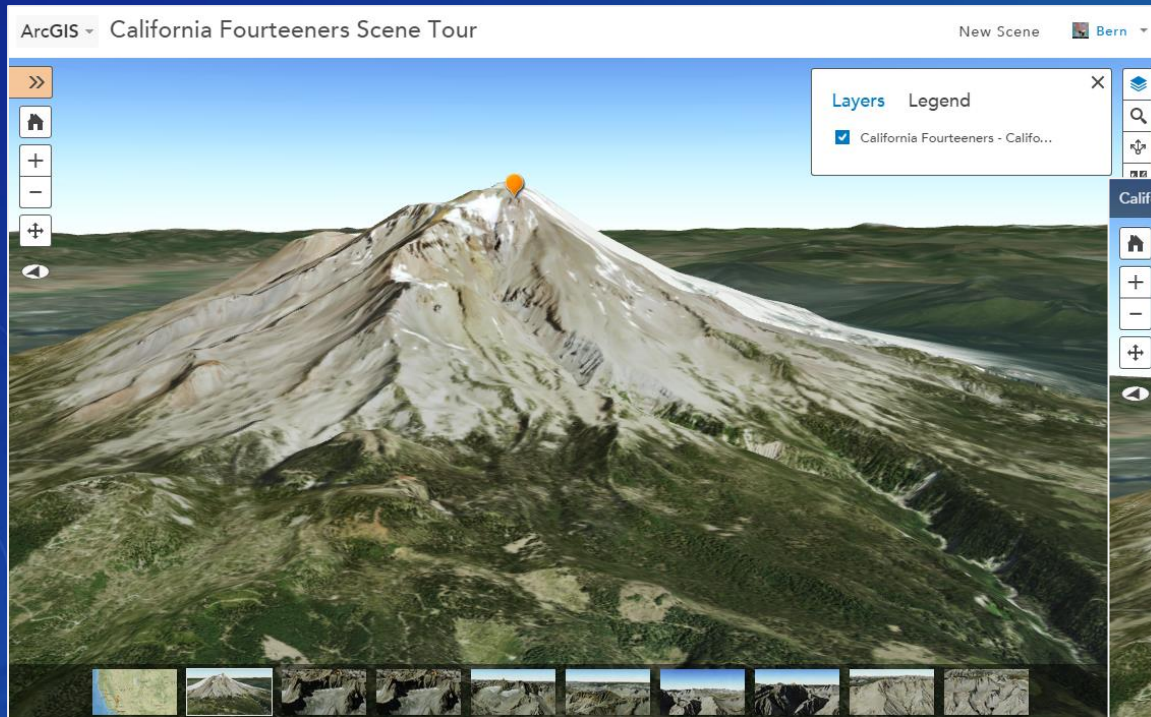
New feature:

- Image Upload. Authors can upload images directly from their computer to be used in the app as a mainstage image, an image in a panel, or a logo.

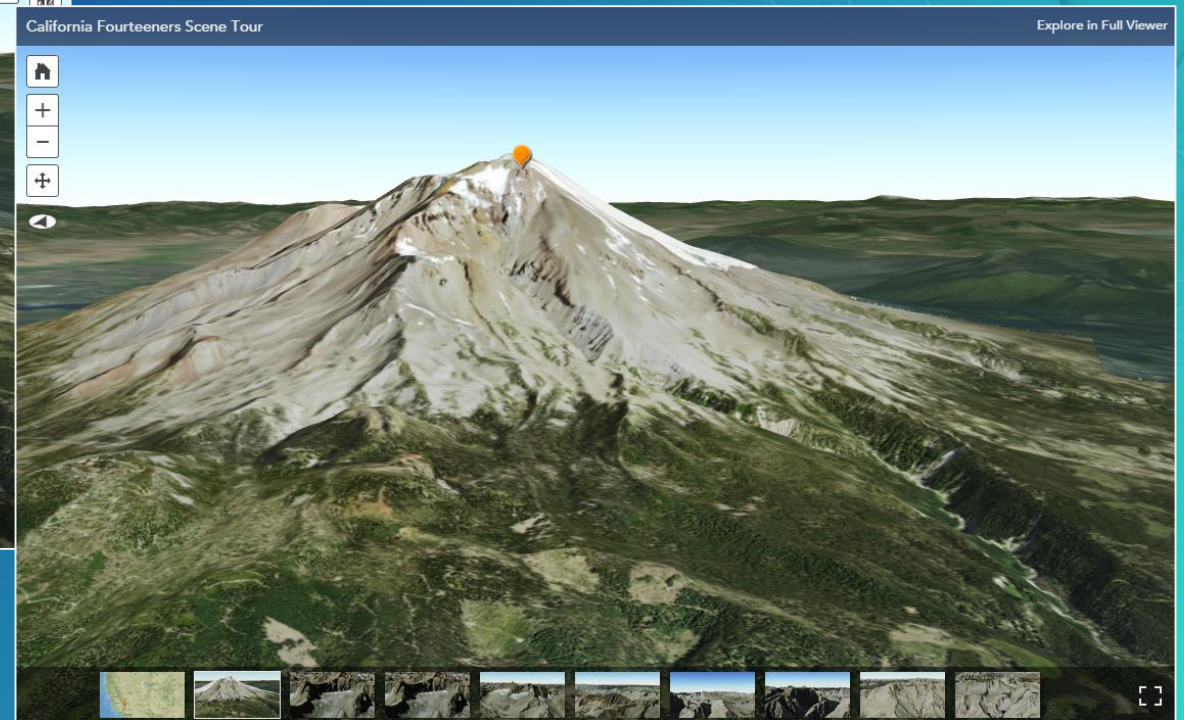
Technical changes:

- Updated ArcGIS API for JavaScript to v3.19
- Added lodash in production app, and FontAwesome for builder

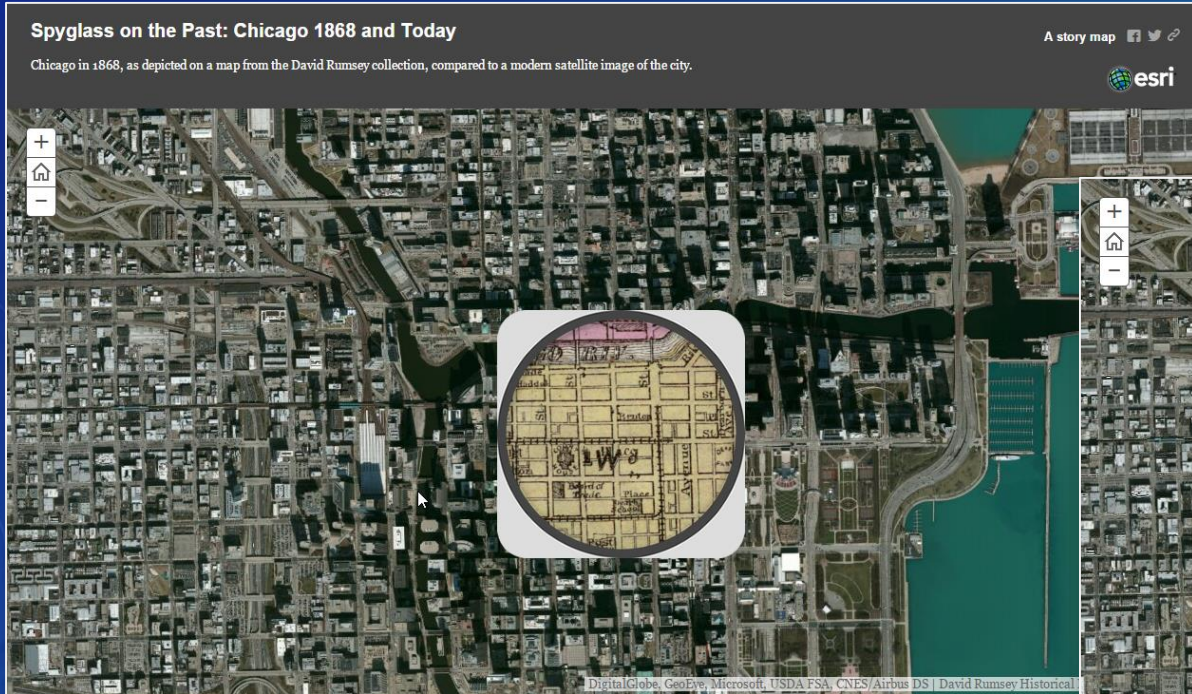
Add web scenes via URL



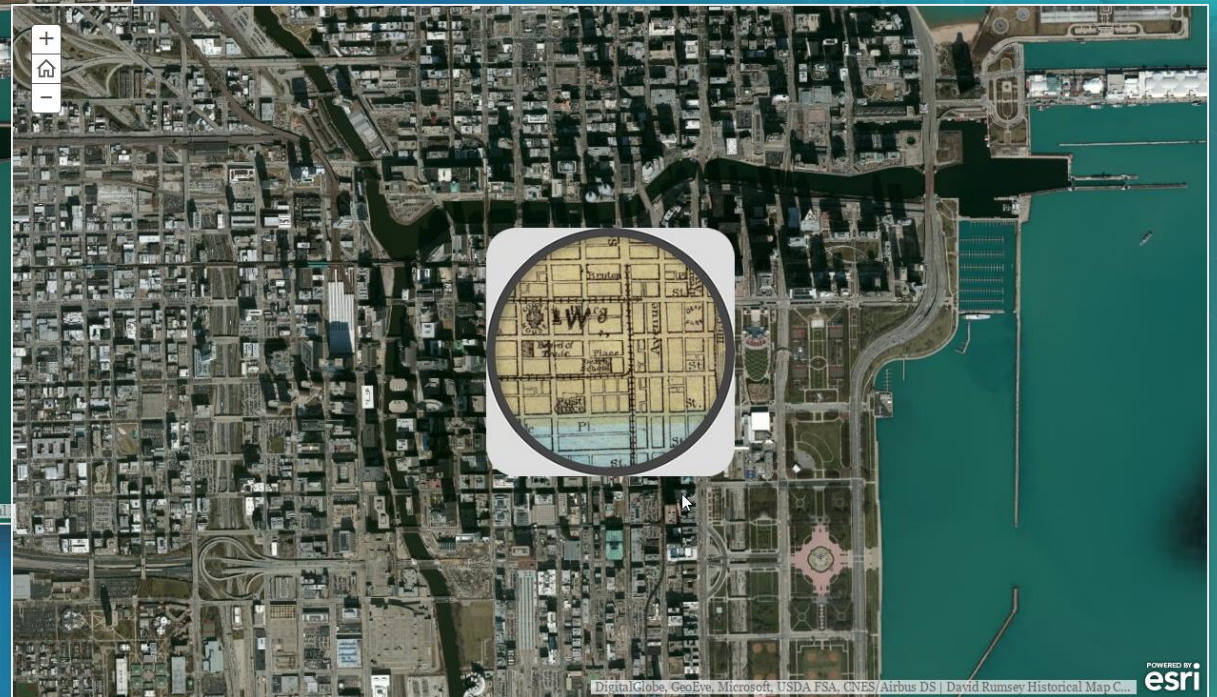
&ui=min



Minimize the UI – use &embed



&embed



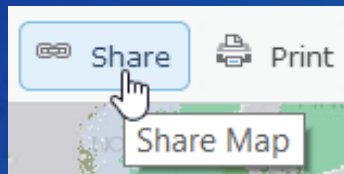
✓ Remove unwanted UI elements in configurable apps

Making Imagery Story Maps

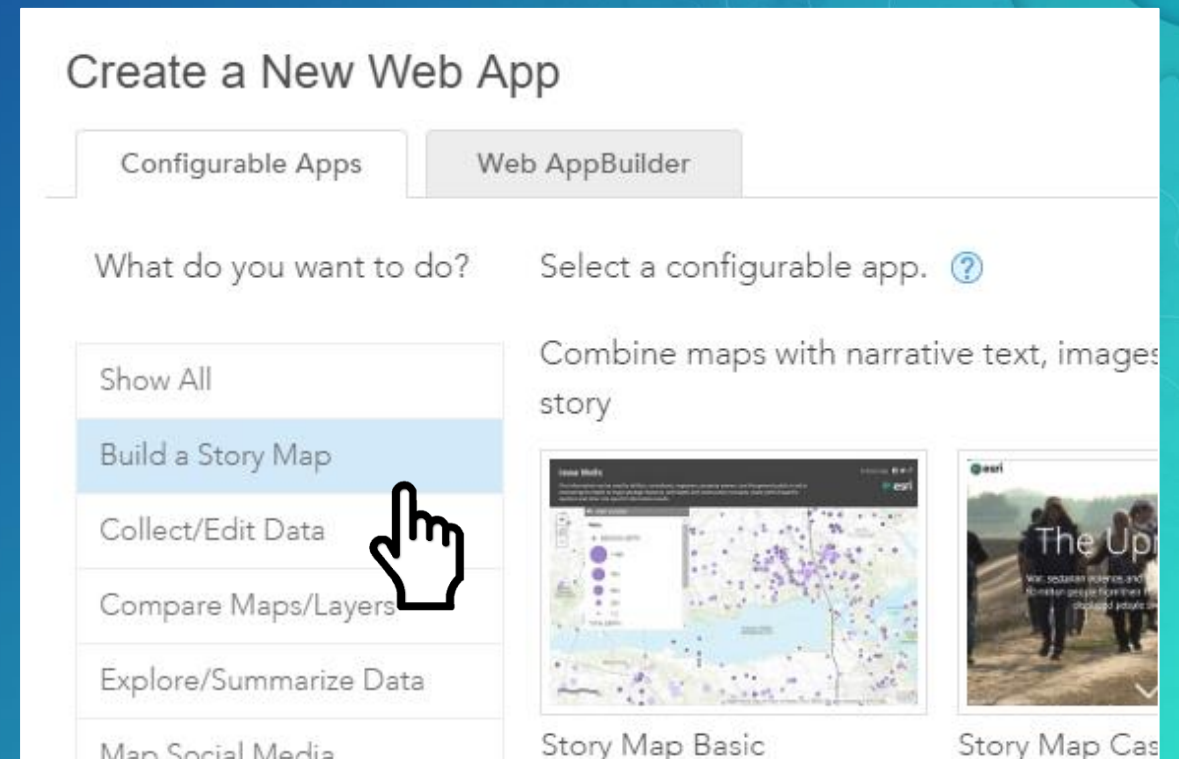


Two workflows

1. Start with a web map
2. Start at the Story Maps website



CREATE A WEB APP



Two workflows

1. Start with a web map
2. Start at the Story Maps website

Get started right away!

CREATE STORY



Story Map TourSM

This app presents a sequential, place-based narrative in the form of a series of geotagged photos and captions linked to an interactive map. It's ideal for walking tours or for a series of locations you'd like users to follow in sequence.

Features:    

[LEARN MORE](#)

[BUILD A MAP TOUR](#)

 Recommended workflow



Demonstration

Comparing Imagery

Imagery Techniques



Please Take Our Survey on the Esri Events App!

Download the Esri Events app and find your event



Select the session you attended



Scroll down to find the survey



Complete Answers and Select "Submit"





esri

THE
SCIENCE
OF
WHERE