

Web AppBuilder Imagery Widgets

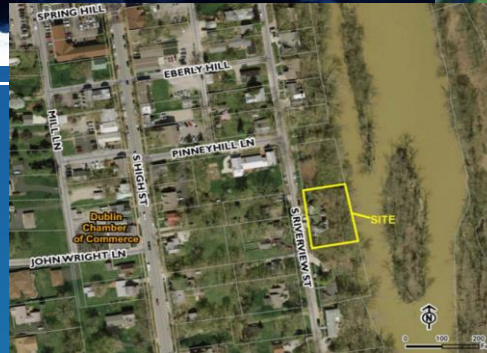
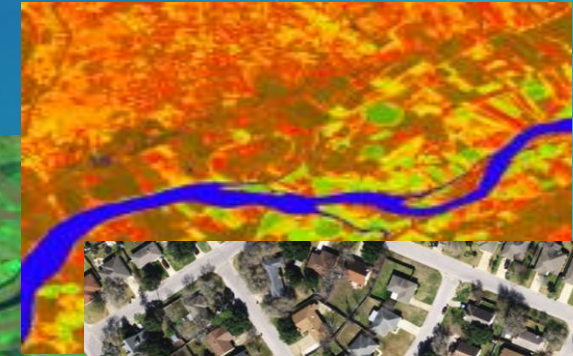
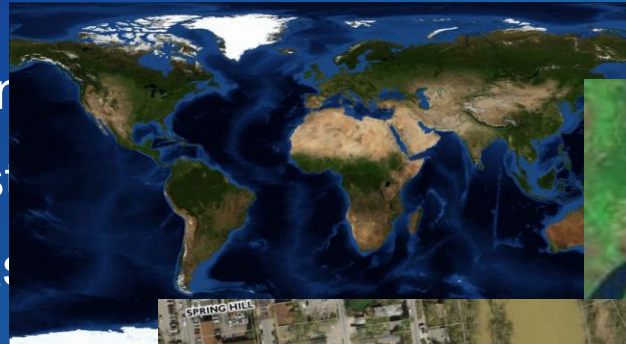
Kushagra Patel & Sangeet Mathew

What is Web AppBuilder for Image Services (WABIS)?

Subhead Here

- **Imagery is Core to GIS**

- Managing, analyzing and displaying imagery
- Working within the existing ArcGIS infrastructure
- Modular design that easily integrates with other GIS applications
- Implemented with no coding required



System Requirements

- Web AppBuilder For ArcGIS (Developer Edition)
- ArcGIS Online Account or ArcGIS Portal
- WABIS 2.0 - <https://github.com/Esri/WAB-Image-Services-Widgets>

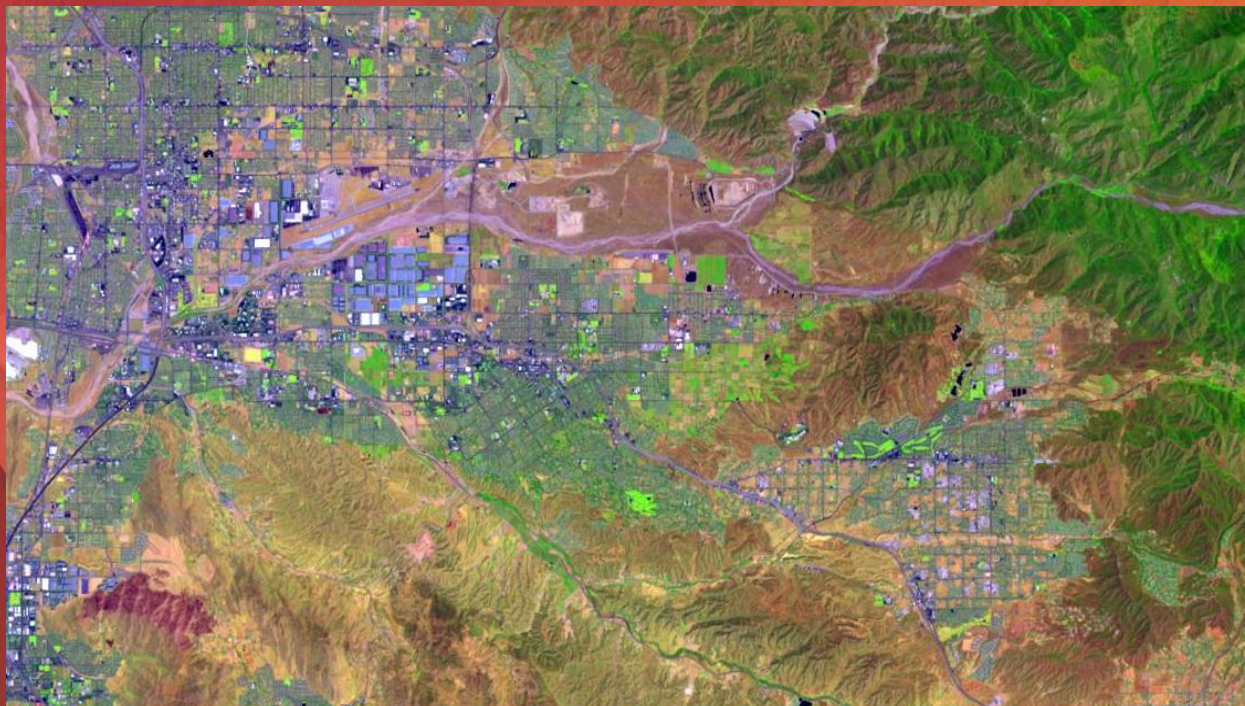
The screenshot shows the GitHub repository page for **Esri / WAB-Image-Services-Widgets**. The repository has 62 watches, 15 stars, and 5 forks. It contains 68 commits, 2 branches, 0 releases, and 5 contributors. The license is Apache-2.0. The repository is described as "WAB widgets specific to image services – WABIS". The file list includes `documentation`, `imagery_widgets`, `theme/FoldableWrapperTheme`, `LICENSE`, and `README.md`. The `README.md` file is selected, showing the title **WAB-Image Services-Widgets**.

File	Commit Message	Time Ago
<code>documentation</code>	Documentation Updated	6 months ago
<code>imagery_widgets</code>	ScatterPlot Widget Added	6 months ago
<code>theme/FoldableWrapperTheme</code>	Widgets Updated	7 months ago
<code>LICENSE</code>	Updated	a year ago
<code>README.md</code>	Deleted tags / will use topics	3 months ago

Widgets

Subhead Here

- IS ImageSelector
- IS ChangeDetection
- IS Compare
- IS Export
- IS DisplayOrder
- IS DisplayParameters
- IS Layers
- IS Scatterplot
- IS Profile
- IS Renderer
- IS ImageDate

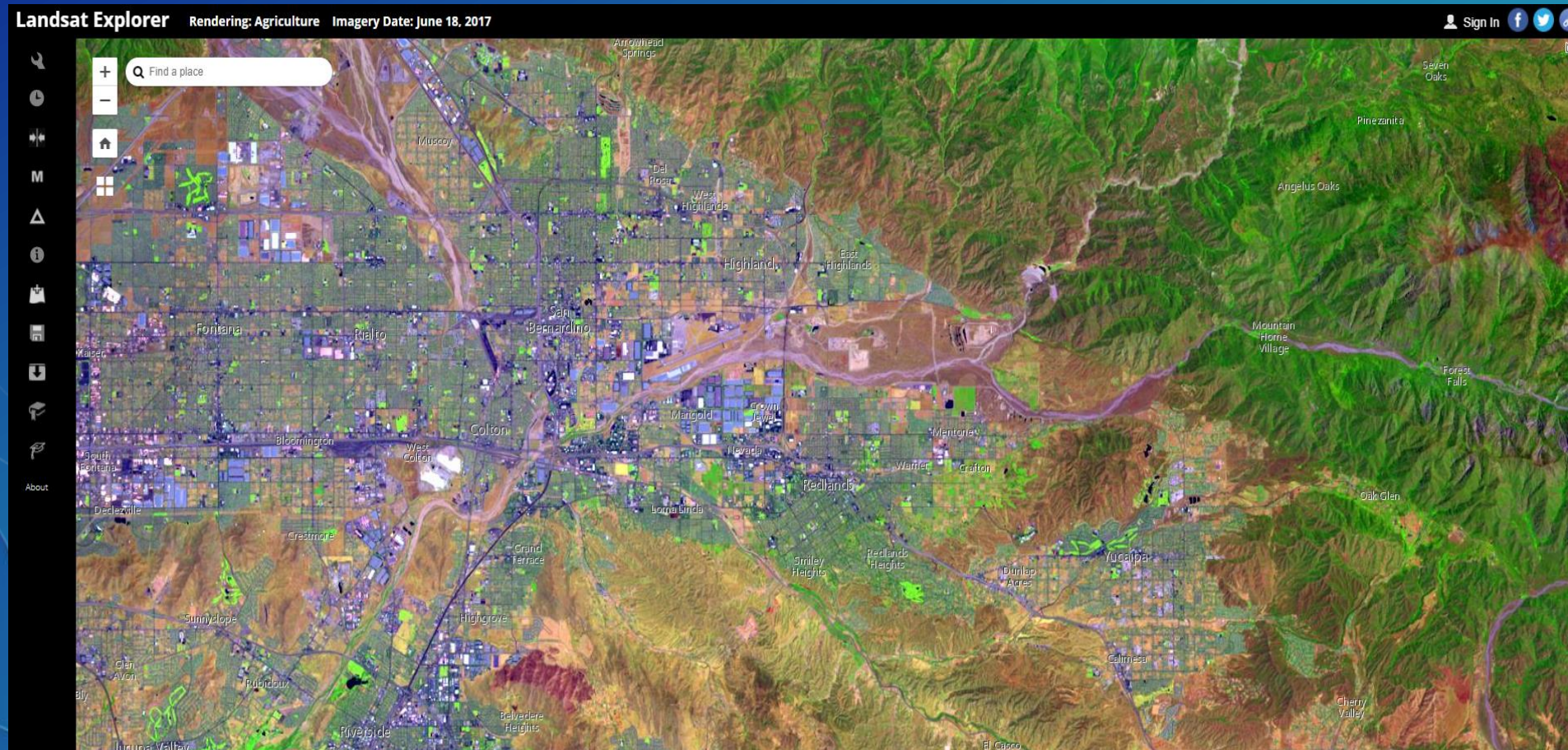


WABIS Widgets Demo

Supporting Text

Landsat Explorer

- <http://landsatexplorer.s3-website-us-west-2.amazonaws.com/>



Road Ahead

- IS Mask
- IS Change Detection
- Oriented Imagery
- Many more ...

Reference

Text goes here



esri

THE
SCIENCE
OF
WHERE

Headline Here

Text goes here

Section Header

SUBHEAD INFORMATION

Which Font is Best For Your Presentation?

Avenir Next

If you are the sole presenter and **will not distribute your PowerPoint presentation to others outside of Esri** and will only be using your own Esri computer for presenting, please use the new font Avenir Next LT Pro.

See instructions on the following slide to see how to use this new font.



Use Avenir Next if ...

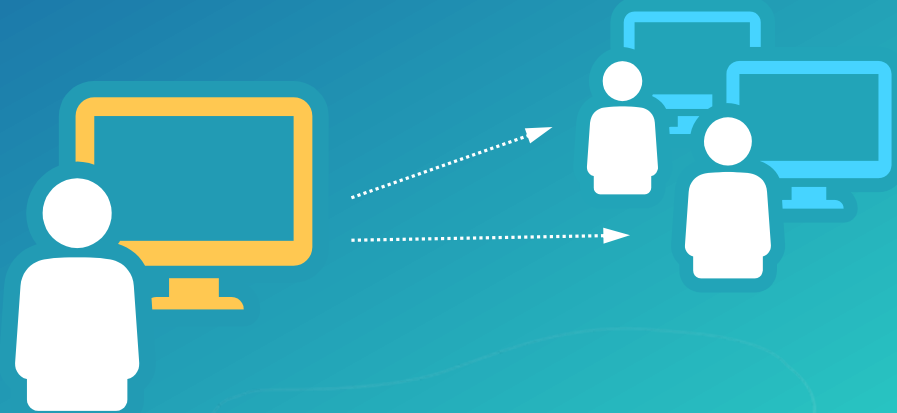
Sole Presenter

Single computer used for presentation

Arial

If you will be distributing your PowerPoint presentation to **others outside of Esri**, or using various computers to present please use Arial.

Using Arial gives your PowerPoint presentation the flexibility to be used by many people on various machines without the risk of font compatibility and changing the look of your layout.



Use Arial if...

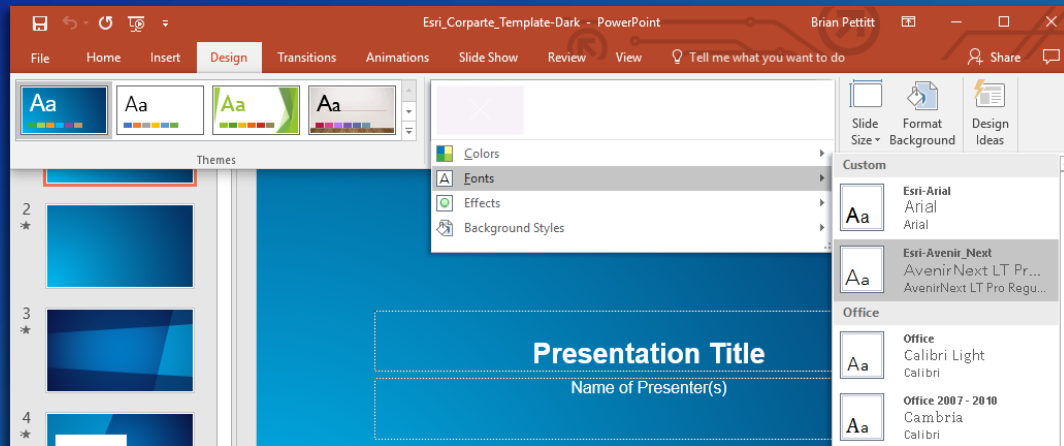
Multiple Users / Presentation Distributed to others

Presentation used on multiple computers

How to Change Your Theme Fonts to Avenir Next

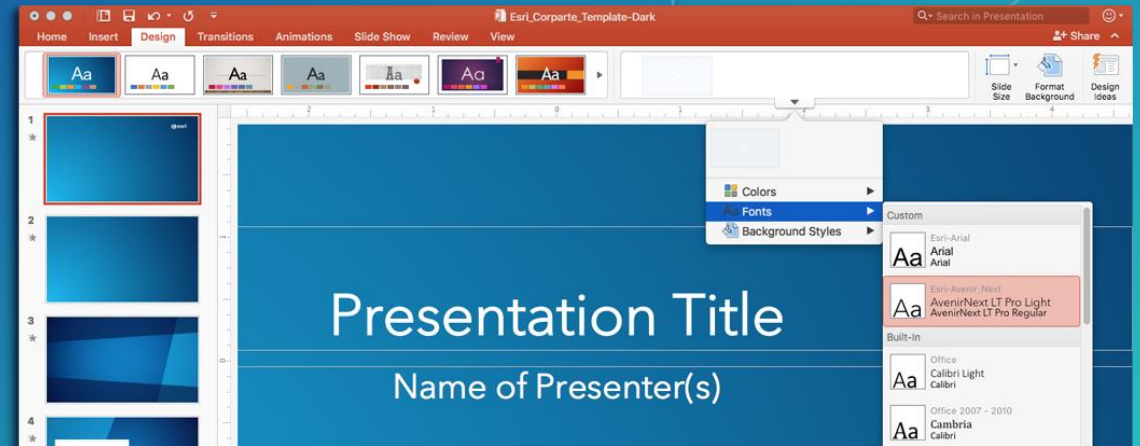
Windows

Select: Design
Variants (arrow)
Fonts > Esri-Avenir Next

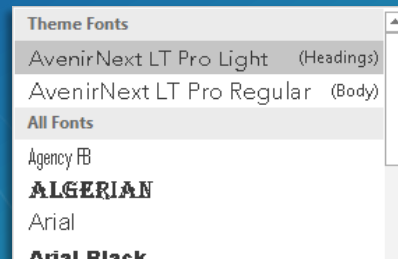


Mac

Select: Design
Variants (arrow)
Fonts > Esri-Avenir Next



What if my
fonts don't
change?



*If the text boxes on your slides are not using
(Heading) or (Body) fonts from the Theme Fonts
section, they will not update correctly.
You will have to replace them manually.*

How to Test if you're using Avenir Next

If you have Avenir Next installed,
the two Qs will match.



Picture



Live Text

Did you know?

To quickly update any current presentation

Copy and paste your slides from your **current** deck into the **newest** template. The title and ending logo slide will update automatically.


For More Templates, Sample Files, and Icons See

<https://compass.esri.com/resources/presentations/Pages/Main.aspx>

Videos not working?

For video in PowerPoint, animated GIF is recommended. AVI and WMV (native PC files) will work best on a PC platform. H.264 MP4 will work only on PowerPoint 2013 and later.

Aspect Ratio Test



If this shape does not appear as
a perfect circle, adjust the aspect
ratio of your display until it does.

Try the resolution 1920x1080 for
16:9 displays.