

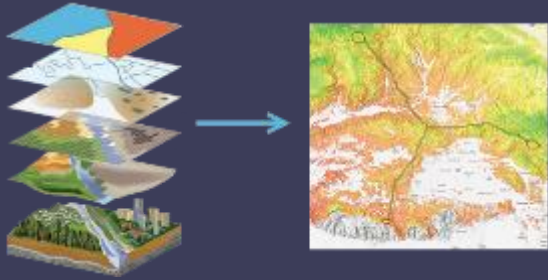
# ArcGIS Pipeline Referencing An Introduction

Anjali Bhangay

William Isley

# Pipeline Referencing Overview

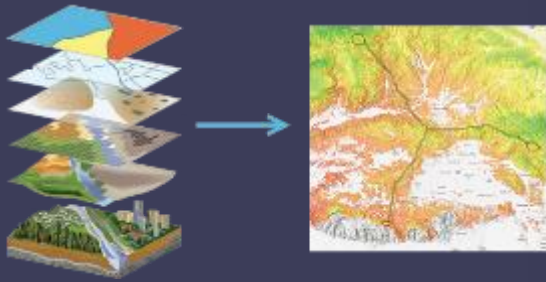
## Information Model



- Routes
- Events
- Intersections

# Pipeline Referencing Overview

## Information Model



- Routes
- Events
- Intersections

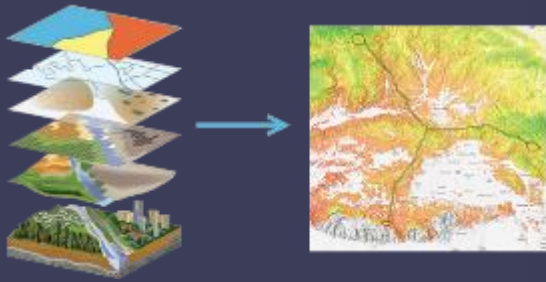
## ArcGIS Pro



- LRS network editing
- LRS management
- Geoprocessing

# Pipeline Referencing Overview

# Information Model



- Routes
- Events
- Intersections

# ArcGIS Pro



- LRS network editing
- LRS management
- Geoprocessing

# ArcGIS Enterprise

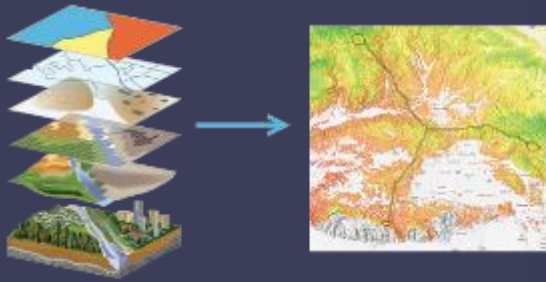
Analysis Pipelines Enhancing Search Web Applications	
<b>Global variables</b> Global variables include variables available to all jobs.	<b>Variable events</b> Variable events include events at the pipeline or stage level (events and their context).
<b>Special views of source</b> Special views of source include: <ul style="list-style-type: none"> <li>Stage view</li> <li>Stage view</li> <li>Stage view</li> </ul>	<b>Scoring queries of source</b> Scoring queries of source include: <ul style="list-style-type: none"> <li>Stage view</li> <li>Stage view</li> <li>Stage view</li> </ul>
<b>Stage view of source</b> Stage view of source includes: <ul style="list-style-type: none"> <li>Stage view</li> <li>Stage view</li> <li>Stage view</li> </ul>	<b>Analysis view of source</b> Analysis view of source includes: <ul style="list-style-type: none"> <li>Stage view</li> <li>Stage view</li> <li>Stage view</li> </ul>
<b>Stage view of source</b> Stage view of source includes: <ul style="list-style-type: none"> <li>Stage view</li> <li>Stage view</li> <li>Stage view</li> </ul>	<b>Stage view of source</b> Stage view of source includes: <ul style="list-style-type: none"> <li>Stage view</li> <li>Stage view</li> <li>Stage view</li> </ul>

- LRS web services
- Developer API samples



# Pipeline Referencing Overview

## Information Model



- Routes
- Events
- Intersections

## ArcGIS Pro



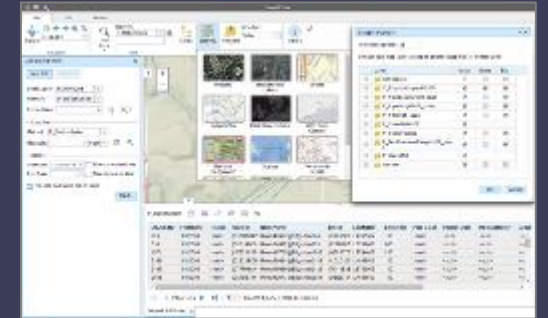
- LRS network editing
- LRS management
- Geoprocessing

## ArcGIS Enterprise



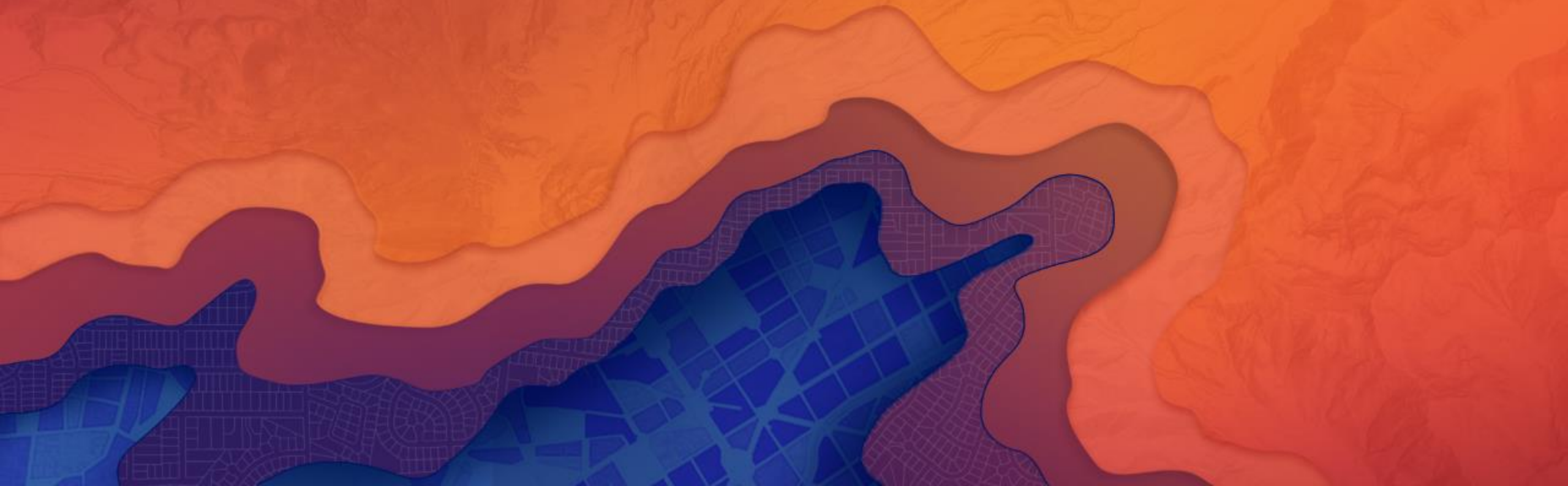
- LRS web services
- Developer API samples

## Web



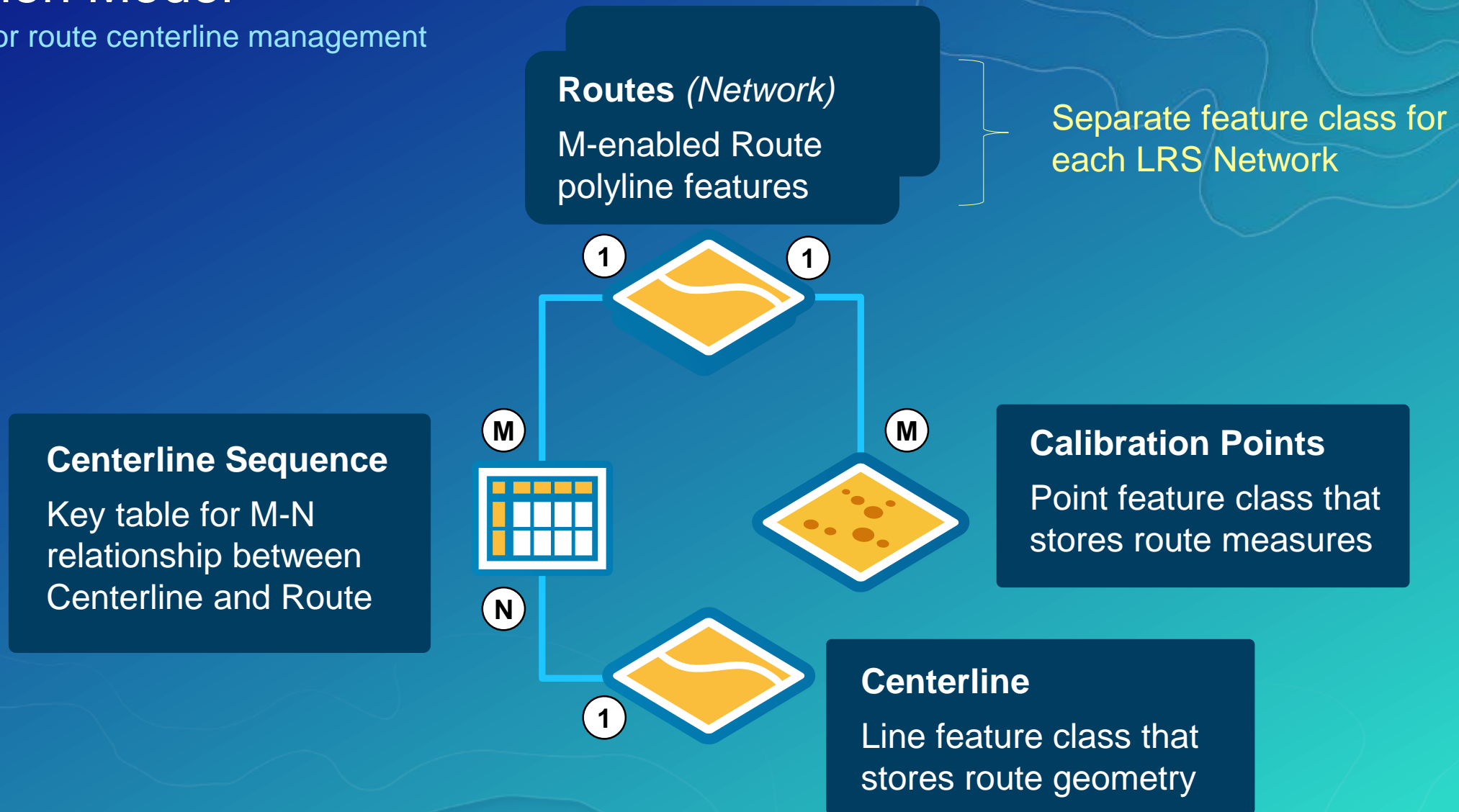
- Event editing
- Event query
- Event QC

# Information Model



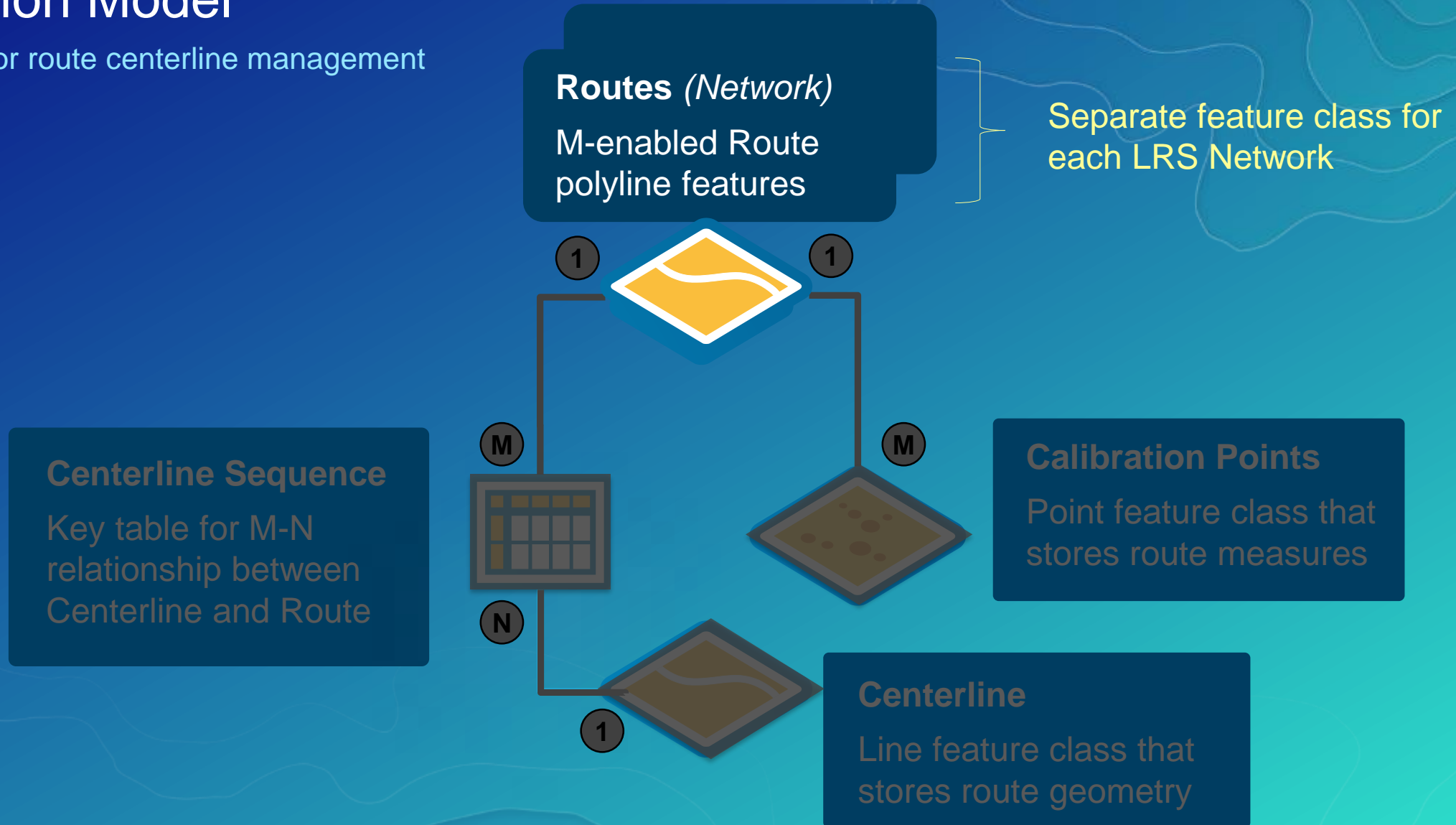
# Location Model

Schema for route centerline management



# Location Model

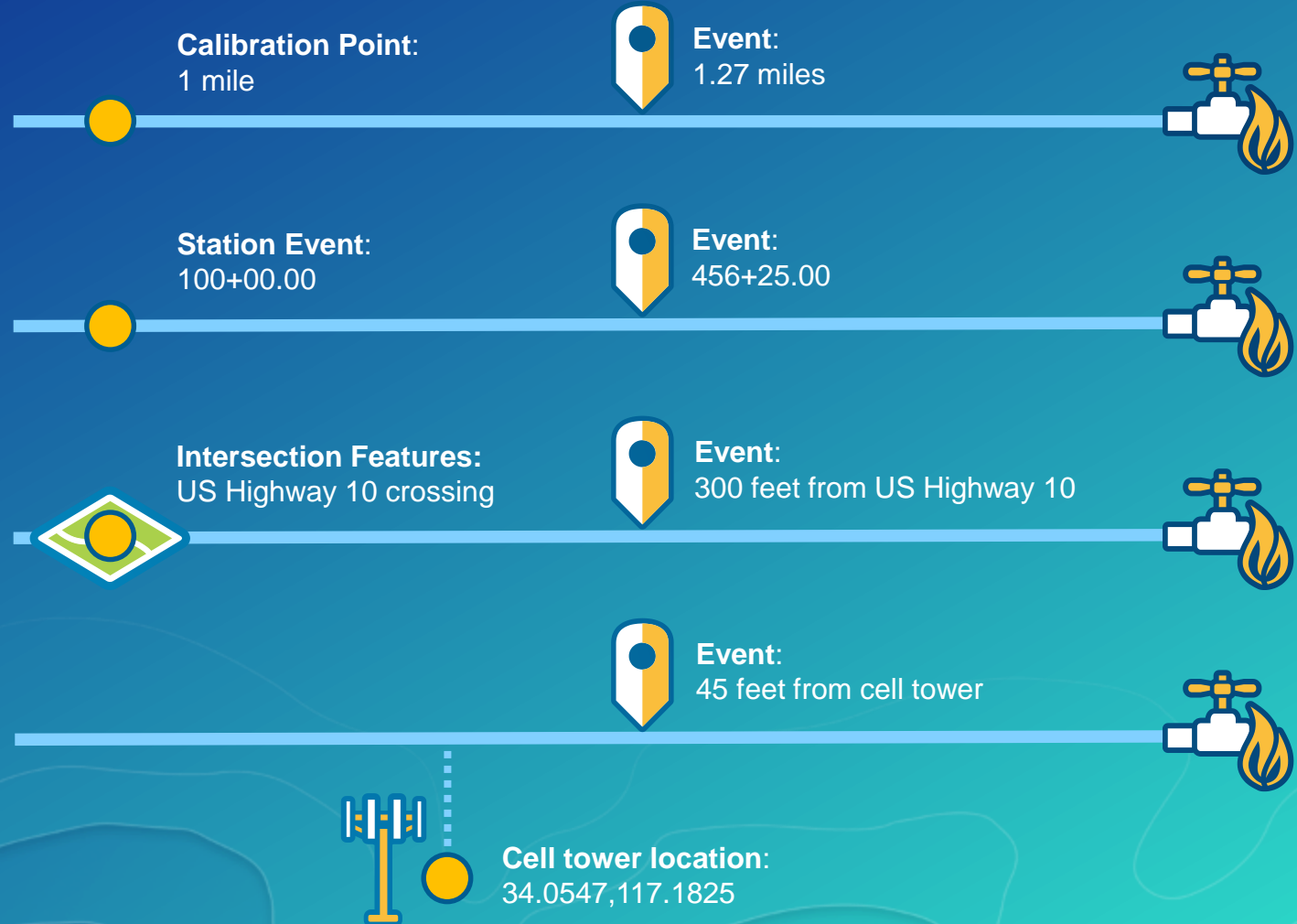
Schema for route centerline management



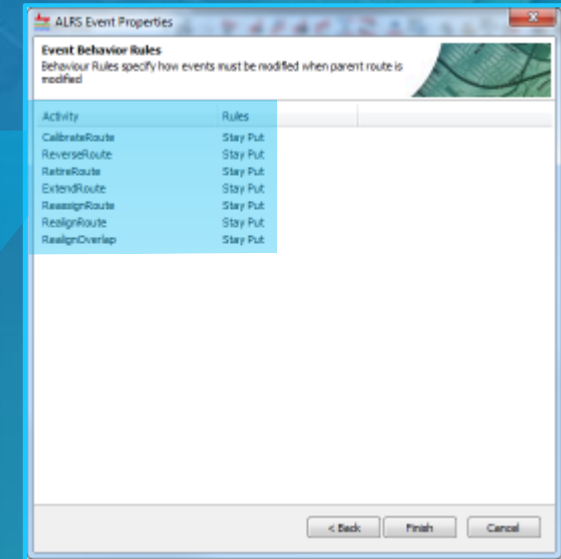
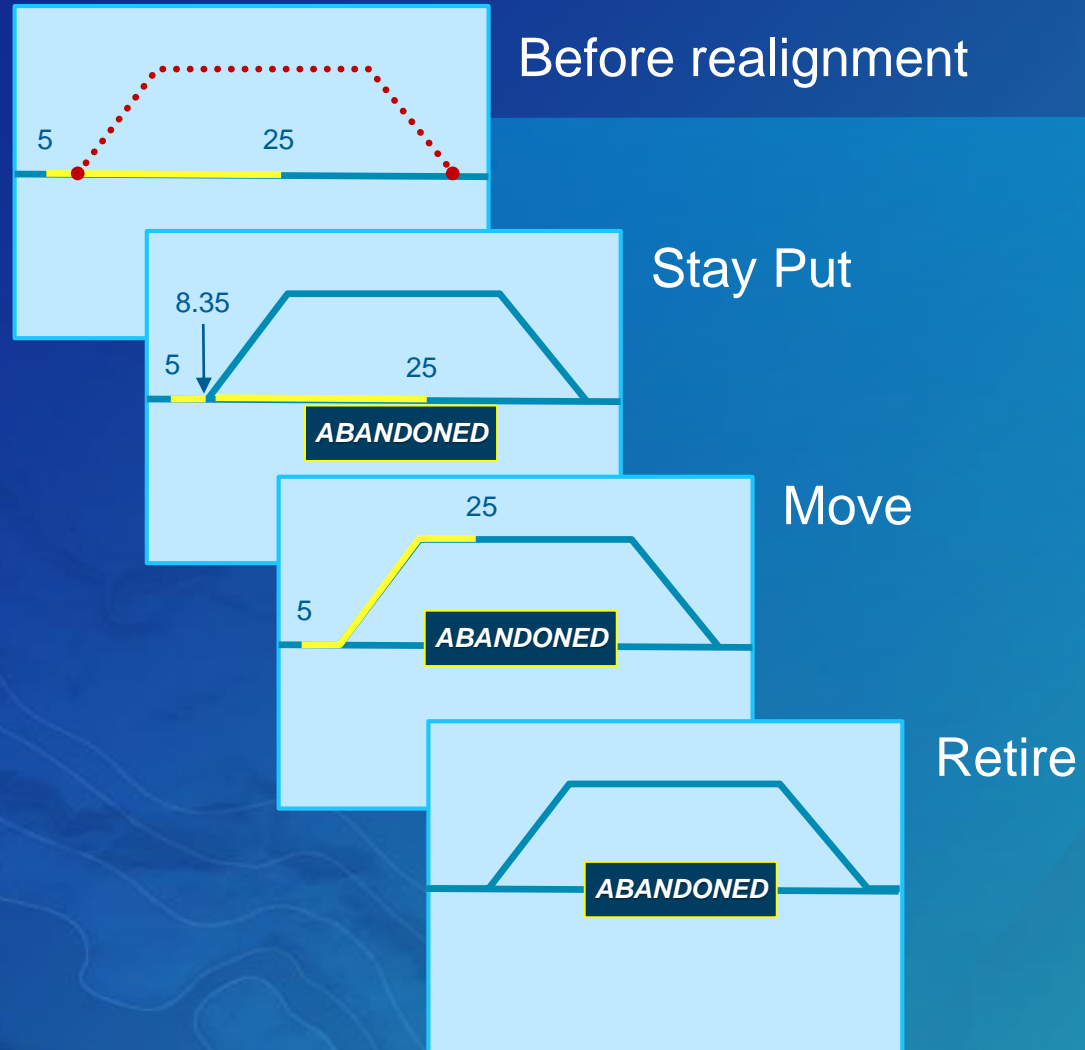


# Event Location Methods

- Route and measure
- Stationing
- Referent and offset
  - Intersections
  - Events
  - Features
- Coordinates and offset

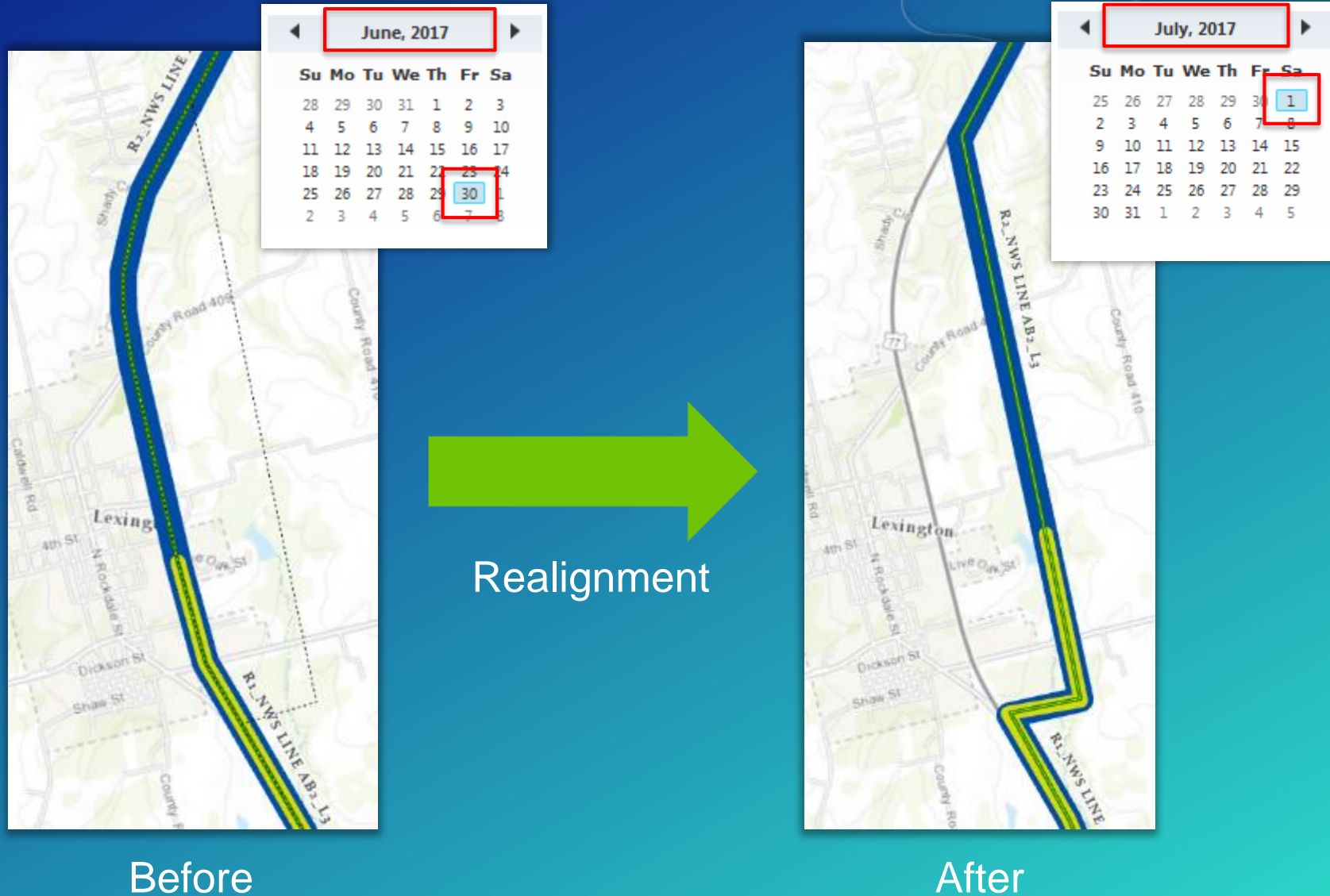


# Event Measure Behaviors

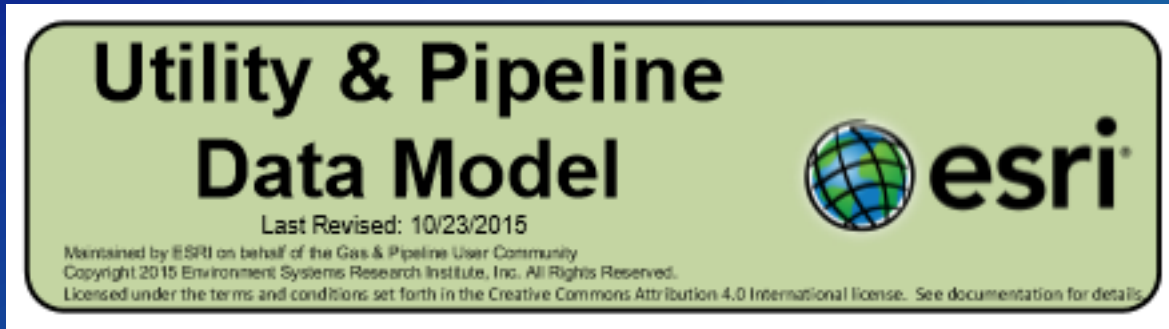


When the LRS routes are edited, measure behavior rules can be applied to events.

# Time Aware Model



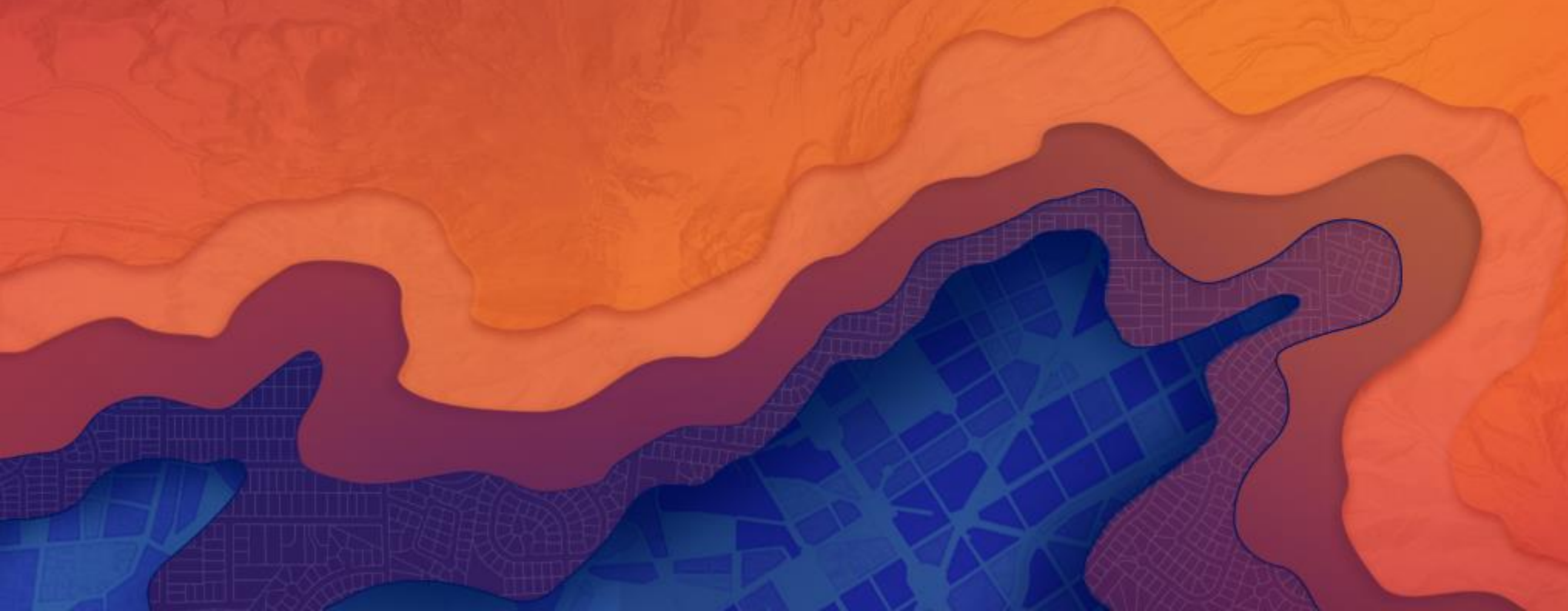
# Industry Data Models



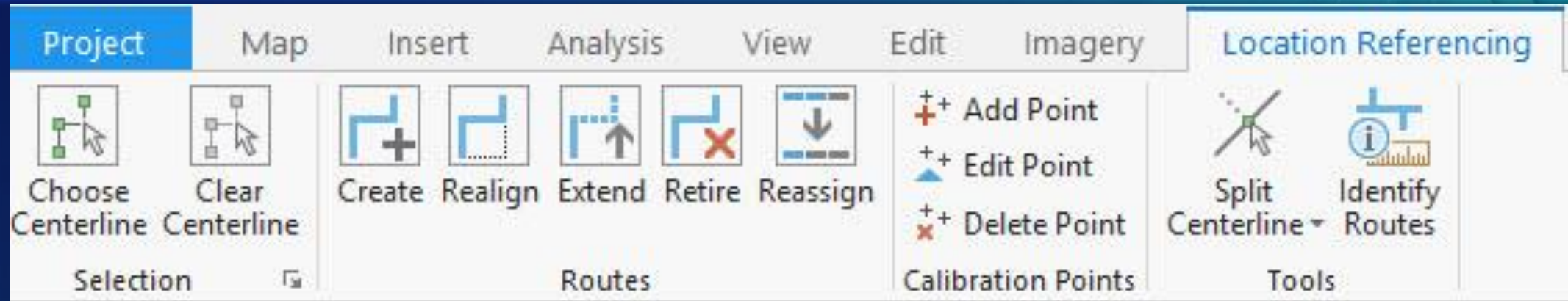
or any schema that implements the location model.



# Platform Components



# ArcGIS Pro Ribbon Toolbar



Route, calibration point, and centerline editing.

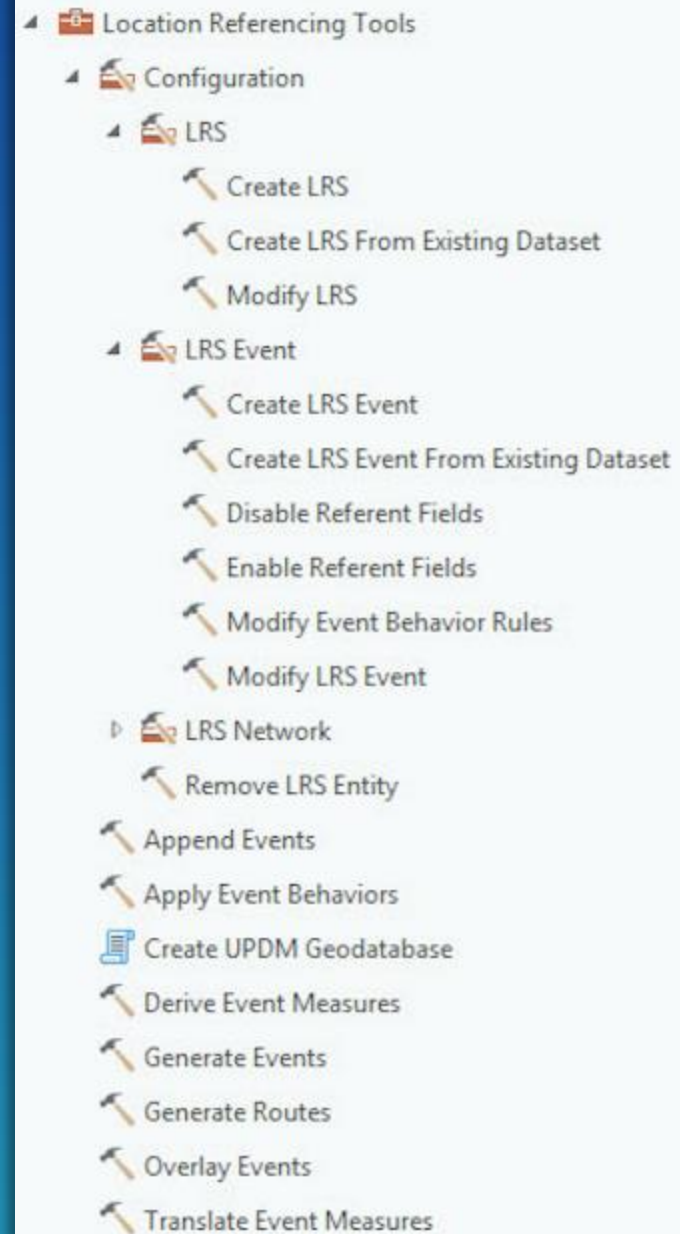
# Geoprocessing Tools

- **Modeling**

- **Loading**

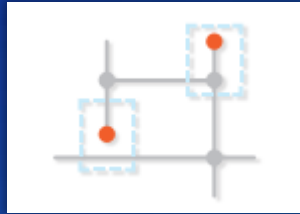
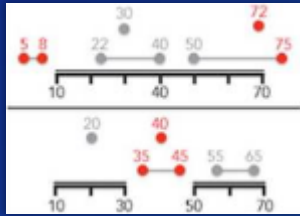
- **Transformations**

- Event Measure Behaviors
- Dynamic Segmentation
- Measure Translation





# Quality Control with Data Reviewer



FEATURE CLASS		SCALE
OID	SCALE	
1	10,000	SCALE 20,000 30,000
2	20,000	
3	10,000	
4	30,000	

- **Detect measure based errors**  
Event measure gaps, overlaps, invalid measures, Non-monotonic or routes that aren't calibrated...
- **Detect spatial errors**  
Dangles and overshoots (connectivity), self intersection...
- **Detect mismatches (SQL checks)**  
Invalid combinations of construction materials and operation pressures, event orphans...



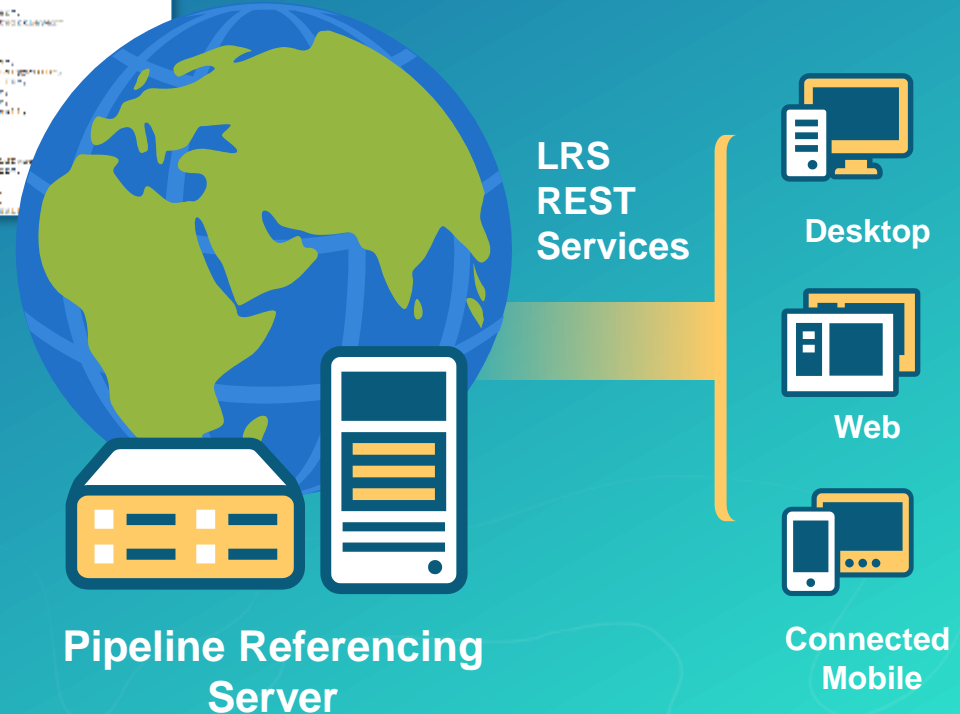
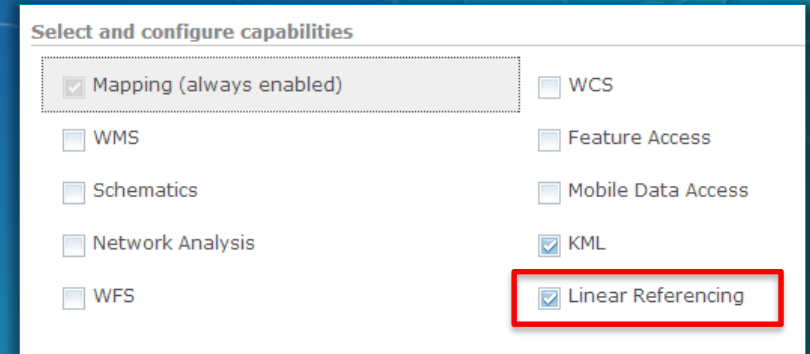
# Linear Referencing for ArcGIS Enterprise

- **GIS Server**

- Mapping, Query, Geoprocessing, ...

- **Pipeline Referencing Server**

- Event editing
- Coordinate to measures
- Measure to coordinate
- Query attribute sets
- Check events (*gaps, overlaps, invalid measures*)
- Measure translation



# Event Editor

- **Editing**

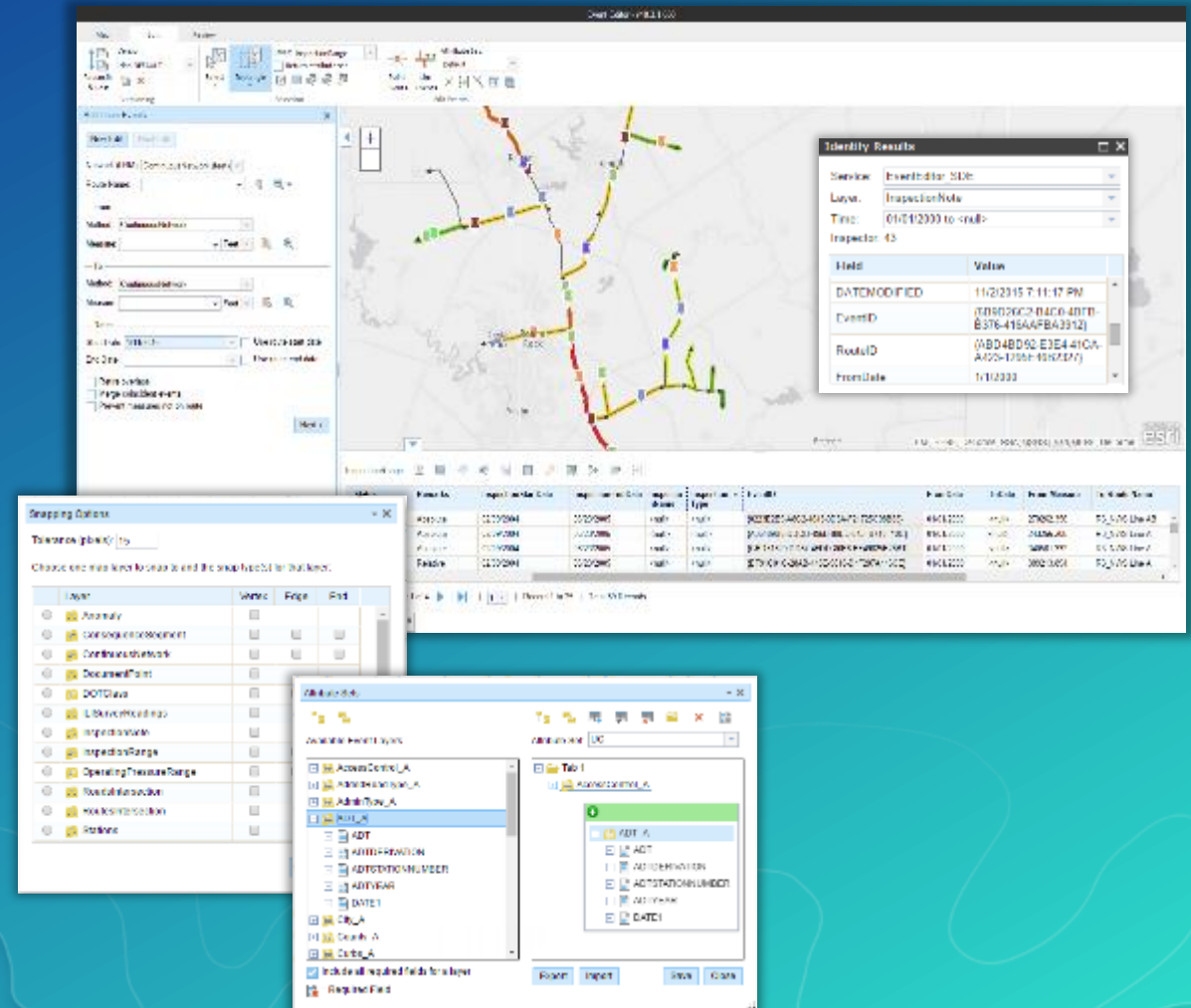
- Lines and Points events
- Tabular selection results
- Attribute set results

- **Selection**

- Select by route, attribute, geometry, proximity
- Single layer results or attribute sets

- **Error Checking**

- Gaps, overlaps, invalid measures
- Data Reviewer batch checks



# Enough slides...

Let's see some demos

# Pipeline Referencing Roadmap

Future release themes subject to change



First Release

10.5

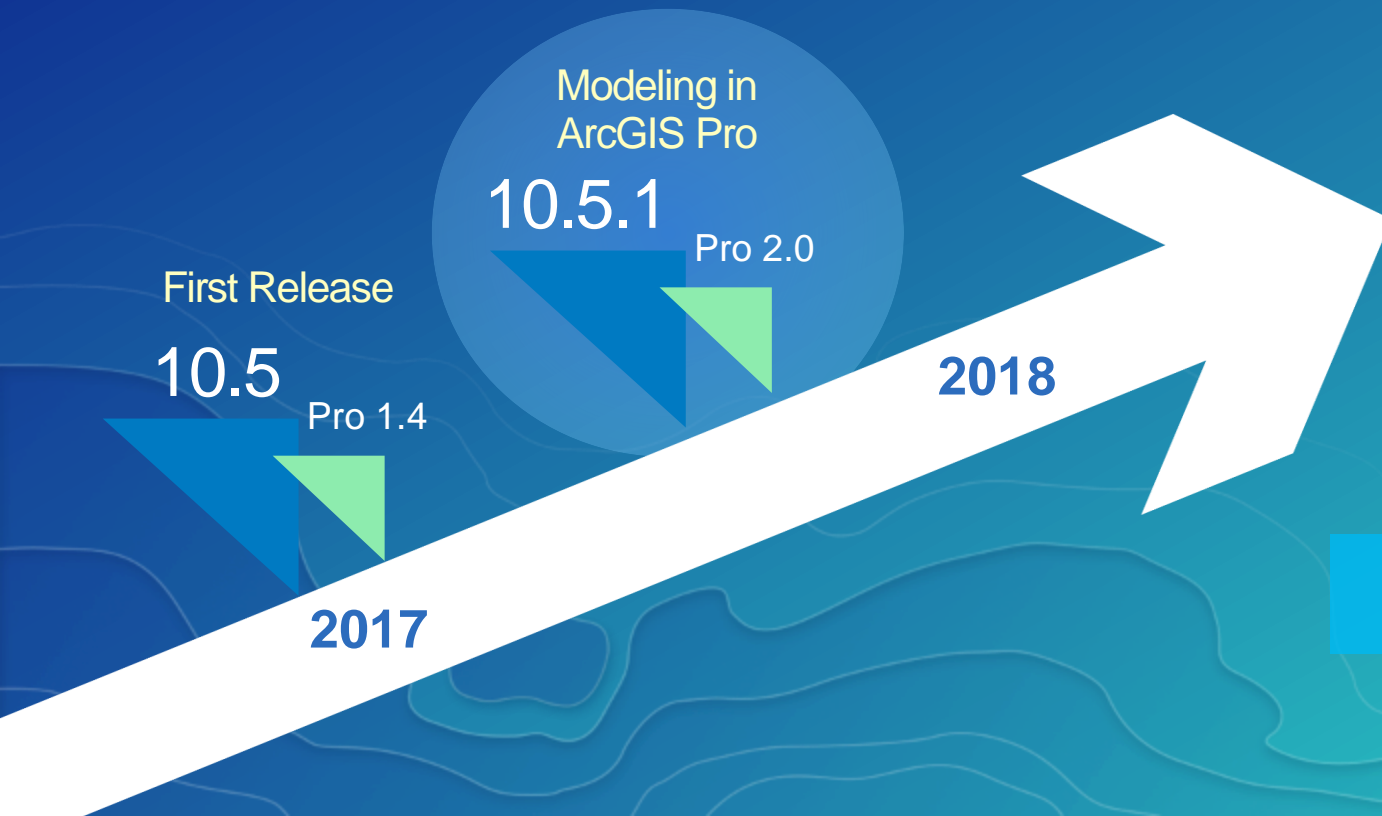
Pro 1.4

ArcGIS Release Timeline



# Pipeline Referencing Roadmap

Future release themes subject to change

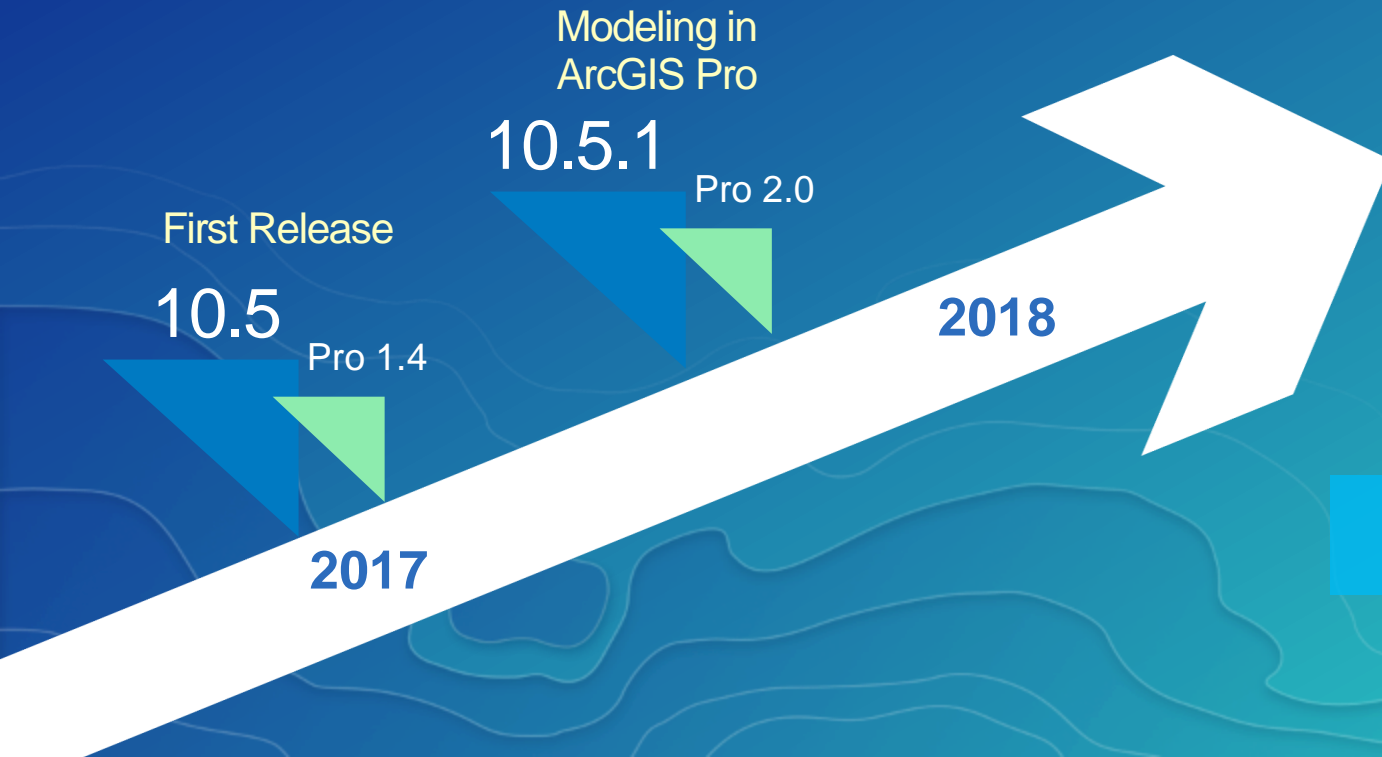


ArcGIS Release Timeline

# Pipeline Referencing Roadmap

Future release themes subject to change

- **REST-based Network Editing**
- **Utility Network Integration**
- **Conflict Prevention**
- **Modeling Enhancements to ArcGIS Pro**

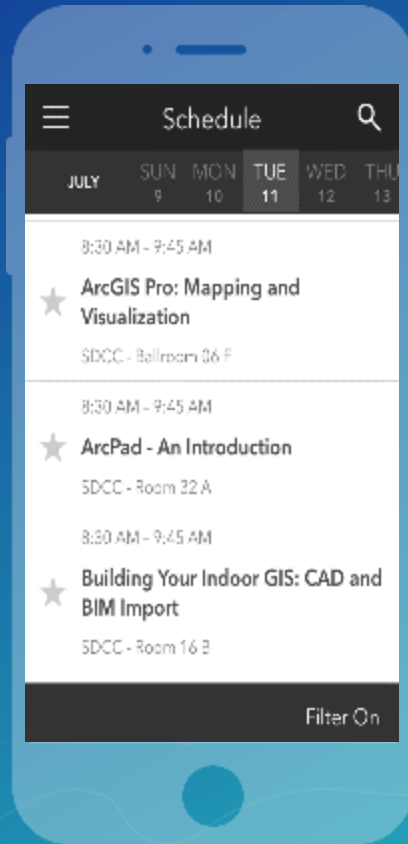


# Please Take Our Survey on the Esri Events App!

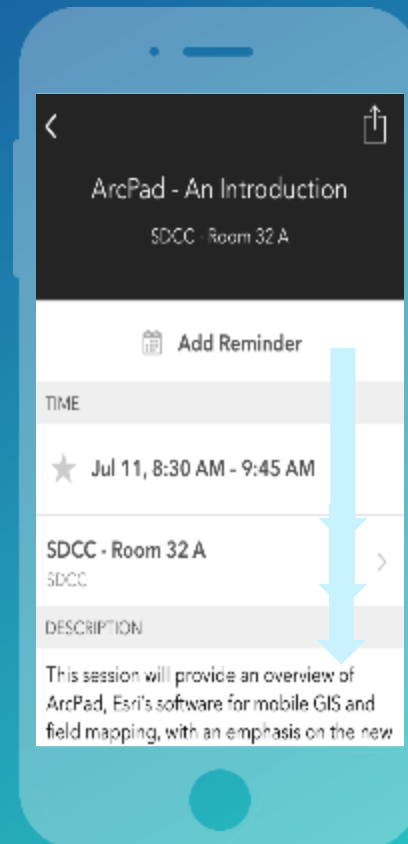
**Download the Esri Events app and find your event**



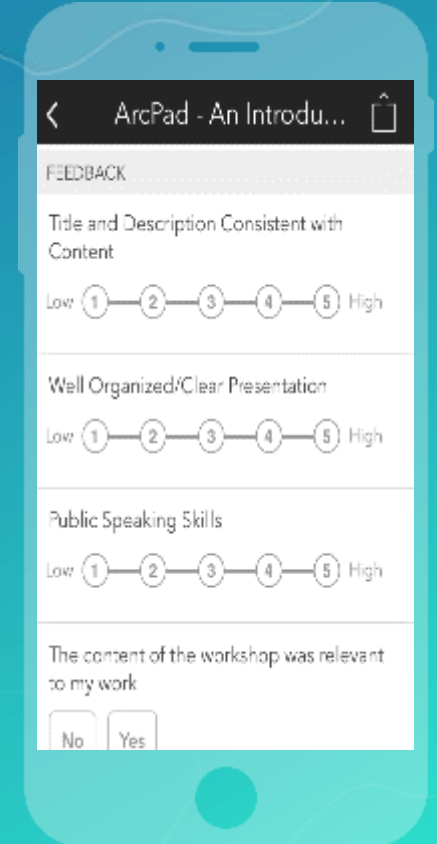
**Select the session you attended**



**Scroll down to find the survey**



**Complete Answers and Select "Submit"**





esri

THE  
SCIENCE  
OF  
WHERE