

# Community Analyst

Overview and Update

# Agenda

- Overview of Community Analyst
- What's New Including Data Updates
- Road Ahead

# Community Analyst

Helps organizations make informed decisions about population, resource allocation, and communities.



# Community Analyst

Allows you to combine your data with demographic, lifestyle, behavioral, and spending data from Esri.



# Community Analyst

Lets you understand data using smart mapping, location driven analytics and beautiful reports and infographics.





# Community Analyst

- A Web App
- Contains Data, Workflows, Analysis, and Reports
- Ready to use solution to help you understand:



Locations



Population

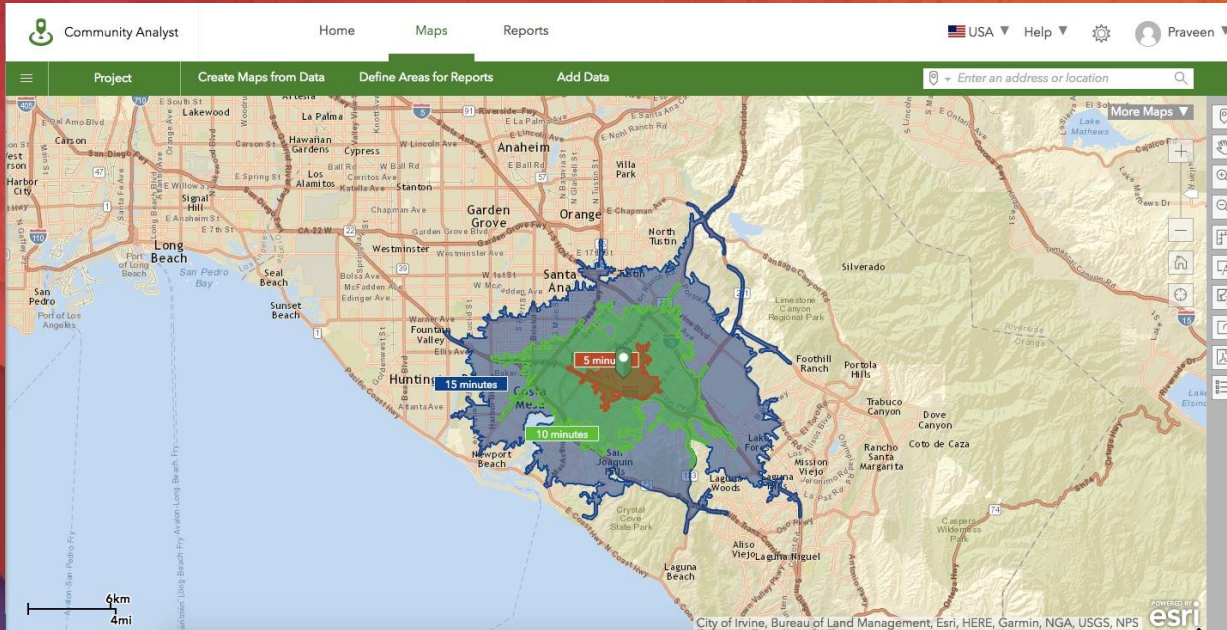


Neighborhoods

# Who Uses Business Analyst

- Health & Human Services
- Policy Makers
- Grant Writers
- Government Sector
- Economic Development
- And More..

# Demo

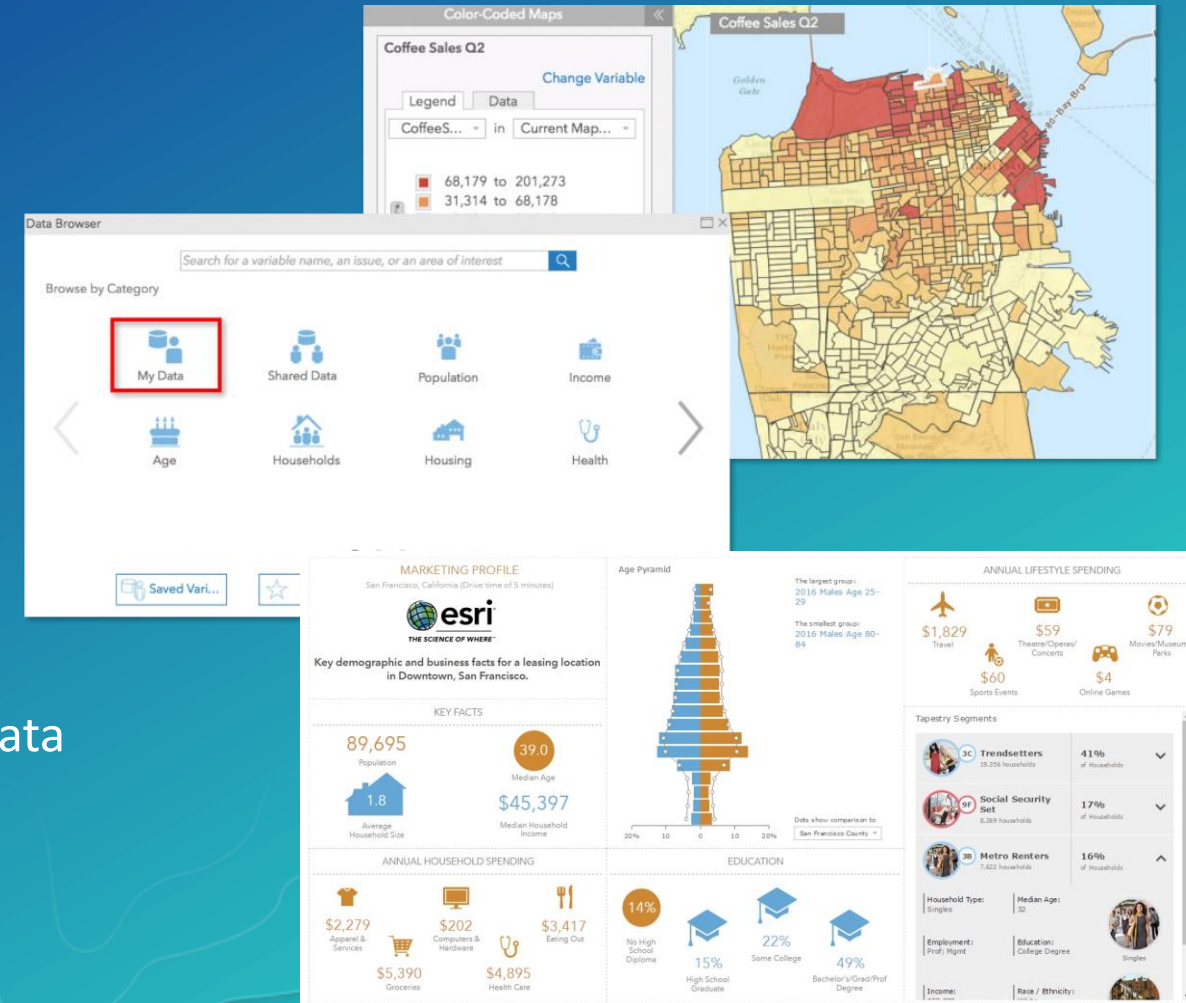


- <Use case information to be added>



# What's New

1. 2017 US Demographic Data in the Online release
2. Easily use your own organizational data
3. More Smart Mapping options
4. Suitability analysis workflow
5. Create beautiful infographics to visualize and present data
6. Visual traffic counts



# Demographic Data Updates

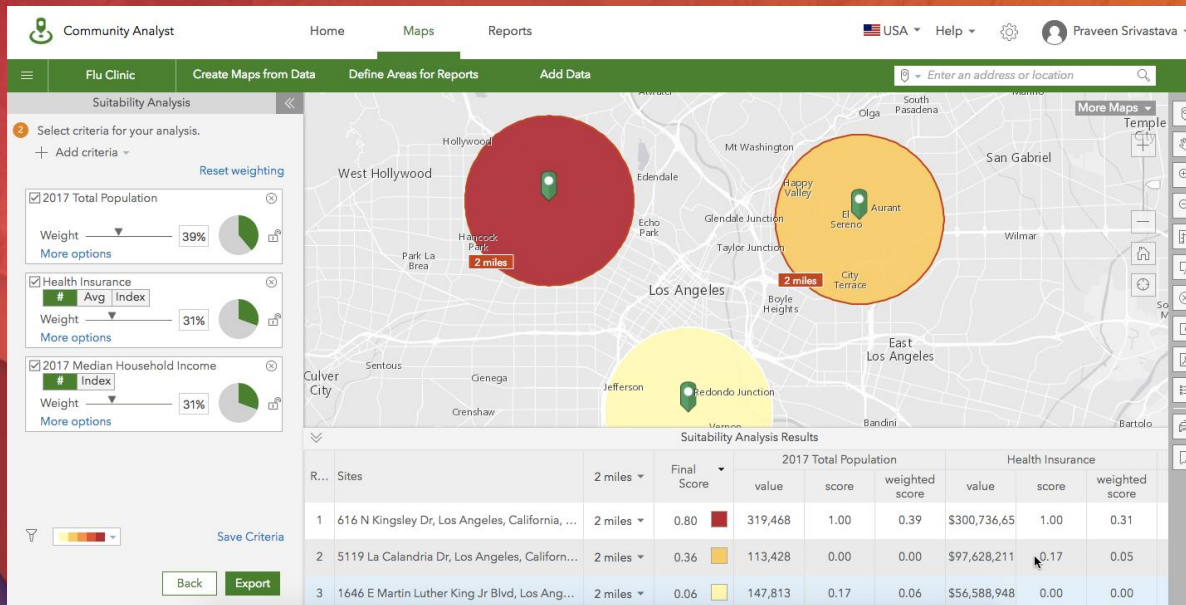
- Updated U.S. demographic data
  - Current year estimates and 5-year forecasts – 2017/2022
  - New variable definitions for a large subset of the data
- MBR data updated for 34 countries (Mainly in Asia and the Middle East)

Available online now



# Demo

- Determine most suitable location for a flu clinic
- Bring in your own health statistics data and use it with Esri Demographics data
- Use location attributes such as parking, size of the facility, and more



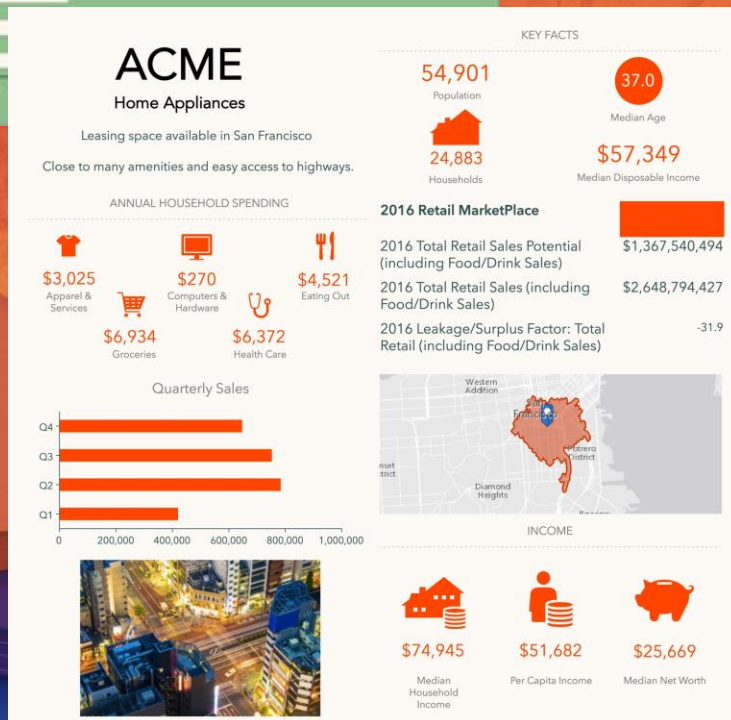
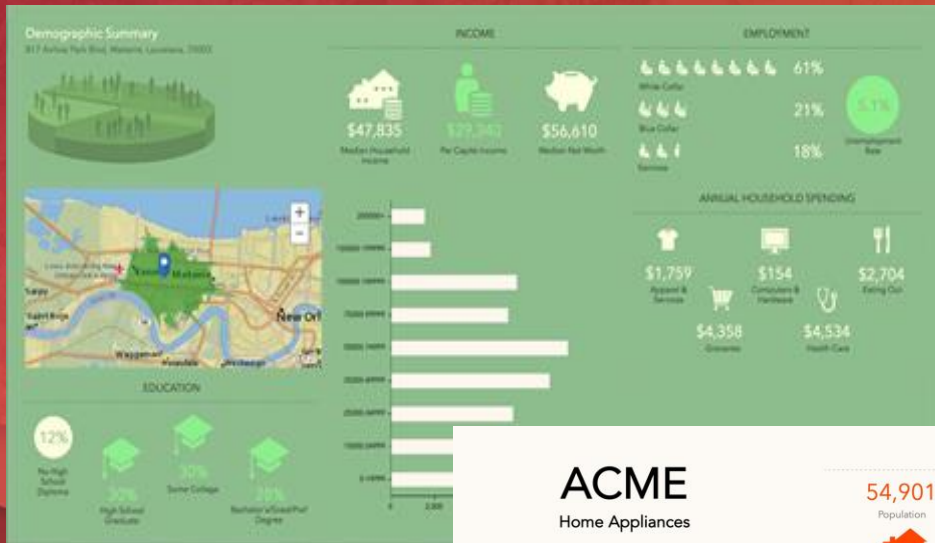


# More Data Updates

To be added by Lucy



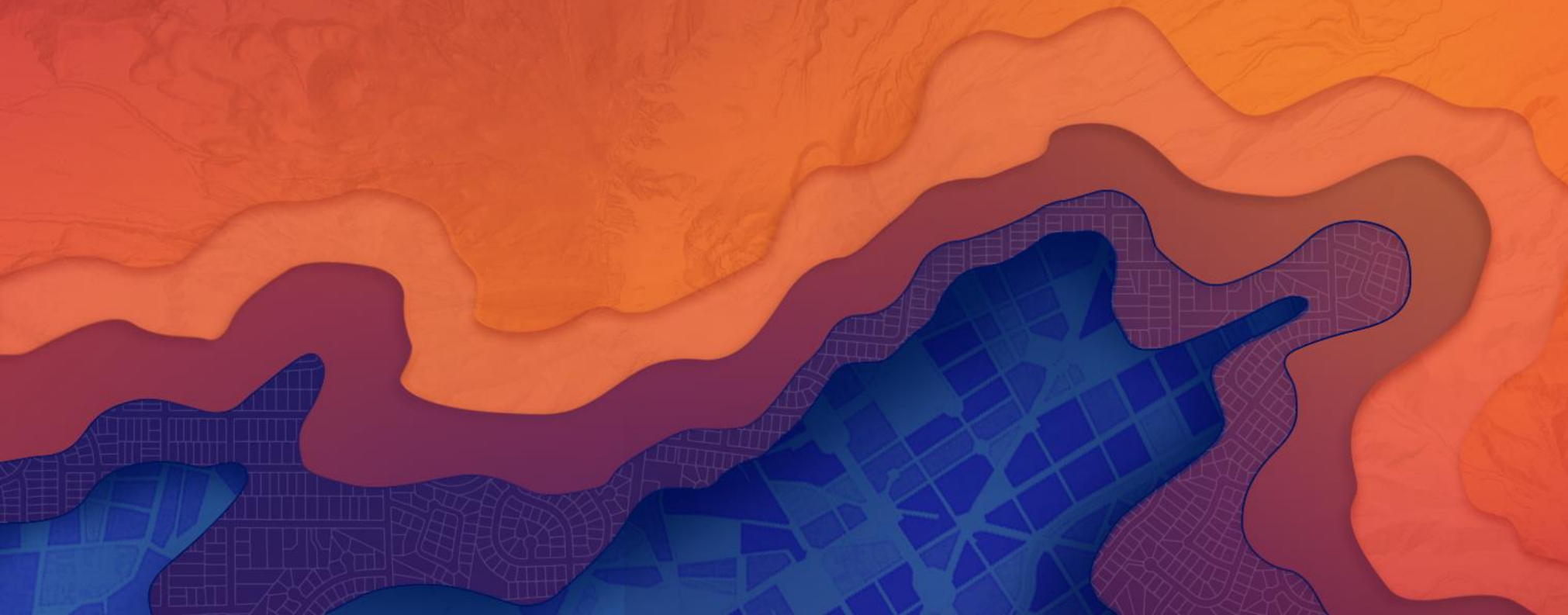
# Demo



- Provide decision makers with a summary of your analysis
- Include tables, charts, maps, images, and show your own branding in the analysis results
- Share results with other analysts in your organization

# Community Analyst

Road Ahead





# Road Ahead: Community Analyst

- New “comparison” workflow
- Output to a story map
- More infographic enhancements
- Improved organizational settings
- Localization

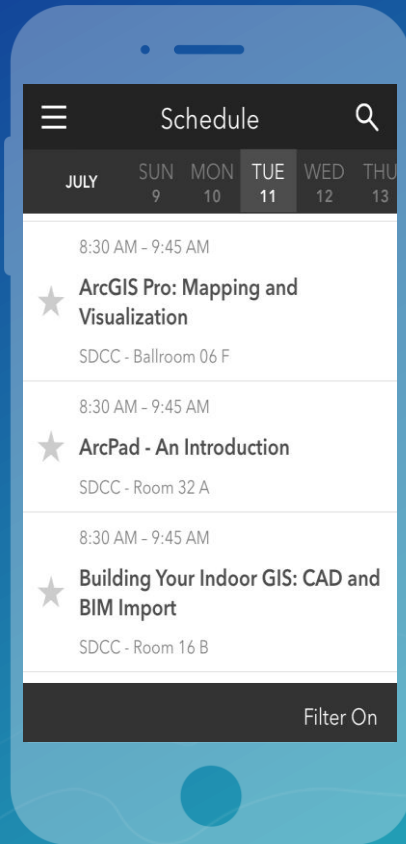


# Please Take Our Survey on the Esri Events App!

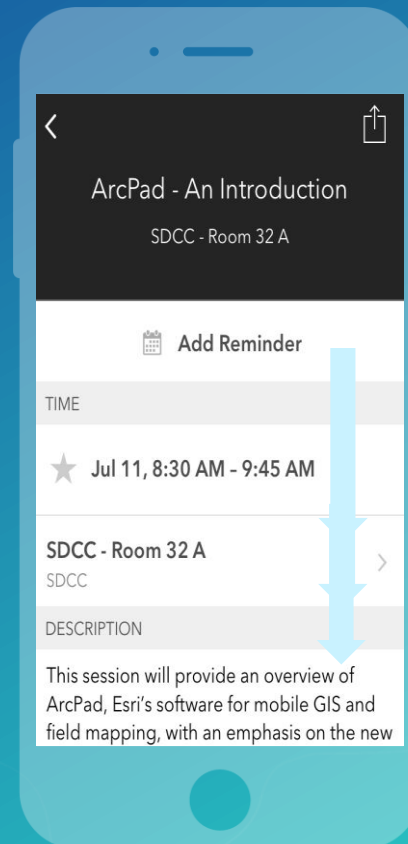
Download the Esri Events app and find your event



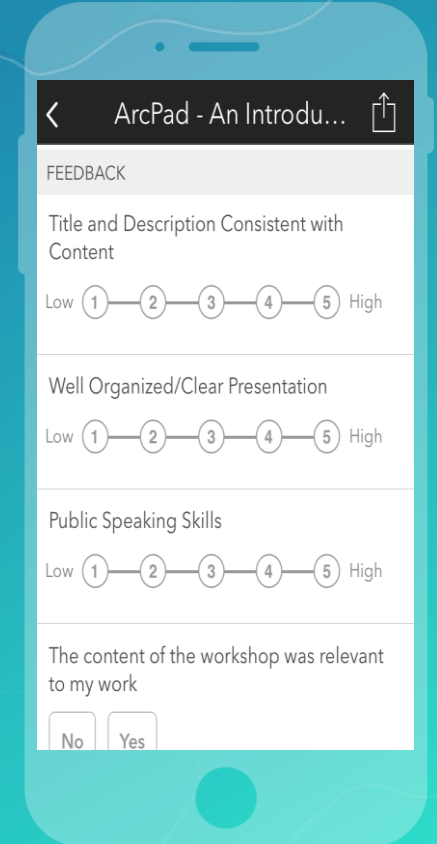
Select the session you attended



Scroll down to find the survey



Complete Answers and Select "Submit"







esri

THE  
SCIENCE  
OF  
WHERE