

3D Enable Your Campus and Workplace

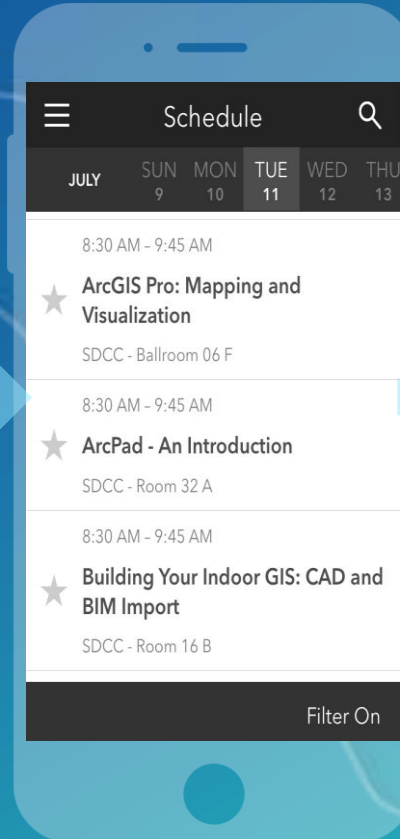
Ian Feathers, Solution Engineer – Geodesign/Facilities

Please Take Our Survey on the **Esri Events App**!

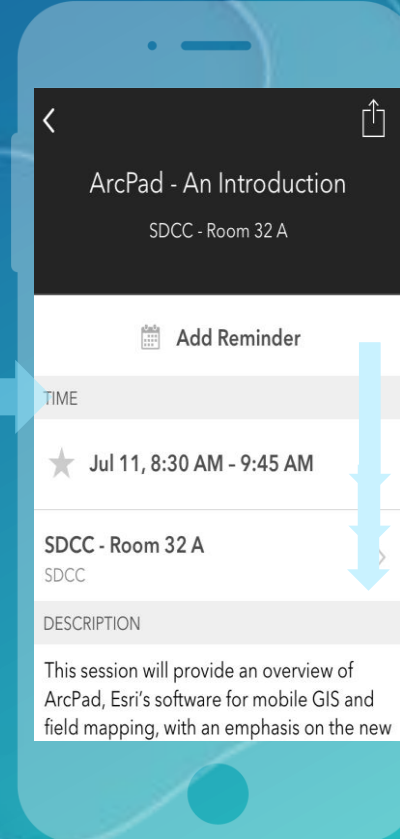
Download the Esri Events app and find your event



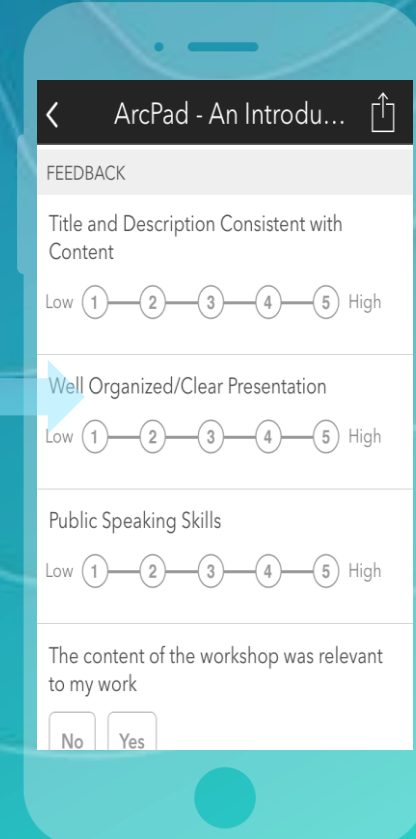
Select the session you attended



Scroll down to find the survey



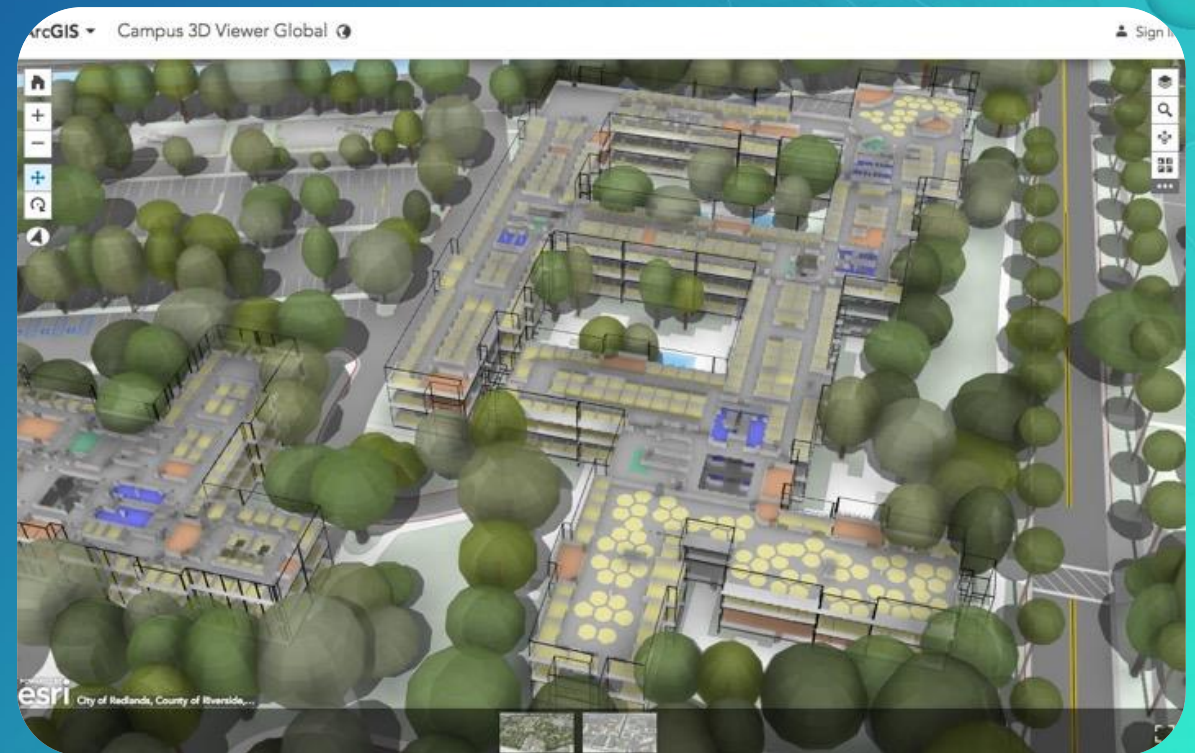
Complete Answers and Select "Submit"



Agenda

“You can’t manage or predict that which you cannot measure”

- Why should you map your Campus and Buildings in 3D?
- How to Start
- Available Tools
- Demo
- Q&A
- Interested? Please leave your business card



Why should you map your Campus and Buildings in 3D?

- 3D is realistic
- Visitors, Employees, Managers, and Executives can utilize
- Useful for optimizing Operations, Planning, and Safety/Security
- 100% Visibility for Energy & Maintenance
- Monitor Assets and Inventory
- Cost Reduction, Risk Mitigation, and Compliance



GIS Integrates With Your Systems and Data

Consolidating enterprise data + connecting to other systems of record



“You can’t manage or predict that which you cannot measure”

GIS Integrates With Your Systems and Data

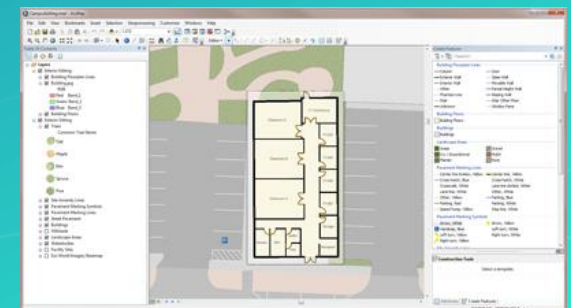
Consolidating enterprise data + connecting to other systems of record



“You can’t manage or predict that which you cannot measure”

How to Start

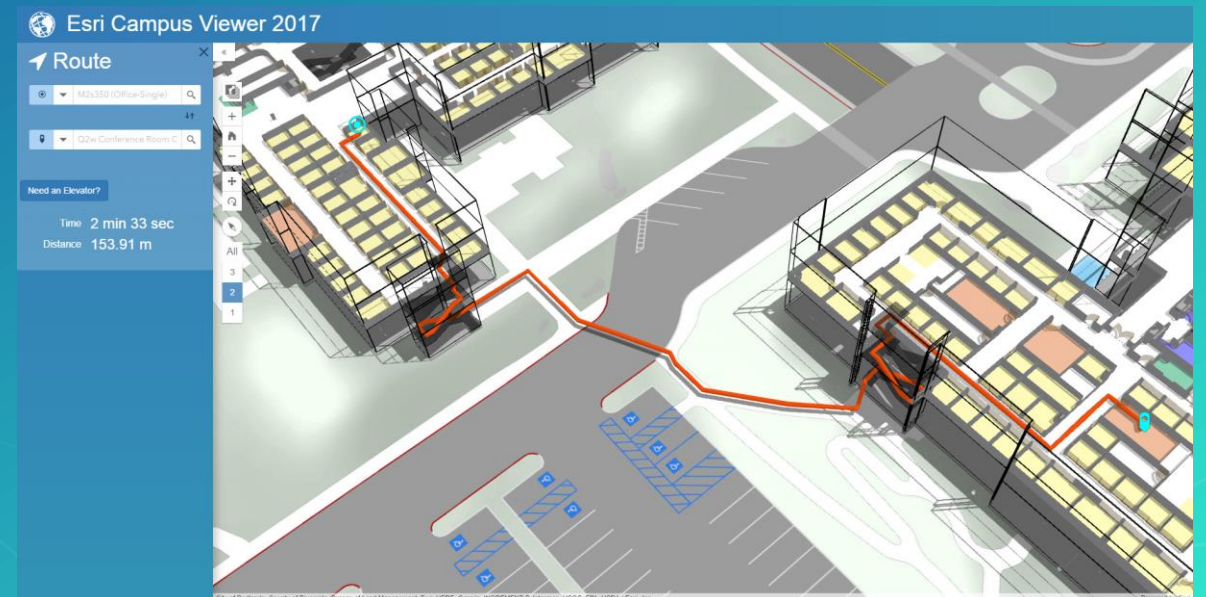
- Foundational Layers
 - Detailed 2D Basemap – 1:70
 - <http://solutions.arcgis.com/local-government/help/campus-editing/>
 - 3D Basemap
 - <http://solutions.arcgis.com/local-government/entire-organization/basescenes/>
- Building Floorplans and Footprints
 - Utilize existing CAD floor plans by converting to polyline feature class (Building Floorplan Lines)
 - Interior Spaces (polygons)
 - BIM to IFC to GDB (Multipatch)
 - Data Interoperability



ArcGIS Indoors

bit.ly/indoors2017uc

- CAD to GIS
 - Python tool
 - LGIM or generic output
- Indoor Network Creation
 - Publish as Route (Network Analyst)/GP service to ArcGIS Enterprise
- Style and Share Campus Layers
 - Symbolize layers
 - Compile Webscene
- Configure Campus Viewer App
 - JavaScript 4.4 API
 - Add REST URLs and host on web server



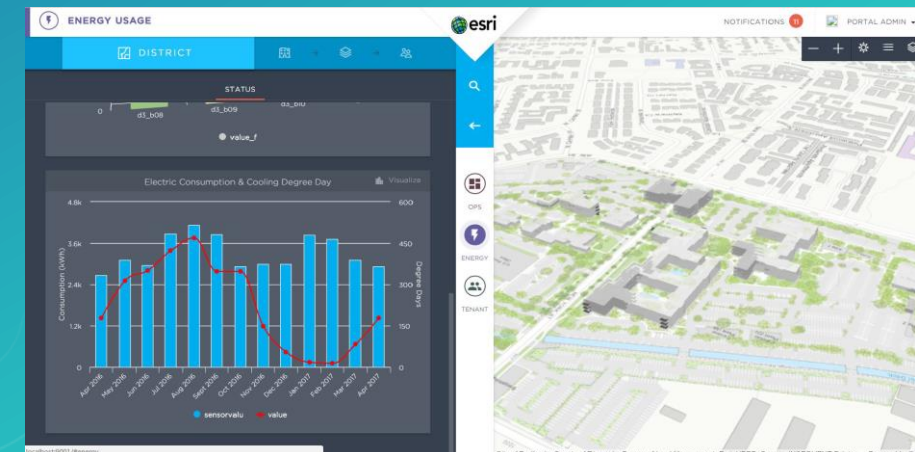
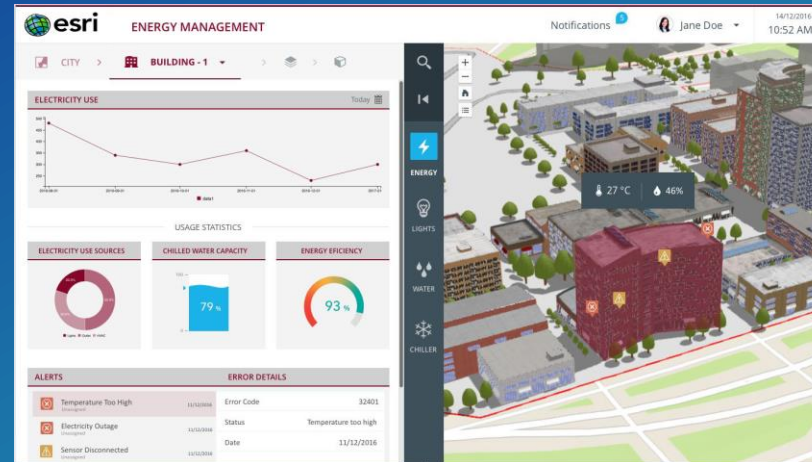
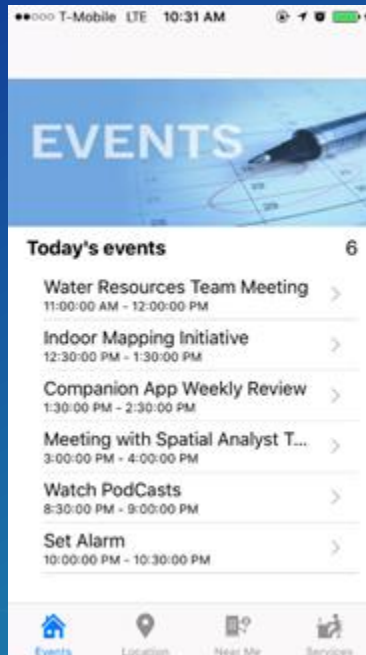
3D Campus Viewer Tools & Application



Road Map Ahead

bit.ly/indoors2017uc

- Companion App
- 3D Dashboard



Questions?

Contact:

Ian Feathers, Solution Engineer

ifeathers@esri.com

esri.com/facilities

facilities.maps.arcgis.com

bit.ly/indoors2017uc



esri

THE
SCIENCE
OF
WHERE