

UC



# ArcGIS Pro: An Introduction

David Watkins and Robert LeClair

# ArcGIS Desktop



ArcMap  
ArcCatalog  
ArcScene  
ArcGlobe



ArcGIS Pro



Apps

Portal



Access



Server

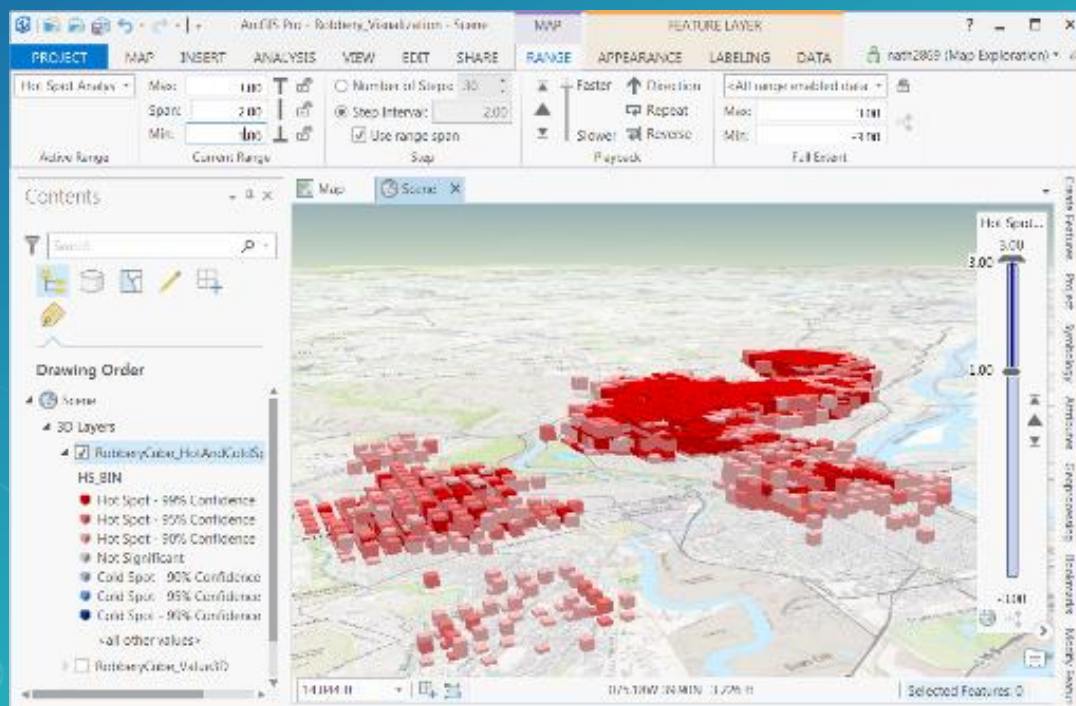
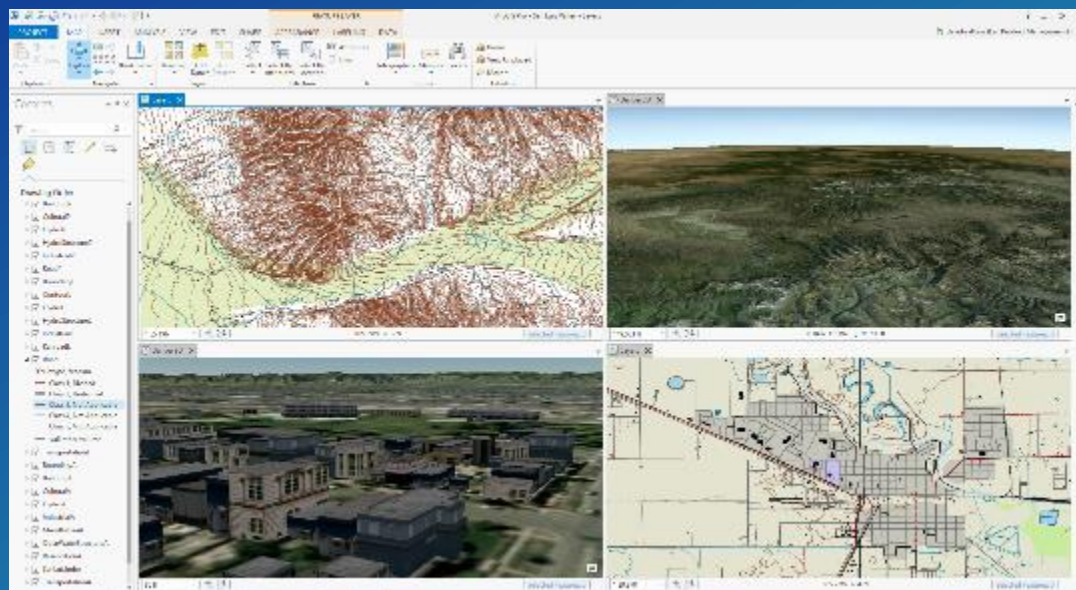


Online Content  
and Services

Services

# ArcGIS Pro

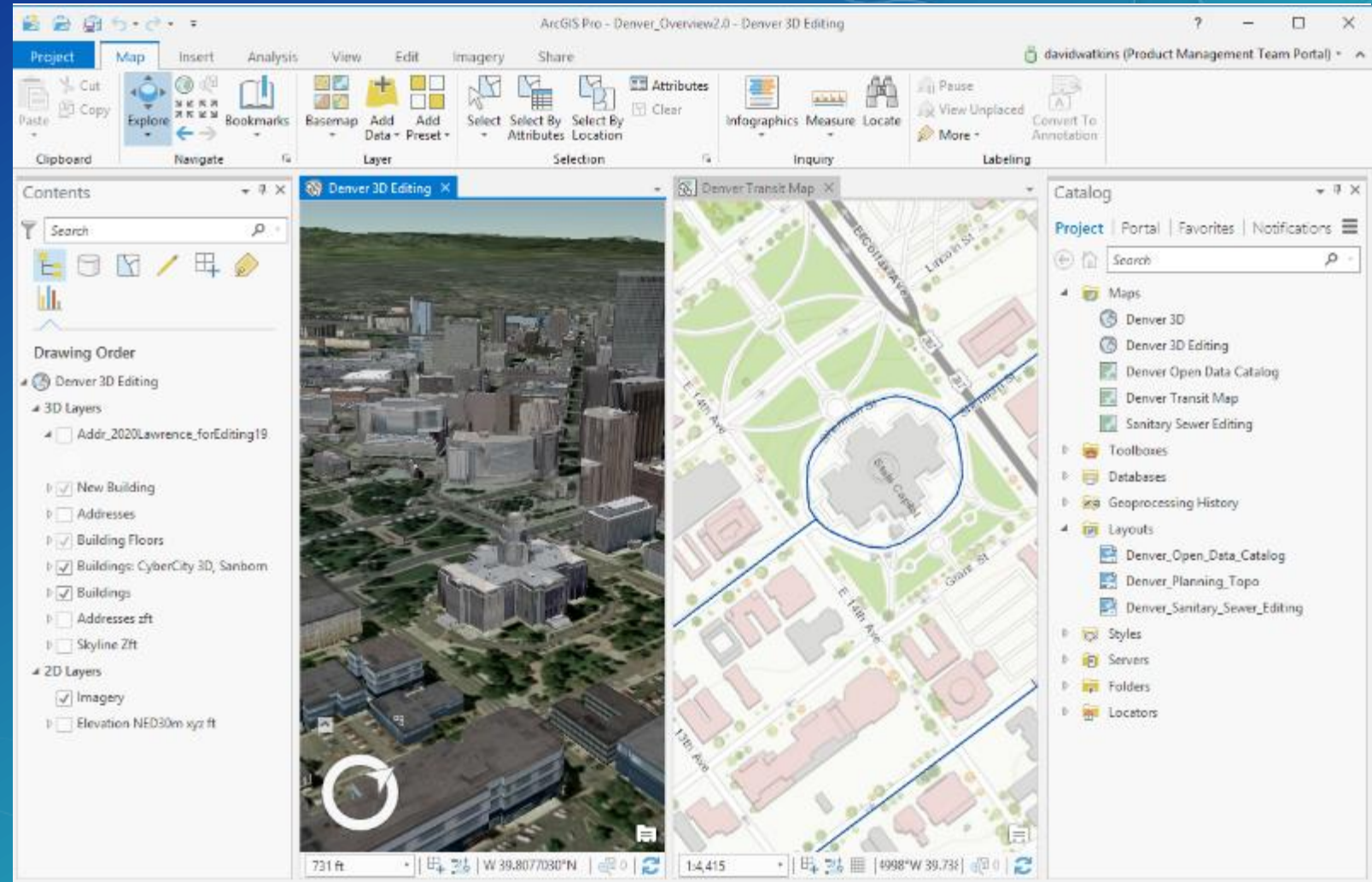
- 64 Bit, multi-threaded
- Simplified user interface
- Integrated with ArcGIS Online
- Combined 2D/3D experience
- Multiple maps and layouts
- All the analysis tools
- Simple search and query





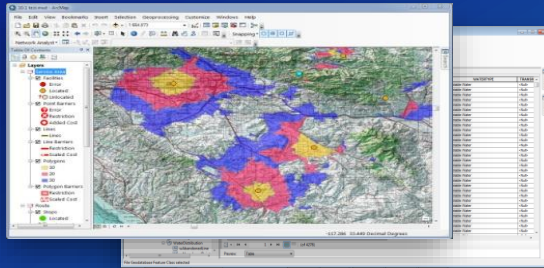
# The user interface is new

- Contextual
- Intuitive
- Project based
- Map focused
- Integrated

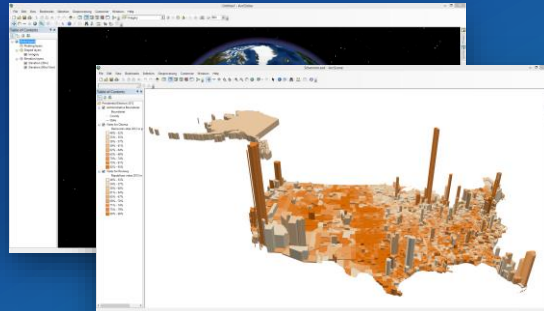


# Fusion of applications

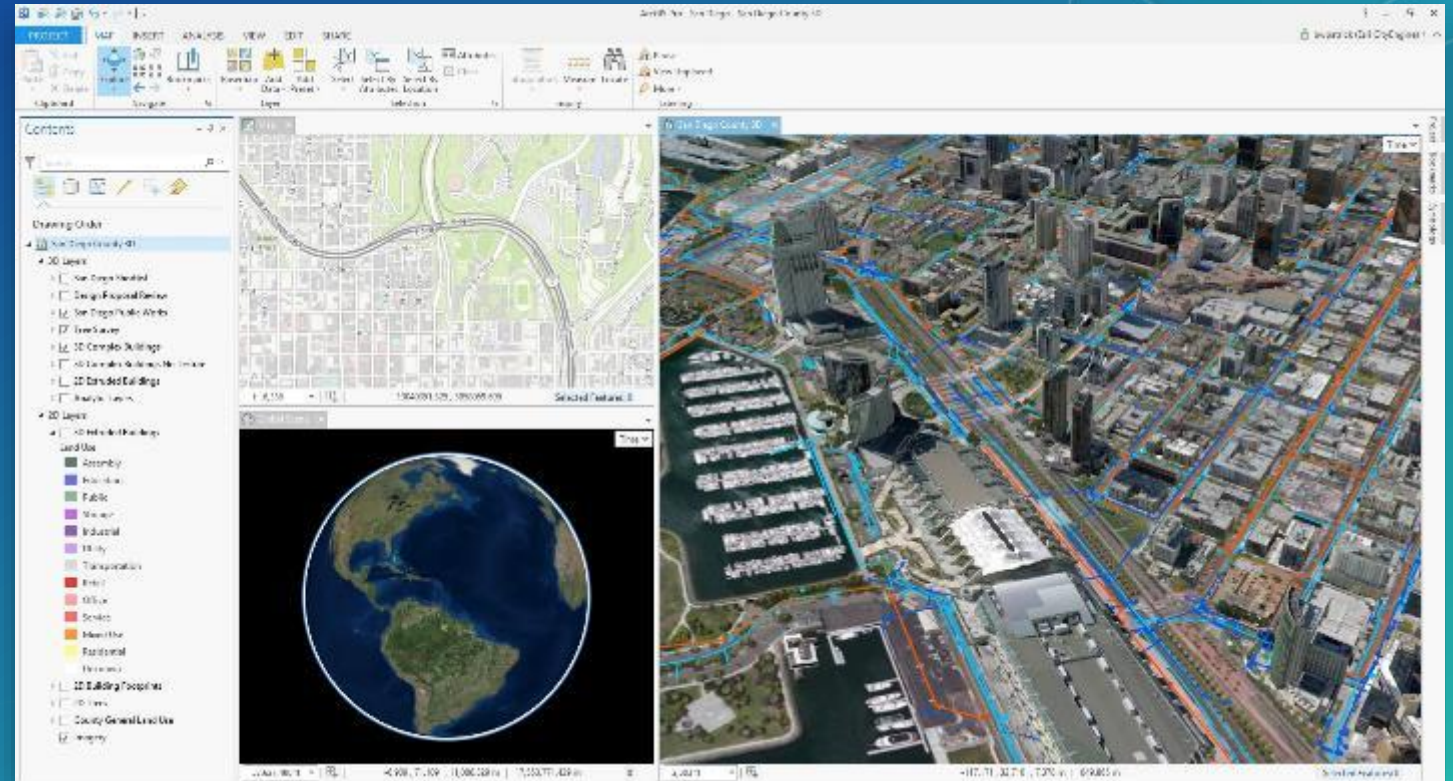
ArcMap / ArcCatalog



ArcGlobe / ArcScene



CityEngine



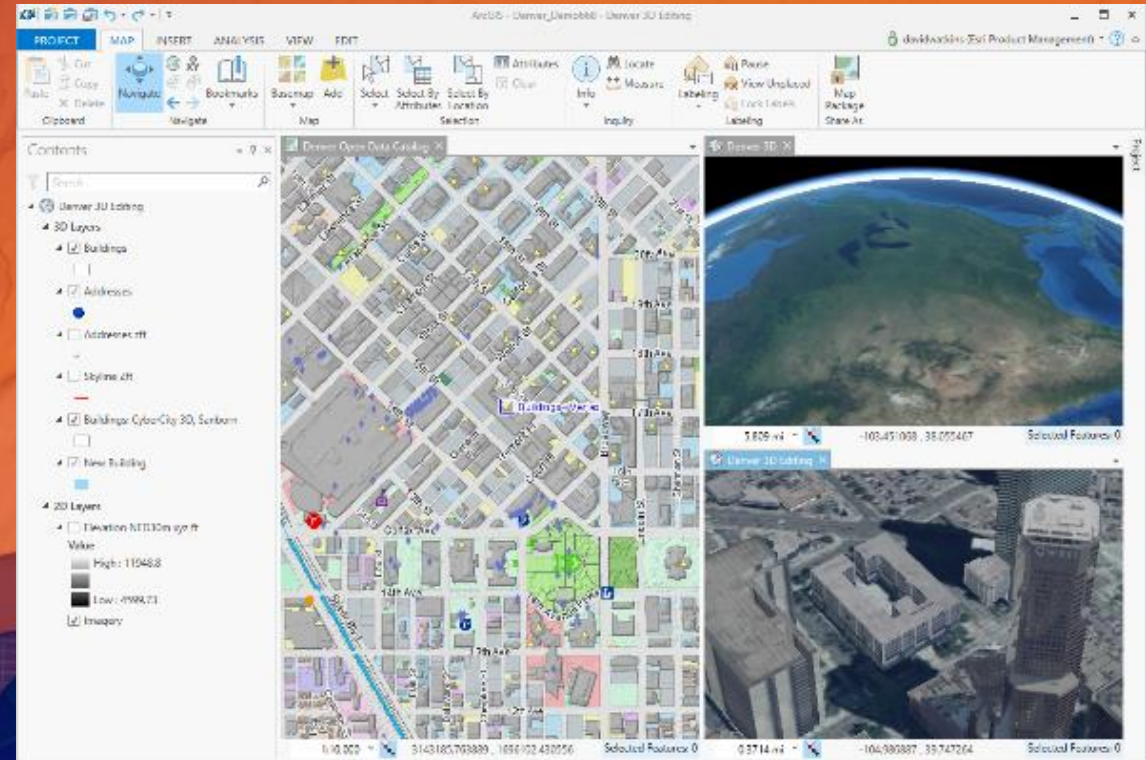
ArcGIS Pro





# Demonstration

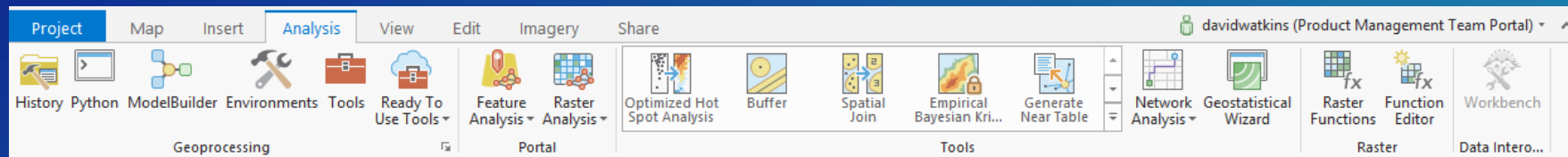
## Overview of ArcGIS Pro



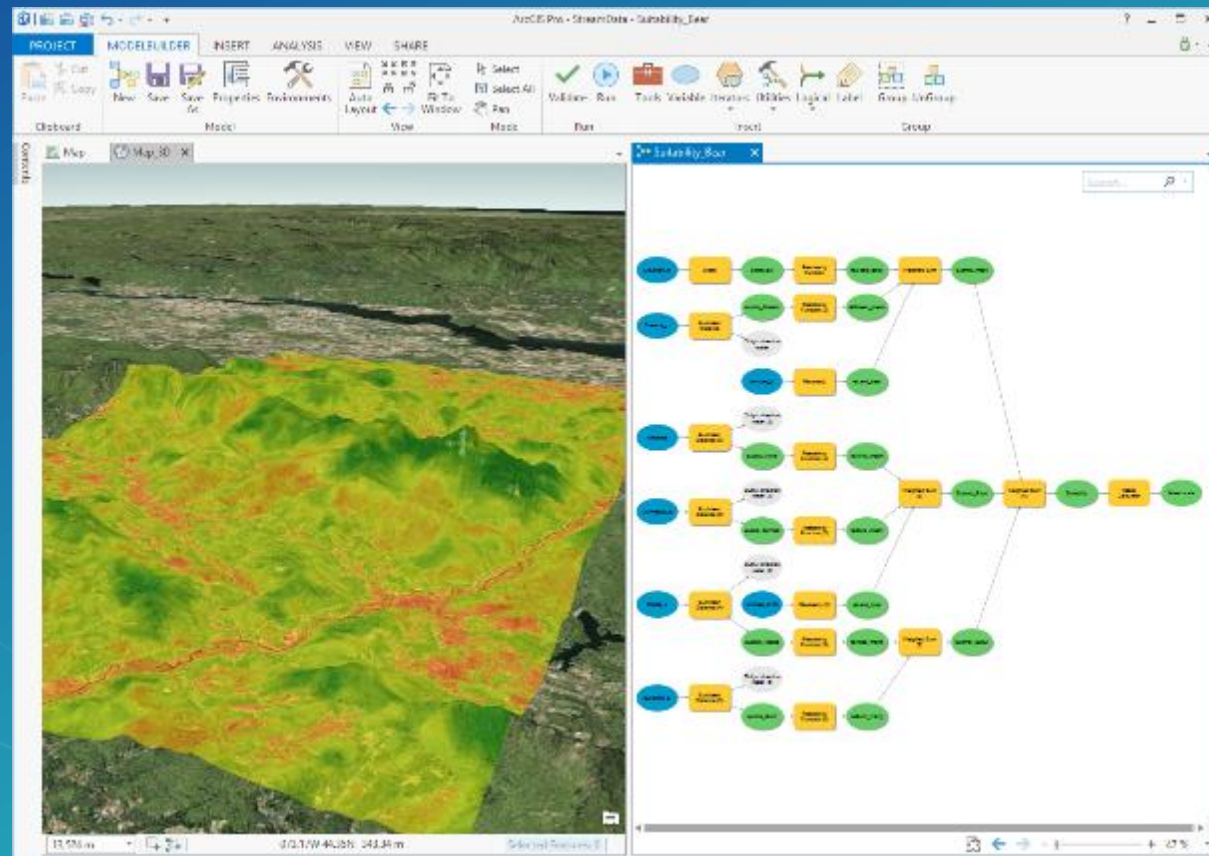


**What can I do with ArcGIS Pro?**

# Analysis



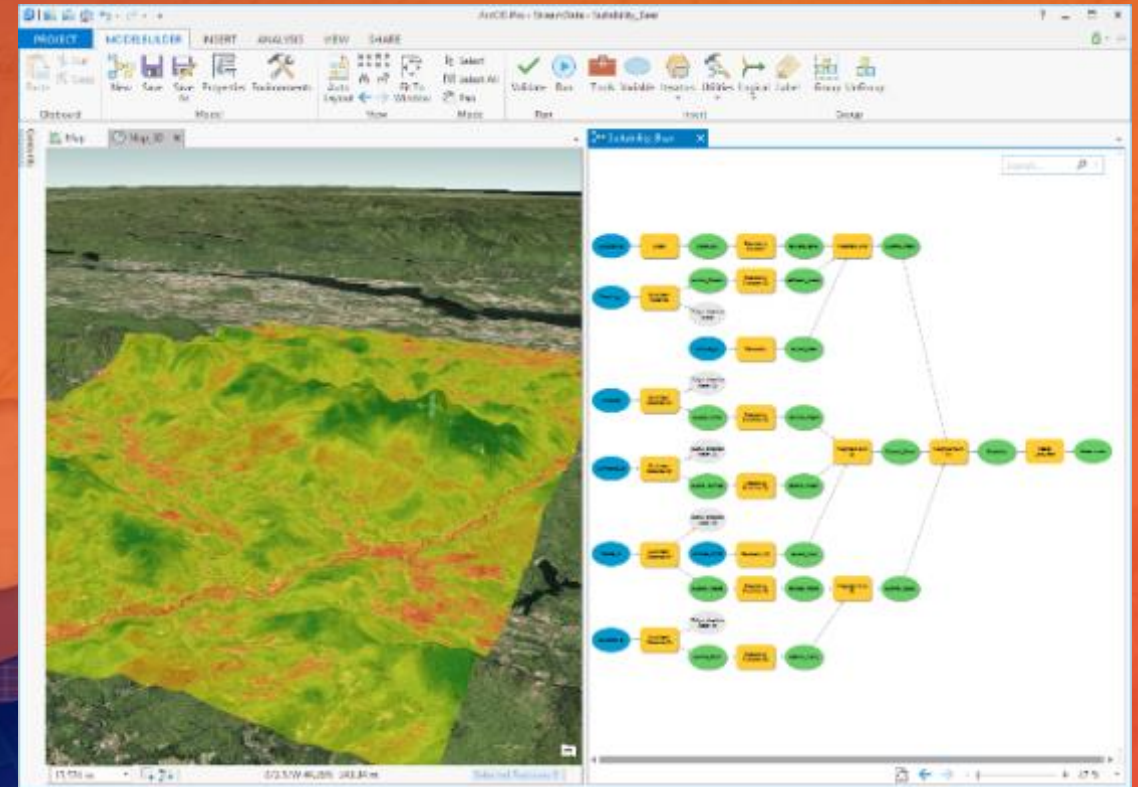
- Analysis ribbon
- Majority of tools from ArcMap
- Geoprocessing pane
- Modelbuilder
- Python window
- Network Analysis
- Geostatistical Wizard
- Image and Raster Analysis





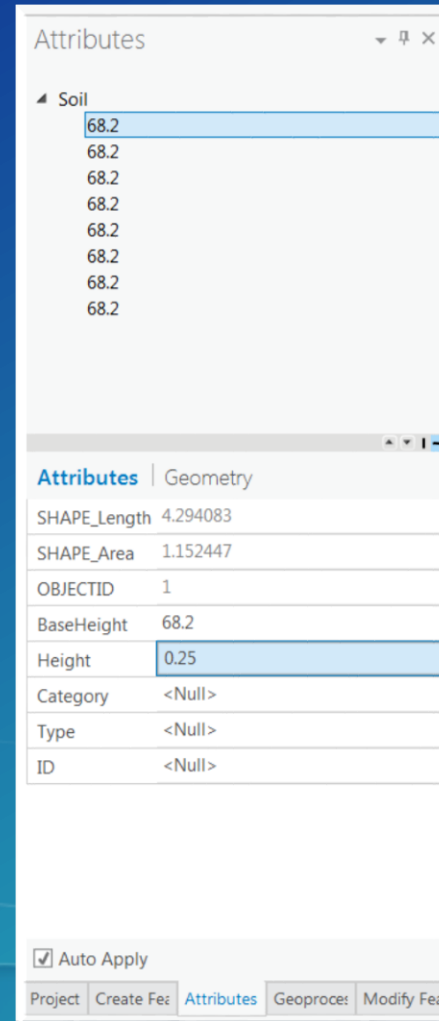
# Demonstration

Analysis in ArcGIS Pro

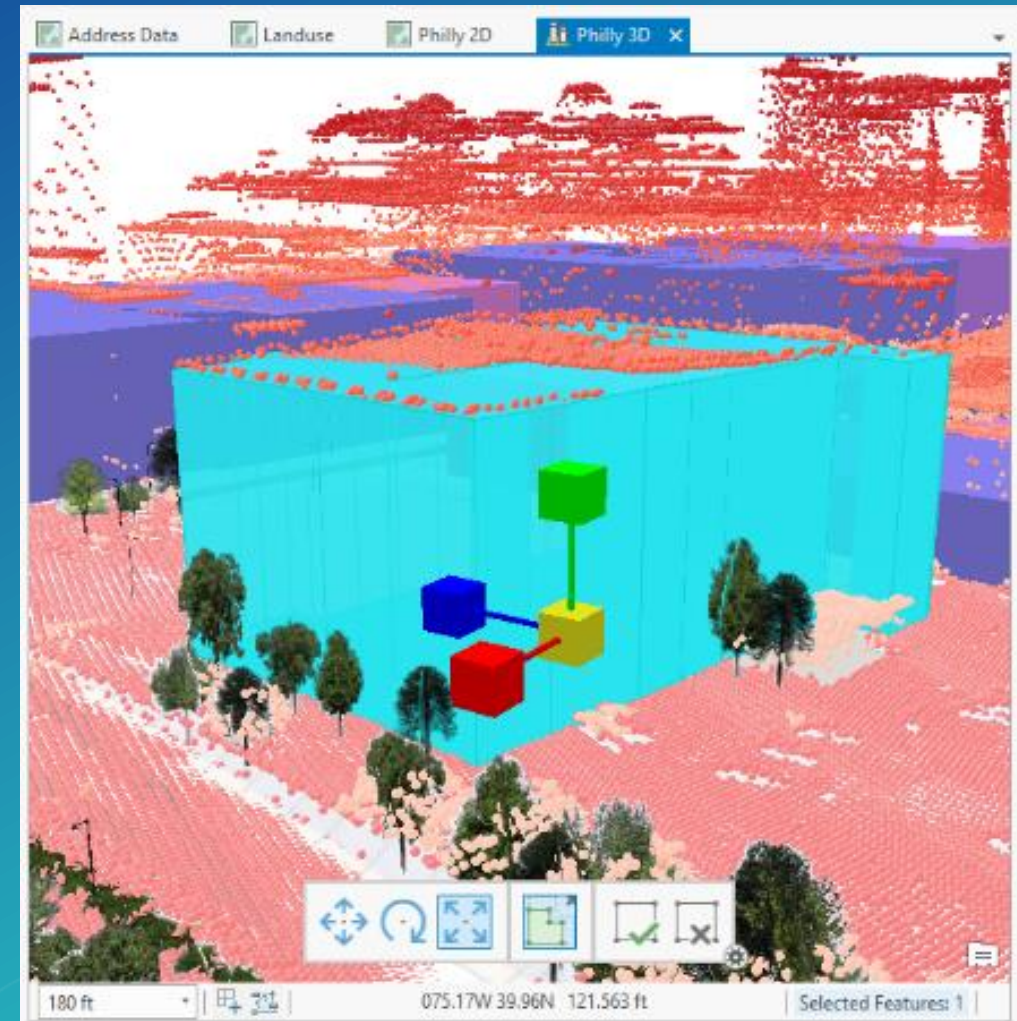


# Editing

- 2D and 3D editing
- Simplified edit sessions
- Edit enterprise GDBs
- Group templates
- GDB & Map Topology
- CAD like editing experience



Update Attributes

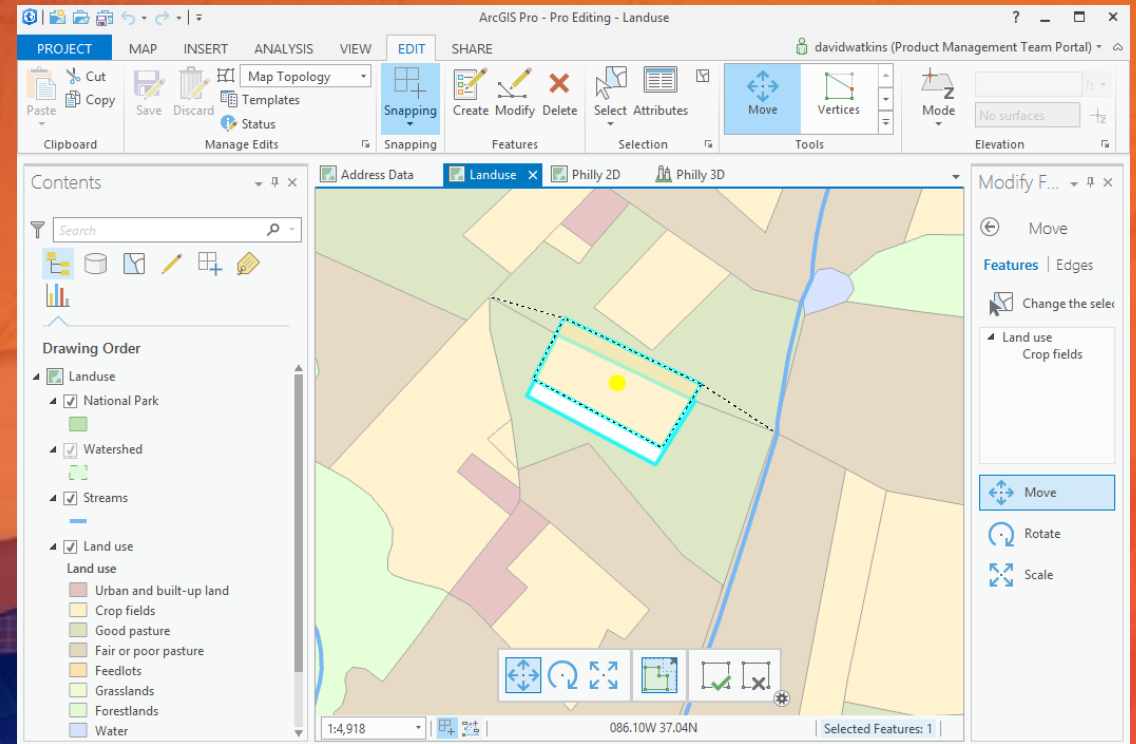


Create & Maintain



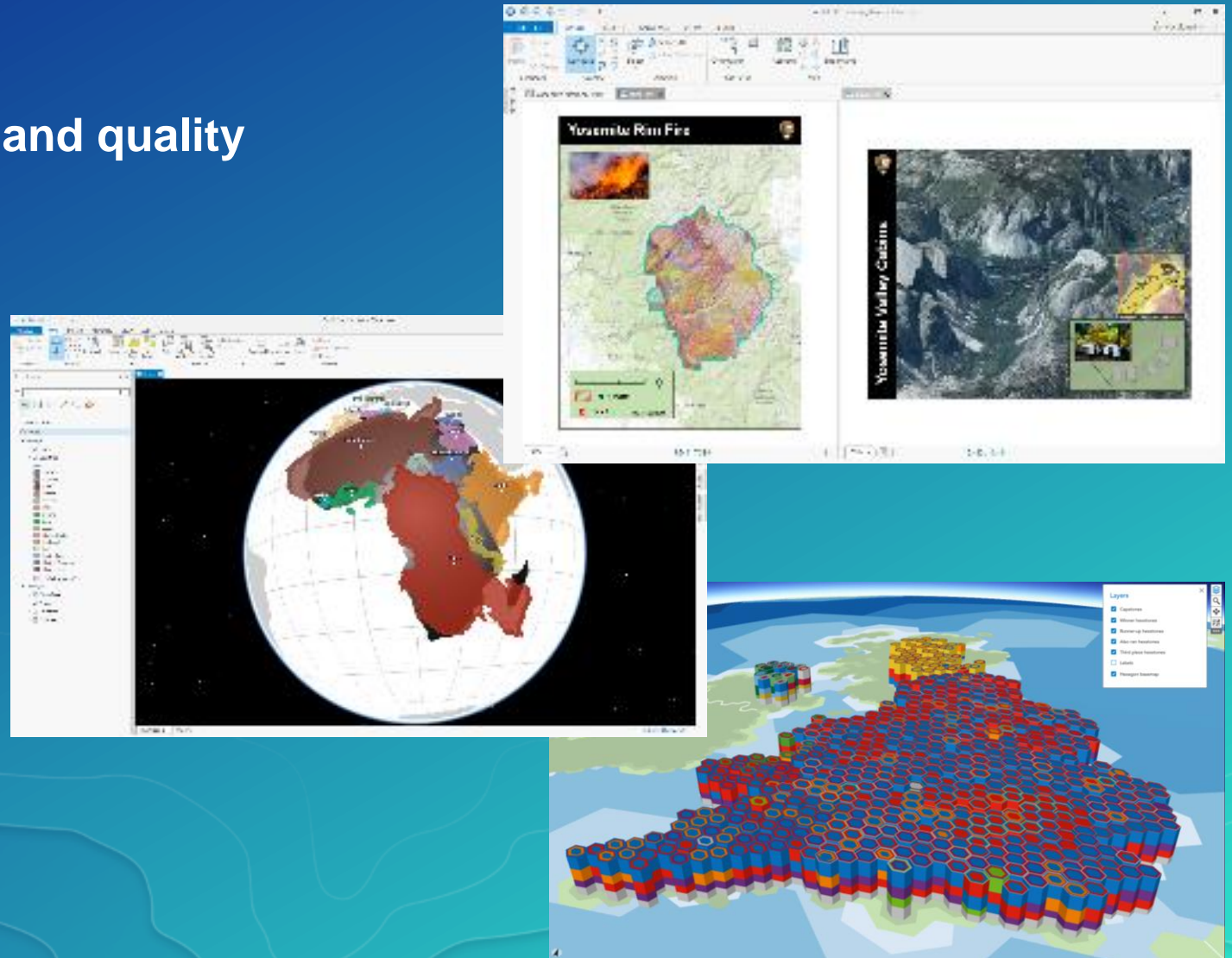
# Demonstration

Editing in ArcGIS Pro



# Mapping & Visualization

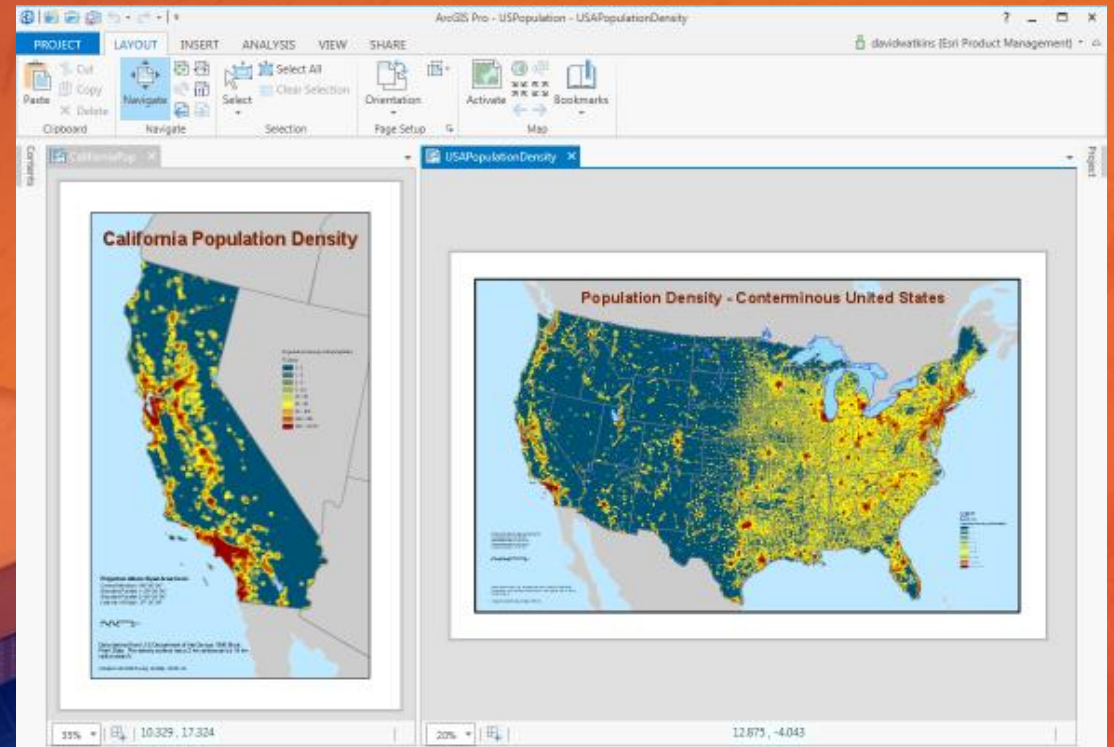
- Improved drawing performance and quality
- Multiple layouts
- Unified symbol model
- Transparency
- 3D Cartography
- Map Series
- Animation





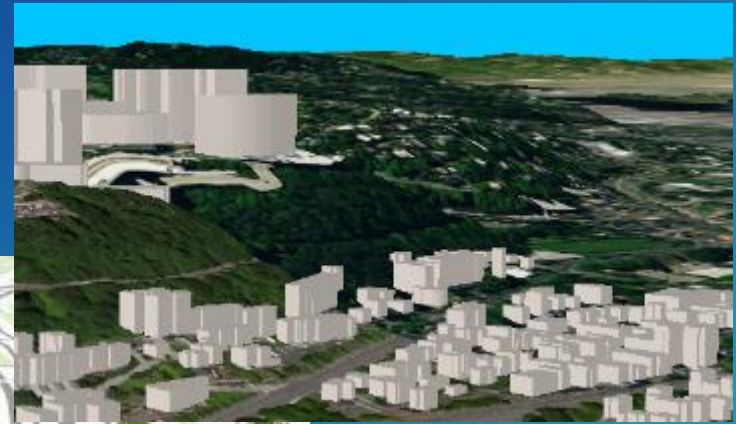
# Demonstration

Mapping in ArcGIS Pro



# Sharing

- Web maps and 3D web scenes
- Map and layer packages
- Project packages
- Map & Layout files
- Task files
- Symbology (stylx)



Portal  
Online



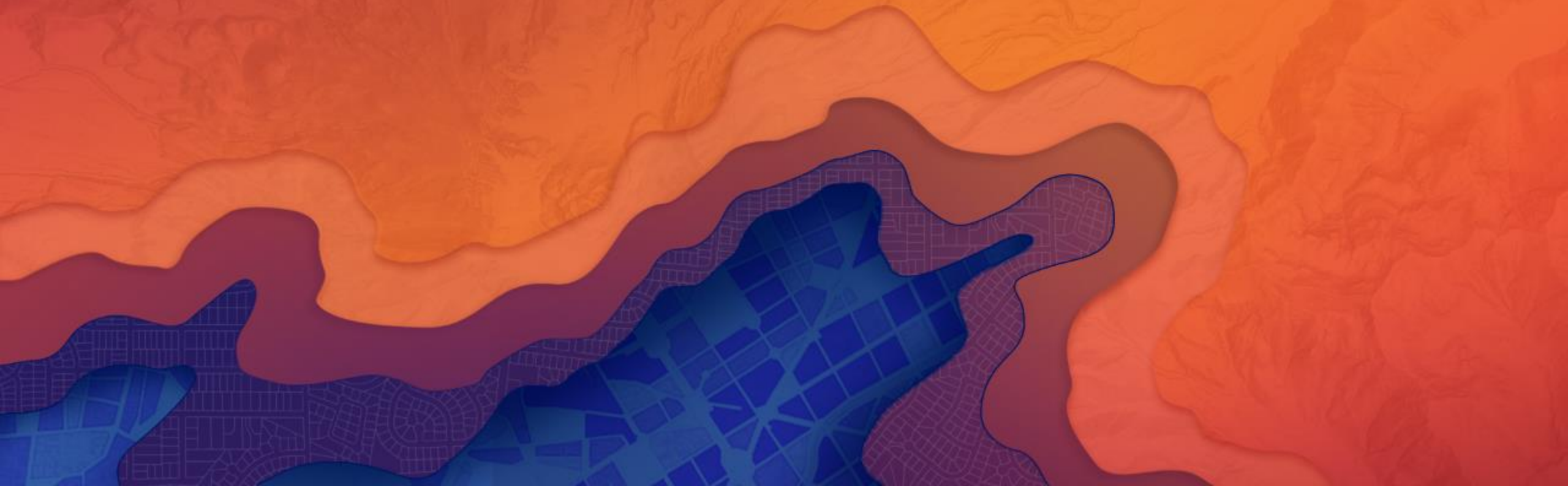
Share



ArcGIS Pro



# Common Questions



**Is ArcGIS Pro a replacement  
for ArcMap?**





**How is ArcGIS Pro licensed?**

Any way you want



Becky

**Named user**



**Single use**

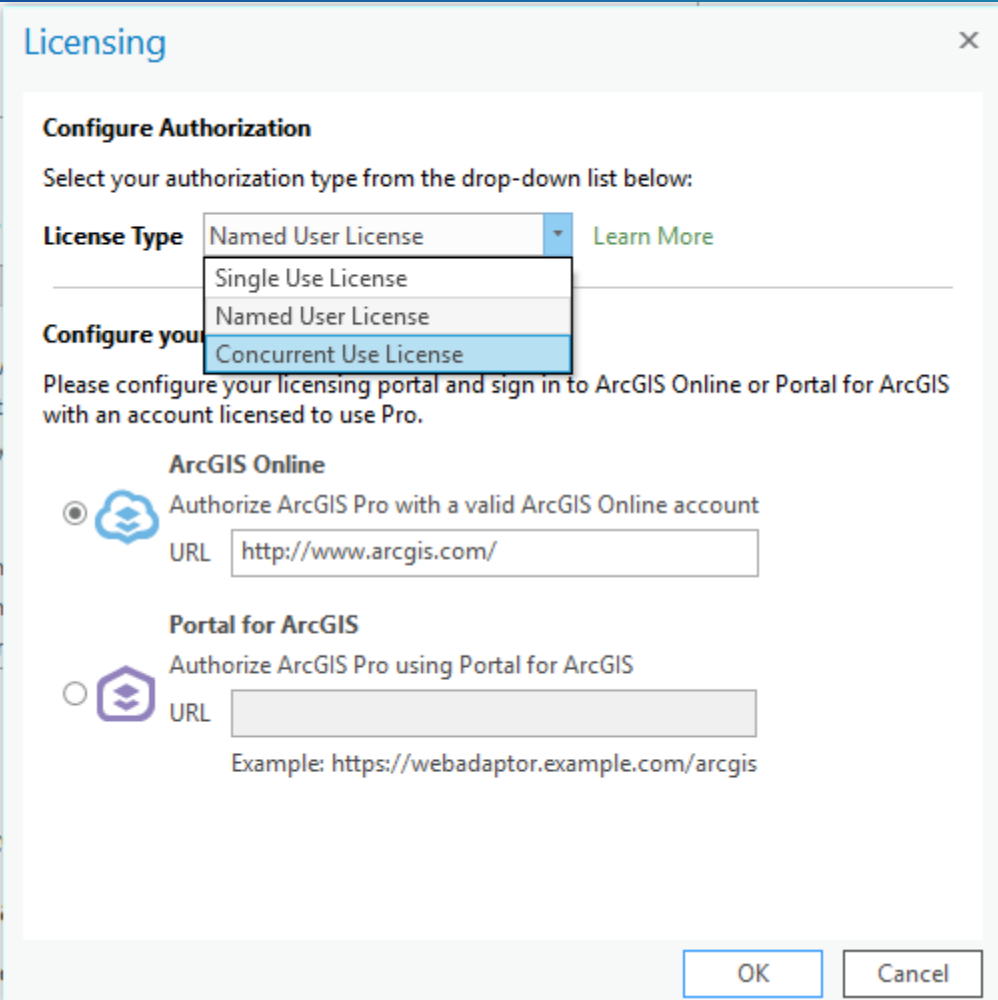


**Concurrent use**



# Licensing options

- **Concurrent Use**
  - Requires a 10.4 or later license manager
  - Updated license file
- **Single Use**
  - Locked to a machine



The screenshot shows the 'Licensing' dialog box with the 'Configure Authorization' section. A dropdown menu for 'License Type' is open, showing 'Named User License', 'Single Use License', 'Named User License', and 'Concurrent Use License'. The 'Concurrent Use License' option is highlighted. Below the dropdown, there is a 'Configure your...' section with two radio button options: 'ArcGIS Online' (selected) and 'Portal for ArcGIS'. The 'ArcGIS Online' option has a URL field containing 'http://www.arcgis.com/'. The 'Portal for ArcGIS' option has a URL field with an example: 'https://webadaptor.example.com/arcgis'. At the bottom right are 'OK' and 'Cancel' buttons.

**Licensing**

**Configure Authorization**


Select your authorization type from the drop-down list below:

**License Type** Named User License [Learn More](#)

**Configure your**


Please configure your licensing portal and sign in to ArcGIS Online or Portal for ArcGIS with an account licensed to use Pro.

**ArcGIS Online**

☒  Authorize ArcGIS Pro with a valid ArcGIS Online account

URL

**Portal for ArcGIS**

☐  Authorize ArcGIS Pro using Portal for ArcGIS

URL

Example: https://webadaptor.example.com/arcgis

**OK** **Cancel**

**Can I publish to Server from Pro?**

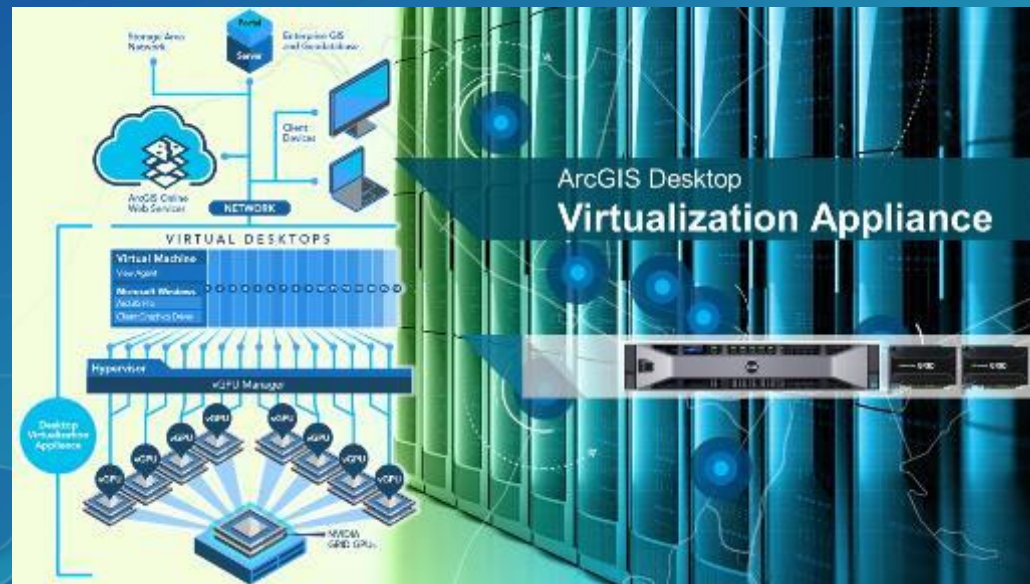


**Can ArcGIS Pro be virtualized?**

# On-premise Virtualization

## Virtualization Platform

- VMWare
  - ESXi
  - Horizon View
- Citrix
  - XenServer
  - XenDesktop





# Cloud-based Virtualization

## Microsoft Azure

- **NV-Series VM**
  - **Nvidia GPU**
  - **56 Gb Memory**
  - **380 Gb storage**
  - **Demo'd at Microsoft Ignite**

## AWS

- **GPU Workspace**
  - **Nvidia GPU**
  - **8 vCPUs**
  - **15 Gb Memory**
  - **200 Gb storage**



- ❑ **Available Now**
- ❑ **Tested by Esri Performance Engineering – Great UX**

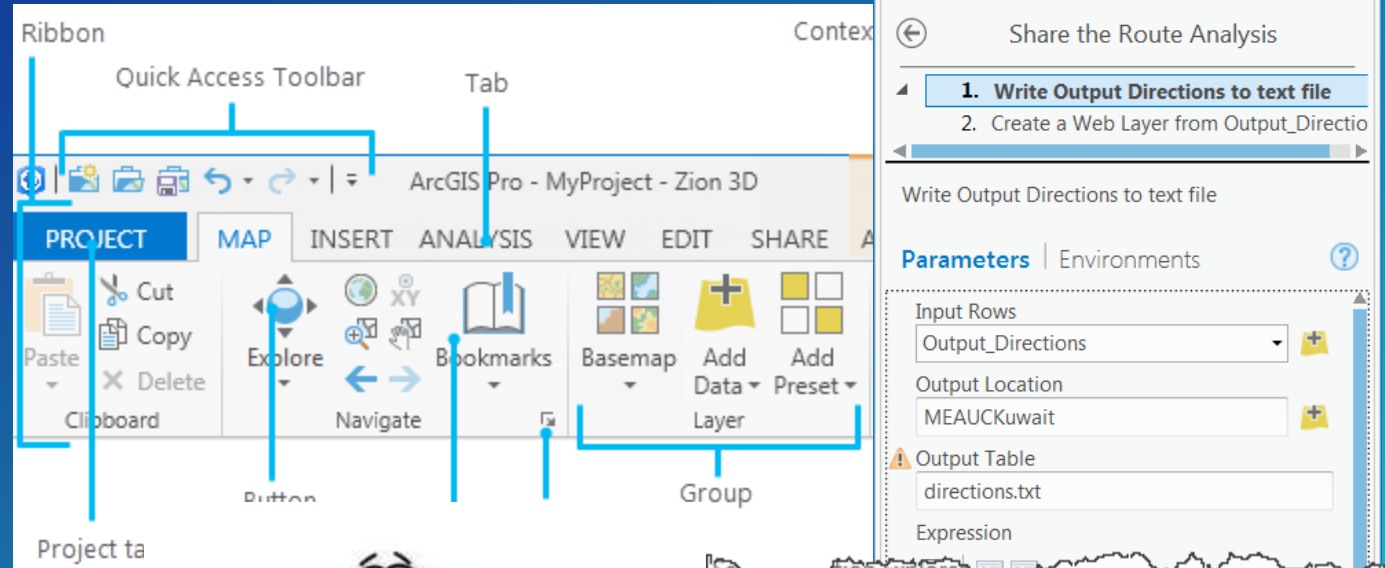
The demo really demonstrated the “Workstation in the Cloud” scenario that is now really possible with Azure NV based Virtual Machines at Ignite! - Karan Batta, Microsoft Azure

**Can I customize ArcGIS Pro?**



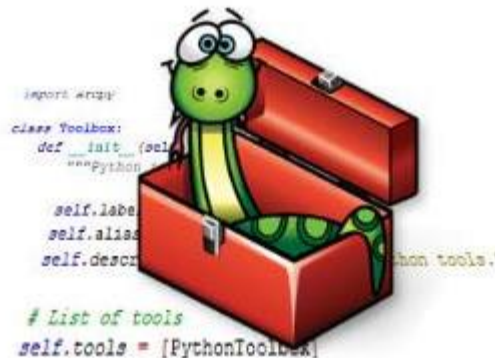
- Use
- Configure
- Automate
- Extend

## Tasks

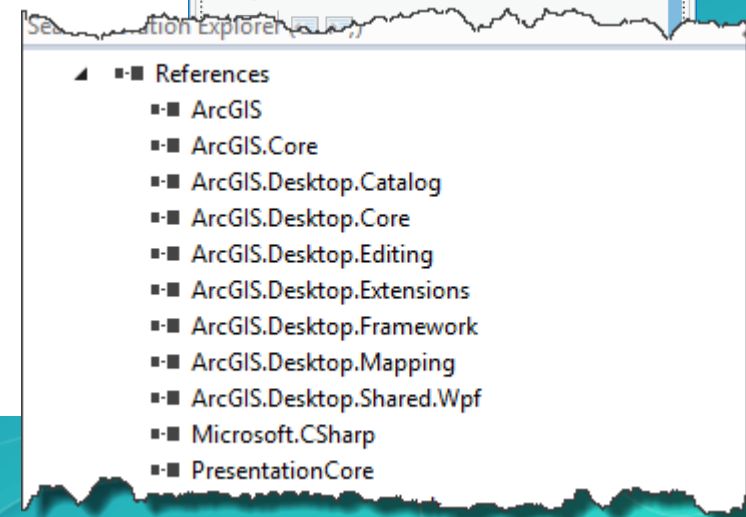


Project ta  
Use to m  
the proje  
set option

Custom  
Python

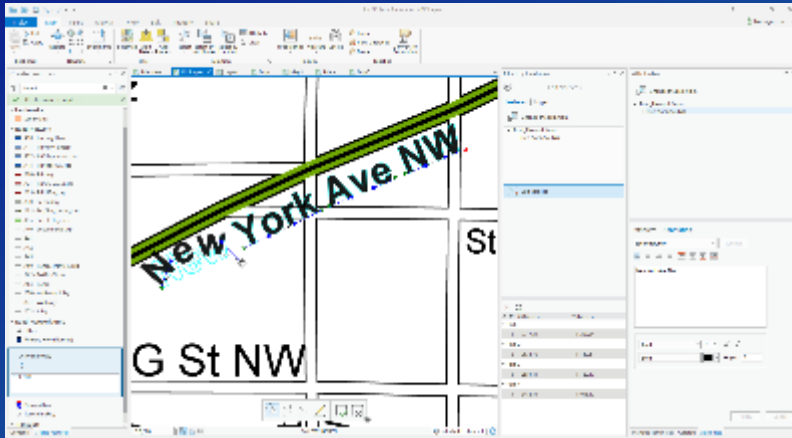


.NET API

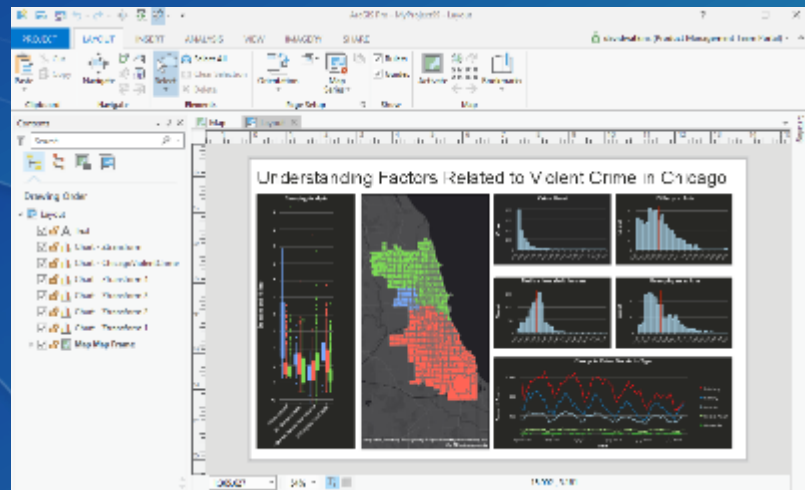


**What's new at 2.0?**

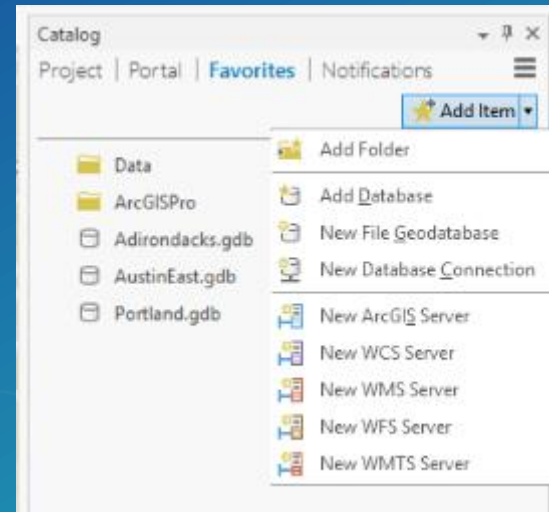
# ArcGIS Pro 2.0 Highlights



Create and Edit Annotation



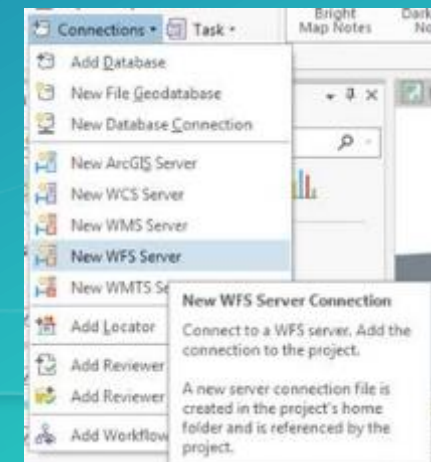
Dynamic Charts in Layout



Favorites



Measured Grids in Layout



WFS Standard Support

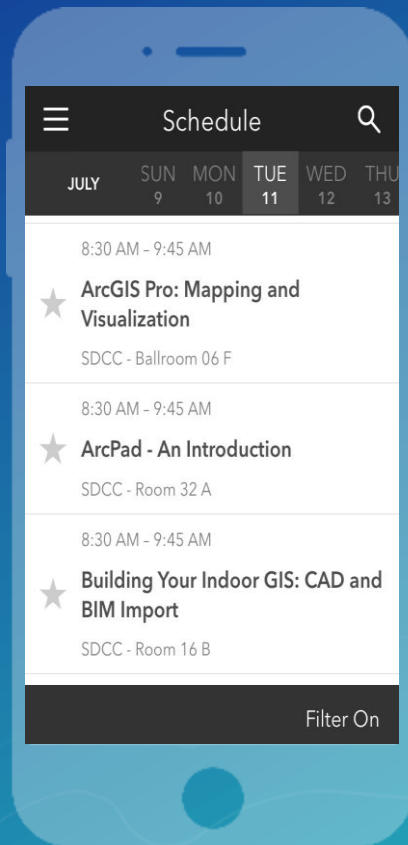


# Please Take Our Survey on the Esri Events App!

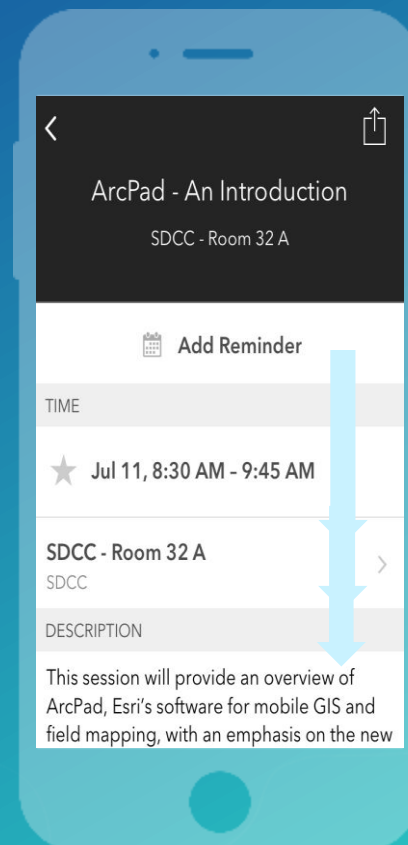
**Download the Esri Events app and find your event**



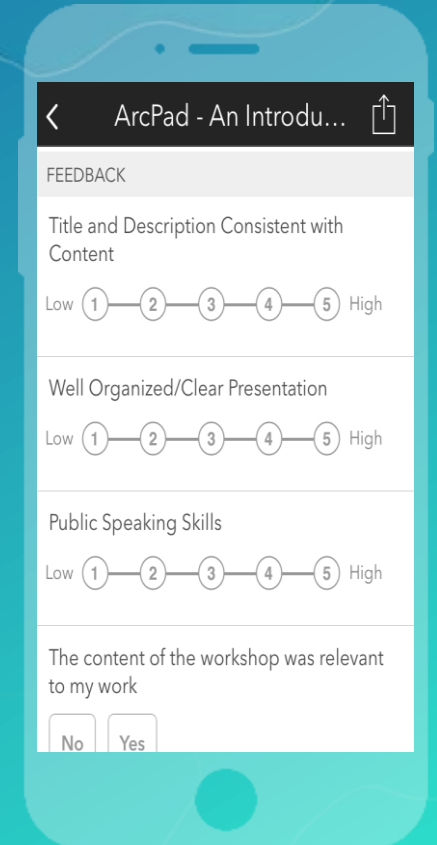
**Select the session you attended**



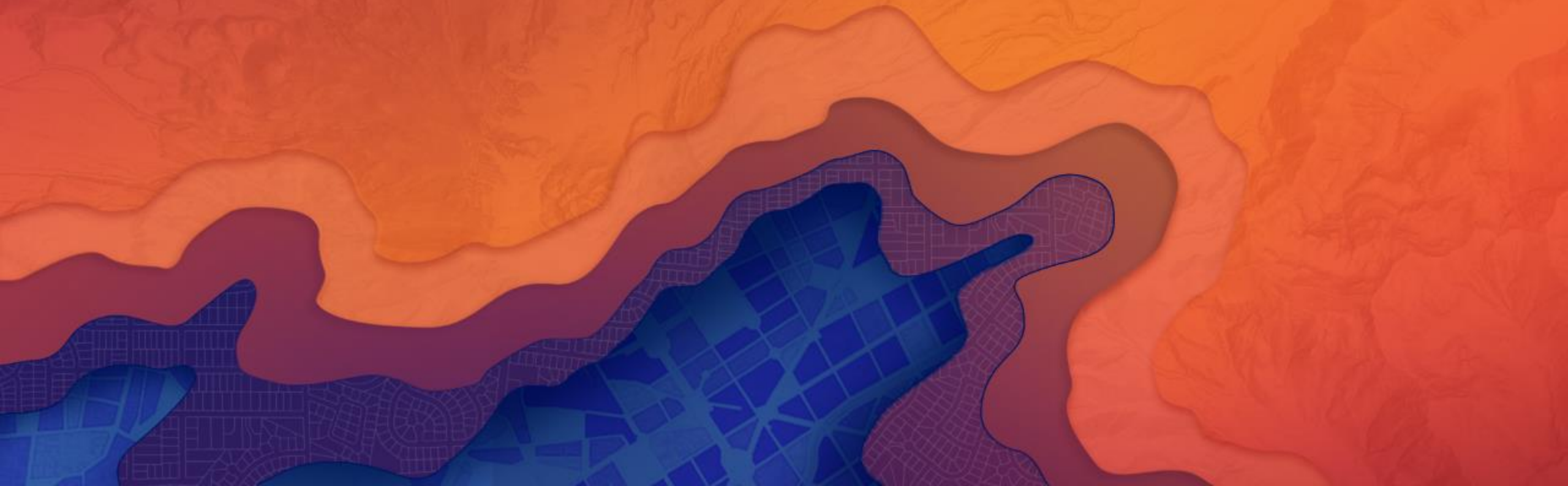
**Scroll down to find the survey**



**Complete Answers and Select "Submit"**



**Questions?**





esri

THE  
SCIENCE  
OF  
WHERE