

Collector: Authoring Maps for Offline Data Collection

Morgan Zhang

Kevin Burke

What am I using

- ArcGIS Online organization account
- ArcGIS Server token secured feature service
- Hosted feature services
- ArcGIS.com web maps
- ArcGIS.com groups
- Collector for ArcGIS

The screenshot displays three overlapping ArcGIS Desktop windows. The 'Workspace Domains' window shows a table of domains with 'YesNo' selected. The 'Feature Class Properties' window shows the 'Fields' tab with a list of fields including 'NAME', 'ADDRESS', 'DATEOCCUR', 'PROPTYPE', 'CITATYPE', 'FINE', 'VIOLREASON', 'ADDCOMMENT', 'NOTIFIED', 'GlobalID', 'Shape', and 'OBJECTID'. The 'Service Editor' window shows the 'Feature Access' tab with REST and SOAP URLs and checked operations for Create, Delete, Query, Sync, and Update.

Workspace Domains

Domain Owner	Domain Name	Description
DBO	Year	
DBO	Yes No Indicator	
DBO	Yes No Numeric	
DBO	YesNo	A yes/no indicator
DBO	YesNoDomain	A Yes/No Boolean domain
DBO	Yield Collection	

Domain Properties:

Field Type	Text
Domain Type	Coded Values
Split policy	Default Value
Merge policy	Default Value

Coded Values:

Code	Description
Yes	Yes
No	No

Feature Class Properties

Field Name	Data Type
NAME	Text
ADDRESS	Text
DATEOCCUR	Date
PROPTYPE	Text
CITATYPE	Text
FINE	Text
VIOLREASON	Text
ADDCOMMENT	Text
NOTIFIED	Text
GlobalID	Global ID
Shape	Geometry
OBJECTID	Object ID

Click any field to see its properties.

Field Properties

Field Name	Customer Notified
Alias	Yes
Allow NULL values	
Default Value	
Domain	YesNo
Length	50

Service Editor

5.us-east-1.elb.amazonaws.com (admin) Service Name: AGS_SDWaterViolation

Feature Access

REST URL: 5.us-east-1.elb.amazonaws.com/arcgis/rest/services/AGS_SDWaterViolation/FeatureServer

SOAP URL: 5.us-east-1.elb.amazonaws.com/arcgis/services/AGS_SDWaterViolation/MapServer/FeatureServer

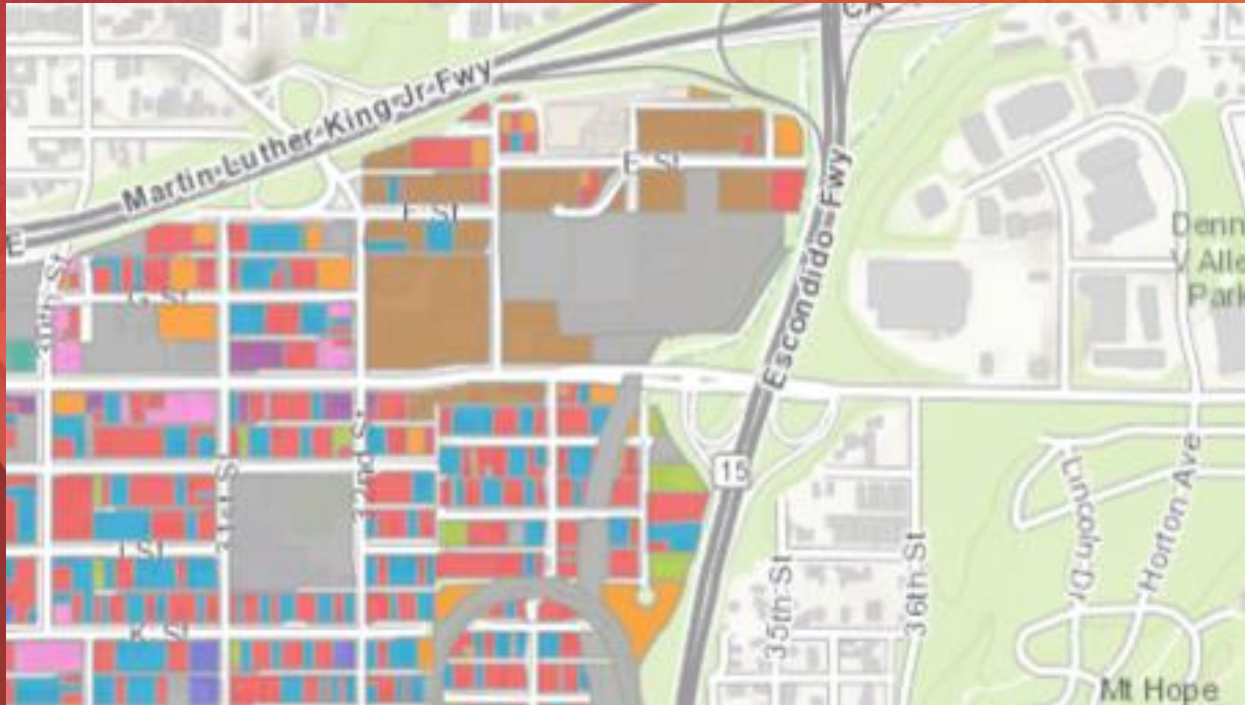
Operations allowed:

☒ Create ☒ Delete ☒ Query ☒ Sync ☒ Update

Properties

☒ Allow geometry updates

☐ Allow update of true curves



Demo

San Diego Water Violation map

What are some best practices?

1. **Leveraging your servers security and using a proxy**
2. **Ability to use multiple data sources**
3. **Naming your basemap**
4. **Configuring your app tools and settings**
5. **Sharing your maps and services**

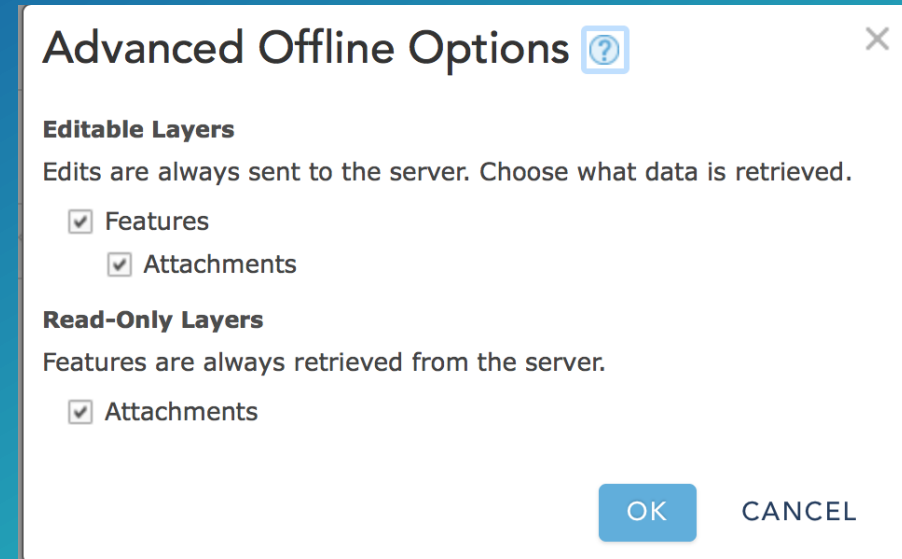
More best practice to share

- **Map for disconnected editing**

- All feature layers are sync-enabled (ArcGIS Organization hosted or on-premise Server)
- Server tiled map services with export tiles enabled
- Esri default basemap
- ArcGIS Online hosted tile layer

- **Advanced Offline Options**

- Hosted feature services
- ArcGIS for Server 10.4 feature services



Advanced Offline Options ⓘ

Editable Layers
Edits are always sent to the server. Choose what data is retrieved.

- ☒ Features
- ☒ Attachments

Read-Only Layers
Features are always retrieved from the server.

- ☒ Attachments

OK CANCEL

More best practice to share

- **Versioned data**

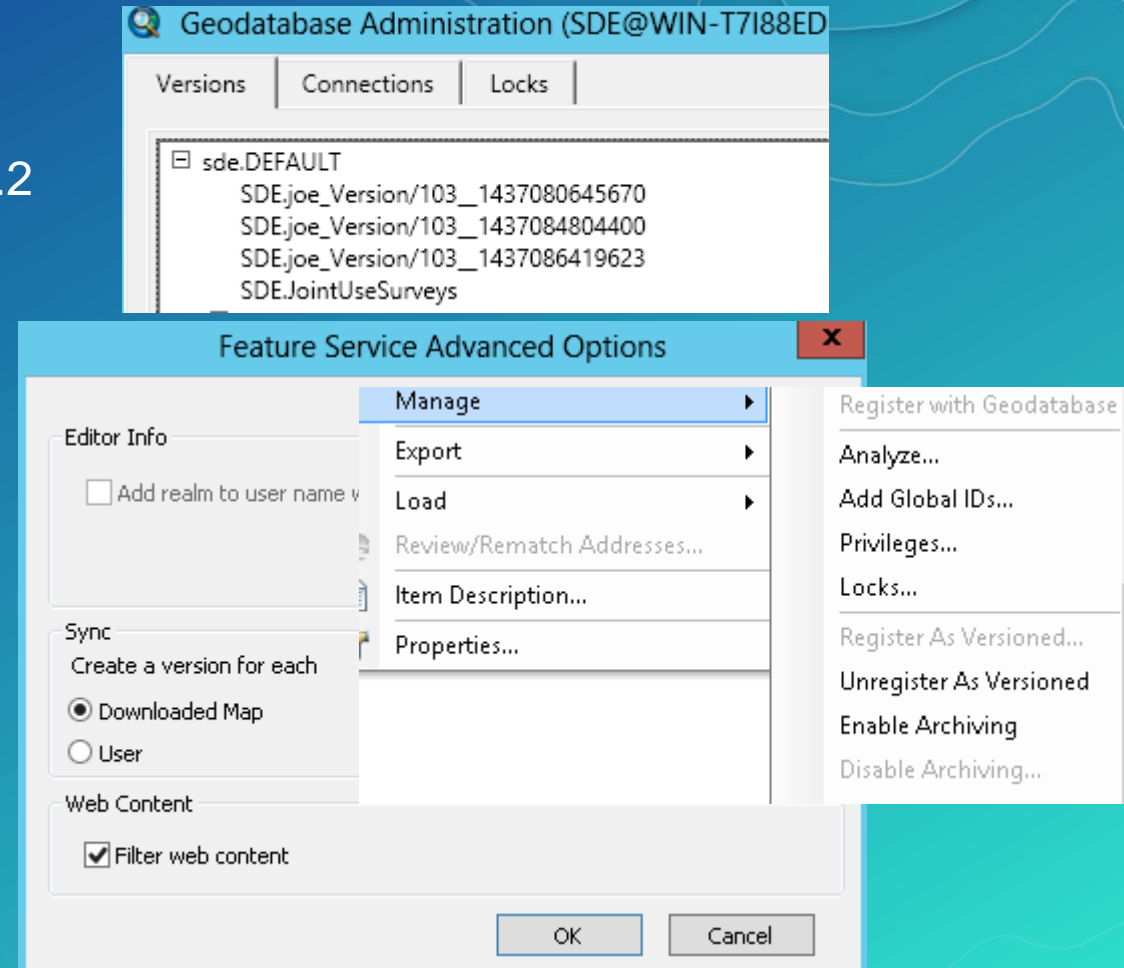
- Viewing versioned data supported with ArcGIS 10.2.2 for Server
- Edit versioned data offline requires 10.3.1 or a later release of ArcGIS for Server and a 10.3 or later release of enterprise geodatabase

- Help tutorial:

<http://server.arcgis.com/en/server/>

[latest/get-started/windows/](http://server.arcgis.com/en/server/latest/get-started/windows/)

[tutorial-create-offline-maps-with-versioned-data.htm](http://server.arcgis.com/en/server/latest/get-started/windows/tutorial-create-offline-maps-with-versioned-data.htm)



Please Take Our Survey on the Esri Events App!

Download the Esri Events app and find your event



Select the session you attended



Scroll down to find the survey



Complete Answers and Select "Submit"





esri

THE
SCIENCE
OF
WHERE