



# Operations Dashboard for ArcGIS: Monitoring Live Field Edits

Tif Pun and Mark Bockenbauer

# What you will see in this Demonstration

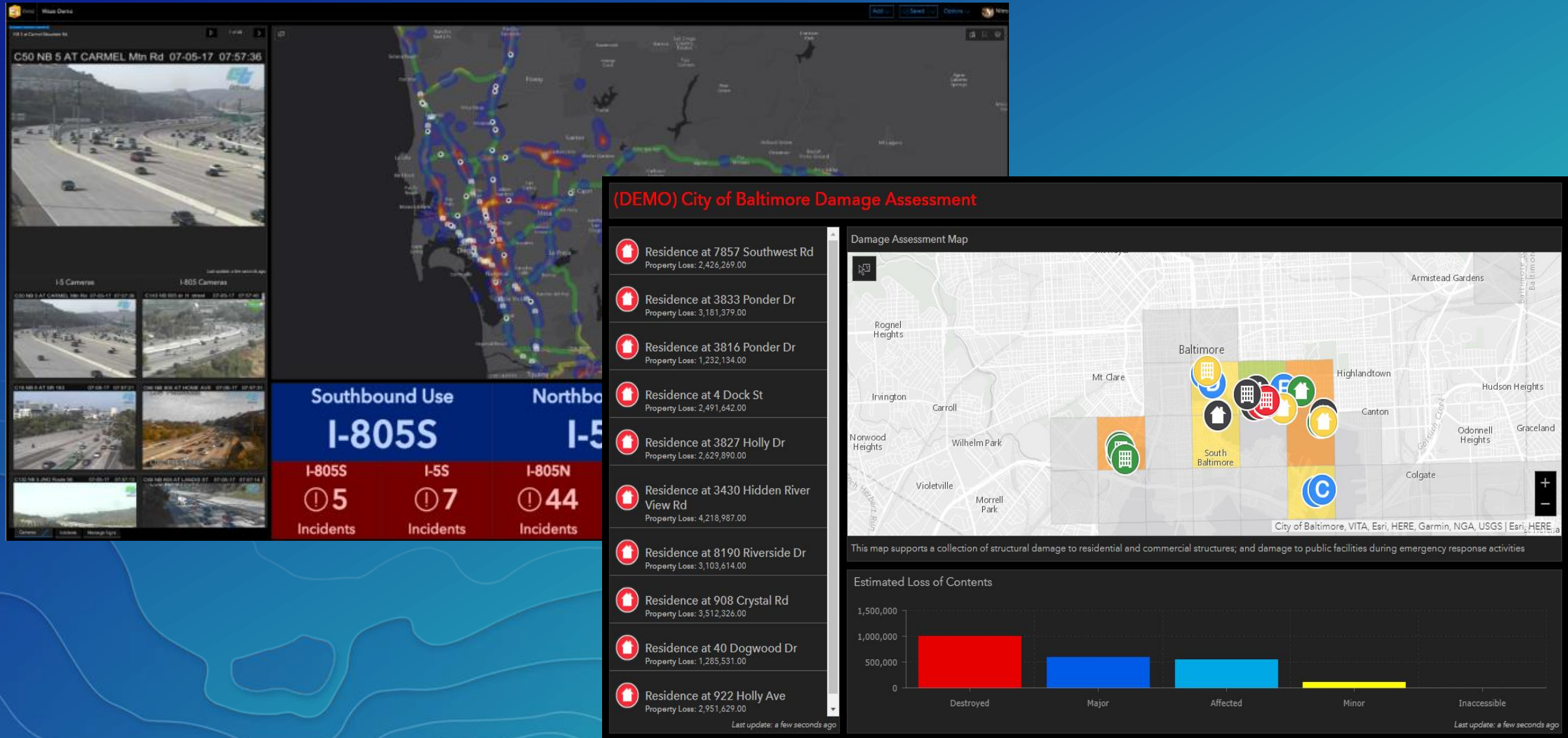
In this demonstration you will learn how to create a map from scratch that can be used in collector and Operations dashboard.

# Agenda

- Using ArcGIS Pro to create a feature service for use in Collector and Dashboard
  - Create Geodatabase and Feature Class with Domain
  - Enable Editor Tracking and Attachments
  - Define layer symbology
  - Publish Service
- Use the feature service in a Web map
  - Set Layer Refresh interval
  - Set Popup Properties
- Create Dashboard
  - Use Web map in dashboard
  - Create widgets
- Use map in Collector
  - Monitor Collector Edits with Dashboard



# Look ahead at what's new in Dashboard...

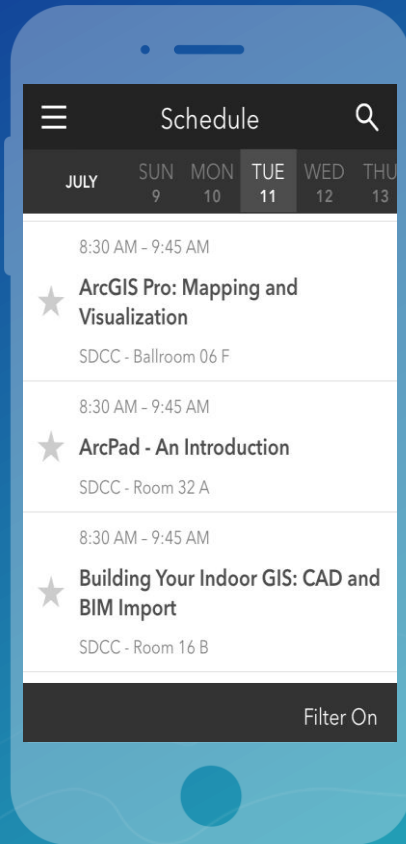


# Please Take Our Survey on the Esri Events App!

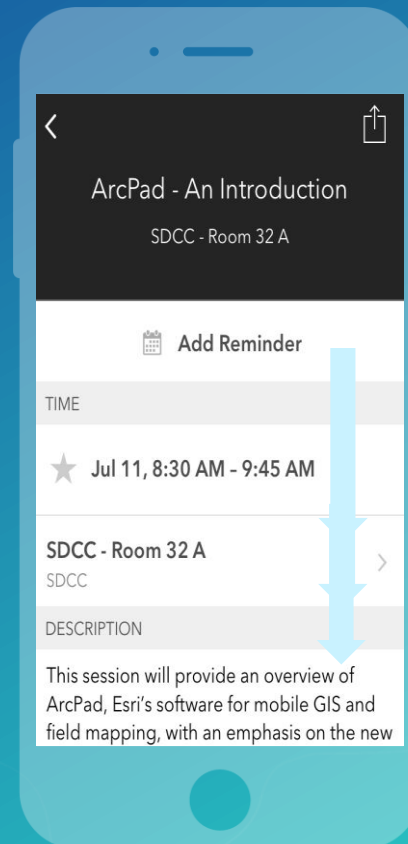
Download the Esri Events app and find your event



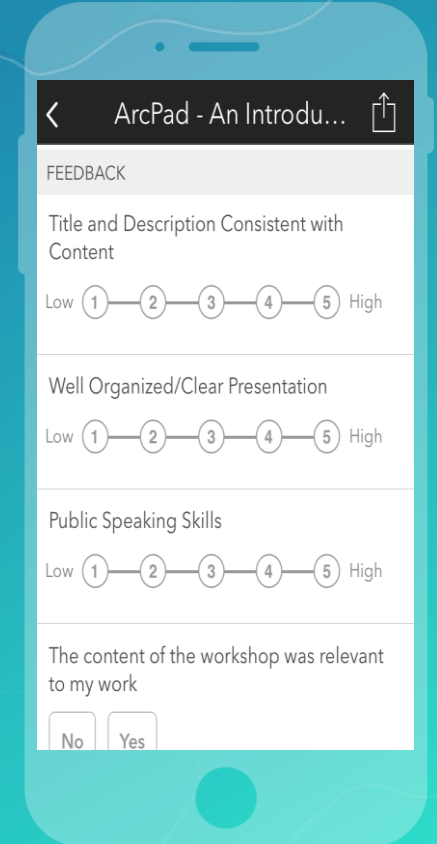
Select the session you attended



Scroll down to find the survey



Complete Answers and Select "Submit"







esri

THE  
SCIENCE  
OF  
WHERE