



ArcGIS for Public Transit Agencies: An Introduction

Jay Hagen – Solution Engineer

Shayla Martin – Account Manager

**GIS
INSPIRING
WHAT'S
NEXT**

Agenda

- **Common Challenges in Public Transit**
- **ArcGIS Solutions for Public Transit**
- **Demonstration: System Planning**
- **Demonstration: Field Data Collection and Public Engagement**
- **Public Engagement: Story Maps**
- **Recap—Questions & Answers**



Common Challenges

Shayla Martin

Common Challenges in Public Transit

Access



Equity



Assets



Communication



The background is a dark blue gradient with abstract geometric shapes in teal, orange, and light blue. The text is white and positioned on the left side of the slide.

Solutions for Public Transit

Jayson Hagen

Common Patterns of Use

Mapping & Visualization



Understand locations and relationships with maps and visual representations

Data Management



Collect, organize, and maintain accurate locations and details about assets and resources

Field Mobility



Manage and enable a mobile workforce to collect and access information in the field

Monitoring



Track, manage, and monitor assets and resources in real-time

Analytics



Discover, quantify, and predict trends and patterns to improve outcomes

Design & Planning



Evaluate alternative solutions and create optimal designs

Decision Support



Gain situational awareness, and enable information-driven decision making

Constituent Engagement



Communicate and collaborate with citizens and external communities of interest

Sharing & Collaboration



Empower everyone to easily discover, use, make, and share geographic information

Police & Emergency Management

- Crime Analysis
- Event Planner
- Crime Reporter
- Situational Awareness
- Field Interviewer
- Public Crime Map
- Incident Briefing
- Damage Assessment

Communication & Marketing

- Real-Time Vehicle Locator
- Story Maps
- AppStudio for ArcGIS
- Crowdsource Reporter
- Web Mapping Applications

Operations & Maintenance

- BIM
- Performance Monitoring Dashboard
- AVL Monitoring

**ArcGIS for
Public
Transit**

Planning, Scheduling, & System Development

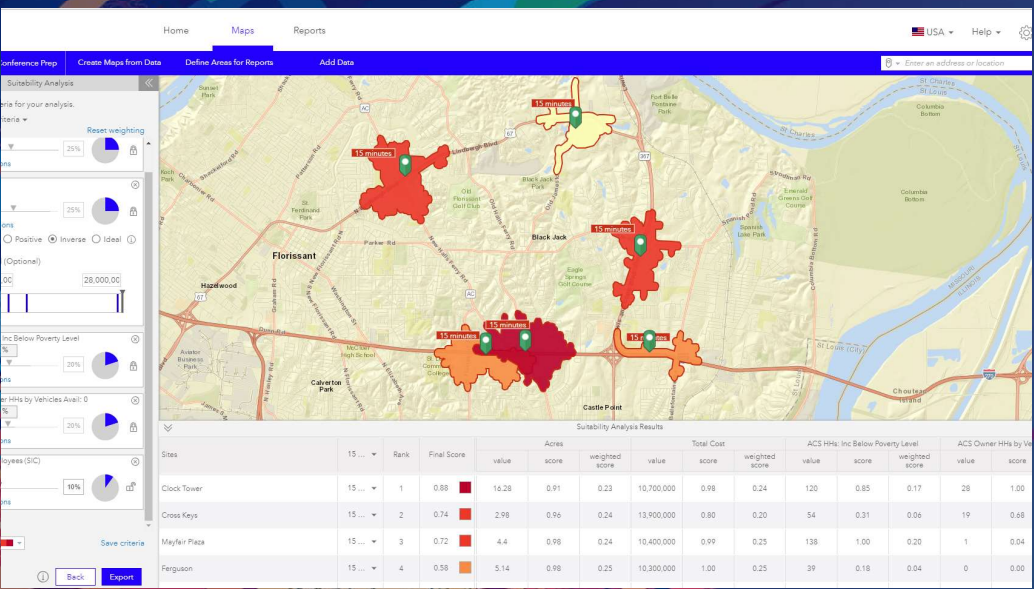
- GeoPlanner
- Title VI Demographic Assessment
- Living Atlas
- Community Analyst
- Insights

Economic Development

- Story Maps
- Live, Work, Locate
- Real Property Inventory
- Review Proposed Developments

Engineering & Asset Management

- Linear Referencing
- State of Good Repair
- Public Notification
- ADA Bus Stop Assessment
- Field Data Collection



Using ArcGIS for System Planning

Jayson Hagen

Common Patterns of Use

Mapping & Visualization



Understand locations and relationships with maps and visual representations

Data Management



Collect, organize, and maintain accurate locations and details about assets and resources

Field Mobility



Manage and enable a mobile workforce to collect and access information in the field

Monitoring



Track, manage, and monitor assets and resources in real-time

Analytics



Discover, quantify, and predict trends and patterns to improve outcomes

Design & Planning



Evaluate alternative solutions and create optimal designs

Decision Support



Gain situational awareness, and enable information-driven decision making

Constituent Engagement

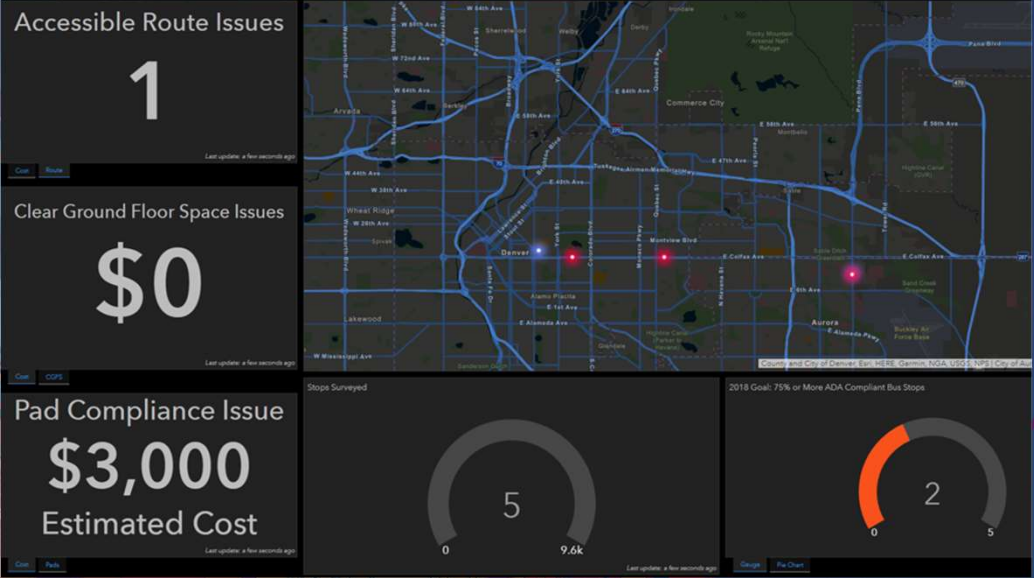


Communicate and collaborate with citizens and external communities of interest

Sharing & Collaboration



Empower everyone to easily discover, use, make, and share geographic information



Using ArcGIS for ADA Bus Stop Assessment

Jayson Hagen

Using the ArcGIS Platform to Solve a Common Business Problem

Scenario: The Esri Transit Agency needs to assess the ADA compliancy of our bus stops. Given our limited budget, we cannot improve every bus stop. Given the scope of the project, we want to prioritize those stops that are likely to serve the highest numbers of ADA passengers. As a good steward of public funds, the agency wants to be transparent in the process, and let taxpayers know that the agency is working toward improving mobility for everybody.

Issues we are facing:

- Difficulty assigning and coordinating field work.
- Bus stop assessment previously completed with paper forms, leading to issues with data input/integrity.
- No way to monitor progress and inform stakeholders.
- Difficulty in identifying stops with highest priority.
- No simple mechanism to inform the public and solicit feedback



Public Engagement – Story Maps

Shayla Martin

Public Engagement using Story Maps

- What is a Story Map?
- Skills needed?
- How can transit agencies use Story Maps?

Types of Story Maps

Story Map Tour
Sequential Narrative



Story Map Swipe
Comparing Two Maps



Story Map Side Accordion
Comparing Related Maps



Story Map Journal
Journal-style narrative



Story Map Spyglass
Comparing Two Maps



Story Map Bulleted
Comparing Related Maps



Story Map Basic
Displaying a single map



Story Map Shortlist
Curated List of POIs



Story Map Tabbed
Comparing Related Maps



Session Summary

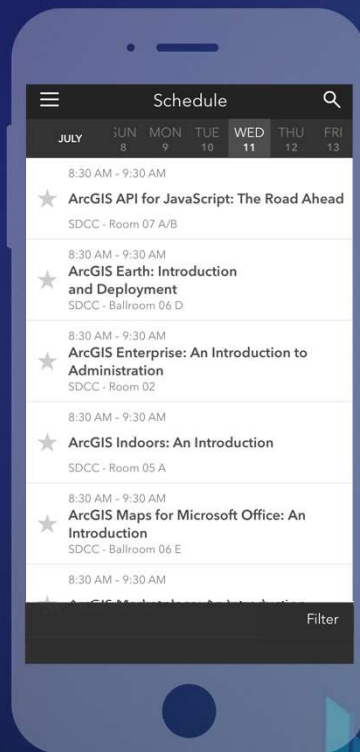
- Transit agencies face common challenges
- Tools for tackling those challenges
- Story Maps
- Q&A

Please Take Our Survey on the App

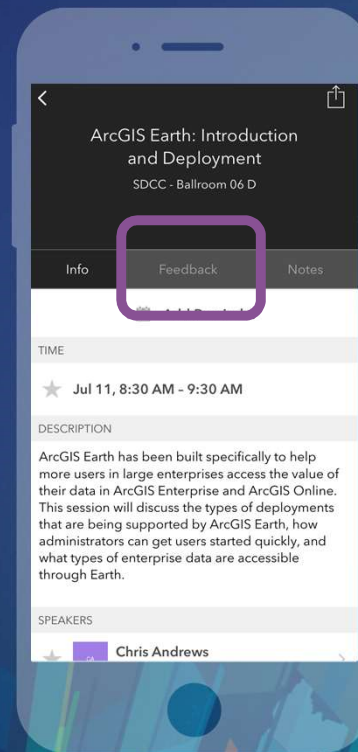
Download the Esri Events app and find your event



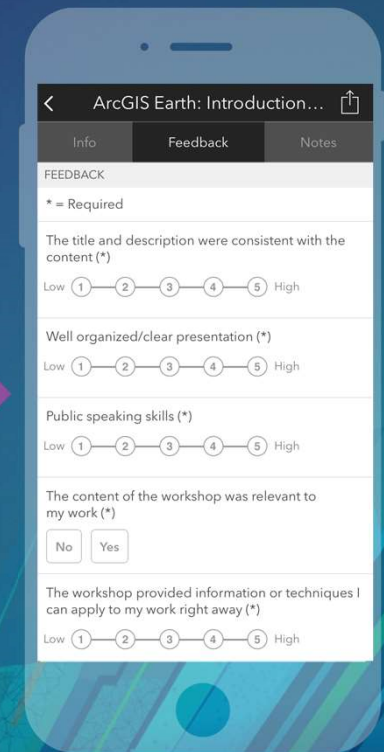
Select the session you attended



Scroll down to find the feedback section



Complete answers and select "Submit"



Public Transit Technical Sessions



bit.ly/2018UCtransit

Esri Public Transit Team
Contact Information

Shayla: smartin@esri.com

Jay: jhagen@esri.com



esri

THE
SCIENCE
OF
WHERE