



# Deploying Fire Service Maps and Apps for Local Government

Heather Eisan

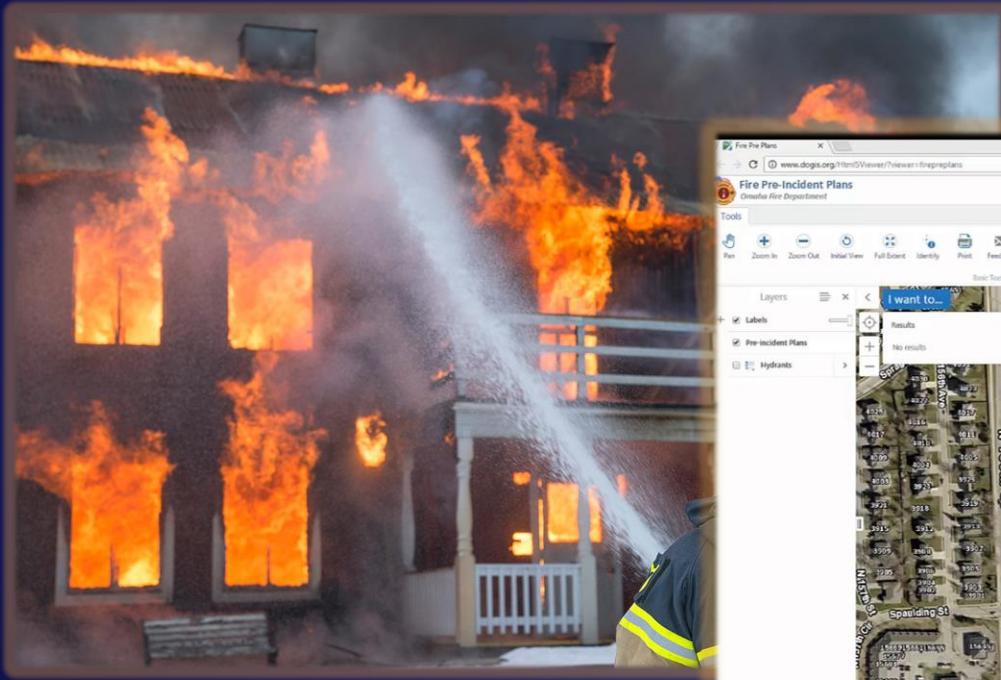
Walter Potts

# Agenda

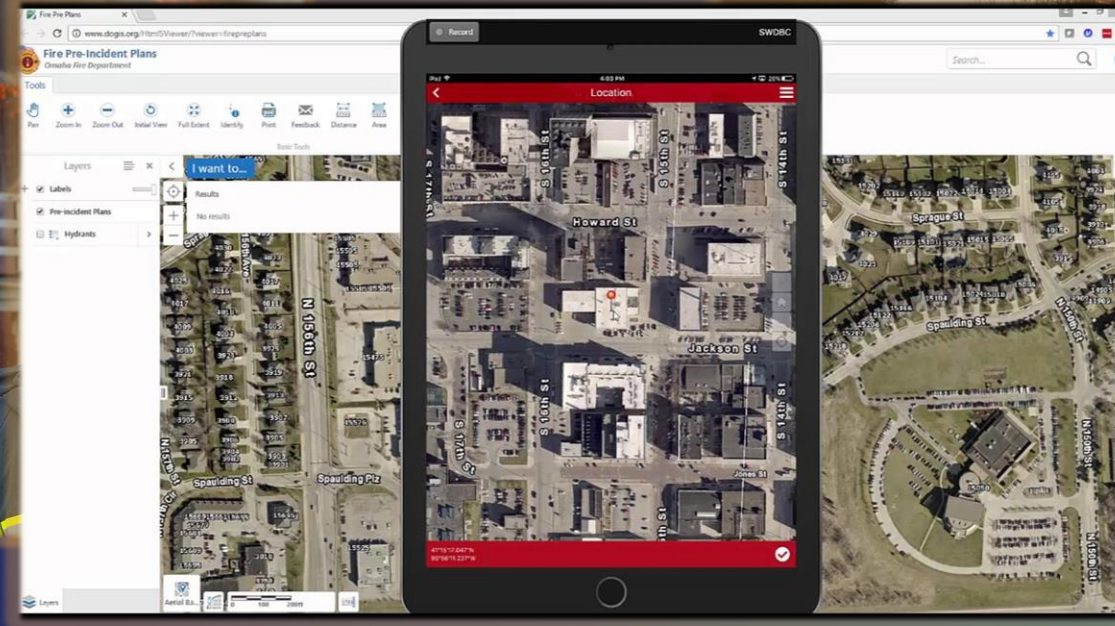
- Introduction to Local Government Solutions Program
- Fire Service Solution Overview
- Monitor Fire Incidents
- Fire Service Maps
- Getting Started
- Road Ahead, Questions, Resources



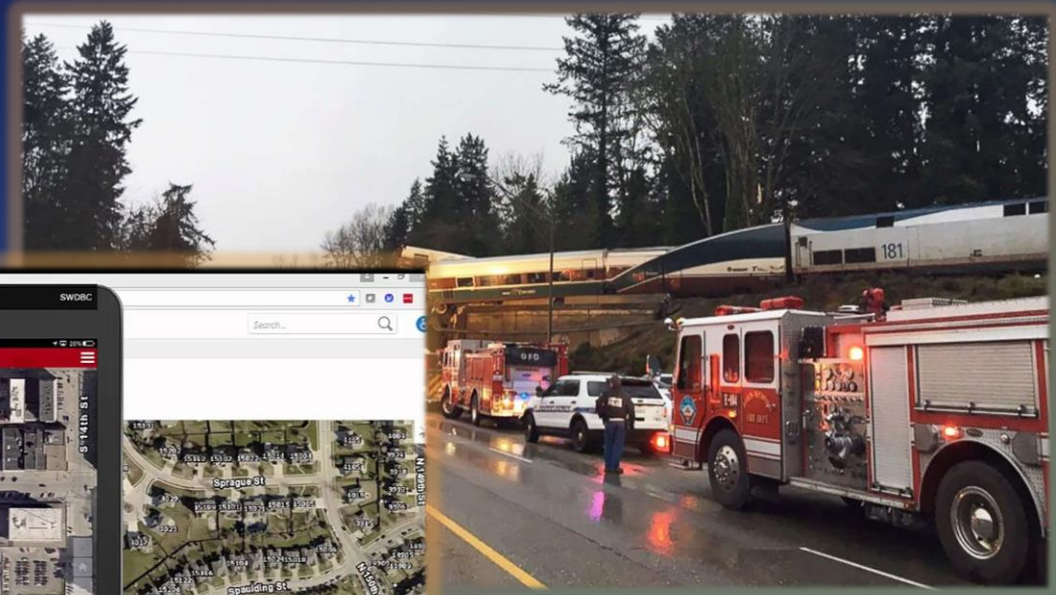
# Fire Service Industry is Evolving



Fire Suppression  
EMS Response  
Home Safety Inspection  
Code Compliance  
Training



Fire Fighter Safety  
Pre-Incident Planning  
Hydrant Inspection  
Mobile Incident Command  
Accreditation



Special Operations  
Hazmat Response  
Swift Water Rescue  
High Angle Rescue  
Special Events

# GIS Has Evolved

Your GIS is an Interconnected Platform

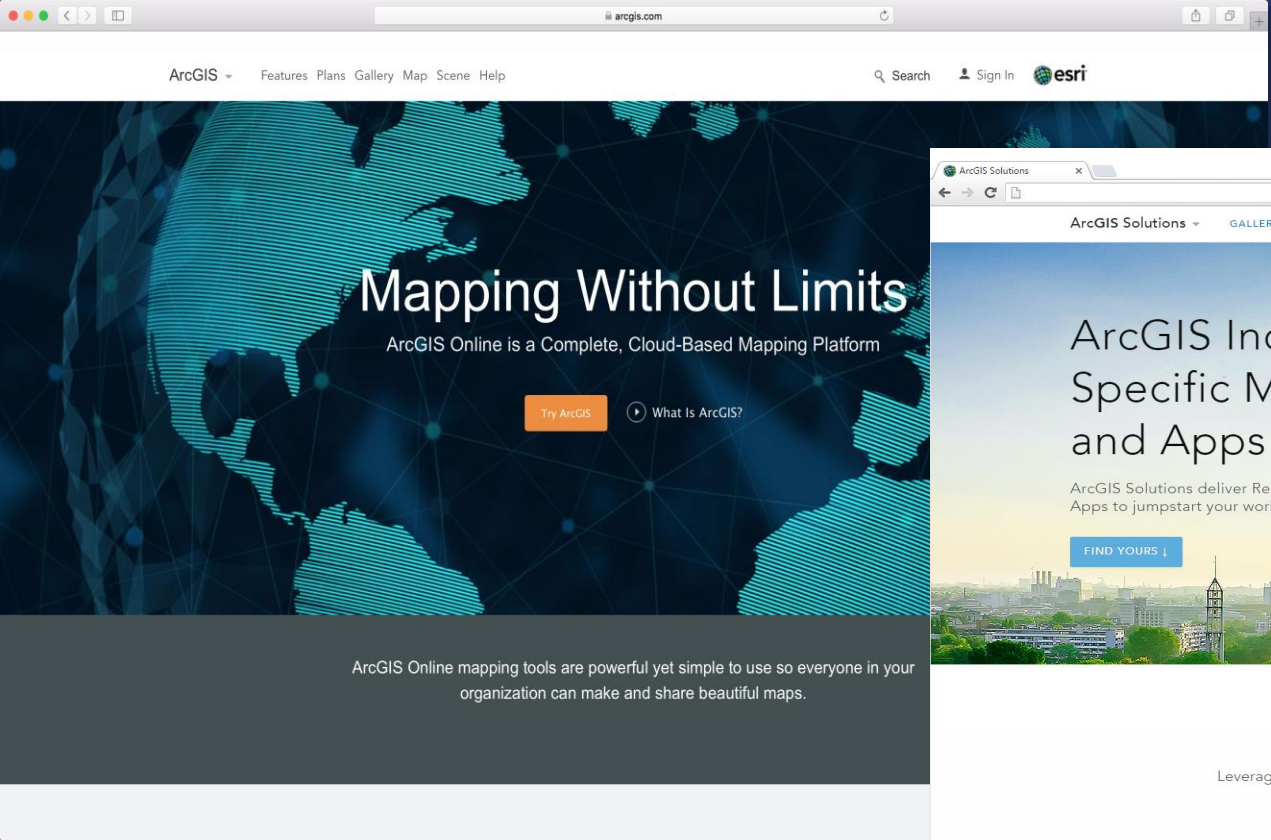


*Bringing Together Data, Technology, and People . . .*

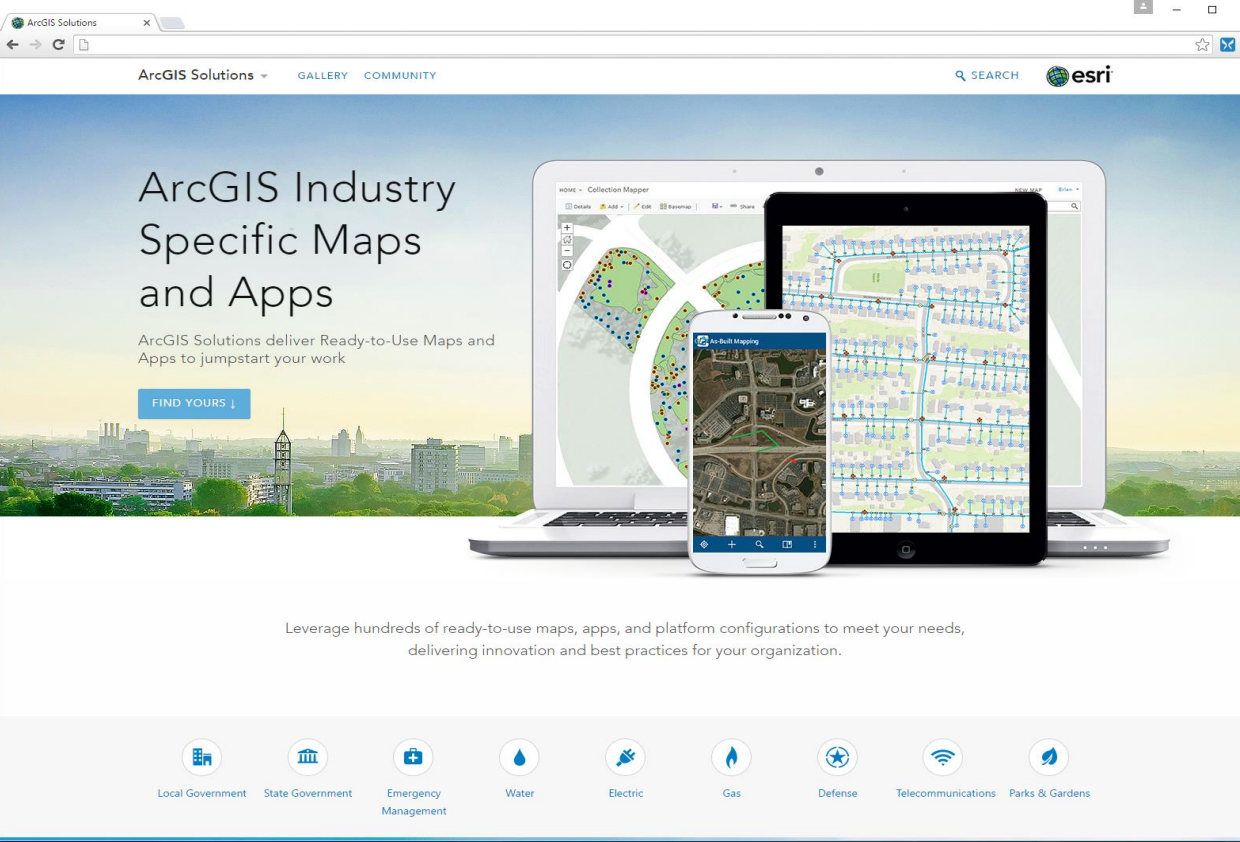
*. . . Creating a Framework for Solving Complex Problems*



# Turning Point



ArcGIS Online

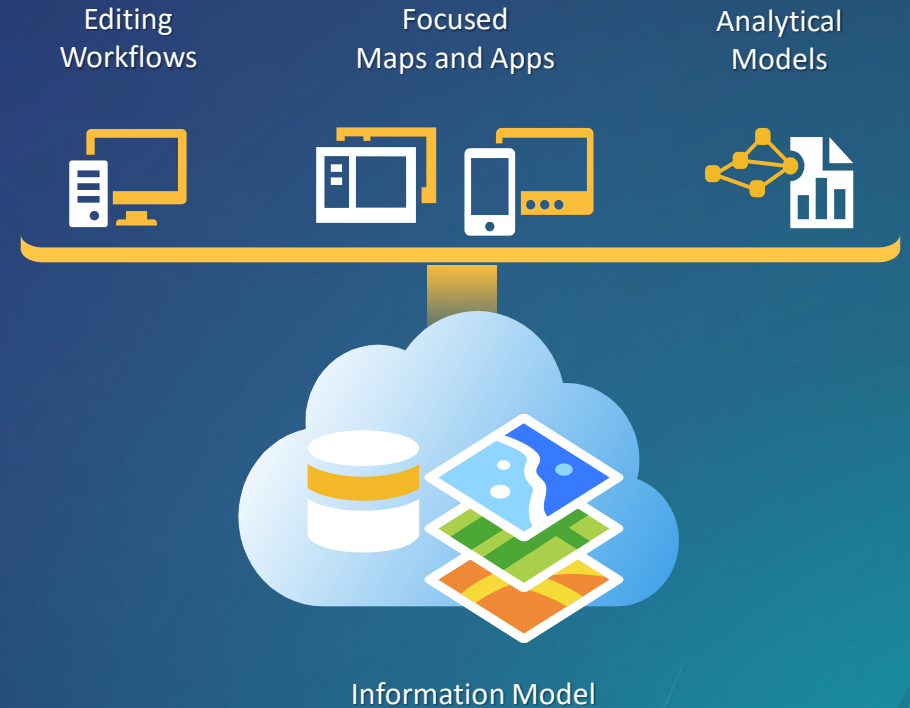


ArcGIS Solutions

# ArcGIS Solutions for Local Government

Improving local government operations and enhancing services provided to the public

- Collection of useful maps and apps
  - Configurable and extensible
  - Freely available and fully supported
- Community of users (2000+ Meetup members)
  - Best Practices / Implementation Support
- Network of Esri Services and Partner offerings
  - Help users implement, sustain and enhance

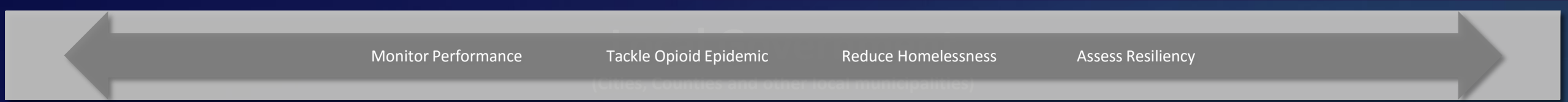


.....Available on-premise or in the cloud

# Mission

- Deliver maps and applications quickly throughout their organization
  - Roadmap for standard capabilities, improve service delivery, expand reach, innovation....
- Stay current with future releases / avoid legacy technology
  - Save time and money, leverage new ArcGIS offerings, focus on complex or unique problems....
- Unlock geospatial platform so it can be leveraged by many
  - Mitigate many organizational challenges, maximize technical expertise....
- Leverage the collective knowledge of the entire community
  - Best practices, industry tradecraft....





Monitor Performance

Tackle Opioid Epidemic

Reduce Homelessness

Assess Resiliency

**Elections**

- Share Election Results
- Early Voting
- Election Polling Places
- Polling Wait Times
- Election Results
- Historical Election Results Gallery
- My Elected Representative

**Land Records**

- Manage Assessment Roll
- Determine Property Value
- Respond to Appeals
- Public Land Survey Earning
- Inform Public

- Tax Map Book
- Community Parcels
- Determine Property Value
- Value Analysis Dashboard
- Tax Reverted Properties
- Respond to Appeals
- Property Tax Assessment Appeal
- Inform the Public
- Tax Parcel Viewer
- My Tax Distribution
- School Locator
- Residential Comp Finder

**Public Health**

- Tackle Opioid Epidemic
- Reduce Homelessness
- Naloxone Deployment Reporter
- Drug Activity Reporter
- Drug Drop-off Locator
- Drug Drop-off Calculator
- Health Resource Inventory
- Opioid Treatment Locator
- Pain Management Locator
- Opioid Response Dashboard
- Reduce Homelessness
- Homeless Point-in-Time Counts
- Homeless Service Locator
- Homeless Activity Reporter

**Law Enforcement**

- Organize Foundational Data
- Perform Crime Analysis
- Develop Tactical Plans
- Inform the Public
- Near Repeat Analysis
- Develop Tactical Plans
- Tactical Operation Planner
- Tactical Operation Dashboard
- Tactical Operation Surveillance
- Inform the Public
- Public Crime Map
- Neighborhood Crime Reports

**Fire Service**

- Improve Fire Operations
- Develop Pre-Incident Plans
- Fire Incident Dashboard
- Increase Fire Prevention
- Fire Hydrant Inspection
- Respond to Emergencies
- AED Locator
- AED Inventory
- Develop Pre-Incident Plans
- Target Hazard Analysis
- Pre-Incident Plan Coordinator
- Pre-Incident Plan Field Inventory
- Pre-Incident Plan Dashboard
- Pre-Incident Plan Locator
- Increase Fire Prevention
- Fire Safety Survey
- Respond to Emergencies
- Emergency Assistance
- Warming/Cooling Center Locator
- Warming/Cooling Center Reporter

**Public Works**

- Maintain Public Road Network
- Promote Public Parking
- Reduce Traffic Fatalities
- Road Maintenance Agreements
- Engage the Public
- Respond to Emergencies
- Maximize Capital Investments
- Reduce Traffic Fatalities
- Crash Analysis
- High Injury Network Locator
- Vision Zero
- Fatal and Serious Crash Dashboard
- Engage the Public
- Citizen Problem Reporter
- My Trash Services
- Adopta
- Respond to Emergencies
- Flood Planning
- SnowCOP
- Maximize Capital Investments
- Capital Improvement Plan
- Capital Project Dashboard
- Capital Project Journals
- Capital Project Locator
- Capital Project Plans
- Capital Project Reports
- Capital Project Review
- External Agency Projects
- Pavement Moratoriums
- Participatory Budgeting

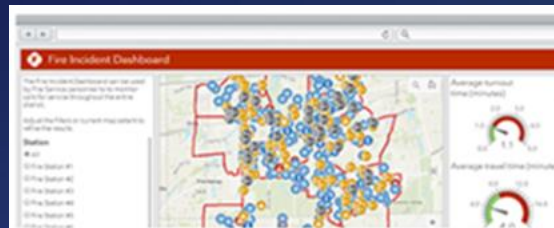
**Planning and Development**

- Manage Address Information
- Stabilize Neighborhoods
- Promote Vibrant Communities
- Engage Public
- Manage Community Events
- Community Addresses
- Visualize Proposed Developments
- Neighborhood Early Warning
- Blight Status
- Demolition Tracker
- Address Crowdsourcing
- Mortgage Counseling Locator
- Administrative Area Data Management
- Code Violation
- Promote Vibrant Communities
- Engage Public
- Construction Activity Tracker
- Site Selector
- Park Locator
- Land Use Inquiry
- Public Comment
- Floodplain Inquiry
- Public Notification
- Incentive Zones
- Photo Survey
- My Neighborhood Services
- Manage Community Events
- Entire Organization
- Events Calendar
- Performance Management
- Events Permit
- Performance Management
- Events Permit Review
- Events Site Map
- Events Coordination
- Events Map Gallery
- Visualize Proposed Developments
- Local Government 3D Scenes
- 3D Public Survey
- Visualize Proposed Developments
- Visibility Assessment
- Calculate Solar Radiation
- Shadow Impact Analysis
- ROW Permit
- ROW Permit Manager
- ROW Permit Dashboard
- ROW Permit Review
- ROW Permit Locator
- ROW Permit Public Comment



# Fire Service Solutions

- Understand trends
- Analyze risks
- Develop plans
- Monitor inspections
- Allocate resources effectively
- Protect human life and property



Monitor Fire Incidents



Identify Target Hazards



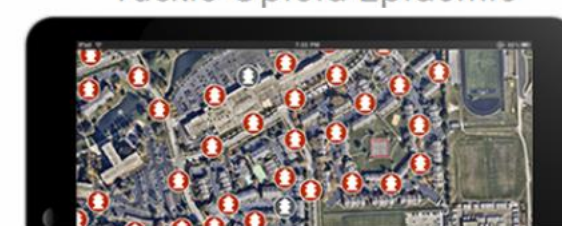
Develop Pre-Incident Plans



Tackle Opioid Epidemic



Produce Fire Response Maps



Inspect Fire Flow



Inventory Defibrillators

A collection of maps and apps used by fire personnel to inventory defibrillators that treat life threatening heart conditions and share this information with the public.



Conduct Fire Safety Surveys

Fire Safety Survey can be used by fire personnel to conduct dwelling fire safety surveys that are a part of a community's risk reduction program.

ArcGIS Solutions

ArcGIS Solutions GALLERY COMMUNITY

SEARCH esri

# ArcGIS Industry Specific Maps and Apps

ArcGIS Solutions deliver Ready-to-Use Maps and Apps to jumpstart your work

FIND YOURS ↓

Leverage hundreds of ready-to-use maps, apps, and platform configurations to meet your needs, delivering innovation and best practices for your organization.

- Local Government
- State Government
- Emergency Management
- Water
- Electric
- Gas
- Defense
- Telecommunications
- Parks & Gardens

Show Me!

## What are Fire Service Maps?

- A configuration of ArcGIS Pro that can be used by mapping technicians.
- Create station wall maps and run books for each fire response district.



# What is a Fire Run Book?

- Author up to date hard copy Run Books for individual stations or entire fire response district
- Contains cover page, index page, street index and map book pages
- Provided in both landscape and portrait orientations
- Use map series to produce map book
- Python scripts for generating street index and binding PDF's into map book

# What is a Station Wall Map?

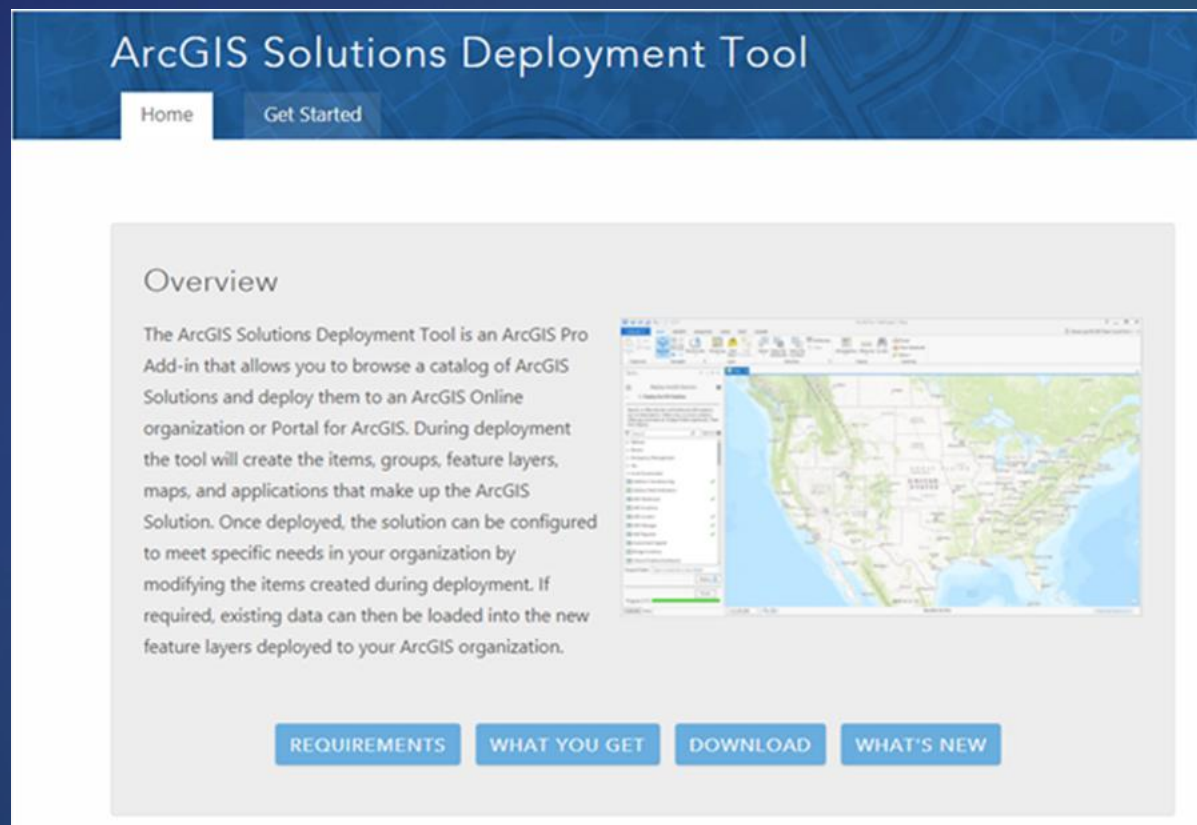
- **Large-format wall maps of each fire response district**
- **Provides navigation and general reference**
- **Ability to update data and generate new wall maps**
- **Use map series to produce multiple wall maps**

# How do I get started?

Automated Solution Deployment

- Deploy solutions quickly
  - Add-In to ArcGIS Pro
  - One-time install
  - Deploy most solutions in a single click
  - Deploy to your portal

<http://solutions.arcgis.com/shared/help/deployment-tool/>



## ArcGIS Solutions Deployment Tool

Home Get Started

### Overview

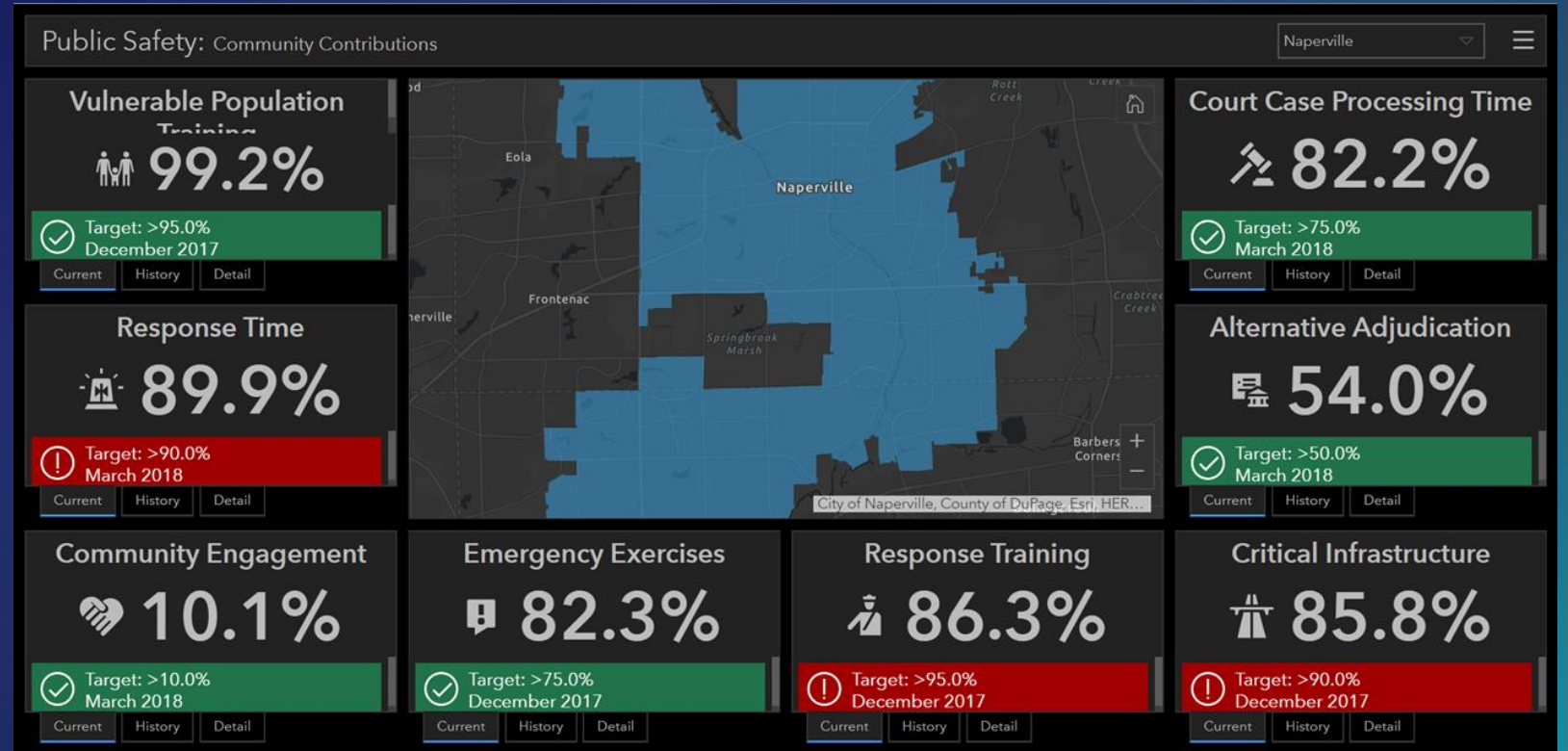
The ArcGIS Solutions Deployment Tool is an ArcGIS Pro Add-in that allows you to browse a catalog of ArcGIS Solutions and deploy them to an ArcGIS Online organization or Portal for ArcGIS. During deployment the tool will create the items, groups, feature layers, maps, and applications that make up the ArcGIS Solution. Once deployed, the solution can be configured to meet specific needs in your organization by modifying the items created during deployment. If required, existing data can then be loaded into the new feature layers deployed to your ArcGIS organization.

REQUIREMENTS WHAT YOU GET DOWNLOAD WHAT'S NEW



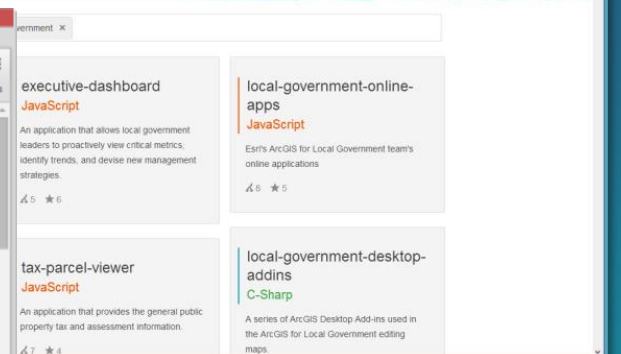
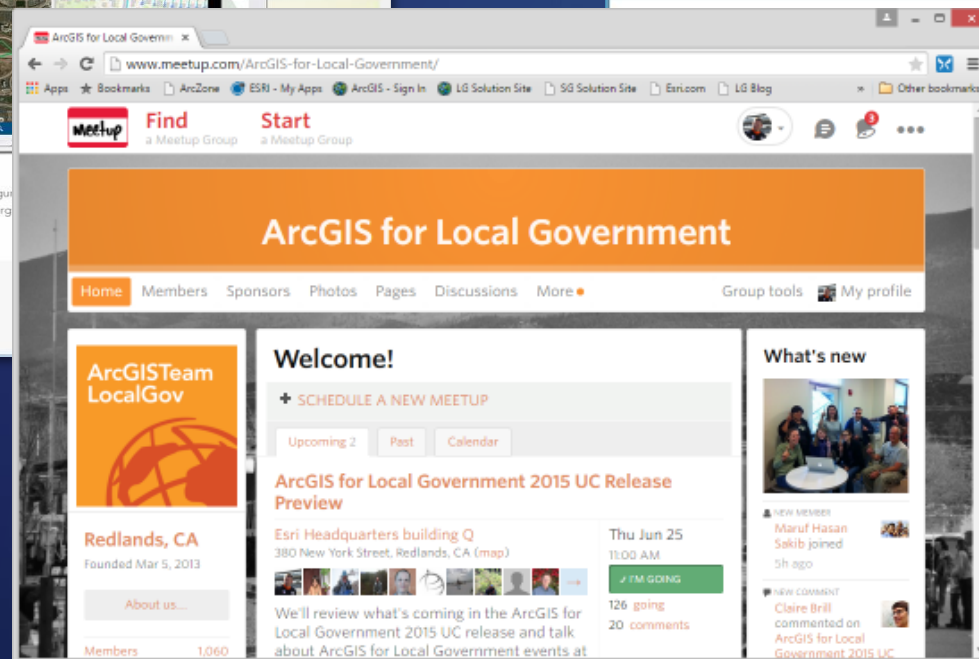
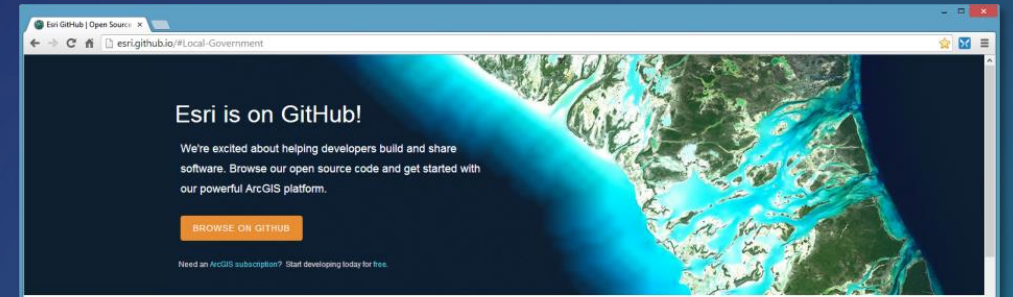
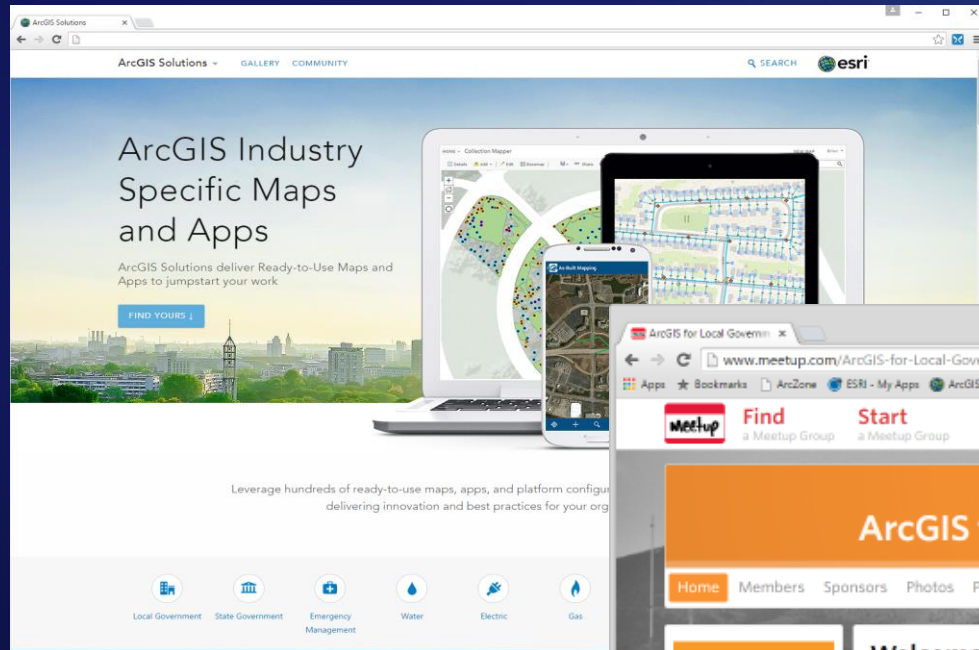
# Road Ahead

- Simply, simplify, simplify
- Analytics
- Special Events



# The Community

It's not just about the technology



# See Us Here

| WORKSHOP   | LOCATION  | TIME FRAME   |
|--|---|--|
| <ul style="list-style-type: none"><li>• ArcGIS Pro: Producing Fire Run Books and Station Wall Maps</li></ul>           | <ul style="list-style-type: none"><li>• SDCC Demo Theatre 16</li></ul>                            | <ul style="list-style-type: none"><li>• Thursday, July 12<br/>12:15am – 1:00 pm</li></ul>  |
| <ul style="list-style-type: none"><li>• Pre-Incident Planning Maps and Apps: An Introduction</li></ul>                 | <ul style="list-style-type: none"><li>• SDCC Demo Theatre 16</li></ul>                            | <ul style="list-style-type: none"><li>• Thursday, July 12<br/>11:15am – 12:00 pm</li></ul> |
| <ul style="list-style-type: none"><li>• Combating the Opioid Epidemic and Reducing Homelessness Using ArcGIS</li></ul> | <ul style="list-style-type: none"><li>• SDCC Room 16 A</li></ul>                                  | <ul style="list-style-type: none"><li>• Thursday, July 12<br/>1:00pm – 2:00 pm</li></ul>   |
| <ul style="list-style-type: none"><li>• ArcGIS Solution Island</li></ul>   | <ul style="list-style-type: none"><li>• SDCC Exhibit Hall – next to the Esri Info booth</li></ul> | <ul style="list-style-type: none"><li>• Wednesday, July 11<br/>10:00am – 2:00pm</li></ul>  |



# Thank you

Be innovative, aware, and know you are not alone

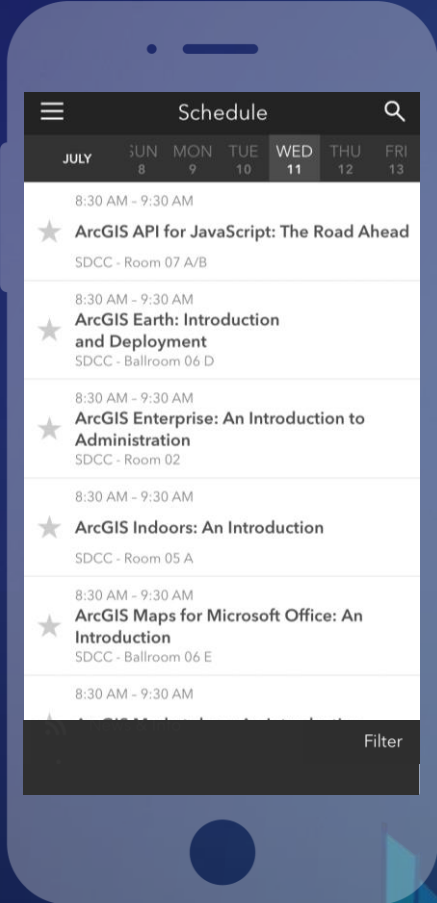
-  <http://solutions.arcgis.com/#Local-Government>
-  <http://meetup.com/ArcGIS-for-Local-Government/>
-  [@ArcGISLocalGov](https://twitter.com/ArcGISLocalGov)
-  <http://esri.github.com>

# Please Take Our Survey on the App

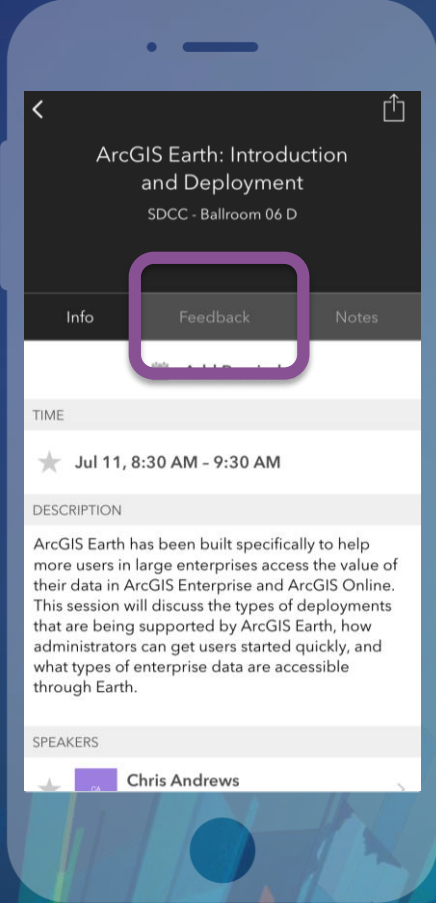
Download the Esri Events app and find your event



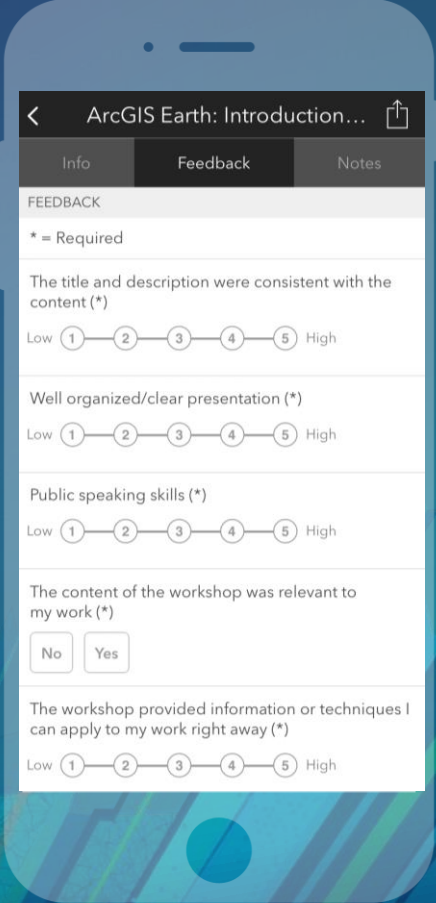
Select the session you attended



Scroll down to find the feedback section



Complete answers and select "Submit"





**esri**

**THE  
SCIENCE  
OF  
WHERE**