



ArcGIS Solutions for Water Utilities

An Introduction

Howard Crothers

Mike Miller

Joel Smith

An abstract graphic on the right side of the slide depicts a water utility system. It features a topographic map overlay on a blue background, with various colored lines and shapes representing pipes, tanks, and infrastructure. The colors include shades of blue, orange, red, and green. The overall style is modern and technical.

**GIS
INSPIRING
WHAT'S
NEXT**

ArcGIS Solutions for Water Utilities

- **A collection of focused apps and capabilities for:**
 - **Water Distribution**
 - **Wastewater**
 - **Stormwater**

ArcGIS Solutions for Water Utilities

- **Free**
- **Supported**
- **Updated and enhanced**
- **Open source**
- **10+ years of evolution**
 - **With water utility needs and ArcGIS advancements**

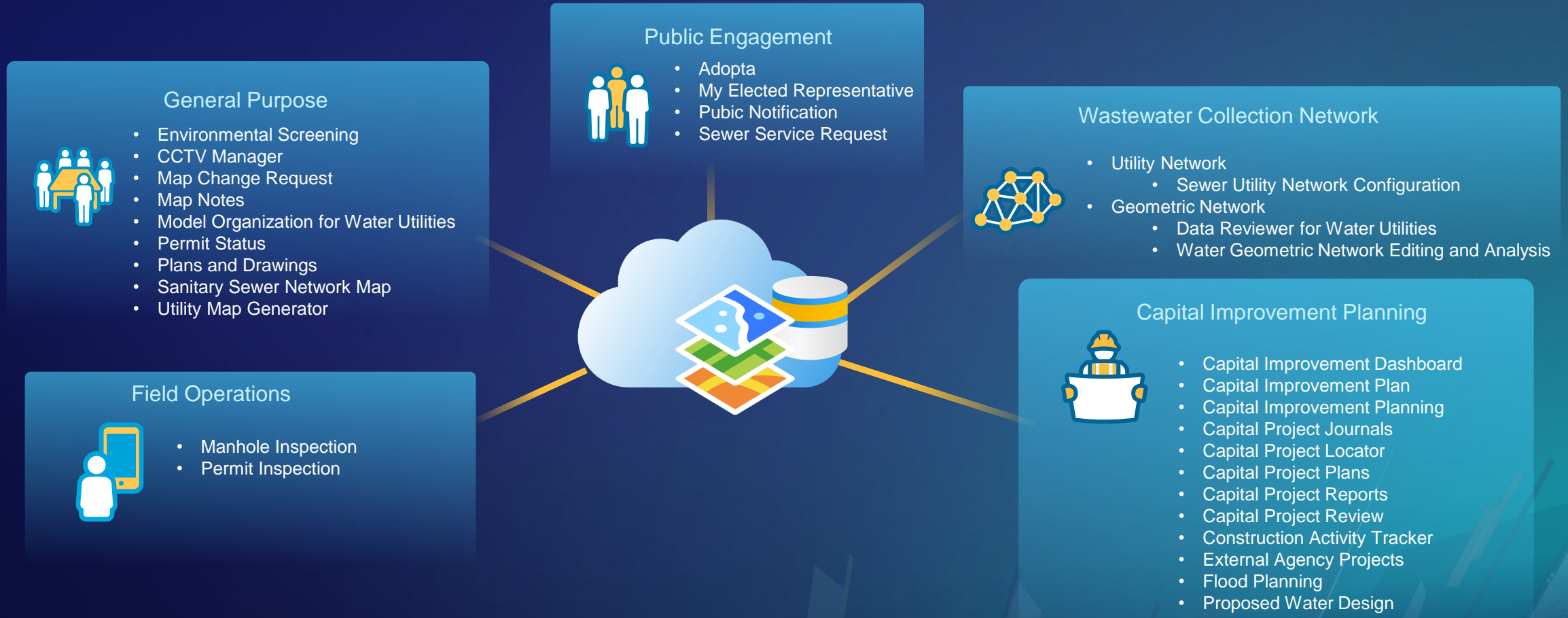
Today You Have Many Options for Deploying ArcGIS for Water Utilities

- How to represent your assets
- Which parts of your organization to enable
- What workflows to optimize
- How to engage your stakeholders
- Whether to deploy everything or pieces

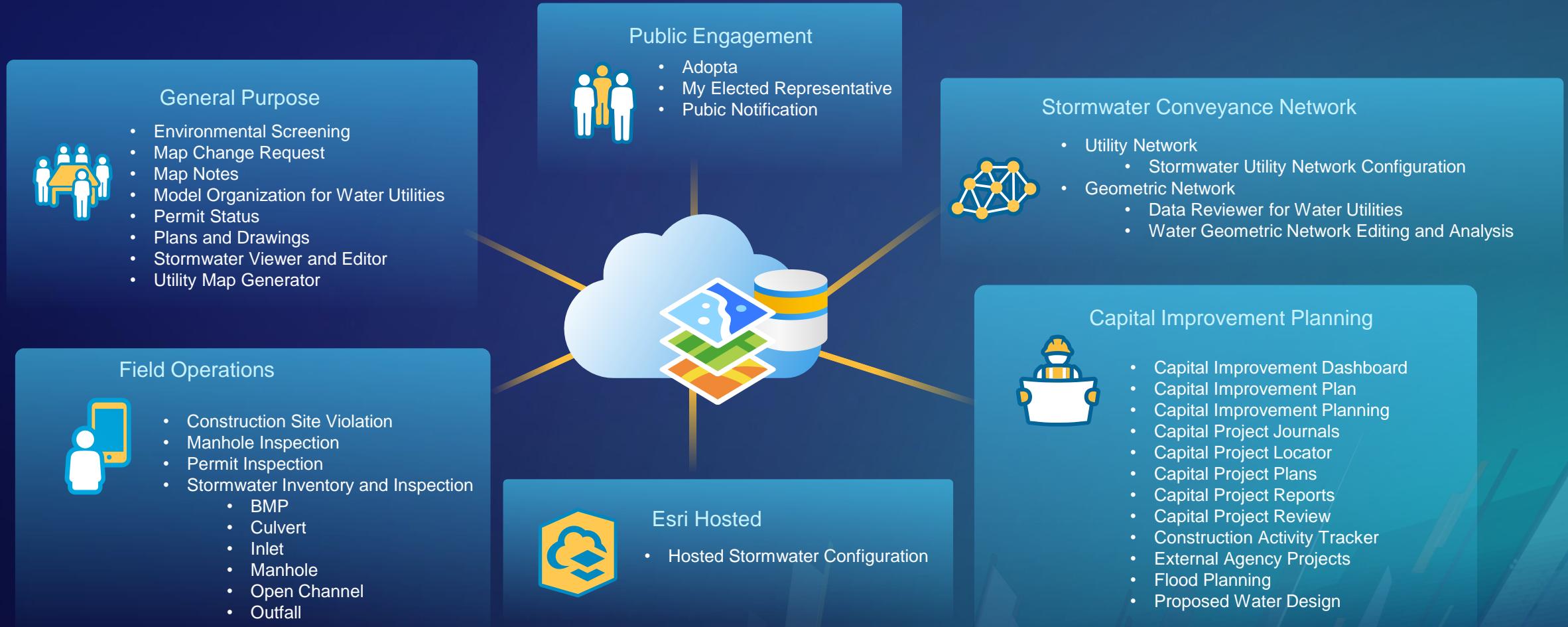
App and Capability Configurations for Water Distribution



App and Capability Configurations for Wastewater



App and Capability Configurations for Stormwater



Options to represent your assets

- **Simple representation**
 - **Hosted Stormwater Configuration**
- **Basic network representation**
 - **Geometric Network Editing and Analysis Configuration**
- **Advanced network representation**
 - **Water Distribution, Sewer & Stormwater Utility Network Configurations**

Hosted Configuration for Stormwater

Simple representation

- **Information model designed for ArcGIS online to enable simple asset mapping**
- **Includes**
 - Editors for mobile and desktop browsers
 - Viewers for mobile and desktop browsers
 - Field report for general notes
- **No network capabilities**
 - No network connectivity
 - No network tracking
- **Snapping is client dependent**
 - Suggest ArcGIS Pro
- **Provides an easy path forwarded to the utility network**

Demonstration

Hosted Configuration for Stormwater

Geometric Network Editing and Analysis Configuration

Basic Network Representation

- Provides geometric network data models for water, sewer and stormwater systems
- Configures ArcMap to perform common water utility editing tasks
- Includes the Attribute Assistant
- Available until at least 2024

Demonstration

Geometric Network Editing and Analysis
Utility Isolation Trace

What is the future of the Attribute Assistant?

- **The Attribute Assistant only works with ArcMap and is not utility network aware**
 - Will be available until at least 2024
- **Functionality being replaced by cross platform attribute rules**
 - ArcGIS Pro and other contemporary ArcGIS Clients
 - Rapidly maturing capabilities

Utility Network Industry Configurations

Advanced Network Representation

- **Makes a utility network behave like a water distribution, sewer or stormwater system**
- **Provided data models enable much truer network behavior than previously possible**
- **Configures ArcGIS Pro to perform common editing tasks**
- **Deploys services for other apps or systems to consume**

Demonstration

Utility Network Industry Configuration

CCTV Manager

New

- **Configuration of ArcGIS Pro**
- **Modernization of CCTV Processor**
- **Makes spatial data from CCTV observations**
 - Enables mapping, analysis and data sharing
- **Points for defects**
- **Lines mains surveyed**
- **Lines for continuous defects**

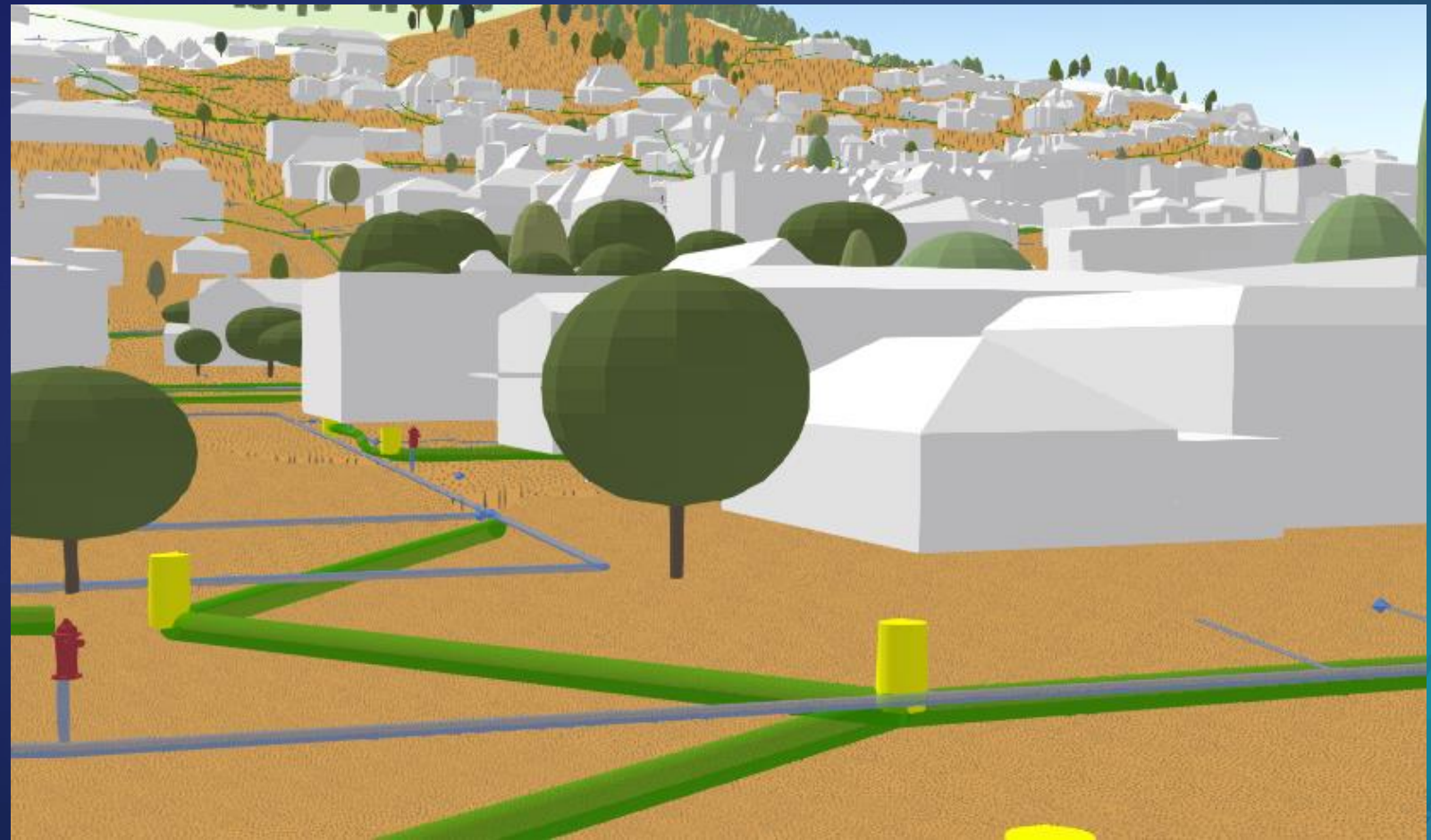
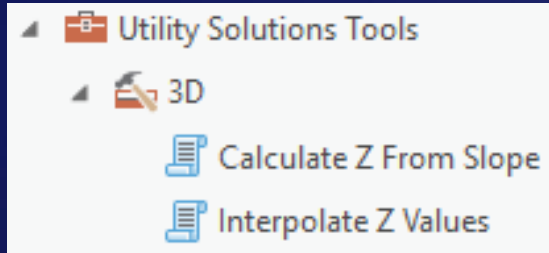
Demonstration

CCTV

ArcGIS Solutions for Water Utilities Roadmap

- **Leak Logger Modernization**
- **Isolation Trace for the Utility Network**
- **Improved sample data for the utilities network configurations**
- **Hosted configurations for Sewer and Water**
- **3D Tools for Sewer**

3D Tools for Sewer Preview



Finding ArcGIS Solutions

- **Visit the ArcGIS Solutions Site – solutions.arcgis.com**
- **Explore the ArcGIS Solutions for Water Utilities section**
 - Shows how ArcGIS Solutions for Water Utilities supports organizational needs
- **Visit the gallery and do key word searches**
 - You will may find configurations from other industries that fit your needs
- **Install the ArcGIS Solutions Deployment Tool**
 - To access a ArcGIS Solutions from within ArcGIS Pro

Summary

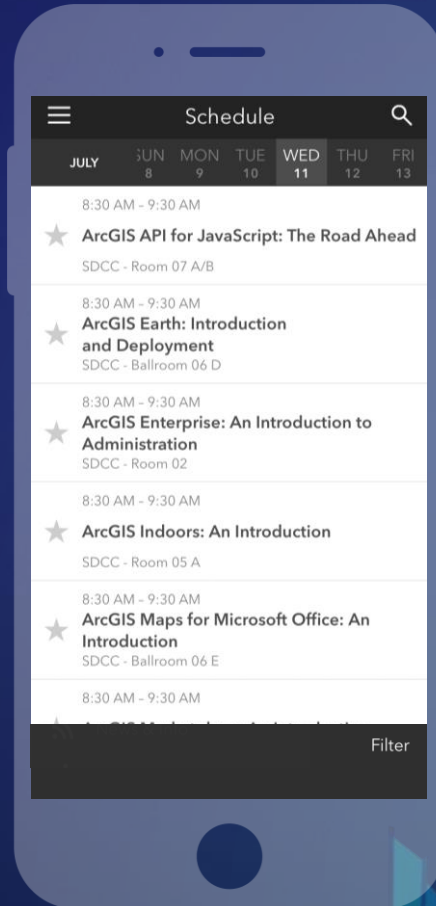
- **ArcGIS Solutions for Water Utilities**
 - Free
 - Supported
 - Rapidly solve water, sewer and stormwater challenges
- **Many options to support your specific needs**
- **Visit solutions.arcgis.com to find Solutions that will help you**

Please Take Our Survey on the App

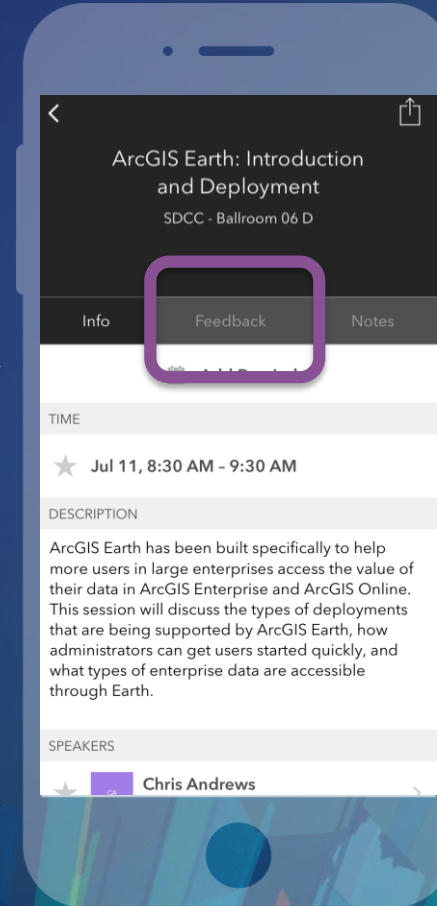
Download the Esri Events app and find your event



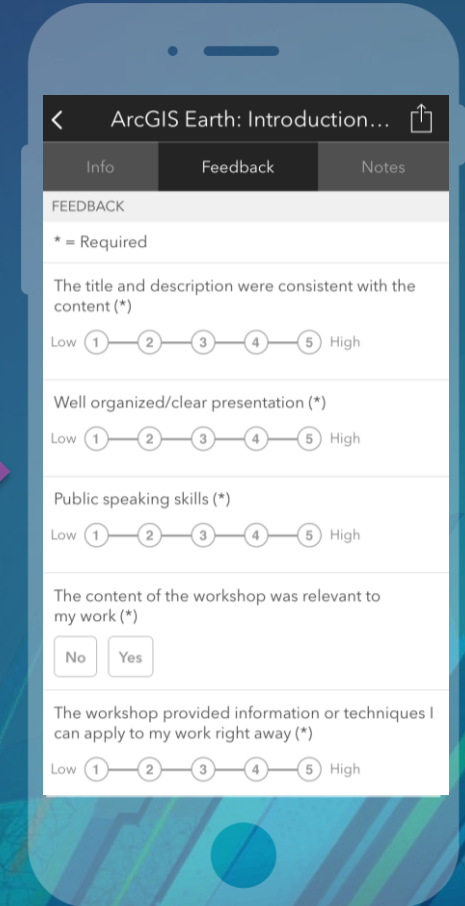
Select the session you attended



Scroll down to find the feedback section



Complete answers and select "Submit"



Questions





esri

**THE
SCIENCE
OF
WHERE**