



Configuring ArcGIS for Tactical Operations Centers

Derek Foll

Lyle Wright

An abstract 3D architectural graphic on the right side of the slide. It features various geometric shapes and planes in shades of blue, orange, and green. Some surfaces are covered with white topographic contour lines. The overall composition is dynamic and layered, suggesting a complex digital environment or data visualization.

**GIS
INSPIRING
WHAT'S
NEXT**

Defense Solutions – Current Capabilities

Whole Organization



Intelligence Analysis



Civil-Military Operations



Mission Planning



Military Symbology



Defense Solutions – Current Customers

1st Topographic Platoon, USMC
SOF Geospatial Enterprise
G2, 4th Infantry Division
Sacramento Sheriff
1 MEF G2, ICOP
US Coast Guard
Israeli Navy
FBI CIRG
NATO



Customs and Border Patrol – Office of Geospatial



DCGS-A 3.2.5 and 3.2.6 Baseline

FORSCOM GEOINT Workstation Baseline



NGA IGAPP Vendor Portal



AF FPED Baseline



4th Infantry Division – Civil Affairs



85th Civil Affairs
Yuma Proving Ground
Bundeswehr Geoinformation Center
Tactical Service Oriented Architecture, USMC
Boston Regional Intelligence Center (BRIC)
Military Counterintelligence Service, Germany
512th Engineer Detachment, US Army South
Command for Strategic Recon and Joint Imagery Analysis Center, Germany

What is an Operations Center?



“A facility containing the majority of the staff designed to control current operations, conduct detailed analysis, and plan future operations.”

ATP 6-0.5 Command Post Organization and Operations

What is Field Collection?



“Firsthand observation, interviews, surveys, and other tools used to make more knowledgeable decisions are characteristics of the deliberate assessment.”

*FM 3-05.401 Civil Affairs Tactics, Techniques, and Procedures
(September 2013)*

Receive civil information

Make recommendations

Influence the civil component

Analyze/develop/manage civil information



Coordinate resources

Synchronize capabilities

Conduct transitional operations

Integrate resources/capabilities.

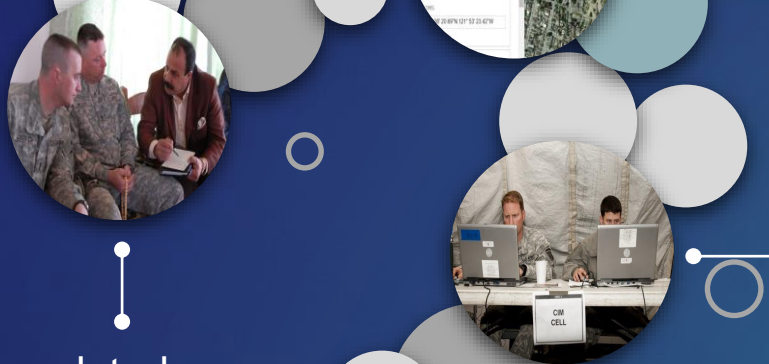
Disseminate civil information

Civil-Military Operations Challenges

Can we increase speed and accuracy at collection?

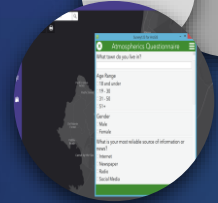


Can civil-military information be collected as quantitative data?



Can civil-military information aid in the intelligence preparation of the battlefield?

Can we maintain updated information from ongoing civil-military operations?



Can we get metrics on civil-military operations?

Can we do all this with what we have today?



What problem were we trying to solve?



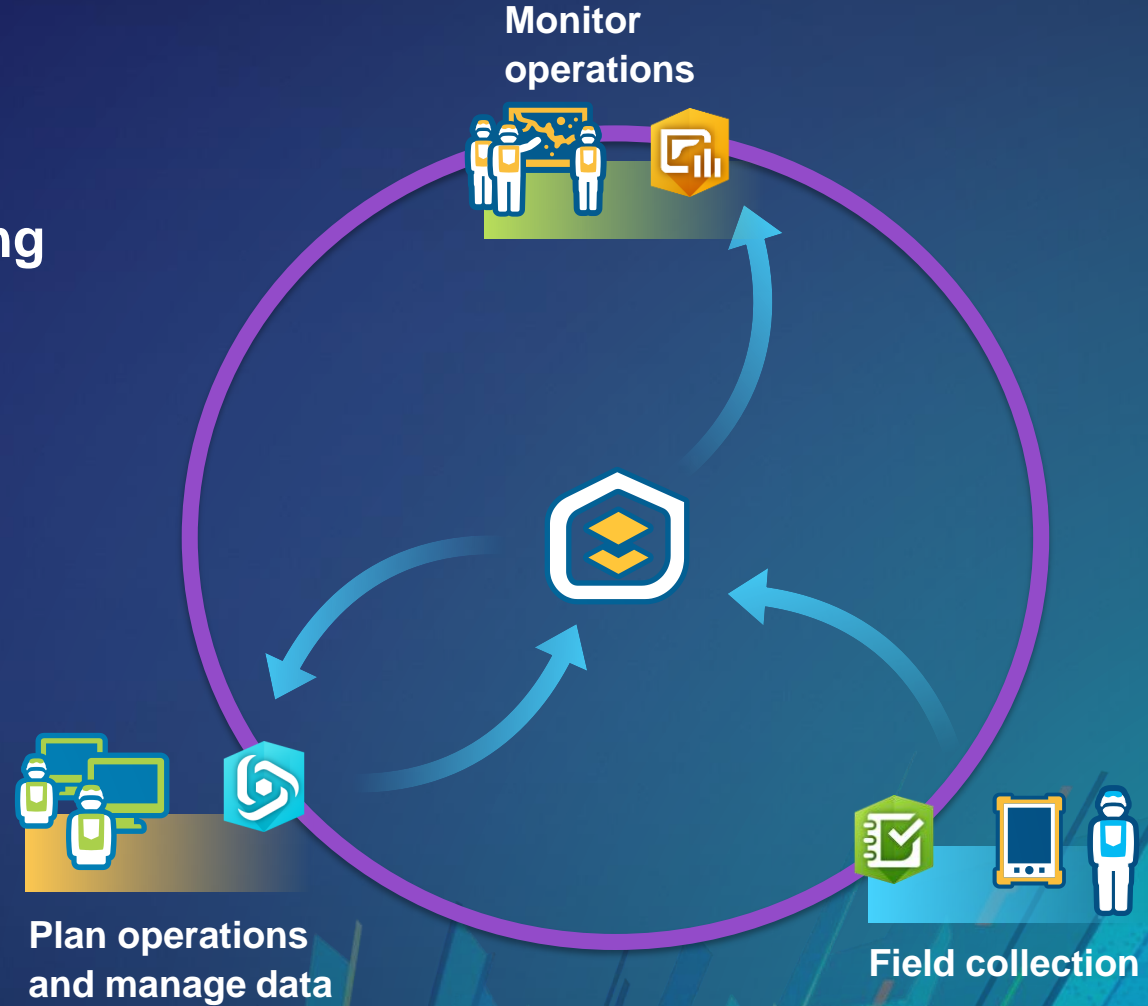
Paper-
centric

No integrated
processes

No data
visualization

Ci

- Planning operations and managing information
- Field collection
- Monitor operations



Configurations of ArcGIS for Civil-Military Operations

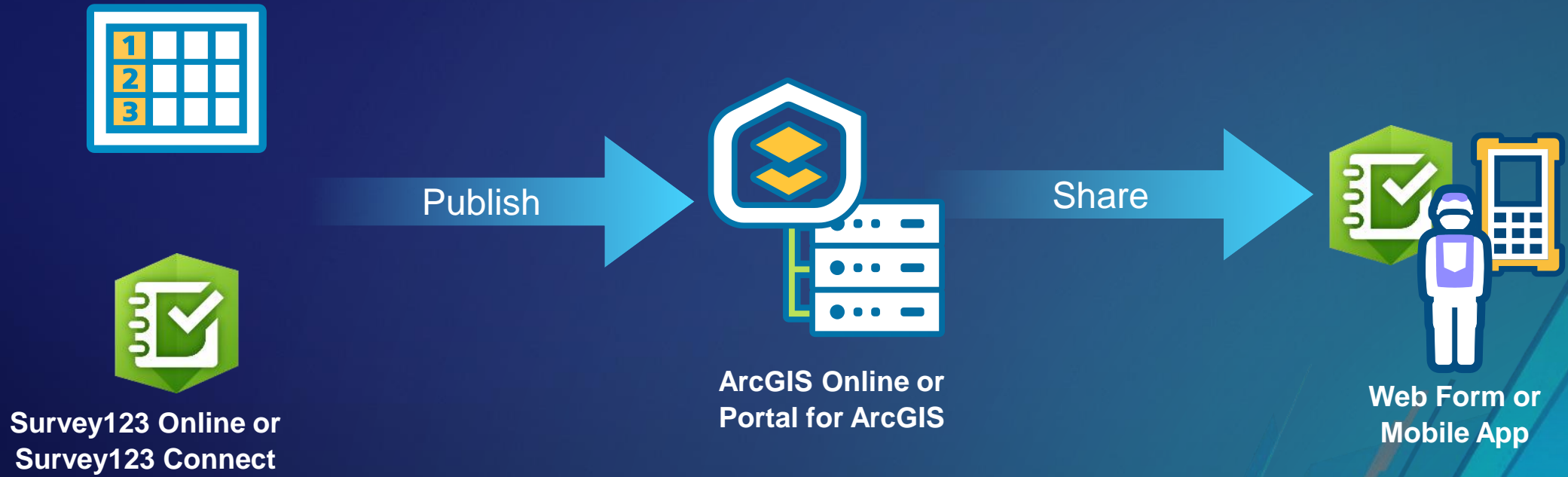


The background is a solid teal color with abstract geometric shapes and lines in various shades of blue, green, and orange. The shapes are layered and create a sense of depth and movement. The text is white and positioned in the upper left quadrant.

Preparing for Operations

Plan safe and effective missions

Basic Survey Form Development Pattern





Field Collections

Easily collect consistent data in the field

Civil-Military Operations Forms

- Designed to replace paper and automate key workflows
- Field collection of survey and interview data
 - On mobile device, laptop, browser
- Web- or Excel-based smart forms
- Shared as form and feature service
- Include:
 - Atmospherics Questionnaire (Brief Interviews)
 - Population Assessment Questionnaire Report (POPREP) (In-Depth Interviews)
 - Requests for Information (RFI)

Request for Information (RFI)

Request

Request Information

Classification
Security Classification of Information

Submission Date and Time
Current Date and Time

7/5/2017 09:48

Location *
Center of AO for the question; elaborate in the Description

34°3'N 117°12'W ± 81 m

W Park Ave W Stuart Ave
East Redlands
Redlands Mall

Requestor Information

Unit
Unit submitting the request

Section
Section submitting the request

Submitted by

Managing Data

Manage data collected in the field

Basic Workflow



Operations Management

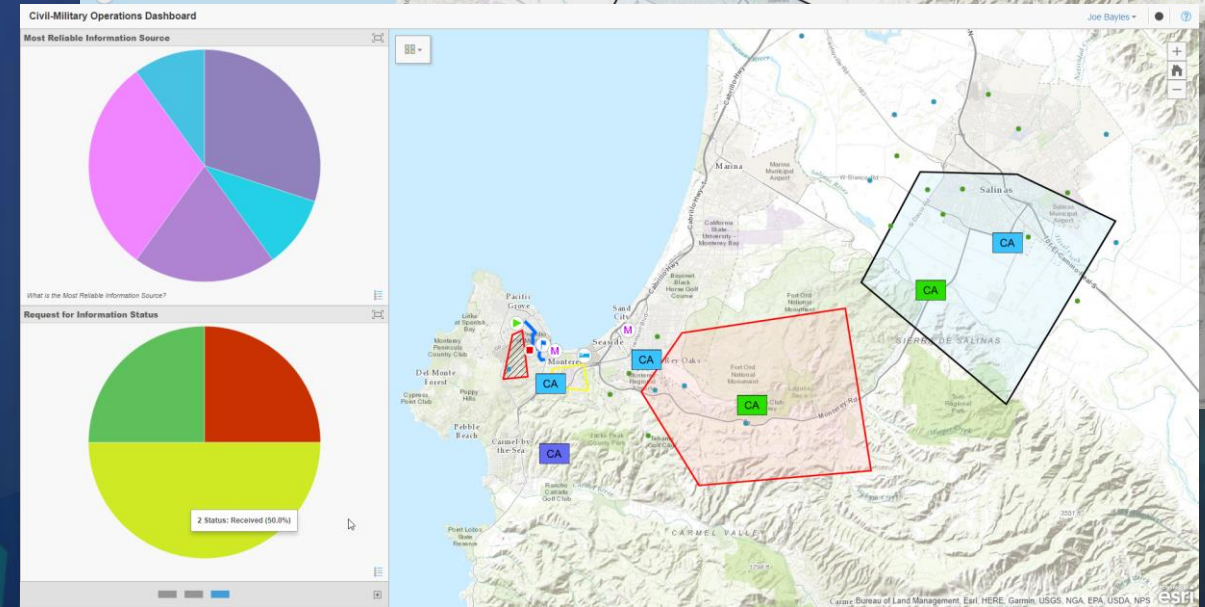
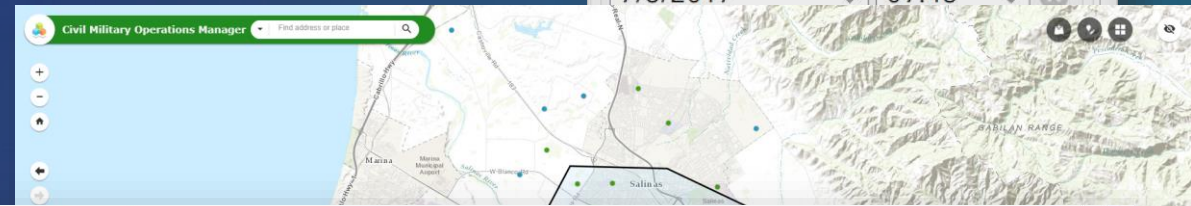
Supporting Operations through Ops Dashboard

Solutions

solutions.arcgis.com/defense/help/civil-military-operations

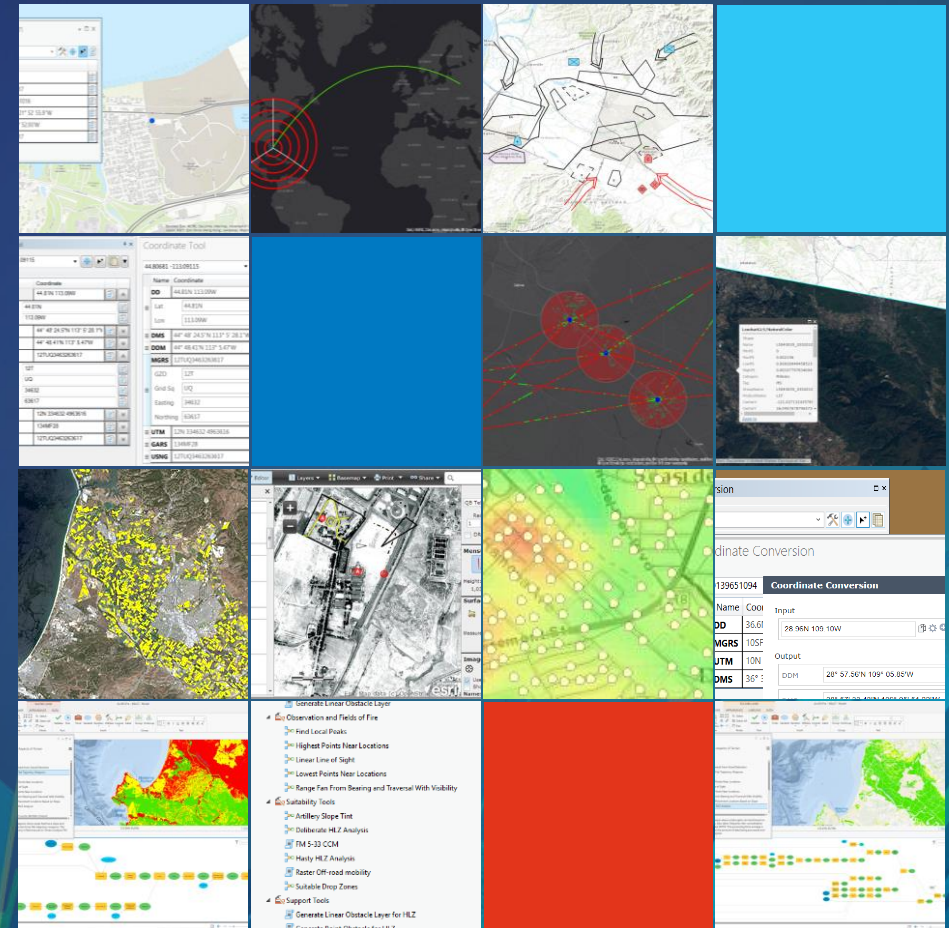
- Forms
 - Atmospherics Questionnaire
 - Population Assessment Questionnaire Report (POPREP)
 - Requests for Information (RFI)
- Web Apps
 - Priority Areas of Interest and Operations
 - Civil Mission Execution Planner
 - Civil-Military Operations Manager
- Civil-Military Operations Dashboard

The screenshot shows a web form titled "Request for Information (RFI)". It includes a search bar at the top with a magnifying glass icon and a close button. Below the title, there are sections for "Request" and "Request Information". The "Request Information" section contains a "Classification" dropdown menu with the text "Security Classification of Information" and a "Submission Date and Time" section with two dropdown menus for date and time, currently showing "7/5/2017" and "09:48".



ArcGIS Solutions for Defense

- Solutions accelerate the adoption of ArcGIS with ready-to-use maps, apps, and tools tailored to specific industry needs.
 - Documented
 - Supported and maintained
 - Open source





esri

**THE
SCIENCE
OF
WHERE**