

Configuring Crowdsourcing Solutions

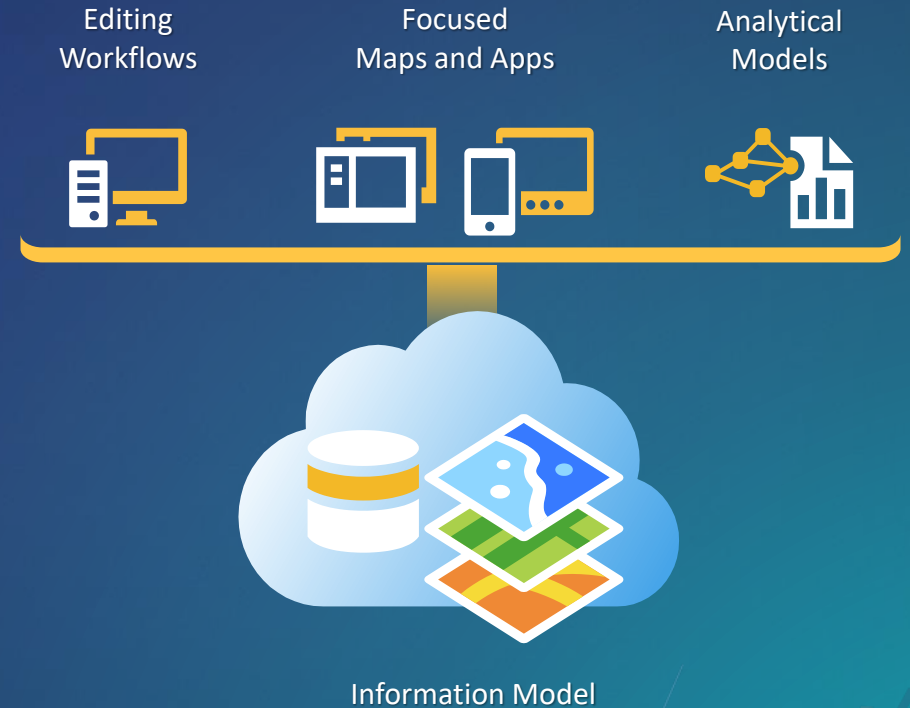
Allison Muise



GIS
INSPIRING
WHAT'S
NEXT

ArcGIS Solutions

- Collection of useful maps and apps
 - Configurable and extensible
 - Freely available and fully supported
- Community of users (2000+ Meetup members)
 - Best Practices / Implementation Support
- Network of Esri Services and Partner offerings
 - Help users implement, sustain and enhance



.....Available on-premise or in the cloud

Mission

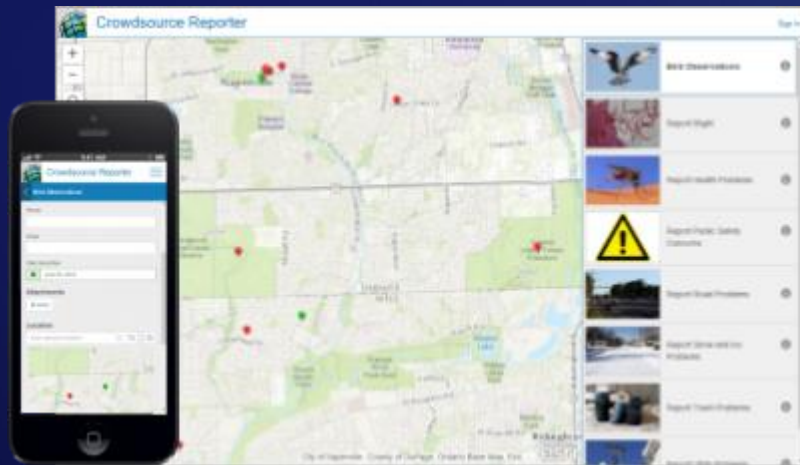
- Deliver maps and applications quickly throughout their organization
 - Roadmap for standard capabilities, improve service delivery, expand reach, innovation....
- Stay current with future releases / avoid legacy technology
 - Save time and money, leverage new ArcGIS offerings, focus on complex or unique problems....
- Unlock geospatial platform so it can be leveraged by many
 - Mitigate many organizational challenges, maximize technical expertise....
- Leverage the collective knowledge of the entire community
 - Best practices, industry tradecraft....

Crowdsourcing Solutions

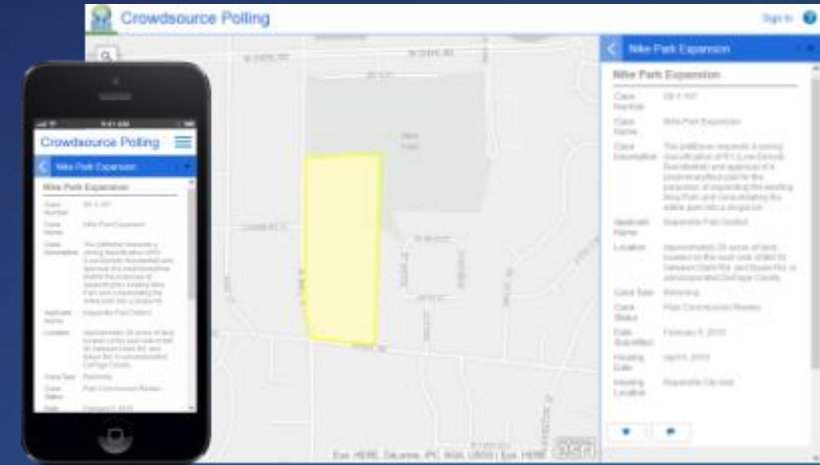
- AED Reporter
- Warming and Cooling Center Reporter
- Citizen Problem Reporter
- Drug Activity Reporter
- Homeless Activity Reporter
- Mosquito Service Request
- Mosquito Population Surveillance
- Participatory Budgeting
- Mitigation Feedback
- Property Lister
- Drug Drop Off Calculator
- Even Permit Review
- Public Comment
- ROW Permit Review & Public Comment
- Environmental Impact Public Comment
- Citizen Science Reporter

Crowdsourcing Solutions

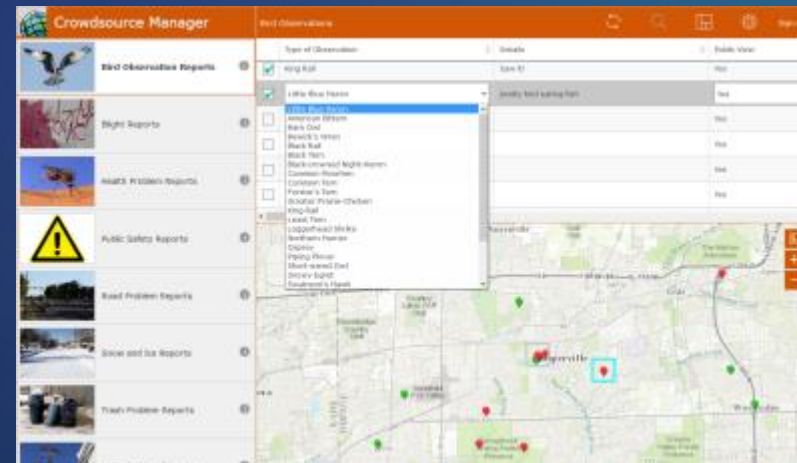
Web App Templates in ArcGIS Online & ArcGIS Enterprise



Crowdsourcing Reporter



Crowdsourcing Polling



Crowdsourcing Manager

ArcGIS Solutions

ArcGIS Solutions GALLERY COMMUNITY

SEARCH esri

ArcGIS Industry Specific Maps and Apps

ArcGIS Solutions deliver Ready-to-Use Maps and Apps to jumpstart your work

FIND YOURS ↓

Leverage hundreds of ready-to-use maps, apps, and platform configurations to meet your needs, delivering innovation and best practices for your organization.

- Local Government
- State Government
- Emergency Management
- Water
- Electric
- Gas
- Defense
- Telecommunications
- Parks & Gardens

Show Me!

Road Ahead

- Accessibility!
- Tighter integration with ArcGIS Hub
- Documentation

The Community

It's not just about the technology

ArcGIS Solutions - GALLERY - COMMUNITY

ArcGIS Industry Specific Maps and Apps

ArcGIS Solutions deliver Ready-to-Use Maps and Apps to jumpstart your work.

FIND YOURS ↓

Leverage hundreds of ready-to-use maps, apps, and platform delivering innovation and best practices for

- Local Government
- State Government
- Emergency Management
- Water
- Electric

Esri is on GitHub!

We're excited about helping developers build and share software. Browse our open source code and get started with our powerful ArcGIS platform.

BROWSE ON GITHUB

Need an ArcGIS subscription? Start developing today for free.

Filter by language or keyword: Local-Government

- executive-dashboard JavaScript
- local-government-online-apps JavaScript
- tax-parcel-viewer JavaScript
- local-government-desktop-addins C-Sharp

ArcGIS for State Government @ArcGISStateGov

Redlands, CA · 151 members · Public group

Organized by Heather Eisan and 1 other

Share: Facebook, Twitter, LinkedIn

About Meetups Members Photos Discussions More

You're a member

What we're about

Meet-up with the passionate people using and creating ArcGIS for State Government. Collaborate, and share with peers on the challenges and the solutions government organizations have.

Past Meetups (4)

8 OCT Thu, Oct 8, 2015, 11:00 AM
Configuring Citizen Science Reporter and Manager...

UC Events

- ArcGIS Solutions for State Government Sessions
 - Several tech workshops / demo theatre sessions
- Solution Island
 - Focused conversations / support

A promotional banner for the Esri User Conference. The background is a dark blue gradient with a subtle pattern of small, light blue dots. The text is white and centered. The main title 'Esri User Conference' is in a large, sans-serif font. Below it, the subtitle 'GIS - Inspiring What's Next' is in a smaller, sans-serif font. A thin blue horizontal line is positioned below the subtitle. At the bottom, the dates and location are listed in a small, white, sans-serif font.

Esri User Conference

GIS - Inspiring What's Next

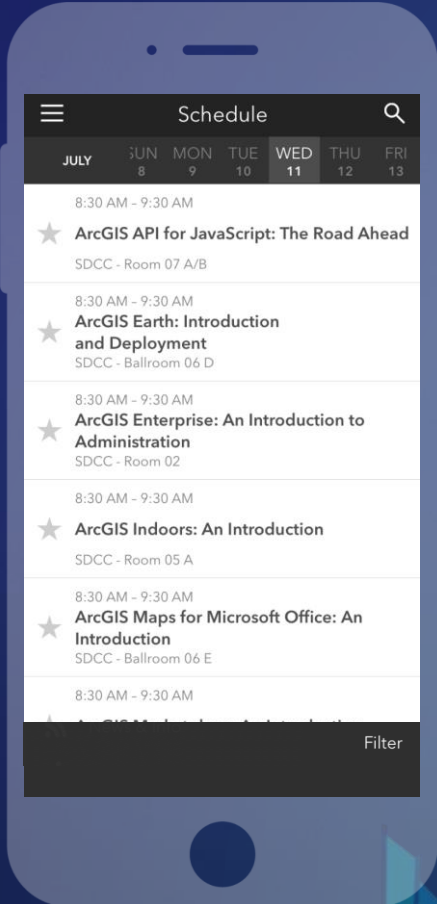
July 9 - 13, 2018 | San Diego Convention Center, San Diego, California

Please Take Our Survey on the App

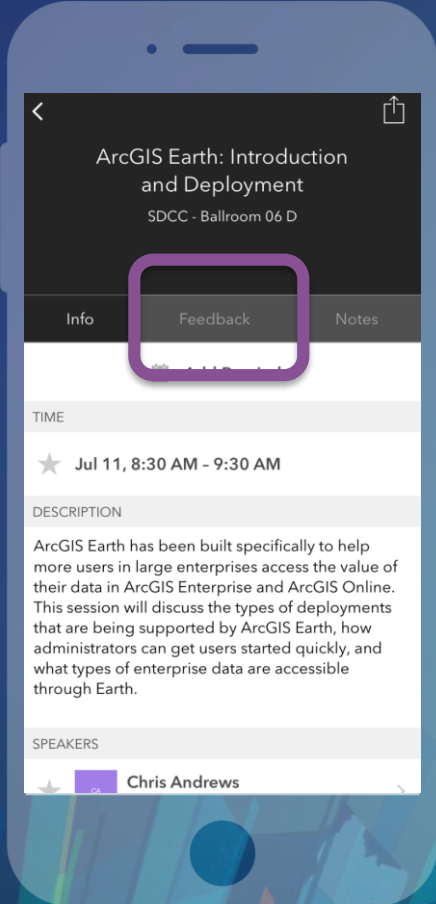
Download the Esri Events app and find your event



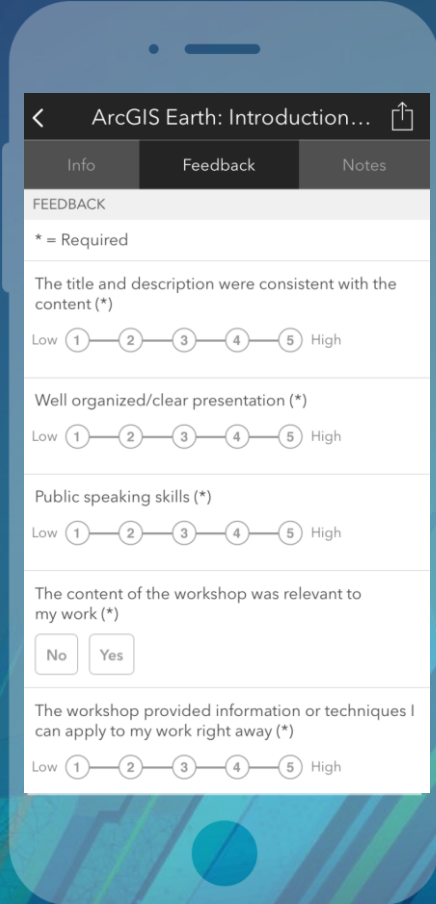
Select the session you attended



Scroll down to find the feedback section



Complete answers and select "Submit"



Thank you

Be innovative, aware, and know you are not alone

 <http://solutions.arcgis.com>

 <https://www.meetup.com/ArcGIS-for-State-Government/>

 <http://esri.github.com>



esri

**THE
SCIENCE
OF
WHERE**



Presentation Title

Presenter Names

**GIS
INSPIRING
WHAT'S
NEXT**





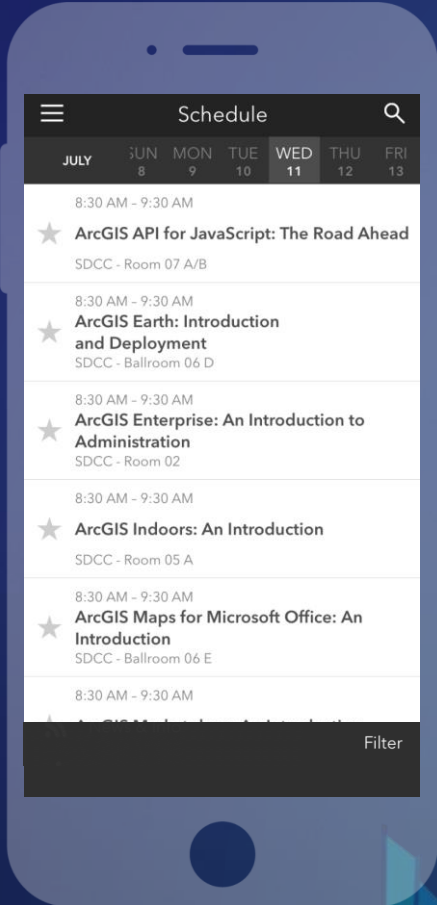


Please Take Our Survey on the App

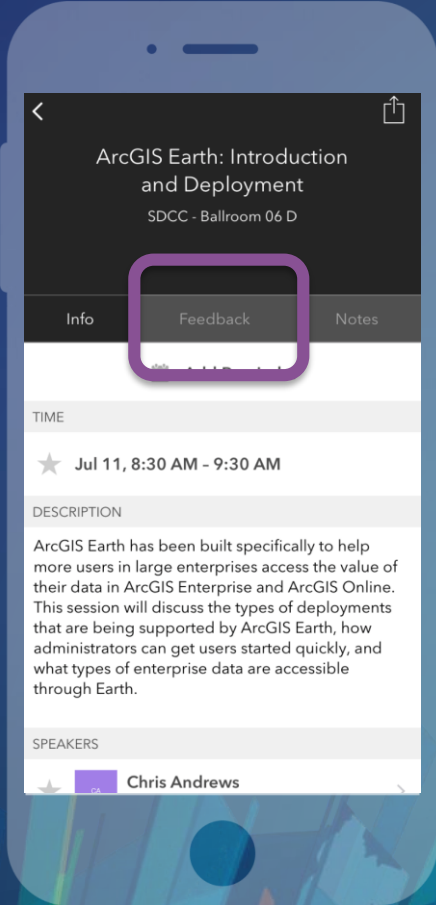
Download the Esri Events app and find your event



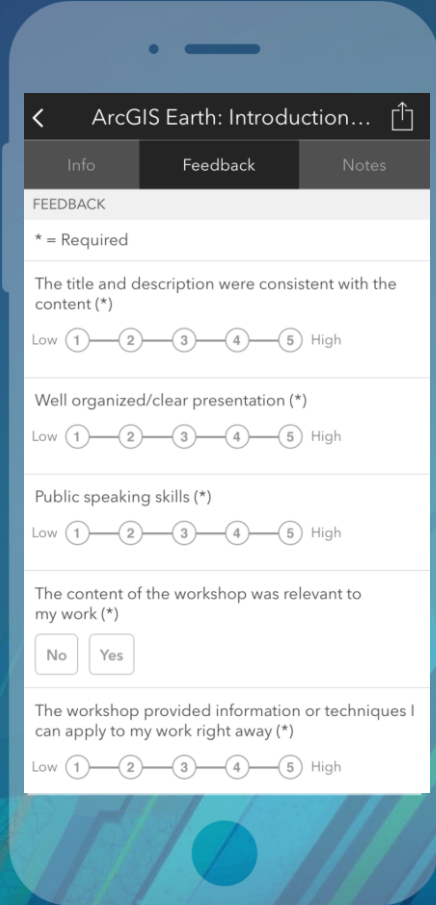
Select the session you attended



Scroll down to find the feedback section



Complete answers and select "Submit"



See Us Here

WORKSHOP	LOCATION	TIME FRAME
<ul style="list-style-type: none"><li data-bbox="191 392 305 428">• Title	<ul style="list-style-type: none"><li data-bbox="930 392 1082 428">• Where	<ul style="list-style-type: none"><li data-bbox="1668 392 1936 428">• 12:00 – 1:00



esri

**THE
SCIENCE
OF
WHERE**