

Mapping Knowledge Tift County School District

Tift County, Georgia

Michael Rivera – GIS Regional Project Manager

**South Georgia Regional Development Center
Valdosta, Georgia**

Tift County

- Population 40,000
- Students 3,700
- 12 Campuses
 - Pre-K (1)
 - Elementary Split (8)
 - Middle (1)
 - 9th Grade Academy (1)
 - High (1)



Background Information

- Year prior to this project we did analysis of school locations and student addresses for redistricting purposes with the Assistant Superintendent of Operations.
- He came back a year later and said if we can help him with redistricting then we can help map sewer cleanouts.

Map Book Plan

- GPS Utility Features
 - Sub Meter accuracy with Trimble Pro XR Unit
- Scan School Blueprints – Saved as .TIF
 - Inexpensive at local copy/blueprint store
- Use City of Tifton's Aerial Photography
 - 1" = 600'



**Kids on
Basketball
Courts**

This is an aerial photograph of an elementary school and its surrounding area. The school building is a large, white, L-shaped structure with a flat roof, located in the center-right of the image. To the left of the school, there is a paved basketball court with several children playing on it. A light blue text box with the text "Kids on Basketball Courts" and a black arrow pointing to the court is overlaid on the image. To the right of the school, there is a large parking lot filled with many cars. The area is surrounded by grassy fields and some trees. In the background, there are residential houses and streets. The streets are labeled "17TH ST WEST" at the top, "17TH 1/2 ST" on the left, and "19TH ST WEST" at the bottom. A street labeled "DORMIER ST" runs vertically through the middle of the image, passing between the school and the basketball court.

Elementary School

Step One

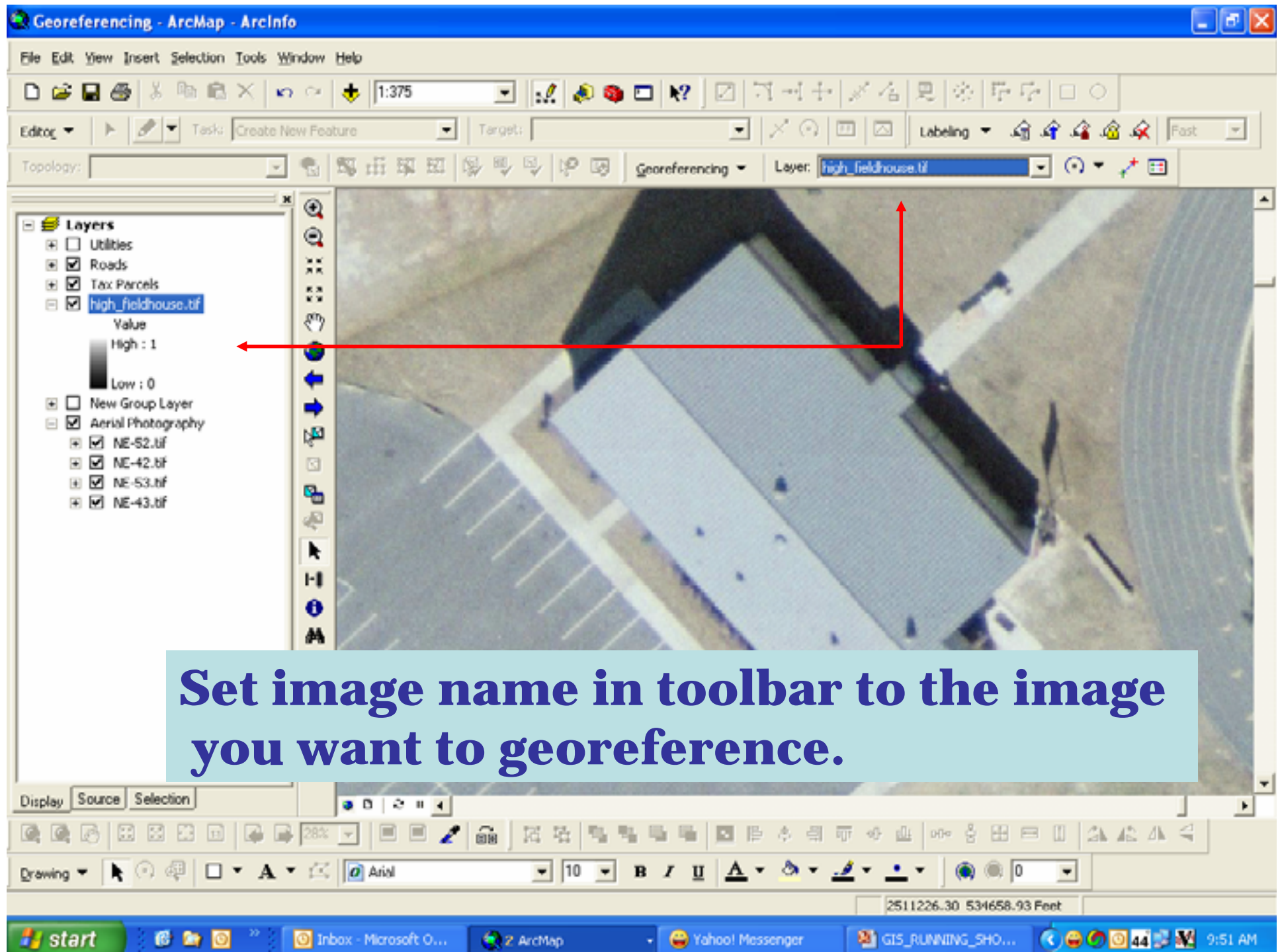
- GPS 1-2 days per school. Accompanied by school maintenance worker entire time. The points included Electric, Gas, Sewer, Water Items (39 different feature types). Process points and export into a shapefile.
- Get blueprints scanned.

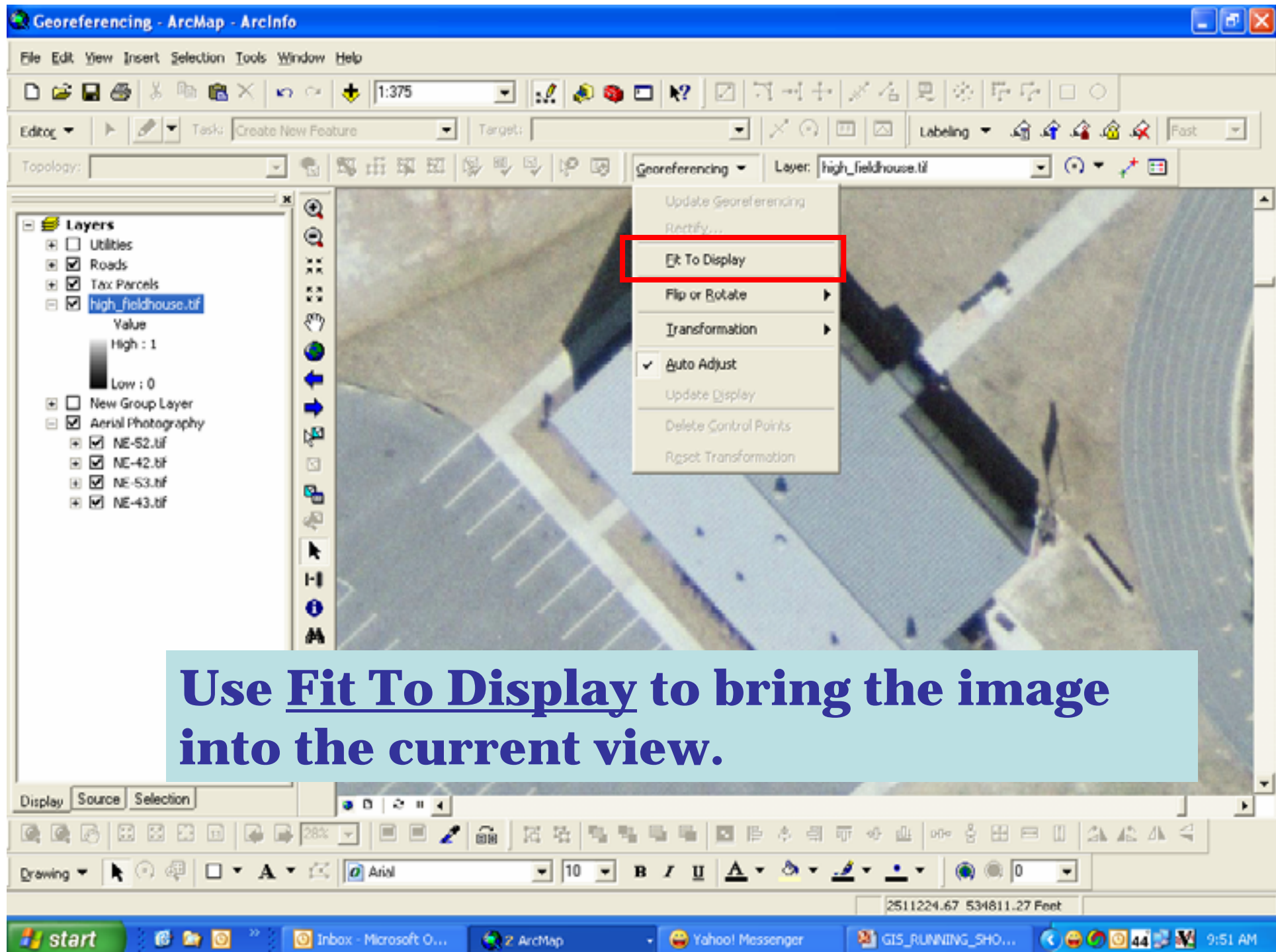
Step Two

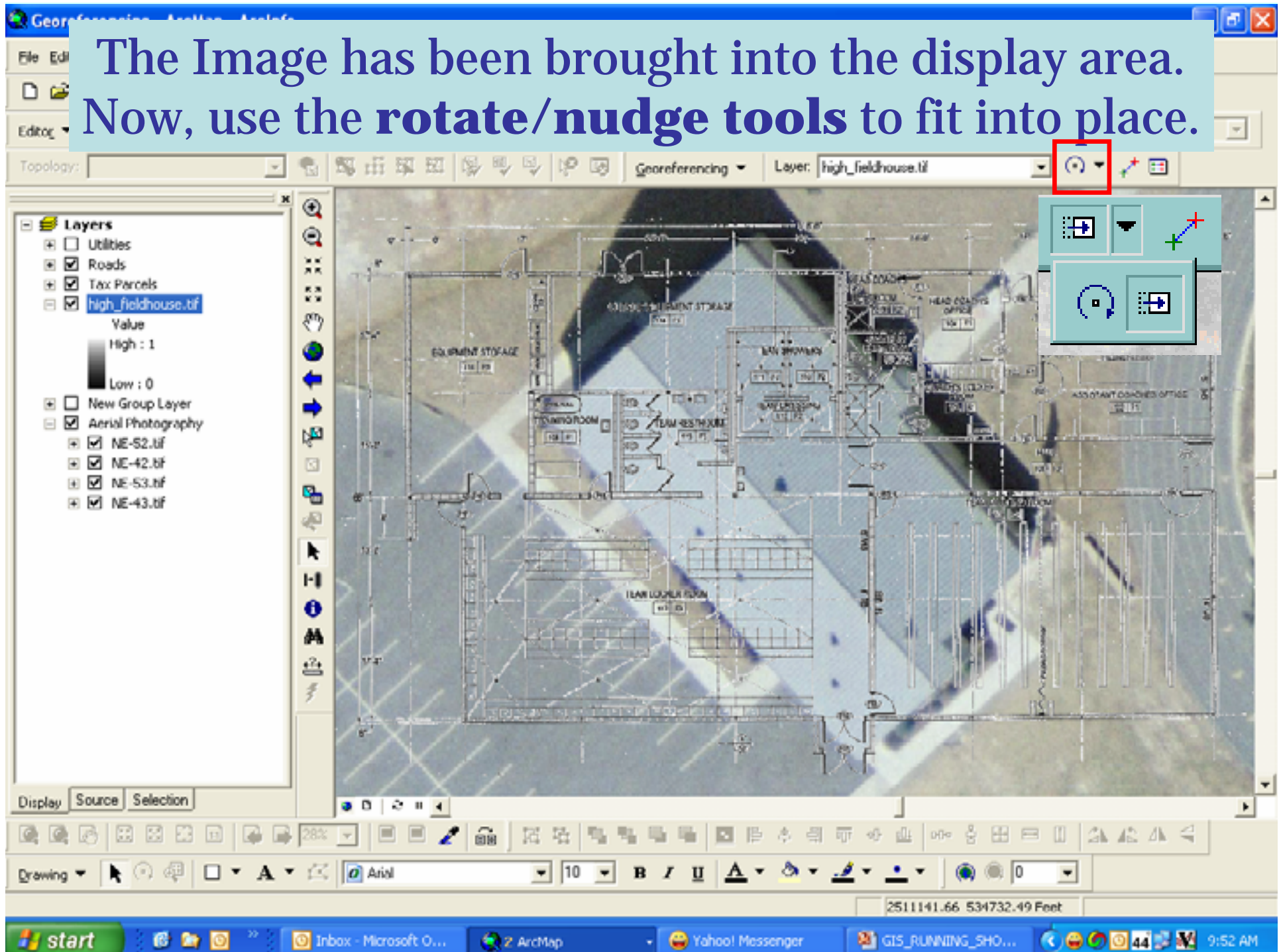
- Digitize any water, sewer and gas lines found on blueprints.
- Georeference scanned blueprints.

Georeferencing Process

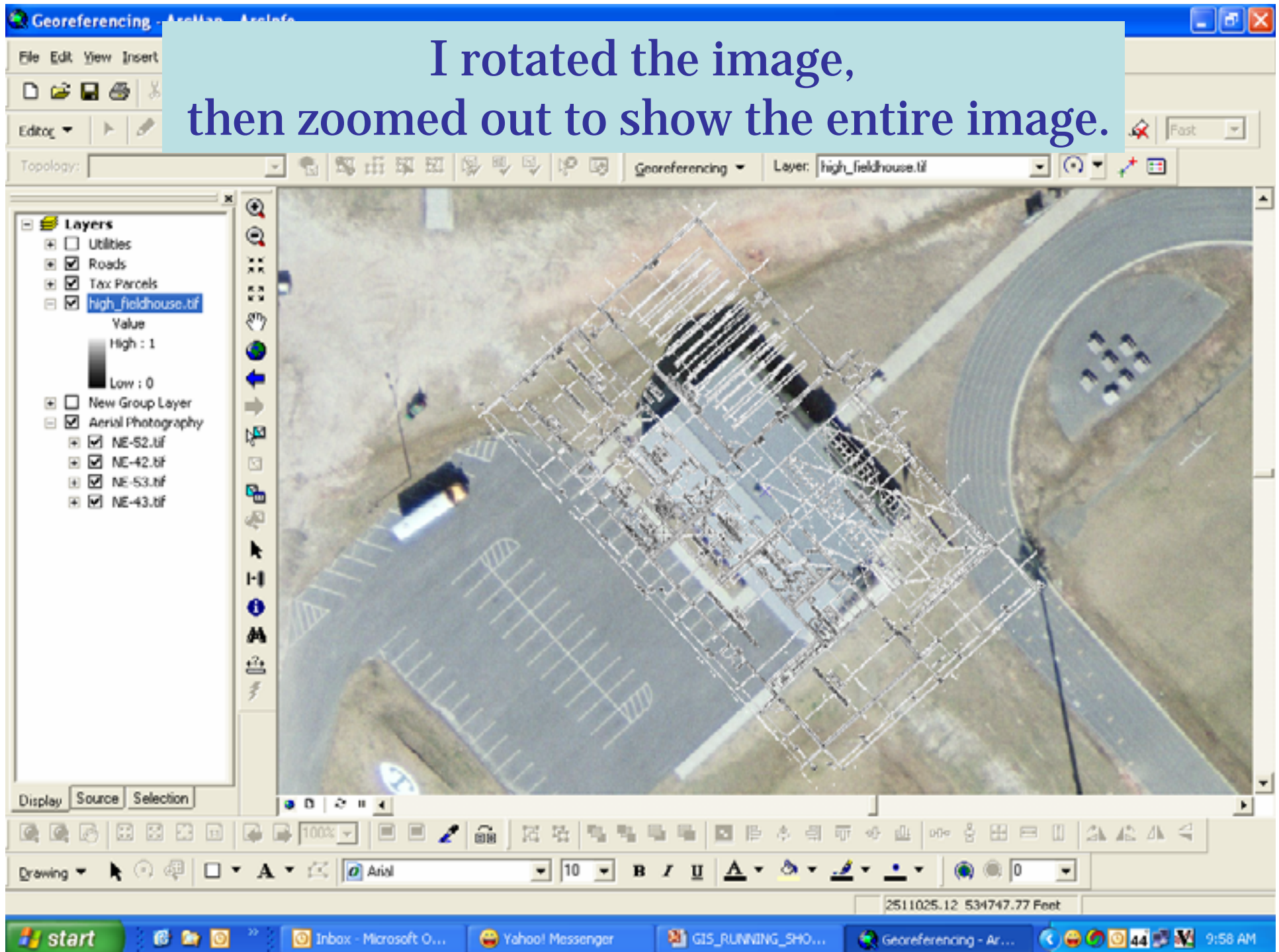
1. Blueprints are saved in TIF file. Load TIF into ArcMap.
2. Add the Georeferencing toolbar.
3. Fit TIF to display. Rotate/Nudge to position.
4. Zoom In & Add Control Points.
5. Rectify/Save (This creates a .tfw or “World File”).





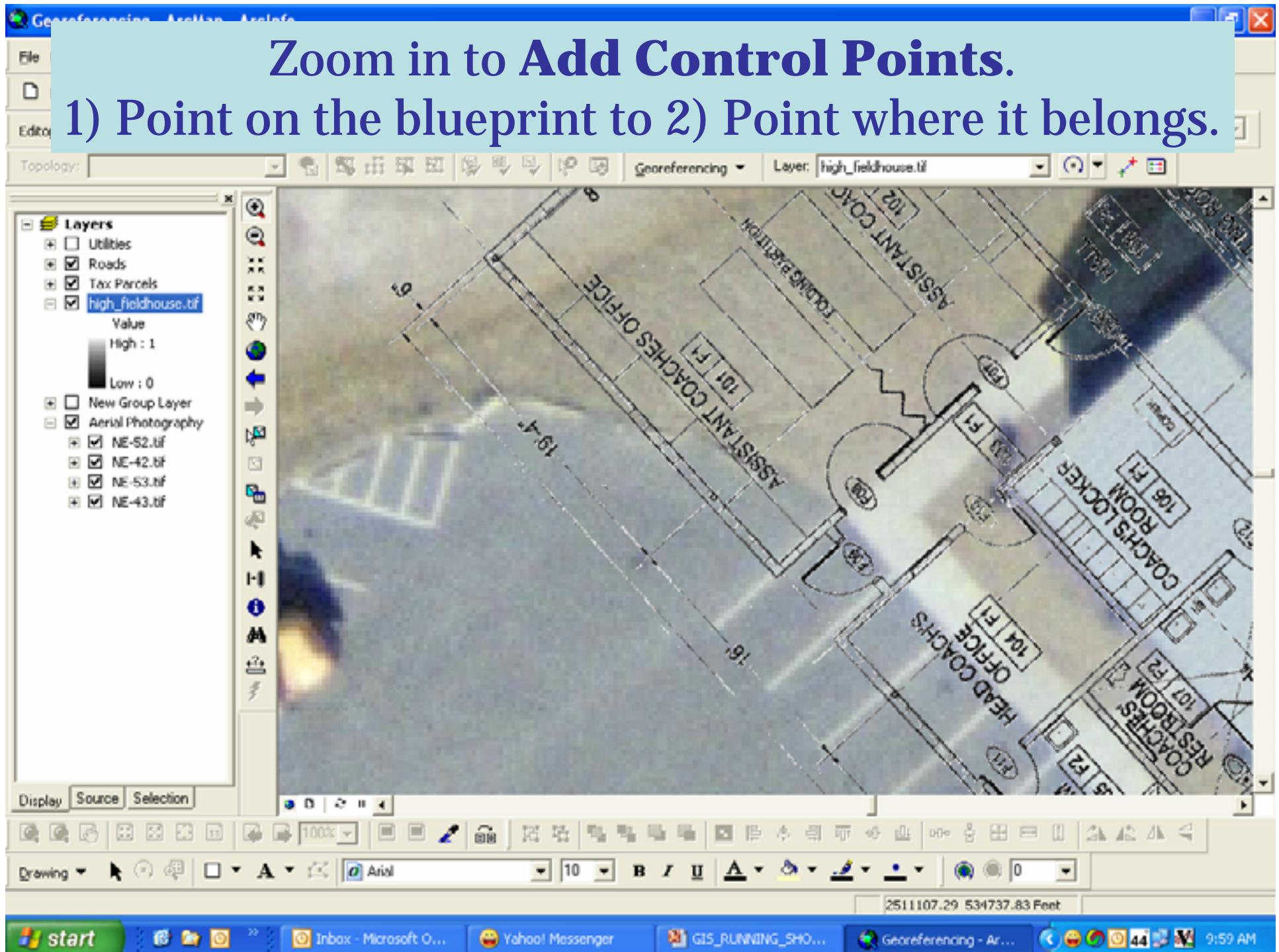


I rotated the image,
then zoomed out to show the entire image.

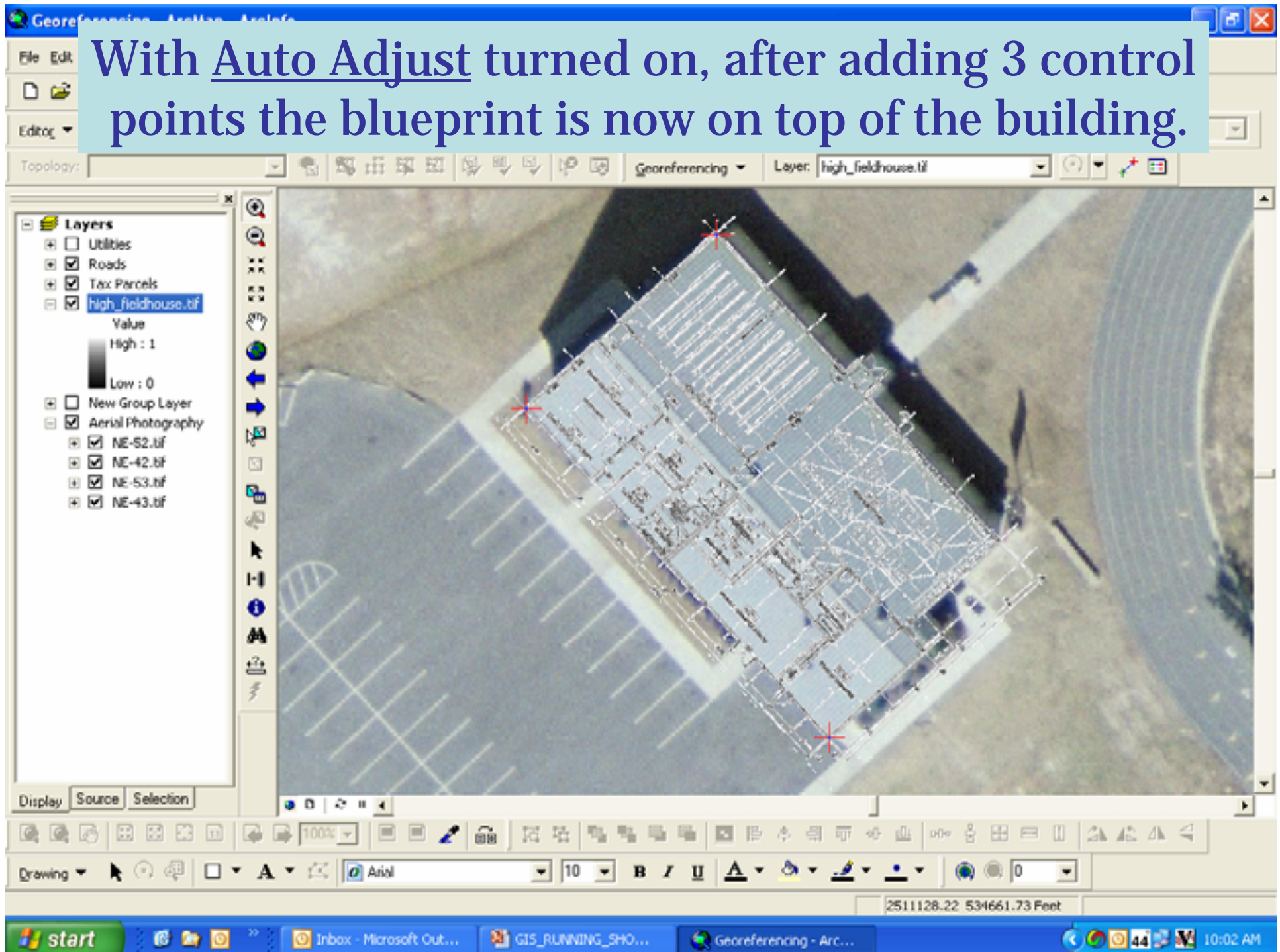


Zoom in to Add Control Points.

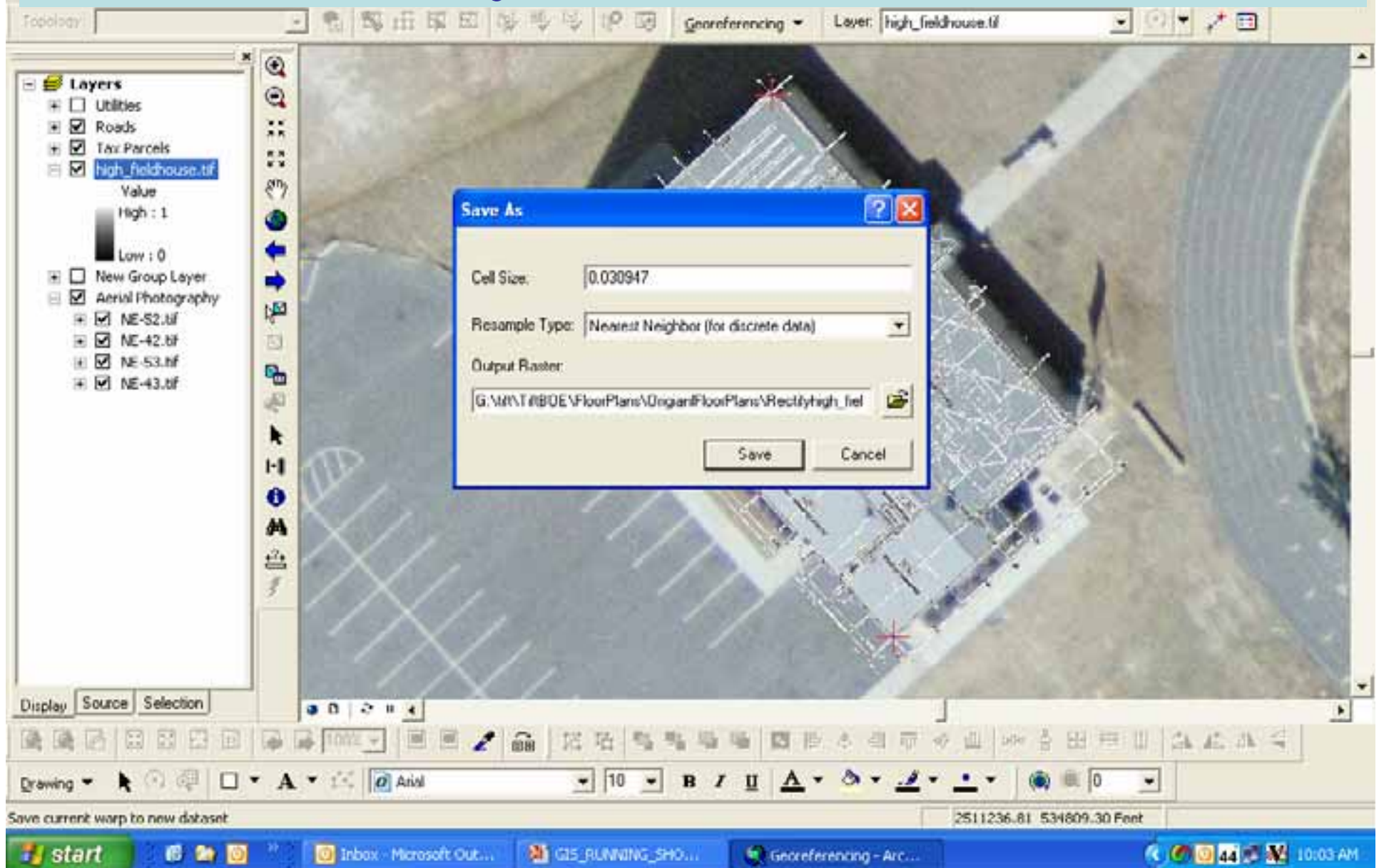
1) Point on the blueprint to 2) Point where it belongs.



With Auto Adjust turned on, after adding 3 control points the blueprint is now on top of the building.



The last step is click **Georeferencing** from the toolbar, then **Rectify** which saves the World File.





Northside Primary School
1815 Chestnut Ave
Tifton, GA 31794
(229) 386-6535



1 inch equals 20 feet

South Georgia RDC
P.O. Box 1223
Valdosta, GA 31602
(229) 333-5277



Northside Primary School

Revision to Map Book

- Heads up digitized fiber lines.
- Add propane tank points.

GEMA (Georgia Emergency Management Agency) saw map book and inquired about points for emergency responders.

Add Alarm Panels, Fire Extinguishers, Fire Sprinkler Controls, Master Key Location, Master Phone, Roof Access Points, Video Camera Monitoring Areas



Location

Page

Annie Belle Clark Primary School	2
Charles Spencer Elementary School	10
Eighth St. Middle School	18
G.O. Bailey Primary School	32
J.T. Reddick Elementary School	37
Len Lastinger Primary School	43
Matt Wilson Elementary School	49
Northeast Campus	57
Northside Primary School	64
Omega School	70
Tift County High School	77
Tift County Pre-K Center	91
Central Office of BOE	94

Legend

+	Acid Tank Cleanout	⊖	Irrigation Timer
●	Acid Waste Tank	⊗	Irrigation Valve
■	Backflow Preventor	★	Ph. Sys. Main Entrance
✕	Cable TV	Ⓣ	Phone
●	Chemical Trap	Ⓢ	Propane Gas Tank
□	Comm Pull Box	✕	Sat. Cab. Entrance
Ⓢ	E. Main Service Switch	Ⓢ	Satellite Equipment
Ⓢ	Electric Junction Box	Ⓢ	Septic Tank
Ⓢ	Electric Pull Box	■	Sewer Catch Basin
●	Electric Serv. Meter	■	Sewer Cleanout
Ⓢ	Electric Transformer	Ⓢ	Sewer Manhole
●	FD Connection	●	Sewer Storm Drain
Ⓢ	Fiber Ent/Exit Point	Ⓢ	Spigot
●	Fiber Sleeve	■	Storm Drain Cleanout
●	Fire Hydrant	Ⓢ	Telephone Pull Box
▲	Gas Main	Ⓢ	Telephone Pole
▲	Gas Valve	Ⓢ	Water Meter
+	Generator	Ⓢ	Water Valve
Ⓢ	Grease Trap	Ⓢ	Water Well
●	Grease Trap Cleanout	—	Water Lines
		—	Sewer Lines
		—	Gas Lines
		—	Fiber Lines

Note: Line Size &
Material type are noted
on maps if known.