

# ESRI's Fish Tool

2007 SERUG Conference

May 2-7, 2007

Stacy Belledin, Jacksonville (FL) Sheriff's Office

Jonathan Fisk, ESRI Charlotte

# ESRI's Fish Tool

- Fish Tool-What does it do?
- How the Fish Tool aids in analysis
- Where can I get it?

# Jacksonville Sheriff's Office

- Jacksonville: over 800,000 residents, over 800 square miles
- City-county Consolidated Government, JSO as Police Department and Corrections
- 1.3 million Calls for Service
- 110,000 Incident Reports
- 70,000+ Arrests

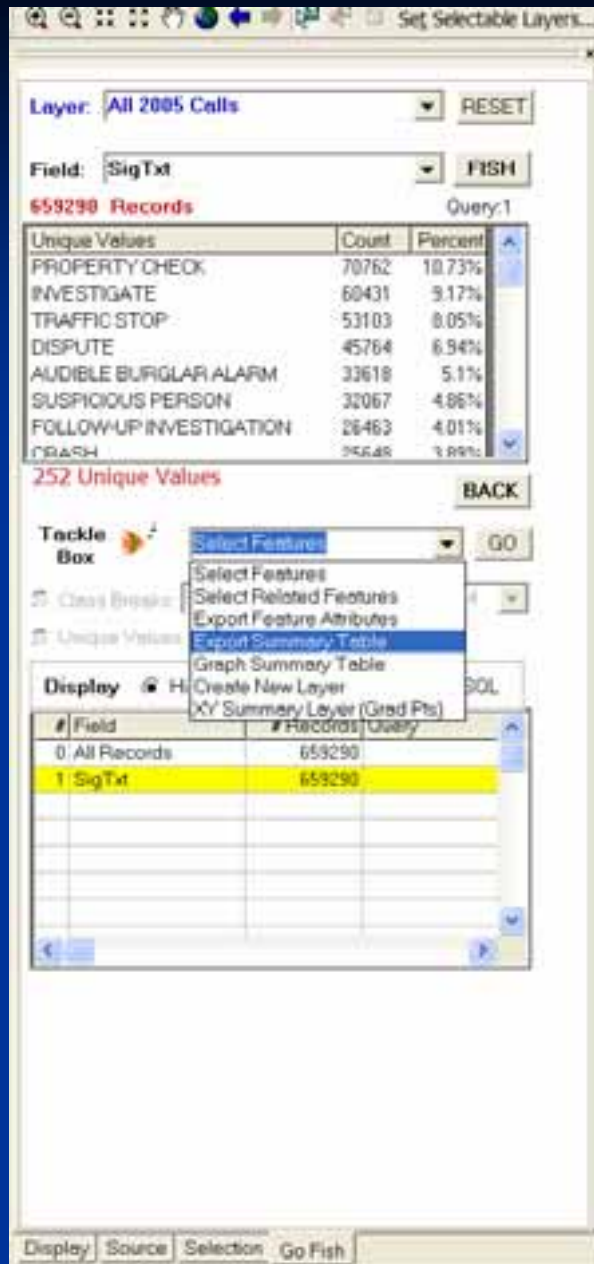
# Jacksonville Sheriff's Office

- Used ESRI products for 5+ years
- “Upgraded” with each new version
- Using live GIS in COMPSTAT briefings
- Use GIS as a foundation of all analysis within JSO

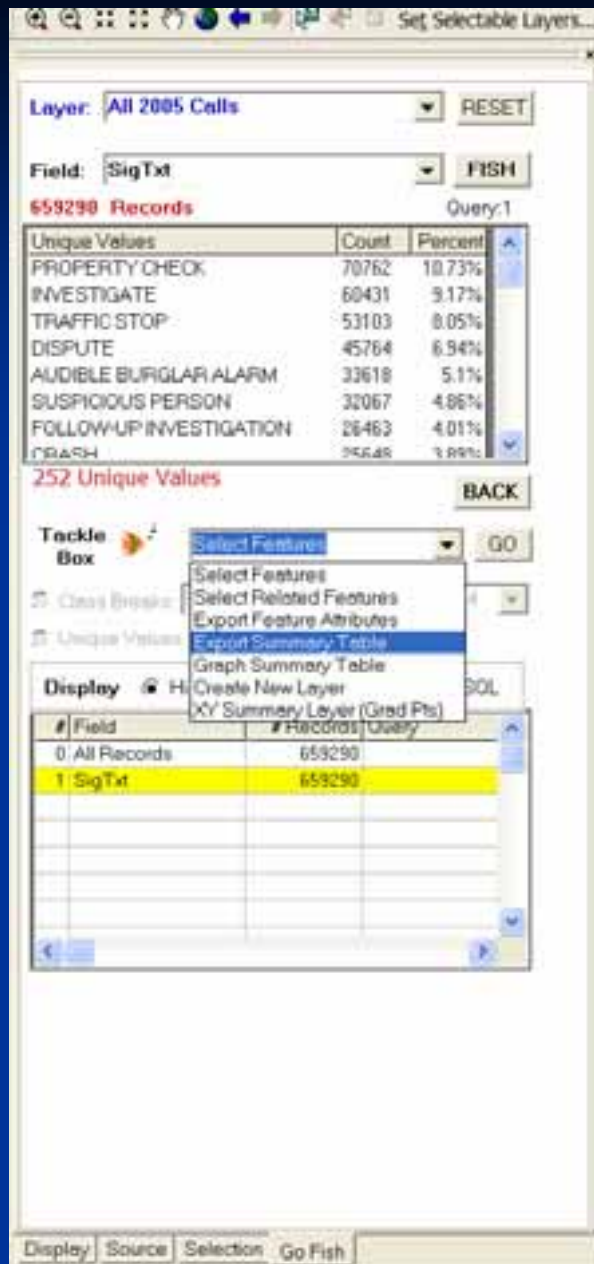
# JSO and ESRI

- Jonathan Fisk, Project Manager, ESRI Charlotte
- Several meetings to determine needs
- Understood that JSO's needs were not unique
  - Not crime analysis specific
- Created script to aid in drill-downs and on-the-fly analysis

# Fish Tool



- Allows drill down of any data layers in project
- Can choose any field to drill
- Displays a count and percentage of unique values in data set
- Allows different ways to display data
- Displays as a tab on Table of Contents
- Free download from ESRI website



# Fish Tool in Action

# Contact Information

Stacy Belledin

Crime Analysis Unit

Jacksonville Sheriff's Office

Jacksonville, Florida

[stacy.belledin@jaxsheriff.org](mailto:stacy.belledin@jaxsheriff.org)

<http://support.esri.com>