



CITY OF  
BOYNTON BEACH



## Web Based GIS Implementation for the City of Boynton Beach, FL

5/3/2007

## Introduction

---

**Jeff Albee** – Applied Technologies Manager/ PM  
AMEC Earth & Environmental  
Nashville, Tennessee

In the Summer of 2006 the City contracted with AMEC to implement Orion's OnPoint Web GIS

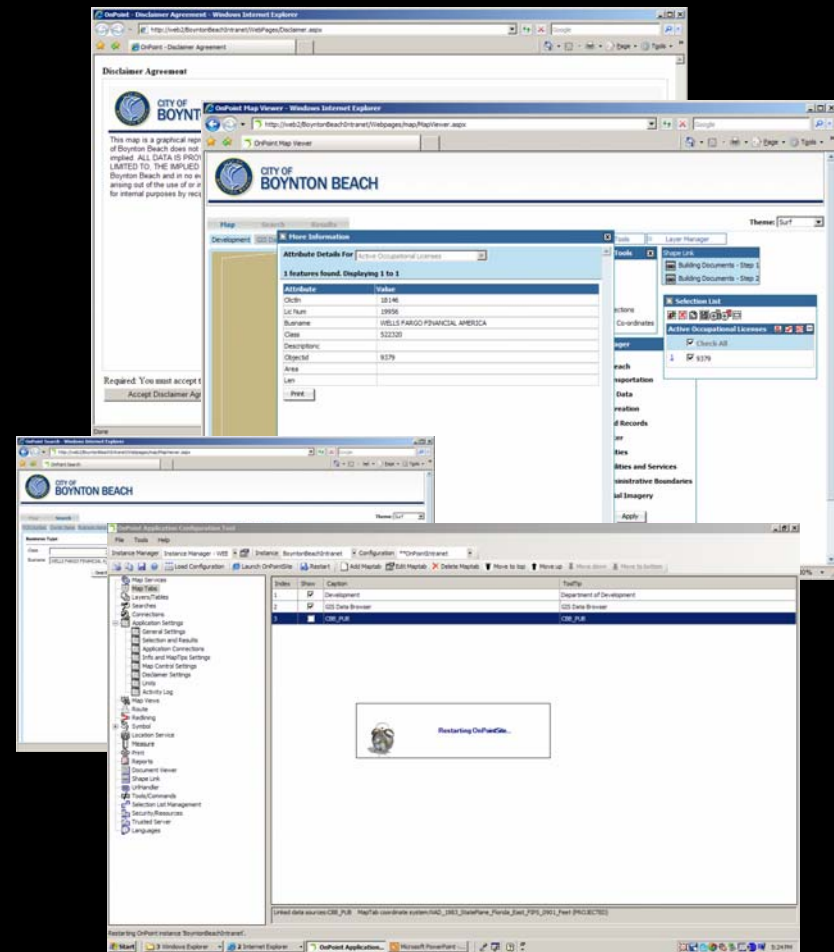
### Project Case Study

- City's Needs (why?)
- Implementation Process (how?)
- Summary/Lessons Learned

# Web Based GIS Implementation, City of Boynton Beach, FL

## Driving Forces

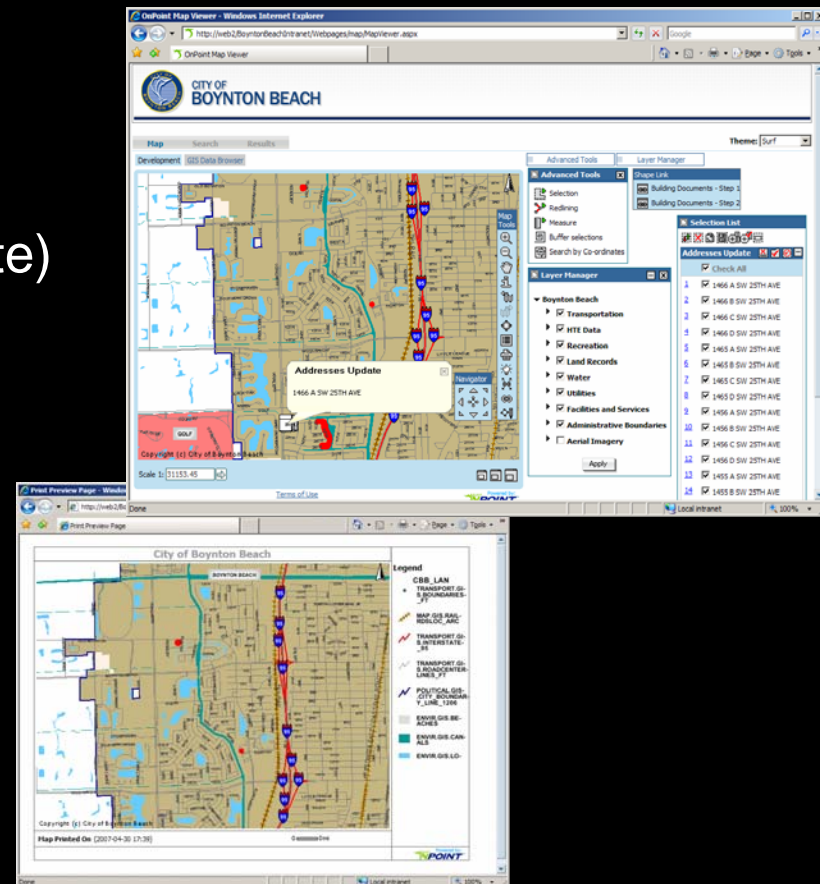
- Region's growth opportunities
- Raw material in place
  - staff to maintain
  - data
  - hw/sw
- Vision
  - Expand beyond current system
  - Easy to administer
  - City departments and public
  - Maintainable and extendible



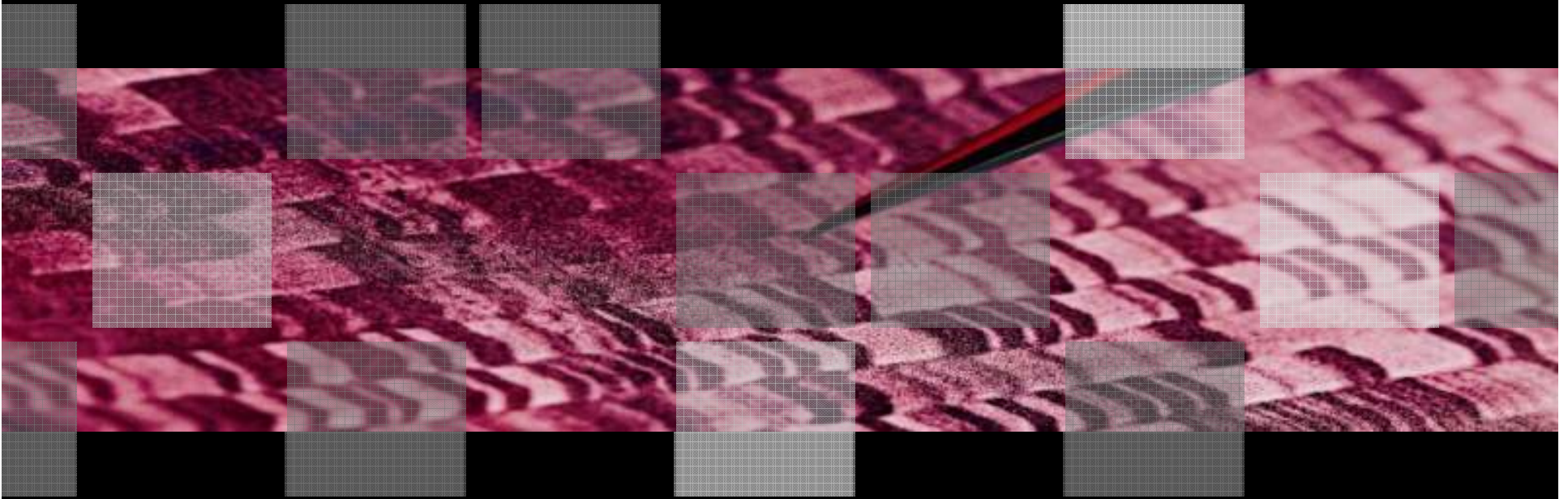
## Web Based GIS Implementation, City of Boynton Beach, FL

### Opposing Forces

- Financial Resources
- Human Resources (to Integrate)
- Evolving Technology
  - 9.2 Rollout
  - OP 6.0 Rollout
- Addressing (City/County)
  - No Connectivity
  - Multiple Datasets





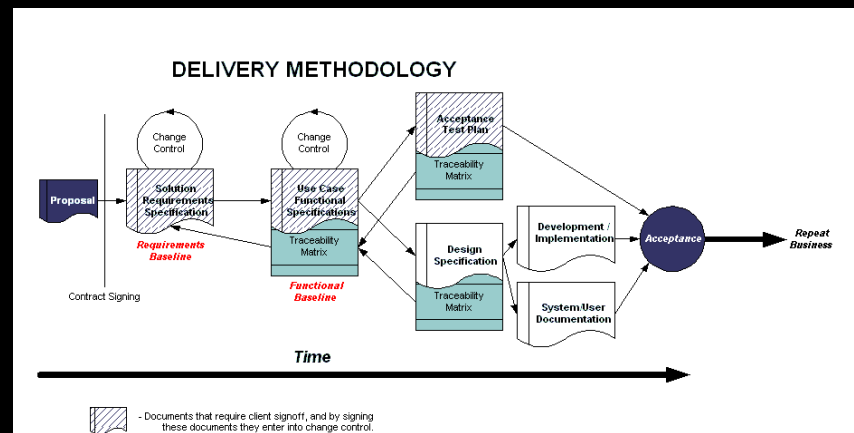


Implementation Process – How did they do that?

## Web Based GIS Implementation, City of Boynton Beach, FL

### Rational Unified Process

Industry standard practices for development of complex software/hardware solutions. Described using the Unified Modeling Language.

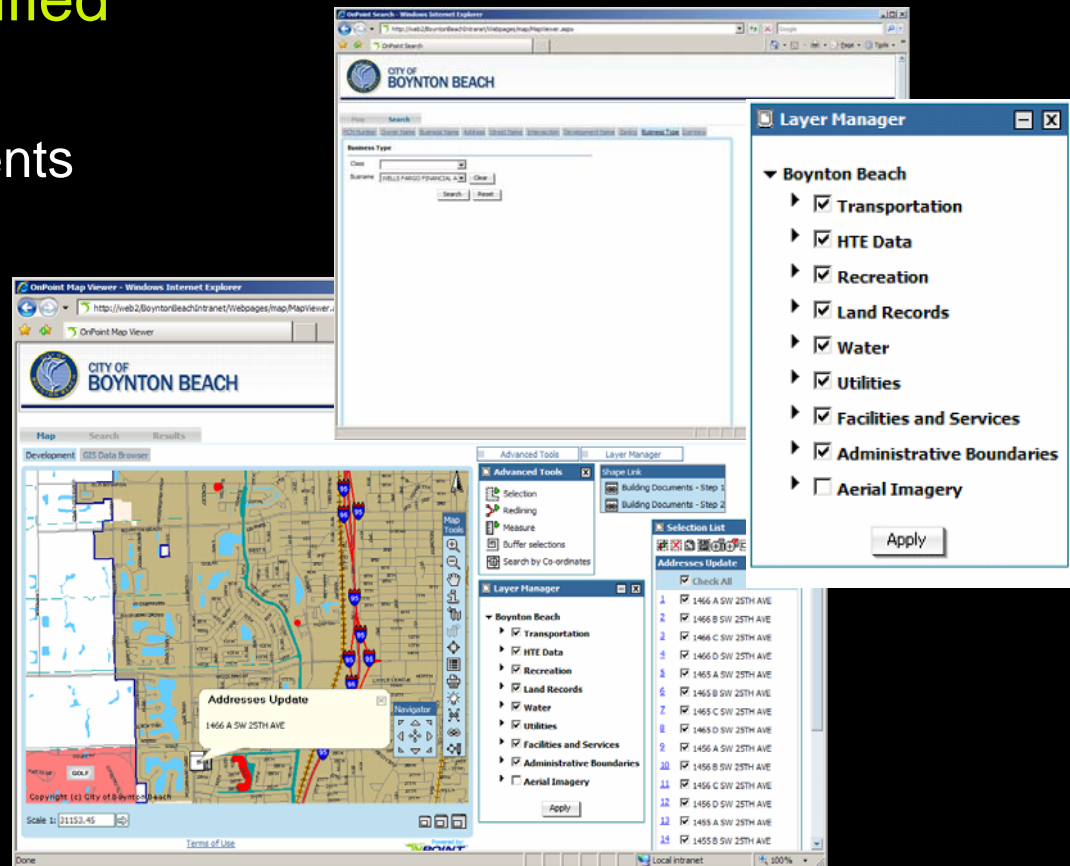


**Lessons Learned:** You cannot successfully build systems *without* a methodology.

## Web Based GIS Implementation, City of Boynton Beach, FL

### Our Process...simplified

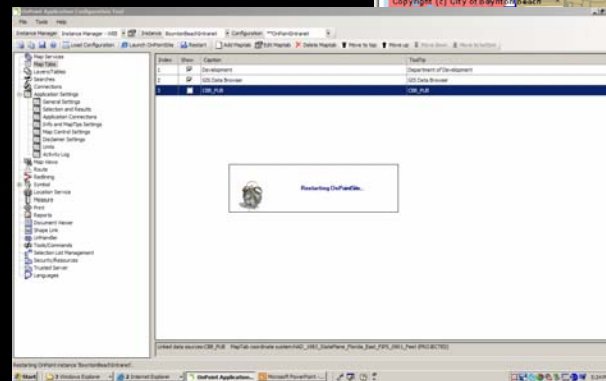
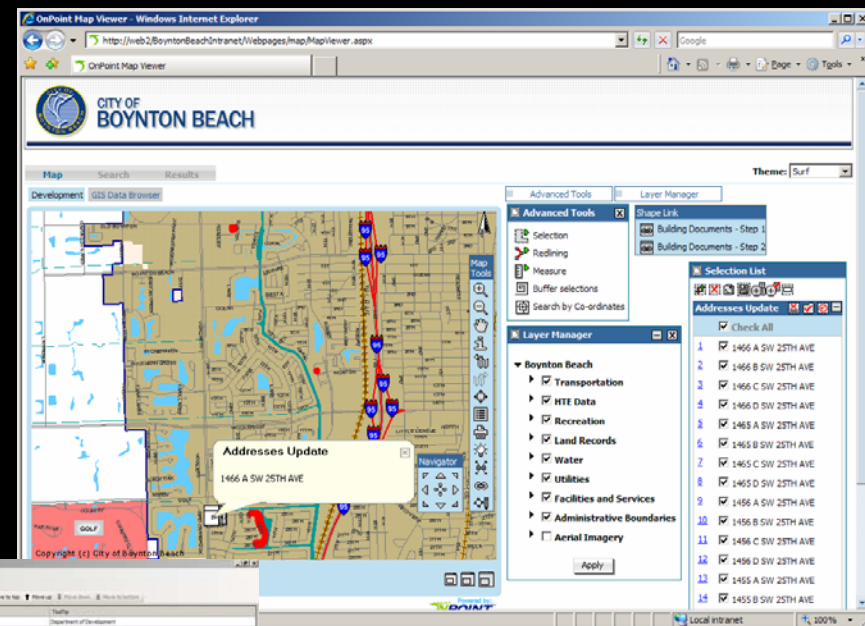
- Define the requirements
  - Inter/Intranet browser
  - Laserfiche
  - HTE data
  - Addressing
  - Printing
  - Reporting



# Web Based GIS Implementation, City of Boynton Beach, FL

## Our Process...simplified

- Install and Train
  - Concurrently
- Confirm the Requirements
  - Verify requirements
  - Enable self-sufficiency





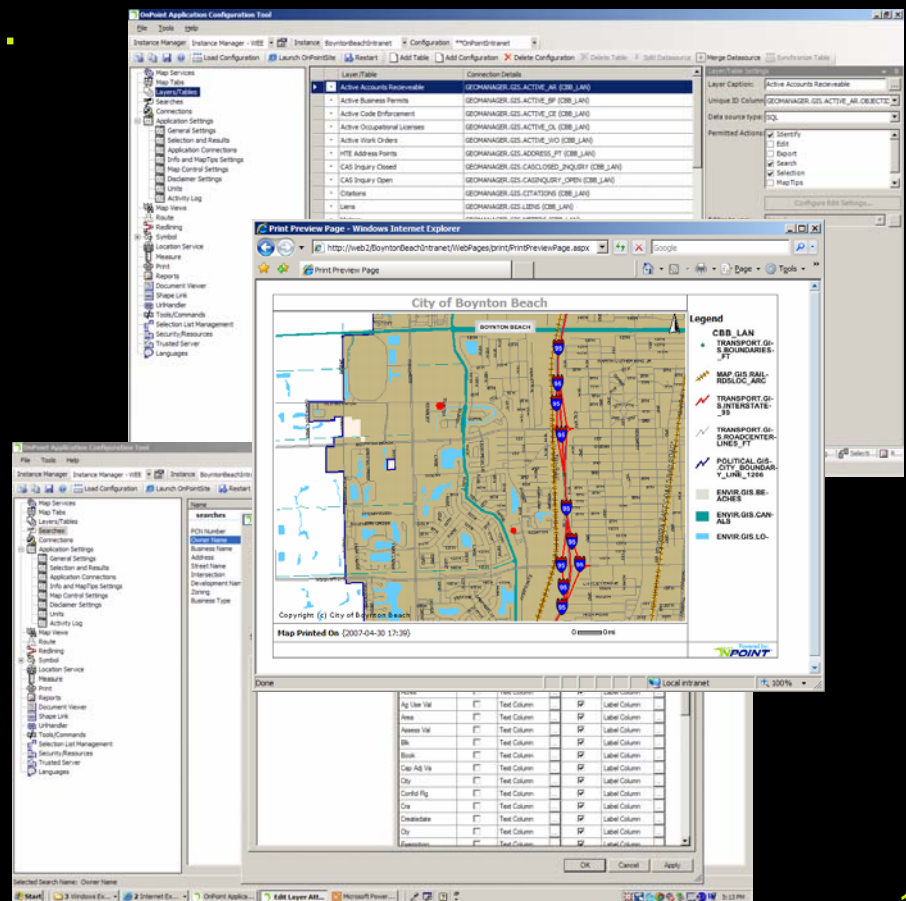


## Summary/Lessons Learned

## Web Based GIS Implementation, City of Boynton Beach, FL

The tools are getting better...

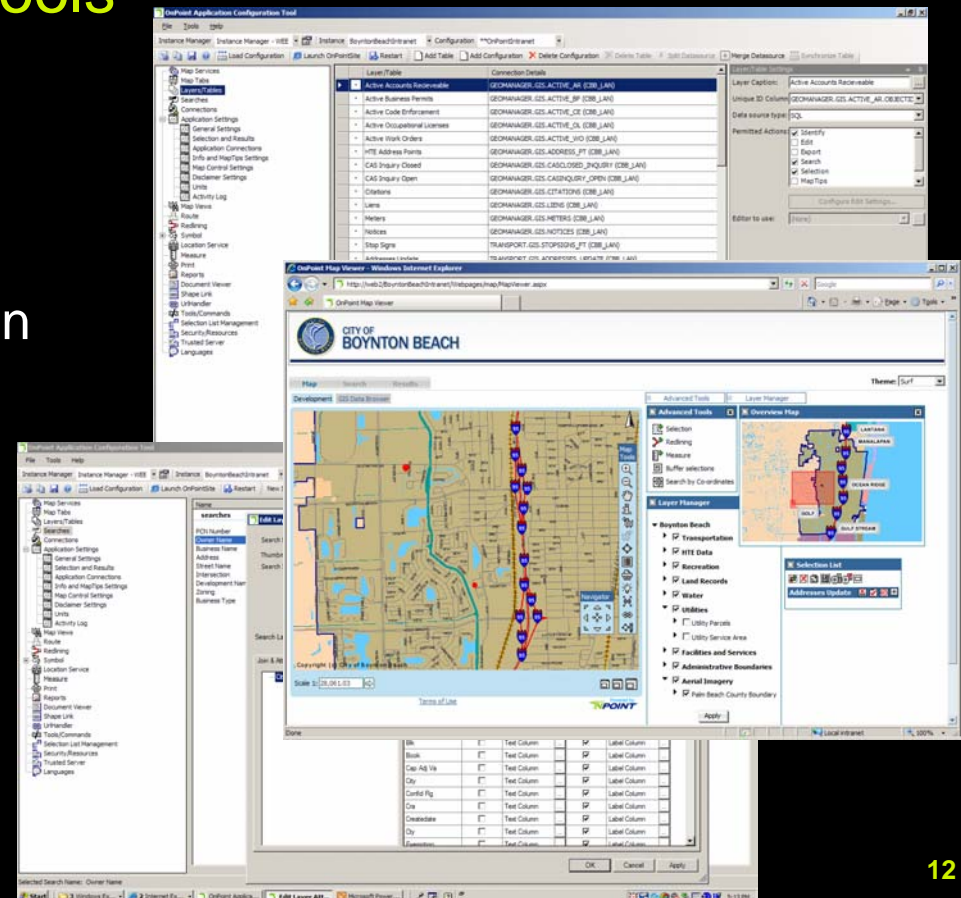
- Integrated w/ .NET
- Easier to administer
  - Easily extendible
  - No programmer required
- Multi platform/Multi version
  - ArcIMS
  - ArcGIS Server
  - Etc.



## Web Based GIS Implementation, City of Boynton Beach, FL

### Use Project Management Tools

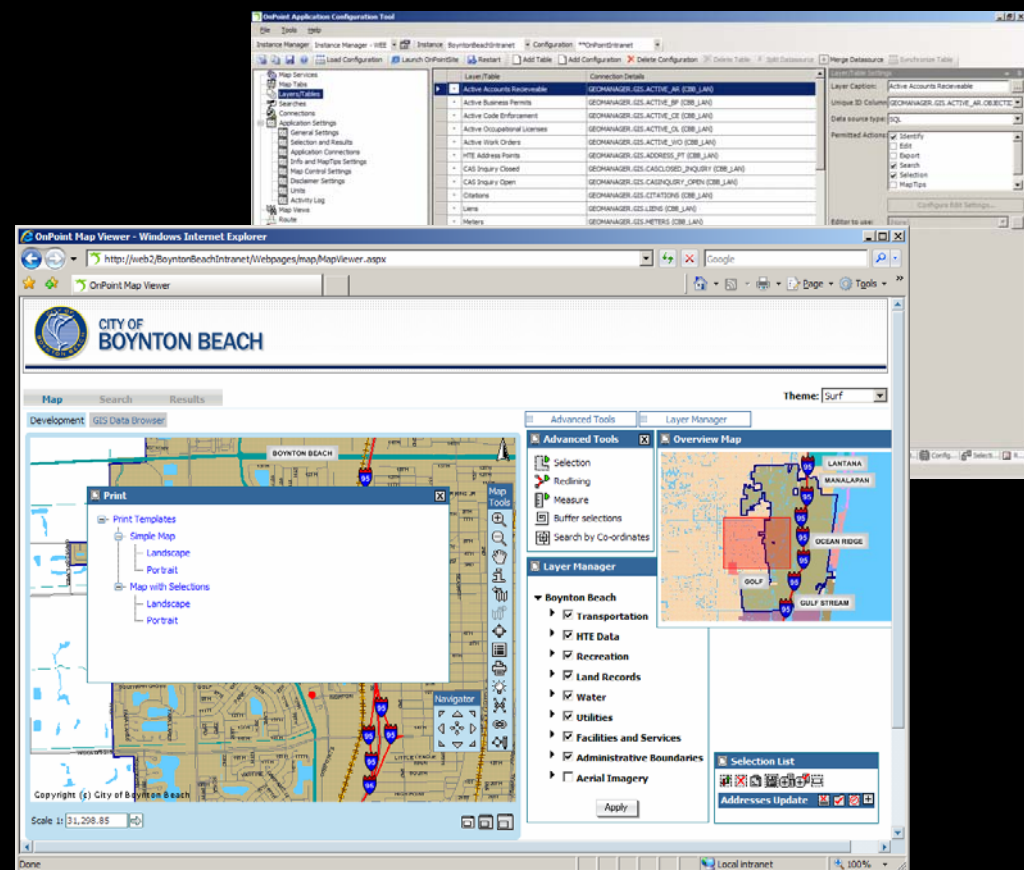
- Collaboration framework
- Common view of the solution
- To deliver quality on time
- Supports good communication
- Control releases/deliveries
- Efficiency
- Reusability



## Web Based GIS Implementation, City of Boynton Beach, FL

### Learn From Others

- Consultants
- Other govt. agencies
- Other industries







Jeff Albee – Applied Technologies Manager  
AMEC Earth & Environmental, Inc.  
Nashville, Tennessee USA  
615.333.0630

[jeff.albee@amec.com](mailto:jeff.albee@amec.com)

*Shaping the Future*