

# **The Economic Benefits of GIS:**

## **A County's Perspective**

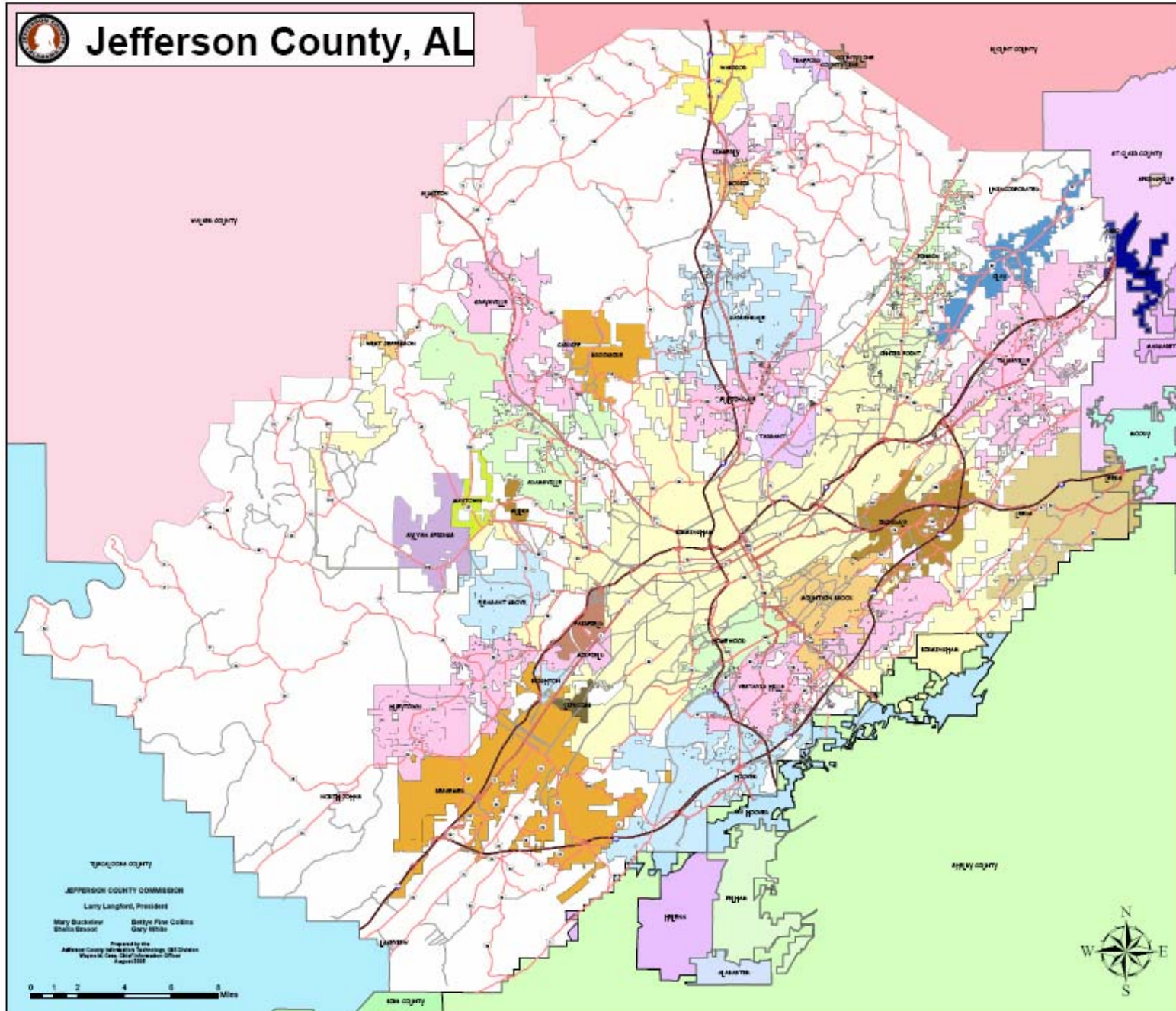


# Jefferson County, Alabama

- About 1,114 square miles
- Located in the North Central portion of Alabama
- 40 municipalities
  - Largest is Birmingham
  - Smallest is North Johns (population 142)
- Large unincorporated areas mostly rural or corporate owned properties



# Jefferson County, AL







# Jefferson County, Information Technologies

- Historically, a primary leader in most aspects of Information Technology for the State of Alabama
- GIS is no exception.
  - Active GIS since 1987
  - Internationally recognized



# GIS Division Serves Internal and Commission Oversight Departments:

- Land Development
- Environmental Protection
- Environmental Services
- Economic Development
- Roads and Transportation
- Tax Assessor
- Tax Collector
- Board of Equalization
- Community Development
- Inspection Services
- Department of Revenue
- General Services
- County Commissioners
- Jefferson County Attorney
- Sheriff's Department
- EMA
- Jefferson County Economic and Industrial Development Authority
- District Attorneys
- Jefferson County Housing Authority
- Black Warrior Land Trust



# GIS Division Provide Support For:

- 40 Municipalities
  - Police
  - Fire
  - 911/Dispatching
- Fire Districts
- School Boards
- Other Counties
- Federal Agencies
  - FBI
  - FEMA
  - USGS
  - Census
  - U. S. Army Corps of Engineers
  - TVA
  - ISC – Civil Division
  - Housing & Urban Development
- State Departments
  - ALDOT
  - ALDOR
  - ADEM
  - Health Department
  - Abandon Mine Land Relations
- Utilities
  - Large and Small
- Regional Planning Commission
- Ruffner Mountain Nature Center
- CAWACO
- Metropolitan Development Board



# GIS Staff

- 8 current full time staff members
  - 4 Application Development
  - 3 Data Coordination
  - 1 Manager
- 2 intern positions
- On average, it takes over 18 months to hire a qualified candidate.
- Operating Budget less than \$1 million a year
  - (This includes almost \$500,000 for data collection.)



Since 1996 the GIS Division of the DOIT has been attempting to track the fiscal benefits of using GIS.

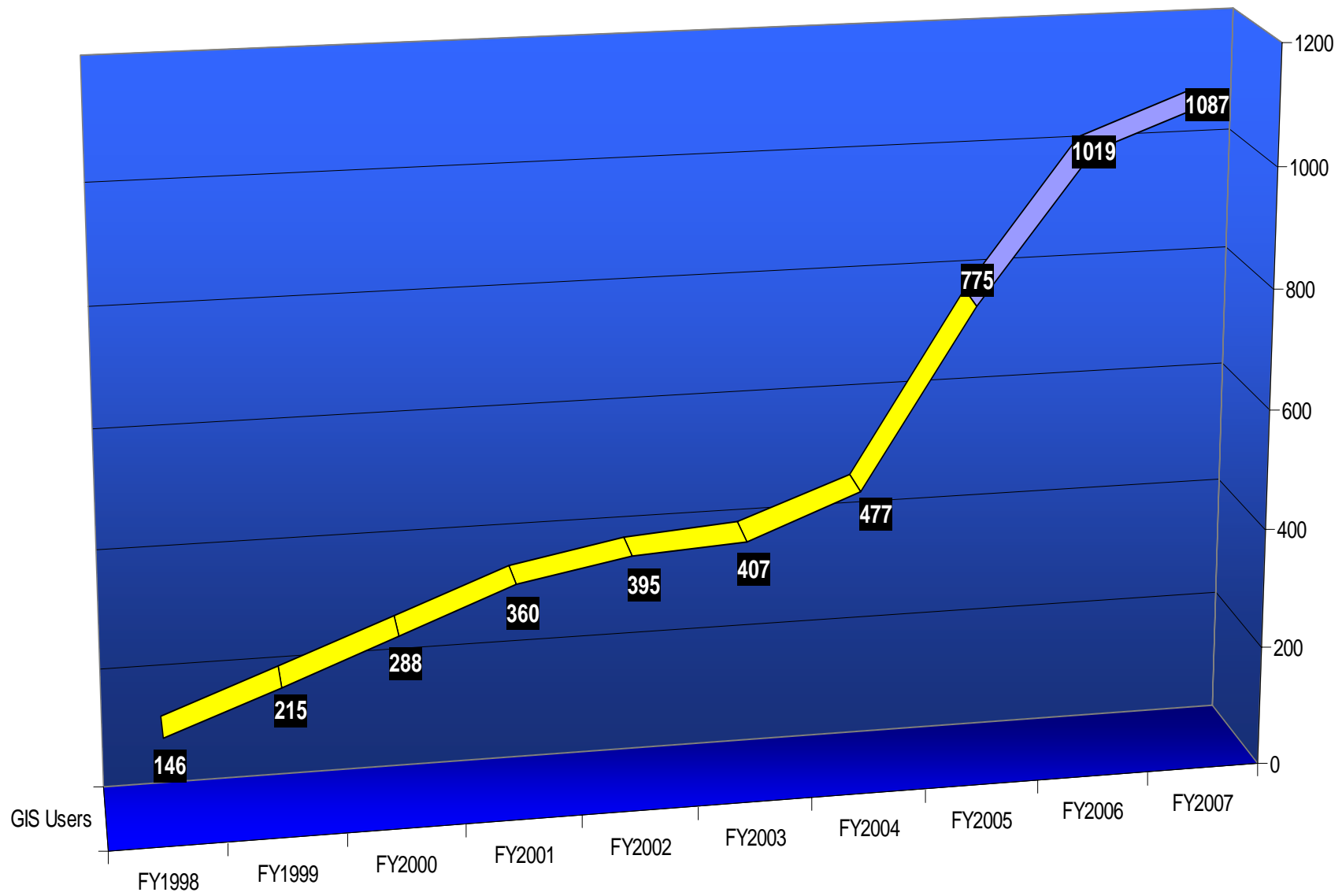




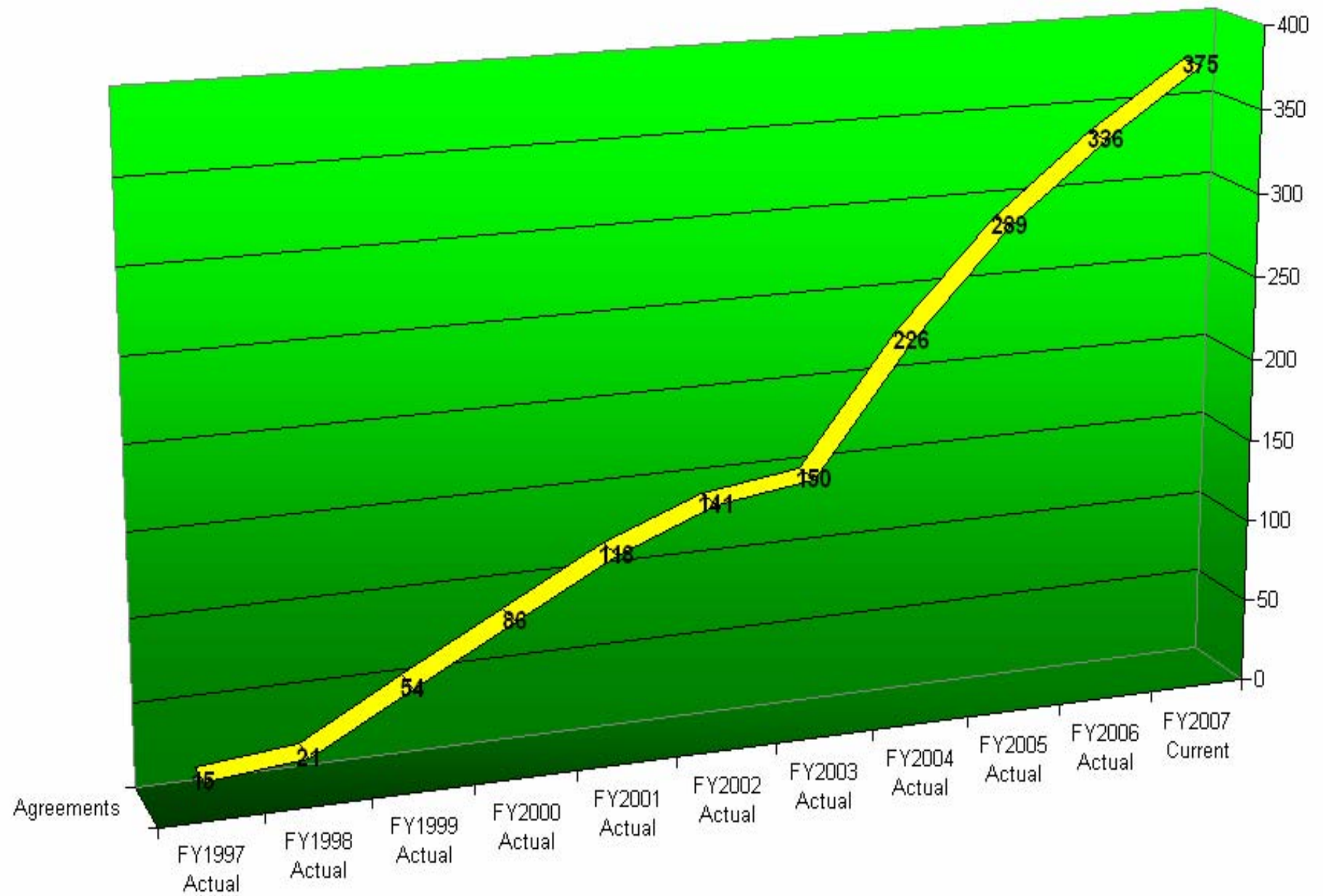
# We have done this by tracking:

- Total number of GIS users
- Total number of data agreements (groups outside county departments)
- Total number of departments using GIS
- Total county departments' savings by the use of GIS data
- Total number of other agencies supported by GIS
- Value provided to outside agencies
- Total revenues
- Matching grant funds in which GIS participated to obtain

## GIS Users



Total Number of Data Agreements



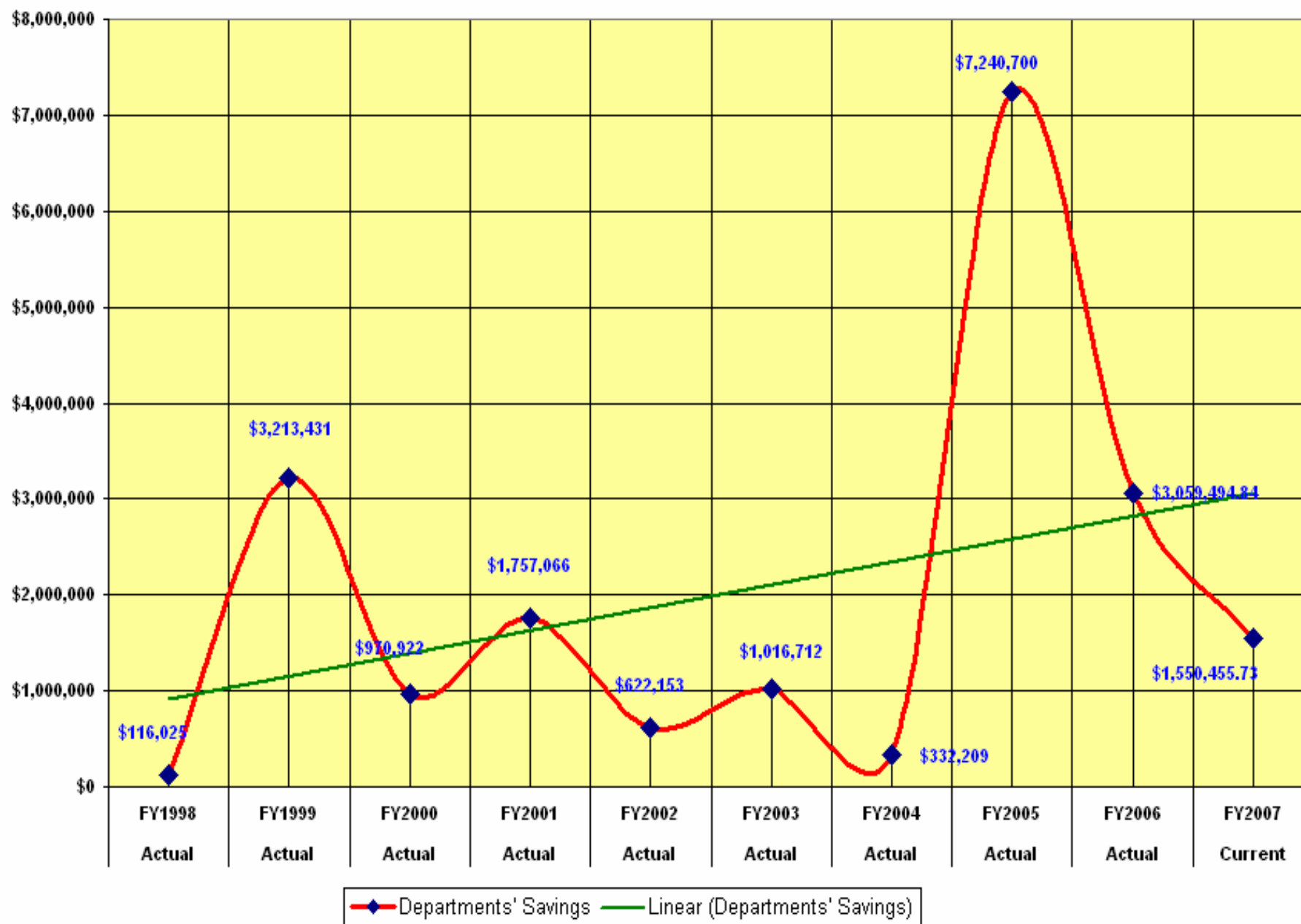


# Departments using GIS

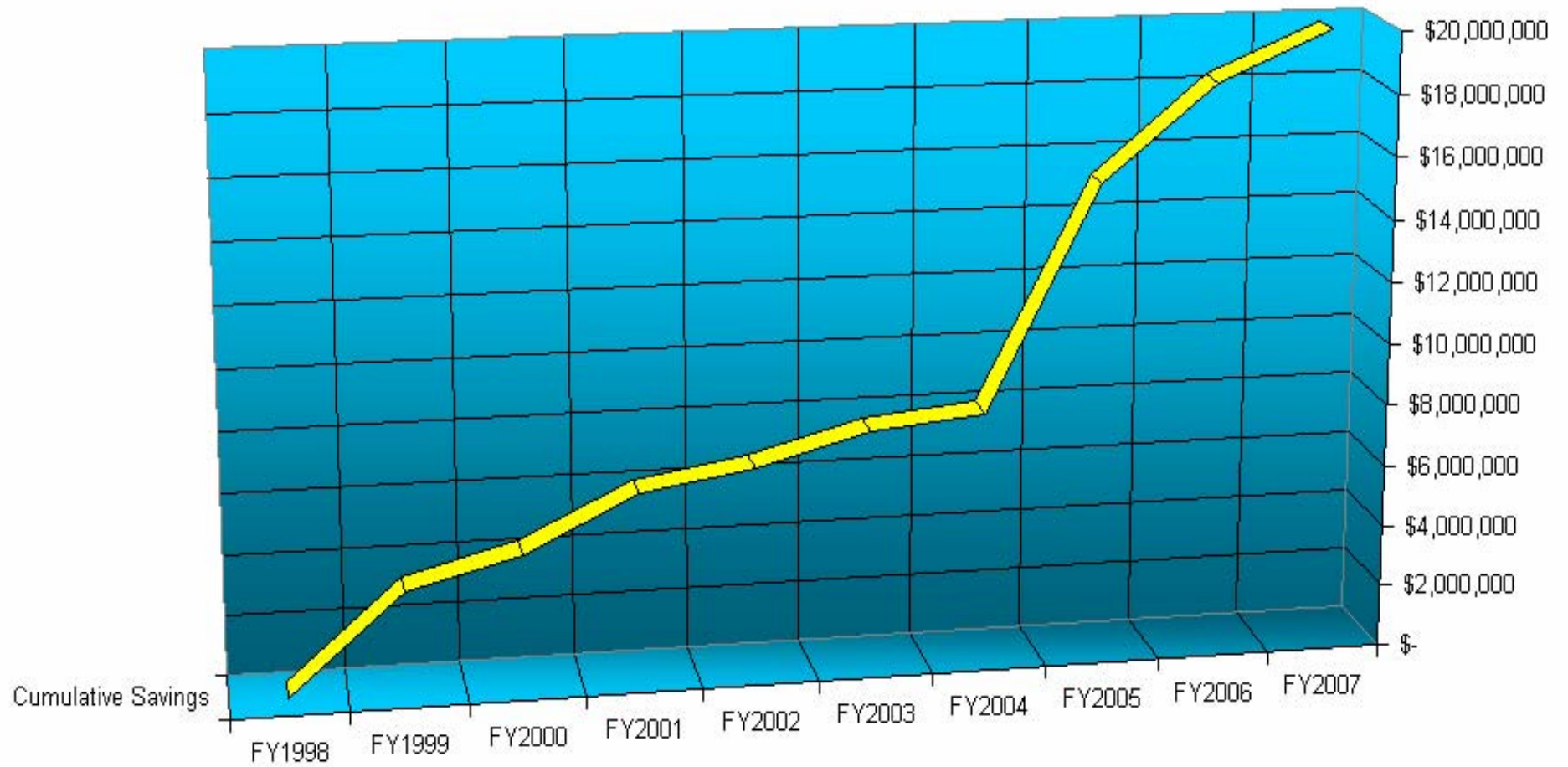
- Almost all departments are using GIS.
- Started with 7 key departments
- Spread as new/more accurate data and software have become easier to use.



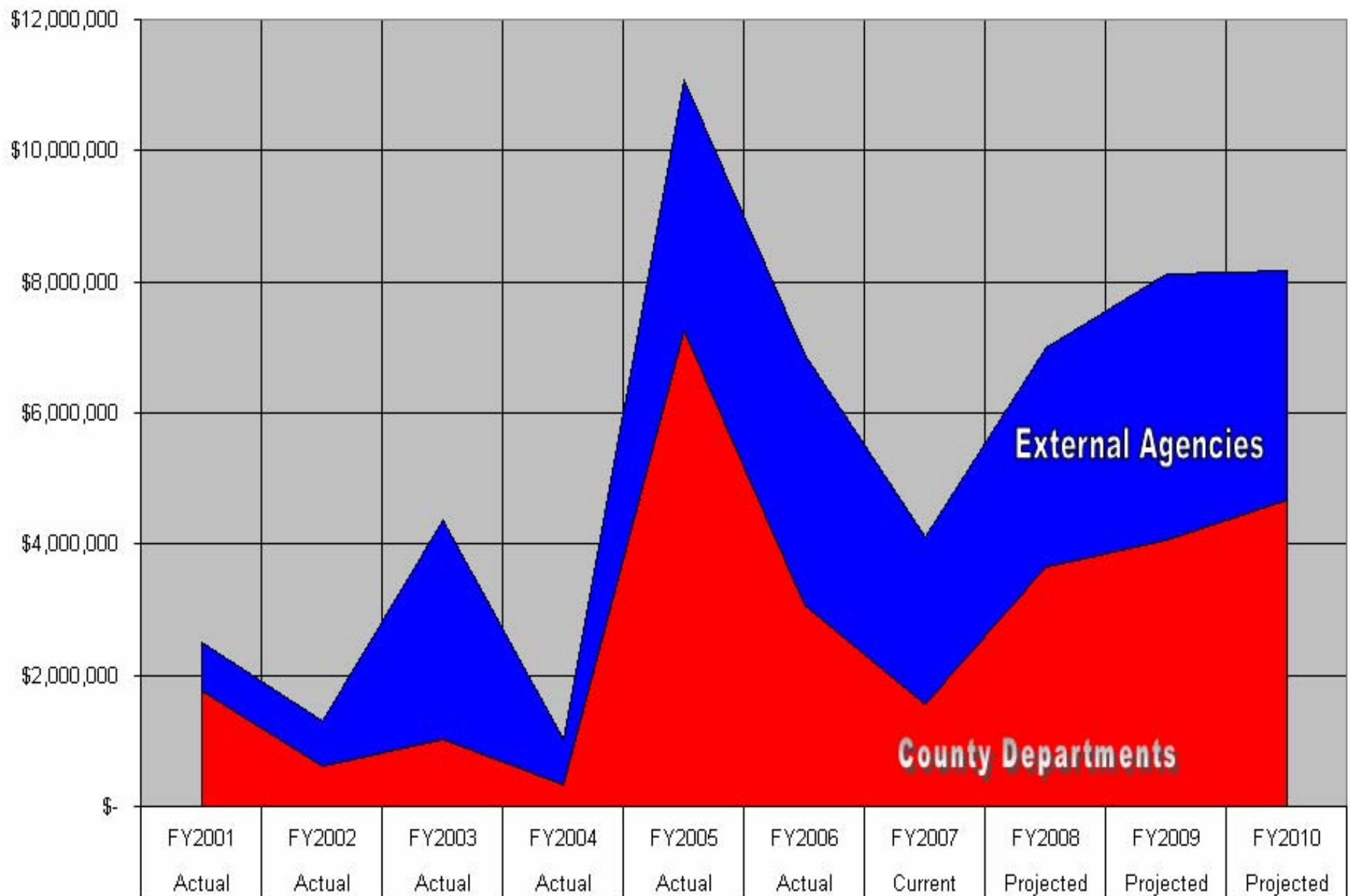
## Total County Departments' Savings by the use of GIS data



## Cumulative Departmental Savings



Projected Value of GIS to 2010



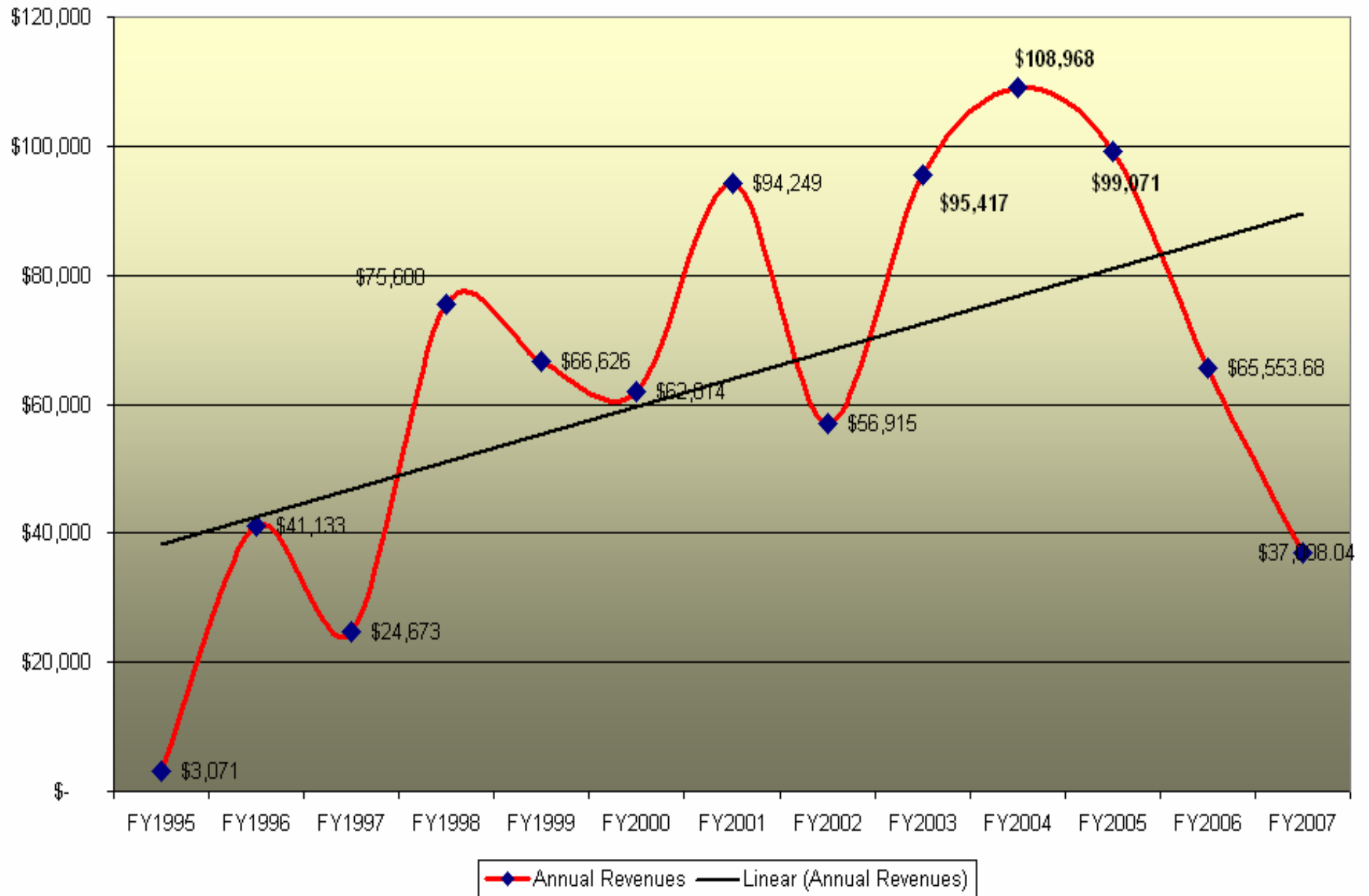


## We Have Found with Revenues:

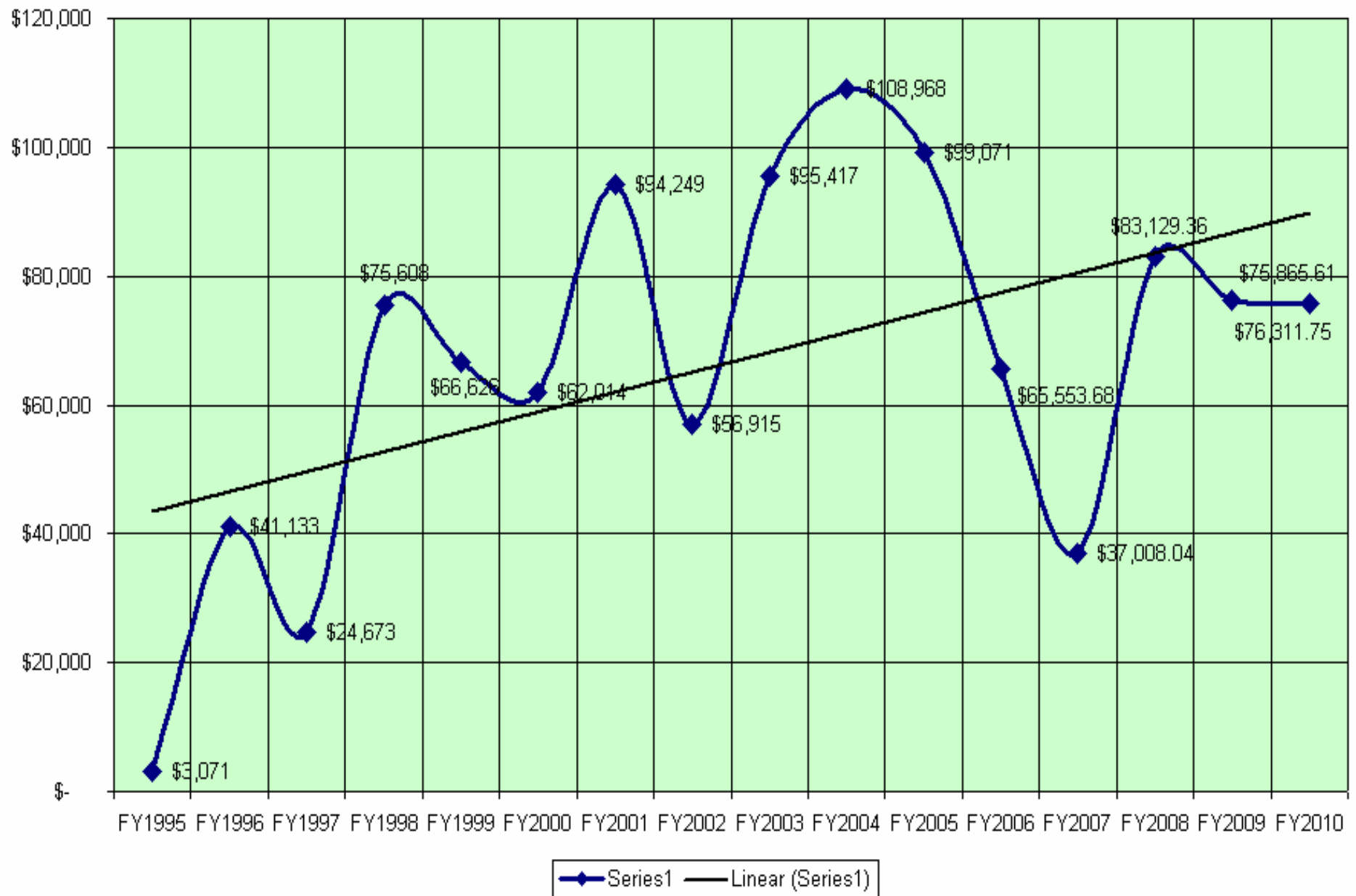
- GIS data is used to primarily support engineering/development.
- Revenues are a very small portion of overall value GIS contributes to the County.



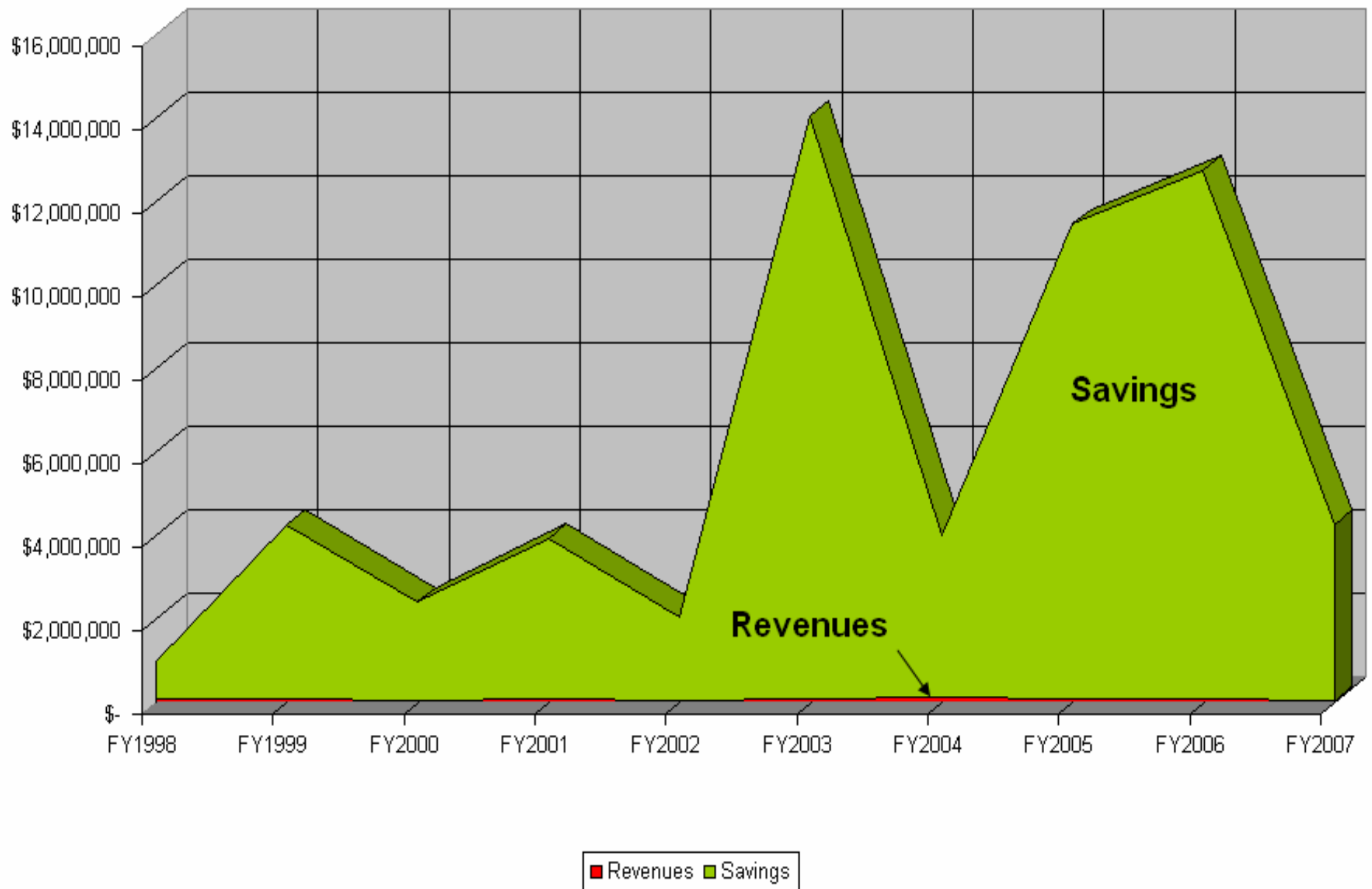
## Total Annual GIS Revenues Since 1995



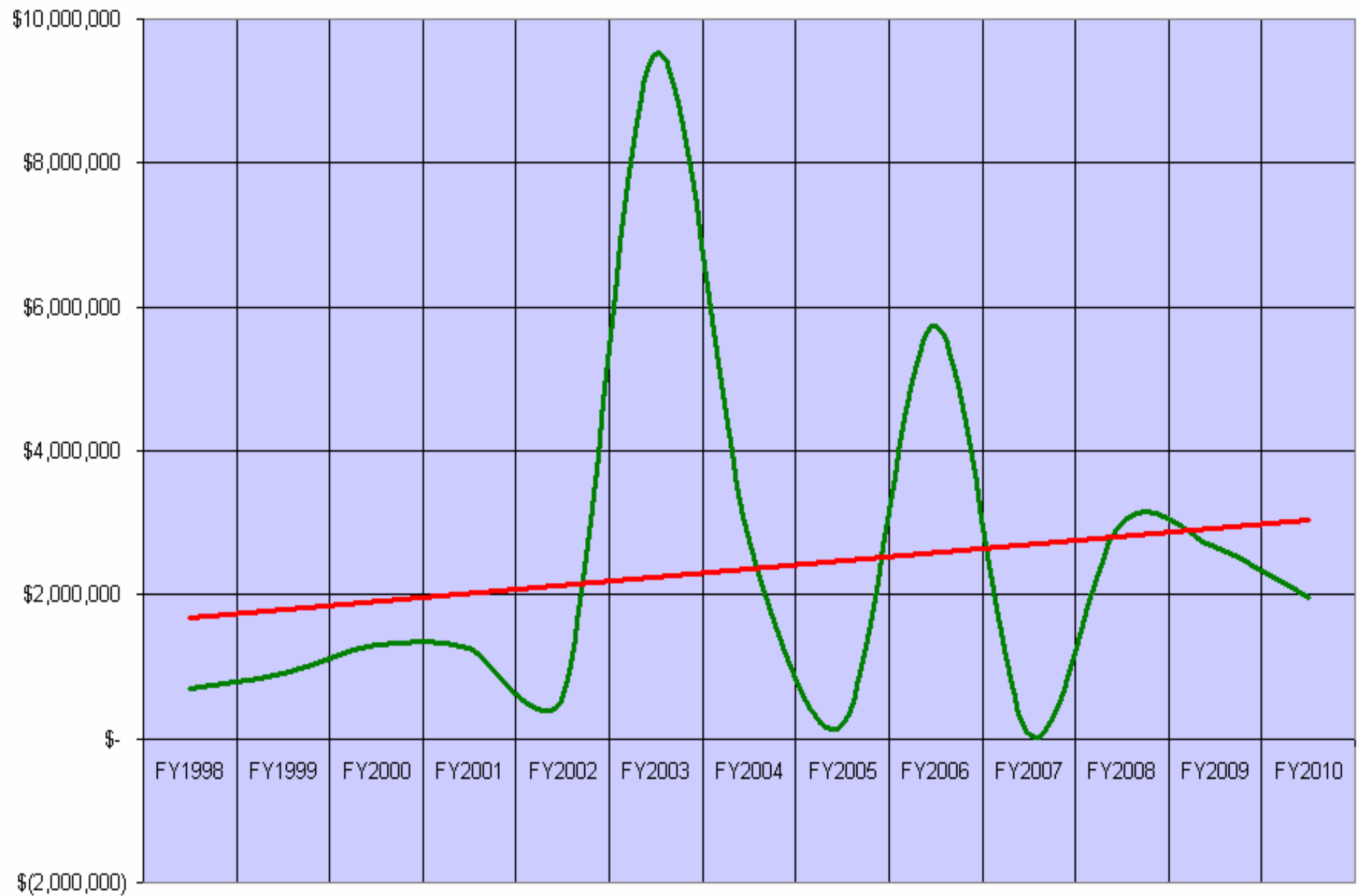
# Total Revenue Trends Projected to 2010



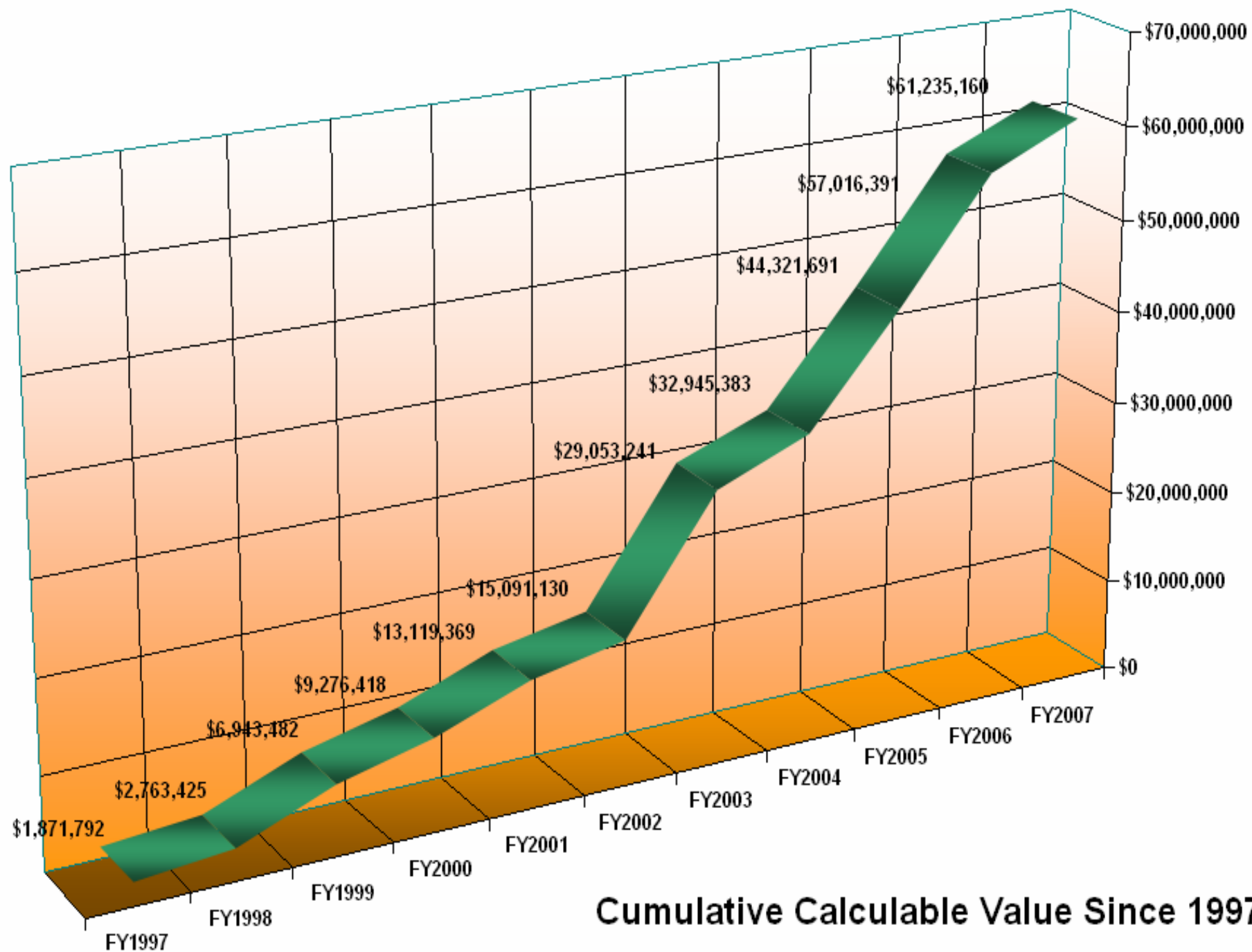
# Revenues to Savings Comparison



## Matching Grants Trend







**Cumulative Calculable Value Since 1997**



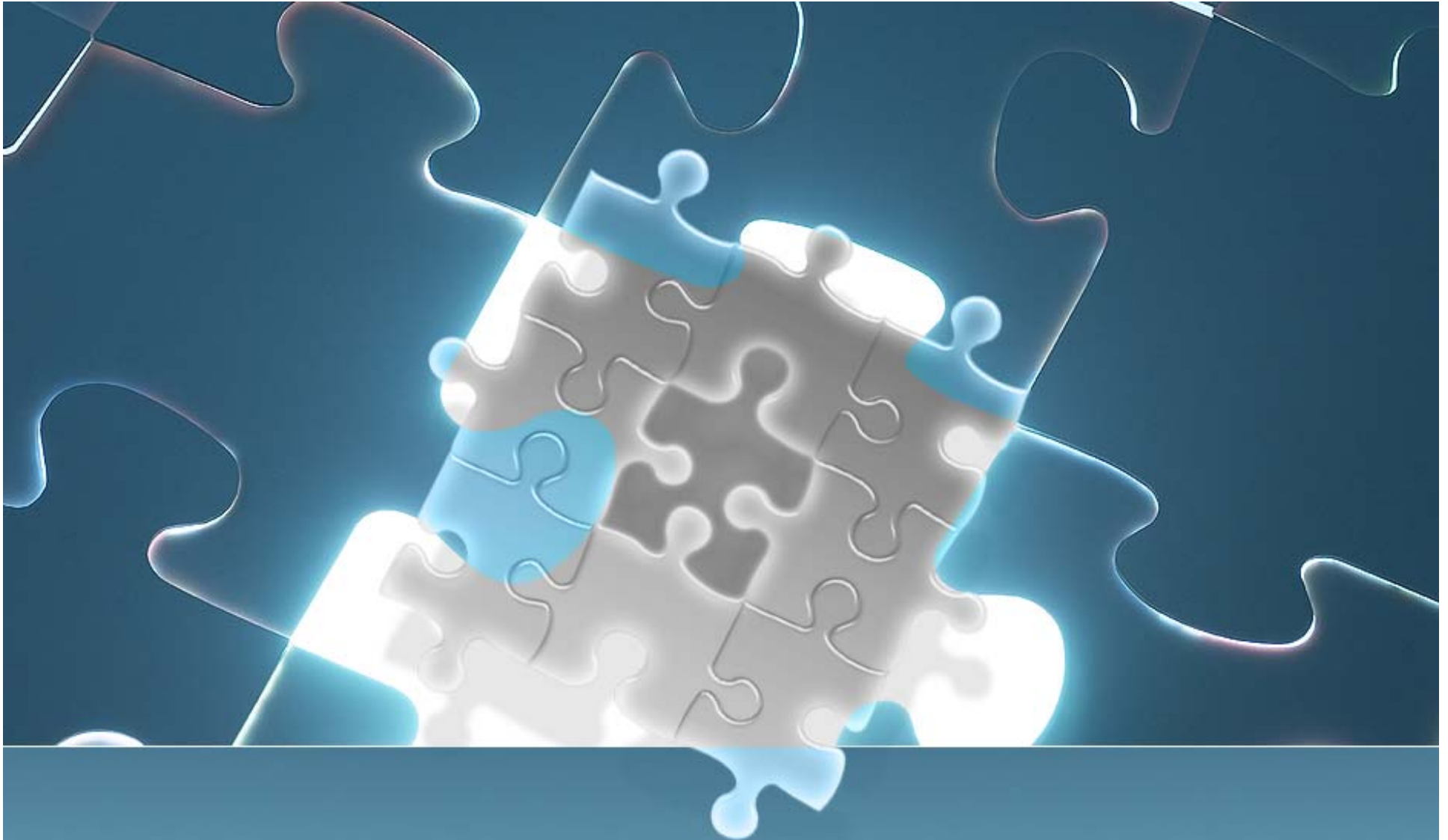
# Benefits Notes

- 11 ½ years recorded over \$61 million in cumulative revenues and savings.
- Much is not recorded.
  - Individual using a GIS application to more efficiently do job
  - Benefits from GIS web applications
- Recorded numbers are conservative figures (values have not changed in over 5 years).
- Removing operating budget costs, the GIS division benefits the County by nearly \$5 million a year.



# Future Measurement Difficulties

- Less dependent on hard media like CDs and DVDs
- Greater use of Web user interfaces
  - ArcIMS
  - ArcGIS Server
- More user control



Questions ?