

A stylized banner for the SERUG 2007 conference. It features a blue sky background with a city skyline in the center, including two tall water towers and several skyscrapers. A yellow sun is visible behind the buildings. The banner is flanked by two palm trees on each side. The text "SERUG 2007" is written in large, bold, black letters on the left side of the banner.

SERUG
2007

Jacksonville, FL
May 2-4

Water Utilities Track

www.esri.com/serug

ESRI Team Water



- ESRI Virtual Team
 - Industry Manager
 - Development Staff
 - Technical and Sales Staff
- Database Design Meetings
- Data Models
- Team Water Tools (<http://arcscripts.esri.com>)
- Support User Group Meetings
- *WaterWrites* Newsletter

ArcGIS Server



- Web Service Trace Tools
- Mobile SDK
- ArcGIS for AutoCAD

Web Service Trace Tools



Web Mapping Application - Microsoft Internet Explorer

File Edit View Favorites Tools Help

Address <http://clk-lundeen/Larry/default.aspx> Go Links

Web Mapping Application

ESRI | ESRI Support Center | Help

Tasks

Network Trace

Results

Map Contents

- Potable Water
 - Water System Valves
 - Water Fire Hydrants
 - Water Sources
 - Water_Network_Junction
 - Water Laterals

Navigation

Overview

Network Trace

Add flags & barriers:

Set the Trace Type: Find Connected

Disable Layers:

- ☐ Water System Valves
- ☐ Water Fire Hydrants
- ☐ Water Sources

Trace Settings:

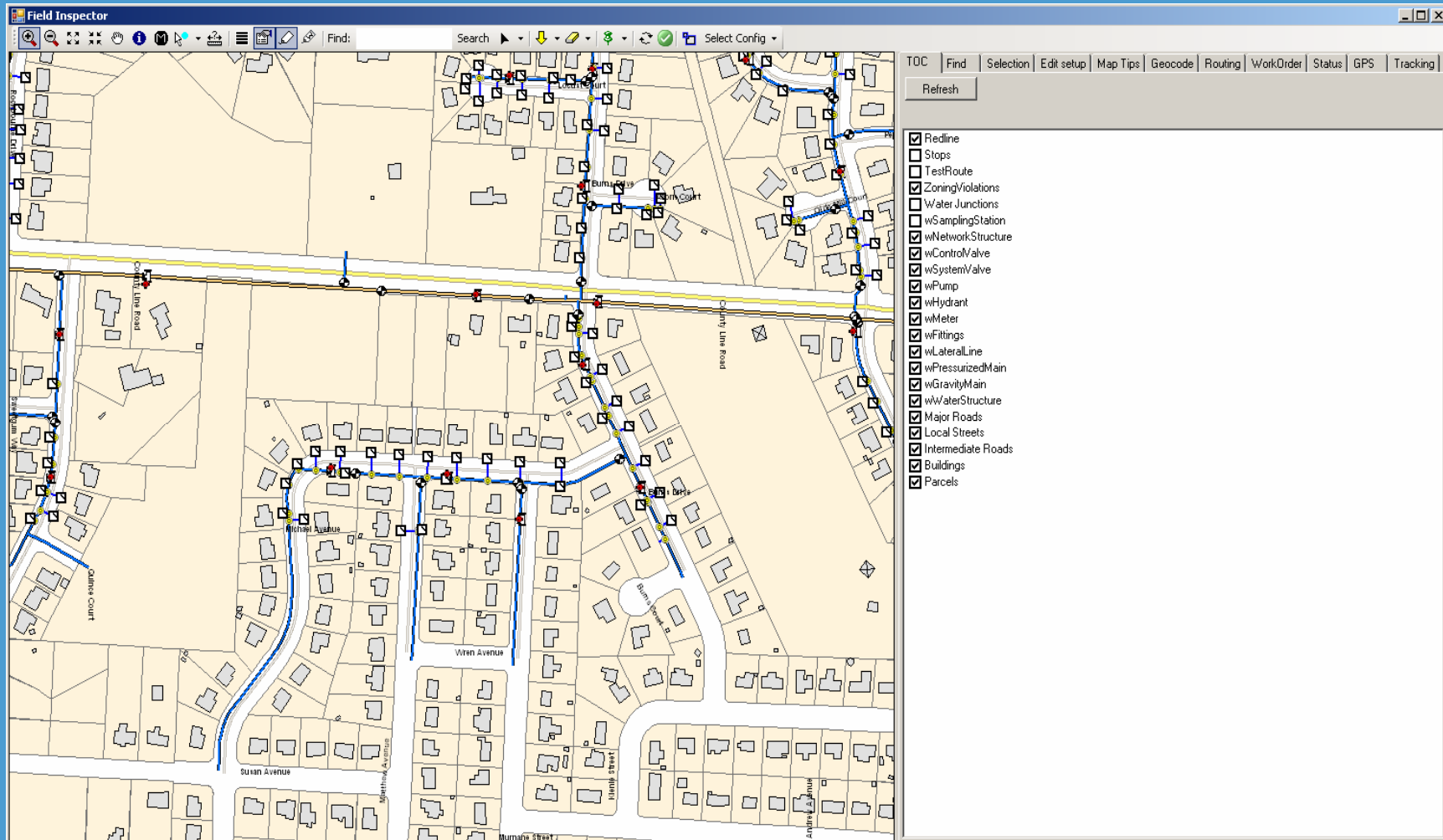
- ☒ Trace Indeterminate Flow
- ☐ Trace End Features Only

Execute

0.06 0.03 0 0.06 Miles

Done Local intranet

ArcGIS Server Mobile



ArcGIS for AutoCAD



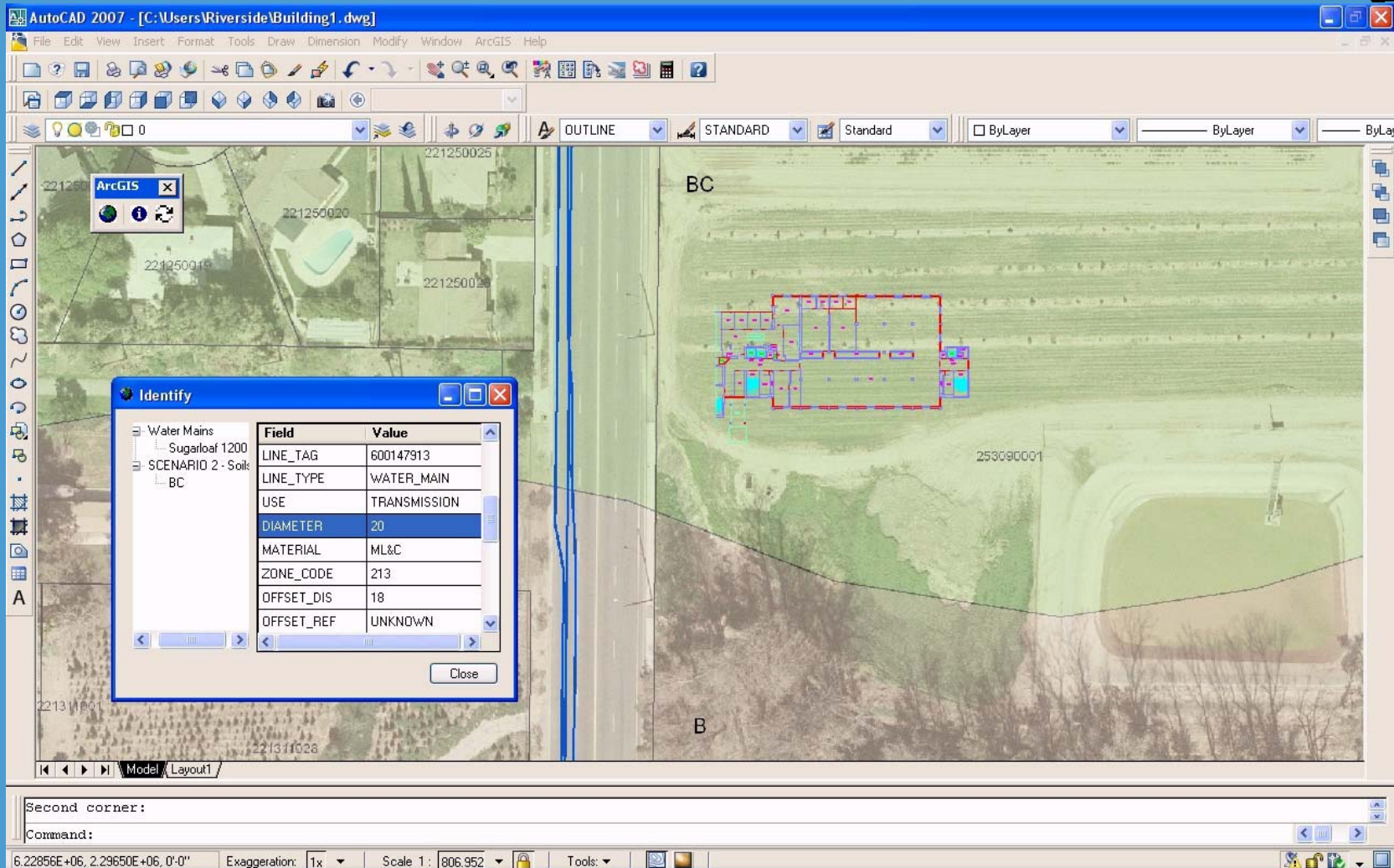
- Available now
- Free download (www.esri.com/autocadapp)
- Requires:
 - AutoCAD 2007
 - ArcGIS Server 9.2 (somewhere)
- Watch for recorded CAD seminar (<http://training.esri.com/campus/seminars/recordings.cfm>)

ArcGIS for AutoCAD



- View ArcGIS Server map services.
- Dynamically refresh.
- Identify features .
- Cut and Paste values from Identify dialog box.
- Toggle dynamic refresh on/off.
- Toggle visibility on/off.

ArcGIS for AutoCAD



Stay Involved



- Visit exhibit hall.
- Submit an article for *WaterWrites*.
- Tell us what tools you need .

ArcGIS Server 9.2 SP2 Editing Task



- Now three options:
 - Nonpooled Service/Versioned Data – Supports undo/redo. You can choose to save or discard edits.
 - Nonpooled Service/Nonversioned Data – Undo/Redo is not supported. You can choose to save or discard edits.
 - Pooled Service/Nonversioned Data – Undo/Redo is not supported. Edits are saved to database immediately.

ArcGIS Server 9.2 SP2 Editing Task



- Now customizable
 - Panes can be added/removed.
 - Tools and toolbars can be added/removed.
 - Attributes for editing can be filtered.
 - Attributes can be read-only.

Executive Dashboards

