

# Fort Stewart/Hunter AAF Joint Land Use Study Implementation



*Coastal Georgia*  
Regional Development Center

Chris Chalmers, GISP

David Dantzler

Coastal Georgia Regional Development Center



# Overview

- Cooperative land use planning initiative between the U.S. Army and surrounding cities and counties of the region.
- Ultimately, the goal is to maintain the long-term viability of Fort Stewart/Hunter Army Airfield through regional cooperation and coordinated planning.



# Regional Significance of Fort Stewart



**LARGEST  
INDUSTRY IN THE  
SAVANNAH REGION**

**ECONOMIC IMPACT  
\$4.7 B**

**MILITARY PERSONNEL -  
24,839  
MILITARY PAYROLL -  
\$1.273 Billion**

**CIVILIAN EMPLOYEES -  
Assigned = 1,469  
Tenants = 1,207  
NAF = 1,833  
Total = 4,509  
CIVILIAN PAYROLL -  
\$160.9 Million**

**CONTRACTORS -  
1,386  
CONTRACTS -  
\$147 Million**

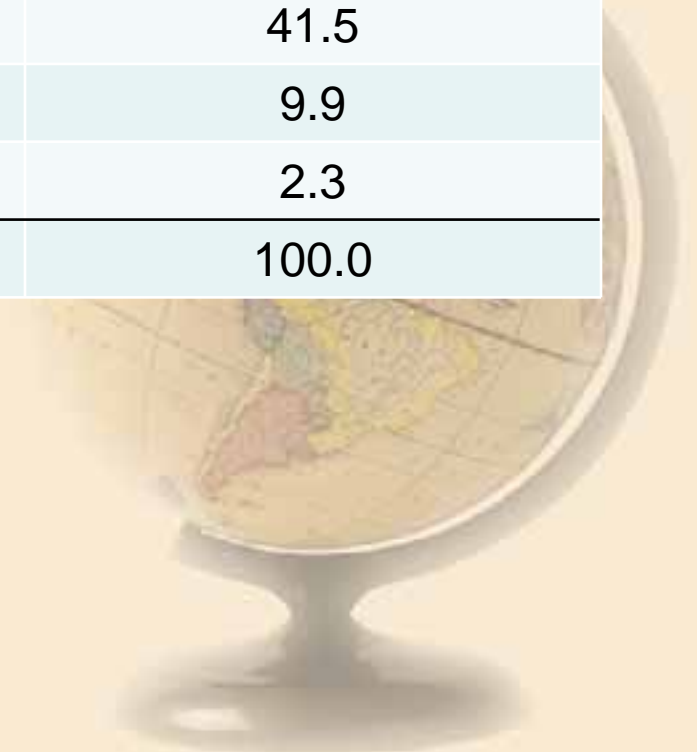
# Purpose

- Department of Defense program since 1985
- Goal:
  - Create a participatory, community based framework for land use planning around military installations
- Objectives:
  - To encourage cooperative land use planning between military installations and the surrounding community
  - To seek ways to reduce the operational impacts of military installations on adjacent land



# Distribution of Installation by County

County	Acres of FS/HAA Complex from County	Percentage of FS/HAA Complex from County
Bryan	108,780	38.2
Chatham	5,653	2.0
Evans	17,290	6.1
Liberty	118,256	41.5
Long	28,282	9.9
Tattnall	6,662	2.3
<b>TOTAL</b>	<b>284,923</b>	<b>100.0</b>



# Coordination – Communication – Balance

- Expansive growth facing the region
- Viability of the Military mission
- Compatible development
- Framework for intergovernmental relations
- Continued dialogue
- Utilization of the tools for quality growth
- Model of success for future land use issues
- Long-term Local Government commitment



# Partners Make it Possible

- ▶ Fort Stewart/HAA ~ Dept. of Defense ~ OEA
- ▶ Local governments
- ▶ Regional Development Centers
  - Coastal Georgia
  - Heart of Georgia-Altamaha RDC
- ▶ FS/HAAF JLUS Regional Coordinating Committee
  - Policy Committee – Elected Officials
  - Technical Committee – Staff and others
  - Development and business community
  - Conservation Organizations
  - Landowners
- ▶ Liberty Growth Management Partnership



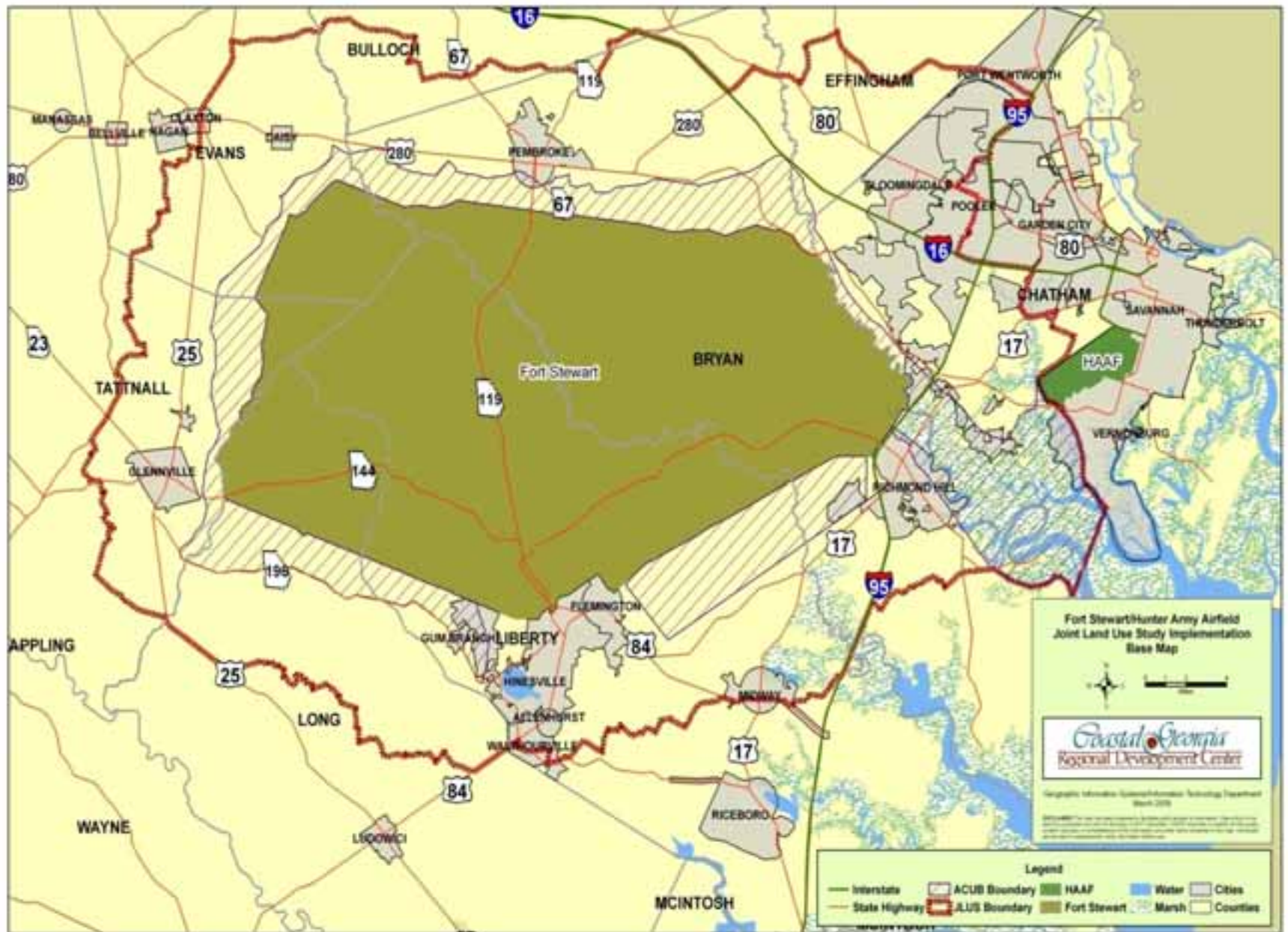
# Mapping for JLUS Implementation

- Acquired ArcGIS Server BuildOut Simulator™ and Data Viewer
  - RCC and JLUS partners access current information and data
  - Parcel based queries, data editing, geo-processing
  - Existing and future land use analysis
  - Display local data in an interactive map
    - ✓ Search and display features and attributes
    - ✓ Locate addresses
    - ✓ Identify features
    - ✓ Spatial analytics

*BuildOut  
Simulator  
™*







# GIS Datasets

- **ESRI**
  - Shuttle Radar Topography Mission (SRTM)
  - Water Resources
  - Transportation
- **State**
  - Boundaries
  - Conservation Areas
  - Transportation



- **County**
  - Parcel Data
  - Zoning
- **Local Governments**
  - City Level Land Use
  - Parcel Data
- **Regional Agencies**
  - City Boundaries
  - Land Use Data



- Federal

- Boundaries for Fort Stewart and HAAF

- Internal and External

- Internal Road System

- Noise Contours

- Airfields

- Small Arms

- Large Arms

- Accident Potential Zones for Airfields

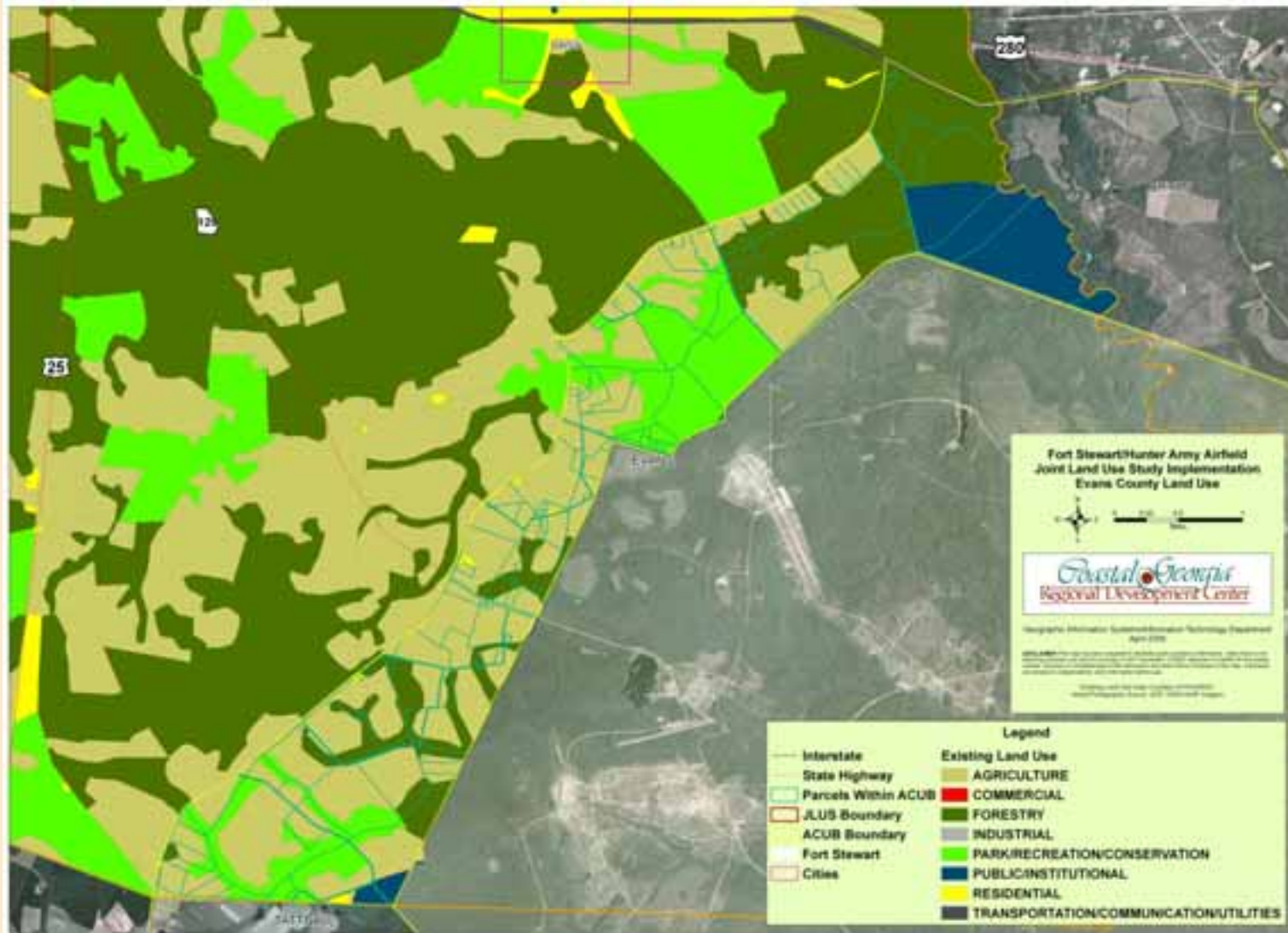
- Firing Range Locations

- Existing and Proposed

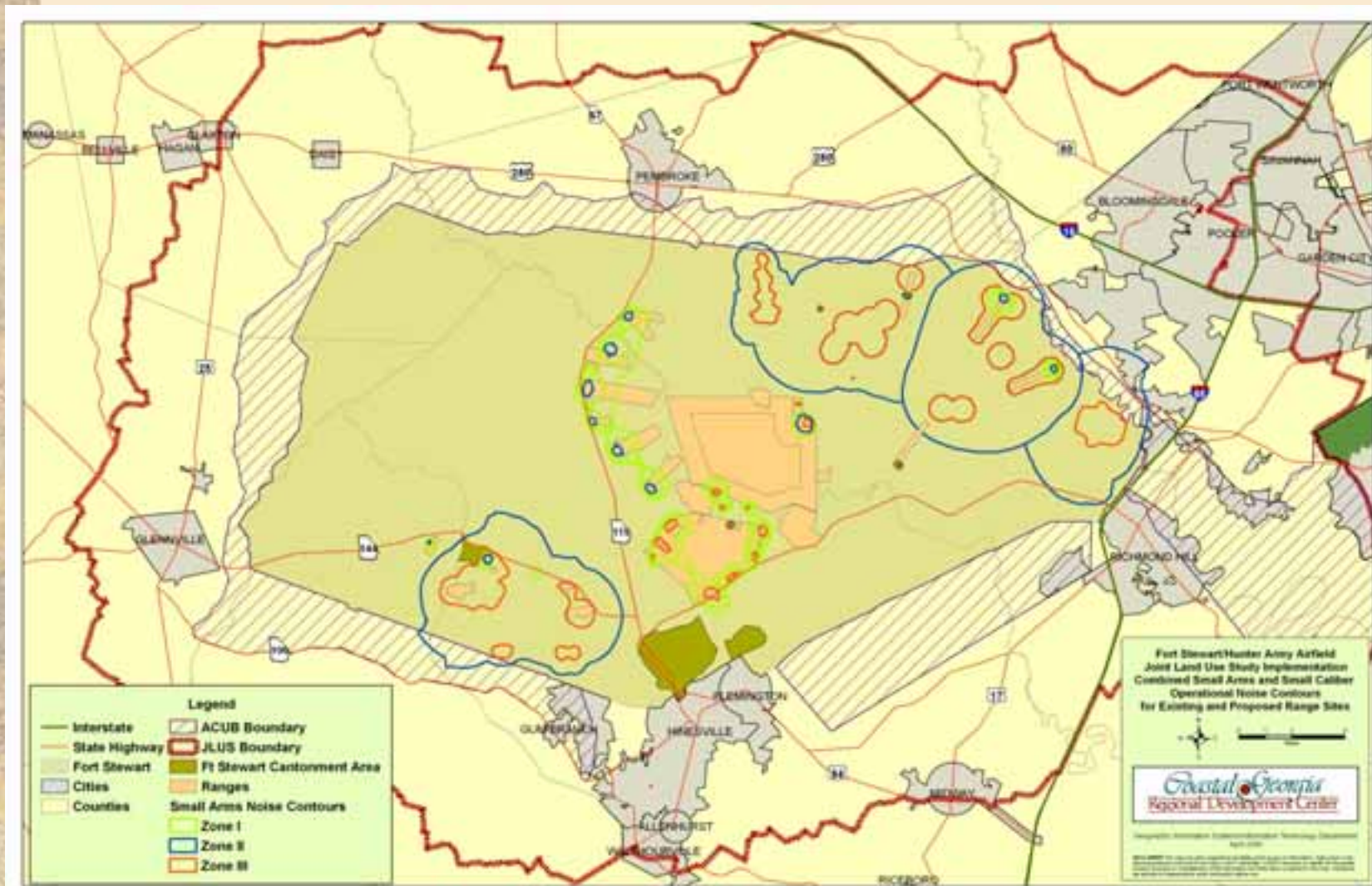
- Endangered Species Locations



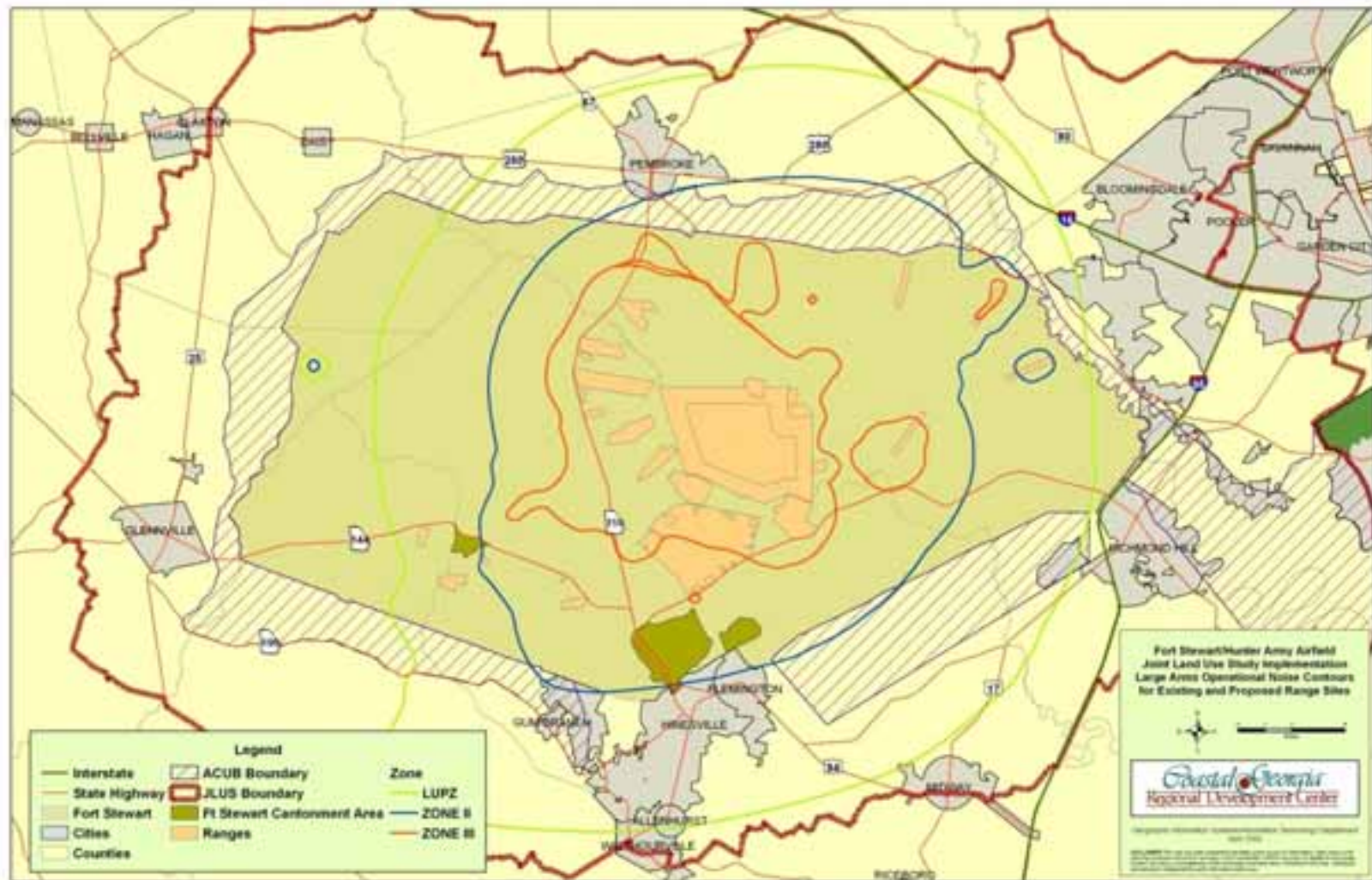
# Evans County Land Use



# Small Arms Noise Contours



# Large Arms Noise Contours







***Chris Chalmers, GISP***

***GIS/IT Director***

***ccchalmers@coastalgeorgiadc.org***

***David Dantzler***

***GIS Analyst***

***dwdantzler@coastalgeorgiadc.org***

***Coastal Georgia Regional Development  
Center***

