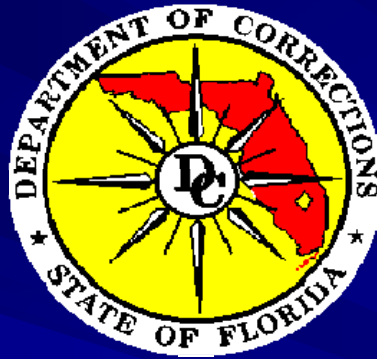


# OFFICE OF COMMUNITY CORRECTIONS



**Public Safety  
Operations & Planning**

**SERUG 2009**

*GI – Yes!*

*To*

*GI – What*

*Florida Department of Corrections  
Office of Community Corrections*



# The Walking Wheel

- Pre-GIS Solution
- Easy solution
- Quick solution
- Inexpensive solution
- Accurate solution??
- Other concerns...



## Attack Chickens



## Attack Geese



## Puddles



# FIND THE MONEY!



- US Department of Justice
- COPS Technology Grant
- \$1.9 million
- 3 year grant period

- Hardware
  - Desktops
  - Servers
- Software
  - Desktops
  - Servers
- Data
- Contracting
- Training/travel



# But Which Path To Take...

## GIS or GIS?



# “Global” Information System



# “Global” Information System

GIS  
GIS GIS GIS  
GIS GIS GIS  
GIS GIS GIS GIS  
GIS GIS  
GIS GIS  
GIS GIS GIS  
GIS GIS GIS  
GIS GIS  
GIS GIS GIS  
GIS

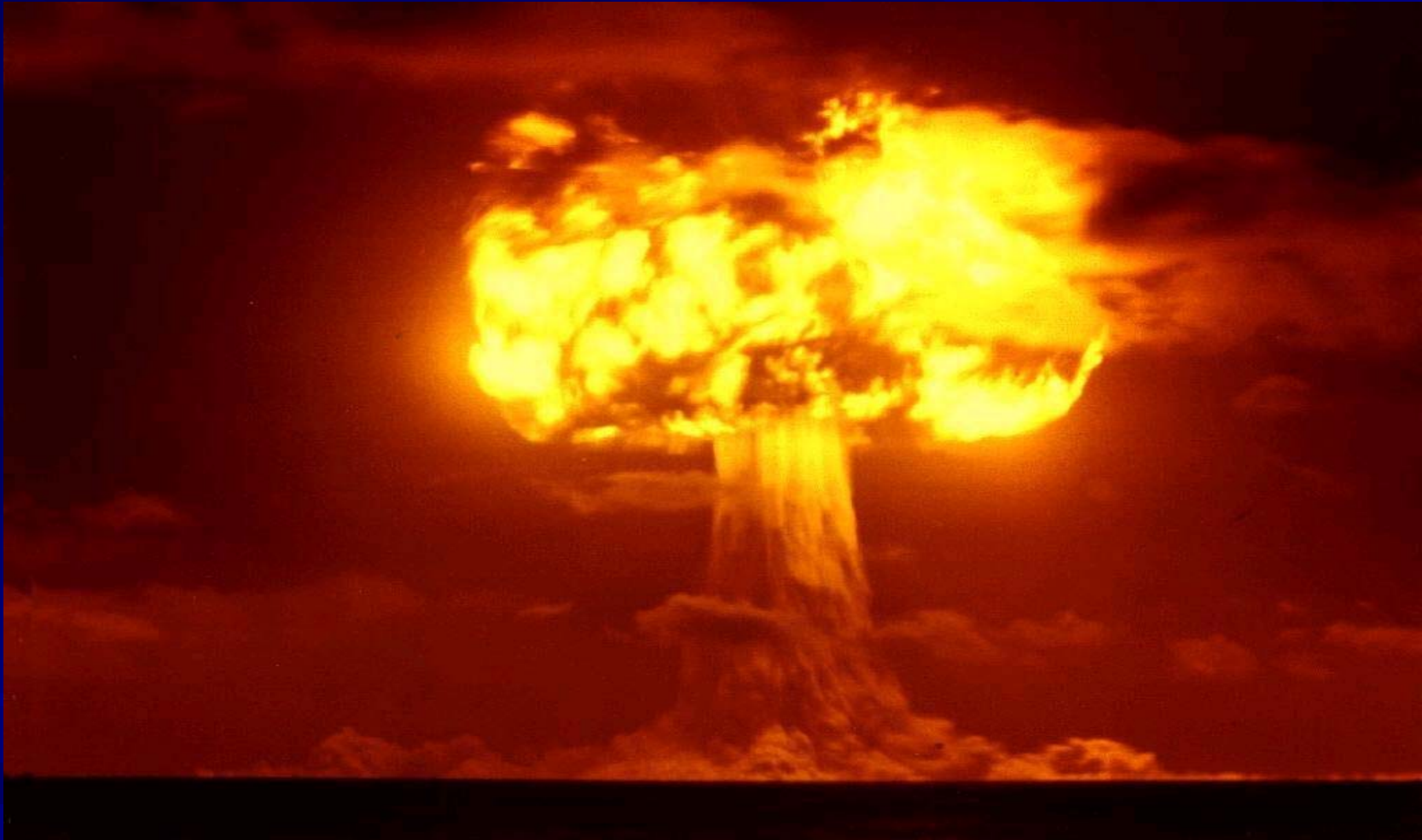


Solution





# Global Information Meltdown



*Florida Department of Corrections  
Office of Community Corrections*



**So its back to the decision point...**

**Want vs. Need**



# Enterprise Geographic Information System

- Has this ever been done before?
- How do we know what we need?
- Training, Training and a little more Training!
- Lots of questions
- Time to build



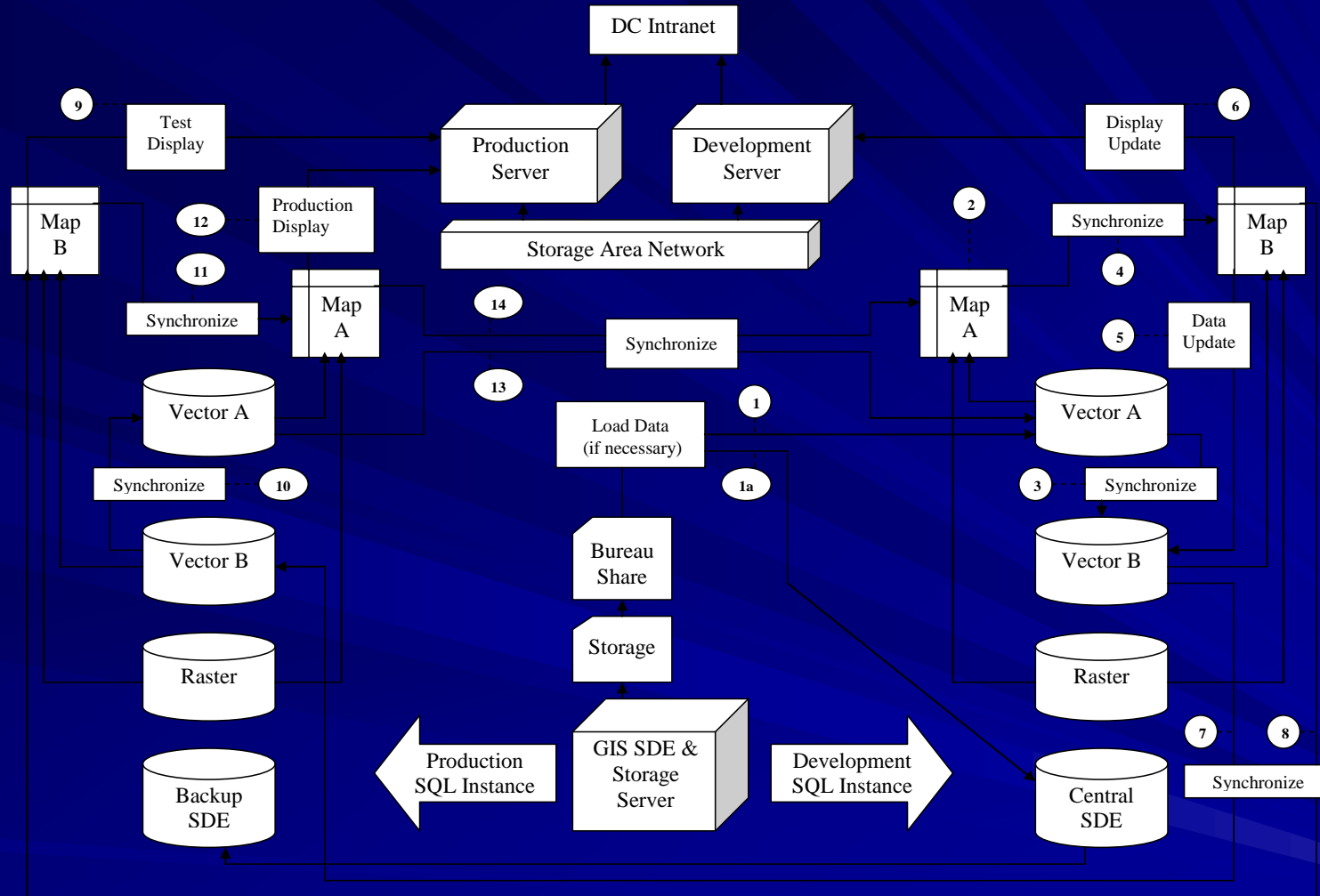
# Setting the Foundation

- Ability to find “any” address statewide
- Identify property boundary lines statewide
- Identify locations of restricted sites statewide
- Ability to measure distances between properties statewide
- Ability to locate “clear” areas (reverse engineer problem) statewide
- Data access/consistency statewide
- Available for use 24/7 statewide
- Recurring theme?

•**End User Needs** •Stability/Sustainability •Scalability



# Setting the Foundation

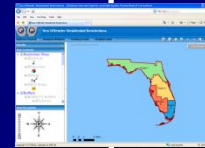


•End User Needs •**Stability/Sustainability** •Scalability

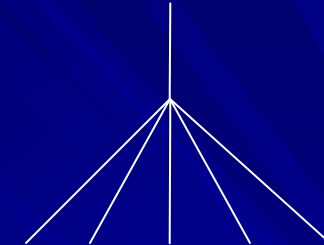


# Setting the Foundation

## 2 Necessary Components



Present:  
1 User  
Group



Future:  
Many User  
Groups

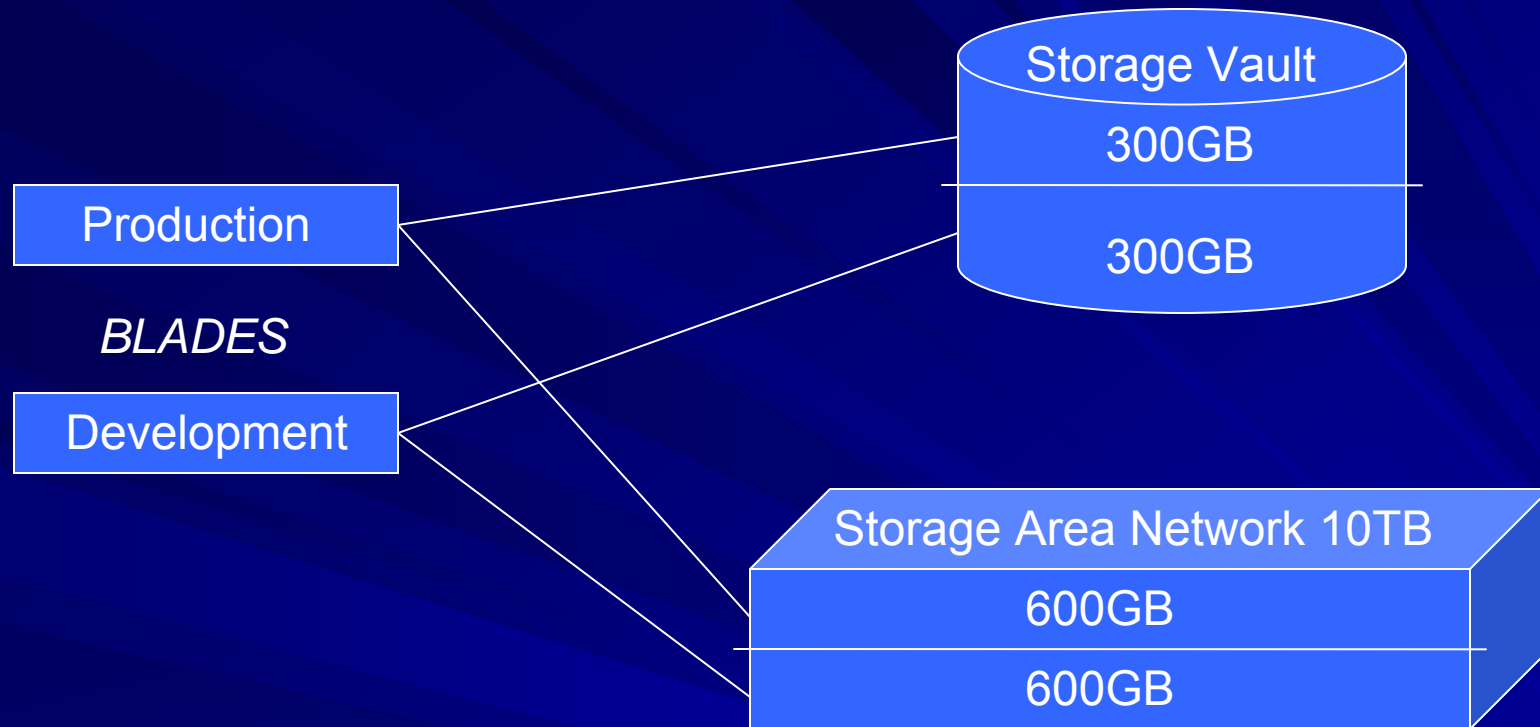
•End User Needs

•Stability/Sustainability

•**Scalability**



# Building "IT"



• **Hardware**

• **Capacity/configuration**

• **Software**

• **Functionality**

• **Data**

• **Acquisition**

• **End User Needs**

• **Stability/Sustainability**

• **Scalability**



# Building "IT"

**ArcInfo**

Microsoft®  
Visual Web Developer  
Express Edition

**ArcGIS Server SDK**

**ArcGIS Server**

**ArcGIS Server Manager**

Microsoft®  
**SQL Server® 2005**

- Hardware
- Capacity/configuration

- Software**
- Functionality**

- Data
- Acquisition

•End User Needs

•Stability/Sustainability

•Scalability

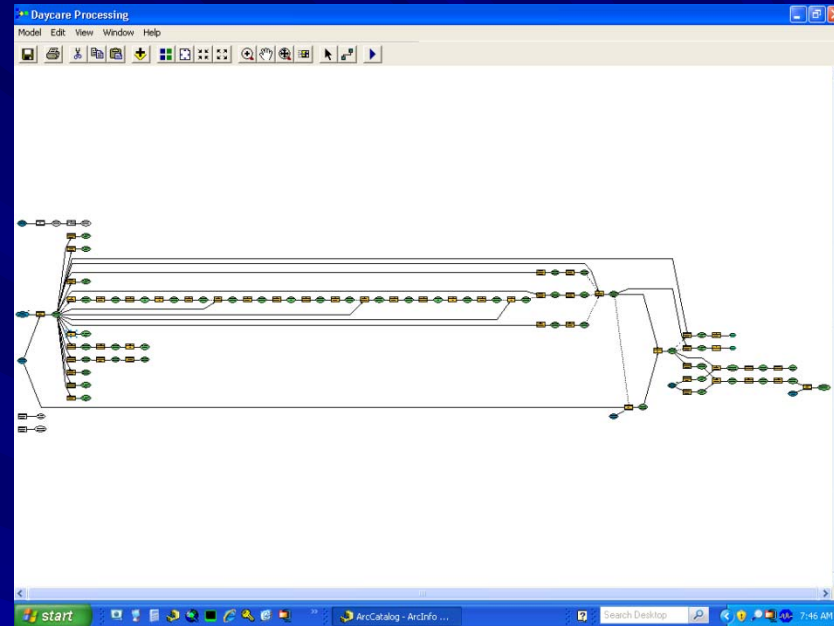
*Florida Department of Corrections  
Office of Community Corrections*





# Building "IT"

- What do we need?
- Where do we get it?
- How do we get it?
- When do we get it?
- What do we do with it?



- Hardware
  - Capacity/configuration

- Software
  - Functionality

- Data
  - Acquisition

•End User Needs

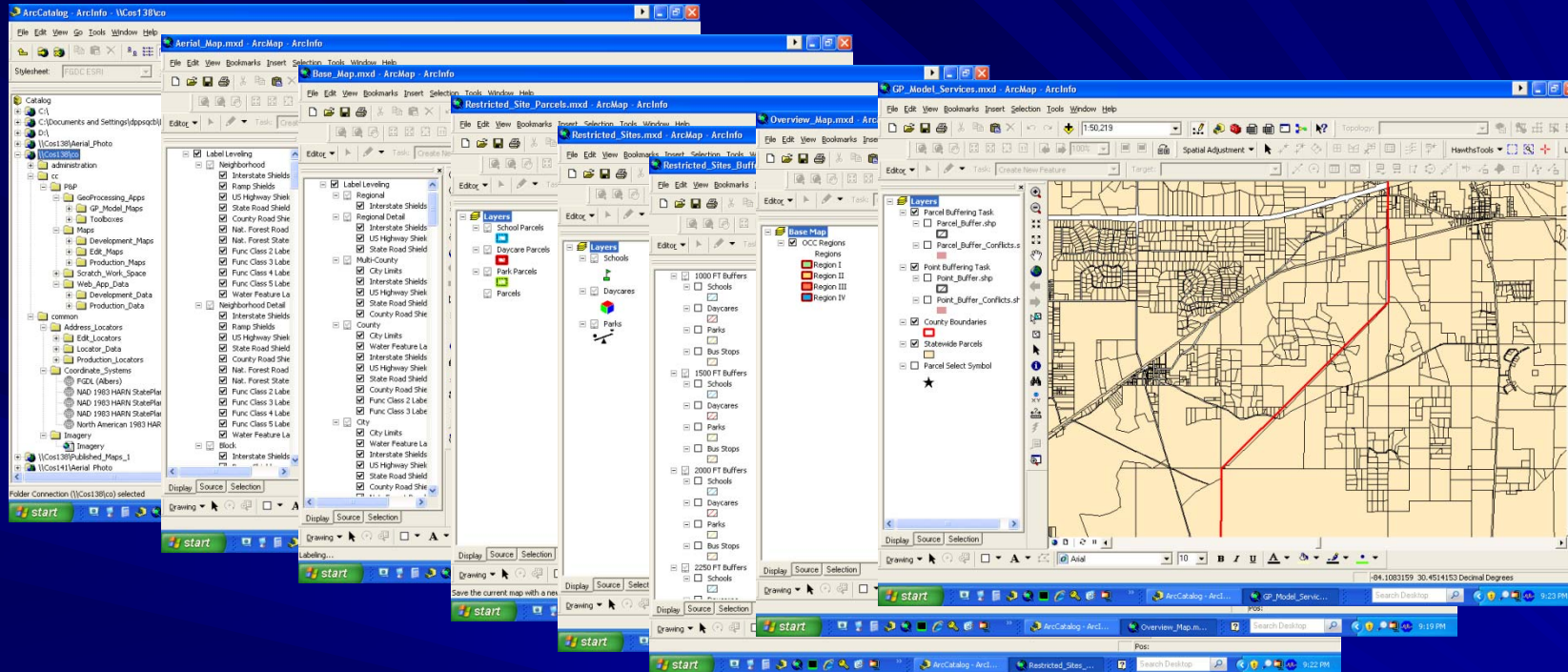
•Stability/Sustainability

•Scalability

*Florida Department of Corrections  
Office of Community Corrections*



# Programming "IT"



•ArcGIS

•.NET

•Hardware

•Software

•Data

•Capacity/configuration

•Functionality

•Acquisition

•End User Needs

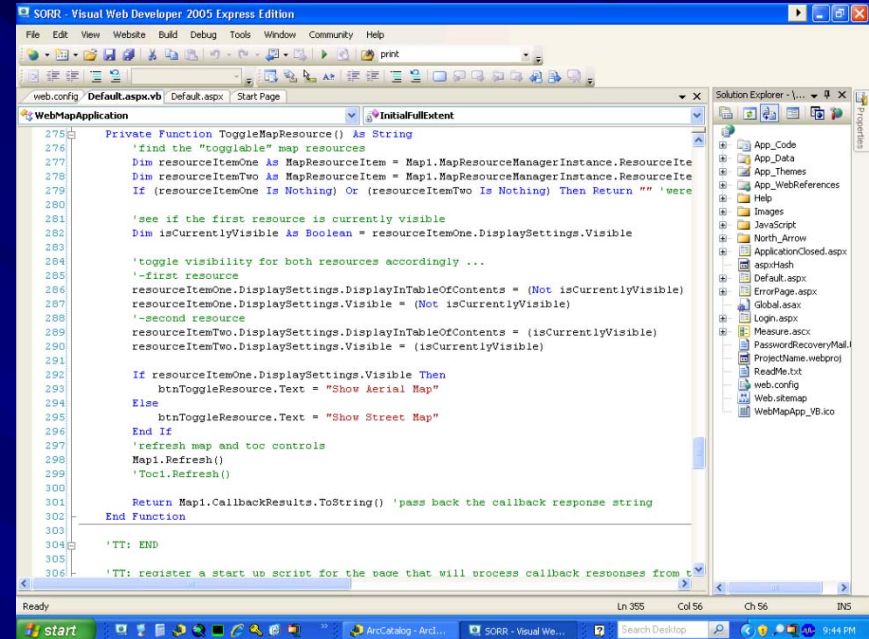
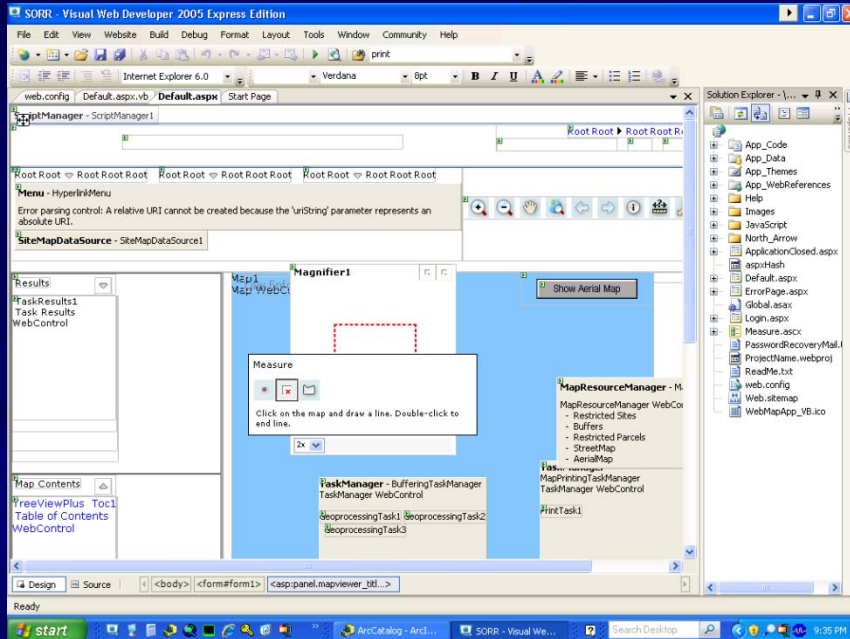
•Stability/Sustainability

•Scalability

*Florida Department of Corrections  
Office of Community Corrections*



# Programming "IT"



•ArcGIS

•.NET

•Hardware

•Software

•Data

•Capacity/configuration

•Functionality

•Acquisition

•End User Needs

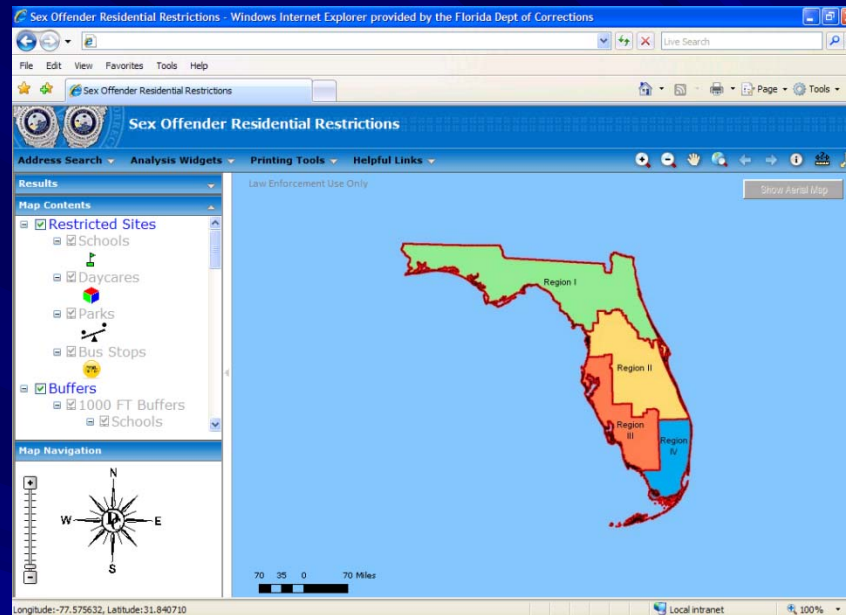
•Stability/Sustainability

•Scalability

Florida Department of Corrections  
Office of Community Corrections



# We can do "IT" and GIS!



## SUCCESS

- ArcGIS
- .NET
- Hardware
- Software
- Data
- Capacity/configuration
- Functionality
- Acquisition
- End User Needs
- Stability/Sustainability
- Scalability

*Florida Department of Corrections  
Office of Community Corrections*



Sex Offender Residential Restrictions - Windows Internet Explorer provided by the Florida Dept of Corrections

File Edit View Favorites Tools Help

Sex Offender Residential Restrictions

## Sex Offender Residential Restrictions

Address Search Analysis Widgets Printing Tools Helpful Links

Results

Map Contents

- Restricted Sites
  - Schools
  - Daycares
  - Parks
  - Bus Stops
- Buffers
  - 1000 FT Buffers
    - Schools

Map Navigation

Law Enforcement Use Only

Show Aerial Map

70 35 0 70 Miles

Longitude: -77.575632, Latitude: 31.840710

Local intranet 100%

*Florida Department of Corrections  
Office of Community Corrections*



Sex Offender Residential Restrictions - Windows Internet Explorer provided by the Florida Dept of Corrections

File Edit View Favorites Tools Help

Sex Offender Residential Restrictions

Address Search Analysis Widgets Printing Tools Helpful Links

Results

- 225 e coastline, 32202 (1)
  - Legend
  - Features
    - 225 E COASTLINE, 32202

Map Contents

- Restricted Sites
  - Schools
  - Daycares

Map Navigation

Longitude: -86.011639, Latitude: 22.922963

Local intranet 100%

Law Enforcement Use Only

Primary Address Search

Address: 225 e coastline

Zipcode: 32202

Start Search

Show Aerial Map

70 35 0 70 Miles

**Florida Department of Corrections**  
**Office of Community Corrections**



Sex Offender Residential Restrictions - Windows Internet Explorer provided by the Florida Dept of Corrections

File Edit View Favorites Tools Help

Sex Offender Residential Restrictions

## Sex Offender Residential Restrictions

Address Search Analysis Widgets Printing Tools Helpful Links

**Results**

- 225 e coastline, 32202 (1)
  - Legend
  - Features
    - 225 E COASTLINE, 32202

**Map Contents**

- Restricted Sites
  - Schools
  - Daycares

**Map Navigation**

Longitude: -81.656171, Latitude: 30.321693

Local intranet 100%

*Florida Department of Corrections  
Office of Community Corrections*



Sex Offender Residential Restrictions - Windows Internet Explorer provided by the Florida Dept of Corrections

File Edit View Favorites Tools Help

Sex Offender Residential Restrictions

Address Search Analysis Widgets Printing Tools Helpful Links

Results

- 225 e coastline, 32202 (1)
  - Legend
  - Features
    - 225 E COASTLINE, 32202

Map Contents

- Restricted Sites
  - Schools
  - Daycares

Map Navigation

Longitude: -81.651876, Latitude: 30.321723

Local intranet 100%

**Florida Department of Corrections**  
**Office of Community Corrections**





Sex Offender Residential Restrictions - Windows Internet Explorer provided by the Florida Dept of Corrections

File Edit View Favorites Tools Help

Sex Offender Residential Restrictions

Address Search Analysis Widgets Printing Tools Helpful Links

Results

225 e co

Legend

Feature

225

Map Contents

Restrict

Sc

Da

Map Navigation

N

W

E

S

180 90 180 Feet

Longitude: -81.653795, Latitude: 30.321742

Local intranet

100%

Parcel Buffering Tool

Select Parcel

Feature 1

1 feature(s) entered

Buffer Distance 2500 Feet

Submit

Map

Map navigation controls: zoom in, zoom out, pan, home, search, info, print, full screen.

Map labels: E FORSYTH, S NEWNAN ST, S MARKET ST, S LIBERTY ST, E COAST LINE DR, COURT HOUSE DR, N MA, E ARMS, DENT DR, ALSOP JR BRG.

Map features: A red flag icon and a black star icon are placed on a parcel.

**Florida Department of Corrections**  
**Office of Community Corrections**



Sex Offender Residential Restrictions - Windows Internet Explorer provided by the Florida Dept of Corrections

File Edit View Favorites Tools Help

Sex Offender Residential Restrictions

Address Search Analysis Widgets Printing Tools Helpful Links

**Results**  
[Clear All](#)  
 Parcel Buffering Tool Results  
 225 e coastline, 32202 (1)  
 Legend  
 Features  
 225 E COASTLINE, 32202

**Map Contents**  
 Restricted Sites  
 Schools  
 Daycares

**Map Navigation**

Longitude: -81.657778, Latitude: 30.322379

Local intranet 100%

**Florida Department of Corrections**  
**Office of Community Corrections**



Sex Offender Residential Restrictions - Windows Internet Explorer provided by the Florida Dept of Corrections

File Edit View Favorites Tools Help

Sex Offender Residential Restrictions

### Sex Offender Residential Restrictions

Address Search Analysis Widgets Printing Tools Helpful Links

Results

Map Contents

- Buffers
  - 1000 FT Buffers
    - Schools
    - Daycares
    - Parks
    - Bus Stops
  - 1500 FT Buffers
    - Schools
    - Daycares

Map Navigation

Longitude: -81.625077, Latitude: 30.291325

Local intranet 100%

*Florida Department of Corrections  
Office of Community Corrections*



Sex Offender Residential Restrictions - Windows Internet Explorer provided by the Florida Dept of Corrections

File Edit View Favorites Tools Help

Sex Offender Residential Restrictions

## Sex Offender Residential Restrictions

Address Search Analysis Widgets Printing Tools Helpful Links

Results

Map Contents

- Bus Stops
- 2500 FT Buffers
  - Schools
  - Daycares
  - Parks
  - Bus Stops
- 3000 FT Buffers
  - Schools

Map Navigation

0.3 0.6 Miles

Show Aerial Map

Done, but with errors on page. Local intranet 100%

**Florida Department of Corrections**  
**Office of Community Corrections**



# Credits

- ESRI
  - Caroline Stahlschmidt
  - Michele Lundeen
  - Robyn Peverill
  - Instructors
  - Tech Support
- FSU/FREAC
  - Stephen Hodge
  - Dean Jue
  - Beverly Renard
  - Georgianna Strode
- MapWise
  - Brian May
- FL Department of Revenue
  - Kevin Gorham
- FL Senate – Reapportionment
  - Linc Clay
- American Digital Cartography, Inc.
- NAVTEQ
- Seven Hills Regional User Group
- Tallahassee-Leon County GIS
- FL Department of Children & Families
- FL Department of Education
- FL Department of Environmental Protection
- Software Solutions, Inc.



# Questions or Comments...

---

Keith Sandell, MBA  
Correctional Services Assistant Consultant

Florida Department of Corrections  
Office of Community Corrections  
Bureau of Probation and Parole Field Services  
2601 Blair Stone Road, AG-10  
Tallahassee, Florida 32399

(850) 410-3045  
[sandell.keith@mail.dc.state.fl.us](mailto:sandell.keith@mail.dc.state.fl.us)

*Florida Department of Corrections*  
*Office of Community Corrections*

