

GIS Fire Mobile Solution (GFMS)

Kevin Stewart

***On behalf of Bruce Bishop
City of Marietta, GA***

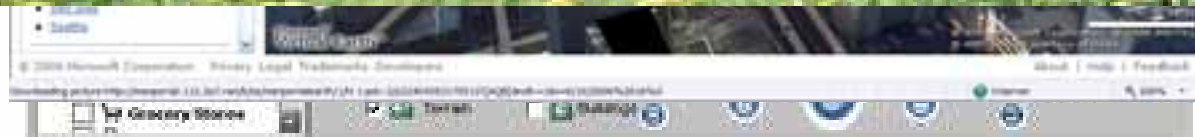
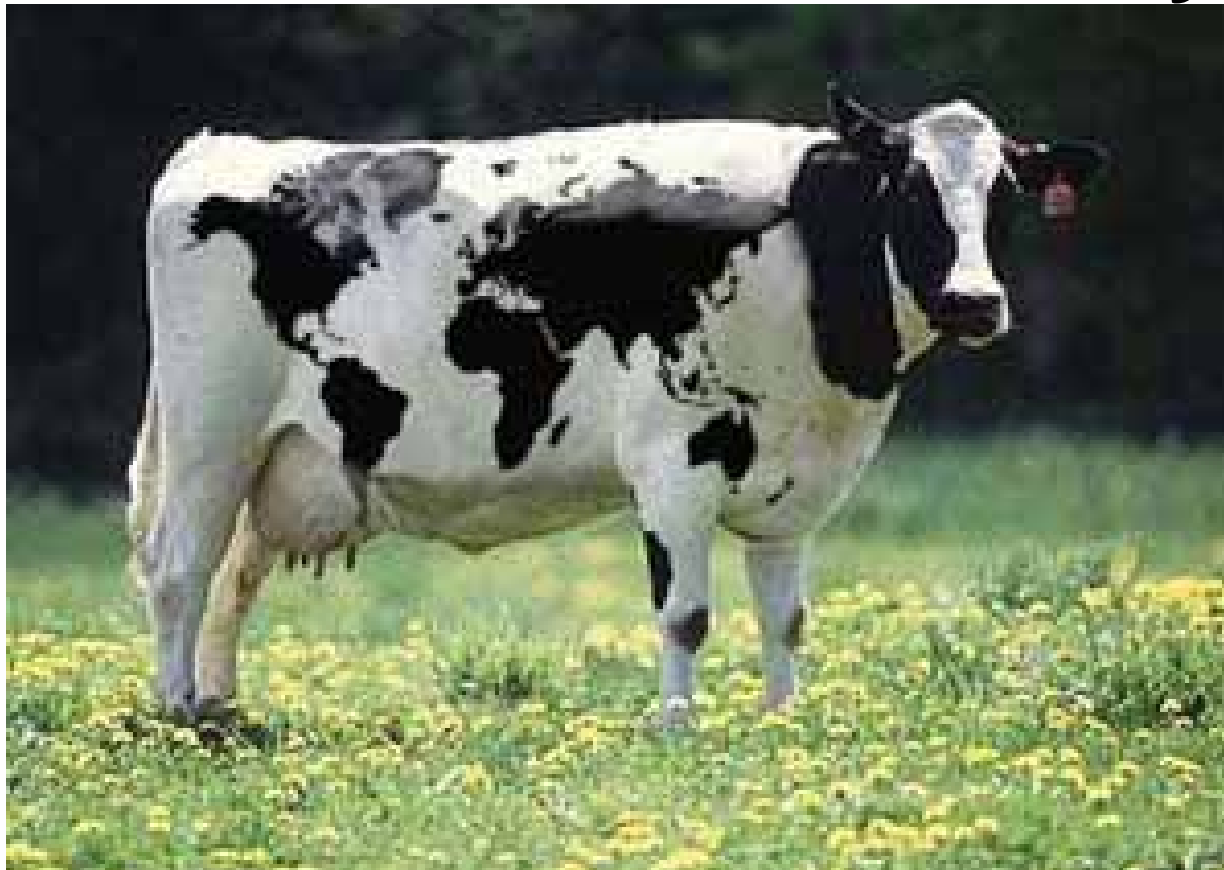
SERUG – Jacksonville, FL

April 28th, 2009



GIS is...

...everywhere!



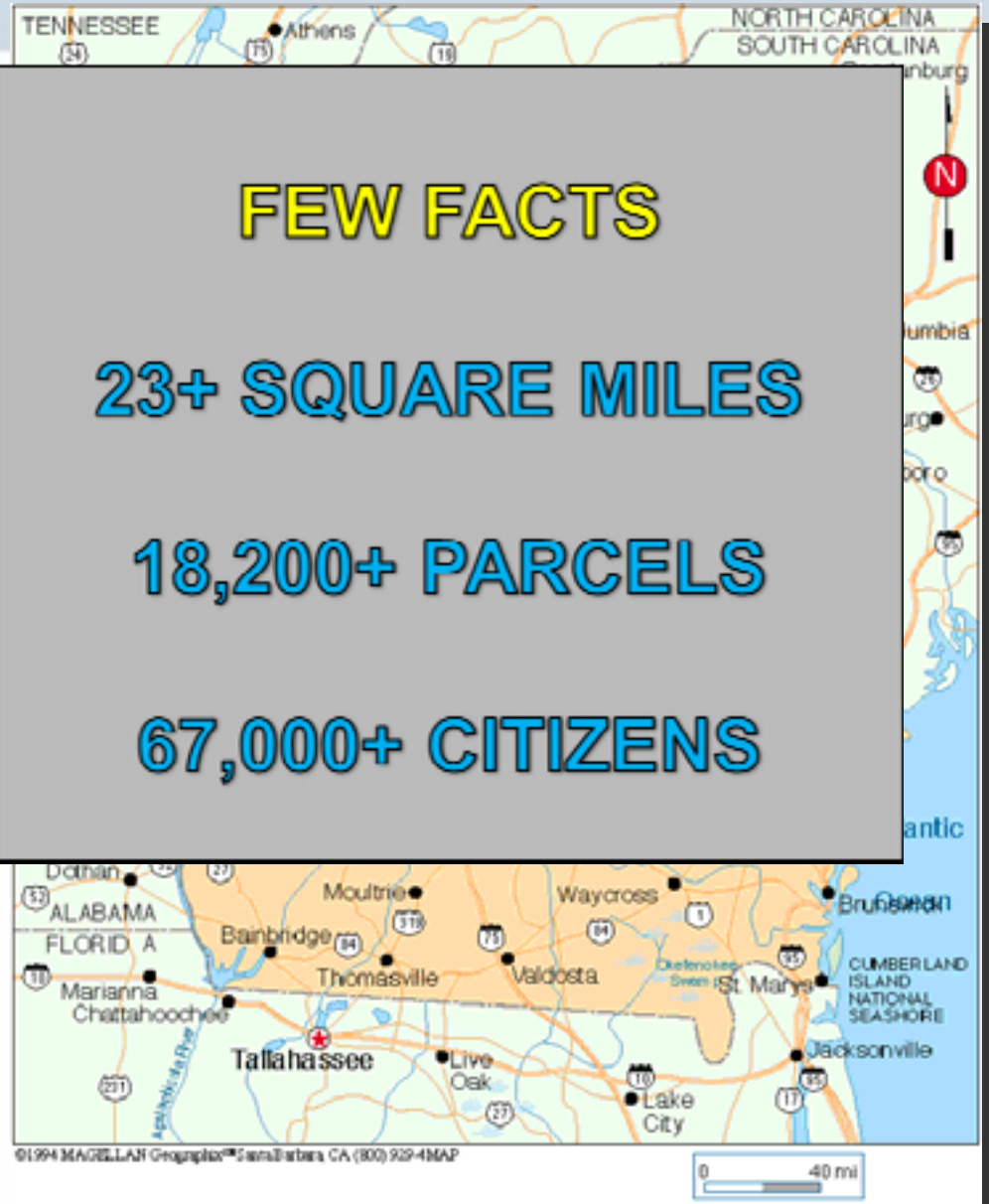


Agenda

- Introduction
 - Problem
 - Solution
 - Benefits



Introduction – Site & Situation





- Award Winning City



**Special Achievement in GIS
(SAG) Award - 2005**



**Runner-Up Best
Government Website - 2007**



City of Excellence Award - 2002



Trendsetter Award - 2005



**International Association of Chiefs
of Police/iXP (IACP/iXP) Award - 2004**



All-America City Award - 2006



City's GIS Overview

- Bruce Bishop, GISP – GIS/Web Services Manager
 - GIS Staff and GIS Users
- ESRI Centric for over 16 years
- Multi-Departments
- 2001: Transitioned from Coverage/SHP to SDE/GDB
- 2005: Moved to ArcGIS Server
- 2006: Deployed first ArcGIS Server App – Public Map Viewer
- 2008: Participate in ESRI SGELA





How We Got Here

- Needs Assessment / Implementation Plan
 - Fire Department and GIS
 - July 2008
- Best of Breed Scope for GIS Fire Mobile Solution (GFMS)





Problem

- No field access to digital information
 - GIS Data
 - Preplans
 - Routing



Goal – GIS Fire Mobile Solution (GFMS)

- Get up to date, accurate GIS data into the trucks (identified during needs assessment)
 - Fat finger application
 - Foundation for Preplans
 - Leverage City's existing GIS and Fire Truck infrastructure (hardware/software)



Solution – Technical Requirements

- Hardware / Network
 - Servers that can accommodate ArcGIS Server (Advanced Enterprise)
 - Laptops in trucks
 - ROCKET System (seeks fastest WiFi connection)
- Software
 - ArcGIS Server Advanced Enterprise
 - ArcGIS Server Network Analyst
- Data
 - GIS (basemap and routable streets)
 - Preplan docs





Solution – GIS Fire Mobile Solution (GFMS)

- Geocode Search (Address, Intersection)
- Identify
- Standard Map Navigation
- Synchronization
- GPS





Solution – GIS Fire Mobile Solution (GFMS)

- Routing – AGS Network Analyst service
 - Origin to Destination
 - Multiple Destinations





Solution

- GIS Fire Mobile Solution (GFMS)
 - Preplan Tool
 - Multi View Services
 - Google Maps Street View
 - Microsoft Virtual Earth Birdseye





GFMS Benefits (Expected)

- ✓ Get up to date, accurate GIS data into trucks
- ✓ Fat finger application (easy to use)
- ✓ Build foundation to support Preplans
- ✓ Build foundation to extend Fire and EMS mobile capabilities – EOC
- ✓ Facilitate application functionality reuse across other departments.



Acknowledgements

- City of Marietta GIS Department
 - Bruce Bishop
 - (770) 794-5551
 - bbishop@mariettaga.gov
 - Geographic Information Services, Inc.
 - Kevin Stewart
 - Booth 218
 - (205) 941-0442 ext.35
 - kstewart@gis-services.com

