

Moving Forward from CAD to GIS with Utility Data

Daniel Johns
cadmoogle@giscorner.com

Agenda

- Introduction
- Data Organization
- Broken Lines
- Setting the Standard
- CAD and GIS...BFF
- Demo
- Conclusion
- Questions/Discussion

Introduction

After attending SERUG for the first time last year, many of the people I spoke with all had the same issue. They all said, "We're working with CAD data and have no idea how to move forward into GIS." The idea behind my abstract is to show users that it's not difficult to move forward into GIS.

Data Organization

- Data organization is ideal for any project, especially when migrating over to ArcGIS
- 'Sloppy' CAD data = Nothing but trouble

Consequences of SLOPPY Data

- Unexpected workflows
- No organization
- Tougher transition to GIS

Examples of SLOPPY Data

- Broken lines and gaps
- Exploded objects
- No set layer standards
- No set block standards
- Massive file sizes

Data Organization

Ways to clean up the mess:

- Use WIPEOUTS instead of breaking lines
- Keep all objects intact (NO GAPS!)
- Use standard blocks and layers in all drawings
- Create a protocol (workflow)
- Clean up existing drawings (if needed)

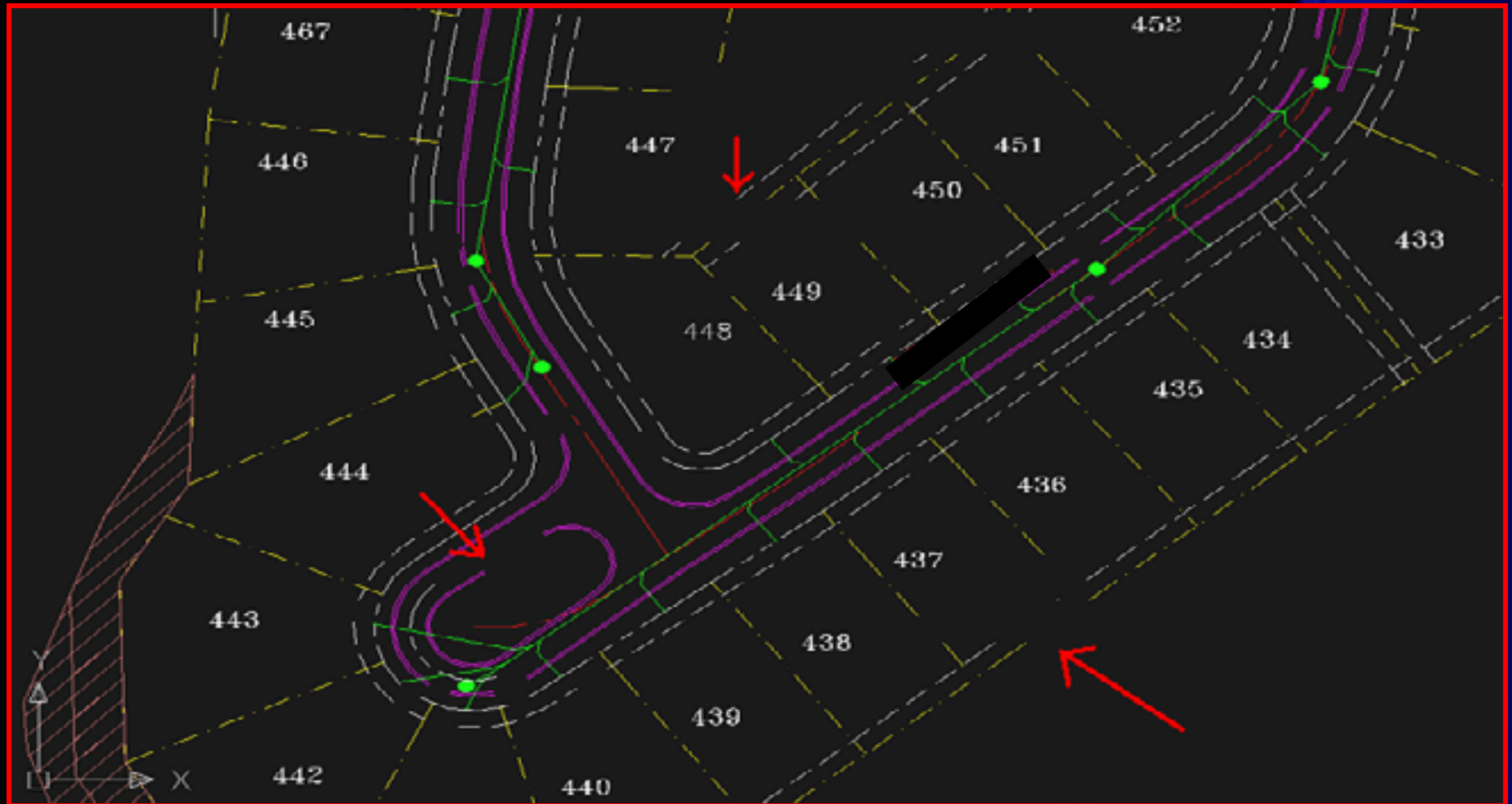
Broken Lines

Typical CAD drawing



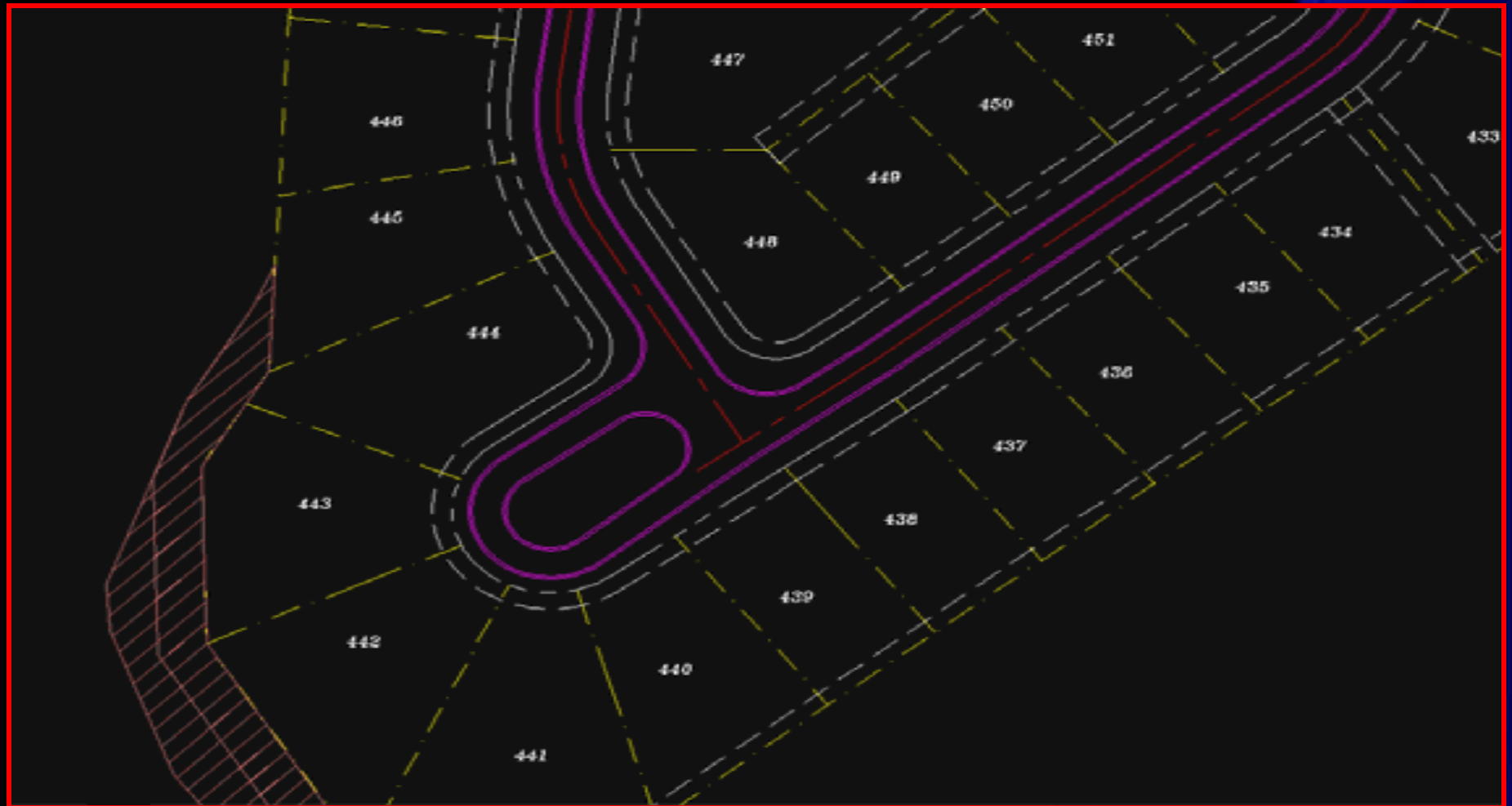
Broken Lines

When layers are turned off...GAPS!



Broken Lines

How the drawing should look



Setting the Standard

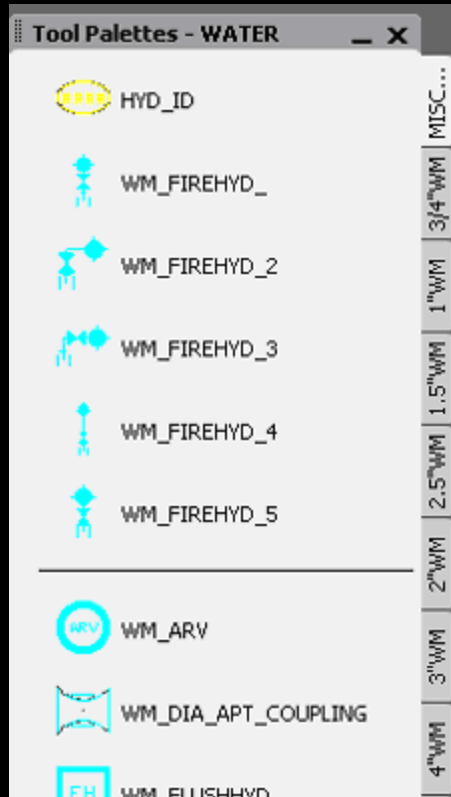
Organize, organize and... organize!

- Delegate job responsibilities
- Decide if your CAD data will be maintained
- Structure an overall workflow
- Decide what needs to be in the GIS
- Design and implement a personal / workgroup or enterprise level geodatabase

CAD and GIS ...BFF

Starting with CAD (AutoCAD)

Create a tool palette with standard blocks

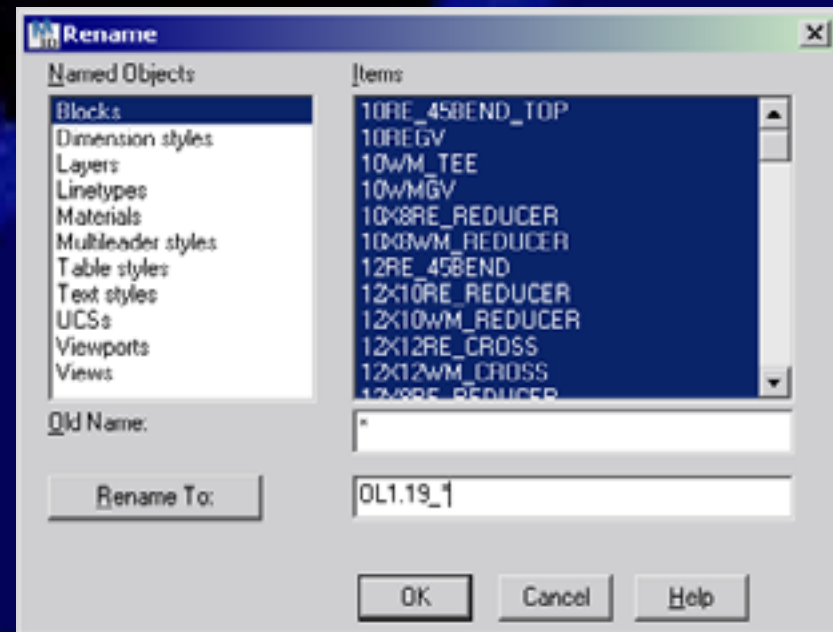
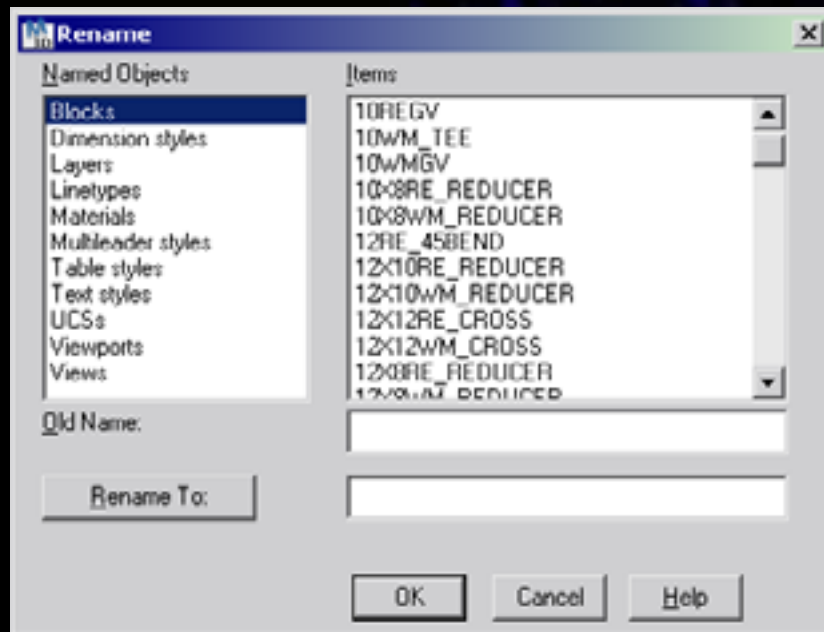


- Assign the base point when creating blocks
- Use the same naming style throughout the system (I.E, 8WMMGV, 8FMMGV, etc.)

CAD and GIS ...BFF

CAD (AutoCAD)

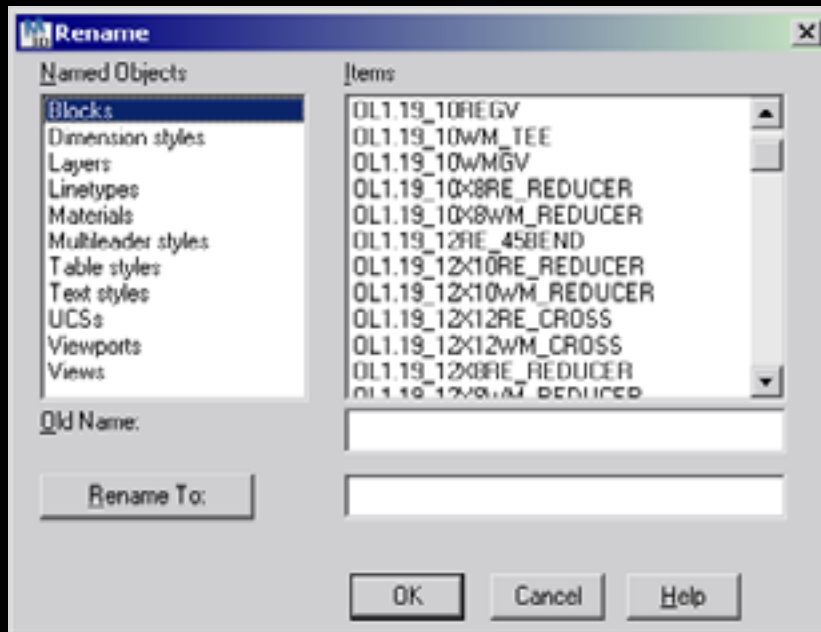
Use the rename command to make objects unique



CAD and GIS ...BFF

CAD (AutoCAD)

=



Now the block(s)
name will reflect
the as-built it
exist on.

Demo



Conclusion

1. Clean data is good data
2. No one and I mean no one knows your data as good as you!
3. Patience is golden; Empires are not built overnight
4. Organize, organize, and did I say organize?
5. Use the power of 'ESRI's ArcMap Model Builder' to automate / script your work

Contact Information

Daniel Johns

cadmoogle@giscorner.com

www.giscorner.com

Connecting CAD and GIS users.

Thank you for your time. This time is allotted for questions and discussion.