



# ArcGIS Explorer

## Going Beyond the Basics

*Jonathan Fisk*  
*Steve Mulberry*



# Presentation Highlights

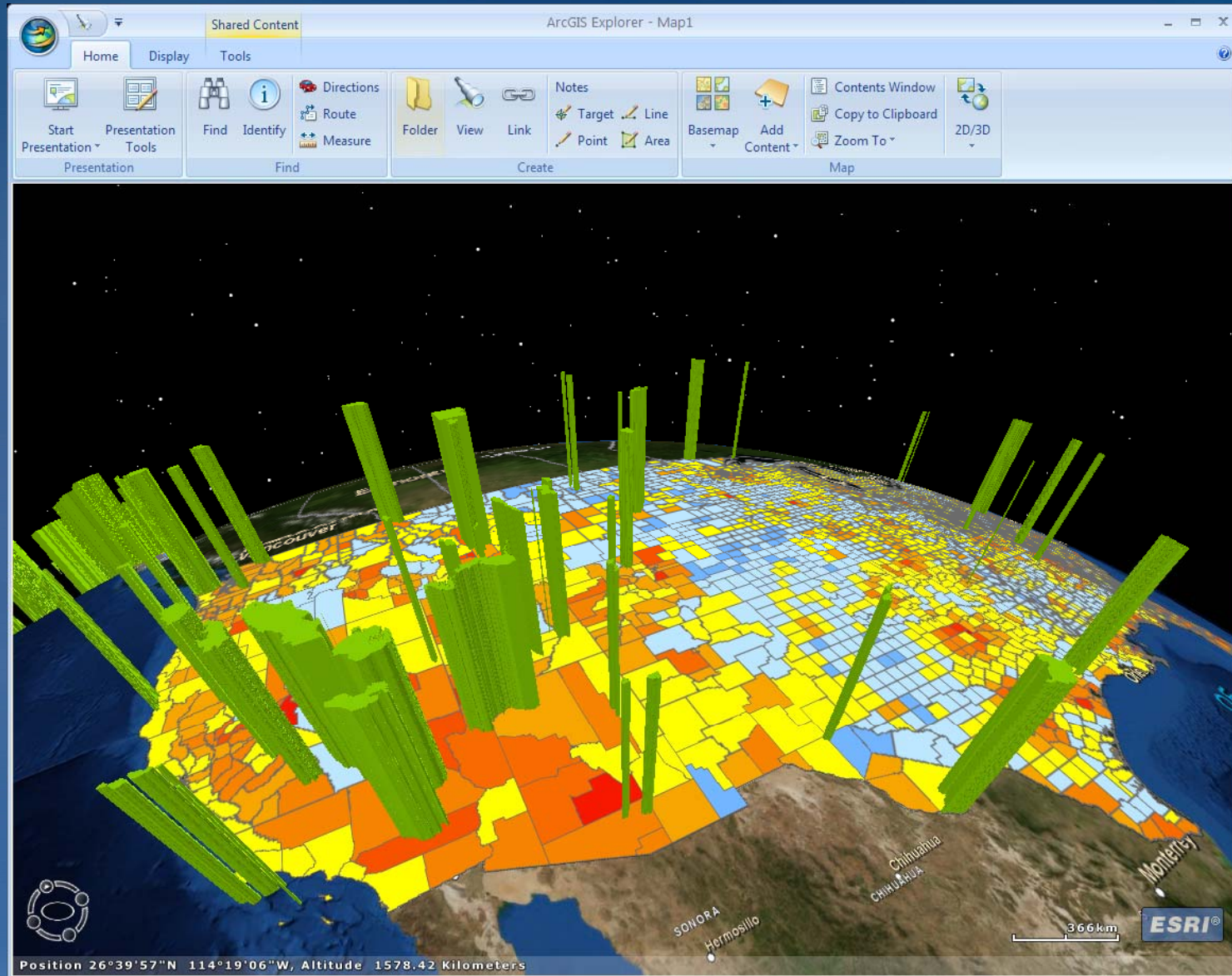
- **Introductions & Audience Vision for Explorer**
- **The Basics of Explorer – NMF (a demo)**
- **Resource Center as a model (a demo)**
- **The Best of ArcGIS Explorer –GeoProcessing! (a demo)**
- **Preview of ArcGIS 900**

# Themes for ArcGIS Explorer Build 900

- **New user experience**
  - Fully modernized, easy & intuitive
  - Integrated 2D/3D display
- **Enhanced presentation capabilities**
  - An ideal way to communicate geographically
- **Easier customization (application configuration)**
  - Easy to tailor for specific audiences or uses
  - Easy to administer
- **Better integration**
  - ArcGIS Online
  - Layer packages

# Ribbon-based User Interface

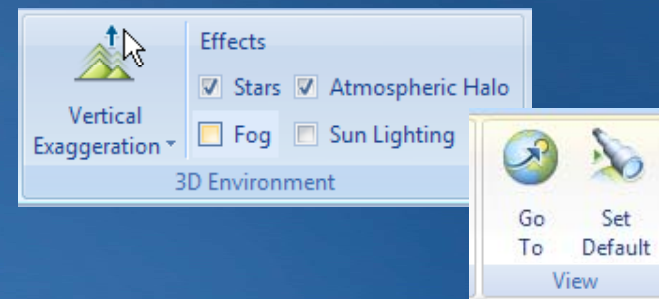
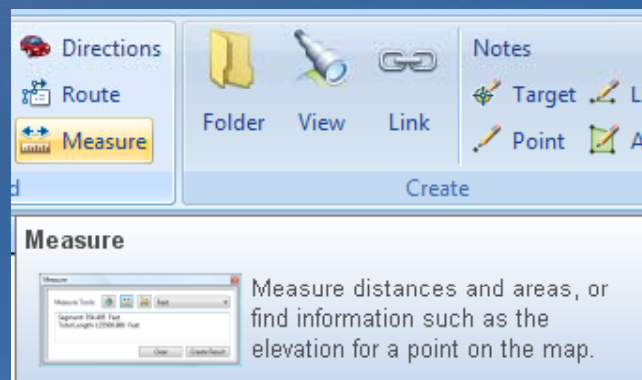
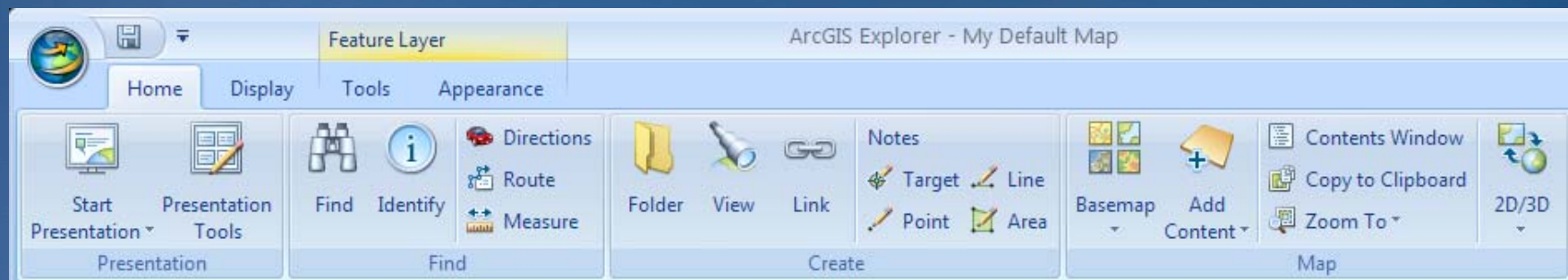
*Easy to use, intuitive, and powerful*



# Ribbon-based User Interface

*Easy to use, intuitive, and powerful*

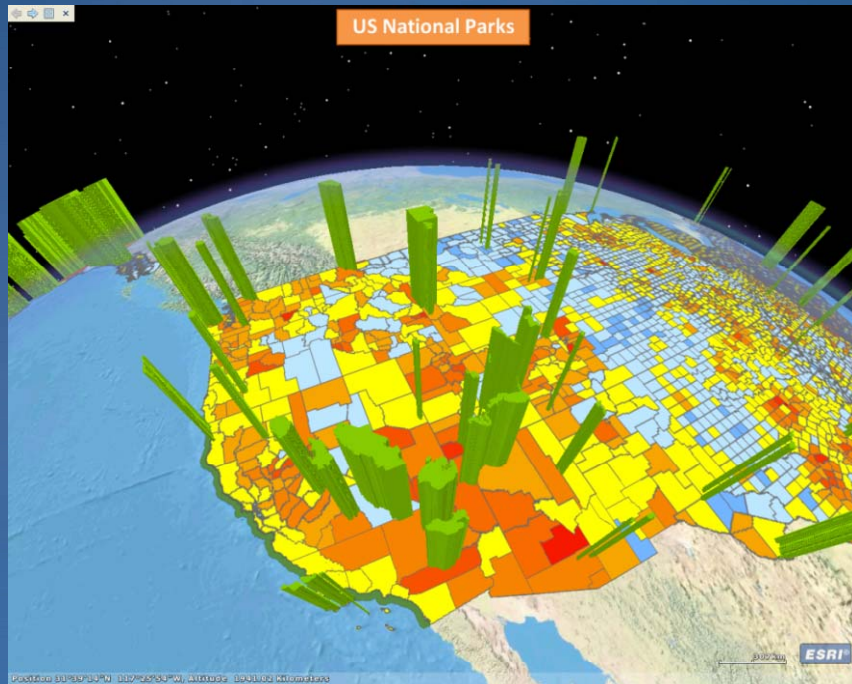
- Tools are presented in the context of what you are working with
- Integrated tool tips



# Presentations

## *Communicate Geographically*

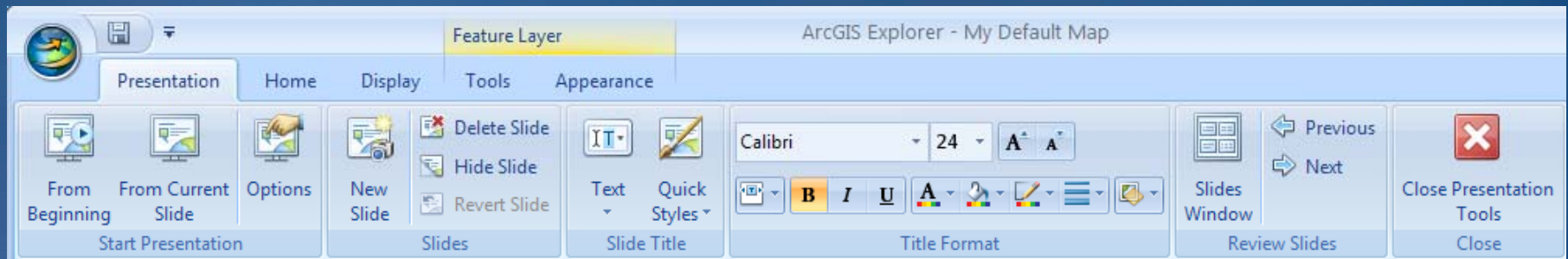
- Include layers, popups, overlays, titles
- Easy to share with others
- Full-screen display



# Presentations

## *Communicate Geographically*

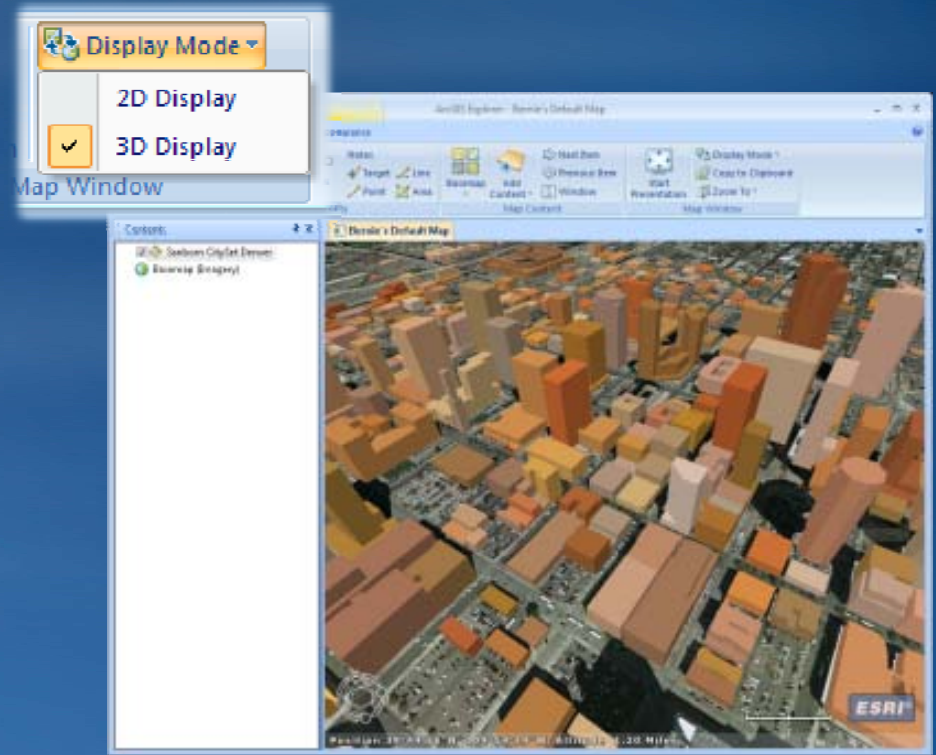
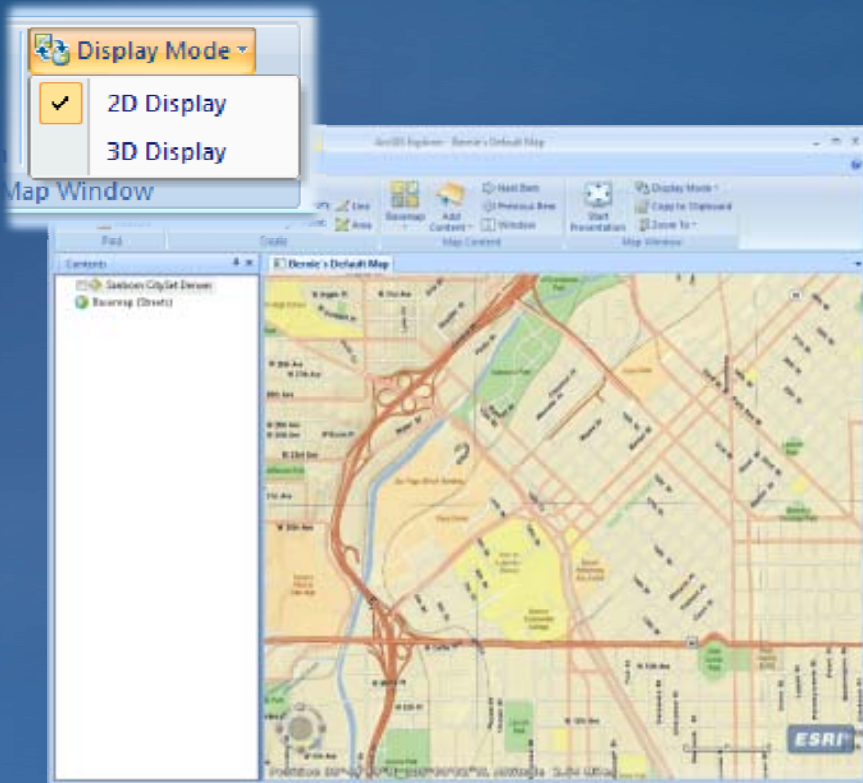
- Include layers, popups, overlays, titles
- Easy to share with others



# Integrated 2D/3D Display

*Complete control over your visualization experience*

- Toggle on-the-fly
- Maps can be locked to one mode or the other





# ArcGIS Online

## *Ready-to-use basemaps and layers for ArcGIS Explorer*

- ArcGIS Online updates
- ArcGIS Online premium services
- Virtual Earth services (imagery, hybrid, streets)
  - No charge if using ArcGIS Desktop
  - Subscription-based for standalone ArcGIS Explorer users
  - Enterprise licensing available

### Microsoft Virtual Earth



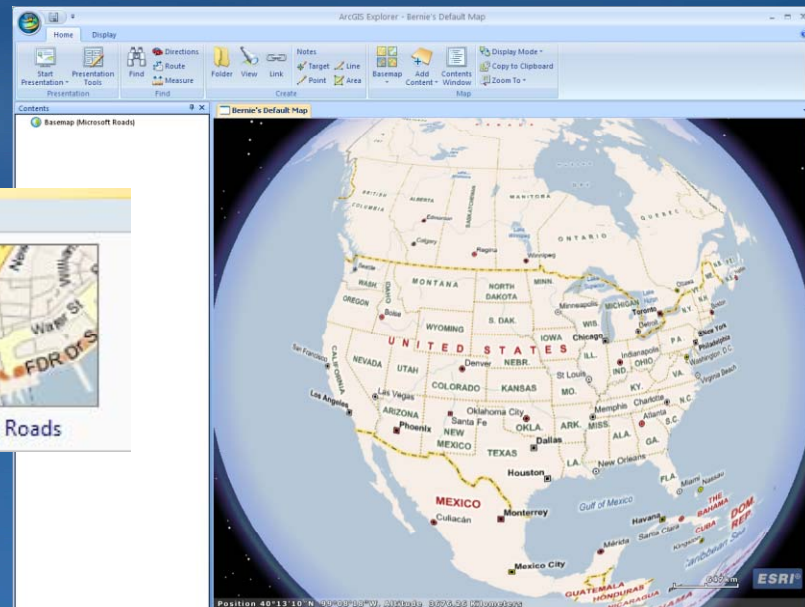
Microsoft Aerial



Microsoft Hybrid



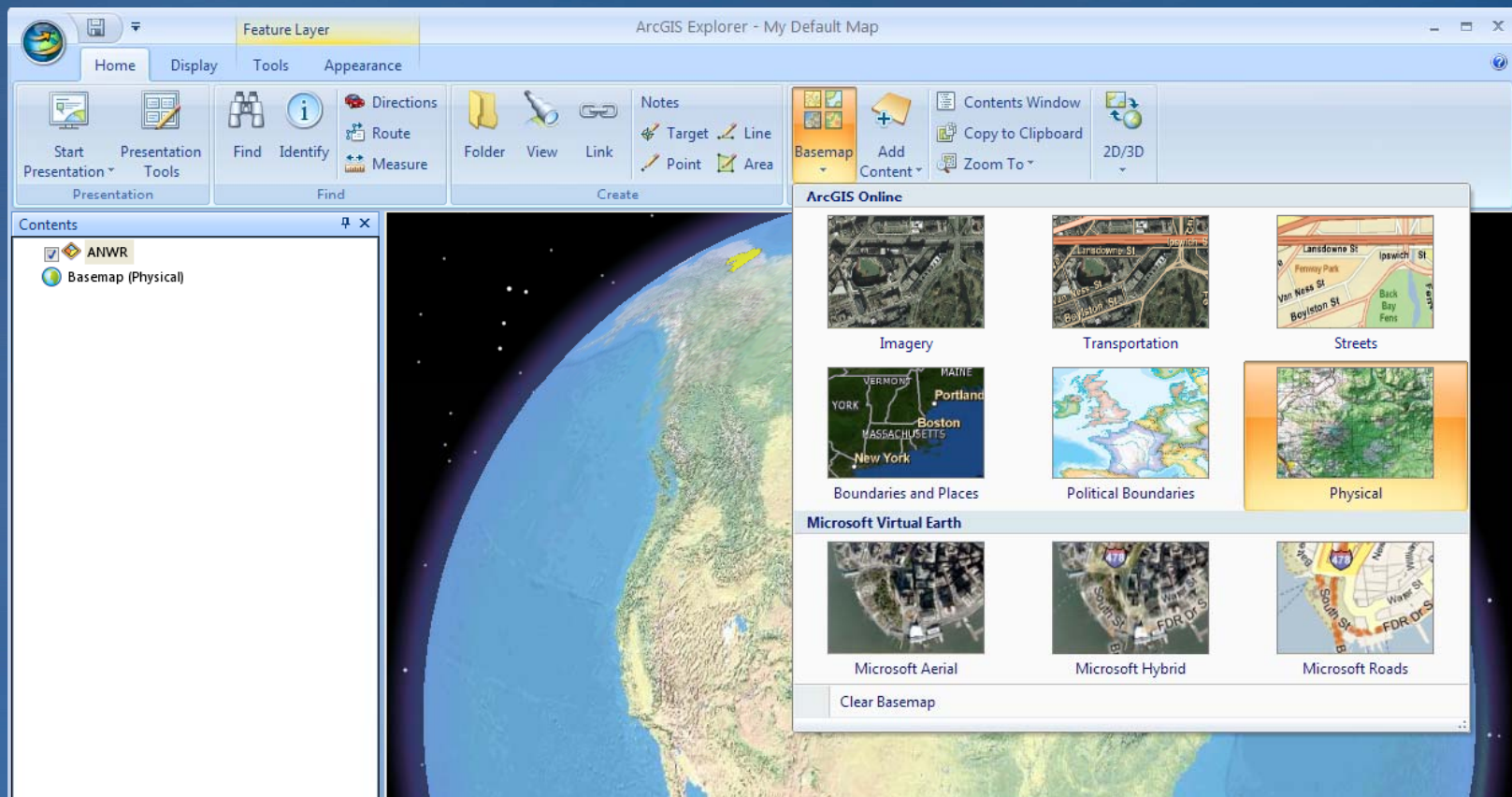
Microsoft Roads



# Basemap Gallery

*Change your basemaps on-the-fly*

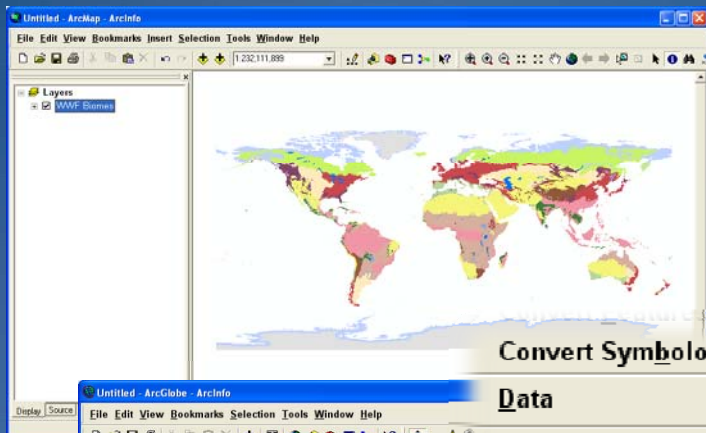
- Click to choose a new basemap while maintaining your operational layers



# ArcGIS 9.3.1 Layer Packages

*Easily shared, brings ArcMap cartography to ArcGIS Explorer*

- Create using ArcGIS Desktop (ArcMap and ArcGlobe)
- Share via ArcGIS Online



Convert Symbology to Representation...

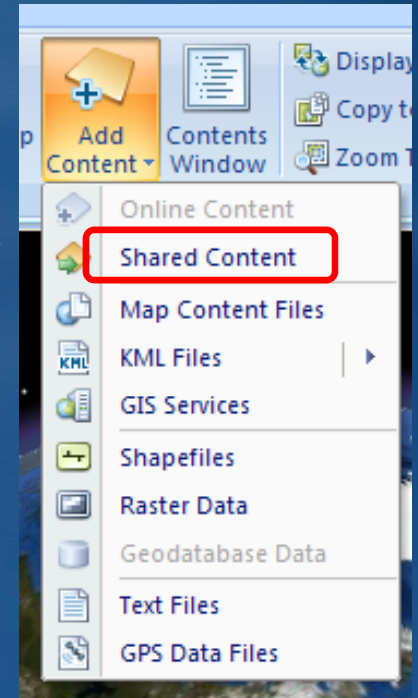
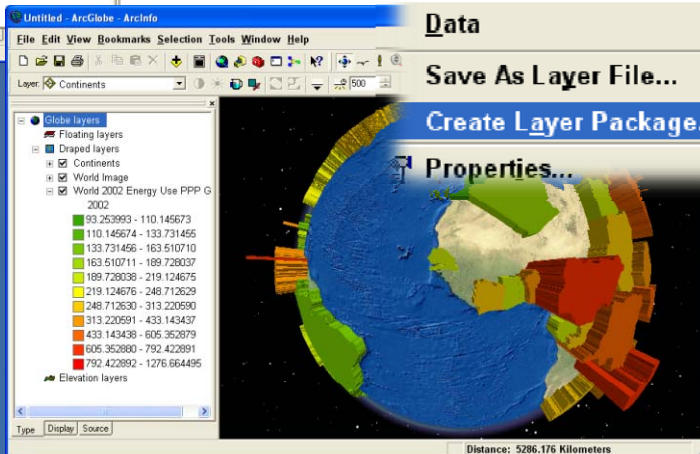


Data

Save As Layer File...

Create Layer Package...

Properties...



# Extended Data Support

## *Improvements and new capabilities*

- Consistent user experience for all content
- Support for layer packages, layer files
- KML/Z improvements (network linked KML)
- Image Server

