

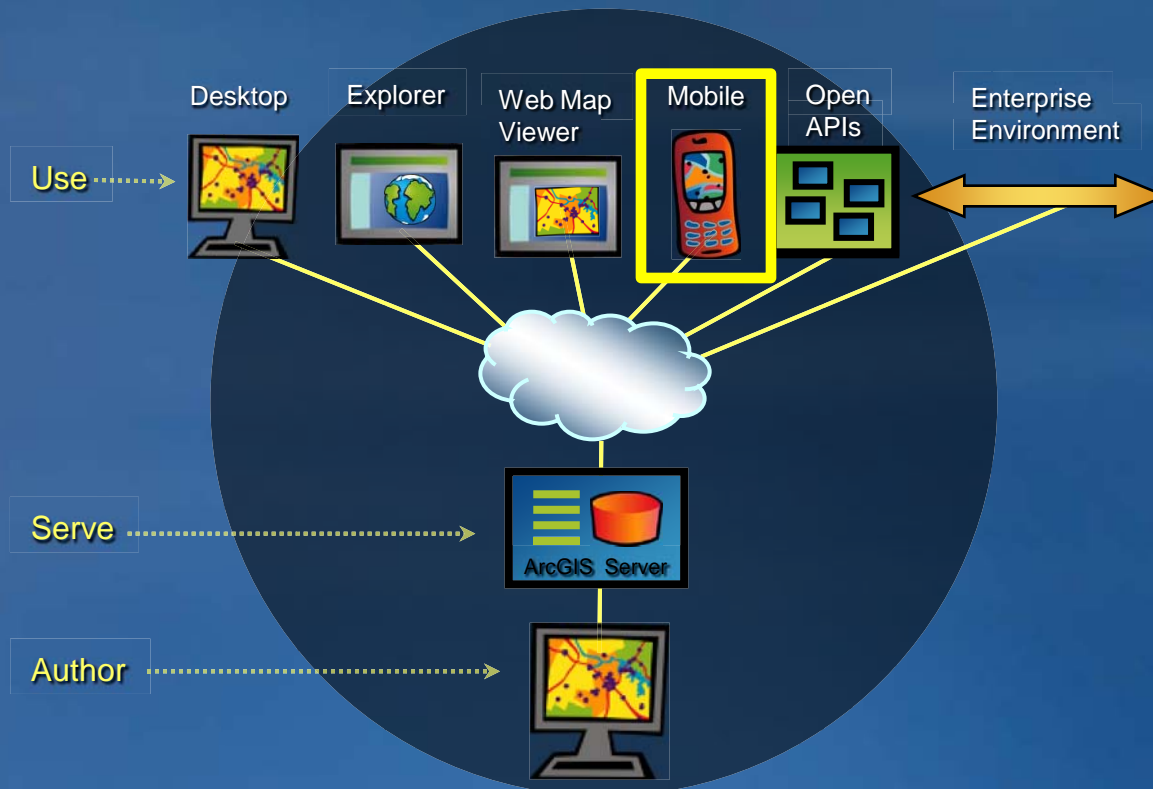
# ArcGIS Mobile: An Introduction

*Matt Still*



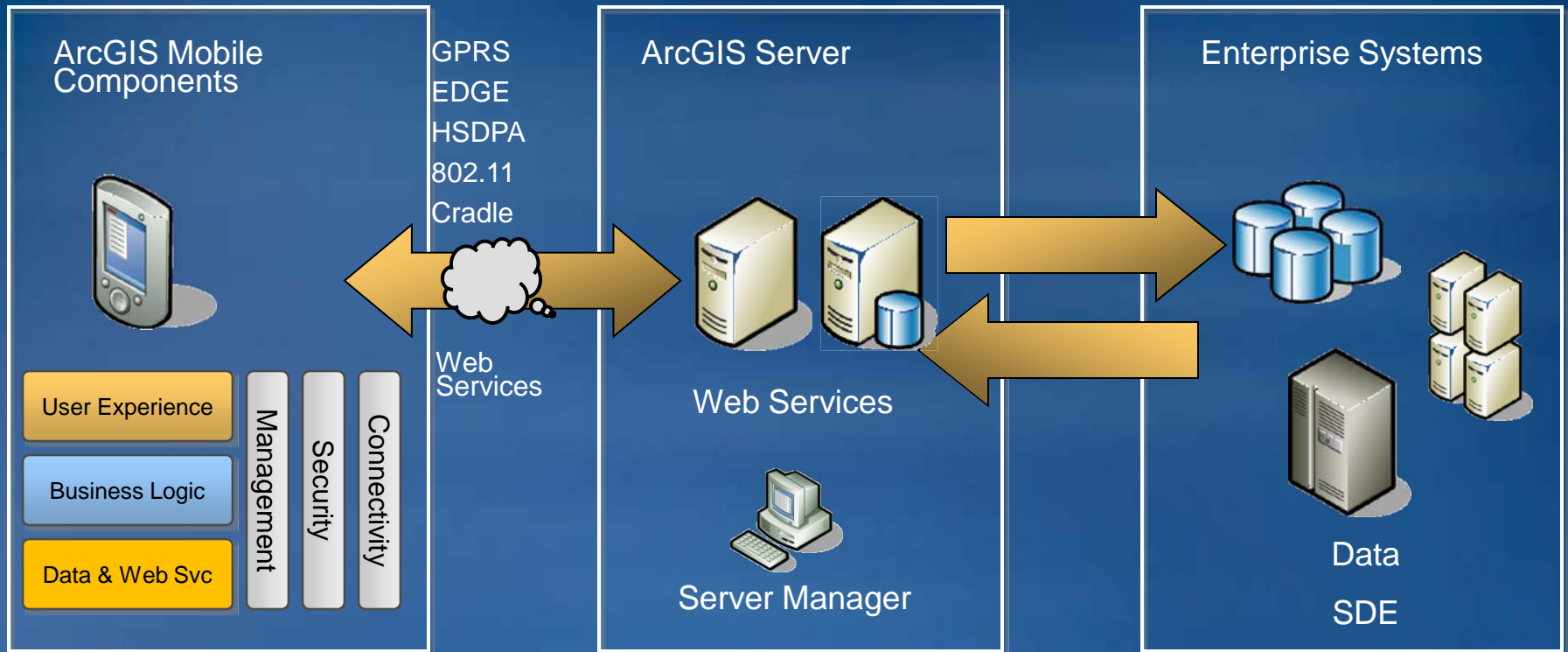
# What is ArcGIS Mobile?

A client to your Enterprise GIS



# How does ArcGIS Mobile work?

## ArcGIS Server Mobile Components



# Why should I use ArcGIS Mobile?

- **Ensure free flow of critical information**
- **Increase operational awareness**
- **Leverage existing investments**
- **Go beyond mobile email**
- **Replace paper/pen methods**

# What can ArcGIS Mobile do?

- **Supports field workflows**
  - Data viewing
  - Asset inspection
  - Basic data collection
  - Run server based analysis
- **Up to date information and applications**
  - Self updating Applications and data
- **Visibility into the mobile workforce activities**
  - Activities can be synchronized with ArcGIS Server
- **Work connected or disconnected**

# What are the benefits of ArcGIS Mobile?

- **Field Crews are part of our data maintenance process**
  - Eyes and ears of our data
- **Allows mobile users to make more informed decisions**
  - Access to current data
- **Eliminates time in the office managing field applications**



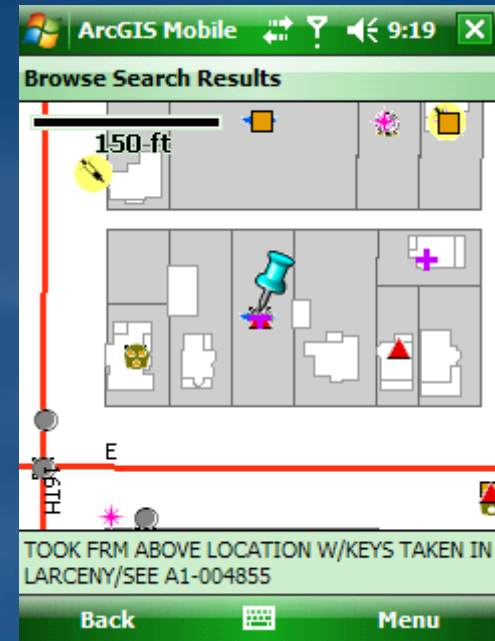
# ArcGIS Mobile 9.3

- **New Ready-To-Use Mobile Application**
  - Easy to deploy and use for field data collection and inspections on Windows Mobile devices
  - View and navigate maps
  - Collect and edit GIS features
  - Use device rocker, stylus, or GPS to sketch
- **SDK Enhancements for .NET and .NET Compact Framework 2.0**
  - Improved data storage capabilities
  - Improved editing and new sketch tools
  - Expanded projection support
  - Increased GPS performance



# ArcGIS Mobile Application

- Out-of-the-box application
- Task-driven user experience
- Configurable using Server Manager
- Targets:
  - Simple GIS Feature Editing
  - Map Viewing
- Target Platforms:
  - Windows Mobile 5 Pocket PC
  - Windows Mobile 6 Professional



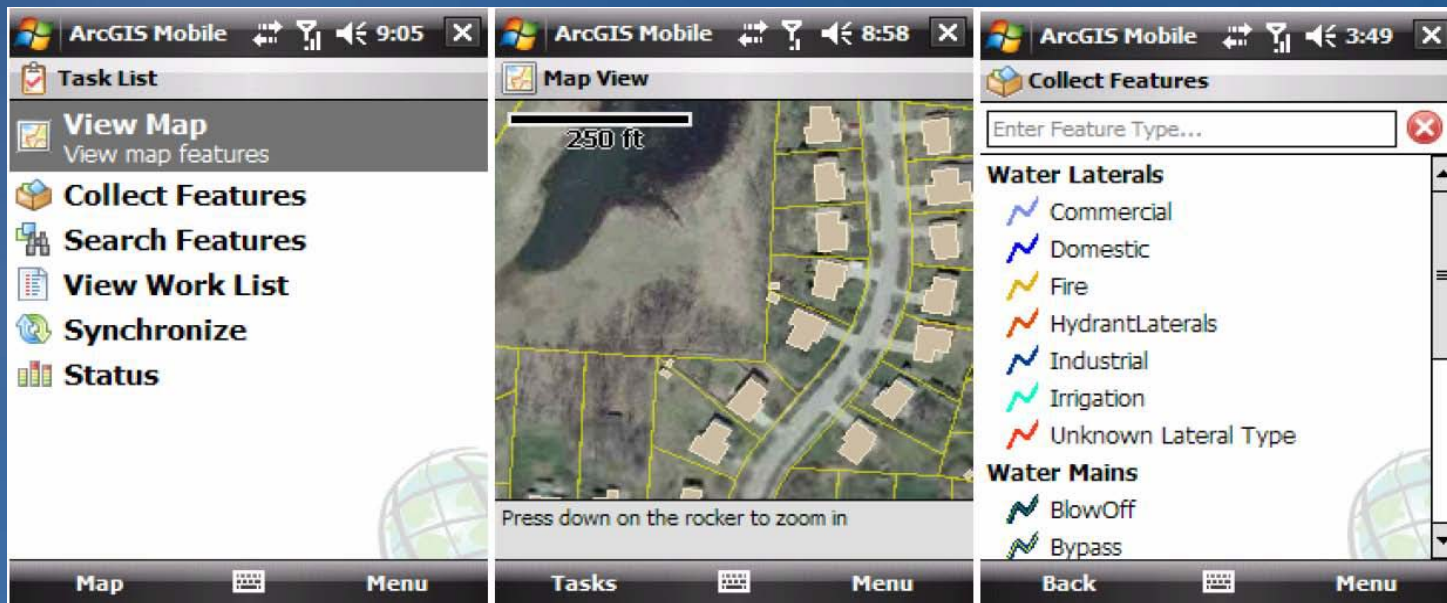


**Demo**

# ArcGIS Mobile Application

- ArcGIS Mobile application

- Task-based mobile GIS application managed with ArcGIS Server
- Designed for rapid deployment to Windows Mobile devices
- Provides local caching of map data and wired or wireless editing



# ArcGIS Mobile SDK

- **Suite of .Net Mobile GIS components**
  - Drag and Drop controls
- **Designed for Client-Server applications**
- **Leverage Visual Studio 2005/2008 WinForms**
- **Small footprint and high performance**
- **Comprehensive developer help**
  - Visual Studio integration
  - Walkthrough, Samples
  - Online documentation

# ArcGIS Mobile SDK : Features Overview

- Support multiple connectivity scenarios
- Long and Short Transactions
- Versioned editing
- Provide disconnected editing capabilities
- GPS integration

# ArcGIS Mobile SDK: Target Platforms

- Microsoft .NET/.NET Compact Framework 2.0
- Windows Mobile 5.0/6.0
  - PocketPC
  - SmartPhone
- Windows Mobile for Pocket PC 2003, 2003 SE
- Windows CE 5.0
- Windows XP/Vista

# ArcGIS Mobile workflow

- 1. Build your Geodatabase**
- 2. Author a Map for your mobile service**
- 3. Design your Mobile Application**
  - a) (Optional) Integrate with existing solutions**
- 4. Secure server and client data**
- 5. Serve your Mobile Map Service**
- 6. Deploy your Mobile Solution**
- 7. Synchronize your Mobile GIS solution**



# ArcGIS Mobile 9.3 SDK

## Key 9.3 Improvements:

- Ease of Deployment
- Performance improvements
- Improved Editing tools/sketching API
- Better Support for Projections
- Simplified coordinate management

# Deployment Improvements

- At 9.2 SDK runtime deployed with each application (to application folder).
- At 9.3 SDK runtime is deployed once.
- SDK runtime is provided as a signed .CAB file.

# Performance Improvements

- Support for static, local base map data
- Improved handling of server requests when retrieving data
- Improved handling of GPS display

# Editing tools

- Improved, simplified API for sketching.
- New sketch tools for updating existing geometries.
- Sketch display handled through new SketchGraphicsLayer
- Ability to create your own sketch tools

# Projections

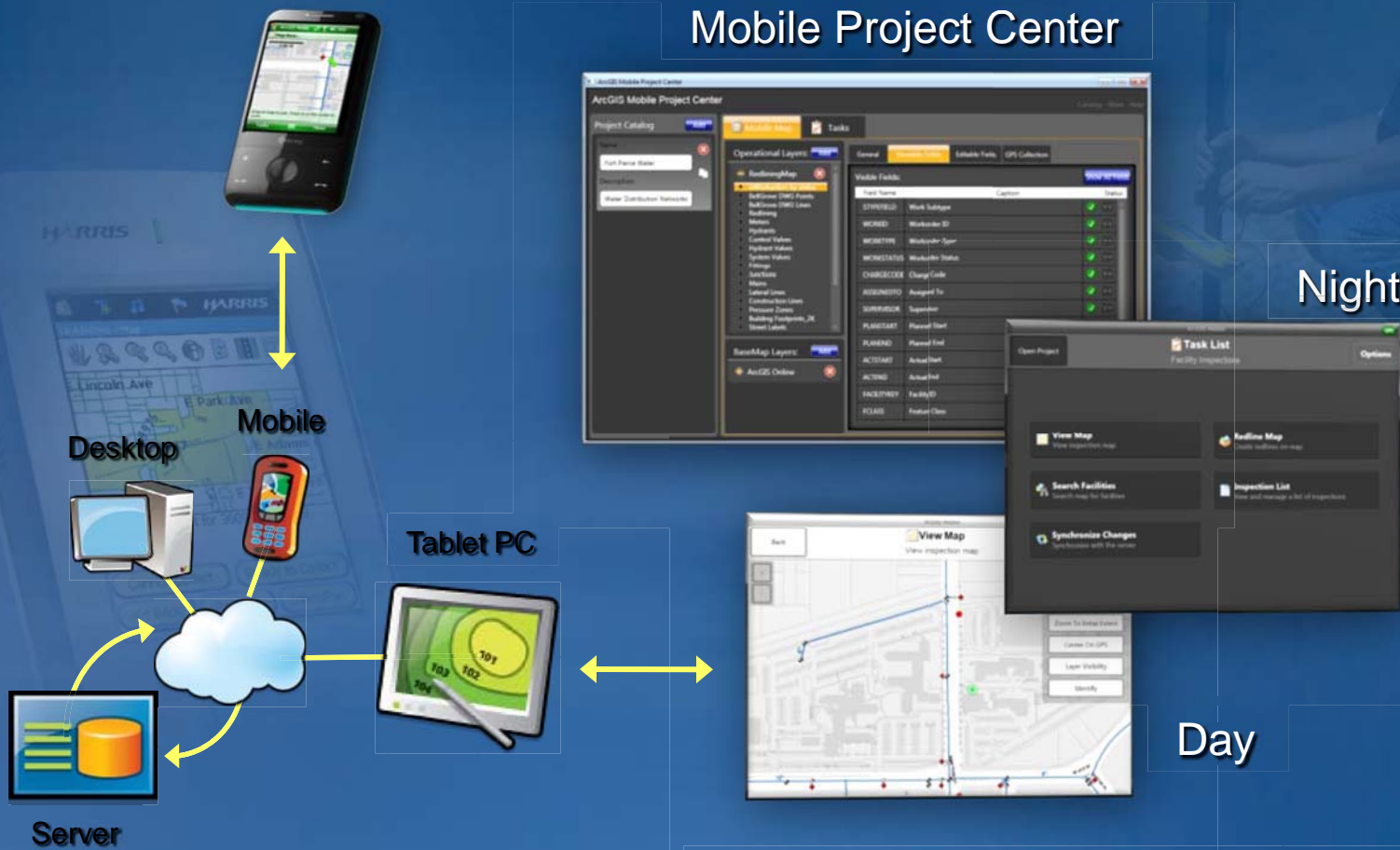
- Improved support of ArcGIS map projections.
- Now Mobile client supports all but GRID/HARN based map projections

**Demo**



# ArcGIS Mobile 9.4

*Same Application, New Platform and Management Support...*



*Improved Productivity for Your Customers...*

# Resources

- **Mobile Resource Center**
  - <http://resources.esri.com/arcgismobile>
- **Mobile Devopment and Deployment**
  - <http://msdn.microsoft.com/mobility>
- **Mobile Training Resources**
  - <http://training.esri.com/>

**Questions?**