

# Getting Started with ArcGIS Server

*Matt Still*



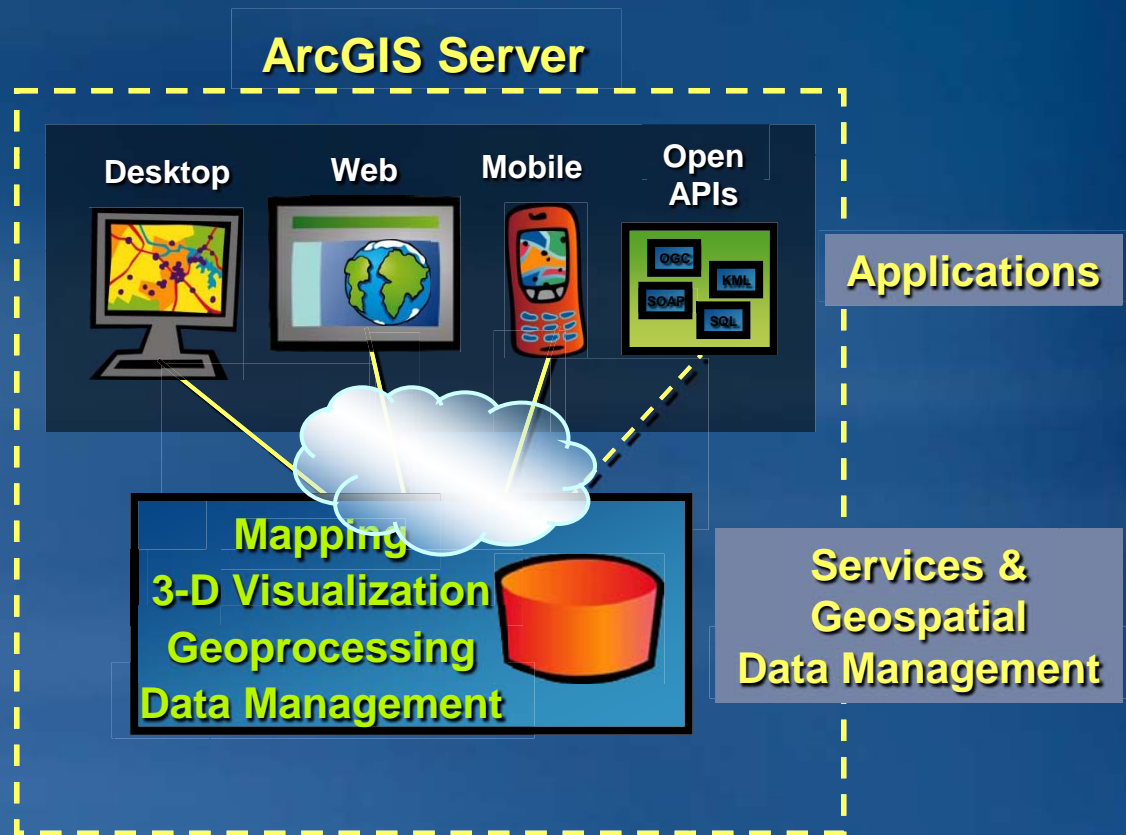
# Session Overview

- Overview of ArcGIS Server 9.3
- Working with GIS Services
- Using desktop, web, and mobile clients
- Questions

# ArcGIS Server

*Complete & interoperable Server-Based GIS*

- Enterprise ready
- Open API's
- Support for IT, Web and Industry standards
- Scalable
- High performance



*Making GIS Knowledge Available To Anyone . . .*

# What is ArcGIS Server?

- **Author** ArcGIS files in a familiar environment (ArcMap, ArcGlobe, ModelBuilder)
- **Serve** ArcGIS files (.mxd, 3dd, .tbx, etc.) as Geoservices
- **Use** in a wide variety of clients
  - Desktop
  - Web
  - Mobile



# What are GIS services?

- **GIS Service = GIS resource running on a server**
  - vs. GIS application on your local computer
- **Almost any GIS operation that you can do locally may also be run using a service**



# What types of services can ArcGIS Server offer?



## Map

View or query a 2D map on the server



## Globe

View or query a 3D globe on the server



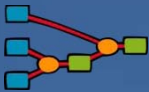
## Geocode

Perform address matching on the server



## Geodata

Perform data replication, extraction, or query over the intranet or Internet



## Geoprocessing





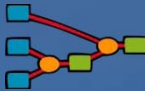

Run a tool or model on the server and get the results back



## Image

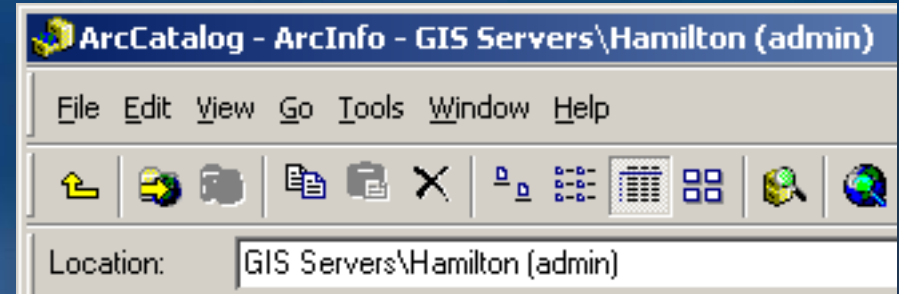
Provide access to raster data through a Web service

# What do I need to author?

Service type	Published using
 A small icon of a map with a yellow background and blue lines representing roads or paths.	Map document (.mxd or .pmf)
 A small icon of a globe showing the Earth with green continents and blue oceans.	Globe document (.3dd)
 A small icon of a geocoding device, possibly a handheld GPS or a specialized computer terminal.	Locator (.loc file or geodatabase)
 A small icon of a red cylindrical database or data storage container.	Geodatabase connection (.sde) or Map document with geodatabase layer
 A small icon representing a workflow or geoprocessing tool, with colored boxes and connecting lines.	Toolbox (.tbx) or Map document (.mxd) with tool layer
 A small icon of a map with a yellow background and blue lines, similar to the first map icon.	Raster dataset or layer file (.lyr) or image service file (.iscdef)

# How do I manage my server?

- **ArcCatalog (Desktop)**
  - Manage and publish services
  - Modify server configuration
- **ArcGIS Server Manager (Web)**
  - Manage and publish services
  - Modify server configuration
  - Create mobile and web applications
  - View logs
  - Manage security





# **DEMO - PUBLISHING SERVICES**

# What clients can I use with ArcGIS Server?

## – Web Application

- Server based: .NET, JAVA
- Browser based: JavaScript / Flex via REST



## – Desktop client

- ArcMap, ArcGIS Explorer, ArcReader, ArcGIS Engine application



## – Mobile client

- ArcGIS Mobile application for Windows Mobile devices
- .Net SDK for Mobile and Tablet platforms



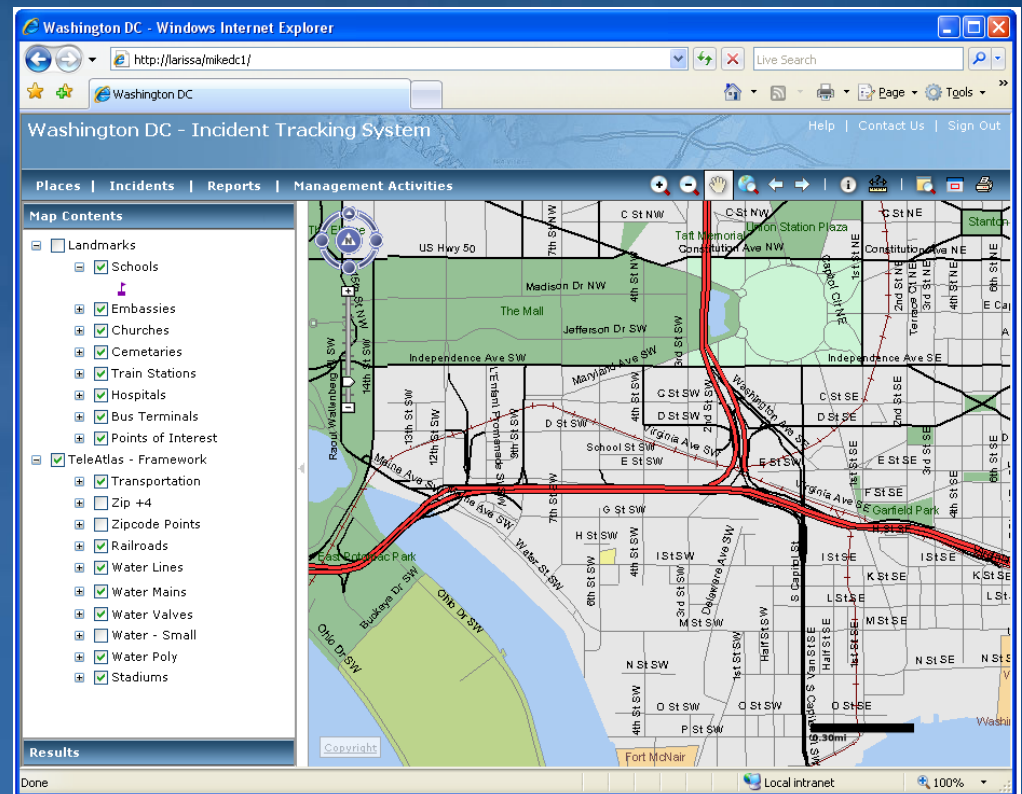
## – OGC clients (via WMS, WFS, WCS, KML)

- OpenLayers, Gaia, Google Earth...



# Web Mapping Application

- Use many kinds of services
  - ArcGIS Server, ArcIMS, WMS, ArcWeb Services, etc.
- Many tasks
  - Search and Query
  - Geoprocessing
  - Printing
  - Data editing
  - Finding addresses
  - Finding a place name



# **DEMO - USING SERVICES: WEB MAPPING APPLICATIONS**

# What clients can I use with ArcGIS Server?

## – Desktop client

- ArcMap, ArcGIS Explorer, ArcReader, ArcGIS Engine application



## – Web Application

- Server based: .NET, JAVA
- Browser based: JavaScript / Flex via REST



## – Mobile client

- ArcGIS Mobile application for Windows Mobile devices
- .Net SDK for Mobile and Tablet platforms



## – OGC clients (via WMS, WFS, WCS, KML)

- OpenLayers, Gaia, Google Earth...





# **DEMO – ARCGIS SERVER CLIENTS**

**QUESTIONS?**