

Web & Mobile GIS for Adding Efficiencies to Water Utilities



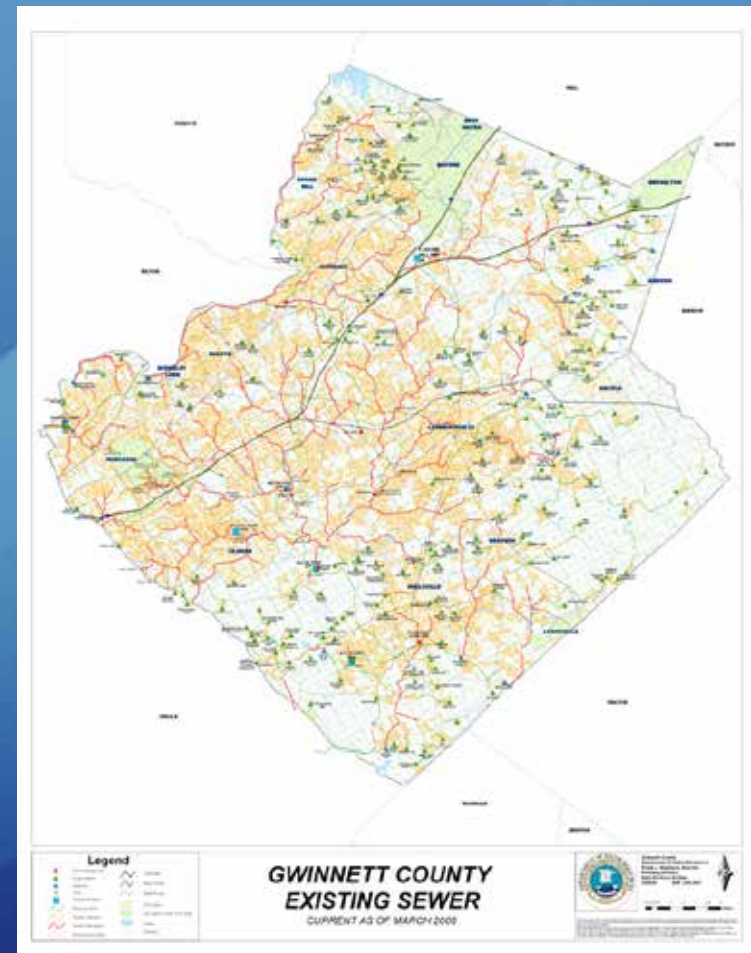
Gwinnett County Quick Facts

- **Suburb of Atlanta**
- **438 Square Miles**
- **2010 Population:
805,680**



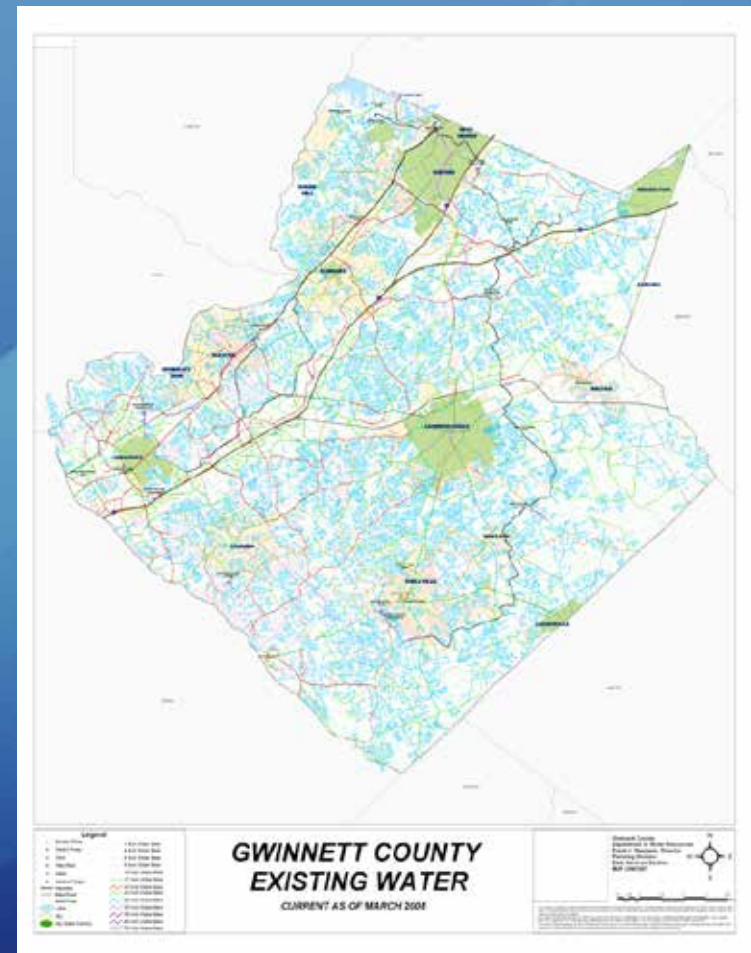
Gwinnett County Sewer System

Ø Gravity Sewer	2,655 Miles
Ø Manholes	74,979
Ø Force Mains	279 Miles
Ø Pump Stations	229
Ø Water Reclamation Facilities	5



Gwinnett County Water System

Ø Water Mains	3,655 Miles
Ø Hydrants	41,810
Ø Valves	38,694
Ø Tanks	13
Ø Booster Pumps	30
Ø Water Production Facilities	2



Problem

Ø Maintaining a Massive Footprint

Ø 250 Desktop

Ø 115 Mobile

Ø Multiple Apps for Info

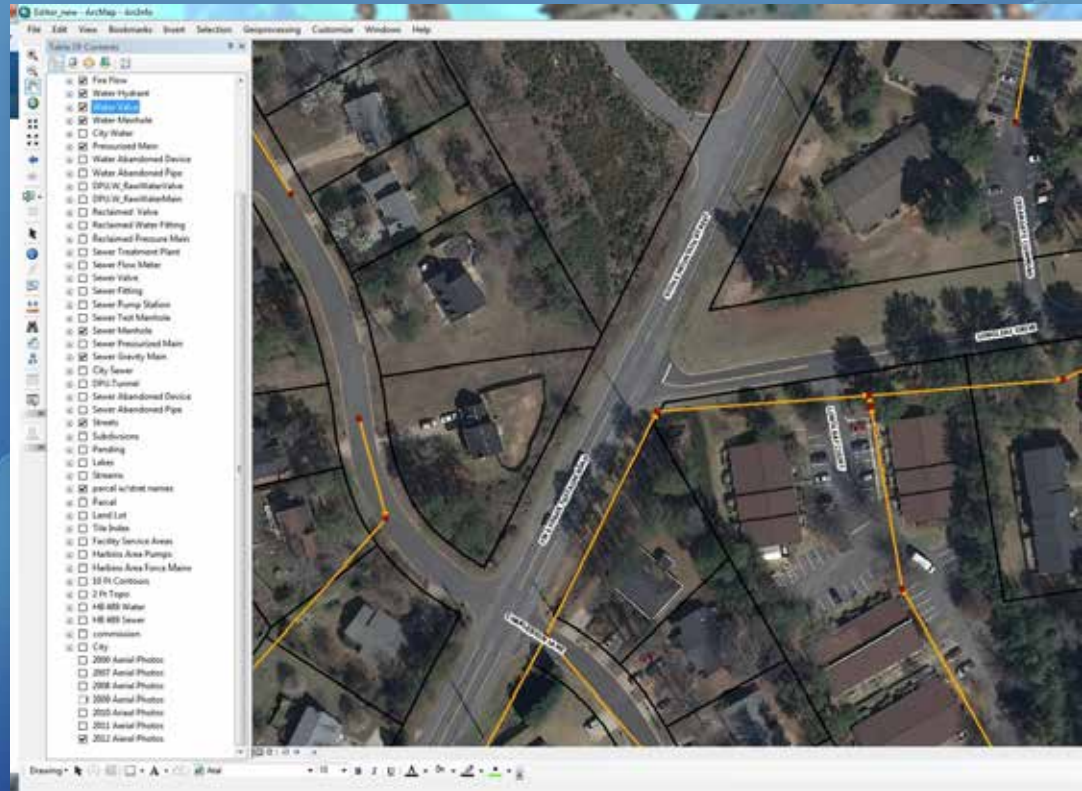
Ø GIS

Ø As-Builts

Ø Inspections

Ø Non Intuitive – Had to be a

GIS Geek



Solution



Please select a Utility:

Sewer



Solution

Department of Water Resources

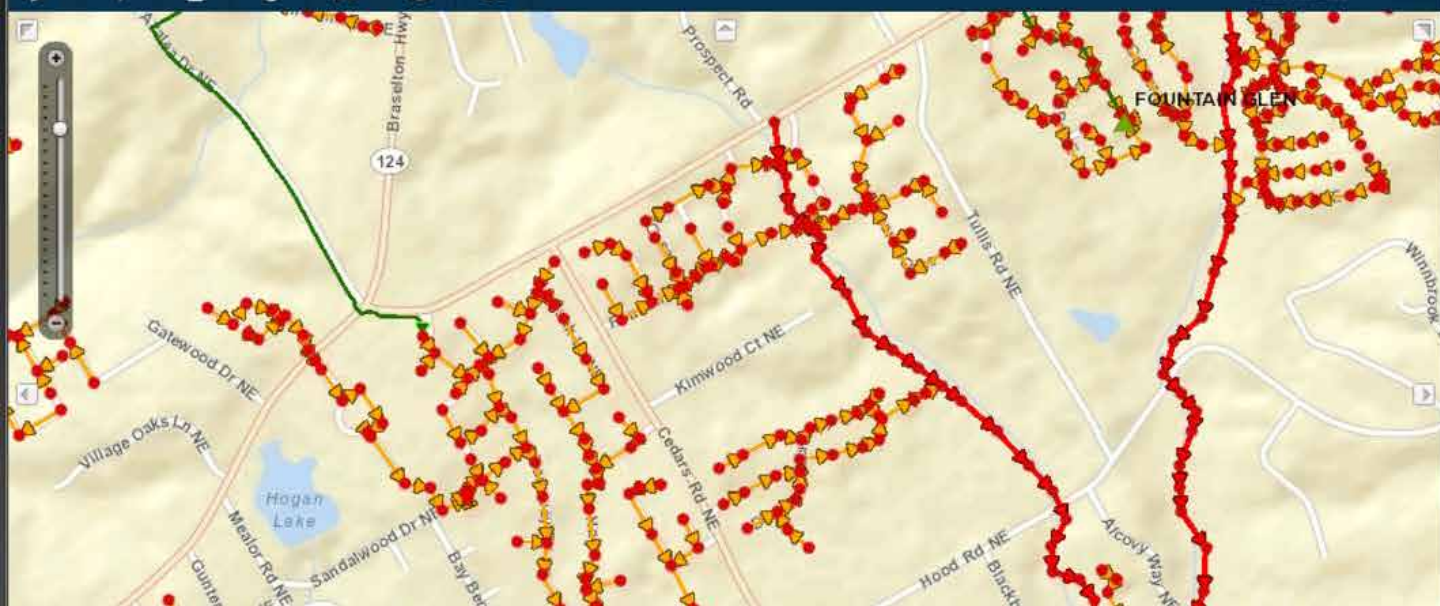
Powered by DWR and GIS

Utility: Sewer
change



lat: 34.011, lon: -83.04
scale: 18055.95

Table of Contents Search



Click each layer to activate/deactivate. Additional details available by expanding layer options.


Operational Services

- Sewer
- Water & Reclaimed Water
- Storm Water
- Background Data
Includes parcels, street names and Wifi locations

Solution



lat: 34.01, lon: -81.95
scale: 2256.99

 **Search**
Feature search complete!

Select a search type and input values to search for. If more than one result is found, a result list will display. Click on the result to zoom to the location.

Search

Select a search type
Feature / Land-base

Select a field
Project Number

s

Results

- S1995D0161
- S1995D0282

Solution

lat: 33.98, long: -84.00
scale: 1128.50

Table of Contents

Search

Identify Features

Select a feature from the drop-down

Storm Water

<i>FACILITYID</i>	810961
<i>SUBTYPE</i>	LakeLine
<i>STREAM</i>	Null
<i>County_Maintained</i>	No
<i>Condition</i>	Fair
<i>SHAPE.LEN</i>	96.992356
<i>Shape</i>	Polyline

Select a search type and input values to search for. If more than one result is found, a result list will display. Click on the result to zoom to the location.

Search

Select a search type

Feature / Land-base

Select a field

Project Number

s

Results

S1995D0161

S1995D0282

Results

Added efficiency! Translated into savings (money & time) for the DWR

Ø Footprint Reduction

Ø 200 Desktop

Ø 115 Mobile

Ø Gateway to information

Ø 1 App for GIS, As-Builts, Inspections, etc.

Ø Intuitive – Easy to Use

Ø Happy Users

Ø Fast

Ø Limited “hand holding”



Next Steps

- Ø **Lucity Integration (Work Orders)**
- Ø **ArcGIS Online & ArcGIS for Local Government**

Questions

Chris Bagby, GISP
GIS Associate III
Gwinnett County Department of Water Resources
Asset Management and Infrastructure Support
684 Winder Highway
Lawrenceville, GA 30045-5012
(678) 376-6919
Chris.Bagby@GwinnettCounty.com

Kevin Stewart, GISP
Account Manager
Geographic Information Services, Inc.
Phone: 205.941.0442 x 135
Email: kstewart@gisinc.com
www.gisinc.com

