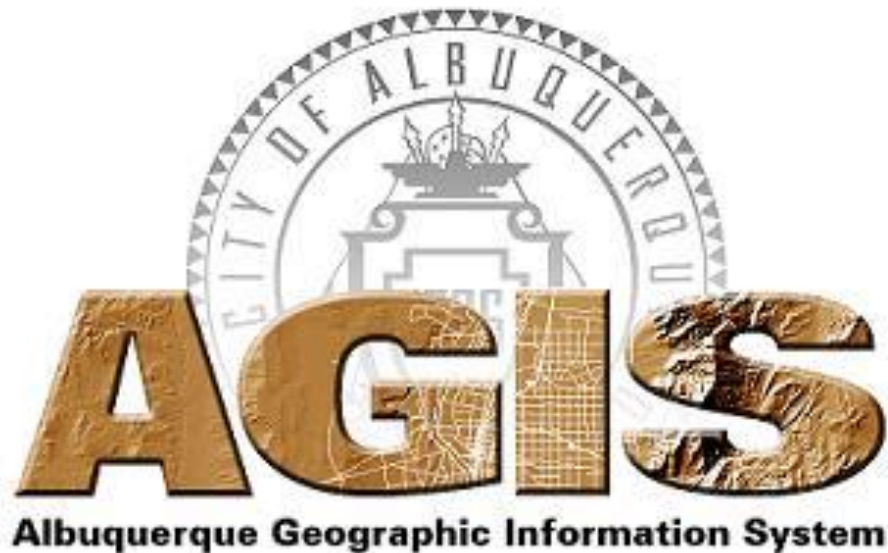


SUPPORTING METROPOLITAN  
REDEVELOPMENT WITH GIS

# ARCGIS ONLINE

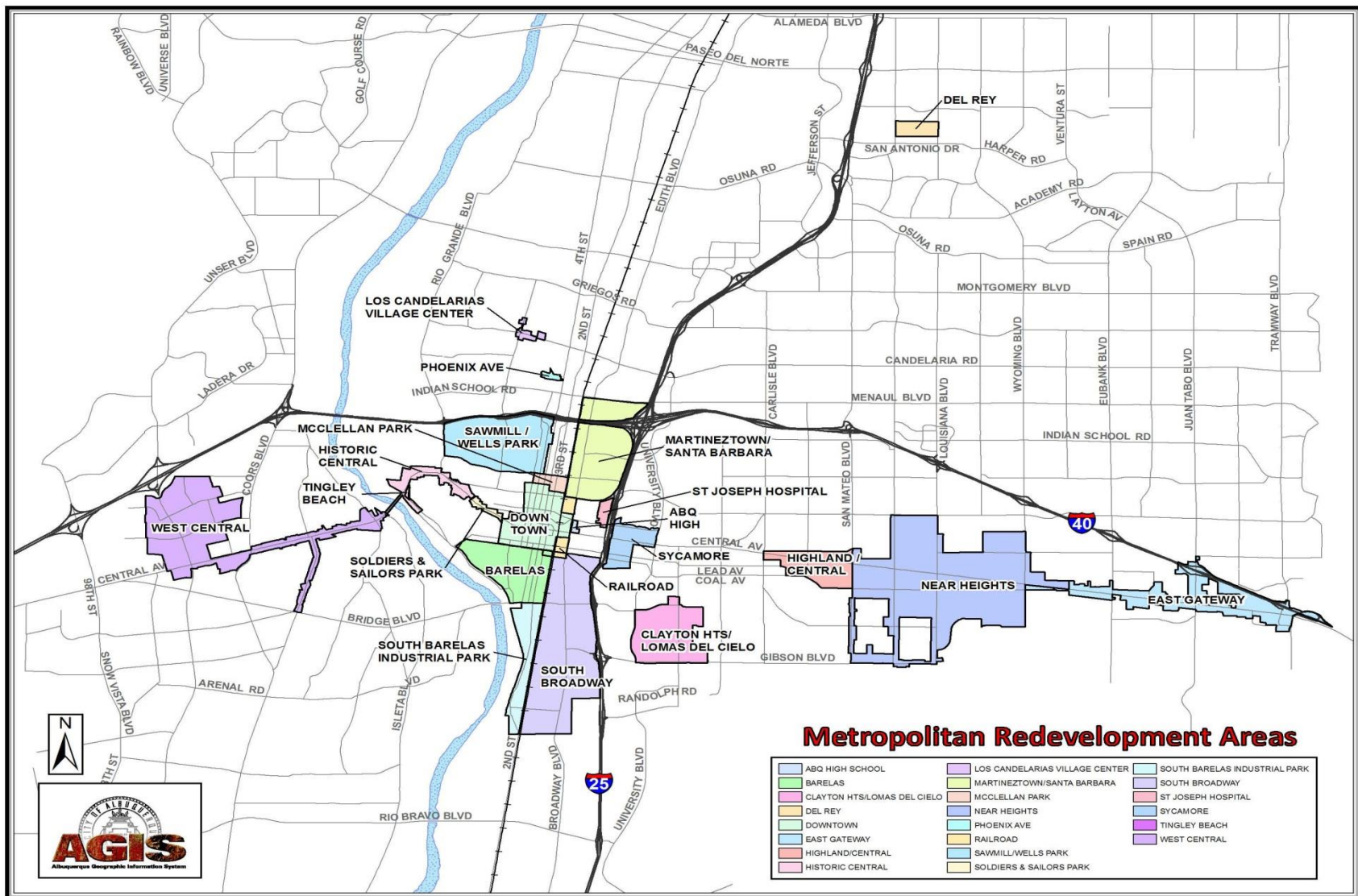


# Metropolitan Redevelopment Code

State statute empowers municipalities to address “slum & blight” and encourage redevelopment by:

- **Designating redevelopment boundary areas**
- **Adopting a redevelopment plan for each designated area and/or one or more projects**

# Metropolitan Redevelopment Areas



# Metropolitan Redevelopment Project Example

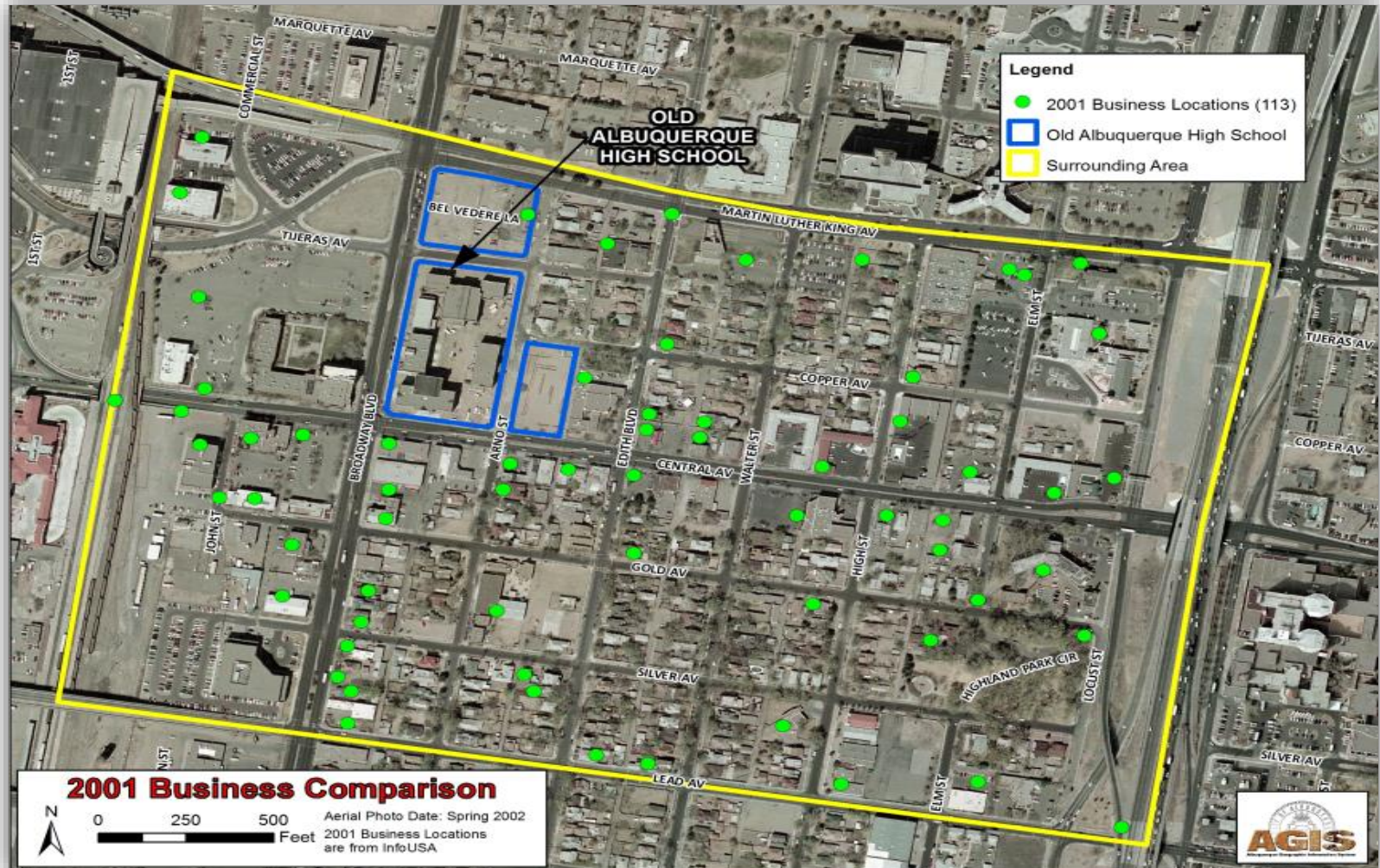
# Old Albuquerque High Lofts





# ABQ High Area Business Licenses

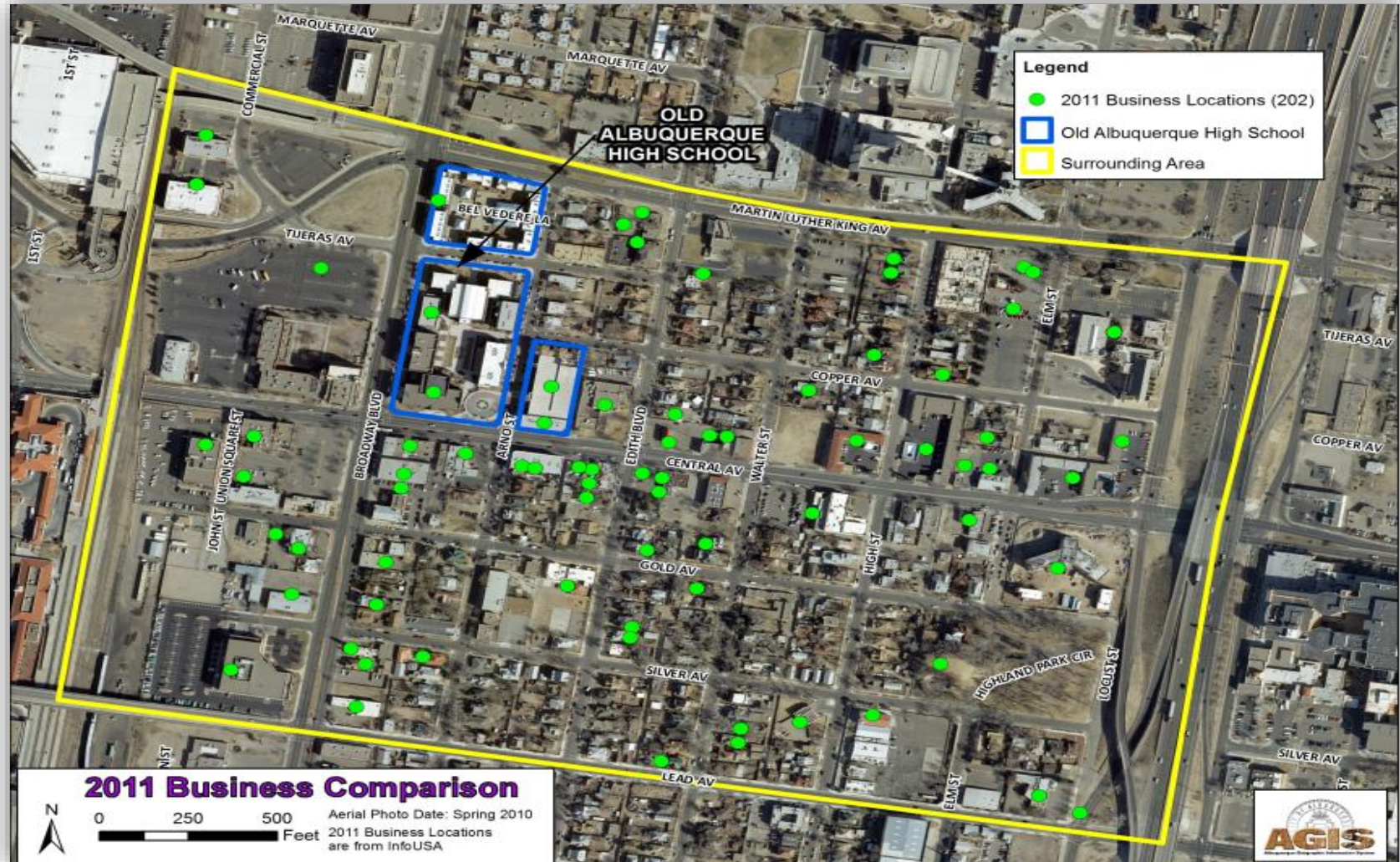
## 2001 Pre-Project **113**





# ABQ High 2011 Business Licenses

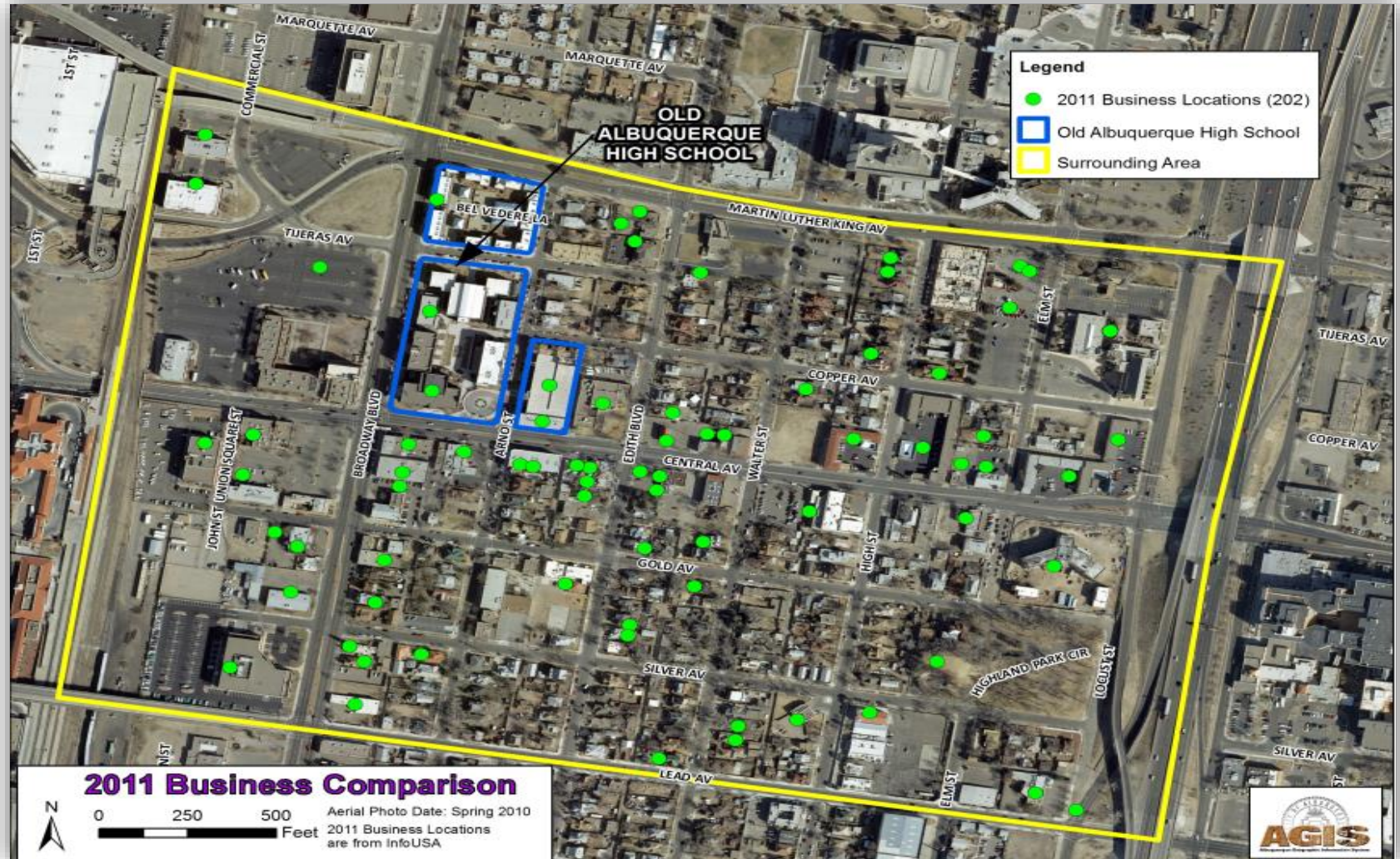
## 2011 Post-Project **202**





# ABQ High 2011 Business Licenses

## 89 New Business Licenses





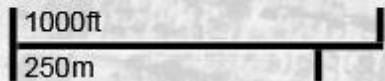
# Bringing People Downtown

# Downtown 1940's



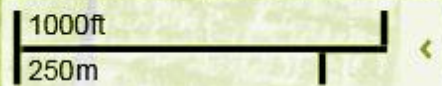


1949



Lat: < >  
Lon: < >

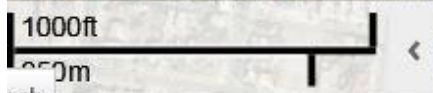




Lat: >  
Lon: >



2014



Lat: < >  
Lon: < >





1000ft  
300m

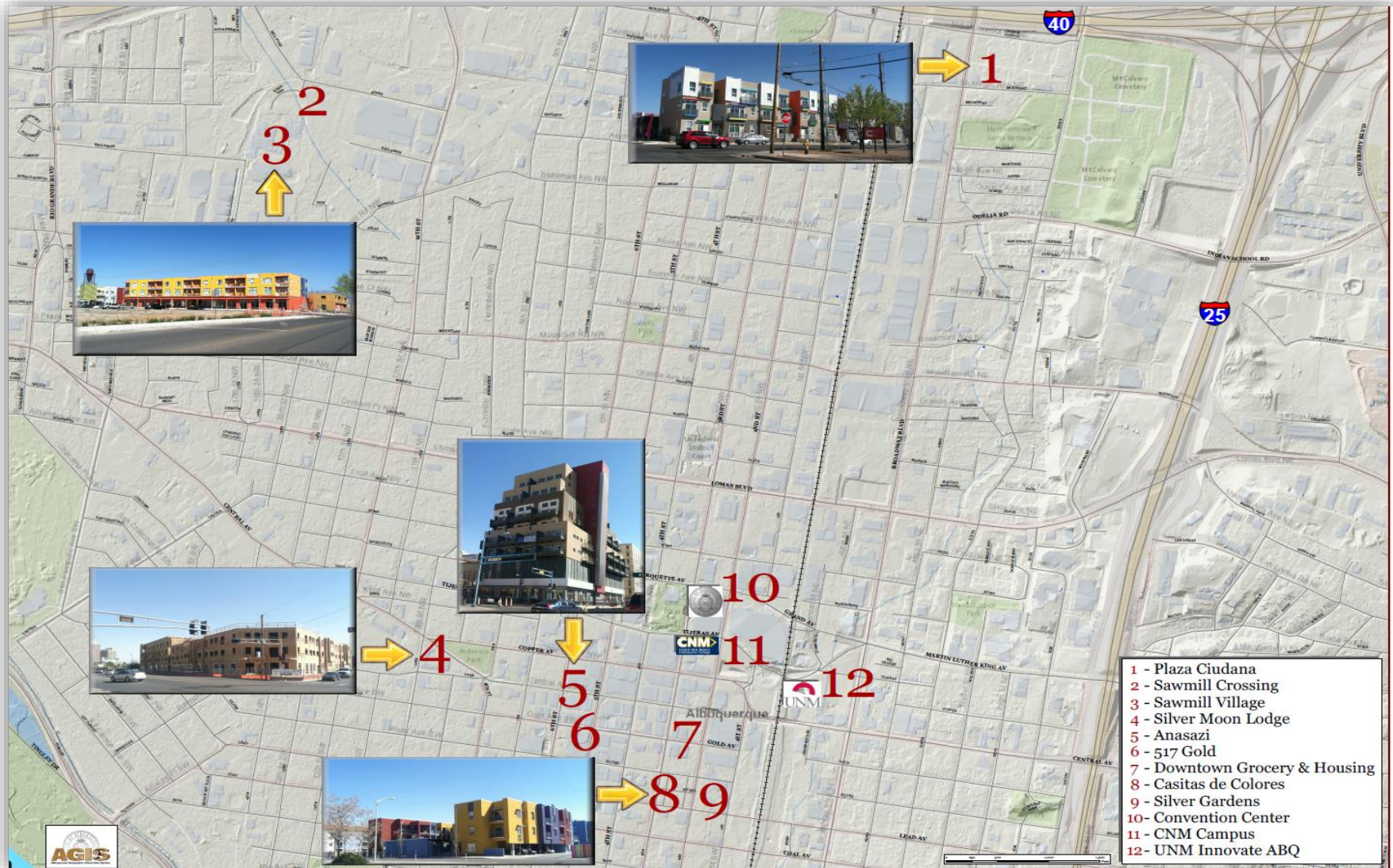
Lat: < >  
Lon: < >



# Downtown MRA Projects

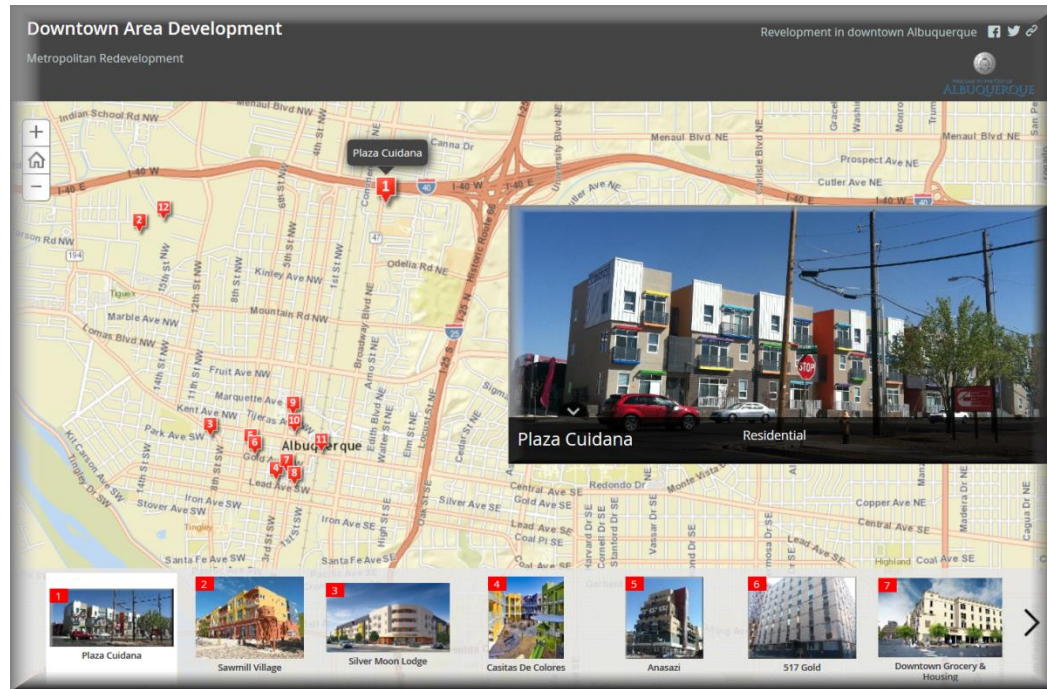
- Casa De Colores
- Plaza Ciudana
- Sawmill Crossing
- Sawmill Village
- Silver Moon Lodge
- Anasazi
- 517 gold
- Silver Gardens
- ...and more

# Downtown Area Projects





## Link to MRA STORY MAP



<http://cabq.maps.arcgis.com/apps/MapTour/index.html?appid=84dcf0540cd74cb297a727fa789a2ed6&webmap=7d62af1b0c634add854970f1534aa47b>

# Thank You

## Contact Info:

- Josh Sammons [jsammons@cabq.gov](mailto:jsammons@cabq.gov)
- Tim Gaulden [tgaulden@cabq.gov](mailto:tgaulden@cabq.gov)