

Transit Planning and Route Implementation using GIS



About Valley Metro

- Public transit agency for the Phoenix, Arizona area
- Light rail
- Bus
- Vanpool
- Paratransit services



Overview

- Planning the route

Route Analysis Tool

- Implementing the route

Bus Stop Database

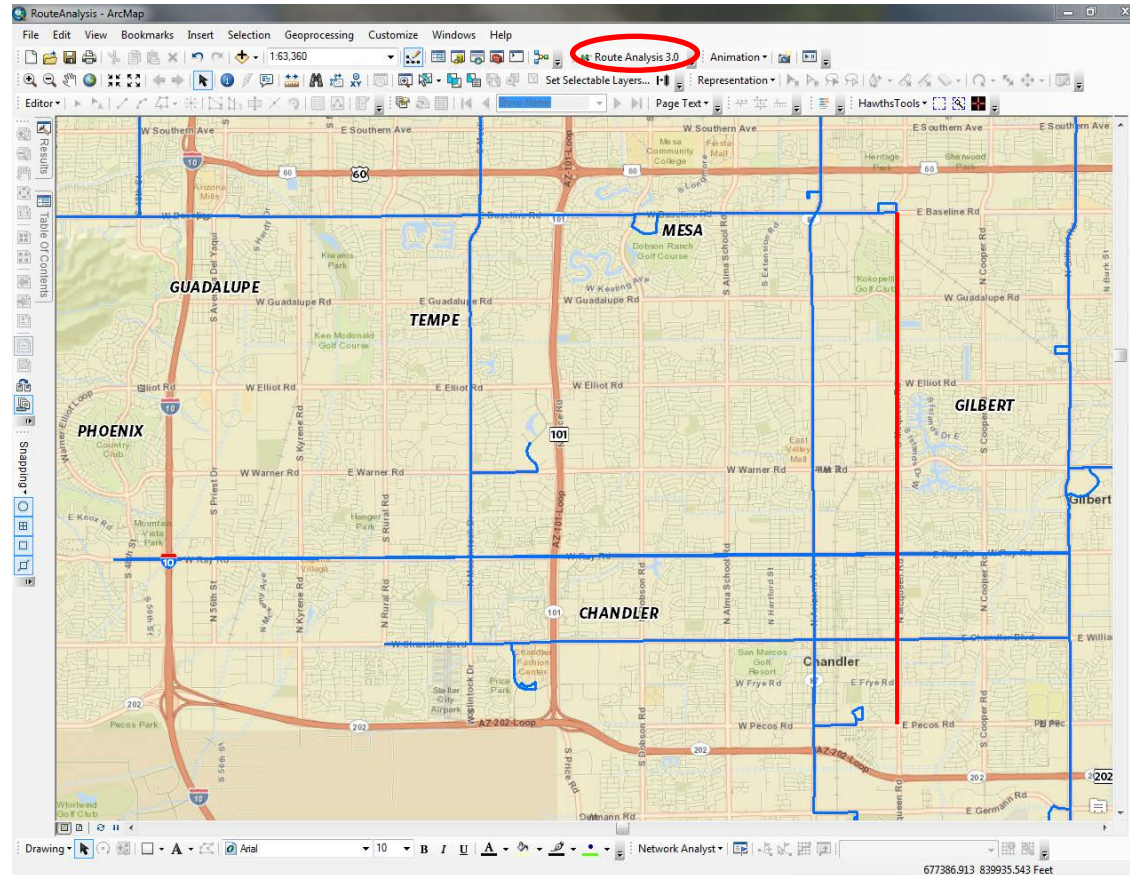
Web Maps

Planning the Route

*GIS is the
best tool
to answer
these
questions*



Route Analysis Tool



Service Type

Fiscal year of
service

Peak and off-
peak frequency

Span of service

Route Analysis Tool Data

Route Specific Data

Number of trips - Miles traveled - Net cost- Fleet Required - Existing Ridership -
Projected Ridership

Demographic Data

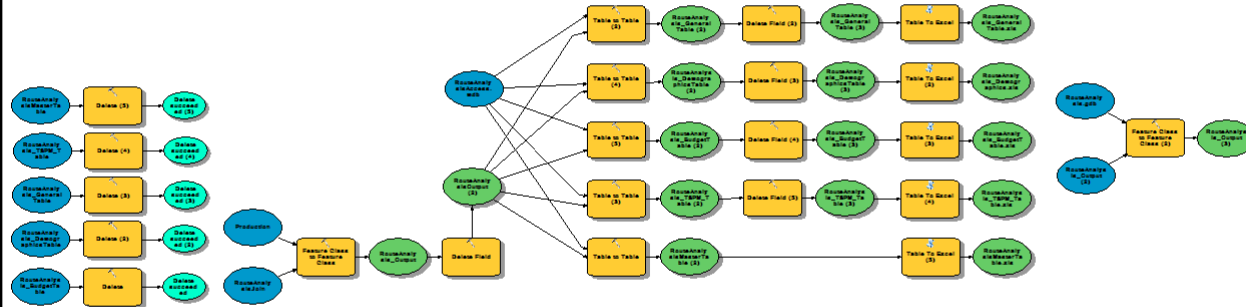
Total Population - Households - **Zero & One Car Households** - **Low Income** - Elderly
Youth - Disability - Minority

Employment

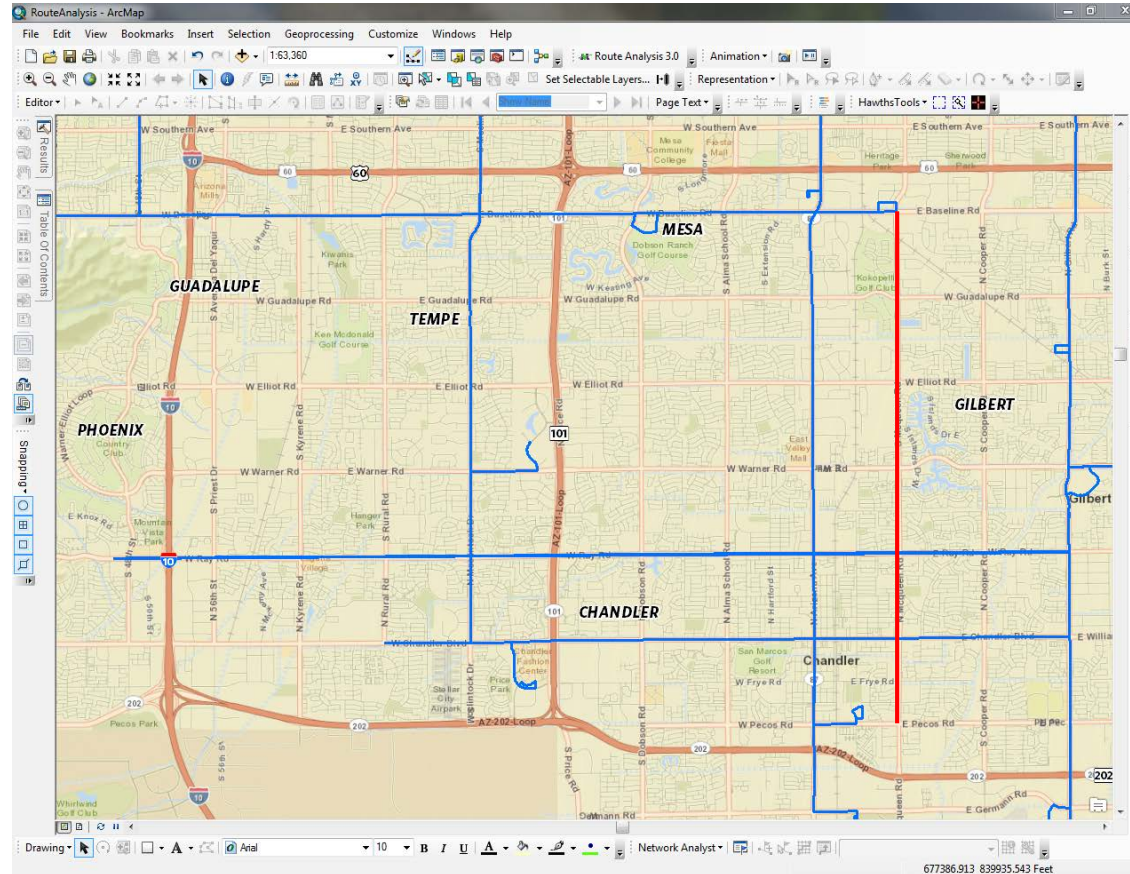
Number of Employees - Current Transit Riders – People Interested in Transit

Route Analysis Tool Models

File Outputs



Route Analysis Tool Example



- Cost: \$1.1 M
- Fleet: 7 Buses

Lower:

- Pop Density
- Minority
- Low Income
- Zero Car HH
- Disability
- Projected Boardings

Higher:

- Youth
- Employment Density

Processing Time:

- 3 Minutes

Route Analysis Tool Benefits

- Ability to quickly analyze potential route.
- Demographics comparison to the entire county and the service area.
- Cost and fleet estimates.
- Speed!!!!

Implementing the Route

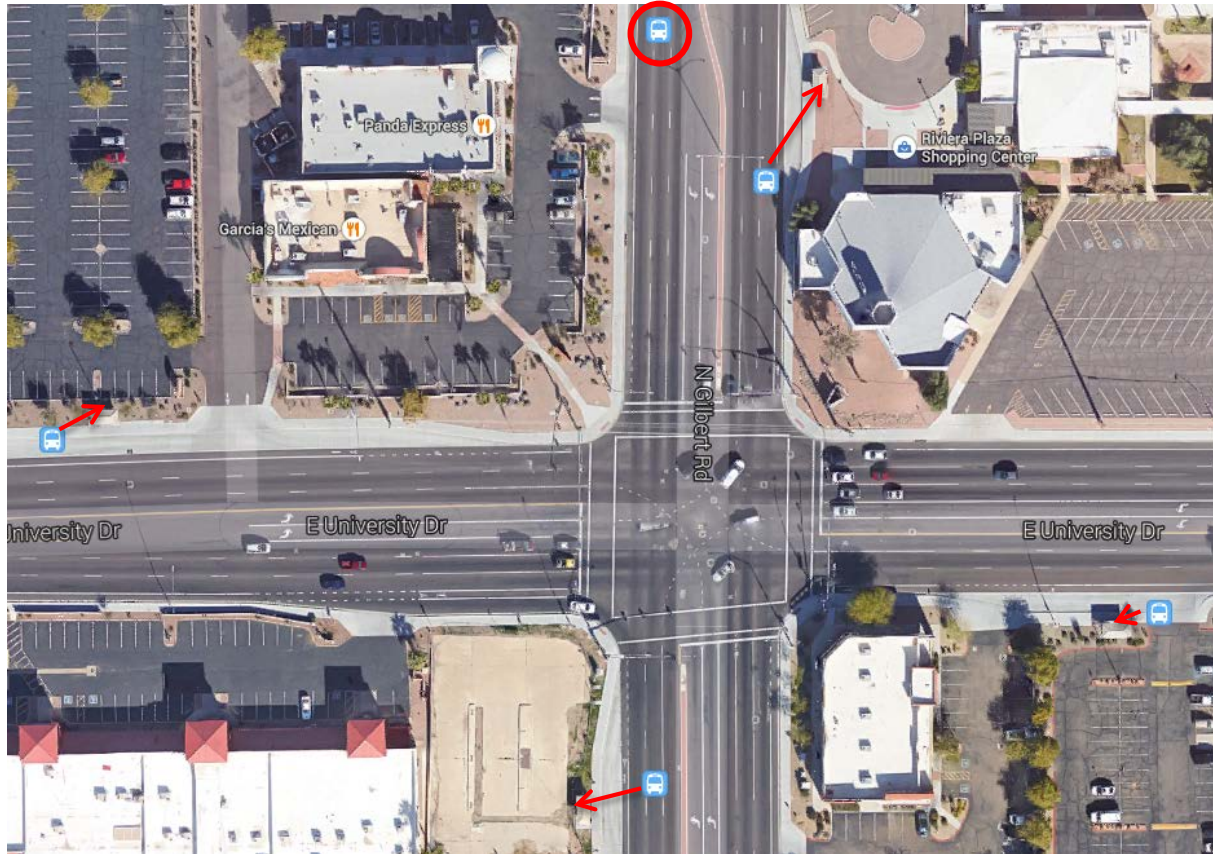
Planning the route



Route in Operation

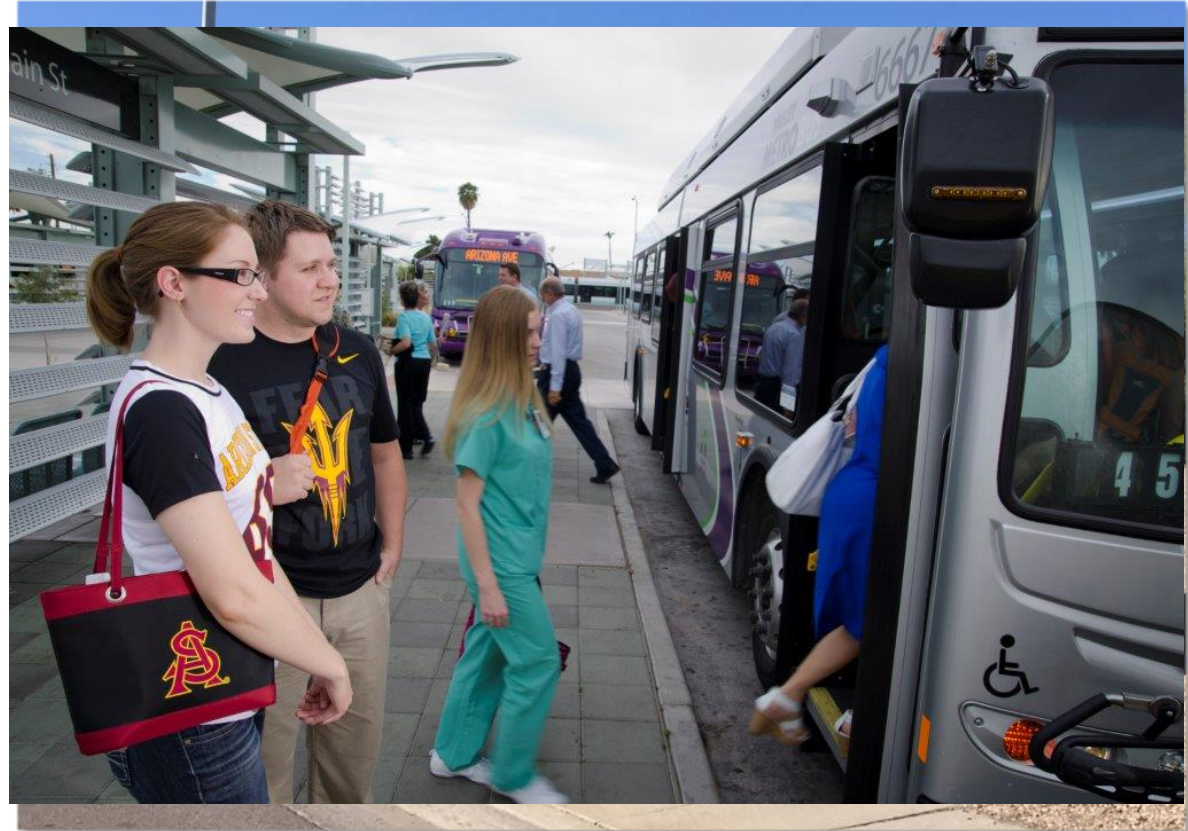


Previous Bus Stop Setup

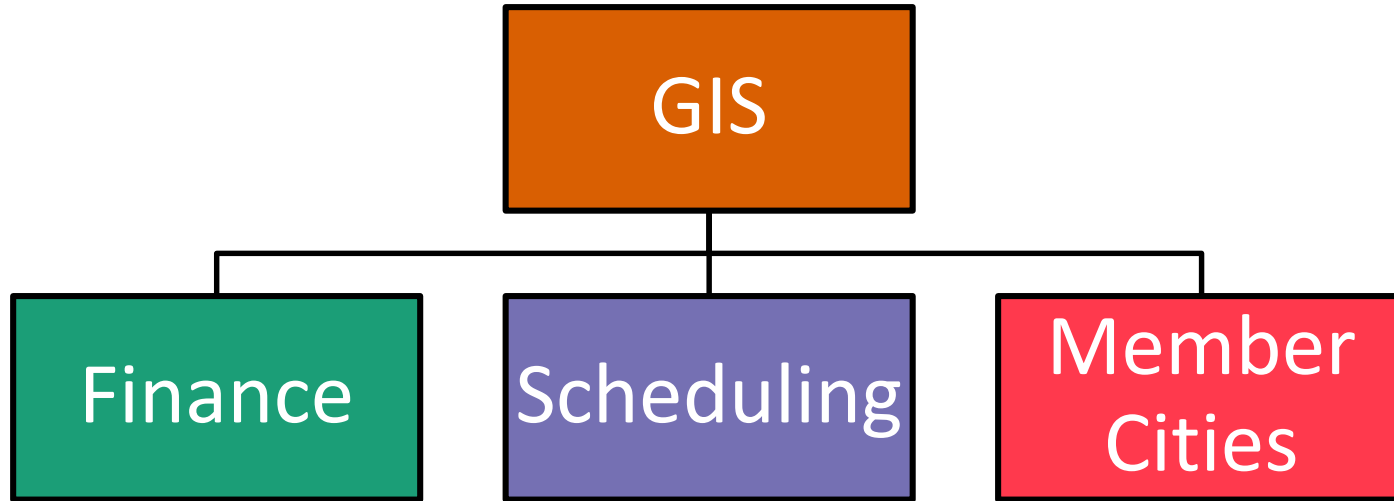


Customer Requirements

- Finance
- Scheduling
- Member Cities
- Actual bus riders



Optimal Bus Stop Data Setup



Bus Stop Data Collection

- Visit
- Validate
- View



Using Collector for ArcGIS

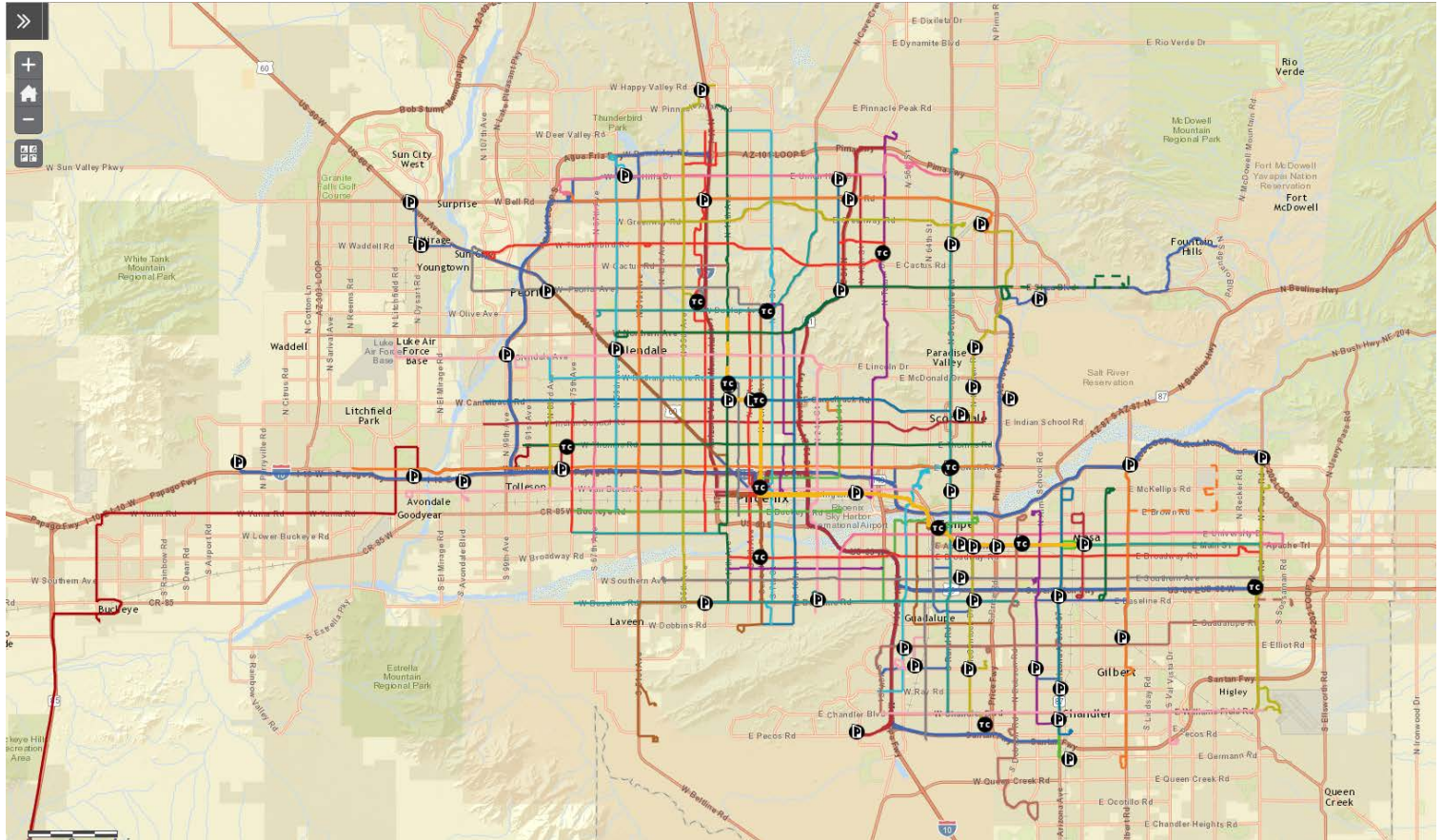
1. Add point to collect location
2. Choose the attributes using coded values
3. Picture



Bus Stop Data Collected

- Bus Stop ID
- NextRide ID
- Generalized Location
- Jurisdiction
- # Shelters
- # Benches
- Bus Bay
- # Bike Racks
- Water Fountain
- Lighting
- Public Art
- ADA Compliant
- Emergency Call Box
- Information Display
- Stop Type
- Date Updated
- Sidewalk
- Photo
- Scheduling ID
- Detailed Location
- Travel Direction
- Latitude
- Longitude
- Routes

ArcGIS Online



Benefits of using a GIS database for bus stops

- Accurate GIS locations and information used to feed information to all the subsequent processes and analysis.
- ONE LOCATION for the data!!!
- Gives the public more accurate and useful information