

The Development of Web Mapping Application: Trails within State Parks



Chang-Heng (Hank) Yang
GIS Specialist
changheng.yang@okstate.edu



Project History

- ▶ Resource Management Plan-Geographic Information System (RMP-GIS)
- ▶ Ongoing collaboration with Oklahoma State Parks (est. 2006)
- ▶ Team
 - ▶ Lowell Caneday
 - ▶ Original PI, ongoing contributor
 - ▶ Adam Mathews [Follow @geoprofmathews](#)
 - ▶ Current PI
 - ▶ Hank Yang
 - ▶ 1.0 FTE; 100% dedicated to project
 - ▶ GRAs (Amanda and Catherine)
 - ▶ .5 FTE



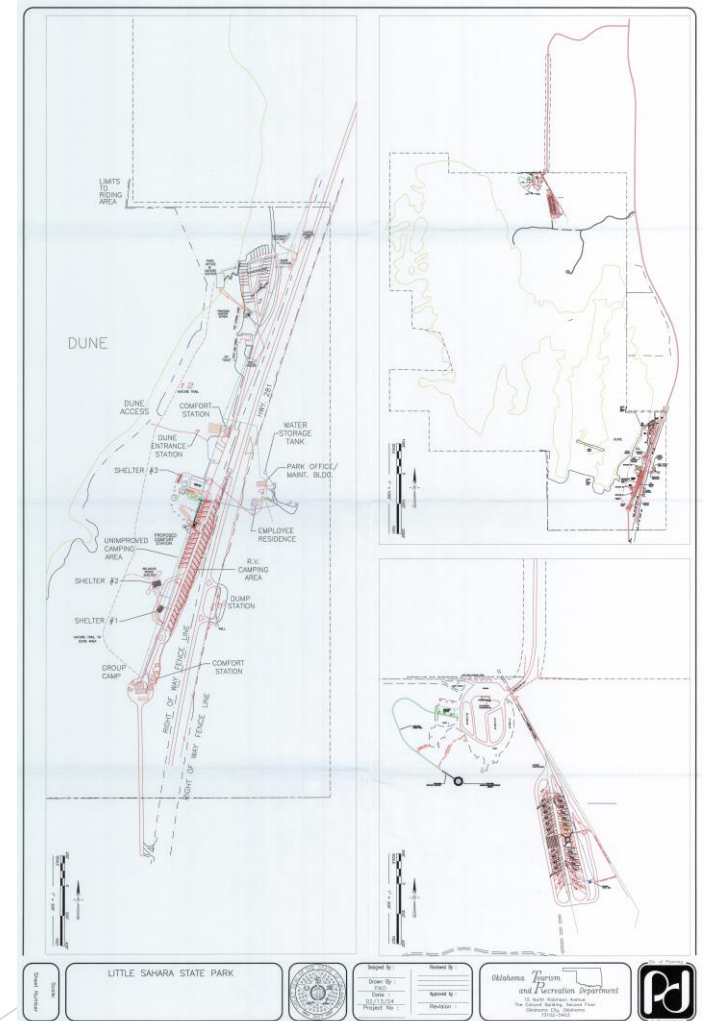
Project History

- ▶ Two primary objectives
 - ▶ RMP
 - ▶ Plan preparation and publication (see below)
 - ▶ Master file (CAD)
 - ▶ GIS*
 - ▶ GPS data collection
 - ▶ GIS database management
 - ▶ Web GIS administration
 - ▶ Physical server
 - ▶ Web viewer

**Today's focus*

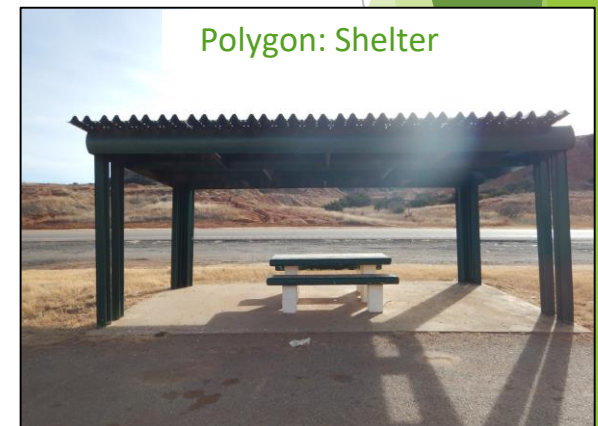


geog.okstate.edu/resources/rmpgis



GPS Data Collection

- ▶ Global Positioning System (GPS)
 - ▶ Fieldwork
 - ▶ Data Inventory



GIS Database Management

► Geographic Information Systems (GIS)

- Data management

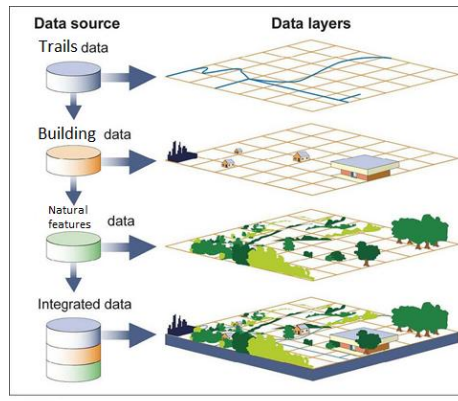
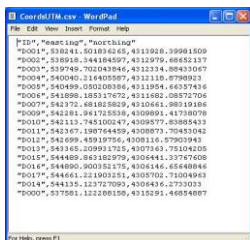
- Map creation

- Clients

- Desktop

- Web-based including mobile devices

GPS data



Source: GAO.



GIS Database Management

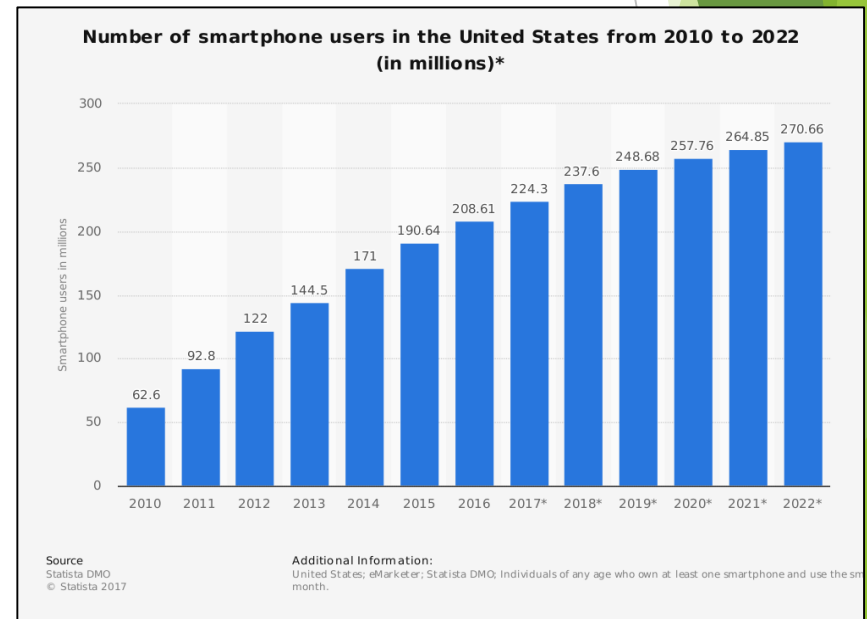
► Geographic Information Systems (GIS)

- Data management
- Map creation
- Clients
 - Desktop
 - **Web-based including mobile devices**



http://www.esri.se/Produkter/ArcGIS/mojligheter/Ej/Ej_enterprise-it

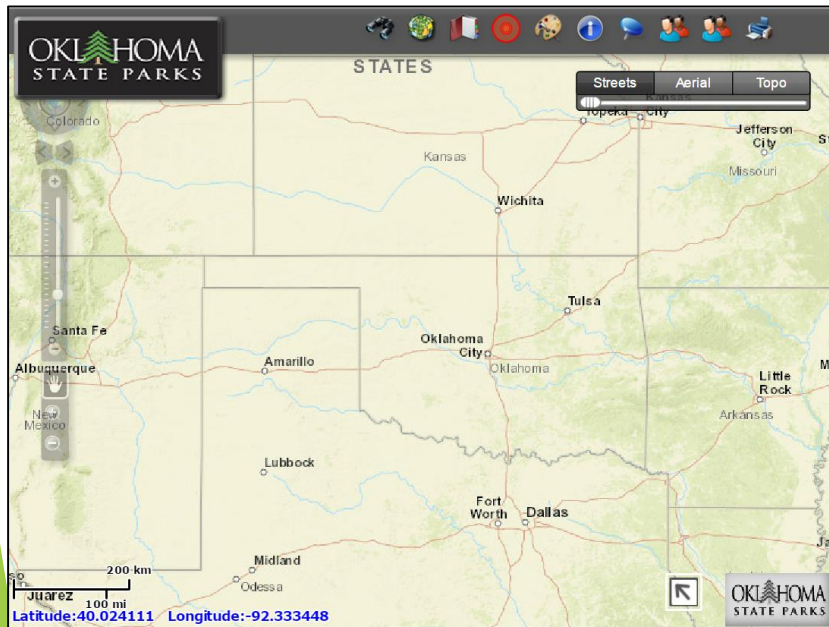
The explosive growth of the mobile devices



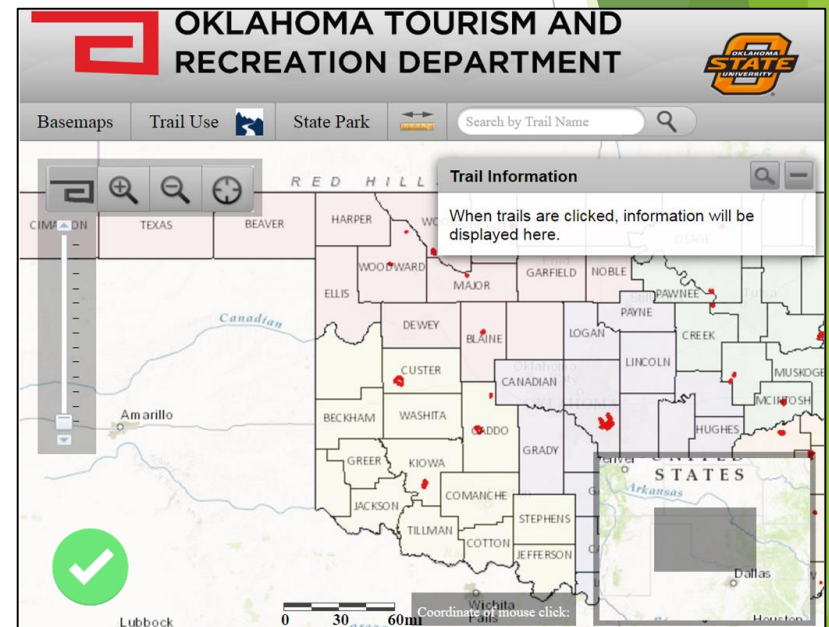
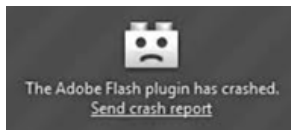
<https://www.statista.com/statistics/201182/forecast-of-smartphone-users-in-the-us/>

Web GIS Administration

► Web GIS viewers (old vs. new)



- Only Windows System
- Retired (June 1, 2016)



- Mobile and Desktops
- Web Resources
- 94.5 % of all websites



Web GIS Administration

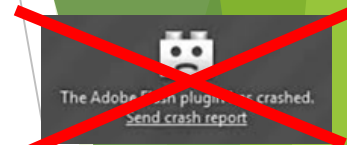
- Pros with new viewer
 - Compatible with social media



Oklahoma
Tourism
@TravelOK

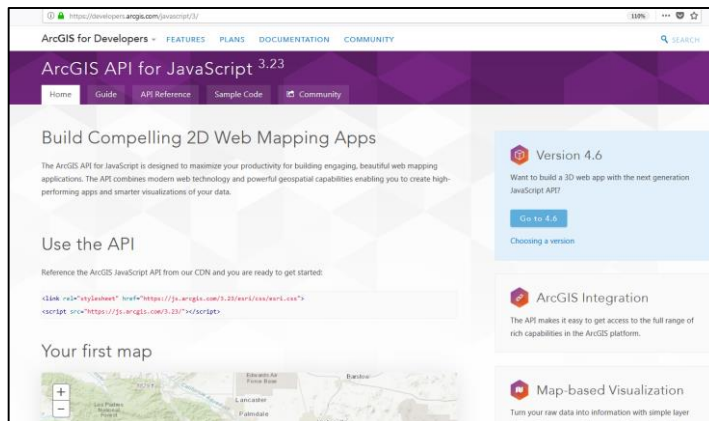


Oklahoma State
Parks
@oklahomastateparks



Web GIS Administration

- ▶ Pros with new viewer
 - ▶ Desktop AND mobile-friendly!
 - ▶ Additional resources



<https://developers.arcgis.com/javascript/3/>



Demo

