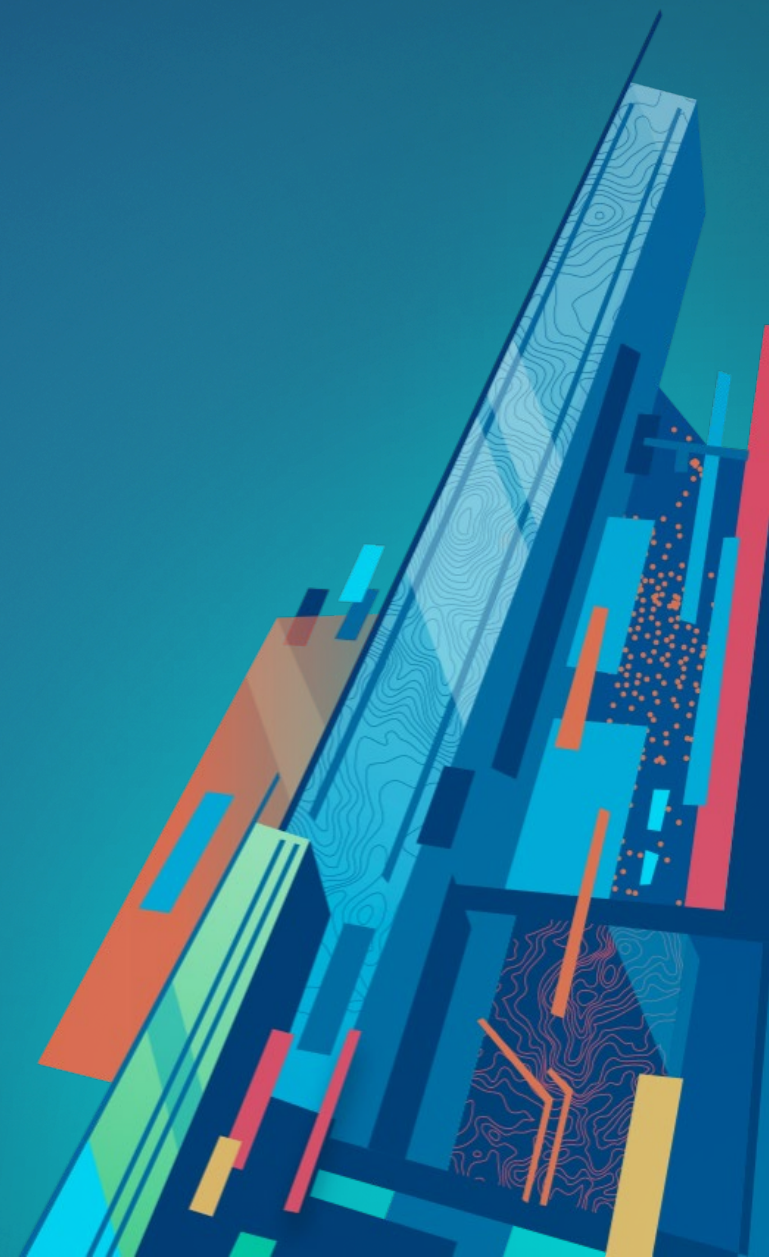




Public Safety Solutions

Jeremiah Lindemann



SOCIAL CONFLICTS

HOMELESSNESS



ECONOMIC PRESSURES

TRANSPARENCY



DISASTERS

ACTIVE SHOOTERS

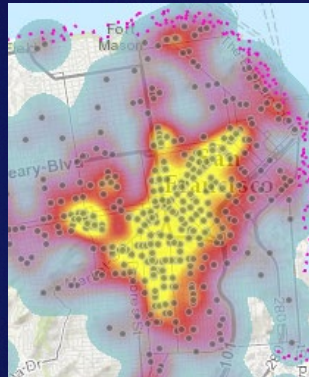
TACTICS & TRAINING



CHALLENGING AND EVOLVING TIMES

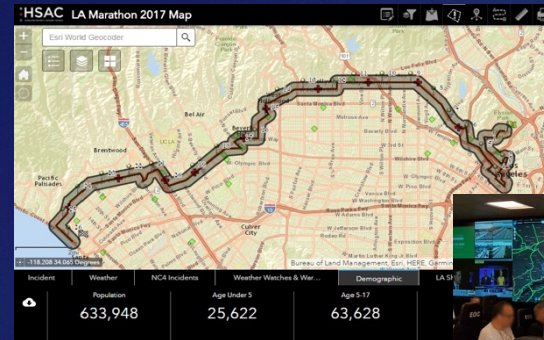
Public Safety

Bicycle Collisions



San Francisco
Nic Jay Mapping

Marathon Tracking



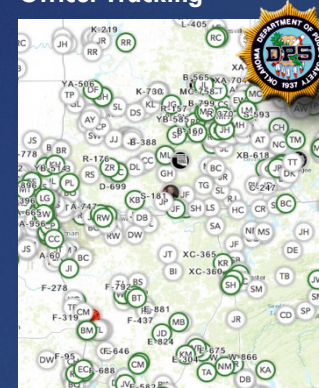
Los Angeles
HSAC

Event
Management



Philadelphia

Real-Time
Officer Tracking



Oklahoma
Department of Public Safety

Crime Prediction
(Machine Learning)

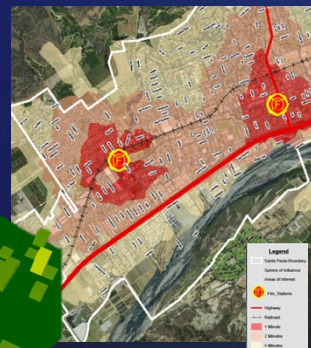


London
Dataiku



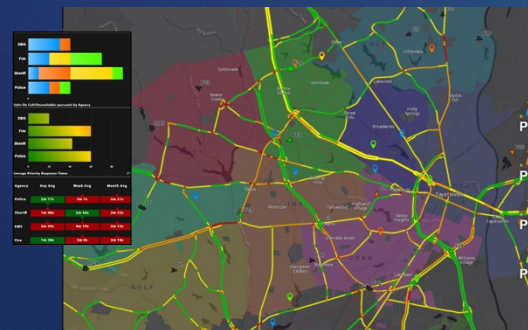
Brazil
Rio de Janeiro

Fire Response Times



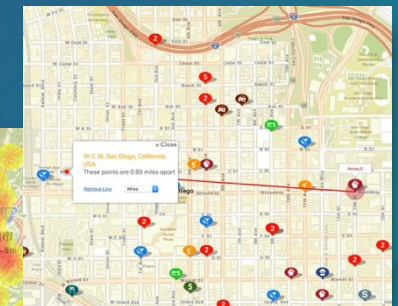
California
Santa Paula

911 Dispatch System



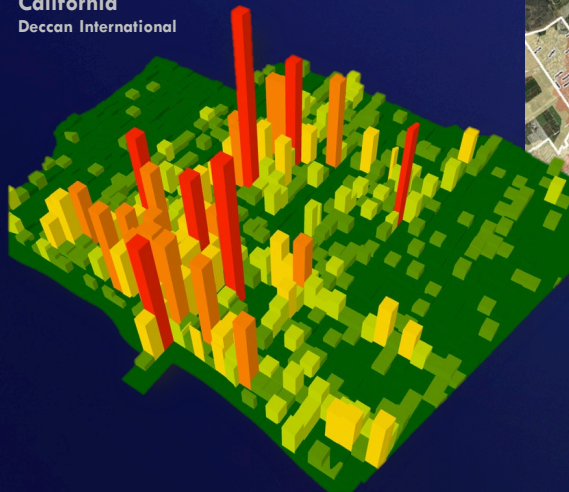
North Carolina
BCS, Inc.

Online Crime Mapping

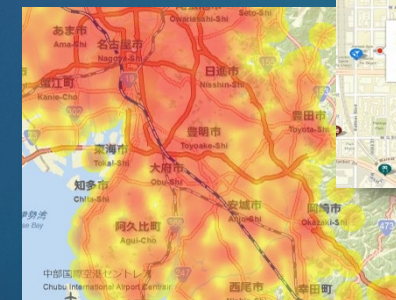


San Diego
crimemapping.com

Fire Incidents
California
Deccan International



Crime and
Traffic Accidents



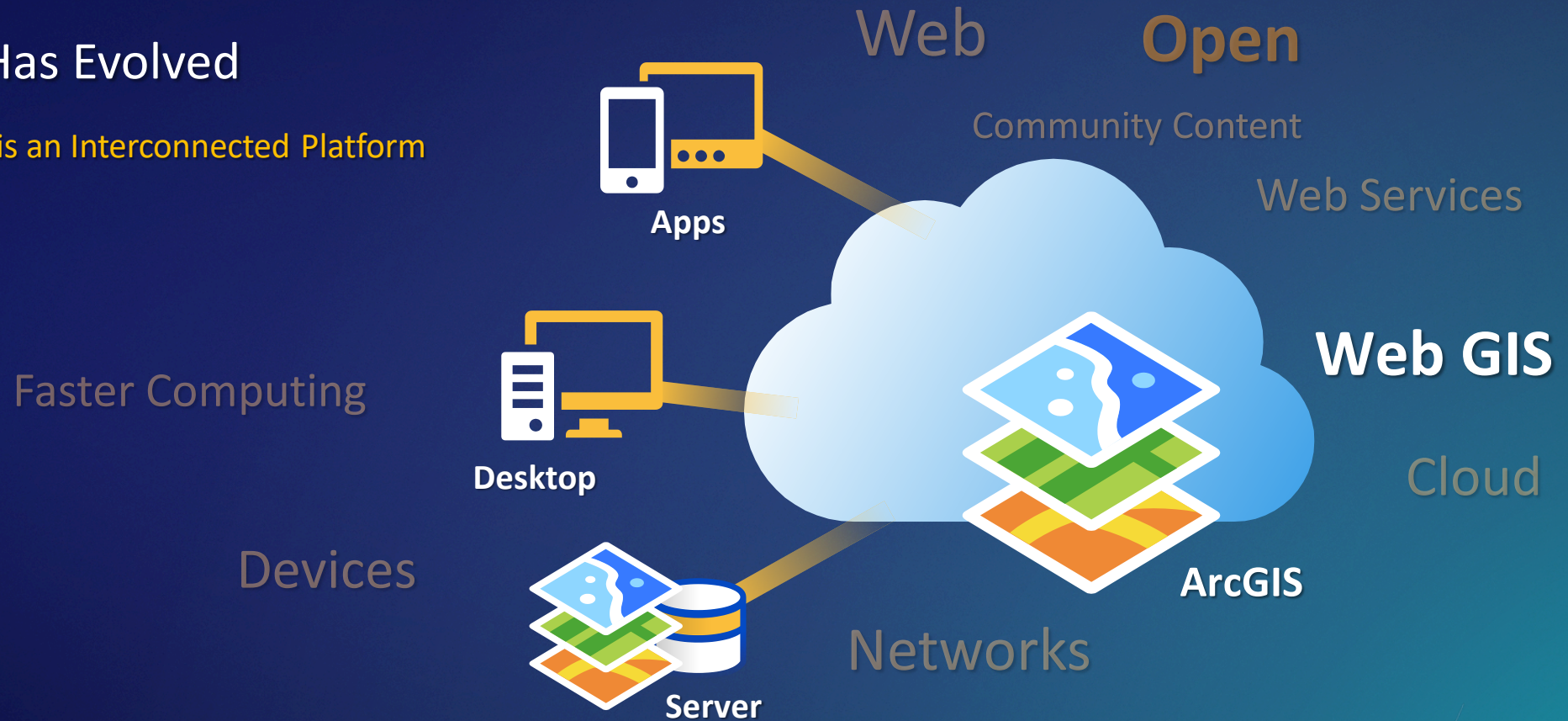
Japan
Aichi Prefecture

Challenges

- Remaining in a “constant state of preparedness”
- How to apply limited resources effectively
- Getting appropriate information to field staff
- Monitoring activity during dynamic conditions and providing real time operational briefs
- Understanding trends and informing command staff effectively
- Communicating effectively with the public

GIS Has Evolved

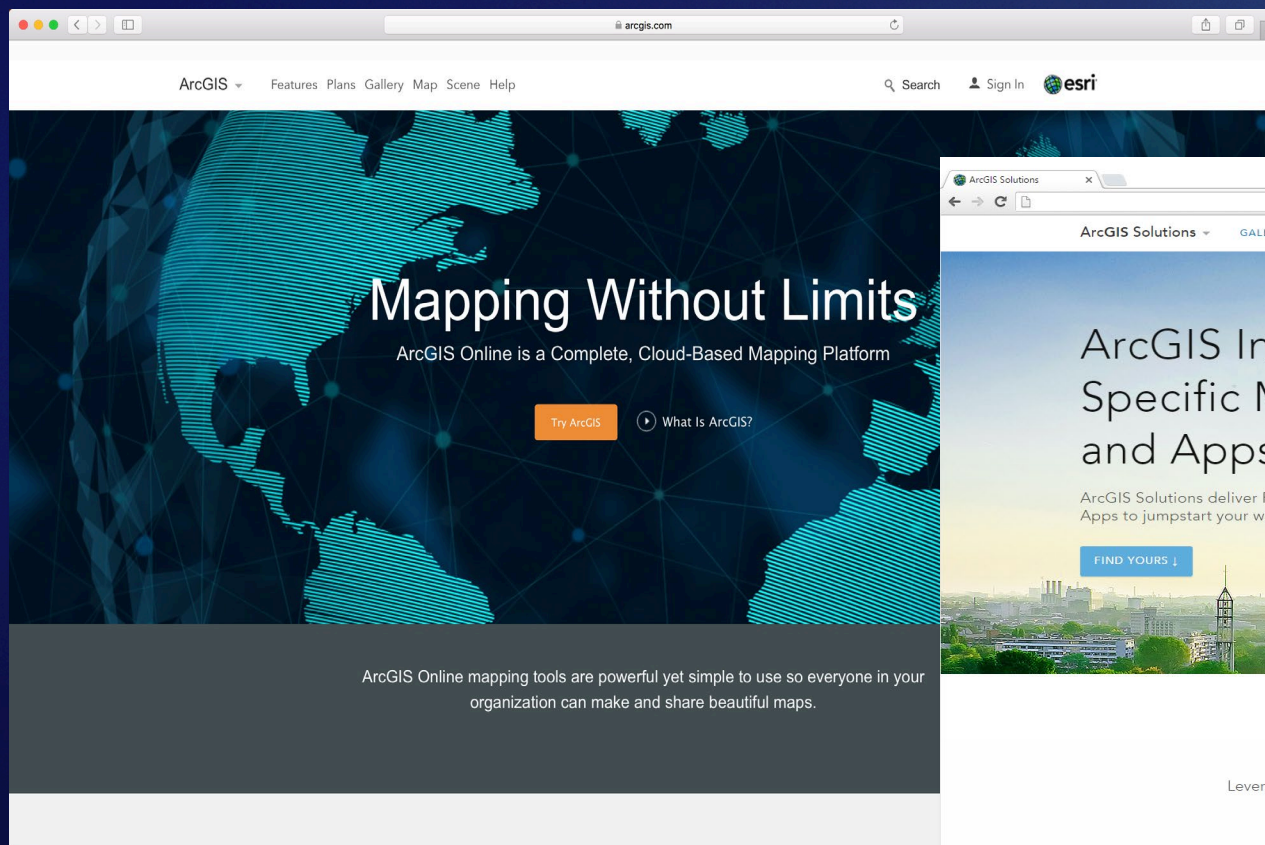
Your GIS is an Interconnected Platform



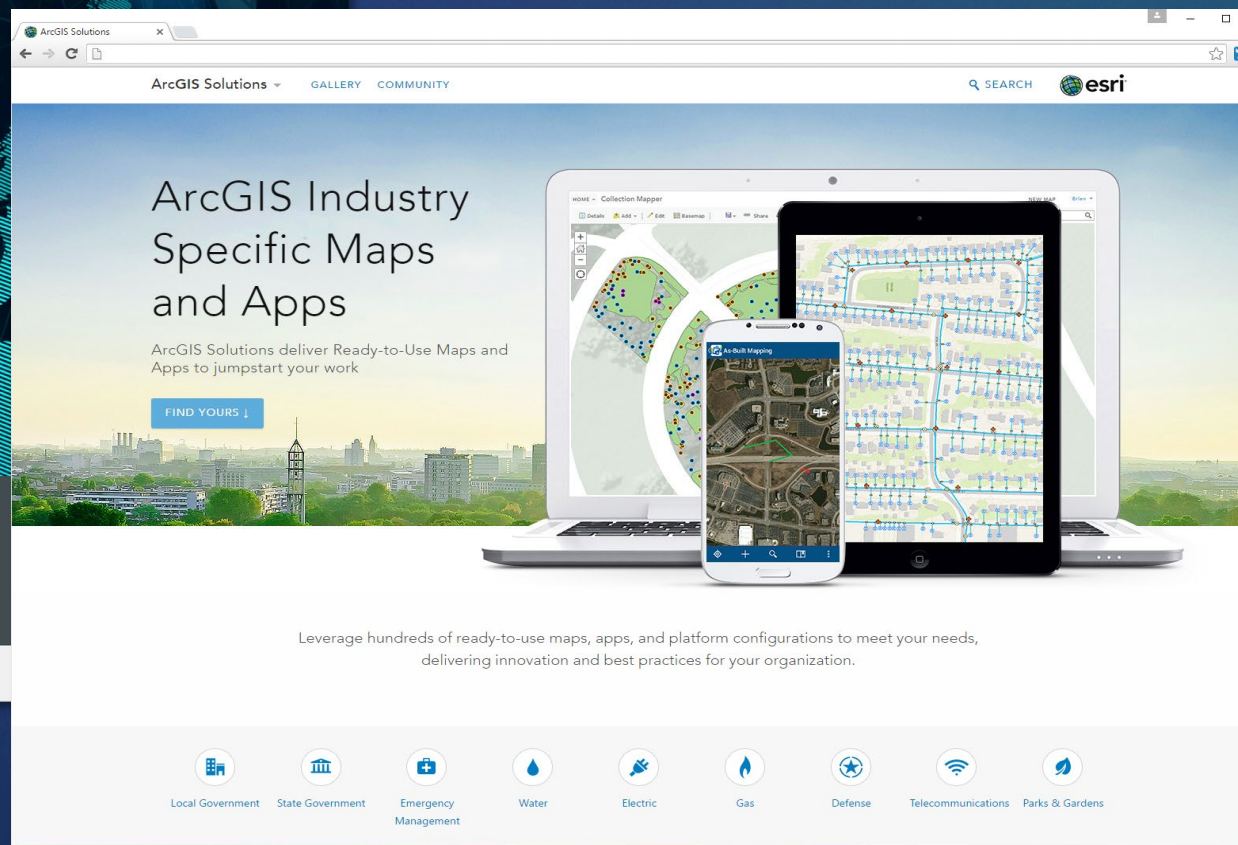
Bringing Together Data, Technology, and People . . .

. . . Creating a Framework for Solving Complex Problems

Turning Point



ArcGIS Online



ArcGIS Solutions

ArcGIS Solution Templates | Public Safety

- Collection of useful maps and apps

Configurable and extensible

Freely available and fully supported

- Community of users

Best Practices / Implementation Support

- Network of Esri Services and Partner offerings

Help users implement, sustain and enhance

Editing
Workflows



Focused
Maps and Apps



Analytical
Models



Information Model

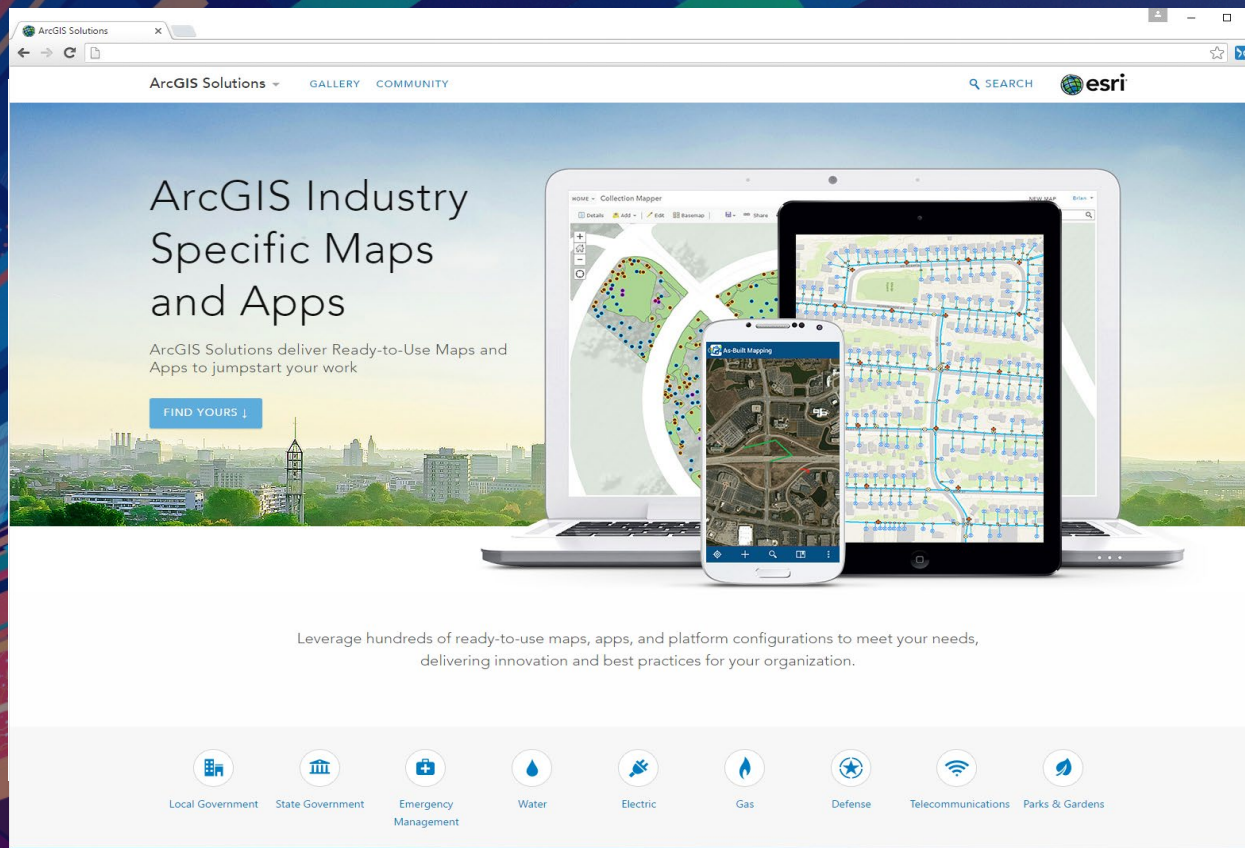
...Improving government operations and enhancing services provided to the public

Mission

- Deliver maps and applications quickly throughout their organization
 - Roadmap for standard capabilities, improve service delivery, expand reach, innovation....
- Stay current with future releases / avoid legacy technology
 - Save time and money, leverage new ArcGIS offerings, focus on complex or unique problems....
- Unlock geospatial platform so it can be leveraged by many
 - Mitigate many organizational challenges, maximize technical expertise....
- Leverage the collective knowledge of the entire community
 - Best practices, industry tradecraft....

Public Safety Agencies

Emergency Management			Fire Service	Law Enforcement	Resilience
Organize Foundational Data	Maintain Situational Awareness	Conduct Damage Assessments	Improve Fire Operations	Organize Foundational Data	Become More Resilient
Prepare for Incidents	Assess Incident Impact	Collect Health & Safety Reports	Develop Pre-Incident Plans	Perform Crime Analysis	Community Resilience
Engage the Public	Inform the Public	Manage Storm Damage	Increase Fire Prevention	Develop Tactical Plans	Community Resilience Surveys
Assess Vulnerabilities	Produce Emergency Maps	Collect Health & Safety Reports	Respond to Emergencies	Inform the Public	Community Impact
Emergency Management	Incident Status Dashboard	Citizen Reports	AED Locator	Near Repeat Analysis	Resilience Dashboard
Prepare for Incidents	Incident Briefing	Public Safety Reports	AED Inventory	Develop Tactical Plans	Community Impact Dashboard
Flood Planning	Road Closures	Health & Safety Reports	Develop Pre-Incident Plans	Tactical Operation Planner	
Engage the Public	Assess Incident Impact	Health & Safety Dashboard	Target Hazard Analysis	Tactical Operation Dashboard	
Special Needs Registry	CAMEO Tools	Manage Storm Debris	Pre-Incident Plan Coordinator	Tactical Operation Surveillance	
My Hazard Information	Inform the Public	Debris Reporting	Pre-Incident Plan Field Inventory	Inform the Public	
Assess Vulnerabilities	Impact Summary Map		Pre-Incident Plan Dashboard	Public Crime Map	
Hazard Assessment & Analysis	Shelter Locator		Pre-Incident Plan Locator	Neighborhood Crime Reports	
Hazard Vulnerability Assessment	Evacuation Zones		Increase Fire Prevention		
Community Mitigation	Public Information		Fire Safety Survey		
Mitigation Feedback	Produce Emergency Maps		Respond to Emergencies		
	Emergency Management Maps		Emergency Assistance		
			Warming/Cooling Center Locator		
			Warming/Cooling Center Reporter		

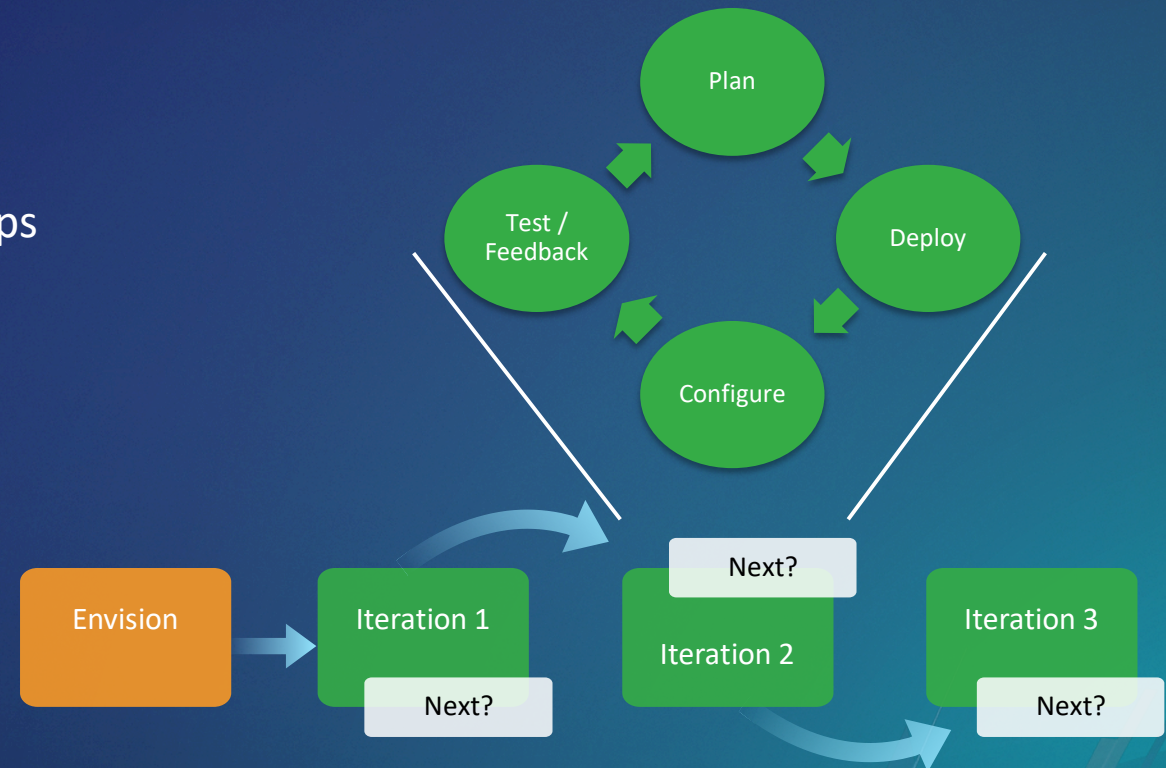


Show Me!

How do I get started?

Leverage solution offerings to maximize technical expertise and minimize deployment time

- Deploy quick wins
 - Configure your mapping platform
 - Align with strategic business needs
 - Implement one or more focused maps and apps
 - Organize your data
 - Iterate....



...embrace an agile implementation approach

What's New

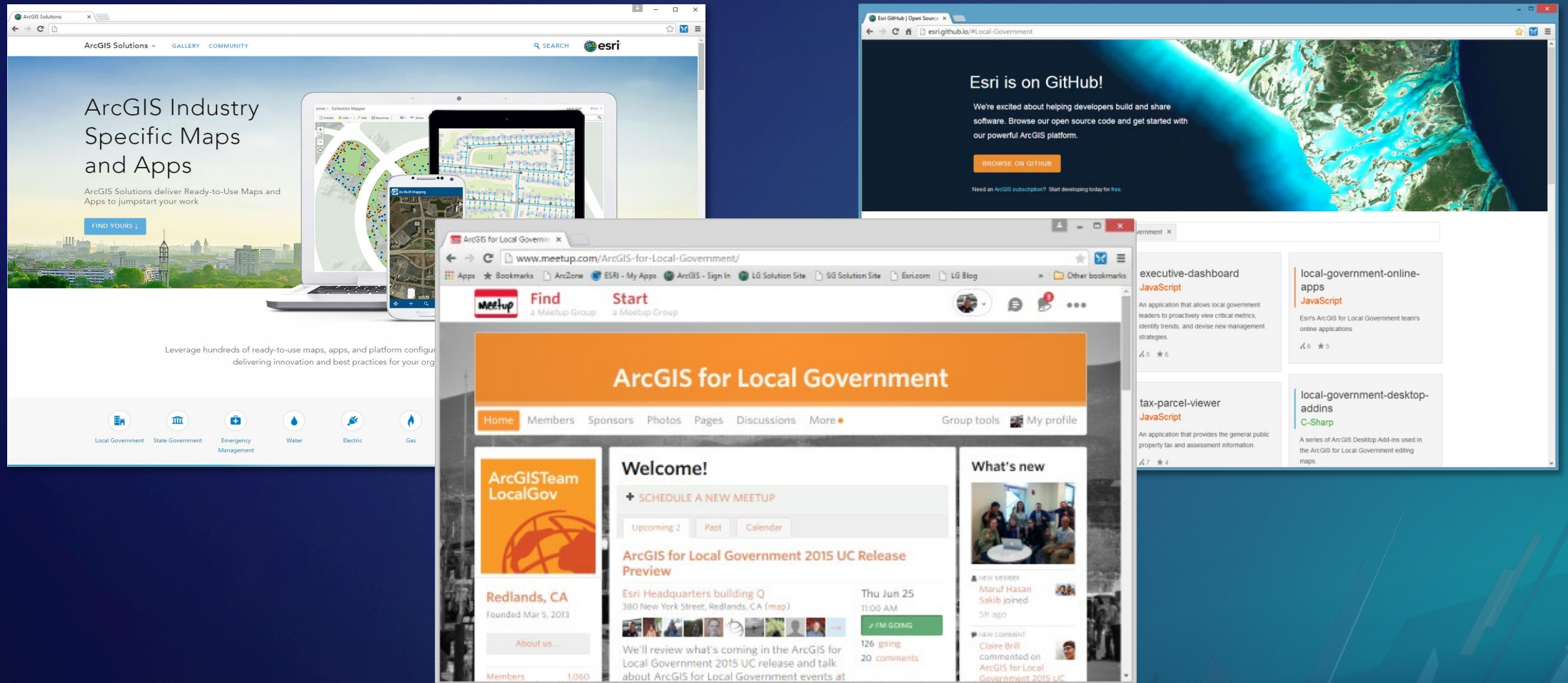
- Crime Analysis
- Emergency Management Operations
- Daily Activity Dashboard / Fire Incident Dashboard
- Homelessness
- Performance Management

Road Ahead

- Simply, simplify, simplify
- Special Event Planning and Operations
- Crime Analysis Enhancements (Cell Phone Analysis & Near-Repeat Analysis)
- Public engagement
- 3D

The Community

It's not just about the technology



Closing

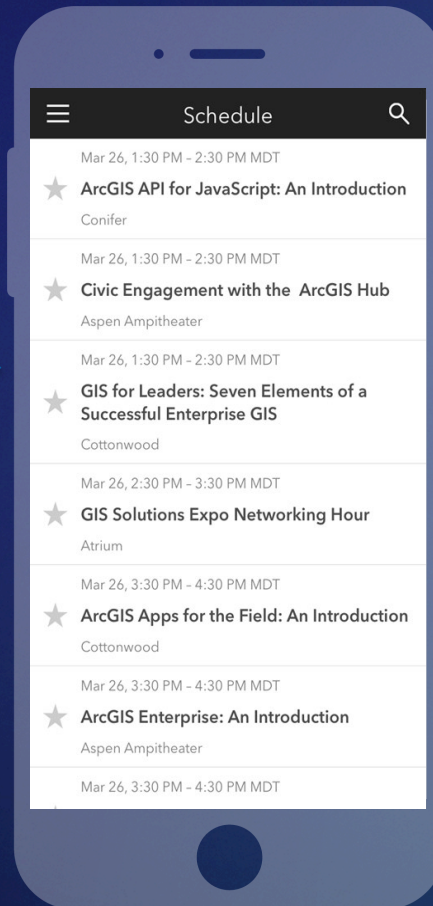
- Deliver solutions that enable your success
 - Easier to deploy and sustain
- Evolve and grow the collection of apps
- Develop a community of users
- Provide a platform for partners to deploy their solutions

Please Take Our Survey on the App

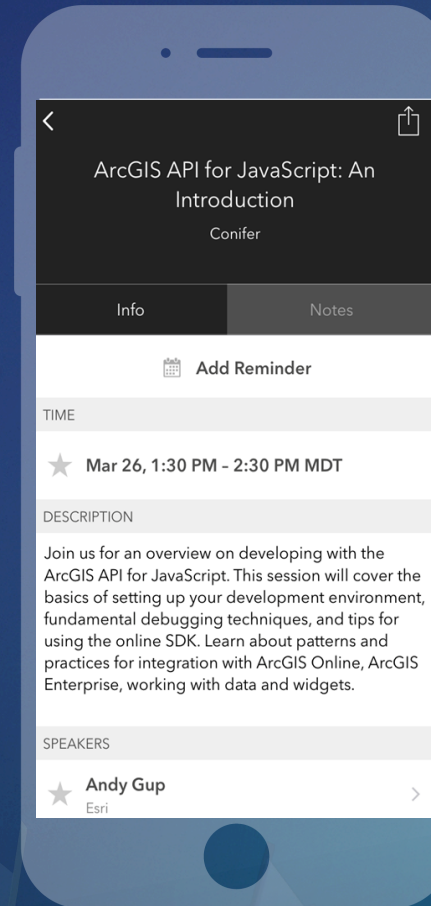
Download the Esri Events app
and find your event



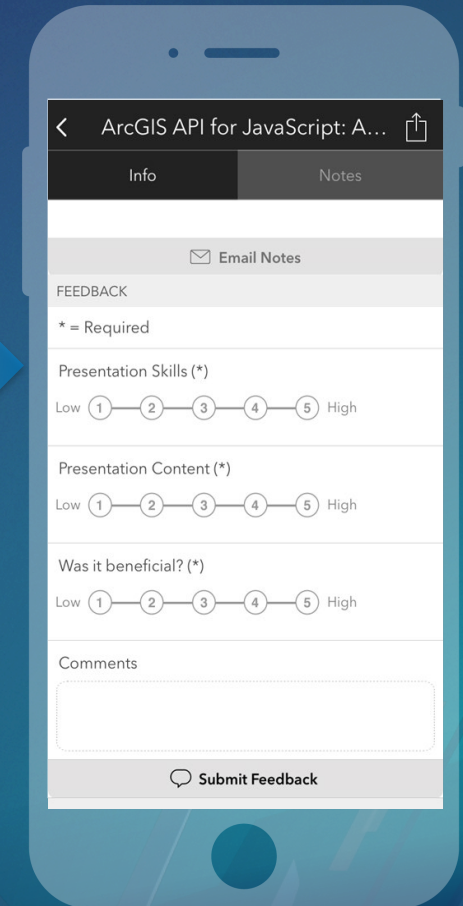
Select the session
you attended



Scroll down to find the
feedback section



Complete answers
and select "Submit"



Thank you

Be innovative, aware, and know you are not alone

Jeremiah Lindemann, Product Engineer
State and Local Government Solutions

 <http://solutions.arcgis.com/>

 <http://meetup.com/ArcGIS-for-Local-Government/>
<http://meetup.com/ArcGIS-for-State-Government/>

 @ArcGISLocalGov
@ArcGISStateGov

 <http://esri.github.com>



esri

THE
SCIENCE
OF
WHERE